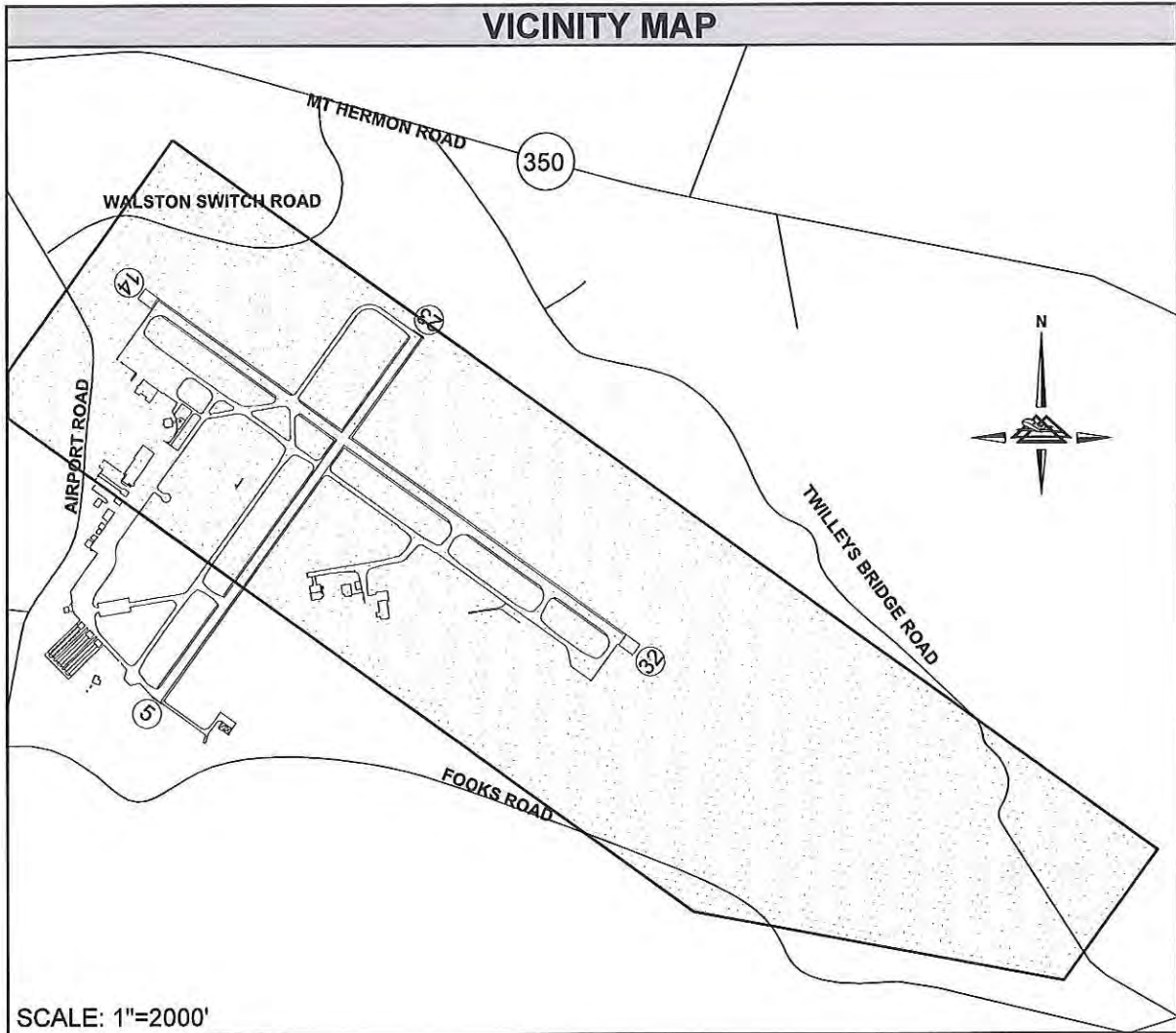


EXHIBIT 2

SALISBURY-OCEAN CITY: WICOMICO REGIONAL AIRPORT

IMPACT AREA EXHIBITS



C:\Users\chw\ACCDocs\DAC\20078\Project Files\Exhibits\20078-SBY-wetlands-impacts-exh - wssi permit 2021-09-23.dwg, Cover, 12/1/2021 8:35:07 AM, chw

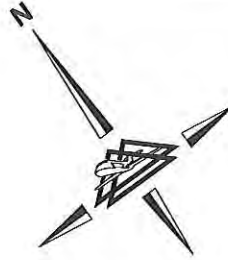
DRAWING: 20078-SBY-wetlands-impacts-exh - wssi permit 2021-09-23.dwg LAYOUT: Cover



COVER SHEET
SALISBURY-OCEAN CITY WICOMICO REGIONAL AIRPORT

DRAWN BY:	CHW	CHECKED BY:	MAP	SCALE:	NONE	DATE:	DECEMBER 2021
-----------	-----	-------------	-----	--------	------	-------	---------------

SHEET
1 OF 19



LEGEND

- EXISTING AIRPORT PROPERTY LINE
- WATERSHED BOUNDARY LINE
- LIMITS OF DISTURBANCE
- HAUL ROUTE (TWO-WAY TRAFFIC)
- EXISTING NONTIDAL WETLANDS
- PERMANENT EMERGENT WETLAND IMPACT - MDE REGULATED ONLY
- PERMANENT EMERGENT WETLAND IMPACT
- PERMANENT FORESTED WETLAND IMPACT - MDE REGULATED ONLY
- PERMANENT FORESTED WETLAND IMPACT
- FORESTED WETLANDS CONVERSION - MDE REGULATED ONLY
- PERMANENT 25-FOOT BUFFER IMPACT
- 25-FOOT BUFFER CONVERSION
- 100-FOOT EXPANDED DISTURBANCE BUFFER
- FEMA FLOOD HAZARD BOUNDARY
- PROPOSED GRADING

SUMMARY OF IMPACTS

IMPACT TYPE	MDE REGULATED	USACE AND MDE REGULATED	TOTAL
PERMANENT EMERGENT WETLAND IMPACT	5,518 SQFT	52,354 SQFT	57,872 SQFT
PERMANENT FORESTED WETLAND IMPACT	1,228 SQFT	260,349 SQFT	261,577 SQFT
FORESTED WETLANDS CONVERSION	958,494 SQFT	-	958,494 SQFT
PERMANENT 25-FOOT BUFFER IMPACT	365,192 SQFT	-	365,192 SQFT
25-FOOT BUFFER CONVERSION	199,102 SQFT	-	199,102 SQFT
100-FOOT EXPANDED DISTURBANCE BUFFER	332,497 SQFT	-	332,497 SQFT
100-YEAR FLOODPLAIN IMPACT	0 SQFT	-	0 SQFT
STREAM IMPACT	0 SQFT	0 SQFT	0 SQFT

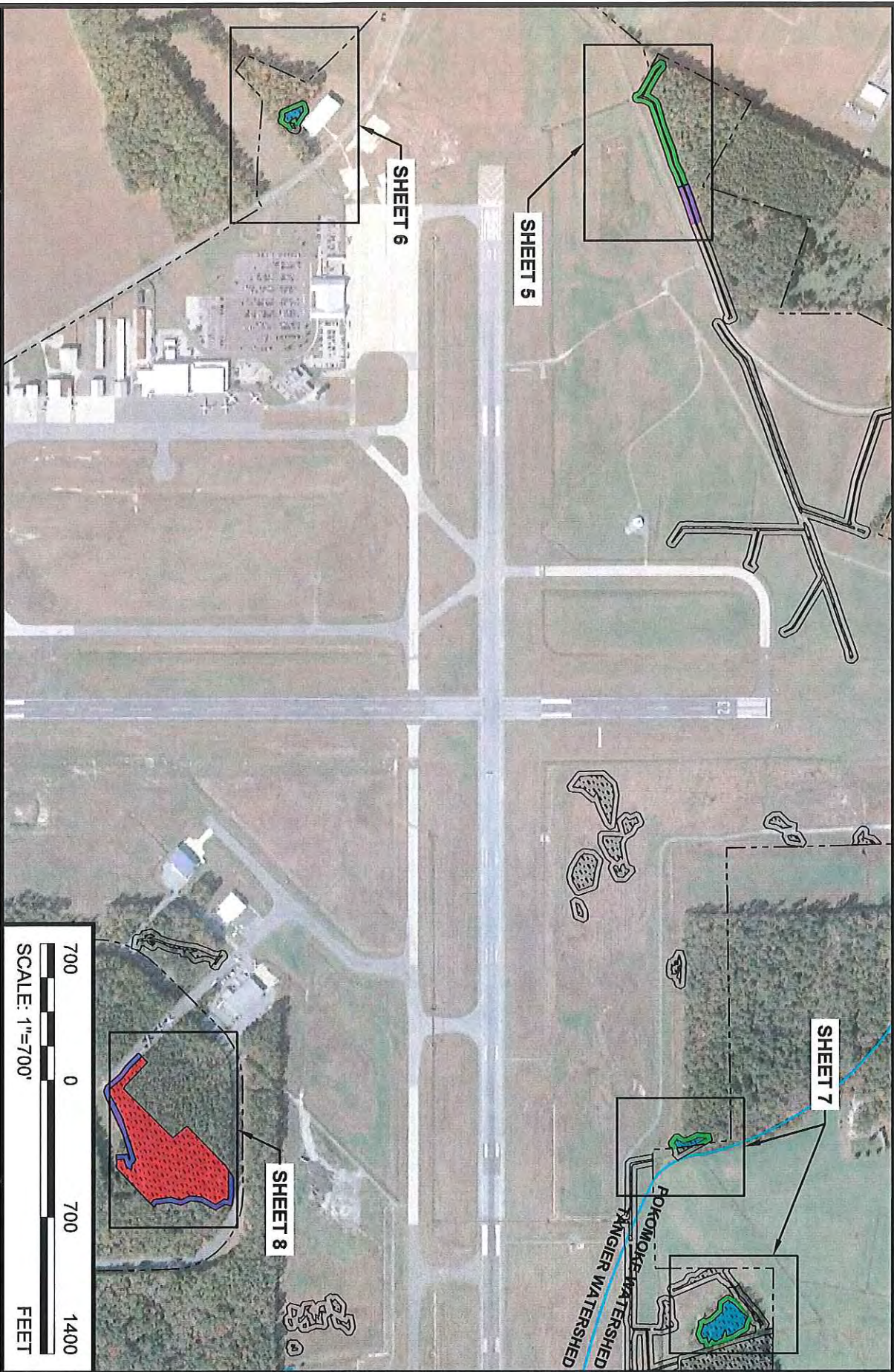


www.deltairport.com

LEGEND AND NORTH ARROW SALISBURY-OCEAN CITY WICOMICO REGIONAL AIRPORT

DRAWN BY: CHW CHECKED BY: MAP SCALE: NONE DATE: DECEMBER 2021

SHEET
2 OF 19



www.delawarepermits.com

DRAWN BY:

CHW

CHECKED BY:

MAP

SCALE:

1" = 700'

DATE:

DECEMBER 2021

OVERALL IMPACT MAP - SHEET 1 OF 2
SALISBURY-OCEAN CITY WICOMICO REGIONAL AIRPORT

SHEET
3 OF 19