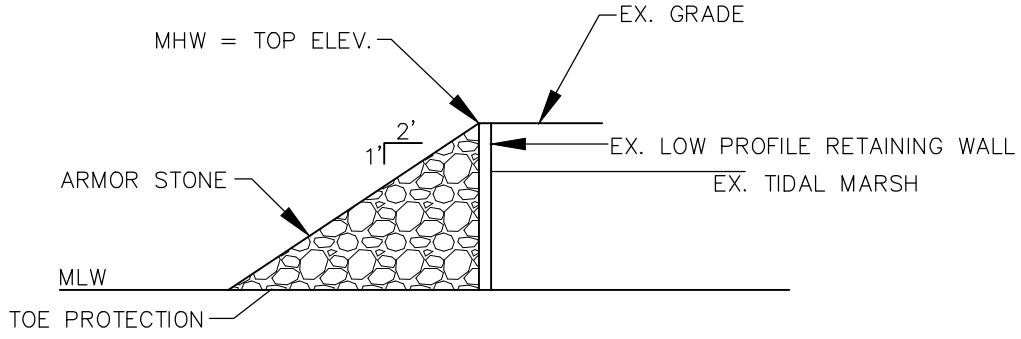


PROPOSED ELEVATED PIER SECTION

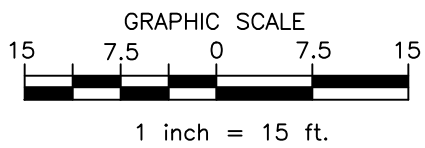
SCALE: 1" = 15'



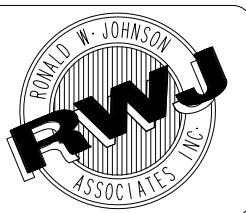
NOTE: ARMOR STONE TO FACE OF EX. LOW PROFILE RETAINING WALL FROM TOP OF LOW PROFILE RETAINING WALL TO SUBSTRATE.

TYPICAL REVETMENT SECTION

NTS

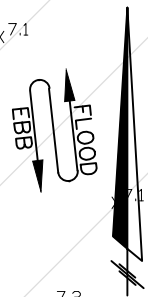
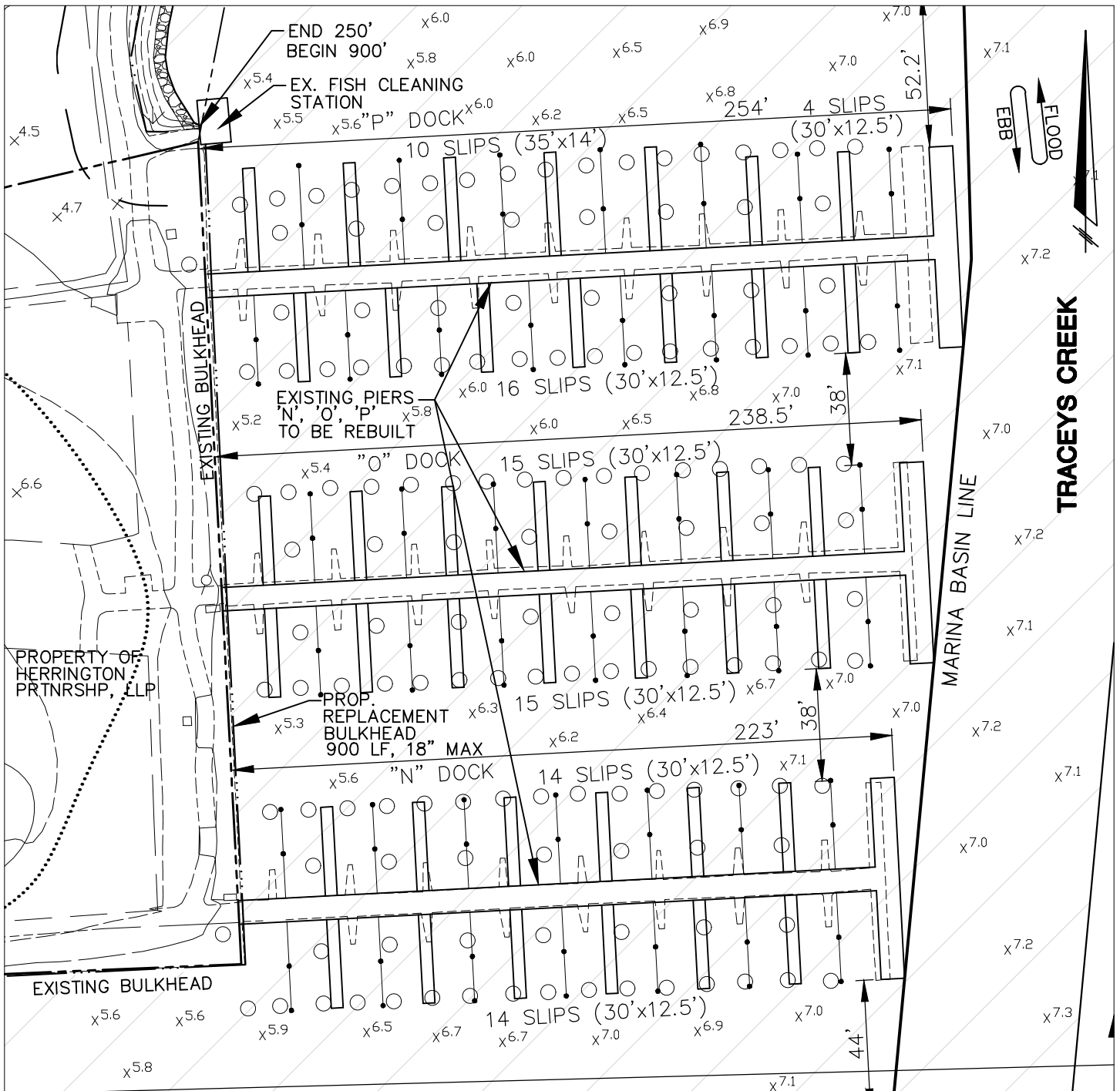


MARYLAND DEPARTMENT OF THE ENVIRONMENT &
BALTIMORE DISTRICT CORPS. OF ENGINEERS
LICENSE & PERMIT EXHIBIT
HERRINGTON HARBOUR NORTH
TAX MAP 77; BLOCKS 11 & 12; PARCEL 89
8TH TAX DISTRICT
SCALE: 1" = 15'
PAGE 9 OF 26
A.A. CO., MD
AUGUST, 2019

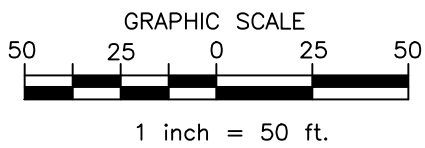


Ronald W. Johnson Associates, Inc.
Consulting Engineers, Land Planners, Surveyors

2661 Riva Road Building 400, Suite 420 Annapolis, MD 21401
410.841.5221 410.266.6612 Fax 410.841.5124

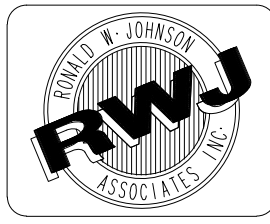


PROPERTY OF
HERRINGTON
PARTNERSHIP, LLP



MARYLAND DEPARTMENT OF THE ENVIRONMENT &
BALTIMORE DISTRICT CORPS. OF ENGINEERS
LICENSE & PERMIT EXHIBIT
HERRINGTON HARBOUR NORTH
TAX MAP 77; BLOCKS 11 & 12; PARCEL 89
8TH TAX DISTRICT
SCALE: 1" = 50'

PAGE 10 OF 26
A.A. CO., MD
AUGUST, 2019



Ronald W. Johnson Associates, Inc.
Consulting Engineers, Land Planners, Surveyors
2661 Riva Road Building 400, Suite 420 Annapolis, MD 21401
410.841.5221 410.266.6612 Fax 410.841.5124