



Tred Avon Oyster Restoration

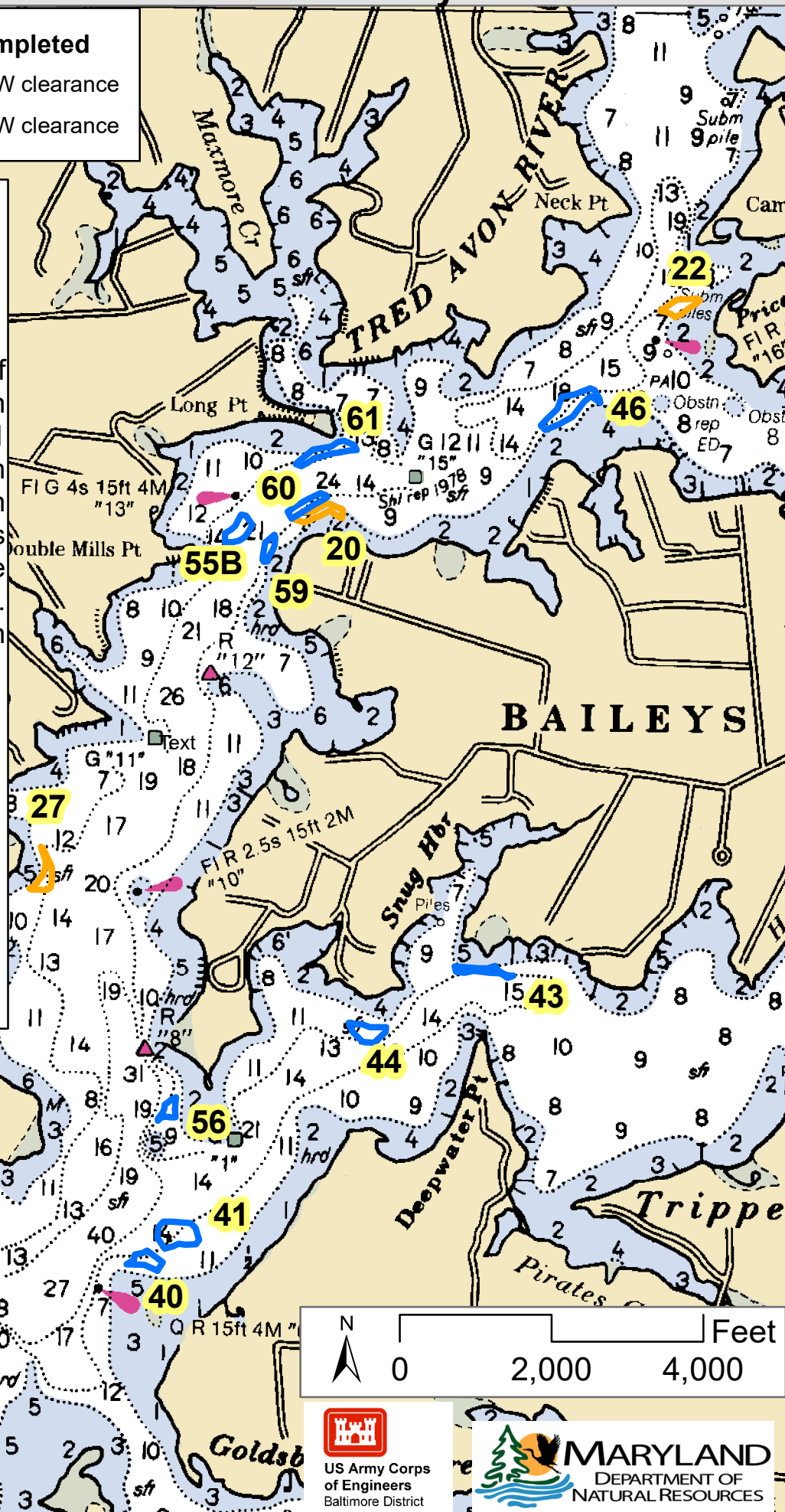
Notice: water depths are shallower than currently shown on charts

Tred Avon River Construction Completed

-  Oyster reefs with at least 6 ft MLLW clearance
-  Oyster reefs with at least 8 ft MLLW clearance



The U.S. Army Corps of Engineers and Maryland Department of Natural Resources have placed rock and shell in the areas identified on this map to restore oyster reef habitat in the Tred Avon River. In those areas, water depths are 1 foot to up to 2 feet shallower than what is currently shown on navigational charts. NOAA is revising the charts to reflect these restoration areas and depths. Please be vigilant when navigating through these areas.

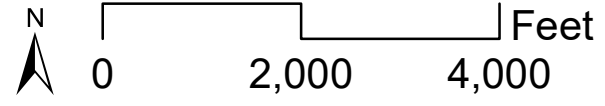
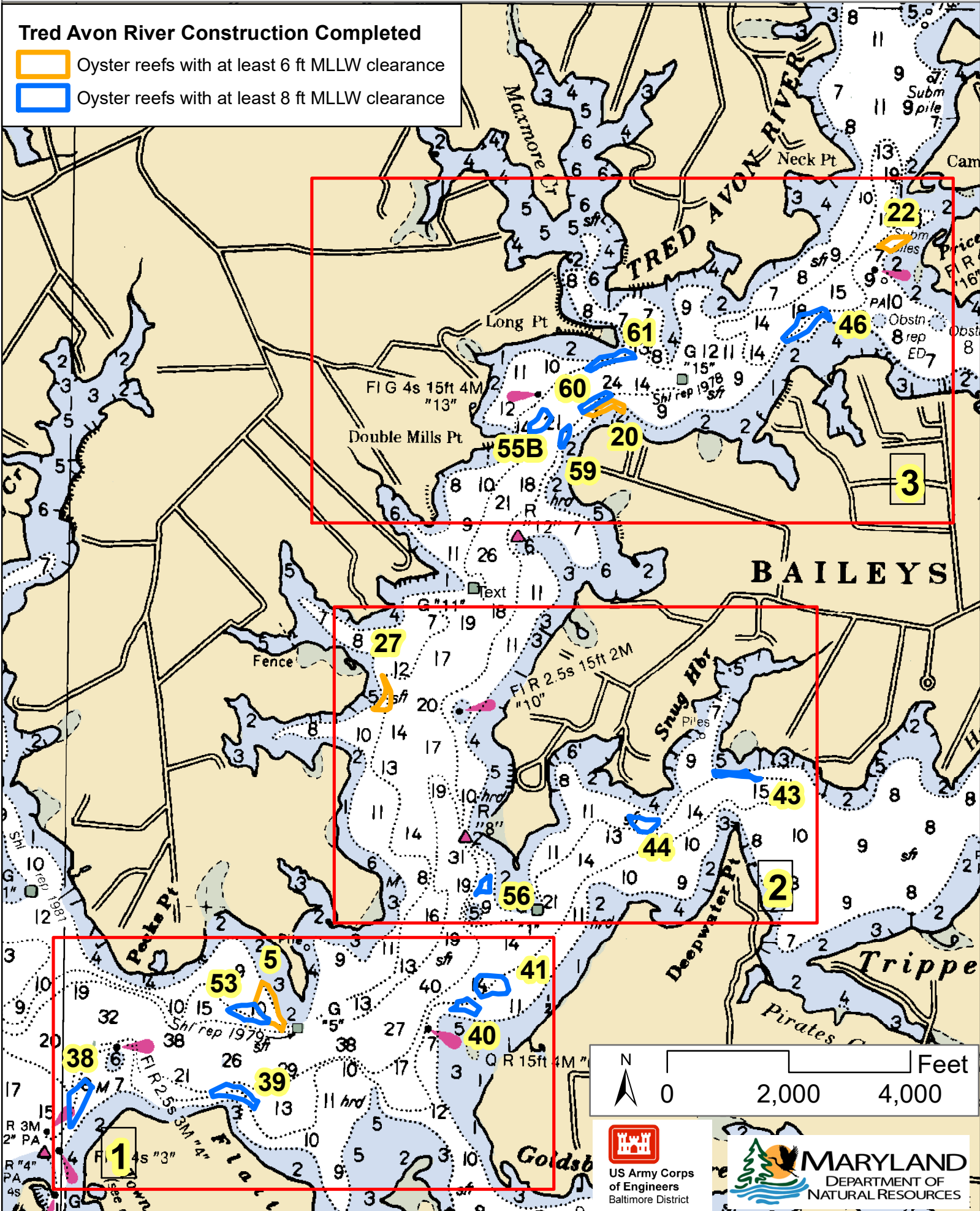
This map, finer scale maps, and coordinates of the restoration areas are available at <http://go.usa.gov/cswPh>. Contact the USACE Study Manager, Angie Sowers - 410-962-7440 or angela.sowers@usace.army.mil for further information.



Tred Avon Oyster Restoration



Tred Avon River Construction Completed

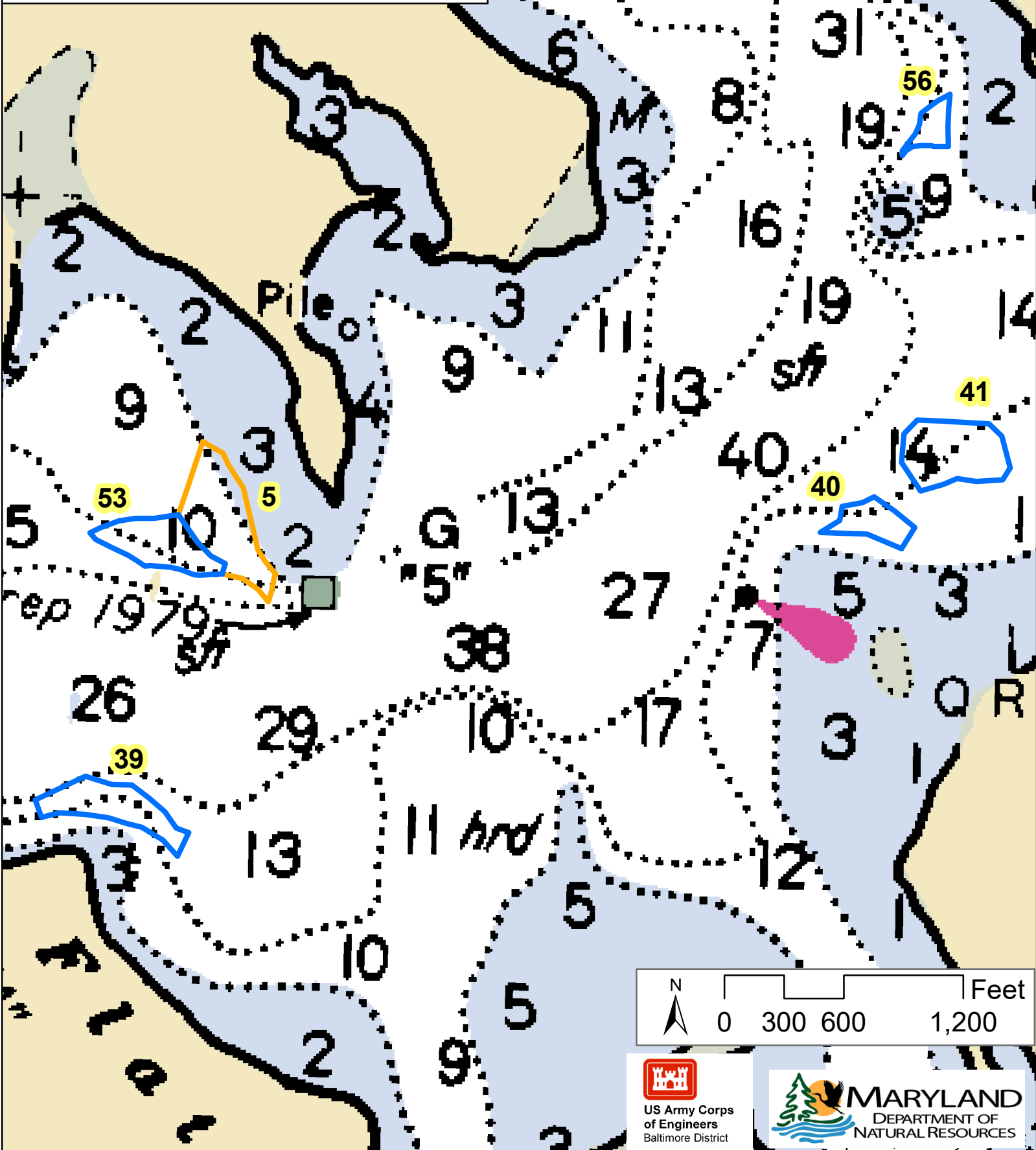
-  Oyster reefs with at least 6 ft MLLW clearance
-  Oyster reefs with at least 8 ft MLLW clearance



Tred Avon Oyster Restoration Lower Tributary (Box 1)



Tred Avon River Construction Completed

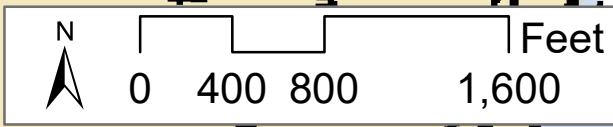
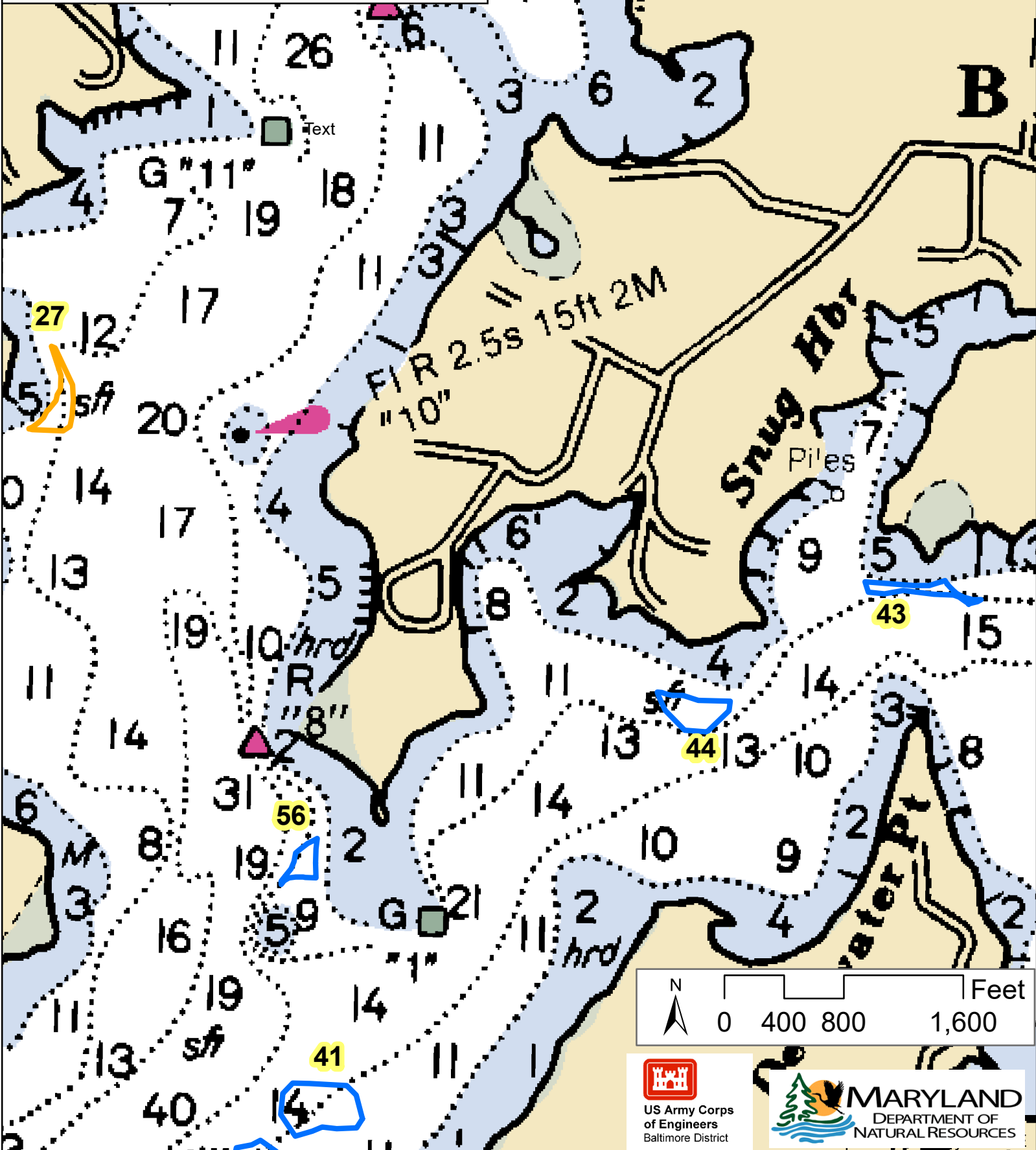
-  Oyster reefs with at least 6 ft MLLW clearance
-  Oyster reefs with at least 8 ft MLLW clearance



Tred Avon Oyster Restoration Middle Tributary (Box 2)



Tred Avon River Construction Completed

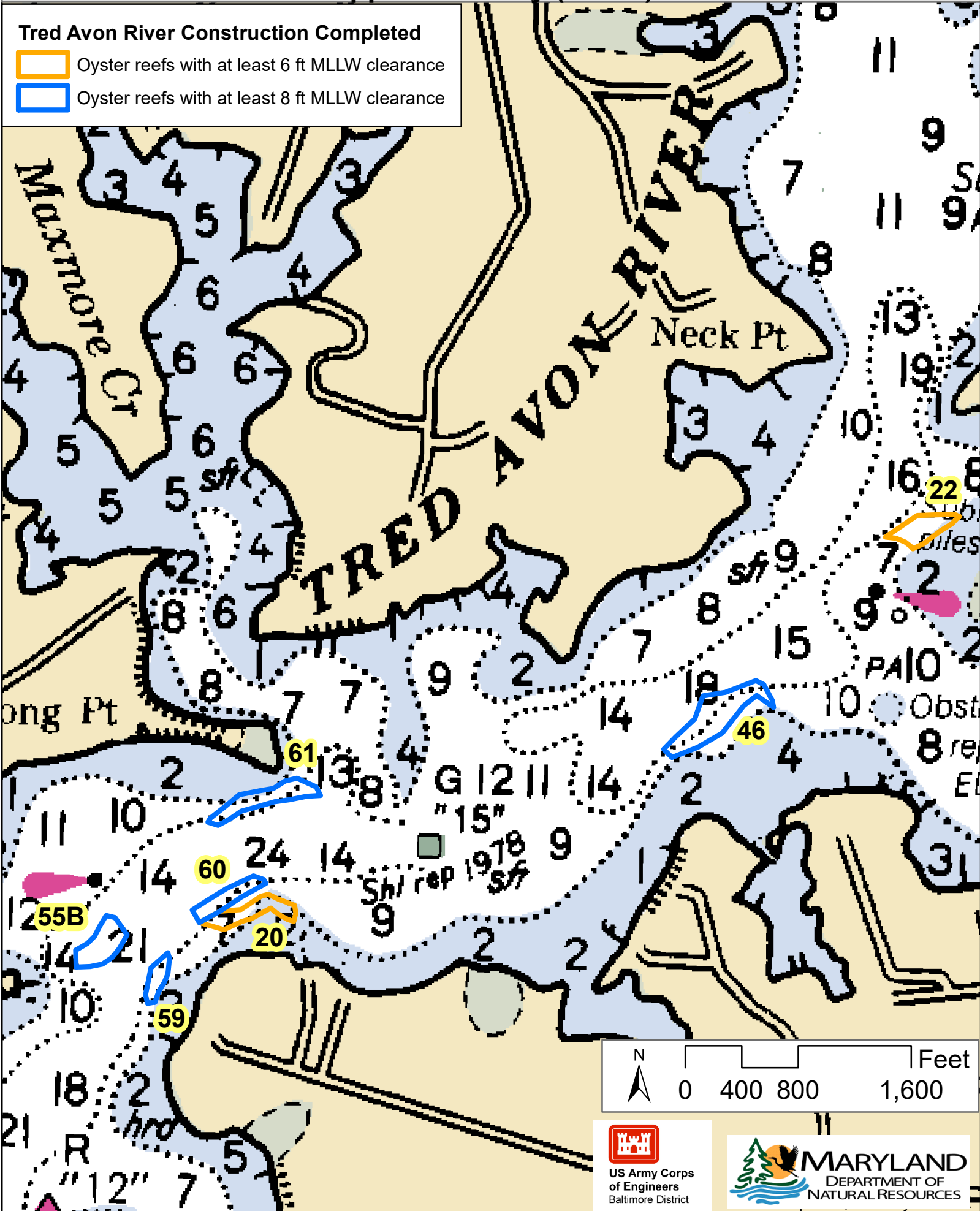
-  Oyster reefs with at least 6 ft MLLW clearance
-  Oyster reefs with at least 8 ft MLLW clearance



Tred Avon Oyster Restoration Upper Tributary (Box 3)

Tred Avon River Construction Completed

-  Oyster reefs with at least 6 ft MLLW clearance
-  Oyster reefs with at least 8 ft MLLW clearance



**Tred Avon River Alternate Substrate Oyster Reef Coordinates
(NAD 1983 State Plan Maryland FIPS 1900)**

Restoration Type	USACE Contract Number	Site Number	Acres	Latitude	Longitude	Minimum Water Clearance Above (ft)
Alternate Substrate and Seed	TA-1	SS 46	3.30	38.73609	-76.12478	8
	TA-1	SS 46	3.30	38.73616	-76.12422	8
	TA-1	SS 46	3.30	38.73640	-76.12347	8
	TA-1	SS 46	3.30	38.73632	-76.12327	8
	TA-1	SS 46	3.30	38.73601	-76.12305	8
	TA-1	SS 46	3.30	38.73588	-76.12302	8
	TA-1	SS 46	3.30	38.73611	-76.12344	8
	TA-1	SS 46	3.30	38.73591	-76.12376	8
	TA-1	SS 46	3.30	38.73537	-76.12429	8
	TA-1	SS 46	3.30	38.73509	-76.12489	8
	TA-1	SS 46	3.30	38.73488	-76.12553	8
	TA-1	SS 46	3.30	38.73504	-76.12573	8
	TA-1	SS 46	3.30	38.73526	-76.12547	8
	TA-1	SS 46	3.30	38.73563	-76.12498	8
Alternate Substrate and Seed	TA-2	SS 61	1.90	38.73405	-76.13626	8
	TA-2	SS 61	1.90	38.73414	-76.13573	8
	TA-2	SS 61	1.90	38.73418	-76.13541	8
	TA-2	SS 61	1.90	38.73426	-76.13526	8
	TA-2	SS 61	1.90	38.73433	-76.13513	8
	TA-2	SS 61	1.90	38.73439	-76.13483	8
	TA-2	SS 61	1.90	38.73423	-76.13436	8
	TA-2	SS 61	1.90	38.73406	-76.13424	8
	TA-2	SS 61	1.90	38.73404	-76.13458	8
	TA-2	SS 61	1.90	38.73397	-76.13502	8
	TA-2	SS 61	1.90	38.73393	-76.13538	8
	TA-2	SS 61	1.90	38.73383	-76.13580	8
	TA-2	SS 61	1.90	38.73374	-76.13620	8
	TA-2	SS 61	1.90	38.73358	-76.13649	8
TA-2	SS 61	1.90	38.73346	-76.13677	8	
TA-2	SS 61	1.90	38.73351	-76.13703	8	
TA-2	SS 61	1.90	38.73359	-76.13697	8	
TA-2	SS 61	1.90	38.73405	-76.13626	8	
Alternate Substrate and Seed	TA-3	SS 60	1.33	38.73180	-76.13739	8
	TA-3	SS 60	1.33	38.73200	-76.13702	8
	TA-3	SS 60	1.33	38.73223	-76.13654	8
	TA-3	SS 60	1.33	38.73248	-76.13588	8
	TA-3	SS 60	1.33	38.73242	-76.13563	8
	TA-3	SS 60	1.33	38.73234	-76.13556	8
	TA-3	SS 60	1.33	38.73225	-76.13577	8
	TA-3	SS 60	1.33	38.73217	-76.13595	8
	TA-3	SS 60	1.33	38.73206	-76.13618	8
	TA-3	SS 60	1.33	38.73179	-76.13670	8
	TA-3	SS 60	1.33	38.73156	-76.13721	8
	TA-3	SS 60	1.33	38.73154	-76.13741	8
TA-3	SS 60	1.33	38.73153	-76.13742	8	
TA-3	SS 60	1.33	38.73180	-76.13739	8	

**Tred Avon River Alternate Substrate Oyster Reef Coordinates
(NAD 1983 State Plan Maryland FIPS 1900)**

Restoration Type	USACE Contract Number	Site Number	Acres	Latitude	Longitude	Minimum Water Clearance Above (ft)
Alternate Substrate and Seed	TA-4	SS 59	0.74	38.73096	-76.13798	8
	TA-4	SS 59	0.74	38.73085	-76.13794	8
	TA-4	SS 59	0.74	38.73055	-76.13798	8
	TA-4	SS 59	0.74	38.73039	-76.13806	8
	TA-4	SS 59	0.74	38.73022	-76.13819	8
	TA-4	SS 59	0.74	38.73000	-76.13829	8
	TA-4	SS 59	0.74	38.72999	-76.13835	8
	TA-4	SS 59	0.74	38.72997	-76.13848	8
	TA-4	SS 59	0.74	38.72999	-76.13848	8
	TA-4	SS 59	0.74	38.73014	-76.13852	8
	TA-4	SS 59	0.74	38.73067	-76.13840	8
Alternate Substrate and Seed	TA-5	SS 56	0.80	38.71057	-76.14221	8
	TA-5	SS 56	0.80	38.71039	-76.14223	8
	TA-5	SS 56	0.80	38.71011	-76.14223	8
	TA-5	SS 56	0.80	38.70985	-76.14223	8
	TA-5	SS 56	0.80	38.70985	-76.14248	8
	TA-5	SS 56	0.80	38.70986	-76.14253	8
	TA-5	SS 56	0.80	38.70986	-76.14270	8
	TA-5	SS 56	0.80	38.70985	-76.14286	8
	TA-5	SS 56	0.80	38.70979	-76.14297	8
	TA-5	SS 56	0.80	38.70972	-76.14304	8
	TA-5	SS 56	0.80	38.70979	-76.14304	8
	TA-5	SS 56	0.80	38.71002	-76.14281	8
	TA-5	SS 56	0.80	38.71015	-76.14274	8
	TA-5	SS 56	0.80	38.71031	-76.14271	8
	TA-5	SS 56	0.80	38.71038	-76.14259	8
Alternate Substrate and Seed	TA-6	SS 41	3.44	38.70607	-76.14271	8
	TA-6	SS 41	3.44	38.70606	-76.14211	8
	TA-6	SS 41	3.44	38.70604	-76.14145	8
	TA-6	SS 41	3.44	38.70586	-76.14122	8
	TA-6	SS 41	3.44	38.70543	-76.14107	8
	TA-6	SS 41	3.44	38.70526	-76.14120	8
	TA-6	SS 41	3.44	38.70524	-76.14166	8
	TA-6	SS 41	3.44	38.70527	-76.14200	8
	TA-6	SS 41	3.44	38.70519	-76.14224	8
	TA-6	SS 41	3.44	38.70509	-76.14264	8
	TA-6	SS 41	3.44	38.70548	-76.14298	8
Alternate Substrate and Seed	TA-7	SS 40	1.38	38.70501	-76.14346	8
	TA-7	SS 40	1.38	38.70481	-76.14309	8
	TA-7	SS 40	1.38	38.70459	-76.14273	8
	TA-7	SS 40	1.38	38.70430	-76.14296	8
	TA-7	SS 40	1.38	38.70449	-76.14357	8
	TA-7	SS 40	1.38	38.70450	-76.14440	8
	TA-7	SS 40	1.38	38.70467	-76.14406	8
	TA-7	SS 40	1.38	38.70487	-76.14402	8
	TA-7	SS 40	1.38	38.70492	-76.14366	8

**Tred Avon River Alternate Substrate Oyster Reef Coordinates
(NAD 1983 State Plan Maryland FIPS 1900)**

Restoration Type	USACE Contract Number	Site Number	Acres	Latitude	Longitude	Minimum Water Clearance Above (ft)
Alternate Substrate and Seed	TA-8	SS 53	2.64	38.70464	-76.15570	8
	TA-8	SS 53	2.64	38.70427	-76.15536	8
	TA-8	SS 53	2.64	38.70407	-76.15512	8
	TA-8	SS 53	2.64	38.70397	-76.15487	8
	TA-8	SS 53	2.64	38.70383	-76.15492	8
	TA-8	SS 53	2.64	38.70381	-76.15531	8
	TA-8	SS 53	2.64	38.70381	-76.15542	8
	TA-8	SS 53	2.64	38.70388	-76.15564	8
	TA-8	SS 53	2.64	38.70391	-76.15583	8
	TA-8	SS 53	2.64	38.70393	-76.15618	8
	TA-8	SS 53	2.64	38.70392	-76.15629	8
	TA-8	SS 53	2.64	38.70400	-76.15642	8
	TA-8	SS 53	2.64	38.70407	-76.15658	8
	TA-8	SS 53	2.64	38.70428	-76.15715	8
	TA-8	SS 53	2.64	38.70437	-76.15725	8
	TA-8	SS 53	2.64	38.70444	-76.15708	8
	TA-8	SS 53	2.64	38.70450	-76.15691	8
	TA-8	SS 53	2.64	38.70455	-76.15675	8
	TA-8	SS 53	2.64	38.70458	-76.15646	8
	TA-8	SS 53	2.64	38.70458	-76.15612	8
TA-8	SS 53	2.64	38.70464	-76.15570	8	
Alternate Substrate and Seed	TA-9	SS 39	2.67	38.70102	-76.15728	8
	TA-9	SS 39	2.67	38.70091	-76.15681	8
	TA-9	SS 39	2.67	38.70090	-76.15646	8
	TA-9	SS 39	2.67	38.70072	-76.15615	8
	TA-9	SS 39	2.67	38.70053	-76.15587	8
	TA-9	SS 39	2.67	38.70032	-76.15567	8
	TA-9	SS 39	2.67	38.70025	-76.15545	8
	TA-9	SS 39	2.67	38.69993	-76.15564	8
	TA-9	SS 39	2.67	38.70014	-76.15590	8
	TA-9	SS 39	2.67	38.70032	-76.15628	8
	TA-9	SS 39	2.67	38.70037	-76.15654	8
	TA-9	SS 39	2.67	38.70044	-76.15687	8
	TA-9	SS 39	2.67	38.70049	-76.15727	8
	TA-9	SS 39	2.67	38.70051	-76.15772	8
	TA-9	SS 39	2.67	38.70044	-76.15804	8
	TA-9	SS 39	2.67	38.70068	-76.15816	8
TA-9	SS 39	2.67	38.70102	-76.15728	8	
Alternate Substrate and Seed	TA-10	SS 38	3.32	38.70113	-76.16542	8
	TA-10	SS 38	3.32	38.70081	-76.16499	8
	TA-10	SS 38	3.32	38.70081	-76.16505	8
	TA-10	SS 38	3.32	38.70057	-76.16516	8
	TA-10	SS 38	3.32	38.69981	-76.16560	8
	TA-10	SS 38	3.32	38.69901	-76.16616	8
	TA-10	SS 38	3.32	38.69900	-76.16625	8
	TA-10	SS 38	3.32	38.70009	-76.16634	8
	TA-10	SS 38	3.32	38.70044	-76.16633	8
	TA-10	SS 38	3.32	38.70050	-76.16631	8
	TA-10	SS 38	3.32	38.70076	-76.16589	8
TA-10	SS 38	3.32	38.70113	-76.16542	8	

**Tred Avon River Alternate Substrate Oyster Reef Coordinates
(NAD 1983 State Plan Maryland FIPS 1900)**

Restoration Type	USACE Contract Number	Site Number	Acres	Latitude	Longitude	Minimum Water Clearance Above (ft)
Alternate Substrate and Seed	TA-11	SS 44	1.75	38.71328	-76.13423	8
	TA-11	SS 44	1.75	38.71329	-76.13366	8
	TA-11	SS 44	1.75	38.71320	-76.13330	8
	TA-11	SS 44	1.75	38.71320	-76.13255	8
	TA-11	SS 44	1.75	38.71302	-76.13258	8
	TA-11	SS 44	1.75	38.71263	-76.13309	8
	TA-11	SS 44	1.75	38.71265	-76.13362	8
	TA-11	SS 44	1.75	38.71302	-76.13407	8
Alternate Substrate and Seed	TA-12	SS 43	0.81	38.71542	-76.12942	8
	TA-12	SS 43	0.81	38.71537	-76.12828	8
	TA-12	SS 43	0.81	38.71537	-76.12790	8
	TA-12	SS 43	0.81	38.71547	-76.12754	8
	TA-12	SS 43	0.81	38.71539	-76.12748	8
	TA-12	SS 43	0.81	38.71532	-76.12740	8
	TA-12	SS 43	0.81	38.71525	-76.12730	8
	TA-12	SS 43	0.81	38.71520	-76.12719	8
	TA-12	SS 43	0.81	38.71520	-76.12733	8
	TA-12	SS 43	0.81	38.71521	-76.12780	8
	TA-12	SS 43	0.81	38.71527	-76.12852	8
	TA-12	SS 43	0.81	38.71521	-76.12896	8
	TA-12	SS 43	0.81	38.71524	-76.12934	8
TA-12	SS 43	0.81	38.71542	-76.12942	8	
Alternate Substrate and Seed	TA-13	SS 05	4.11	38.705492	-76.154932	6
	TA-13	SS 05	4.11	38.705335	-76.154831	6
	TA-13	SS 05	4.11	38.705016	-76.154566	6
	TA-13	SS 05	4.11	38.704166	-76.154295	6
	TA-13	SS 05	4.11	38.704012	-76.15417	6
	TA-13	SS 05	4.11	38.703834	-76.153978	6
	TA-13	SS 05	4.11	38.703785	-76.154003	6
	TA-13	SS 05	4.11	38.703618	-76.154036	6
	TA-13	SS 05	4.11	38.703453	-76.154102	6
	TA-13	SS 05	4.11	38.703623	-76.154286	6
	TA-13	SS 05	4.11	38.70377	-76.154556	6
	TA-13	SS 05	4.11	38.703831	-76.154916	6
	TA-13	SS 05	4.11	38.703975	-76.154868	6
	TA-13	SS 05	4.11	38.704072	-76.15512	6
	TA-13	SS 05	4.11	38.704267	-76.155361	6
	TA-13	SS 05	4.11	38.704643	-76.155705	6
TA-13	SS 05	4.11	38.705005	-76.155551	6	
TA-13	SS 05	4.11	38.705652	-76.155287	6	
TA-13	SS 05	4.11	38.705492	-76.154932	6	
Alternate Substrate and Seed	TA-15	SS 22	1.43	38.739634	-76.118458	6
	TA-15	SS 22	1.43	38.739626	-76.118493	6
	TA-15	SS 22	1.43	38.739495	-76.118646	6
	TA-15	SS 22	1.43	38.739364	-76.118915	6
	TA-15	SS 22	1.43	38.739102	-76.119347	6
	TA-15	SS 22	1.43	38.739001	-76.119608	6
	TA-15	SS 22	1.43	38.739046	-76.119657	6
	TA-15	SS 22	1.43	38.739128	-76.1198	6
	TA-15	SS 22	1.43	38.739205	-76.120036	6
TA-15	SS 22	1.43	38.739221	-76.120291	6	

**Tred Avon River Alternate Substrate Oyster Reef Coordinates
(NAD 1983 State Plan Maryland FIPS 1900)**

Restoration Type	USACE Contract Number	Site Number	Acres	Latitude	Longitude	Minimum Water Clearance Above (ft)
Alternate Substrate and Seed	TA-15	SS_22	1.43	38.739652	-76.119517	6
	TA-15	SS_22	1.43	38.739683	-76.11859	6
	TA-15	SS_22	1.43	38.739634	-76.118458	6
Alternate Substrate and Seed	TA-16	SS_27	1.34	38.718052	-76.149096	6
	TA-16	SS_27	1.34	38.718055	-76.149087	6
	TA-16	SS_27	1.34	38.718082	-76.149017	6
	TA-16	SS_27	1.34	38.718119	-76.148949	6
	TA-16	SS_27	1.34	38.718164	-76.148873	6
	TA-16	SS_27	1.34	38.718208	-76.148815	6
	TA-16	SS_27	1.34	38.718254	-76.14876	6
	TA-16	SS_27	1.34	38.718335	-76.148708	6
	TA-16	SS_27	1.34	38.718389	-76.148669	6
	TA-16	SS_27	1.34	38.718402	-76.148642	6
	TA-16	SS_27	1.34	38.718571	-76.148469	6
	TA-16	SS_27	1.34	38.718679	-76.148439	6
	TA-16	SS_27	1.34	38.718791	-76.148369	6
	TA-16	SS_27	1.34	38.719043	-76.148363	6
	TA-16	SS_27	1.34	38.719572	-76.148596	6
	TA-16	SS_27	1.34	38.719541	-76.148501	6
	TA-16	SS_27	1.34	38.718868	-76.148081	6
	TA-16	SS_27	1.34	38.718595	-76.148057	6
	TA-16	SS_27	1.34	38.718305	-76.148084	6
	TA-16	SS_27	1.34	38.7181	-76.148126	6
	TA-16	SS_27	1.34	38.718016	-76.148298	6
	TA-16	SS_27	1.34	38.718031	-76.149015	6
	TA-16	SS_27	1.34	38.718052	-76.149096	6
Alternate Substrate and Seed	TA-17	SS_55B	1.69	38.73066374	-76.1402548	8
	TA-17	SS_55B	1.69	38.7309943	-76.1402685	8
	TA-17	SS_55B	1.69	38.73099411	-76.1402675	8
	TA-17	SS_55B	1.69	38.73112953	-76.1399855	8
	TA-17	SS_55B	1.69	38.73126821	-76.1398074	8
	TA-17	SS_55B	1.69	38.73147629	-76.1396723	8
	TA-17	SS_55B	1.69	38.73166843	-76.1395292	8
	TA-17	SS_55B	1.69	38.7316769	-76.1395216	8
	TA-17	SS_55B	1.69	38.73164125	-76.1393138	8
	TA-17	SS_55B	1.69	38.73163446	-76.1393074	8
	TA-17	SS_55B	1.69	38.73130756	-76.1389991	8
	TA-17	SS_55B	1.69	38.73104747	-76.1391799	8
	TA-17	SS_55B	1.69	38.73085658	-76.1393621	8
	TA-17	SS_55B	1.69	38.73072671	-76.1396015	8
	TA-17	SS_55B	1.69	38.73067978	-76.139904	8
	TA-17	SS_55B	1.69	38.73066466	-76.1401603	8
	TA-17	SS_55B	1.69	38.73066374	-76.1402548	8