

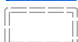


### Legend

#### Tred Avon Construction Completed

-  Oyster reefs with at least 6 ft MLLW clearance
-  Oyster reefs with at least 8 ft MLLW clearance
-  Tred Avon Sanctuary Boundary

The U.S. Army Corps of Engineers and Maryland Department of Natural Resources have placed rock (sites 38, 41, and 46) and mixed clam shell (all remaining sites) in the areas identified on this map to restore oyster reef habitat in the Tred Avon River. In those areas, water depths are 1 ft shallower than what is currently shown on navigational charts. NOAA charts will be revised in the future to reflect these changes. Please be vigilant when navigating through these areas.

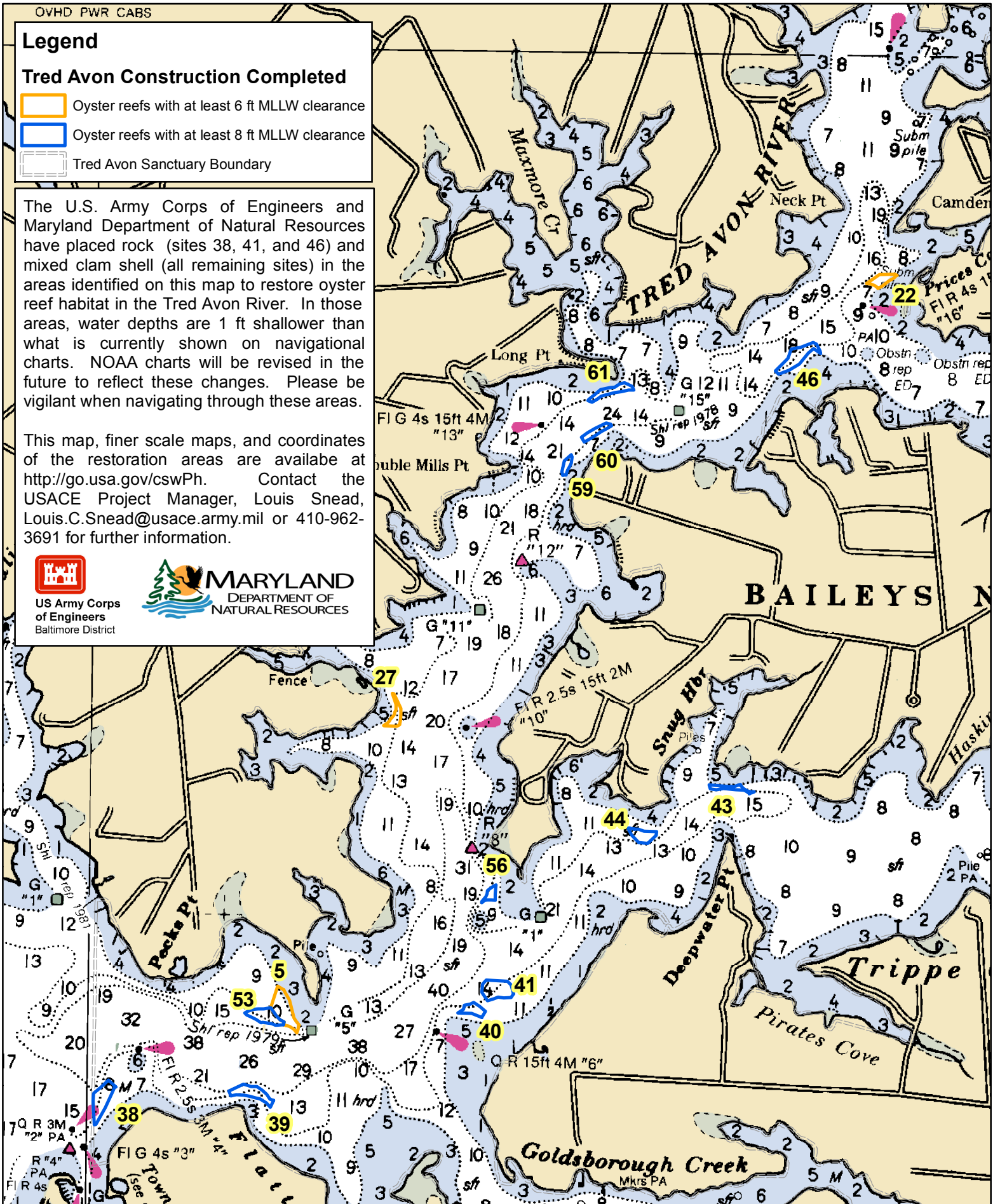
This map, finer scale maps, and coordinates of the restoration areas are available at <http://go.usa.gov/cswPh>. Contact the USACE Project Manager, Louis Snead, [Louis.C.Snead@usace.army.mil](mailto:Louis.C.Snead@usace.army.mil) or 410-962-3691 for further information.



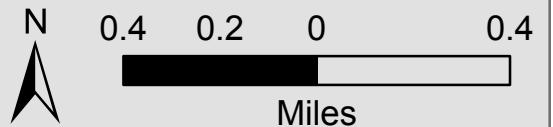
US Army Corps of Engineers  
Baltimore District



MARYLAND  
DEPARTMENT OF  
NATURAL RESOURCES






## Tred Avon River Oyster Restoration

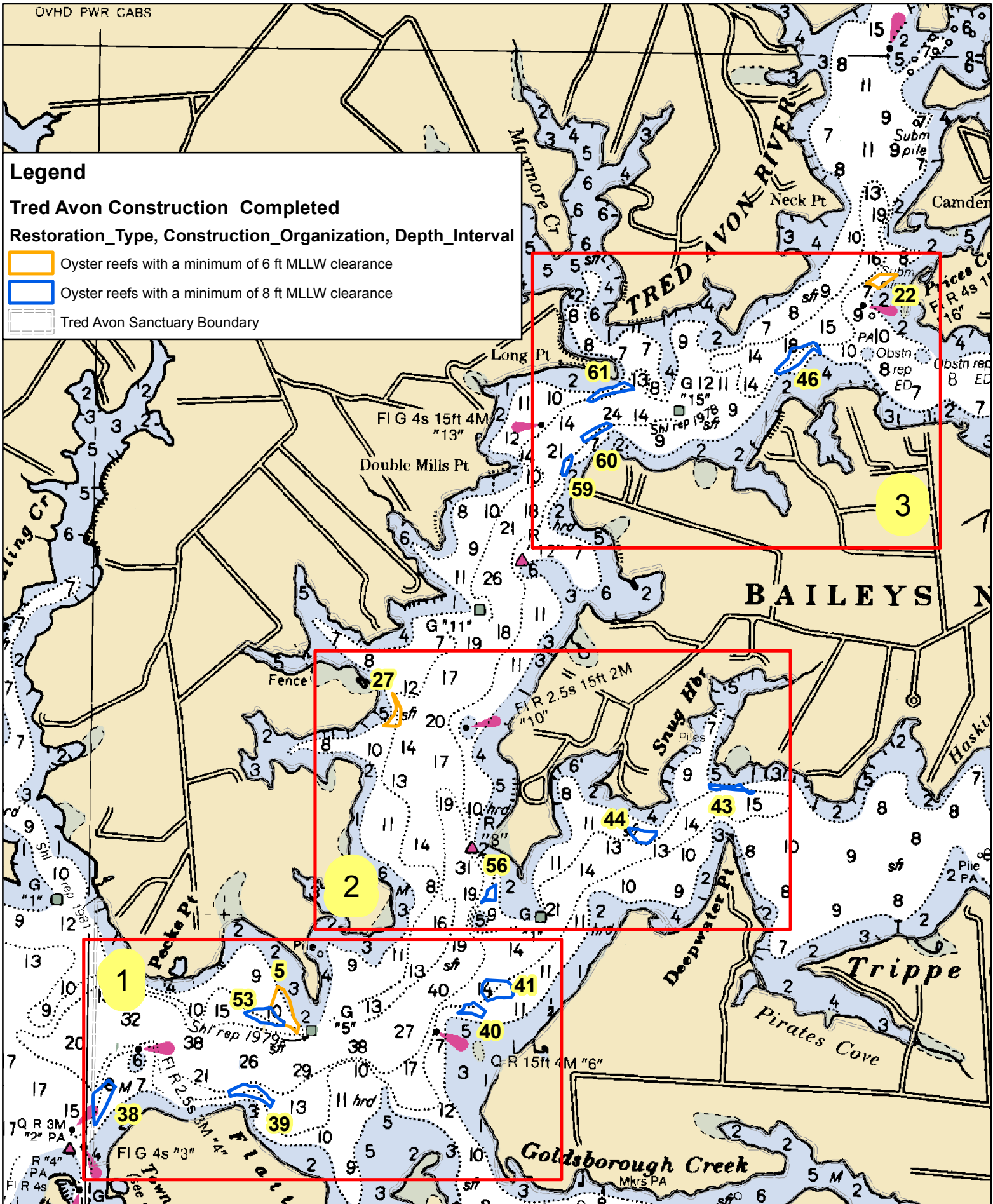


### Legend

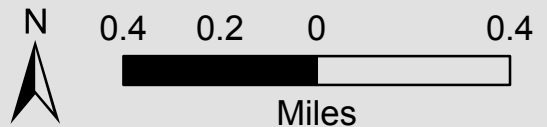
#### Tred Avon Construction Completed

#### Restoration\_Type, Construction\_Organization, Depth\_Interval

-  Oyster reefs with a minimum of 6 ft MLLW clearance
-  Oyster reefs with a minimum of 8 ft MLLW clearance
-  Tred Avon Sanctuary Boundary






## Tred Avon River Oyster Restoration

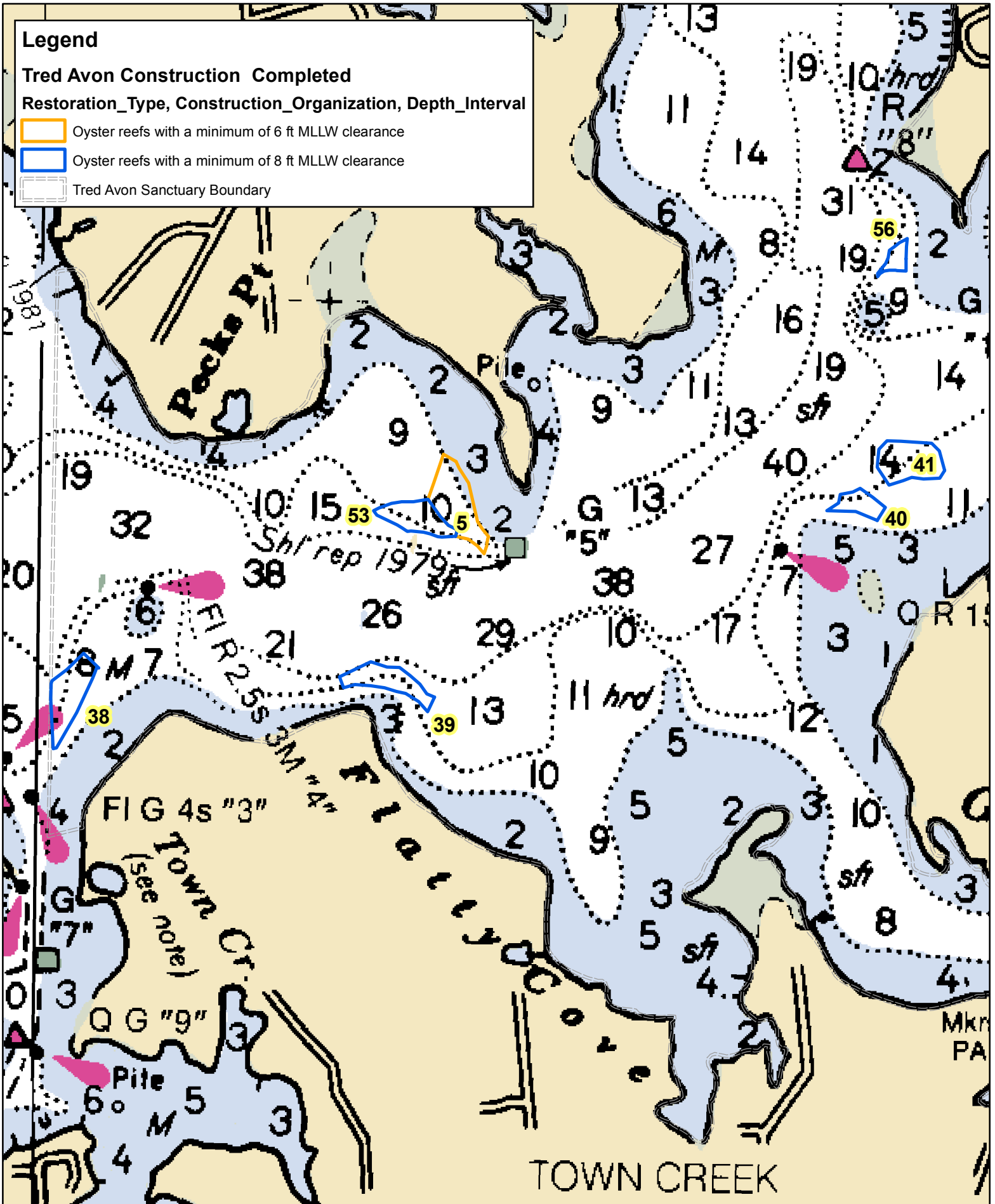


**Legend**

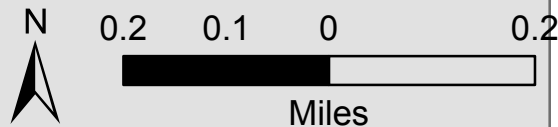
**Tred Avon Construction Completed**

**Restoration\_Type, Construction\_Organization, Depth\_Interval**

-  Oyster reefs with a minimum of 6 ft MLLW clearance
-  Oyster reefs with a minimum of 8 ft MLLW clearance
-  Tred Avon Sanctuary Boundary





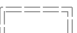
Tred Avon River Oyster Restoration  
Lower Tributary (Box 1)

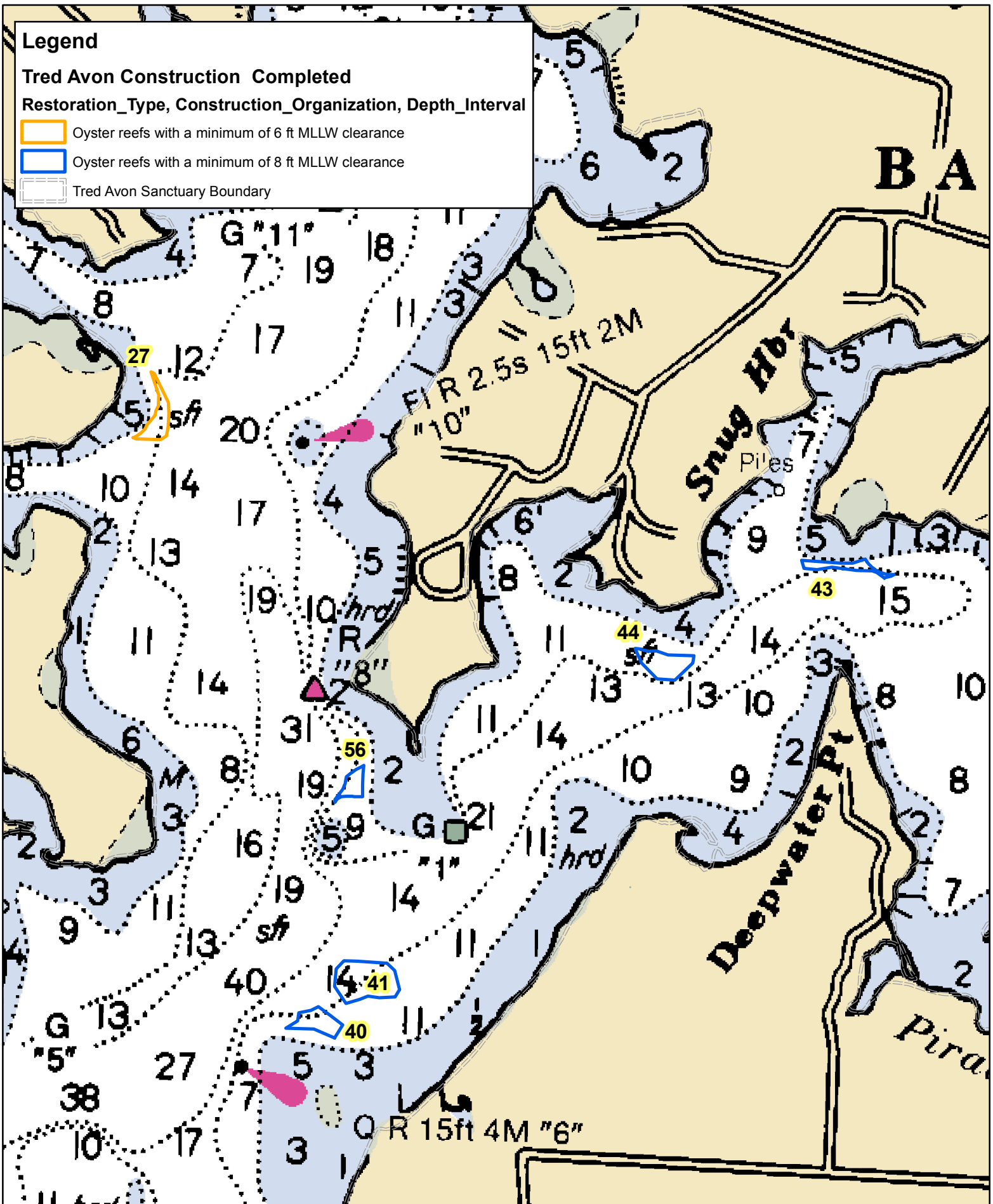


**Legend**

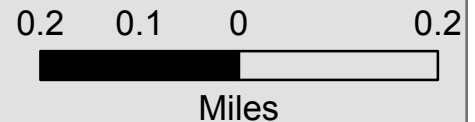
**Tred Avon Construction Completed**

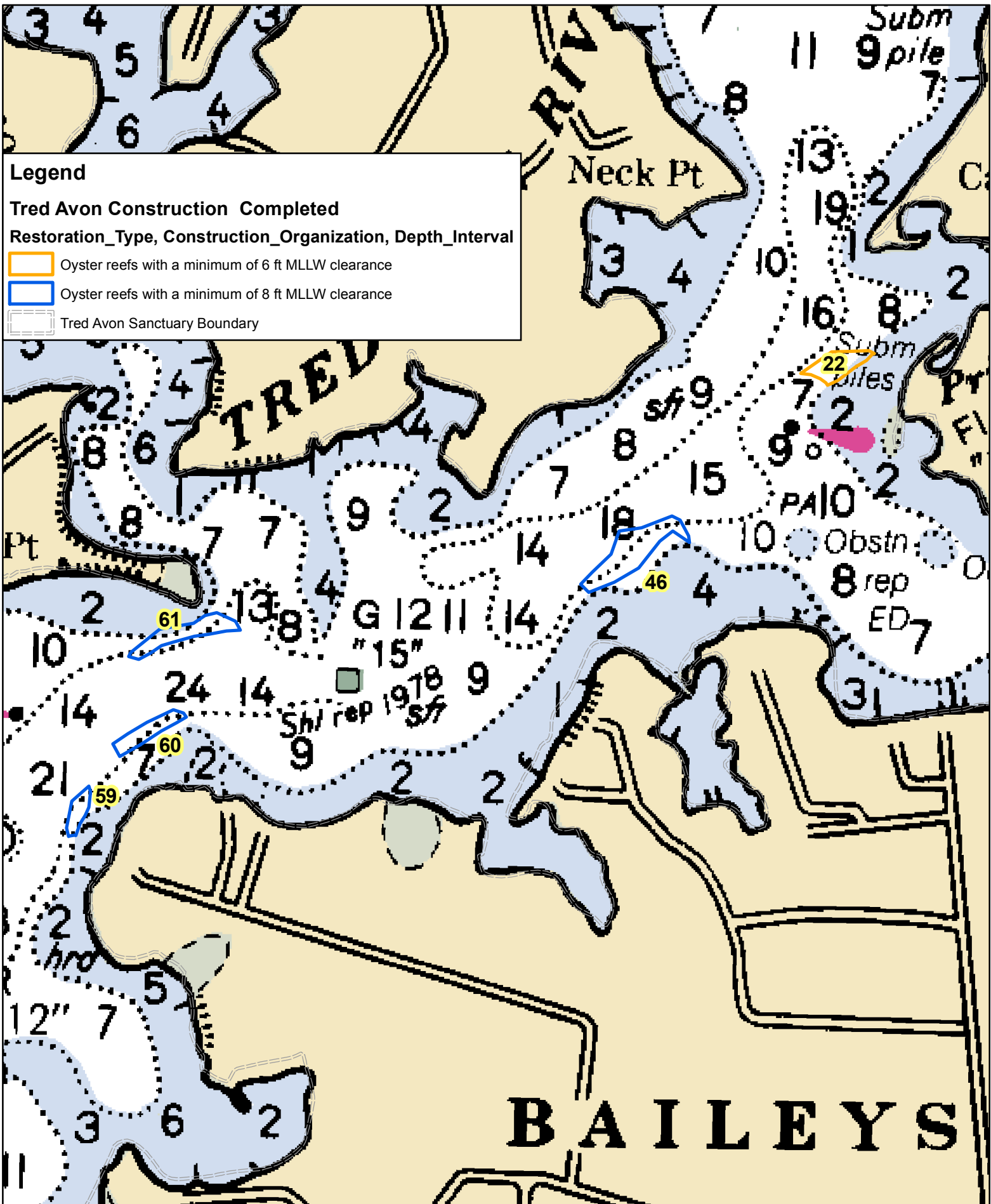
**Restoration\_Type, Construction\_Organization, Depth\_Interval**

-  Oyster reefs with a minimum of 6 ft MLLW clearance
-  Oyster reefs with a minimum of 8 ft MLLW clearance
-  Tred Avon Sanctuary Boundary



Tred Avon River Oyster Restoration  
Middle Tributary (Box 2)





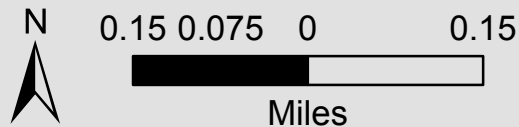
**Legend**

**Tred Avon Construction Completed**

**Restoration\_Type, Construction\_Organization, Depth\_Interval**

- Oyster reefs with a minimum of 6 ft MLLW clearance
- Oyster reefs with a minimum of 8 ft MLLW clearance
- Tred Avon Sanctuary Boundary

Tred Avon River Oyster Restoration  
Upper Tributary (Box 3)



**Tred Avon River Alternate Substrate Oyster Reef Coordinates  
(NAD 1983 State Plan Maryland FIPS 1900)**

<b>Restoration Type</b>	<b>Site ID</b>	<b>Blueprint Site Number</b>	<b>Acres</b>	<b>Latitude</b>	<b>Longitude</b>	<b>Minimum Water Clearance Above (ft)</b>
Alternate Substrate and Seed	TA-1	SS_46	3.30	38.73609	-76.12478	8
	TA-1	SS_46	3.30	38.73616	-76.12422	8
	TA-1	SS_46	3.30	38.73640	-76.12347	8
	TA-1	SS_46	3.30	38.73632	-76.12327	8
	TA-1	SS_46	3.30	38.73601	-76.12305	8
	TA-1	SS_46	3.30	38.73588	-76.12302	8
	TA-1	SS_46	3.30	38.73611	-76.12344	8
	TA-1	SS_46	3.30	38.73591	-76.12376	8
	TA-1	SS_46	3.30	38.73537	-76.12429	8
	TA-1	SS_46	3.30	38.73509	-76.12489	8
	TA-1	SS_46	3.30	38.73488	-76.12553	8
	TA-1	SS_46	3.30	38.73504	-76.12573	8
	TA-1	SS_46	3.30	38.73526	-76.12547	8
	TA-1	SS_46	3.30	38.73563	-76.12498	8
Alternate Substrate and Seed	TA-2	SS_61	1.90	38.73405	-76.13626	8
	TA-2	SS_61	1.90	38.73414	-76.13573	8
	TA-2	SS_61	1.90	38.73418	-76.13541	8
	TA-2	SS_61	1.90	38.73426	-76.13526	8
	TA-2	SS_61	1.90	38.73433	-76.13513	8
	TA-2	SS_61	1.90	38.73439	-76.13483	8
	TA-2	SS_61	1.90	38.73423	-76.13436	8
	TA-2	SS_61	1.90	38.73406	-76.13424	8
	TA-2	SS_61	1.90	38.73404	-76.13458	8
	TA-2	SS_61	1.90	38.73397	-76.13502	8
	TA-2	SS_61	1.90	38.73393	-76.13538	8
	TA-2	SS_61	1.90	38.73383	-76.13580	8
	TA-2	SS_61	1.90	38.73374	-76.13620	8
	TA-2	SS_61	1.90	38.73358	-76.13649	8
	TA-2	SS_61	1.90	38.73346	-76.13677	8
	TA-2	SS_61	1.90	38.73351	-76.13703	8
	TA-2	SS_61	1.90	38.73359	-76.13697	8
TA-2	SS_61	1.90	38.73405	-76.13626	8	
Alternate Substrate and Seed	TA-3	SS_60	1.33	38.73180	-76.13739	8
	TA-3	SS_60	1.33	38.73200	-76.13702	8
	TA-3	SS_60	1.33	38.73223	-76.13654	8
	TA-3	SS_60	1.33	38.73248	-76.13588	8
	TA-3	SS_60	1.33	38.73242	-76.13563	8
	TA-3	SS_60	1.33	38.73234	-76.13556	8
	TA-3	SS_60	1.33	38.73225	-76.13577	8
	TA-3	SS_60	1.33	38.73217	-76.13595	8

**Tred Avon River Alternate Substrate Oyster Reef Coordinates  
(NAD 1983 State Plan Maryland FIPS 1900)**

Restoration Type	Site ID	Blueprint Site Number	Acres	Latitude	Longitude	Minimum Water Clearance Above (ft)
	TA-3	SS_60	1.33	38.73206	-76.13618	8
	TA-3	SS_60	1.33	38.73179	-76.13670	8
	TA-3	SS_60	1.33	38.73156	-76.13721	8
	TA-3	SS_60	1.33	38.73154	-76.13741	8
	TA-3	SS_60	1.33	38.73153	-76.13742	8
	TA-3	SS_60	1.33	38.73180	-76.13739	8
Alternate Substrate and Seed	TA-4	SS_59	0.74	38.73096	-76.13798	8
	TA-4	SS_59	0.74	38.73085	-76.13794	8
	TA-4	SS_59	0.74	38.73055	-76.13798	8
	TA-4	SS_59	0.74	38.73039	-76.13806	8
	TA-4	SS_59	0.74	38.73022	-76.13819	8
	TA-4	SS_59	0.74	38.73000	-76.13829	8
	TA-4	SS_59	0.74	38.72999	-76.13835	8
	TA-4	SS_59	0.74	38.72997	-76.13848	8
	TA-4	SS_59	0.74	38.72999	-76.13848	8
	TA-4	SS_59	0.74	38.73014	-76.13852	8
	TA-4	SS_59	0.74	38.73067	-76.13840	8
	TA-4	SS_59	0.74	38.73096	-76.13798	8
Alternate Substrate and Seed	TA-5	SS_56	0.80	38.71057	-76.14221	8
	TA-5	SS_56	0.80	38.71039	-76.14223	8
	TA-5	SS_56	0.80	38.71011	-76.14223	8
	TA-5	SS_56	0.80	38.70985	-76.14223	8
	TA-5	SS_56	0.80	38.70985	-76.14248	8
	TA-5	SS_56	0.80	38.70986	-76.14253	8
	TA-5	SS_56	0.80	38.70986	-76.14270	8
	TA-5	SS_56	0.80	38.70985	-76.14286	8
	TA-5	SS_56	0.80	38.70979	-76.14297	8
	TA-5	SS_56	0.80	38.70972	-76.14304	8
	TA-5	SS_56	0.80	38.70979	-76.14304	8
	TA-5	SS_56	0.80	38.71002	-76.14281	8
	TA-5	SS_56	0.80	38.71015	-76.14274	8
	TA-5	SS_56	0.80	38.71031	-76.14271	8
	TA-5	SS_56	0.80	38.71038	-76.14259	8
	TA-5	SS_56	0.80	38.71048	-76.14243	8
TA-5	SS_56	0.80	38.71057	-76.14221	8	
	TA-6	SS_41	3.44	38.70607	-76.14271	8
	TA-6	SS_41	3.44	38.70606	-76.14211	8
	TA-6	SS_41	3.44	38.70604	-76.14145	8
	TA-6	SS_41	3.44	38.70586	-76.14122	8
	TA-6	SS_41	3.44	38.70543	-76.14107	8
	TA-6	SS_41	3.44	38.70526	-76.14120	8

**Tred Avon River Alternate Substrate Oyster Reef Coordinates  
(NAD 1983 State Plan Maryland FIPS 1900)**

<b>Restoration Type</b>	<b>Site ID</b>	<b>Blueprint Site Number</b>	<b>Acres</b>	<b>Latitude</b>	<b>Longitude</b>	<b>Minimum Water Clearance Above (ft)</b>
Alternate Substrate and Seed	TA-6	SS_41	3.44	38.70524	-76.14166	8
	TA-6	SS_41	3.44	38.70527	-76.14200	8
	TA-6	SS_41	3.44	38.70519	-76.14224	8
	TA-6	SS_41	3.44	38.70509	-76.14264	8
	TA-6	SS_41	3.44	38.70548	-76.14298	8
	TA-6	SS_41	3.44	38.70588	-76.14294	8
	TA-6	SS_41	3.44	38.70607	-76.14271	8
Alternate Substrate and Seed	TA-7	SS_40	1.38	38.70501	-76.14346	8
	TA-7	SS_40	1.38	38.70481	-76.14309	8
	TA-7	SS_40	1.38	38.70459	-76.14273	8
	TA-7	SS_40	1.38	38.70430	-76.14296	8
	TA-7	SS_40	1.38	38.70449	-76.14357	8
	TA-7	SS_40	1.38	38.70450	-76.14440	8
	TA-7	SS_40	1.38	38.70467	-76.14406	8
	TA-7	SS_40	1.38	38.70487	-76.14402	8
	TA-7	SS_40	1.38	38.70492	-76.14366	8
Alternate Substrate and Seed	TA-8	SS_53	2.64	38.70464	-76.15570	8
	TA-8	SS_53	2.64	38.70427	-76.15536	8
	TA-8	SS_53	2.64	38.70407	-76.15512	8
	TA-8	SS_53	2.64	38.70397	-76.15487	8
	TA-8	SS_53	2.64	38.70383	-76.15492	8
	TA-8	SS_53	2.64	38.70381	-76.15531	8
	TA-8	SS_53	2.64	38.70381	-76.15542	8
	TA-8	SS_53	2.64	38.70388	-76.15564	8
	TA-8	SS_53	2.64	38.70391	-76.15583	8
	TA-8	SS_53	2.64	38.70393	-76.15618	8
	TA-8	SS_53	2.64	38.70392	-76.15629	8
	TA-8	SS_53	2.64	38.70400	-76.15642	8
	TA-8	SS_53	2.64	38.70407	-76.15658	8
	TA-8	SS_53	2.64	38.70428	-76.15715	8
	TA-8	SS_53	2.64	38.70437	-76.15725	8
	TA-8	SS_53	2.64	38.70444	-76.15708	8
	TA-8	SS_53	2.64	38.70450	-76.15691	8
	TA-8	SS_53	2.64	38.70455	-76.15675	8
	TA-8	SS_53	2.64	38.70458	-76.15646	8
	TA-8	SS_53	2.64	38.70458	-76.15612	8
TA-8	SS_53	2.64	38.70464	-76.15570	8	
	TA-9	SS_39	2.67	38.70102	-76.15728	8
	TA-9	SS_39	2.67	38.70091	-76.15681	8
	TA-9	SS_39	2.67	38.70090	-76.15646	8



**Tred Avon River Alternate Substrate Oyster Reef Coordinates  
(NAD 1983 State Plan Maryland FIPS 1900)**

<b>Restoration Type</b>	<b>Site ID</b>	<b>Blueprint Site Number</b>	<b>Acres</b>	<b>Latitude</b>	<b>Longitude</b>	<b>Minimum Water Clearance Above (ft)</b>
Alternate Substrate and Seed	TA-9	SS_39	2.67	38.70072	-76.15615	8
	TA-9	SS_39	2.67	38.70053	-76.15587	8
	TA-9	SS_39	2.67	38.70032	-76.15567	8
	TA-9	SS_39	2.67	38.70025	-76.15545	8
	TA-9	SS_39	2.67	38.69993	-76.15564	8
	TA-9	SS_39	2.67	38.70014	-76.15590	8
	TA-9	SS_39	2.67	38.70032	-76.15628	8
	TA-9	SS_39	2.67	38.70037	-76.15654	8
	TA-9	SS_39	2.67	38.70044	-76.15687	8
	TA-9	SS_39	2.67	38.70049	-76.15727	8
	TA-9	SS_39	2.67	38.70051	-76.15772	8
	TA-9	SS_39	2.67	38.70044	-76.15804	8
	TA-9	SS_39	2.67	38.70068	-76.15816	8
Alternate Substrate and Seed	TA-10	SS_38	3.32	38.70113	-76.16542	8
	TA-10	SS_38	3.32	38.70081	-76.16499	8
	TA-10	SS_38	3.32	38.70081	-76.16505	8
	TA-10	SS_38	3.32	38.70057	-76.16516	8
	TA-10	SS_38	3.32	38.69981	-76.16560	8
	TA-10	SS_38	3.32	38.69901	-76.16616	8
	TA-10	SS_38	3.32	38.69900	-76.16625	8
	TA-10	SS_38	3.32	38.70009	-76.16634	8
	TA-10	SS_38	3.32	38.70044	-76.16633	8
	TA-10	SS_38	3.32	38.70050	-76.16631	8
	TA-10	SS_38	3.32	38.70076	-76.16589	8
Alternate Substrate and Seed	TA-11	SS_44	1.75	38.71328	-76.13423	8
	TA-11	SS_44	1.75	38.71329	-76.13366	8
	TA-11	SS_44	1.75	38.71320	-76.13330	8
	TA-11	SS_44	1.75	38.71320	-76.13255	8
	TA-11	SS_44	1.75	38.71302	-76.13258	8
	TA-11	SS_44	1.75	38.71263	-76.13309	8
	TA-11	SS_44	1.75	38.71265	-76.13362	8
	TA-11	SS_44	1.75	38.71302	-76.13407	8
Alternate Substrate and Seed	TA-12	SS_43	0.81	38.71542	-76.12942	8
	TA-12	SS_43	0.81	38.71537	-76.12828	8
	TA-12	SS_43	0.81	38.71537	-76.12790	8
	TA-12	SS_43	0.81	38.71547	-76.12754	8
	TA-12	SS_43	0.81	38.71539	-76.12748	8
	TA-12	SS_43	0.81	38.71532	-76.12740	8

**Tred Avon River Alternate Substrate Oyster Reef Coordinates  
(NAD 1983 State Plan Maryland FIPS 1900)**

<b>Restoration Type</b>	<b>Site ID</b>	<b>Blueprint Site Number</b>	<b>Acres</b>	<b>Latitude</b>	<b>Longitude</b>	<b>Minimum Water Clearance Above (ft)</b>
Alternate Substrate and Seed	TA-12	SS_43	0.81	38.71525	-76.12730	8
	TA-12	SS_43	0.81	38.71520	-76.12719	8
	TA-12	SS_43	0.81	38.71520	-76.12733	8
	TA-12	SS_43	0.81	38.71521	-76.12780	8
	TA-12	SS_43	0.81	38.71527	-76.12852	8
	TA-12	SS_43	0.81	38.71521	-76.12896	8
	TA-12	SS_43	0.81	38.71524	-76.12934	8
	TA-12	SS_43	0.81	38.71542	-76.12942	8
Alternate Substrate and Seed	TA-13	SS_05	4.11	38.705492	-76.154932	6
	TA-13	SS_05	4.11	38.705335	-76.154831	6
	TA-13	SS_05	4.11	38.705016	-76.154566	6
	TA-13	SS_05	4.11	38.704166	-76.154295	6
	TA-13	SS_05	4.11	38.704012	-76.15417	6
	TA-13	SS_05	4.11	38.703834	-76.153978	6
	TA-13	SS_05	4.11	38.703785	-76.154003	6
	TA-13	SS_05	4.11	38.703618	-76.154036	6
	TA-13	SS_05	4.11	38.703453	-76.154102	6
	TA-13	SS_05	4.11	38.703623	-76.154286	6
	TA-13	SS_05	4.11	38.70377	-76.154556	6
	TA-13	SS_05	4.11	38.703831	-76.154916	6
	TA-13	SS_05	4.11	38.703975	-76.154868	6
	TA-13	SS_05	4.11	38.704072	-76.15512	6
	TA-13	SS_05	4.11	38.704267	-76.155361	6
	TA-13	SS_05	4.11	38.704643	-76.155705	6
	TA-13	SS_05	4.11	38.705005	-76.155551	6
	TA-13	SS_05	4.11	38.705652	-76.155287	6
TA-13	SS_05	4.11	38.705492	-76.154932	6	
Alternate Substrate and Seed	TA-15	SS_22	1.43	38.739634	-76.118458	6
	TA-15	SS_22	1.43	38.739626	-76.118493	6
	TA-15	SS_22	1.43	38.739495	-76.118646	6
	TA-15	SS_22	1.43	38.739364	-76.118915	6
	TA-15	SS_22	1.43	38.739102	-76.119347	6
	TA-15	SS_22	1.43	38.739001	-76.119608	6
	TA-15	SS_22	1.43	38.739046	-76.119657	6
	TA-15	SS_22	1.43	38.739128	-76.1198	6
	TA-15	SS_22	1.43	38.739205	-76.120036	6
	TA-15	SS_22	1.43	38.739221	-76.120291	6
	TA-15	SS_22	1.43	38.739652	-76.119517	6
	TA-15	SS_22	1.43	38.739683	-76.11859	6
TA-15	SS_22	1.43	38.739634	-76.118458	6	
TA-16	SS_27	1.34	38.718052	-76.149096	6	

**Tred Avon River Alternate Substrate Oyster Reef Coordinates  
(NAD 1983 State Plan Maryland FIPS 1900)**

<b>Restoration Type</b>	<b>Site ID</b>	<b>Blueprint Site Number</b>	<b>Acres</b>	<b>Latitude</b>	<b>Longitude</b>	<b>Minimum Water Clearance Above (ft)</b>
Alternate Substrate and Seed	TA-16	SS_27	1.34	38.718055	-76.149087	6
	TA-16	SS_27	1.34	38.718082	-76.149017	6
	TA-16	SS_27	1.34	38.718119	-76.148949	6
	TA-16	SS_27	1.34	38.718164	-76.148873	6
	TA-16	SS_27	1.34	38.718208	-76.148815	6
	TA-16	SS_27	1.34	38.718254	-76.14876	6
	TA-16	SS_27	1.34	38.718335	-76.148708	6
	TA-16	SS_27	1.34	38.718389	-76.148669	6
	TA-16	SS_27	1.34	38.718402	-76.148642	6
	TA-16	SS_27	1.34	38.718571	-76.148469	6
	TA-16	SS_27	1.34	38.718679	-76.148439	6
	TA-16	SS_27	1.34	38.718791	-76.148369	6
	TA-16	SS_27	1.34	38.719043	-76.148363	6
	TA-16	SS_27	1.34	38.719572	-76.148596	6
	TA-16	SS_27	1.34	38.719541	-76.148501	6
	TA-16	SS_27	1.34	38.718868	-76.148081	6
	TA-16	SS_27	1.34	38.718595	-76.148057	6
	TA-16	SS_27	1.34	38.718305	-76.148084	6
	TA-16	SS_27	1.34	38.7181	-76.148126	6
	TA-16	SS_27	1.34	38.718016	-76.148298	6
TA-16	SS_27	1.34	38.718031	-76.149015	6	
TA-16	SS_27	1.34	38.718052	-76.149096	6	