

Intelligence Community Campus- Bethesda (ICC-B)

MNCPPC

Presentation

June 20, 2013



®

US Army Corps of Engineers
BUILDING STRONG®



NCPC Informational Agenda

ICC-B Project

Opening Remarks

Bobby Bourgeois, DIA

Community Engagement

Bobby Bourgeois, DIA

ICC-B Development Process

Jack Connolly, USACE

Updated Architectural Vision

Dana Pomeroy, WT Team

Stormwater Management Update

Jack Connolly, USACE



ICC-B Commitment Letters Progress

- These letters are the cornerstones of ICC-B community outreach and engagement approach
- Program has made progress on all commitments: some nearly complete (e.g., garage footprint, lighting and noise, solar array design); significant headway on others (e.g., NPS coordination, erosion restoration plan, and general storm water management approach)

January 2012 Letter

Key Area	Approach Highlights
Garage/ Parking	Reduced garage footprint and capacity, reoriented position on site, three levels below grade
Forest Conservation	Minimize disturbance to forest (north campus), preserve specimen trees, convert impermeable lots to landscaping
Traffic	Provide shuttle, promote use of public transportation and bicycling, Joint Traffic Committee participation, safety monitors for equipment transit
Stormwater Management	Work with community SWM stakeholders, provide permitting docs for review, assess and address historical issues
Lighting and Noise	Parking garage design is compliant for lighting/leakage, no helipad, endeavor to reduce noise from campus
Other	Regular coordination with neighborhood leadership

July 2012 Letter

Commitment	Approach Highlights
Support NPS North Channel	Provide design data to NPS to prevent/restore erosion, coordinate with BRAC
Provide MDE Permit Set for Review	Hosted on-site reviews of MDE permit documentation, chartered a monthly stormwater meeting with community members
Explore North Channel Outfall Relocation	SWM mitigating steps were designed to limit future issues; further restoration to occur at conclusion of North Campus
Phase 2 Site Designs	Initial site concept featured sustainable approaches, near-term task to develop campus-wide SWM plan
Erosion Restoration	Outfall Channel Study complete, coordinated with stakeholders; Memorandum of Intent with NPS to provide specific requirements
Garage Solar Array Design	Lowered photo voltaic panel elevation and centered on the top parking surface

Summary of Public Engagement

Community Meetings

- October 5, 2011
- November 29, 2011
- January 12, 2012
- February 7, 2013

Community Leaders Meetings

- June 21, 2012 SWM in advance of July NCPC presentation
- August 17, 2012 South Campus architecture, landscaping, SWM and trees prior to award
- November 8, 2012 South Campus architecture, landscaping, SWM and trees post award
- April 18, 2013 Overview of May NCPC presentation
- April 29, 2013 SWM in advance of May NCPC presentation

Traffic Committee Meetings

- September 24, 2012
- October 22, 2012
- November 27, 2012
- January 28, 2013
- June 24, 2013

Community Stormwater Document Reviews

- January 7, 2013
- February 14, 2013
- March 14, 2013
- April 11, 2013
- May 9, 2013
- June 13, 2013

In addition to these meetings, USACE emails a newsletter with regular updates on significant construction activities, and posts project information to Baltimore District website



ICC-B/NPS Coordination Chronology

Memorandum of Intent (MOI) development milestones:

- July 10, 2012 – Initial contact with NPS, provided background data on site redevelopment
- September 14 – Initial DIA meeting with NPS
- January 29, 2013 – Provided North Campus MDE permit data to NPS
- February 8 – Draft Outfall Channel Study delivered to NPS, BRAC, NGA
- February 22 – Teleconference to discuss Draft Outfall Channel Study
- March 21 – Meeting to discuss Draft Outfall Channel Study
- April 9 – Sent initial Draft MOI to NPS
- April 15 – Final Outfall Channel Study delivered to NPS
- June 3 – Meeting to discuss draft MOI
- June 5 – Final Draft of MOI provided to NPS for review and coordination

ICC-B Development Process

Contracts: One for each “campus”

- North Campus - Clark Construction (construction underway)
- South Campus - Single Award Task Order Construction Contract, Whiting Turner Contracting
 - Benefits:
 1. Single General Contractor for remainder of work
 2. Same Architect-Engineer for remainder of work
 3. Continuity of Architectural “Vision”
 - Submission #1 – Centrum Building
 - Submission #2 – Roberdeau / Erskine Facades
 - Submission #3 – Site Work



Updated Architectural Vision for ICC-B – South Campus

Collaboration Vision



DEPARTMENT OF THE AIR FORCE



DEPARTMENT OF THE ARMY



CENTRAL INTELLIGENCE AGENCY



UNITED STATES COAST GUARD



DEFENSE INTELLIGENCE AGENCY



DEPARTMENT OF ENERGY



U.S. DEPARTMENT OF HOMELAND SECURITY



DEPARTMENT OF STATE



THE DEPARTMENT OF THE TREASURY



U.S. JUSTICE DEPARTMENT, DRUG ENFORCEMENT ADMINISTRATION



DEPARTMENT OF JUSTICE, FEDERAL BUREAU OF INVESTIGATION



DEPARTMENT OF THE NAVY, UNITED STATES MARINE CORPS



NATIONAL GEOSPATIAL INTELLIGENCE AGENCY



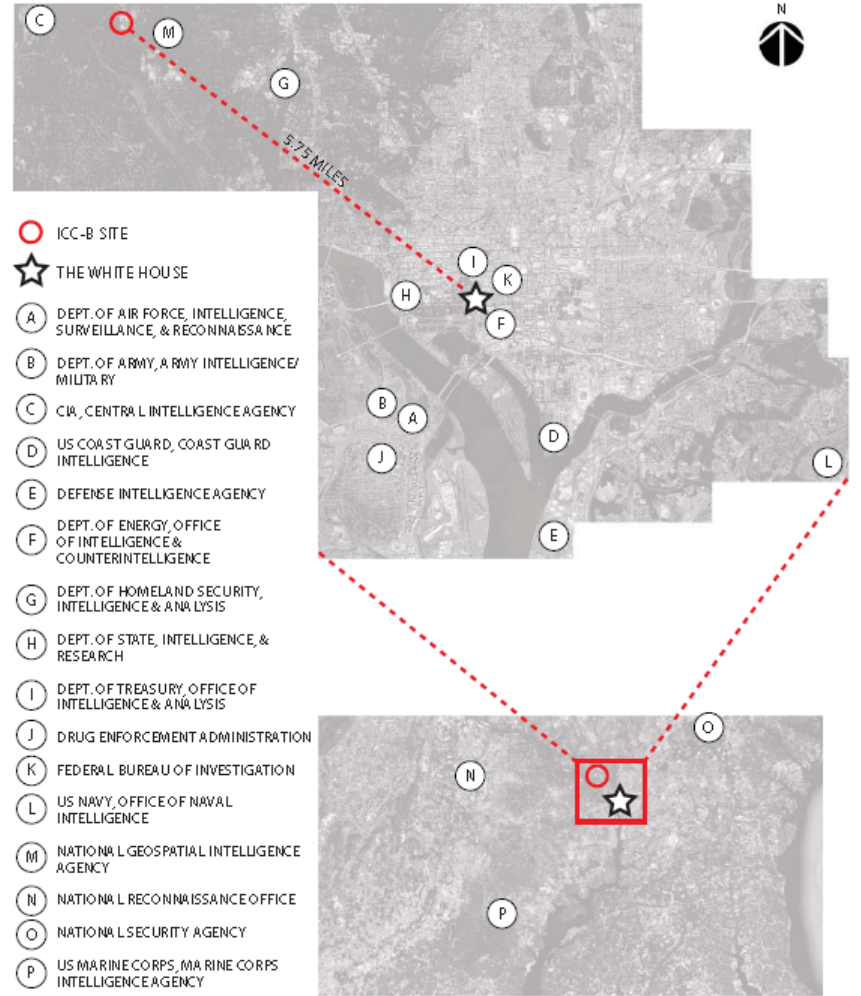
NATIONAL RECONNAISSANCE OFFICE



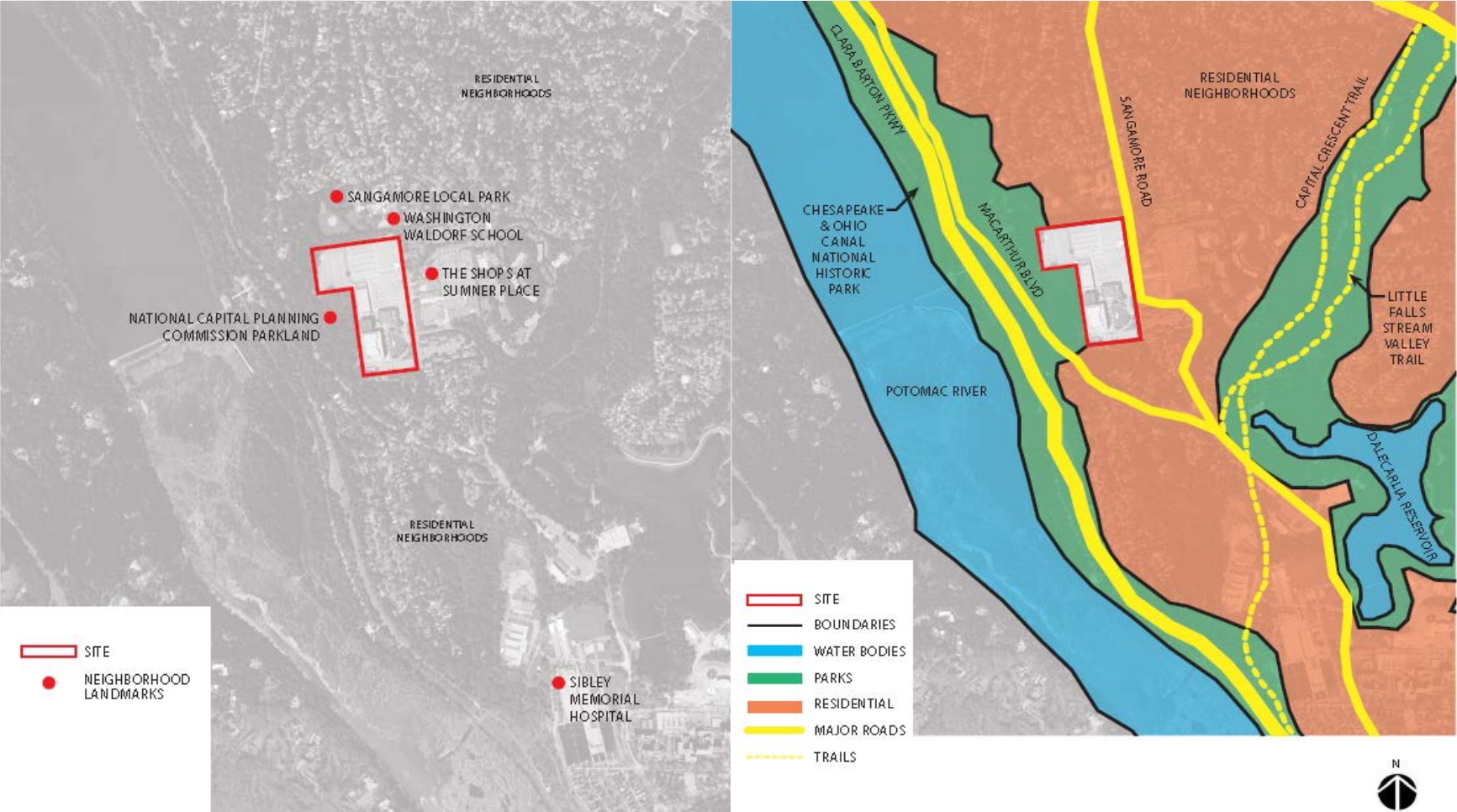
NATIONAL SECURITY AGENCY



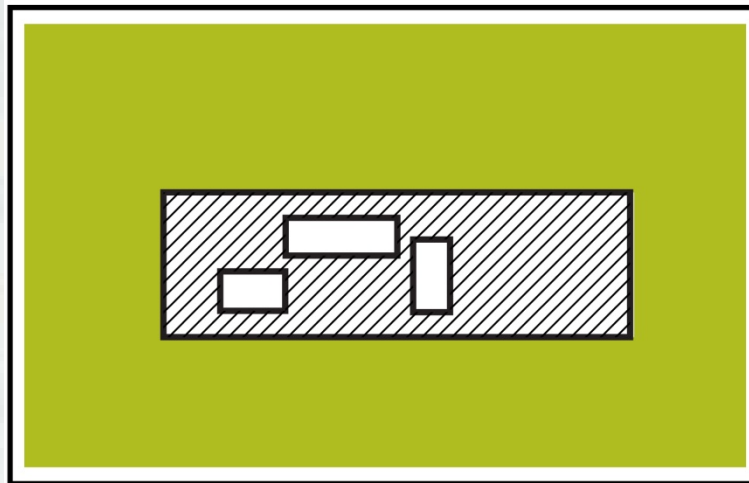
DEPARTMENT OF THE NAVY



Fabric of the Community

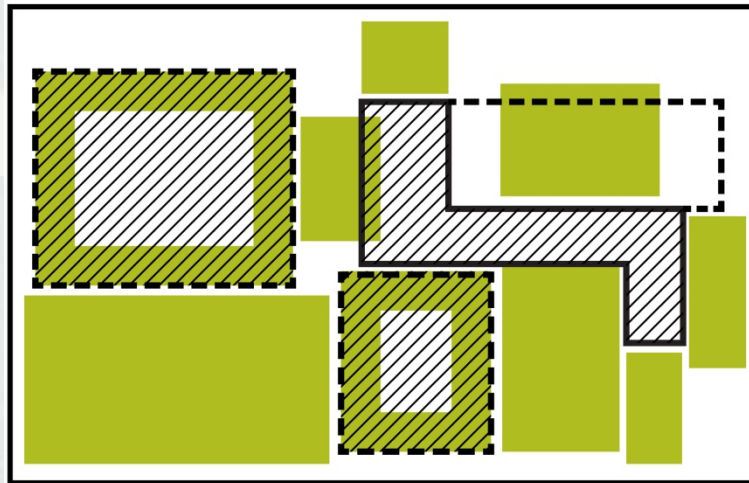


Building as Field



BUILDING AS **OBJECT**

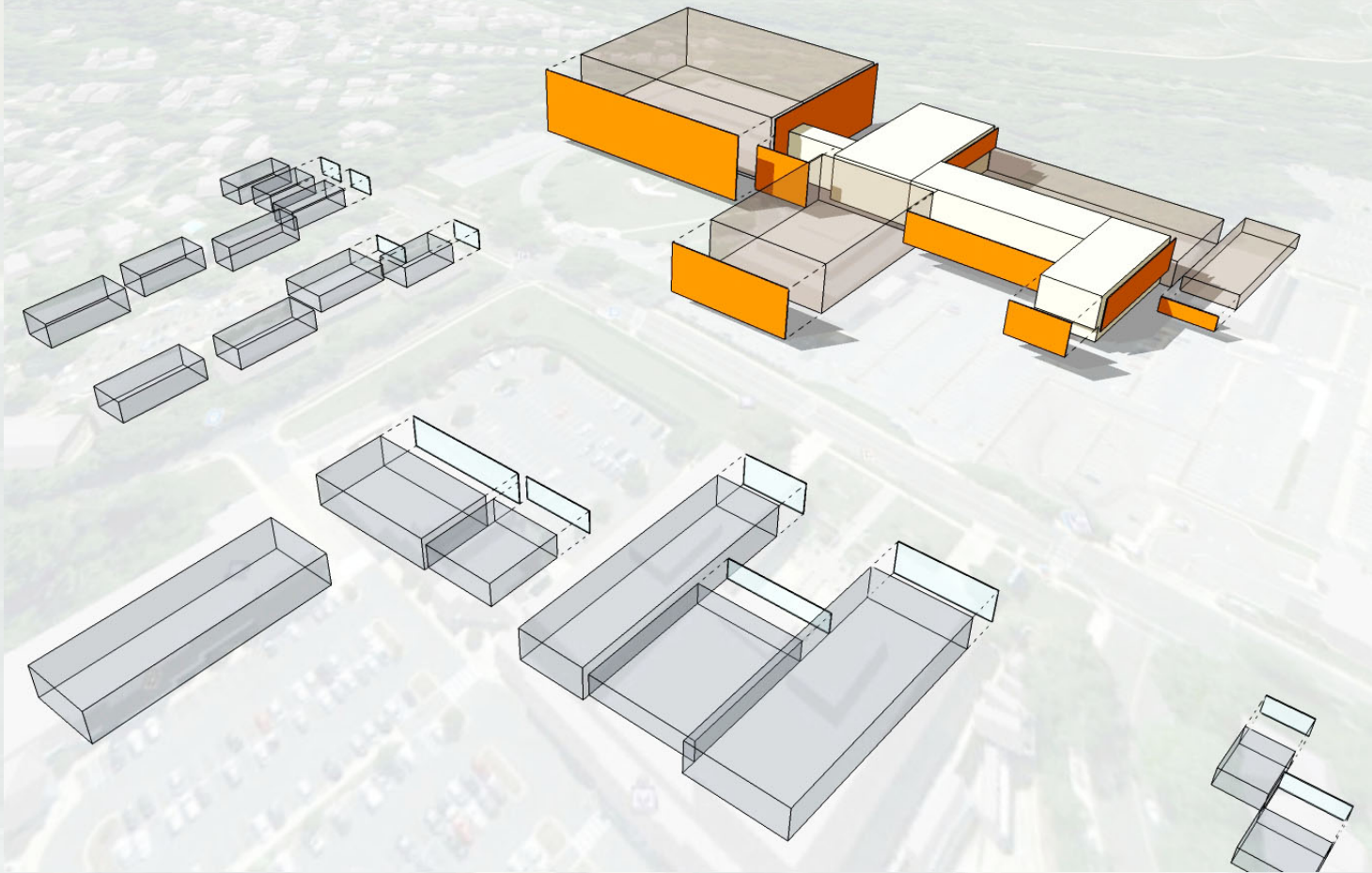
LOOK OUT, LOOK AT



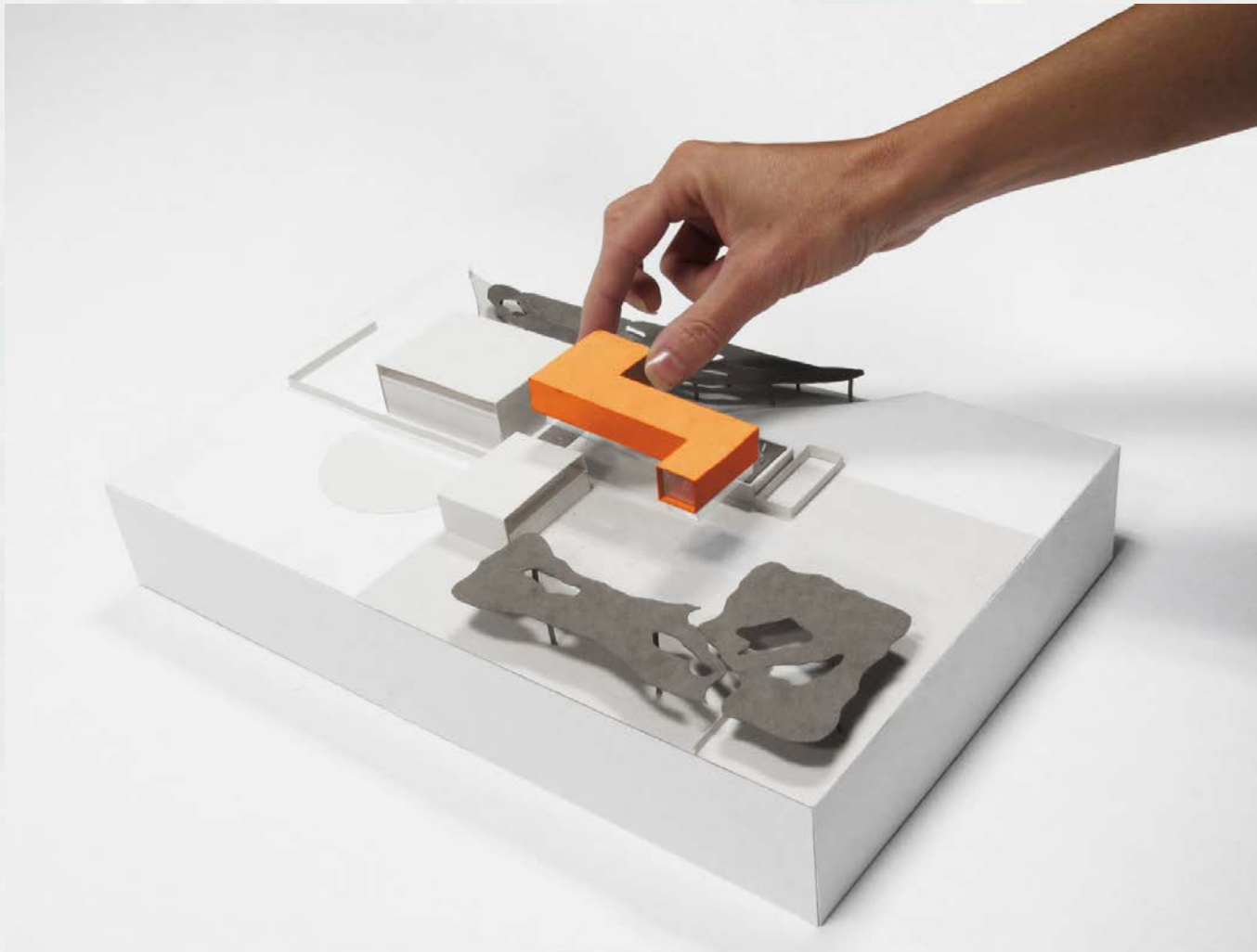
BUILDING AS **FIELD**

CONTINUOUS FIELD OF
HABITABLE SPACE

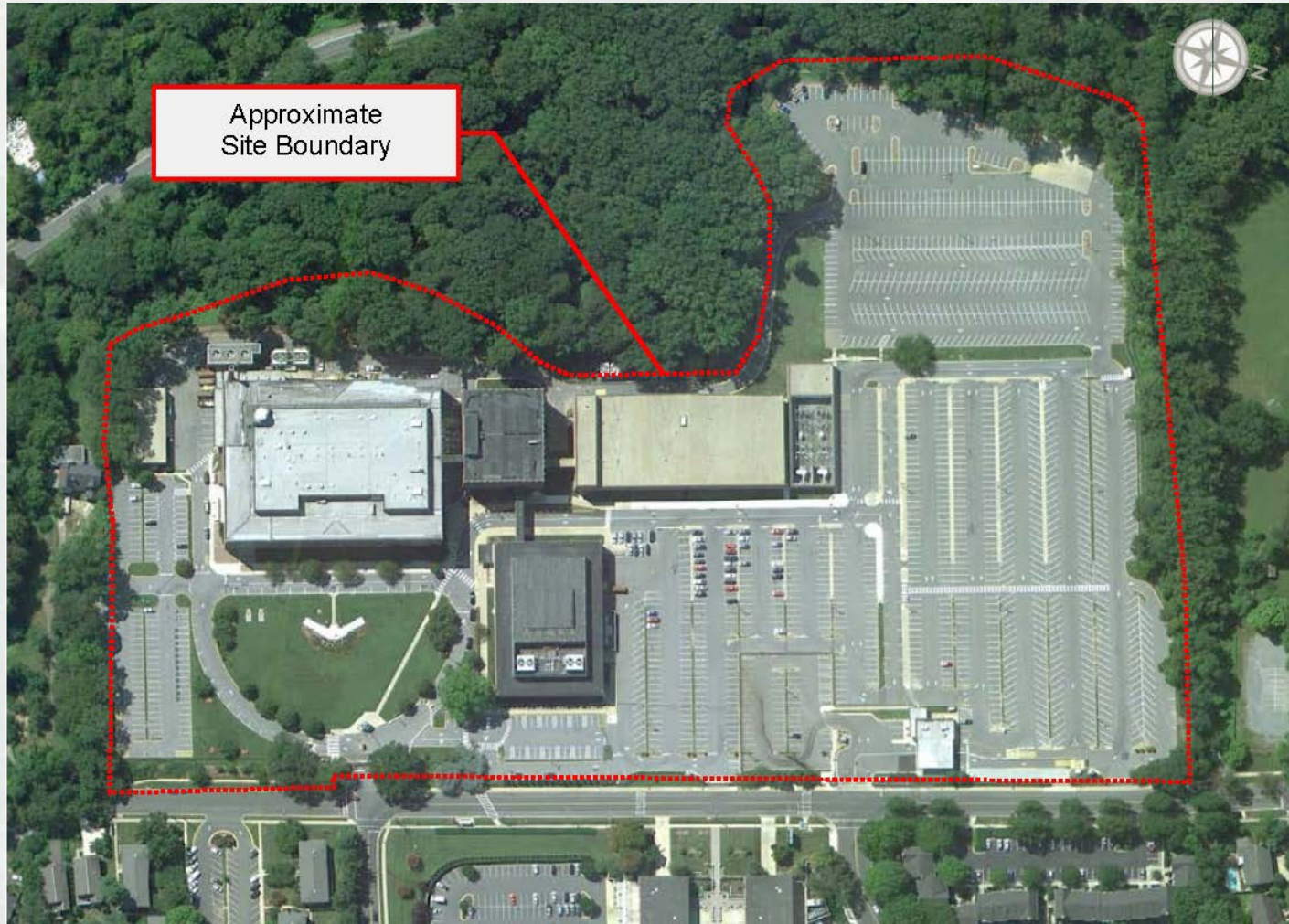
Mass Analysis Diagram



Conceptual Form Diagram



Existing Campus



Approximate
Site Boundary

Revitalized Campus



Comprehensive Vision



Architectural/Landscape Vision



Building Skin/ Facade

Landscape to Building



Sangamore Road Master Plan Aerial View



East Lawn Master Plan View



North Entry Master Plan View



Ceremonial Entry Master Plan View



Assembly Courtyard Master Plan View



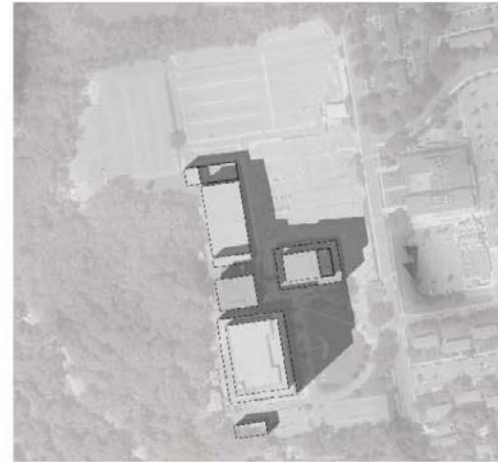
Assembly Courtyard Master Plan View



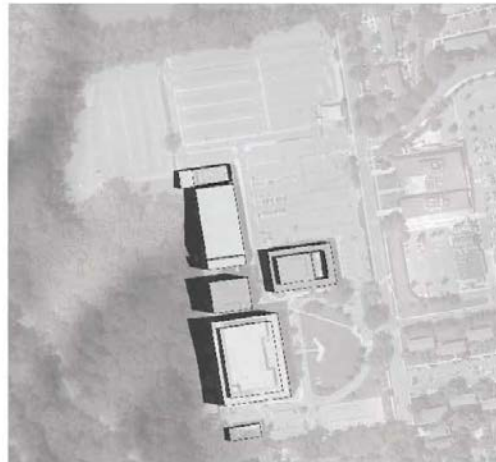
Seasonal Sun Path Diagram



DECEMBER: 9:00 AM



DECEMBER: 3:00 PM



JUNE: 9:00 AM



JUNE: 3:00 PM

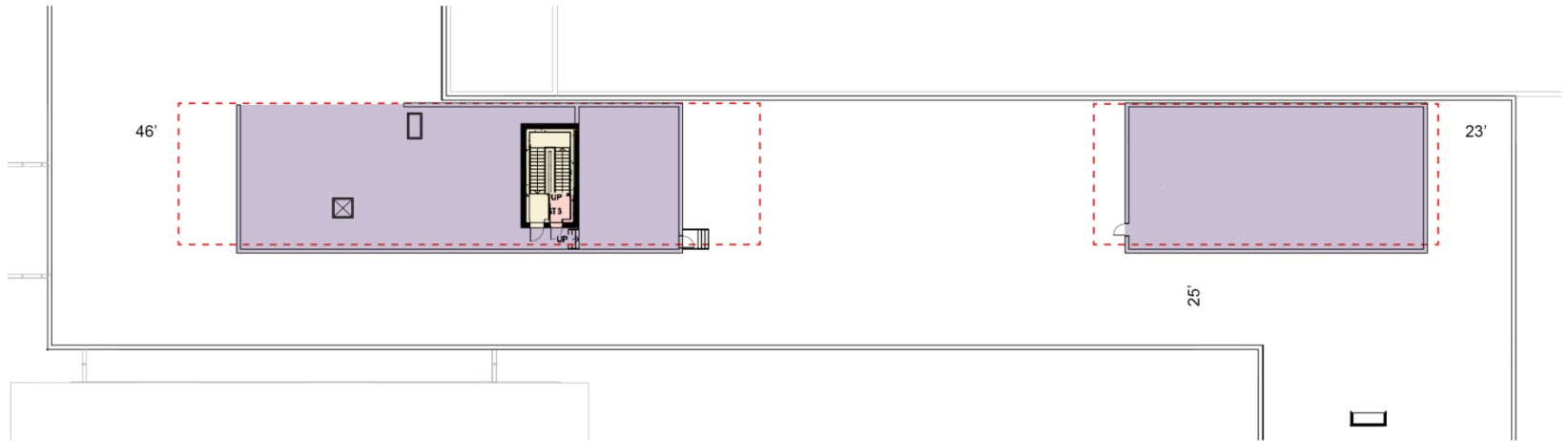
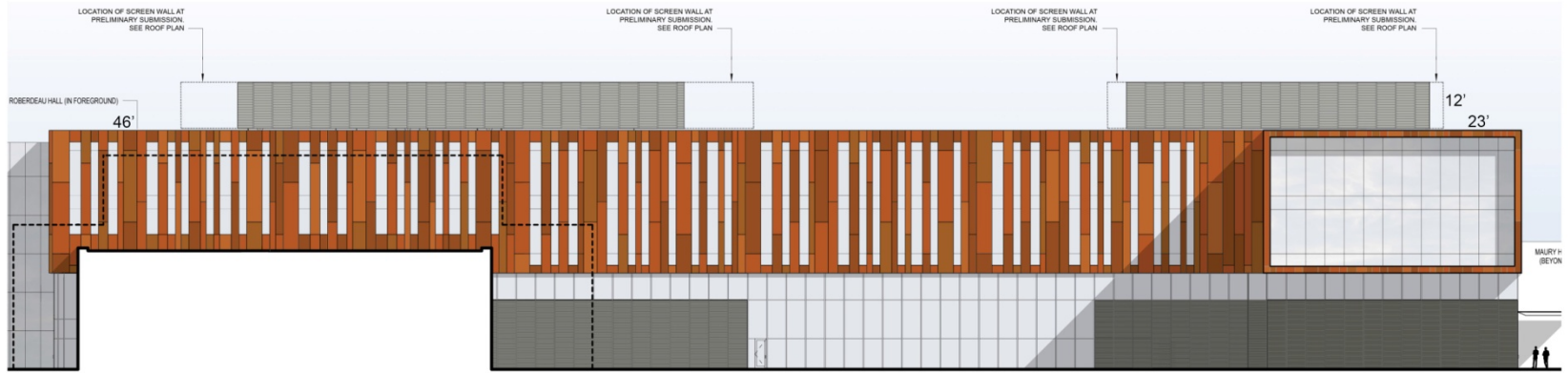
Centrum – Initial Task Order



Centrum – Initial Task Order



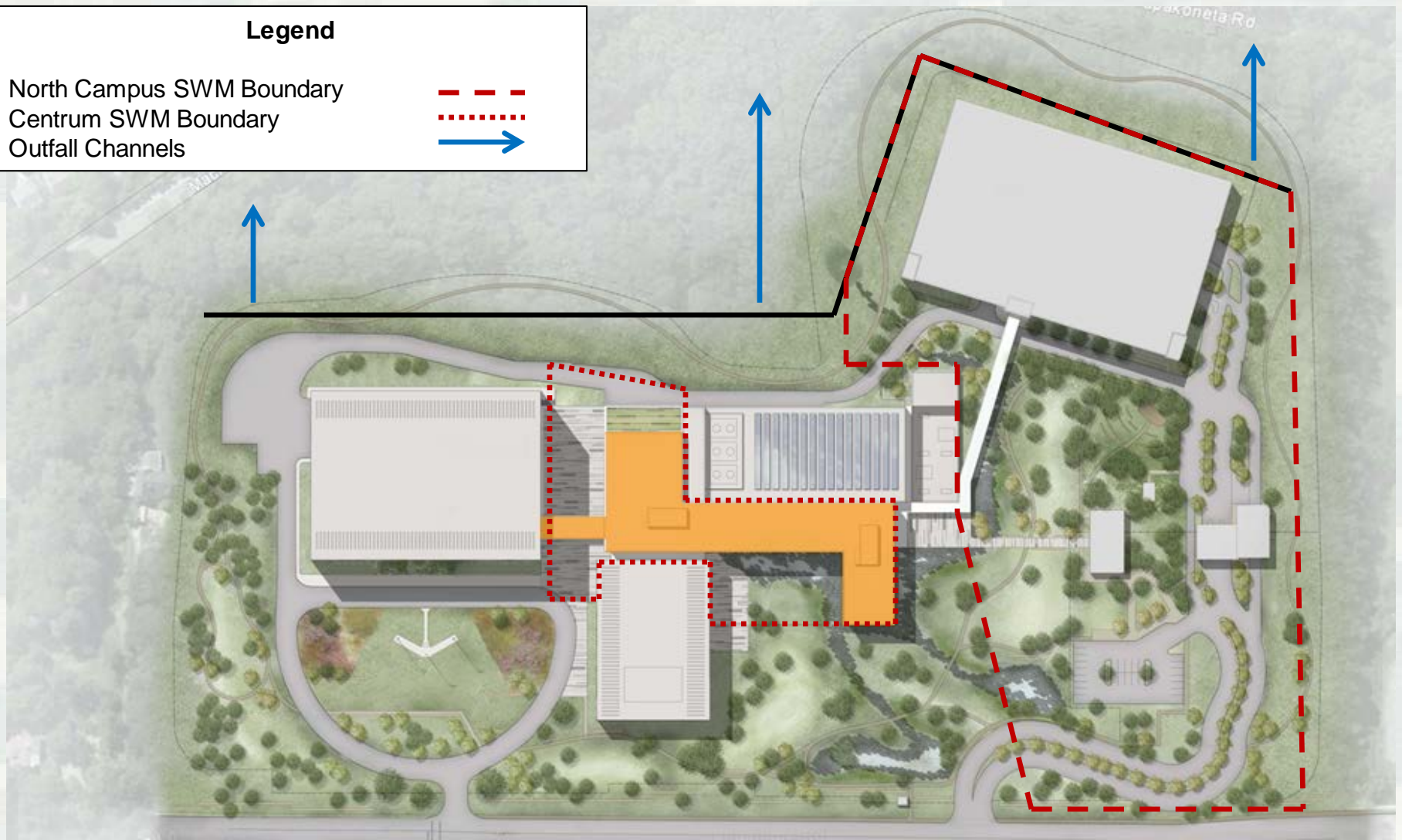
Centrum Penthouse Setbacks



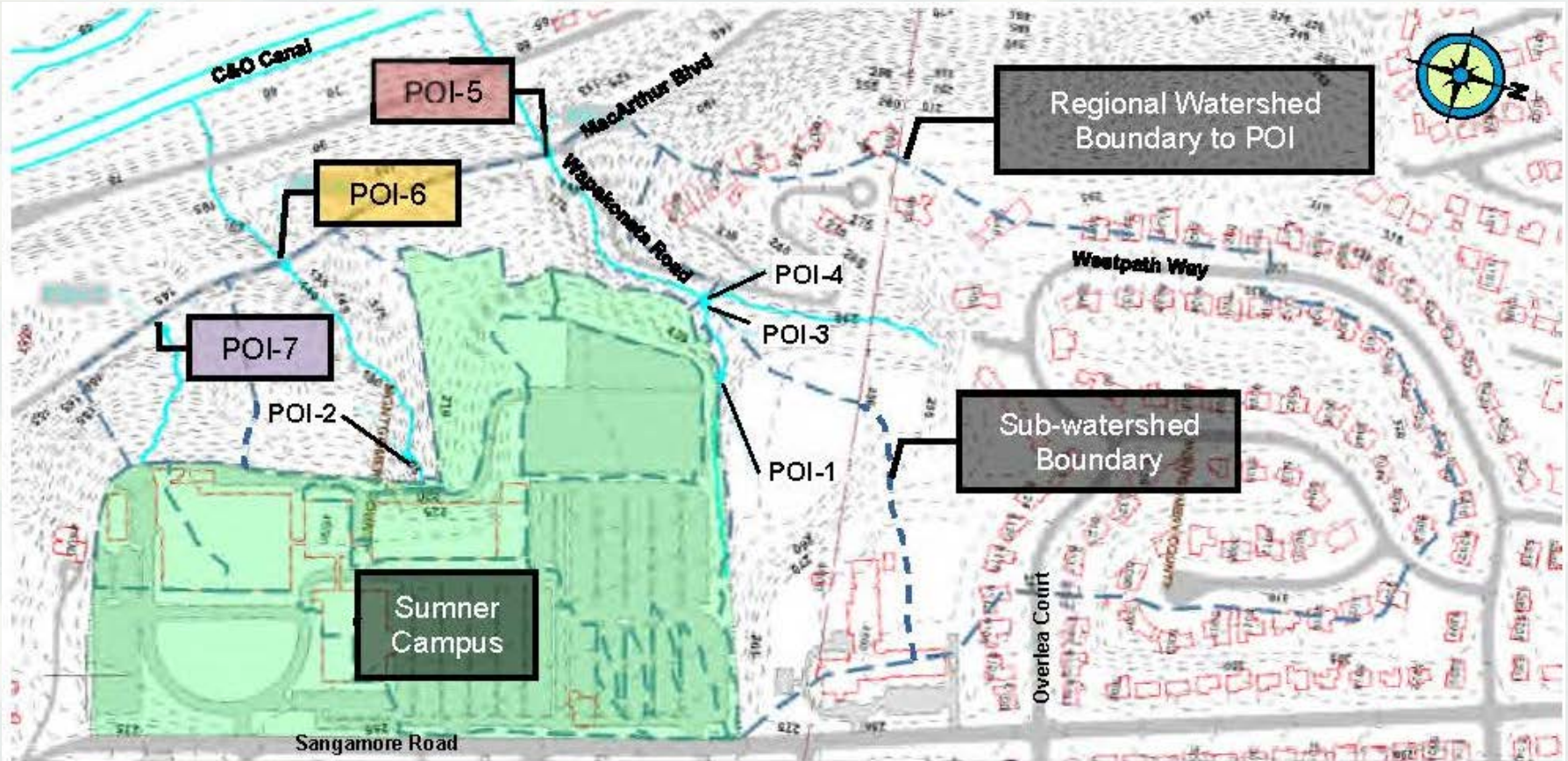
Stormwater Management

Legend

North Campus SWM Boundary
Centrum SWM Boundary
Outfall Channels



Offsite Outfalls



Current storm water related efforts at ICC-B

North Campus -

- MDE has permitted the Storm water design
- SWM system is under construction

South Campus -

- MDE has reviewed and accepted the Centrum Storm water Concept design
- Sediment Erosion control design will be submitted in the next few weeks
- Centrum Specific Storm water design will follow the Sediment/Erosion plan

Overall Campus -

- Design team has developed a site-wide SWM strategy to be used as framework for each phase of the SATOCC process
- Strategy expands on the original 2010 concept design for the project
- This strategic design will allow the project to proceed in a phased manner as planned, but keep each construction activity compliant with the master plan.

Off Campus -

- Offsite Channel Study completed to address MDE conditions and at request of BRAC
- Study analyzed drainage areas into local channels, and estimates impacts of channel erosion by the campus
- Final report was provided to MDE, comments received May 16
- Report also shared with community stakeholders and National Park Service

Questions?



<http://www.nab.usace.army.mil/Missions/MilitaryPrograms/ICCB.aspx>

