

LEFT GEOMETRY	CENTRALING GEOMETRY	RIGHT GEOMETRY
1398422.50 402993.80	82000.00 1398423.50 402915.30	1398423.50 402993.80
1398422.50 402993.80	82000.00 1398423.50 402915.30	1398423.50 402993.80
1398422.50 402993.80	82000.00 1398423.50 402915.30	1398423.50 402993.80
1398422.50 402993.80	82000.00 1398423.50 402915.30	1398423.50 402993.80
1398422.50 402993.80	82000.00 1398423.50 402915.30	1398423.50 402993.80

TIDAL BENCH MARK

FORM NO. 1253
 COAST AND GEODETIC SURVEYING DISTRICT 1
 WASHINGTON, D.C. 20375
 U.S. NAVY
 NAVY DISTRICT OF BALTIMORE
 BALTIMORE, MARYLAND
 BENCH MARK ELEVATION EQUALS 2.96' ABOVE MLLW FOR '83-'01 TIDAL EPOCH.
 VERTICAL DATUM

MLLW
 07.28
 14.51
 10.30

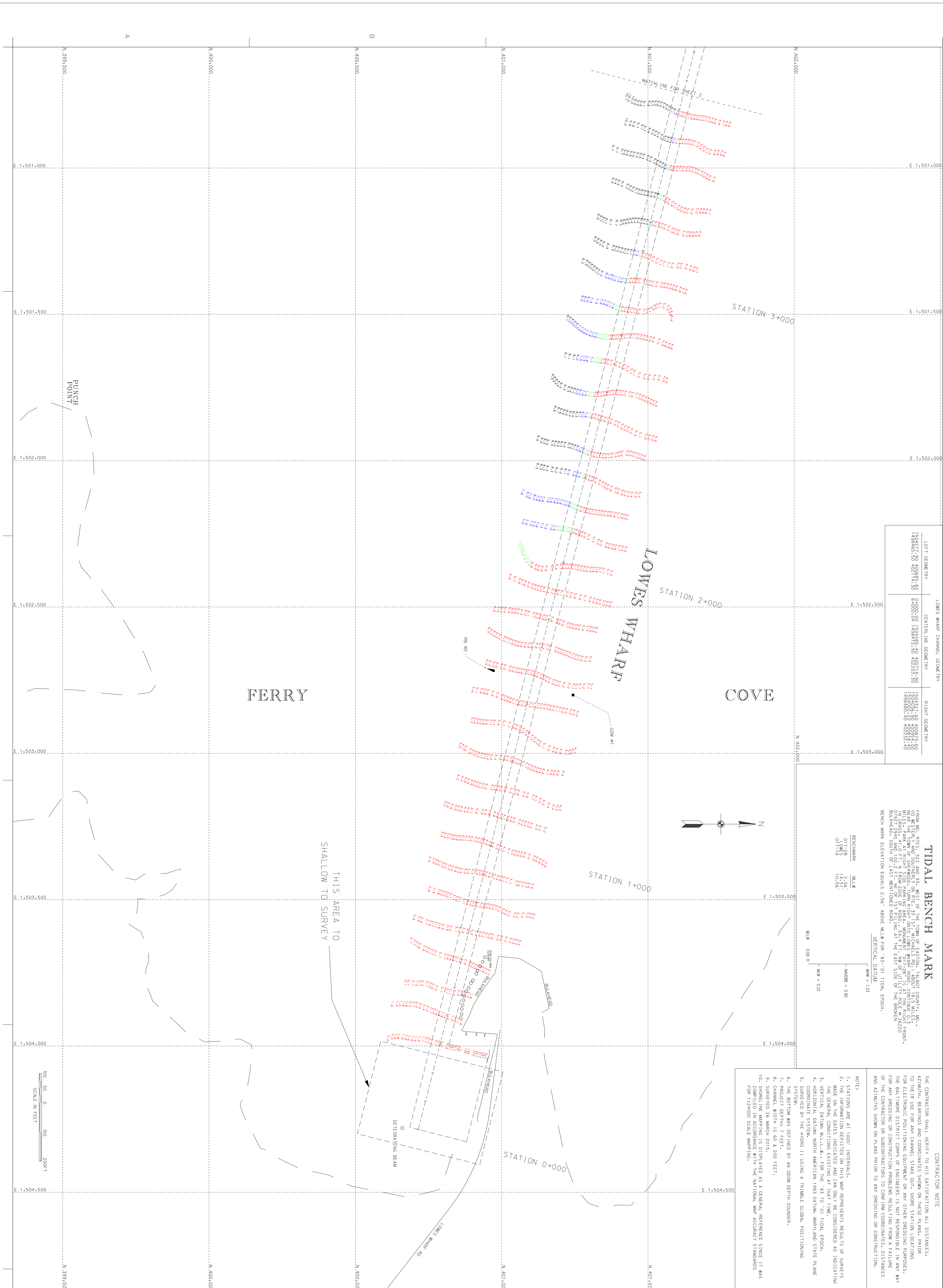
WMOB = 010
 WM = 022
 VALUE 0.00 ft

CONTRACTOR NOTE

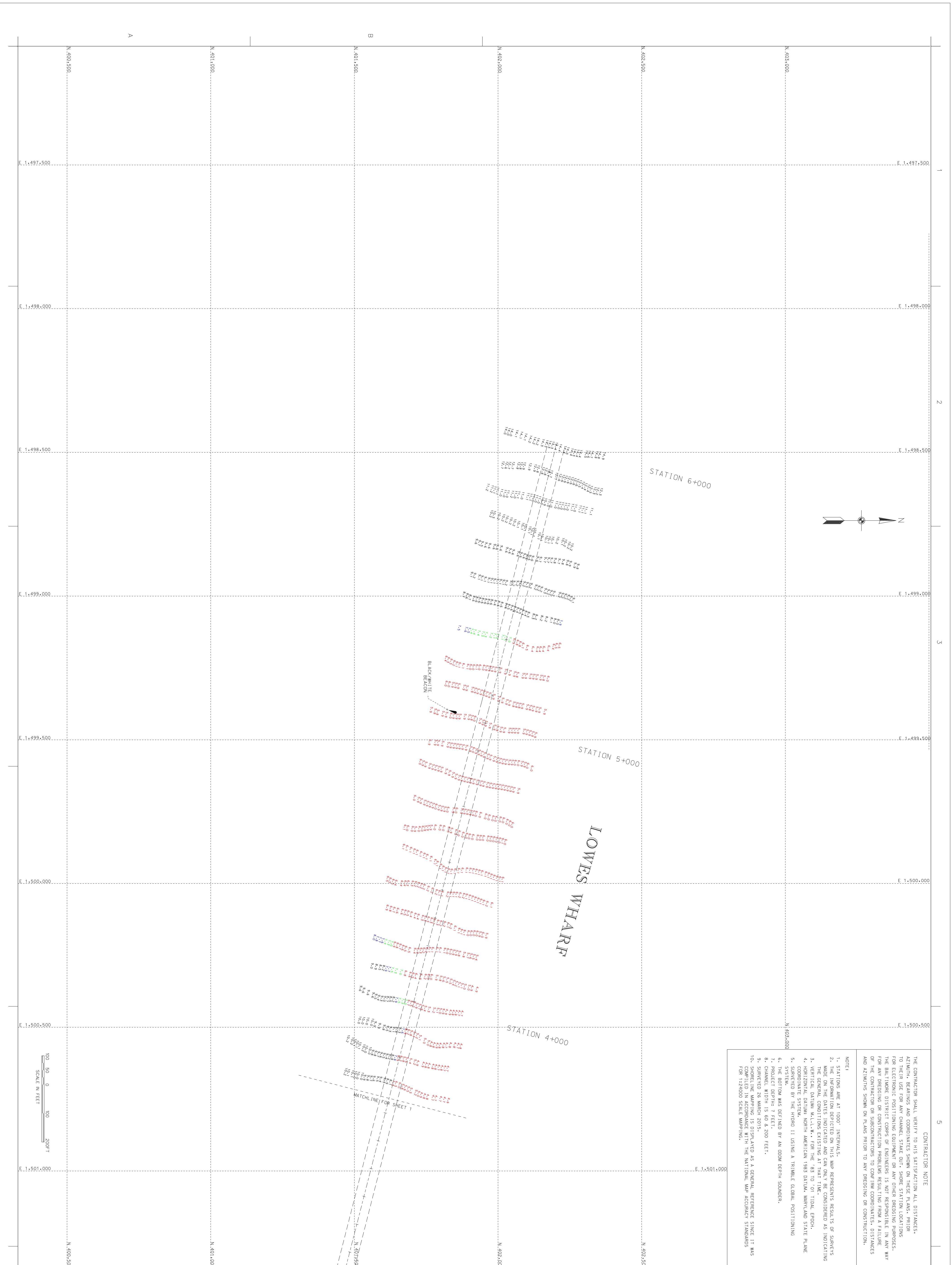
THE CONTRACTOR SHALL VERIFY TO HIS SATISFACTION ALL DISTANCES, AZIMUTHS, BEARINGS AND COORDINATES SHOWN ON THESE PLANS PRIOR TO THEIR USE FOR ANY CHANNEL STAKE OUT. SHORE STATION LOCATIONS FOR ELECTRONIC POSITIONING EQUIPMENT OR ANY OTHER DREDGING PURPOSES FOR THE BALTIMORE DISTRICT CORPS OF ENGINEERS IS NOT RESPONSIBLE IN ANY WAY FOR ANY DREDGING OR CONSTRUCTION PROBLEMS RESULTING FROM A FAILURE OF THE CONTRACTOR OR SUBCONTRACTORS TO CONFIRM COORDINATES, DISTANCES AND AZIMUTHS SHOWN ON PLANS PRIOR TO ANY DREDGING OR CONSTRUCTION.

NOTES:

1. STATIONS ARE AT 1000' INTERVALS.
2. THE INFORMATION DEPICTED ON THIS MAP REPRESENTS RESULTS OF SURVEYS MADE ON THE DATES INDICATED AND CAN ONLY BE CONSIDERED AS INDICATING.
3. VERTICAL DATUM: MLLW FOR THE '83 TO '01 TIDAL EPOCH.
4. HORIZONTAL DATUM: NORTH AMERICAN 1983 DATUM, MARYLAND STATE PLANE COORDINATE SYSTEM.
5. SURVEYED BY THE HOBNO 11 USING A TRIMBLE GLOBAL POSITIONING SYSTEM.
6. THE BOTTOM WAS DEFINED BY AN ECHOSOUNDING SONAR.
7. PROJECT DEPTH: 7 FEET.
8. CHANNEL WIDTH IS 60 & 200 FEET.
9. SURVEYED 26 MARCH 2015.
10. SHORELINE MAPPING IS OBTAINED AS A GENERAL REFERENCE SINCE IT WAS FOR 1:25000 SCALE MAPPING.



Sheet reference number V-101 Sheet 1 of 2	TALBOT COUNTY MARYLAND CONDITION SURVEY LOWES WHARR STATION 0+000 TO 3+600	U.S. ARMY CORPS OF ENGINEERS BALTIMORE DISTRICT	Designed by:	Date: APRIL 15	Rev.
			Drawn by: JML Reviewed by: SMC Submitted by:	Design file no.: FLE 33 MAP-15-001 Drawing code: (www.usace.army.mil) MAP 2000 Plot scale:	Date Appr. Mark

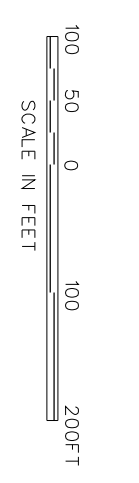


CONTRACTOR NOTE

THE CONTRACTOR SHALL VERIFY TO HIS SATISFACTION ALL DISTANCES, AZIMUTHS, BEARINGS AND COORDINATES SHOWN ON THESE PLANS PRIOR TO THEIR USE FOR ANY CHANNEL STAKE OUT. SHORE STATION LOCATIONS FOR ELECTRONIC POSITIONING EQUIPMENT OR ANY OTHER DREDGING PURPOSES, THE BALTIMORE DISTRICT CORPS OF ENGINEERS IS NOT RESPONSIBLE IN ANY WAY FOR ANY DREDGING OR CONSTRUCTION PROBLEMS RESULTING FROM A FAILURE OF THE CONTRACTOR OR SUBCONTRACTORS TO CONFIRM COORDINATES, DISTANCES AND AZIMUTHS SHOWN ON PLANS PRIOR TO ANY DREDGING OR CONSTRUCTION.

NOTE:

1. STATIONS ARE AT 1000' INTERVALS.
2. THE INFORMATION DEPICTED ON THIS MAP REPRESENTS RESULTS OF SURVEYS MADE ON THE DATES INDICATED AND CAN ONLY BE CONSIDERED AS INDICATING THE LOCATION OF THE WHARF AT THE TIME OF SURVEY.
3. VERTICAL DATUM: M.L.L.W. FOR THE '83 TO '01 TIDAL EPOCH.
4. HORIZONTAL DATUM: NORTH AMERICAN 1983 DATUM, MARYLAND STATE PLANE COORDINATE SYSTEM.
5. SURVEYED BY THE HONOR II USING A TRIMBLE GLOBAL POSITIONING SYSTEM.
6. THE BOTTOM WAS DEFINED BY AN ECHOSOUNDING SONAR.
7. PROJECT DEPTH: 7 FEET.
8. CHANNEL WIDTH IS 60 X 200 FEET.
9. SURVEYED 26 MARCH 2015.
10. SHORRELINE MAPPING IS OBTAINED AS A GENERAL REFERENCE SINCE IT WAS FOR 1:25000 SCALE MAPPING.



Sheet reference number
V-102
Sheet 2 of 2

TALBOT COUNTY
MARYLAND

CONDITION SURVEY
LOWES WHARF
STATION 3+700 TO 7+000

U.S. ARMY CORPS OF ENGINEERS
BALTIMORE DISTRICT

Designed by:	Date:	Rev.:
Drawn by:	APRIL 15	
Checked by:		
Reviewed by:	Design file no.:	
	SMS	FLE 33 MAP-15-002
Submitted by:	Drawing code:	
Chief, Arch. Branch	Plot scale:	

Mark	Description	Date	Appr.	Mark	Description	Date	Appr.

