

Seven Points Overflow Parking

Your party needs to agree to rendezvous at either:
The bottom of the Twin Hollows Parking Lot, OR
The beach courtesy dock

Vehicle Operator

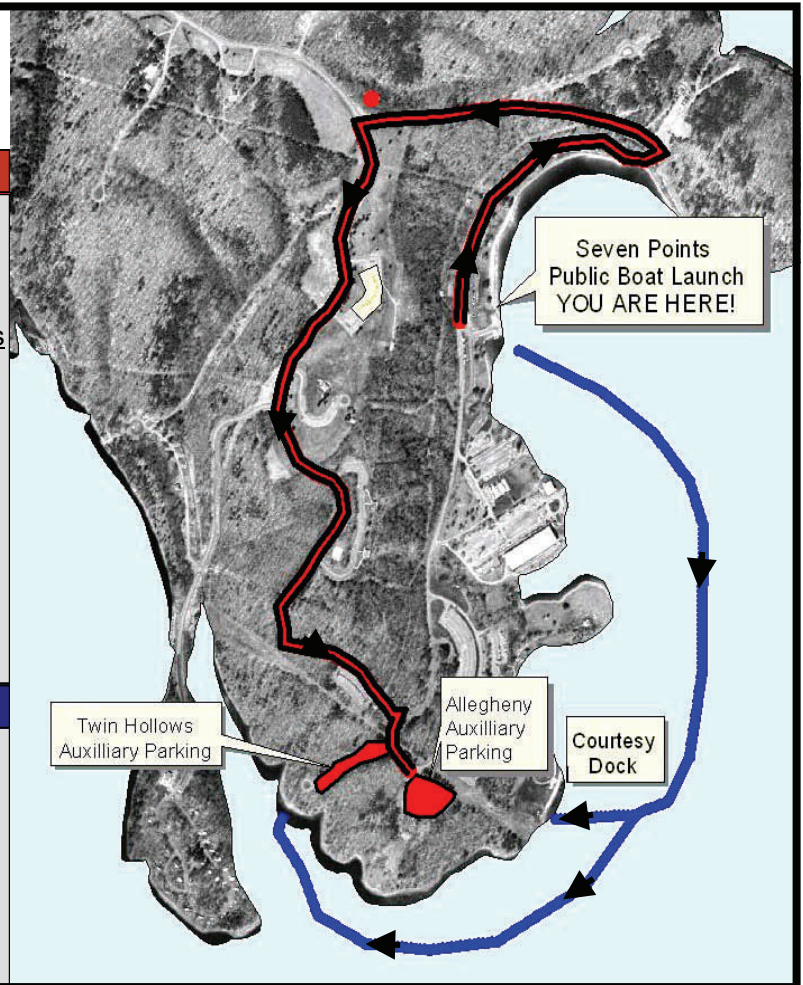
1. Exit the boat launch parking lot, turn right and follow the road to the top of the hill (0.8 miles).
2. Turn left at the stop sign, continuing on the same road you entered the park on (1 mile).
3. Turn right at the overflow parking sign towards Twin Hollows or Allegheny. Do not park in Mushroom or Laurel.

- Do not park across multiple single-car spaces
- Do not park vehicles on the grass
- Do not park in the beach parking lot
- Trailers may back over parking bumpers into the grass as long as they occupy one space, the vehicle remains in the gravel, and out of traffic.

Persons who park illegally are subject to enforcement.

Boat Operators

1. Drive south (right from launch) past the marina into the main channel.
2. Continue past the Seven Points beach and turn right towards the courtesy docks.
- OR -
3. Continue past the Seven Points beach and turn right into the first cove. Twin Hollows is marked by picnic tables on the right.



Seven Points Overflow Parking

Your party needs to agree to rendezvous at either:
The bottom of the Twin Hollows Parking Lot, OR
The beach courtesy dock

Vehicle Operator

1. Exit the boat launch parking lot, turn right and follow the road to the top of the hill (0.8 miles).
2. Turn left at the stop sign, continuing on the same road you entered the park on (1 mile).
3. Turn right at the overflow parking sign towards Twin Hollows or Allegheny. Do not park in Mushroom or Laurel.

- Do not park across multiple single-car spaces
- Do not park vehicles on the grass
- Do not park in the beach parking lot
- Trailers may back over parking bumpers into the grass as long as they occupy one space, the vehicle remains in the gravel, and out of traffic.

Persons who park illegally are subject to enforcement.

Boat Operators

1. Drive south (right from launch) past the marina into the main channel.
2. Continue past the Seven Points beach and turn right towards the courtesy docks.
- OR -
3. Continue past the Seven Points beach and turn right into the first cove. Twin Hollows is marked by picnic tables on the right.

