



Chesapeake Bay Shoreline Maryland Coastal Management, MD

U.S. ARMY CORPS OF ENGINEERS
FACT SHEET as of February 1, 2015

BUILDING STRONG®

AUTHORIZATION: Resolution of Senate Committee on Public Works, 1961; Resolution of House Committee on Public Works, 1962; Resolution of the U.S. Senate Committee on Environment and Public Works, June 28, 1983; Senate Committee on Environment and Public Works Resolution dated May 23, 2001.

TYPE OF PROJECT: Ecosystem Restoration

CONTRIBUTION TO CHESAPEAKE BAY: Directly contributes to achieving protection and restoration goals established by the 2009 Executive Order 13508 and 2014 Chesapeake Bay Program Agreement goals to restore clean water, recover habitat, sustain fish and wildlife and conserve land and public access.

PROJECT PHASE: Feasibility

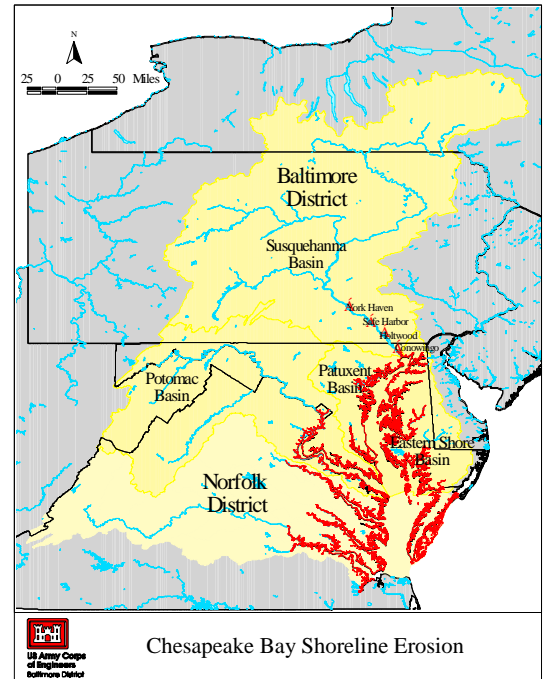
CONGRESSIONAL INTEREST: Senators **Mikulski** and **Cardin** (MD), Casey and Toomey (PA), Warner and Kaine (VA); Representatives Harris (MD-01), Ruppersberger (MD-02), and Hoyer (MD-05).

NON-FEDERAL SPONSOR: State of Maryland Department of Natural Resources (MD DNR)

BACKGROUND: The Maryland Chesapeake Bay coastal zone area is the focus of the study.

The Chesapeake Bay watershed and tidal tributaries is an estuary of national significance and is the single largest estuary in the United States. The Chesapeake Bay's ecosystem is an intricate and delicate connection of terrestrial and aquatic habitats. This "coast-shed" effort addresses recent Chesapeake Bay Agreement commitments and Executive Order 13508, which mandates the integration of living resource protection and restoration, vital habitat protection and restoration, water quality protection and restoration, sound land use, and stewardship and community engagement. The USACE commitment to E.O. 13508 is outlined in the Federal Action Strategy in which the efforts described in this document are a key component and in direct support of the integrated work of the Chesapeake Bay partners to meet their commitments.

A feasibility cost-sharing agreement (FCSA) was signed with MD DNR on September 29, 2004. This study has been scoped as a multi-phased effort. Phase I of the study has been completed and resulted in a Chesapeake Bay Shoreline Management Guide that identifies vulnerable and hot spot locations and management opportunities throughout the Maryland Chesapeake Bay coastal zone, a Technical Guide to assist local planners and professionals that are responsible for shoreline protection, as well as other study products including the Erosion Vulnerability Assessment Tool. The final phase will be completion of the feasibility study report.



U.S. ARMY CORPS OF ENGINEERS – BALTIMORE DISTRICT
P.O. Box 1715, Baltimore, MD 21203

<http://www.nab.usace.army.mil>

Page 1 of 3

STATUS: Phase I, which included the Chesapeake Bay Shoreline Management Plan and Technical Guide, was completed in November 2013. Due to the time sensitivity of completing the Phase II modeling work and lack of available funds, this work will be completed outside the scope of this project. Planning and execution of the final phase of the project, the feasibility study report, will commence upon receipt of federal funds.

BUDGET (\$):

	<u>Investigations</u>
	<u>FEAS</u>
<u>Total Estimated Cost</u>	\$6,162,000
Federal Cost Estimate	3,081,000
Non-Federal Cost Estimate	3,081,000
<u>Federal Funds Data</u>	
Allocations thru FY 2013 ¹	1,581,000
Allocation for FY 2014	1,000
President Budget FY 2015 ²	0
Allocation for FY 2105 ³	TBD
Balance to Complete	1,499,000

NOTES:

¹ Includes \$60,000 allocation from the American Recovery and Reinvestment Act (ARRA).

² The President typically sends the budget to Congress in February each year. Upon release, budget amounts for the USACE Civil Works programs and specified projects are posted online at the HQUSACE website in a program budget press book at <http://www.usace.army.mil/Missions/CivilWorks/Budget.aspx>.

³ The final FY 2015 allocation amounts will be made available upon final approval pursuant to the Energy and Water Appropriations Act's continuing funding requirements.

SCHEDULE:

FY 2014 Completed Work: With funding received, minimal project activities occurred. Coordination with the non-Federal sponsor continued for planning the final phase of the project, the feasibility study report.

FY 2015 Scheduled Work: Previous year carry-in funds in the amount of \$35,500 to be used for planning the final phase of the project.

COMPLETION: With optimum funding, the study would be completed in FY 2018.

For more information regarding the Chesapeake Bay Shoreline Maryland Coastal Management, MD Project, please contact Kimberly Gross, Project Manager, CENAB-PP-C, (410) 962-3457, Kimberly.u.gross@usace.army.mil



Chesapeake Bay Shoreline Erosion

U.S. ARMY CORPS OF ENGINEERS – BALTIMORE DISTRICT

P.O. Box 1715, Baltimore, MD 21203

<http://www.nab.usace.army.mil>

Page 3 of 3