



Dog Island Shoals, Worcester County, MD

U.S. ARMY CORPS OF ENGINEERS
FACT SHEET as of February 1, 2015

BUILDING STRONG®

AUTHORIZATION: Continuing Authorities Program, Section 206 of the Water Resources Development Act of 1996, as amended

TYPE OF PROJECT: Aquatic Ecosystem Restoration

CONTRIBUTION TO CHESAPEAKE BAY: Directly contributes to achieving protection and restoration goals established by the 2009 Executive Order 13508 and the 2014 Chesapeake Bay Program Agreement by recovering vital habitat and sustaining fish and wildlife.

PROJECT PHASE: Design & Implementation

CONGRESSIONAL INTEREST: Senators **Mikulski** and **Cardin** (MD); Congressman **Harris** (MD-01)

NON-FEDERAL SPONSOR: Maryland Department of Natural Resources, Worcester County, and the Town of Ocean City, Maryland

BACKGROUND: The Dog Island Shoals area is a large expanse of shallow water located at the southern end of Isle of Wight Bay in Worcester County, Maryland.

This project was investigated as part of the Ocean City Water Resources Feasibility Study, which was completed in July 1998. Two of the primary needs identified during the study were the creation of bird habitat and the restoration of salt marsh. Dog Island Shoals was selected as a prime location for both. The recommended plan combines the creation of 3 acres of upland island bird habitat and the creation of a minimum of 3 additional acres of salt marsh habitat within one 6-acre geotextile tube-protected island. Initial project construction would include placing sand-filled geotextile tubes to enclose a 6-acre site located on the Dog Island Shoal. As part of this initial project construction, 3 acres of the island would be filled to provide upland nesting habitat.

The project has been on hold since 2004 due to nationwide funding shortfalls in the Section 206 program. Also, due to lack of funding, the Maryland Department of Natural Resources (MD DNR) is currently unable to cost share the project and to execute a Project Partnership Agreement with the USACE. However, the sponsor is still interested in the project and intends to proceed with the project when budgetary conditions within the State improve.

STATUS: Project is on hold until the non-Federal sponsor obtains sufficient funds to execute a Project Partnership Agreement. The Baltimore District is in contact with the sponsor to determine if there is still interest in pursuing or terminating the project.



U.S. ARMY CORPS OF ENGINEERS – BALTIMORE DISTRICT

P.O. Box 1715, Baltimore, MD 21203

<http://www.nab.usace.army.mil>

Page 1 of 3

BUDGET (\$):

Construction

	<u>Feasibility</u>	<u>Design and Implementation</u>
<u>Total Estimated Cost</u>		\$2,615,000
Federal Cost Estimate	0	1,700,000
Non-Federal Cost Estimate	0	915,000

<u>Federal Funds Data</u>		
Allocations thru FY 2013	\$0	\$201,000
Allocation for FY 2014	\$0	\$0
President Budget FY 2015 ¹	\$0	\$0
Allocation for FY 2015 ²	\$0	\$0
Balance to Complete	\$0	\$1,499,000

NOTES:

¹ The President typically sends the budget to Congress in February each year. Upon release, budget amounts for the USACE Civil Works programs and specified projects are posted online at the HQUSACE website in a Program Budget Press Book at <http://www.usace.army.mil/Missions/CivilWorks/Budget.aspx>.

² The final FY 2015 allocation amounts will be made available upon final approval pursuant to the Energy and Water Appropriations Act's continuing funding requirements .

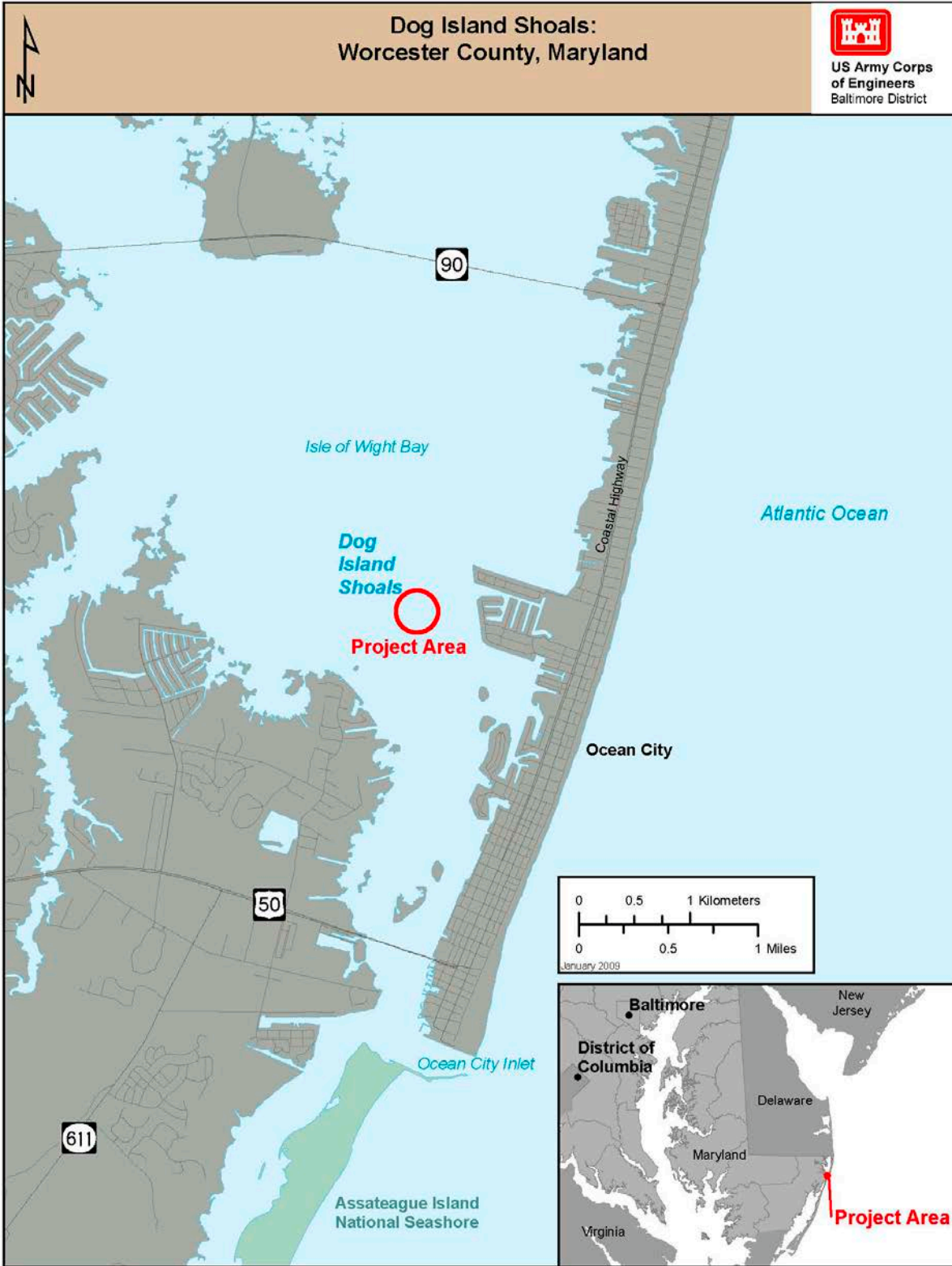
SCHEDULE:

FY 2014 Completed Work: None.

FY 2015 Scheduled Work: The Baltimore District will continue coordination with the sponsor to determine if there is still interest in pursuing or terminating the project.

COMPLETION: To be determined.

For more information regarding the Dog Island Shoals feasibility study, contact Mr. Anthony A. Clark, CENAB-PL-P, (410) 962-3413, or e-mail anthony.a.clark@usace.army.mil.



U.S. ARMY CORPS OF ENGINEERS – BALTIMORE DISTRICT

P.O. Box 1715, Baltimore, MD 21203

<http://www.nab.usace.army.mil>

Page 3 of 3