



Janes Island, Somerset County, MD

**U.S. ARMY CORPS OF ENGINEERS
FACT SHEET as of February 1, 2014**

BUILDING STRONG®

AUTHORIZATION: Continuing Authorities Program, Section 103 of the River and Harbor Act of 1962, as amended

TYPE OF PROJECT: Beach Erosion and Hurricane and Storm Damage Reduction

CONTRIBUTION TO CHESAPEAKE BAY: Directly contributes to achieving protection and restoration goals established by the 2009 Executive Order 13508 and the 2014 Chesapeake Bay Program Agreement by recovering vital habitat and conserving land.

PROJECT PHASE: Feasibility

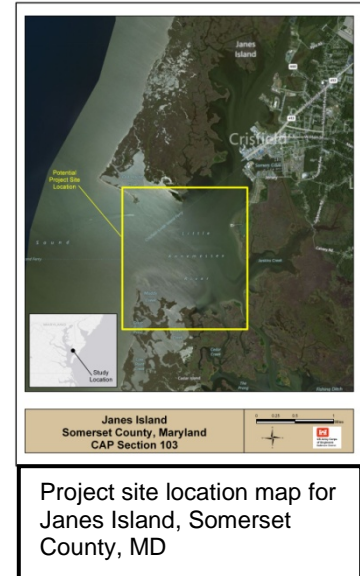
CONGRESSIONAL INTEREST: Senators **Mikulski** and **Cardin** (MD); Congressman **Harris** (MD-01)

NON-FEDEAL SPONSOR: City of Crisfield, Maryland

BACKGROUND: Janes Island is located near Crisfield in Somerset County, Maryland. The Great Point section of the island is a projection extending to the northwest from Cedar Marsh that protects the entrance to the harbor of Crisfield.

However, over the past five years, Great Point has been heavily eroded, wiping out about 1,000 feet of the projection. Storms, increased boat traffic and a rise in the sea level all contributed to Great Point's erosion. The city of Crisfield and its residents have lost much of the protection from the storms and tidal influxes that used to be afforded by Great Point, especially from storms moving from the south or west.

STATUS: On November 21, 2014, the Baltimore District (NAB) and the City of Crisfield executed a Feasibility Cost Sharing Agreement (FCSA). The cost shared feasibility study has initiated and is schedule to conclude in September 2016. Federal funding for this effort comes from the Disaster Relief Appropriations Act of 2013 that was passed in response to Hurricane Sandy, which caused significant damage to the City of Crisfield.



Project site location map for Janes Island, Somerset County, MD

BUDGET (\$):

Construction

Feasibility

<u>Total Estimated Cost</u>	\$843,000
Federal Cost Estimate	471,500
Non-Federal Cost Estimate	371,500

<u>Federal Funds Data</u>	
Allocations thru FY 2013	\$135,400
Allocation for FY 2014	\$0
President Budget FY 2015 ¹	\$0
Allocation for FY 2015 ²	\$250,000
Balance to Complete	\$86,100

NOTES:

¹ The President typically sends the budget to Congress in February each year. Upon release, budget amounts for the USACE Civil Works programs and specified projects are posted online at the HQUSACE website in a Program Budget Press Book at <http://www.usace.army.mil/Missions/CivilWorks/Budget.aspx>.

² The final FY 2015 allocation amounts will be made available upon final approval pursuant to the Energy and Water Appropriations Act's continuing funding requirements.

SCHEDULE:

FY 2014 Completed Work: Finalized the project management plan.

FY 2015 Scheduled Work: Executed the Feasibility Cost Sharing Agreement with the City of Crisfield. Field investigations will commence to help further define the problems and opportunities. Alternative plans will be formulated and evaluated by economic, environmental, and additional effects.

COMPLETION: With optimum funding this feasibility phase can be completed in September 2016.

For more information regarding the Janes Island project, contact Mr. Anthony A. Clark, CENAB-PL-P, (410) 962-3413, or e-mail anthony.a.clark@usace.army.mil.

