

**DEEP CREEK HEADWATERS & COVE
CHANNEL DREDGING**

ANNE ARUNDEL COUNTY

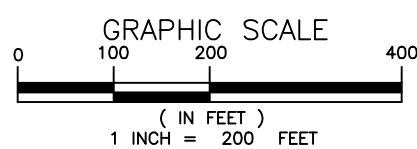
APPL. BY: ANNE ARUNDEL COUNTY
DEPARTMENT OF PUBLIC WORKS

SOUTH COUNTY DMP SITE

DATE REVISED: DECEMBER 2021 SHEET 9 OF 10

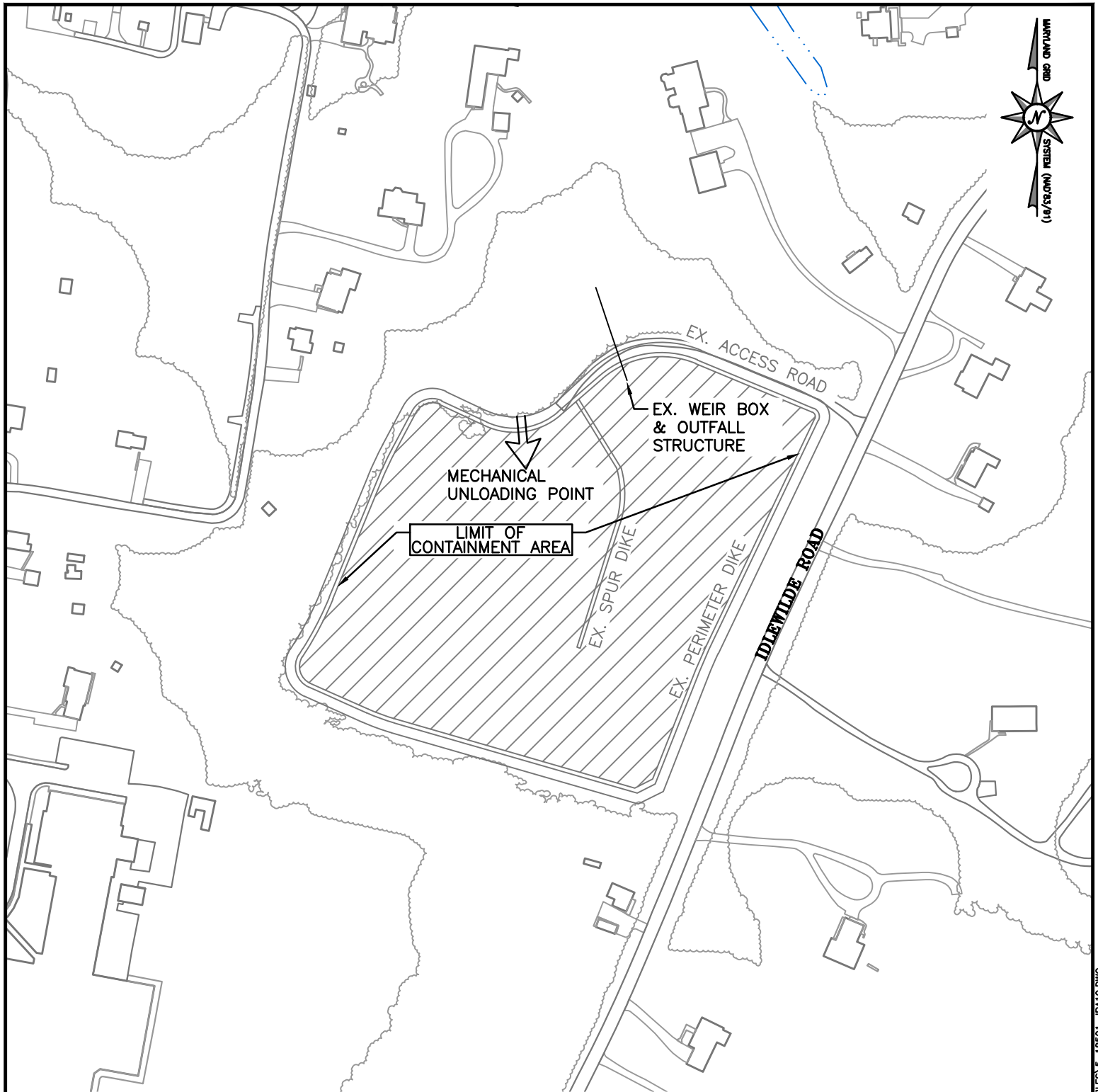
**NAB-2021-60146 (AA CO DPW/Deep Creek/
Mechanical Dredging)**
Sheet 9 of 10
December 2021

- NOTES:**
1. BASEMAP COMPILED FROM ANNE ARUNDEL
2012 PLANIMETRICS AND 2016 IMAGERY.
2. CURRENT AVAILABLE CAPACITY: 100,000 CY




Consultants & Designers, Inc.
"Integrating Engineering and Environment"
7455 New Ridge Road, Suite 1 Phone: (410) 694-9401
Hanover, Maryland 21076 Fax: (410) 694-9405
www.baylandinc.com

Z:\5_18501_DEEP_CREEK_HW_&_COVE_DREDGING\CAD_FILES\SHEET_FILES\5_18501_JPA09.DWG



**DEEP CREEK HEADWATERS & COVE
CHANNEL DREDGING**

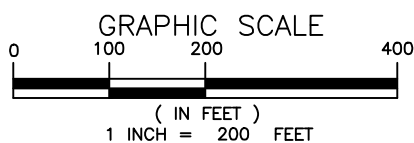
ANNE ARUNDEL COUNTY

APPL. BY: ANNE ARUNDEL COUNTY
DEPARTMENT OF PUBLIC WORKS

IDLEWILDE DMP SITE

DATE REVISED: DECEMBER 2021 SHEET 10 OF 10

**NAB-2021-60146 (AA CO DPW/Deep Creek/
Mechanical Dredging)
Sheet 10 of 10
December 2021**



- NOTES:**
1. BASEMAP COMPILED FROM ANNE ARUNDEL
2012 PLANIMETRICS AND 2016 IMAGERY.
2. CURRENT AVAILABLE CAPACITY: 38,000 CY

Bayland
Consultants & Designers, Inc.
"Integrating Engineering and Environment"
7455 New Ridge Road, Suite 1 Phone: (410) 694-9401
Hanover, Maryland 21076 Fax: (410) 694-9405
www.baylandinc.com

Z:\5_18501_DEEP_CREEK_HW_&_COVE_DREDGING\CAD FILES\SHEET FILES\5_18501_JP10.DWG