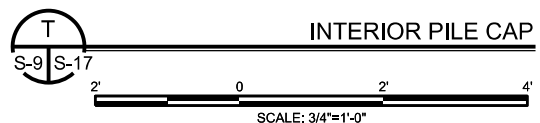
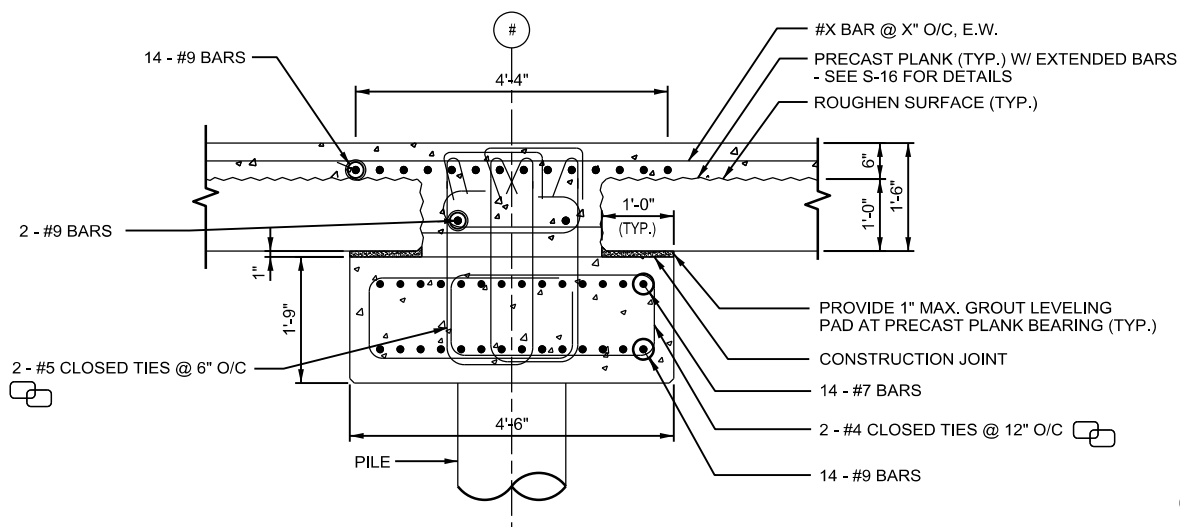
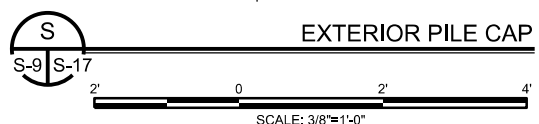
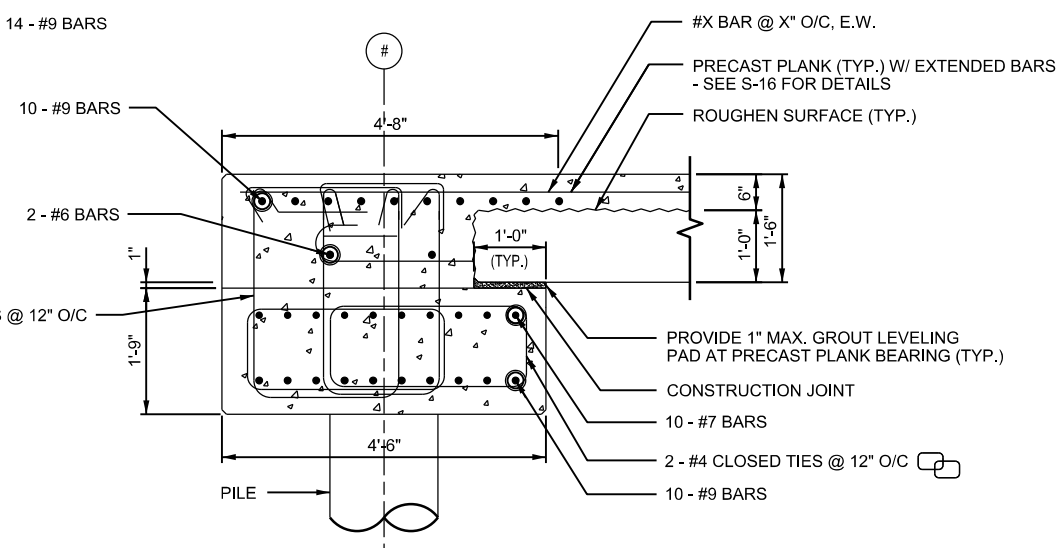


FILE: c:\pwworking\mpapweng\wsp-rrbertson\dms85697\521105MpV-08.dgn

21-WL-1494
 202162190
 7/8/22
 6 of 14



INTERIOR PILE CAP

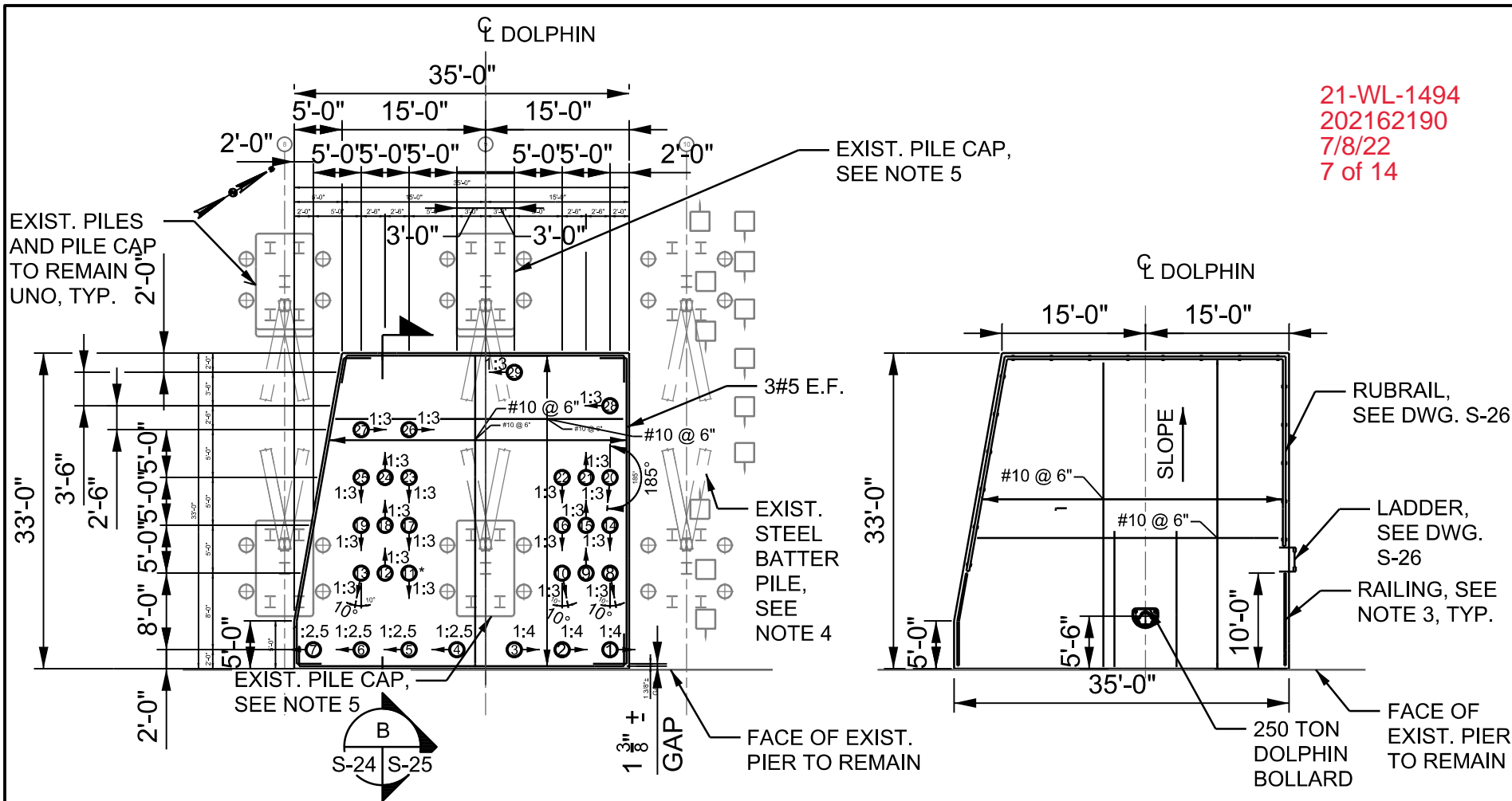


EXTERIOR PILE CAP

<p>MARYLAND PORT ADMINISTRATION</p>	<p>WSP USA 1 Pratt Street Suite 300 Baltimore, MD 21202 (410) 385-4176</p>	PIER 4 REPLACEMENT FAIRFIELD MARINE TERMINAL	
		DESCRIPTION CAP BEAM DETAILS	
		SHEET NO. 6 OF 14	
		DATE: JULY, 2022	SCALE: NONE



FILE: c:\pwworking\mpapweng\wsp-robertson\dms85697\521105MpV-09.dgn

21-WL-1494
202162190
7/8/22
7 of 14



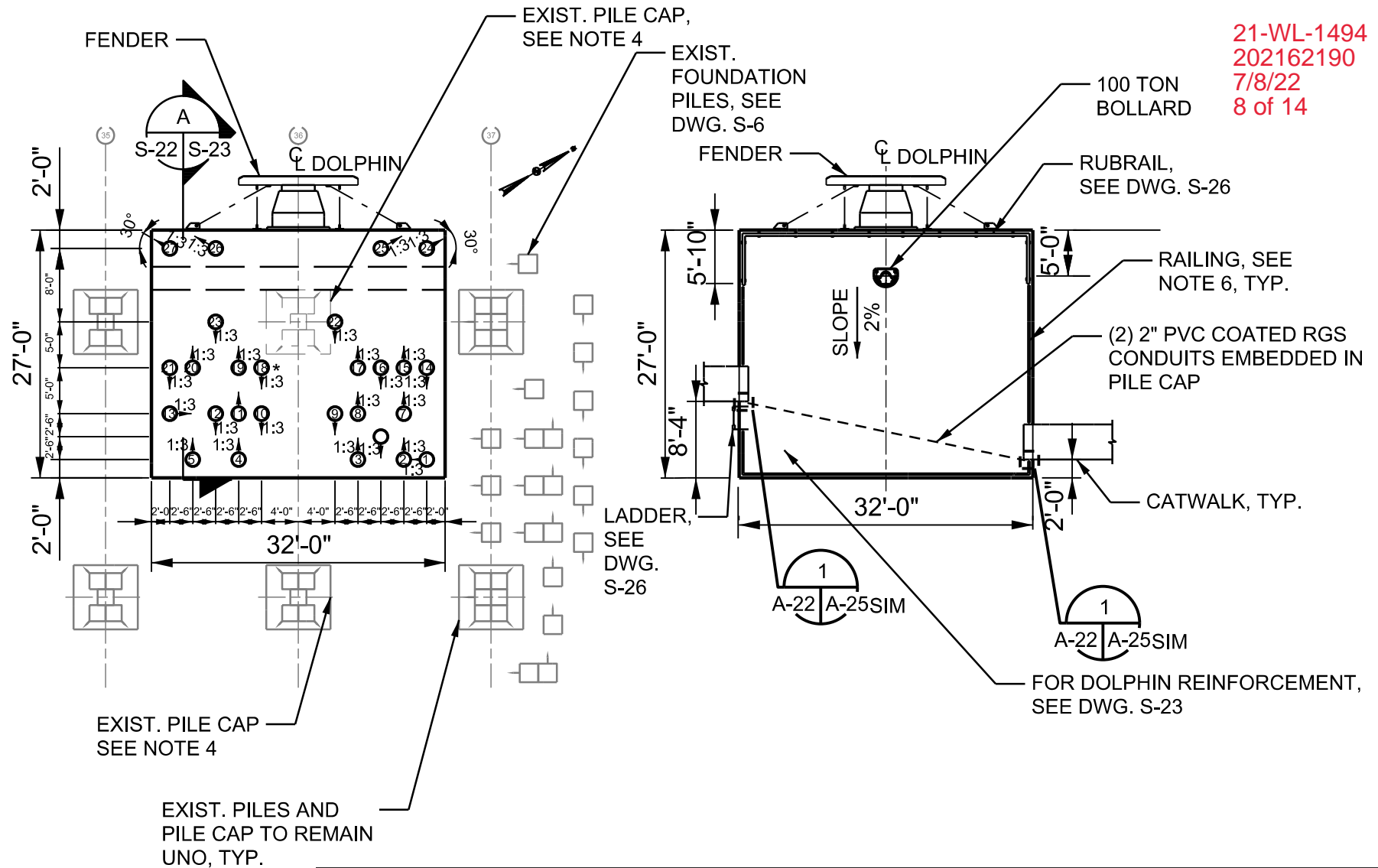
MOORING DOLPHIN A
PILE AND BOTTOM REINFORCEMENT PLAN



MOORING DOLPHIN A
SURFACE AND TOP REINFORCEMENT PLAN

 MARYLAND DEPARTMENT OF TRANSPORTATION MARYLAND PORT ADMINISTRATION	 WSP USA 1 Pratt Street Suite 300 Baltimore, MD 21202 (410) 385-4176	PIER 4 REPLACEMENT FAIRFIELD MARINE TERMINAL	
		DESCRIPTION BREASTING DOLPHIN PLAN & DETAIL "A"	
SHEET NO. 7 OF 14		DATE: JULY, 2022	SCALE: 1/16" = 1'-0"

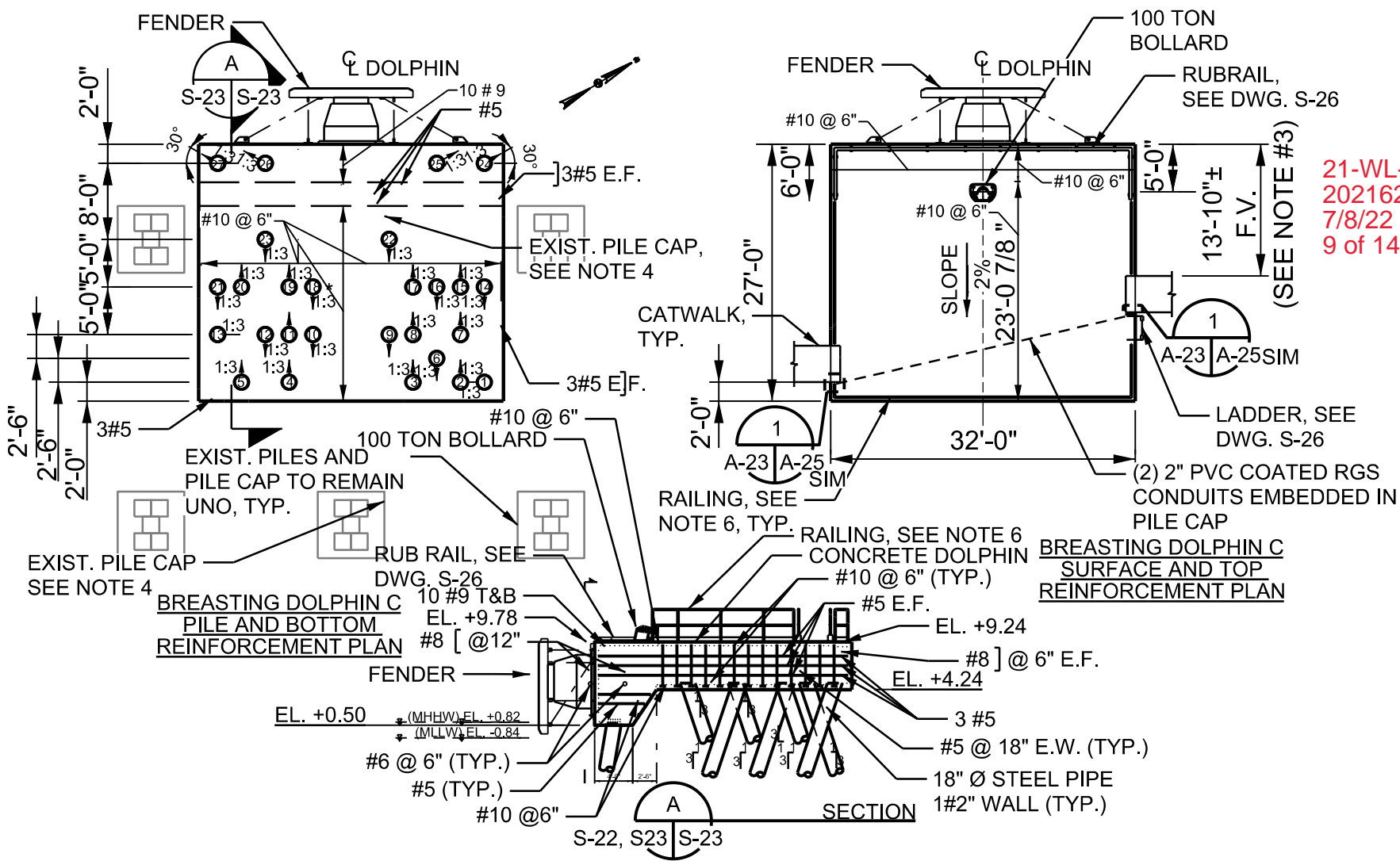
FILE: c:\pwworking\mpapweng\wsp-rrbertson\dms85697\521105MpV-09C.dgn

21-WL-1494
 202162190
 7/8/22
 8 of 14





 MARYLAND DEPARTMENT OF TRANSPORTATION MARYLAND PORT ADMINISTRATION	 WSP USA 1 Pratt Street Suite 300 Baltimore, MD 21202 (410) 385-4176	PIER 4 REPLACEMENT FAIRFIELD MARINE TERMINAL	
		DESCRIPTION BREASTING DOLPHIN PLAN & DETAILS "B"	
SHEET NO. 8 OF 14		DATE:	SCALE:
		JULY, 2022	1/16" = 1'-0"

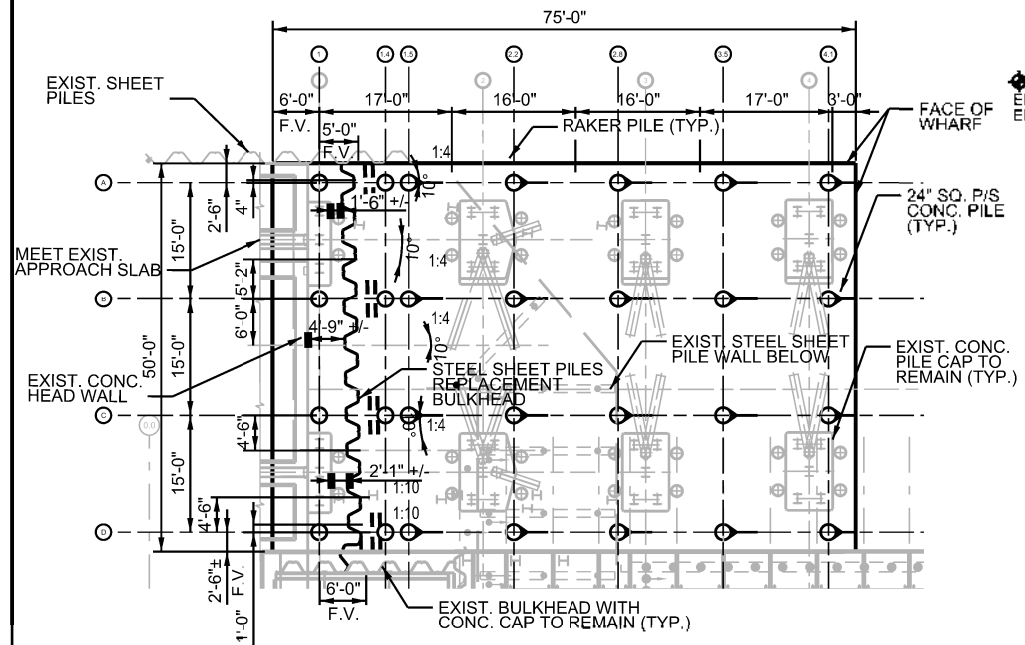
FILE: c:\pwworking\mpapweng\wsp-rrrobertson\dms85697\521105MpV-09a.dgn



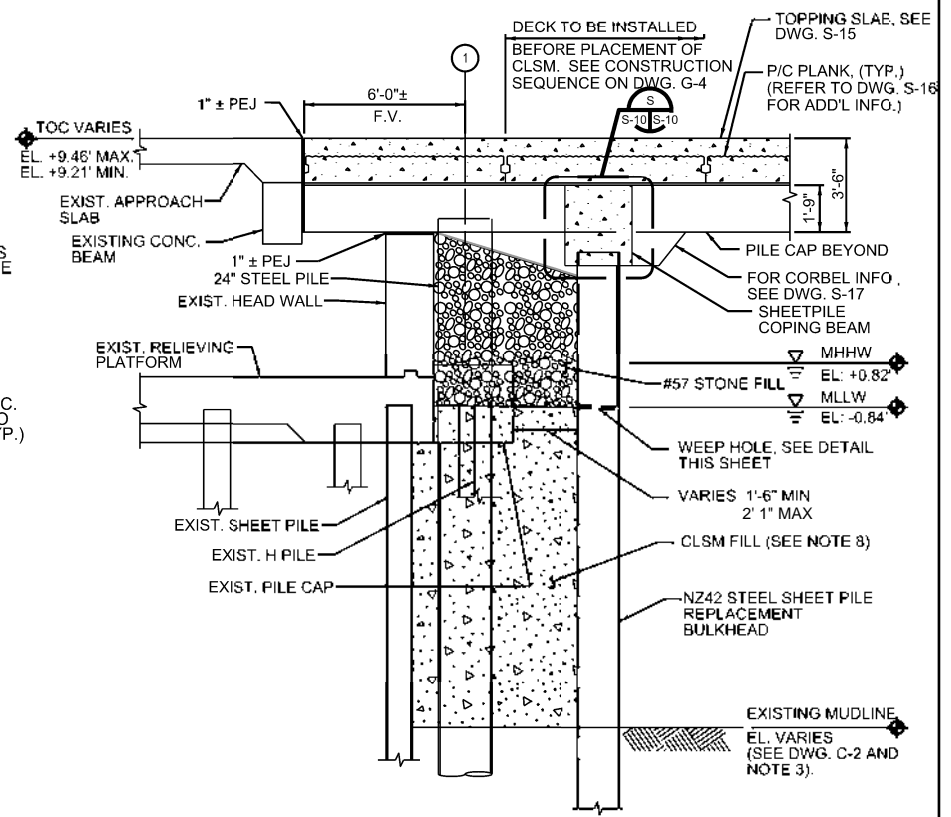
21-WL-1494
202162190
7/8/22
9 of 14

 <p>MARYLAND DEPARTMENT OF TRANSPORTATION</p> <p>MARYLAND PORT ADMINISTRATION</p>	 <p>WSP USA 1 Pratt Street Suite 300 Baltimore, MD 21202 (410) 385-4176</p>	PIER 4 REPLACEMENT FAIRFIELD MARINE TERMINAL	
		DESCRIPTION BREASTING DOLPHIN PLAN & DETAIL "C"	
SHEET NO. 9 OF 14		DATE: JULY, 2022	SCALE: 1/16" = 1'-0"



21-WL-1494
 202162190
 7/8/22
 10 of 14



A STERN RAMP LANDING PLATFORM FOUNDATION PLAN
 XX XX NOT TO SCALE



B STERN RAMP LANDING PLATFORM SECTION
 XX XX NOT TO SCALE

 MARYLAND DEPARTMENT OF TRANSPORTATION MARYLAND PORT ADMINISTRATION	 WSP USA 1 Pratt Street Suite 300 Baltimore, MD 21202 (410) 385-4176	PIER 4 REPLACEMENT FAIRFIELD MARINE TERMINAL	
		DESCRIPTION LANDING PLATFORM FOUNDATION	
		SHEET NO. 10 OF 14	
		DATE: JULY, 2022	SCALE: NOT TO SCALE

FILE: c:\pwworking\mpapweng\wsp-rrbertson\dms85697\521105MpV-010a.dgn