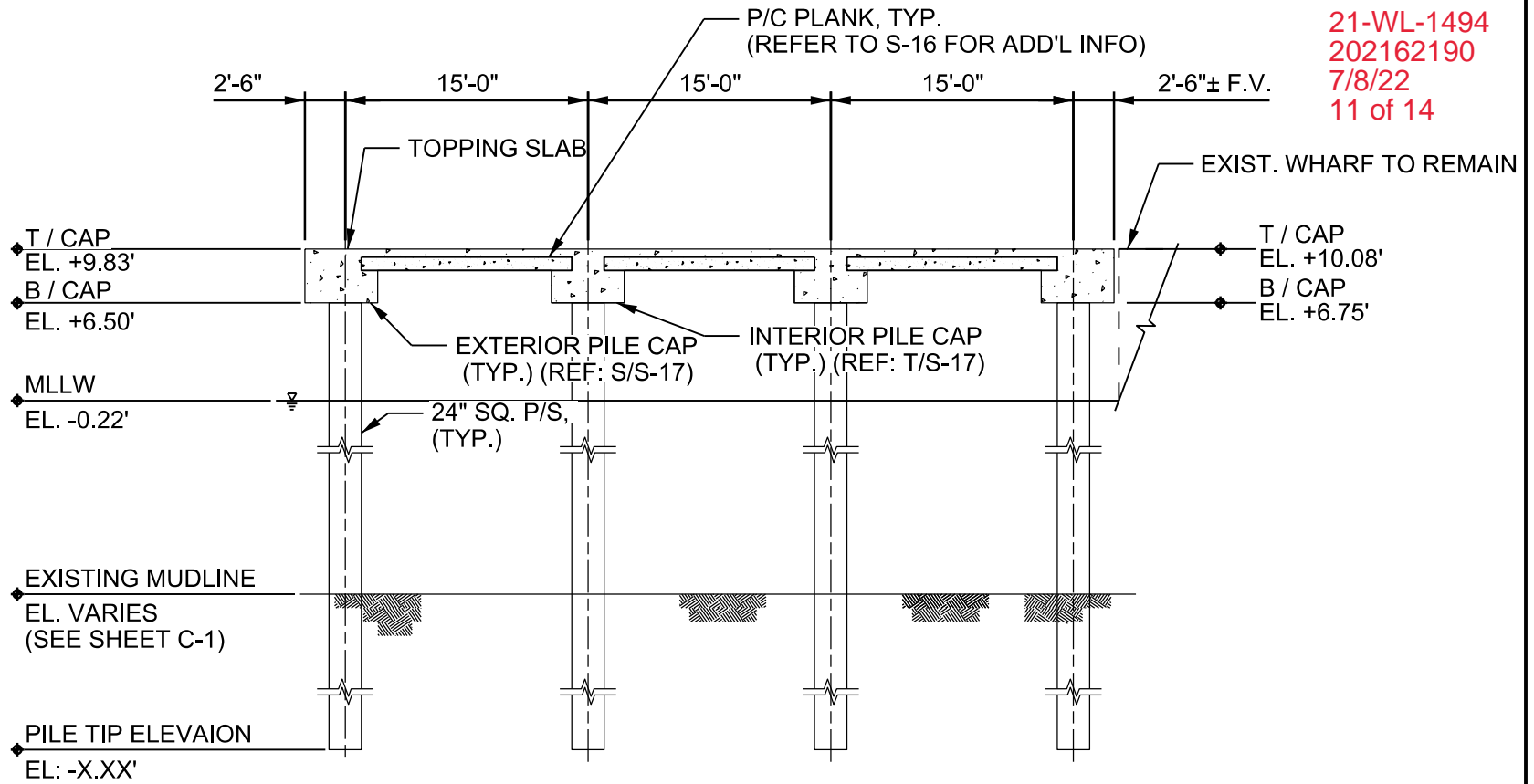




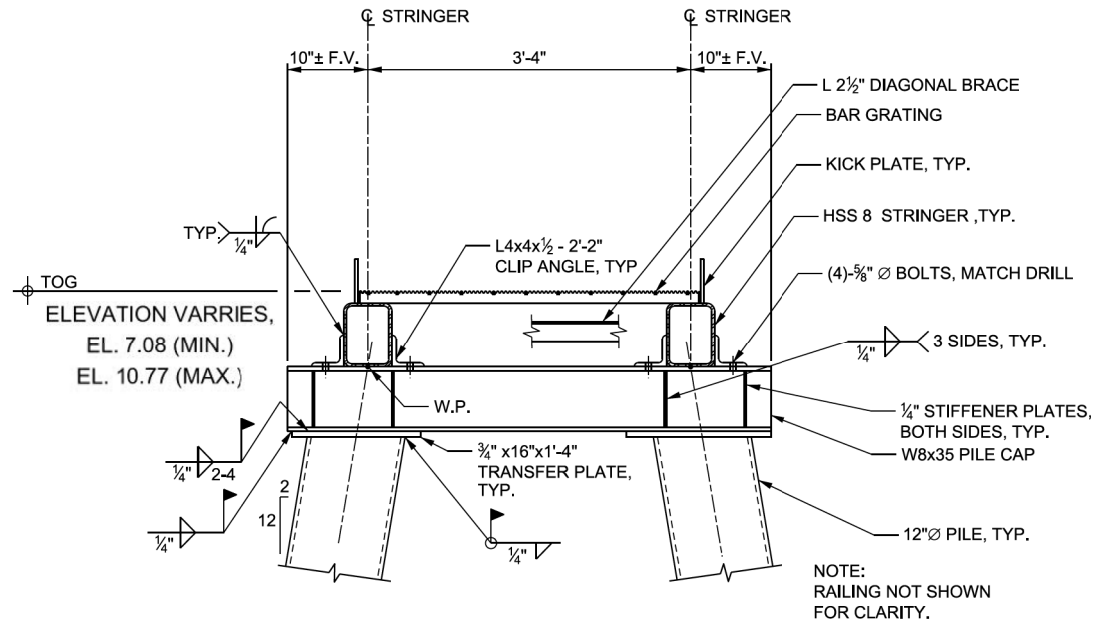
FILE: c:\pwworking\mpapweng\wsp-rrbertson\dms85697\521105MpV-012.dgn



 MARYLAND DEPARTMENT OF TRANSPORTATION MARYLAND PORT ADMINISTRATION	 WSP USA 1 Pratt Street Suite 300 Baltimore, MD 21202 (410) 385-4176	PIER 4 REPLACEMENT FAIRFIELD MARINE TERMINAL	
		DESCRIPTION TRAVERSE SECTION	
		SHEET NO. 11 OF 14	
		DATE: JULY, 2022	SCALE: 3/8"=1'-0"



FILE: c:\pwworking\mpapweng\wsp-rrbertson\dms85697\521105MpV-14.dgn

21-WL-1494
 202162190
 7/8/22
 12 of 14

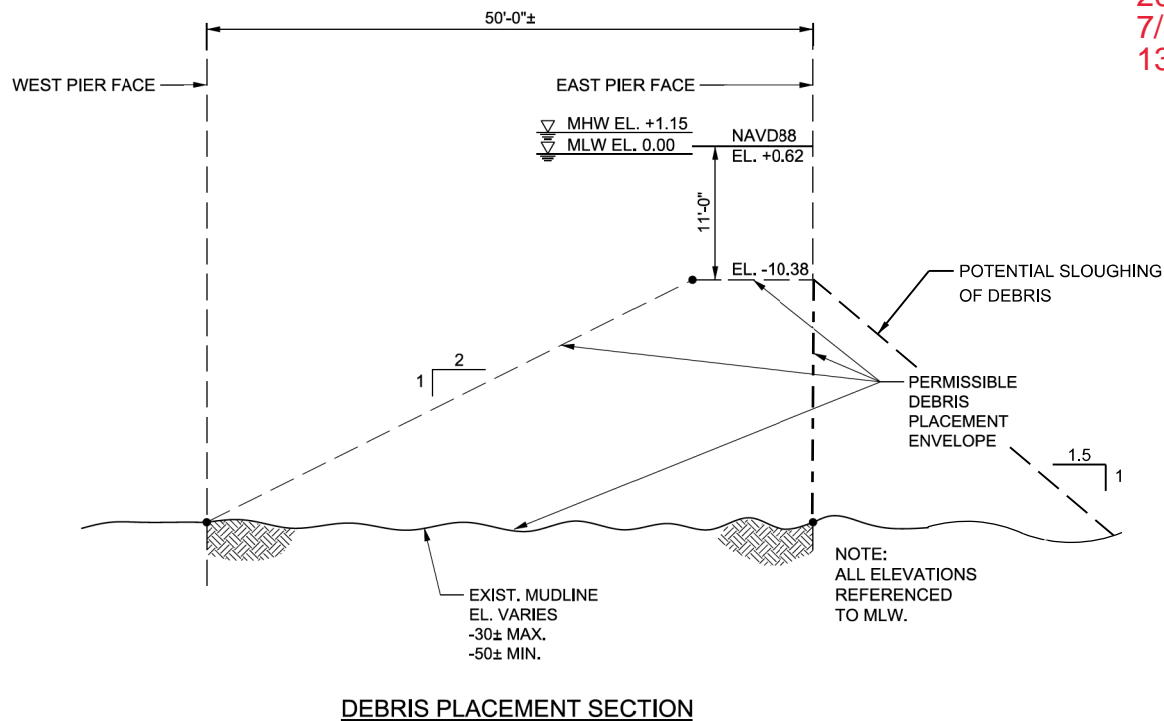


MLW EL. 0.00

E CATWALK INTERMEDIATE SUPPORT SECTION
 S-12A, S-13A | S-13

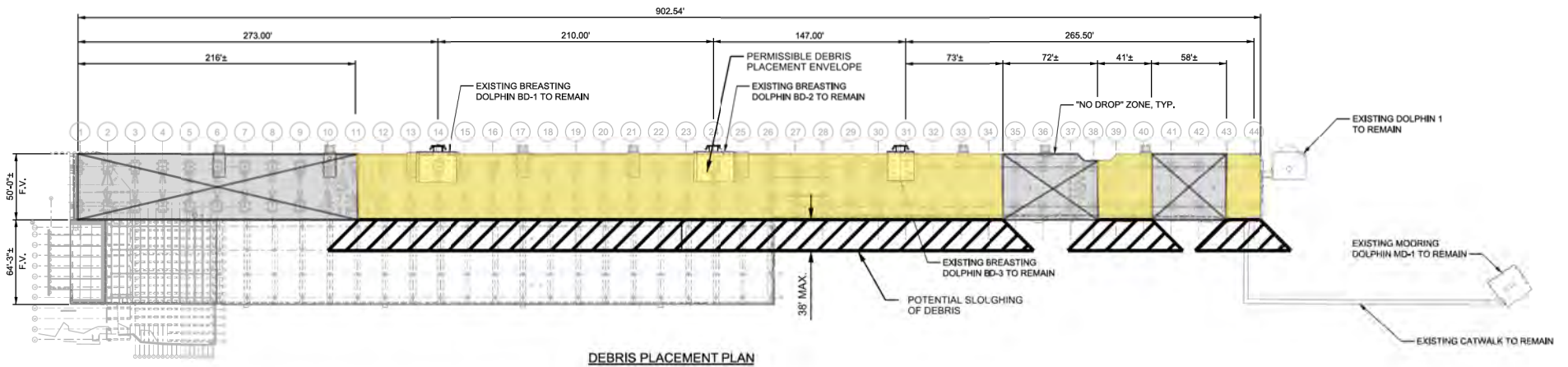
 MARYLAND PORT ADMINISTRATION	 WSP USA 1 Pratt Street Suite 300 Baltimore, MD 21202 (410) 385-4176	PIER 4 REPLACEMENT FAIRFIELD MARINE TERMINAL	
		DESCRIPTION CATWALK SECTION	
		SHEET NO. 12 OF 14	
		DATE: JULY, 2022	SCALE: NONE



21-WL-1494
 202162190
 7/8/22
 13 of 14



	<p>WSP USA 1 Pratt Street Suite 300 Baltimore, MD 21202 (410) 385-4176</p>	PIER 4 REPLACEMENT FAIRFIELD MARINE TERMINAL	
		DESCRIPTION DEBRIS PLACEMENT SECTION	
		SHEET NO. 13 OF 14	
		DATE: JULY, 2022	SCALE: NONE

21-WL-1494
 202162190
 7/8/22
 14 of 14



 MARYLAND DEPARTMENT OF TRANSPORTATION MARYLAND PORT ADMINISTRATION	 WSP USA 1 Pratt Street Suite 300 Baltimore, MD 21202 (410) 385-4176	PIER 4 REPLACEMENT FAIRFIELD MARINE TERMINAL	
		DESCRIPTION DEBRIS PLACEMENT PLAN	
		SHEET NO. 14 OF 14	
		DATE: JULY, 2022	SCALE: NONE