



**INDUSTRY DAY
KIMBROUGH
AMBULATORY CARE CENTER
FT. GEORGE G. MEADE, MD**

BALTIMORE DISTRICT, USACE



U.S. ARMY



US Army Corps
of Engineers®

27-28 APR 2026



AGENDA

- 01** INTRODUCTIONS / OPENING REMARKS
- 02** BACKGROUND / PROJECT SCOPE
- 03** QUESTIONS



US Army Corps
of Engineers®



INTRODUCTIONS (USACE)

DIVISION	NAME	POSITION
Executive Office	COL. Francis B. Pera	Commander and District Engineer
Programs & Project Management	Daria Vanliew	Deputy District Engineer, Programs & Project Management
	Maria Orosz	Chief, Military Programs & Project Management
	Margaret Sharkey	Program Manager, Military Programs & Project Management
	Matt Breitenother	Project Manager, Military Programs & Project Management
Engineering	Mary Foutz	Chief, Engineering Division
	Mugurel Giurgiu	Chief, Military Design Branch
	Shawn Crossfield	Deputy, Military Design Branch
	Kevin Murray	Design Manager, Military Design Branch
Contracting	Paula Beck	Chief, Contracting Division
	Tamara Bonomolo	Chief, Contracting Alpha Branch; Contracting Officer
	Robert Ferebee	Contract Specialist
Construction	Christy Pispitsos	Deputy Chief of Construction
	Matt Beck	Chief, Quality Management Section



U.S. ARMY



US Army Corps of Engineers®



INTRODUCTIONS (DHA)

NAME	POSITION
LCDR Brendan Good	Geographic Chief



U.S. ARMY



US Army Corps
of Engineers®



IMPROVE CONSTRUCTION MOVE THE NEEDLE

“Use this opportunity to show that Army Construction can be just as nimble and efficient as private sector construction..... unleash the innovation of the designer and construction contractor”.



BACKGROUND

DHA requires a new Kimbrough Ambulatory Care Center (ACC) in Fort Meade, MD. The new ACC will:

- Consolidate outpatient and dental services to support the healthcare and readiness missions in a modern, properly sized facility.
- Support primary care, dental care, behavioral health, optometry, musculoskeletal, audiology and hearing conservation, specialty services, preventative medicine, laboratory, radiology, pharmacy, and support services.



U.S. ARMY



US Army Corps
of Engineers®



PROJECT SCOPE

- Construct a new ambulatory care center approximately ~150,000 SF
- Construct a new central utility plant and surface parking
- Demolition of Buildings 2473, 2474, 2475, 2476, 2481 and 2480. Maintain existing KACC (2480) functionality throughout duration of the project
- The RFP will include programmatic requirements, such as PFD (Program for Design) and FPF (Facility Planning Functional Program)
- During Design-Build execution, the Design Team will be responsible for confirming program and developing layouts
- Govt intends to use Design-Build acquisition for Q2 FY29 Construction Award. Government looking for industry innovative solutions



U.S. ARMY

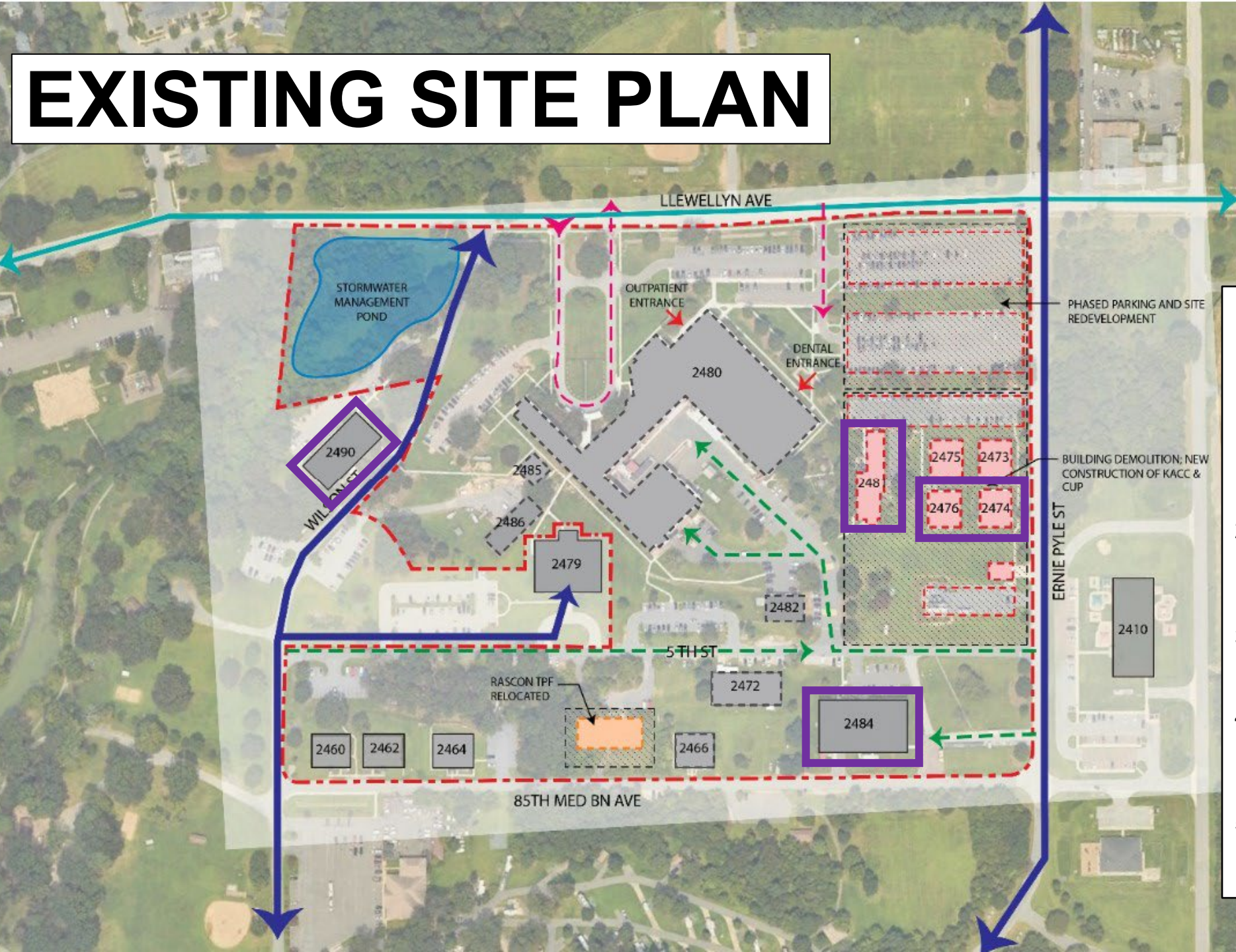


US Army Corps
of Engineers®

EXISTING SITE PLAN

KEY

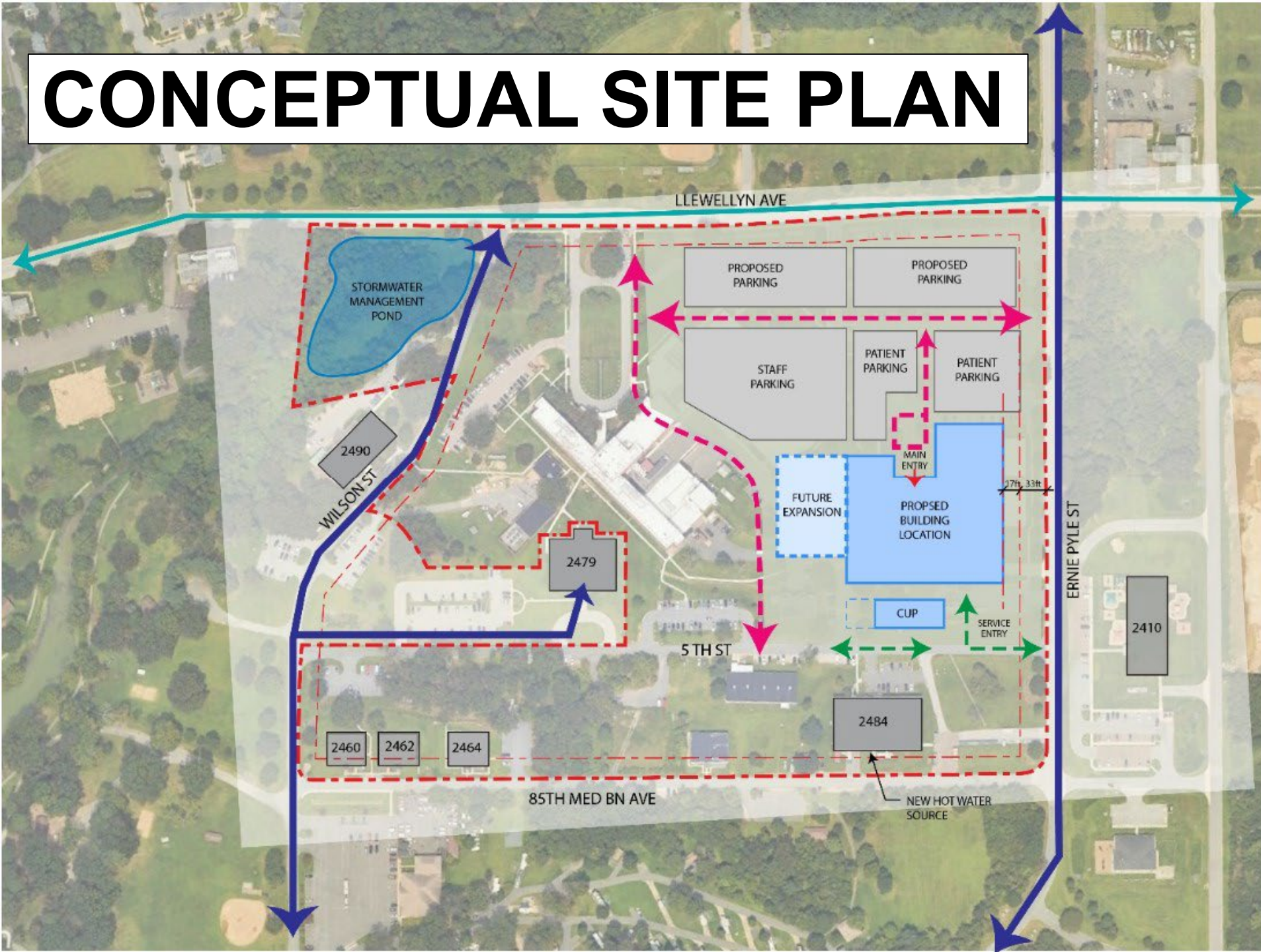
-  EXISTING BUILDINGS
-  AREA OF CONSTRUCTION
-  BUILDING DEMOLITION
-  FUTURE DEMOLITION
-  TEMPORARY BUILDING
-  PRIMARY ROADS
-  SECONDARY ROADS
-  LOGISTICS/SERVICE ROADS
-  BUILDING ENTRANCE
-  PATIENT/STAFF ACCESS



- ### Supplemental Projects/Actions (PURPLE)
1. 2474 tenants to move to renovated space in Building 4418 W on Llewellyn Ave.
 2. 2476 tenants to receive temporary location (final location new KACC or tbd)
 3. 2490 to receive new dedicated chiller plant
 4. 2481 to receive temporary location (final location new KACC)
 5. 2484 to receive independent utilities

CONCEPTUAL SITE PLAN

- KEY**
- EXISTING BUILDINGS
 - AREA OF CONSTRUCTION
 - BUILDING DEMOLITION
 - NEW BUILDING
 - FUTURE BUILDING
 - PRIMARY ROADS
 - SECONDARY ROADS
 - LOGISTICS/SERVICE ROADS
 - BUILDING ENTRANCE
 - PATIENT/STAFF ACCESS





QUESTIONS?



**US Army Corps
of Engineers®**