

APPENDIX F:
MD DEPARTMENT OF THE ENVIRONMENT EJ SCREENING TOOL
REPORT



EJScreen Community Report

This report provides environmental and socioeconomic information for user-defined areas, and combines that data into environmental justice and supplemental indexes.

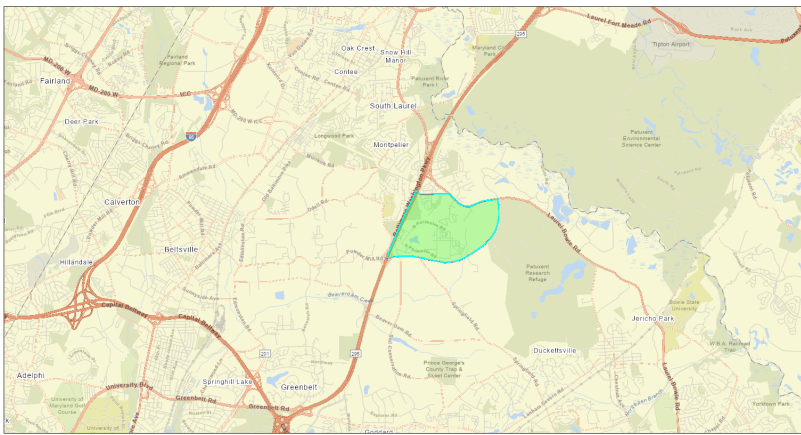
South Laurel, MD

Blockgroup: 240338002062

Population: 1,228

Area in square miles: 1.66

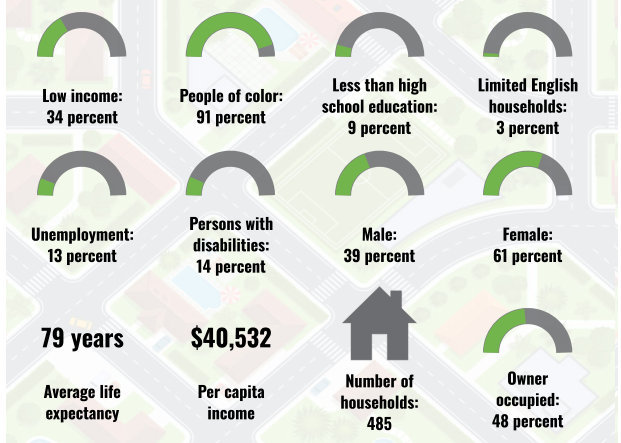
A3 Landscape



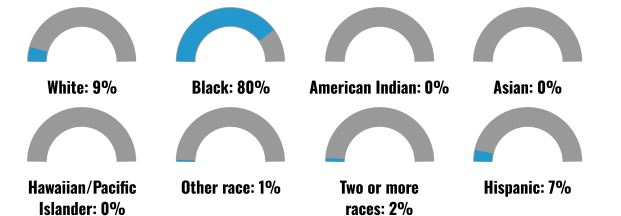
LANGUAGES SPOKEN AT HOME

LANGUAGE	PERCENT
English	79%
Spanish	11%
French, Haitian, or Cajun	3%
Other Indo-European	1%
Tagalog (including Filipino)	1%
Other and Unspecified	4%
Total Non-English	21%

COMMUNITY INFORMATION



BREAKDOWN BY RACE



BREAKDOWN BY AGE



LIMITED ENGLISH SPEAKING BREAKDOWN



Notes: Numbers may not sum to totals due to rounding. Hispanic population can be of any race. Source: U.S. Census Bureau, American Community Survey (ACS) 2017-2021. Life expectancy data comes from the Centers for Disease Control.

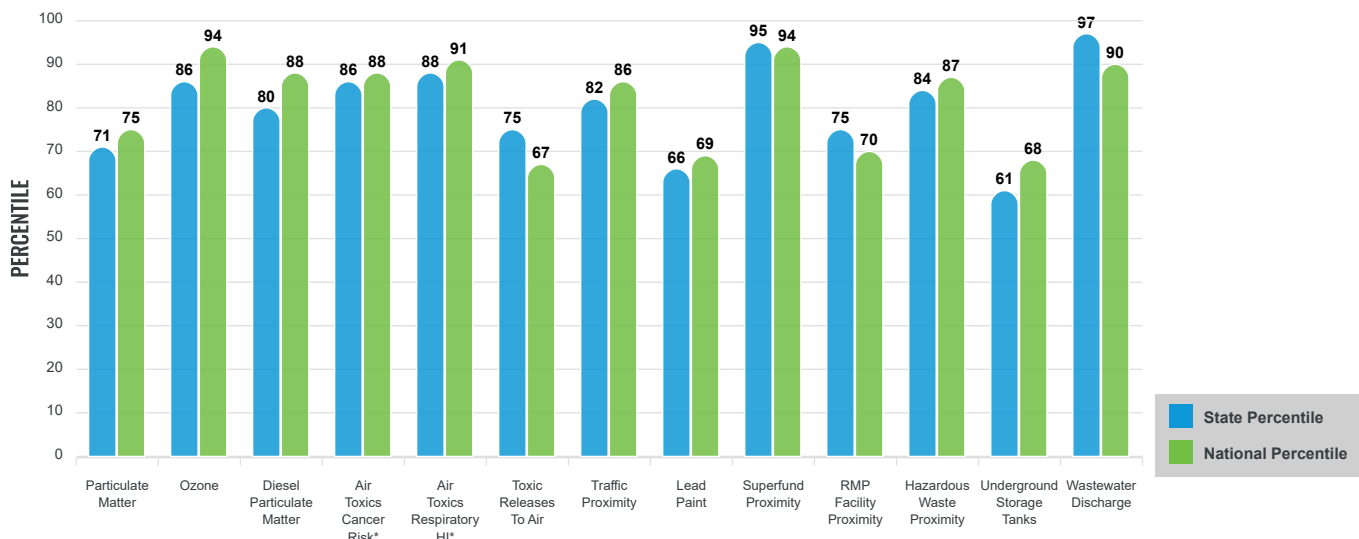
Environmental Justice & Supplemental Indexes

The environmental justice and supplemental indexes are a combination of environmental and socioeconomic information. There are thirteen EJ indexes and supplemental indexes in EJScreen reflecting the 13 environmental indicators. The indexes for a selected area are compared to those for all other locations in the state or nation. For more information and calculation details on the EJ and supplemental indexes, please visit the [EJScreen website](#).

EJ INDEXES

The EJ indexes help users screen for potential EJ concerns. To do this, the EJ index combines data on low income and people of color populations with a single environmental indicator.

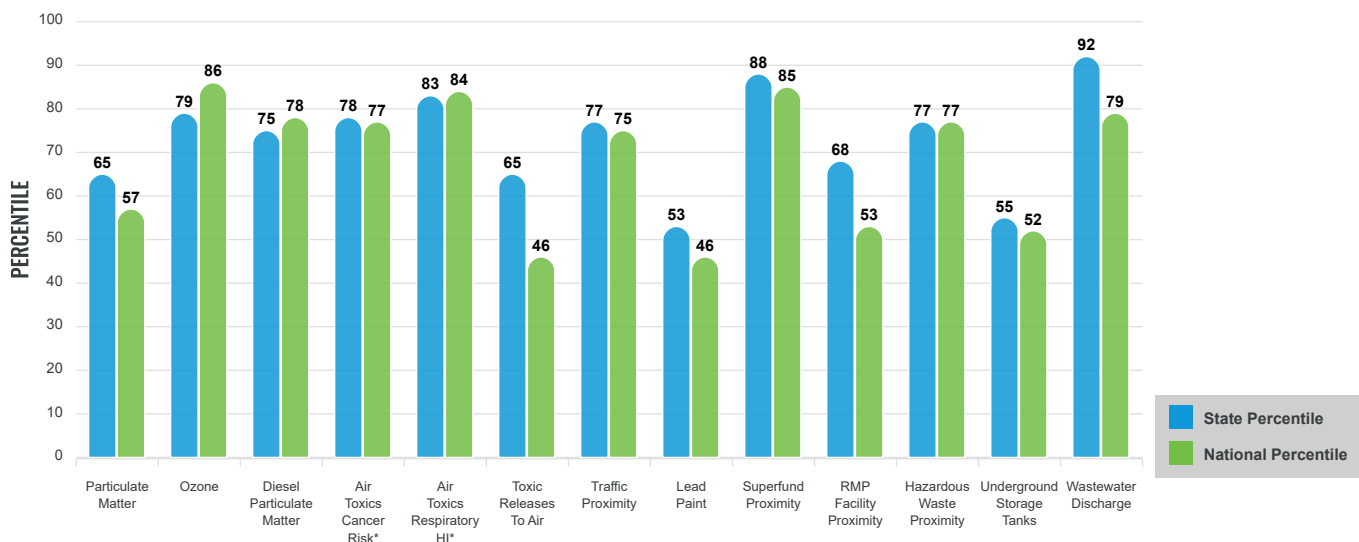
EJ INDEXES FOR THE SELECTED LOCATION



SUPPLEMENTAL INDEXES

The supplemental indexes offer a different perspective on community-level vulnerability. They combine data on percent low-income, percent linguistically isolated, percent less than high school education, percent unemployed, and low life expectancy with a single environmental indicator.

SUPPLEMENTAL INDEXES FOR THE SELECTED LOCATION



These percentiles provide perspective on how the selected block group or buffer area compares to the entire state or nation.

Report for Blockgroup: 240338002062

EJScreen Environmental and Socioeconomic Indicators Data

SELECTED VARIABLES	VALUE	STATE AVERAGE	PERCENTILE IN STATE	USA AVERAGE	PERCENTILE IN USA
POLLUTION AND SOURCES					
Particulate Matter ($\mu\text{g}/\text{m}^3$)	7.88	7.84	42	8.08	42
Ozone (ppb)	68.2	66	64	61.6	89
Diesel Particulate Matter ($\mu\text{g}/\text{m}^3$)	0.326	0.288	60	0.261	73
Air Toxics Cancer Risk* (lifetime risk per million)	30	28	18	25	52
Air Toxics Respiratory HI*	0.4	0.34	50	0.31	70
Toxic Releases to Air	200	430	45	4,600	32
Traffic Proximity (daily traffic count/distance to road)	160	180	64	210	69
Lead Paint (% Pre-1960 Housing)	0.095	0.32	33	0.3	34
Superfund Proximity (site count/km distance)	0.23	0.13	87	0.13	88
RMP Facility Proximity (facility count/km distance)	0.13	0.42	49	0.43	38
Hazardous Waste Proximity (facility count/km distance)	1.8	2.1	63	1.9	71
Underground Storage Tanks (count/km ²)	0.34	1.9	33	3.9	36
Wastewater Discharge (toxicity-weighted concentration/m distance)	0.027	1.2	88	22	75
SOCIOECONOMIC INDICATORS					
Demographic Index	63%	36%	86	35%	85
Supplemental Demographic Index	15%	12%	75	14%	63
People of Color	91%	49%	82	39%	89
Low Income	34%	22%	77	31%	62
Unemployment Rate	13%	6%	89	6%	87
Limited English Speaking Households	3%	3%	70	5%	67
Less Than High School Education	9%	10%	61	12%	54
Under Age 5	2%	6%	24	6%	26
Over Age 64	8%	16%	19	17%	18
Low Life Expectancy	19%	19%	48	20%	42

*Diesel particulate matter, air toxics cancer risk, and air toxics respiratory hazard index are from the EPA's Air Toxics Data Update, which is the Agency's ongoing, comprehensive evaluation of air toxics in the United States. This effort aims to prioritize air toxics, emission sources, and locations of interest for further study. It is important to remember that the air toxics data presented here provide broad estimates of health risks over geographic areas of the country, not definitive risks to specific individuals or locations. Cancer risks and hazard indices from the Air Toxics Data Update are reported to one significant figure and any additional significant figures here are due to rounding. More information on the Air Toxics Data Update can be found at: <https://www.epa.gov/haps/air-toxics-data-update>.

Sites reporting to EPA within defined area:

Superfund	0
Hazardous Waste, Treatment, Storage, and Disposal Facilities	0
Water Dischargers	0
Air Pollution	0
Brown fields	0
Toxic Release Inventory	0

Other community features within defined area:

Schools	0
Hospitals	0
Places of Worship	1

Other environmental data:

Air Non-attainment	Yes
Impaired Waters	Yes

Selected location contains American Indian Reservation Lands*	No
Selected location contains a "Justice40 (CEJST)" disadvantaged community	No
Selected location contains an EPA IRA disadvantaged community	Yes

Report for Blockgroup: 240338002062

EJScreen Environmental and Socioeconomic Indicators Data

HEALTH INDICATORS					
INDICATOR	HEALTH VALUE	STATE AVERAGE	STATE PERCENTILE	US AVERAGE	US PERCENTILE
Low Life Expectancy	19%	19%	48	20%	42
Heart Disease	3.1	5.3	6	6.1	4
Asthma	9.7	9.9	52	10	46
Cancer	4	6.1	10	6.1	11
Persons with Disabilities	12.3%	11.8%	61	13.4%	48

CLIMATE INDICATORS					
INDICATOR	HEALTH VALUE	STATE AVERAGE	STATE PERCENTILE	US AVERAGE	US PERCENTILE
Flood Risk	2%	7%	32	12%	23
Wild re Risk	0%	1%	0	14%	0

CRITICAL SERVICE GAPS					
INDICATOR	HEALTH VALUE	STATE AVERAGE	STATE PERCENTILE	US AVERAGE	US PERCENTILE
Broadband Internet	1%	11%	17	14%	13
Lack of Health Insurance	8%	6%	78	9%	59
Housing Burden	No	N/A	N/A	N/A	N/A
Transportation Access	Yes	N/A	N/A	N/A	N/A
Food Desert	No	N/A	N/A	N/A	N/A

Footnotes

Report for Blockgroup: 240338002062



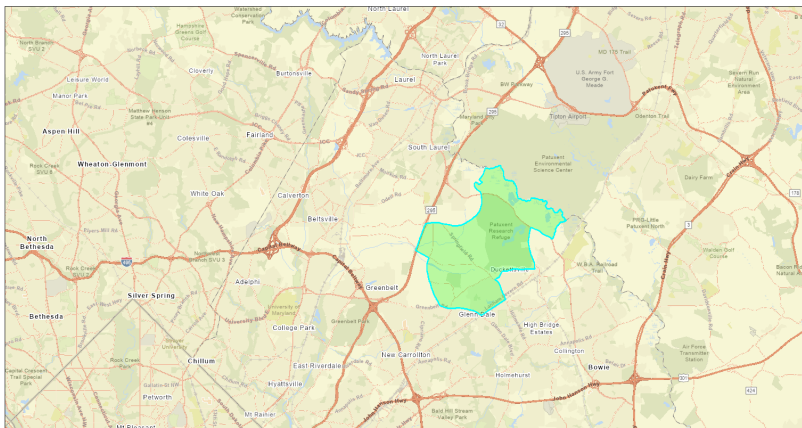
EJScreen Community Report

This report provides environmental and socioeconomic information for user-defined areas, and combines that data into environmental justice and supplemental indexes.

Prince George's County, MD

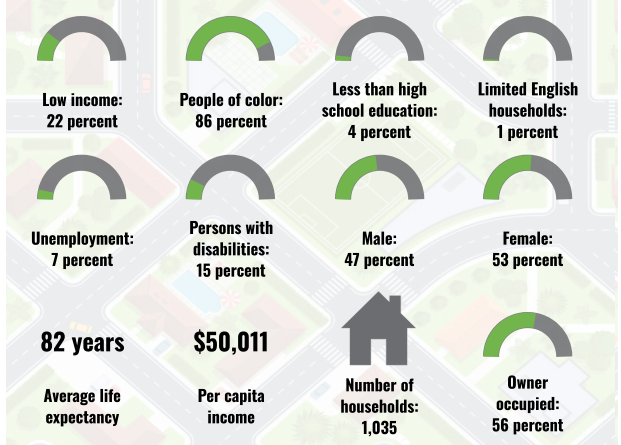
Blockgroup: 240338004111
 Population: 2,765
 Area in square miles: 12.91

A3 Landscape



October 25, 2023
 Project 2
 1:144,448
 0 1.25 2.5 5 mi
 0 2.25 4.5 9 km
MATCHED: WGSN, ENR, HESSE, German, Salschraun, GeoTechnologies, Inc., METRIGIA, USGS, EPA, USGS, USGS

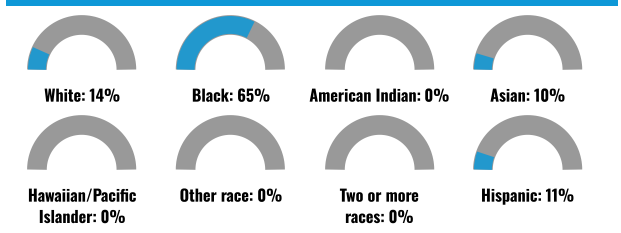
COMMUNITY INFORMATION



LANGUAGES SPOKEN AT HOME

LANGUAGE	PERCENT
English	65%
Spanish	8%
Russian, Polish, or Other Slavic	1%
Other Indo-European	3%
Korean	1%
Tagalog (including Filipino)	1%
Other Asian and Pacific Island	4%
Other and Unspecified	16%
Total Non-English	35%

BREAKDOWN BY RACE



BREAKDOWN BY AGE



LIMITED ENGLISH SPEAKING BREAKDOWN



Notes: Numbers may not sum to totals due to rounding. Hispanic population can be of any race. Source: U.S. Census Bureau, American Community Survey (ACS) 2017-2021. Life expectancy data comes from the Centers for Disease Control.

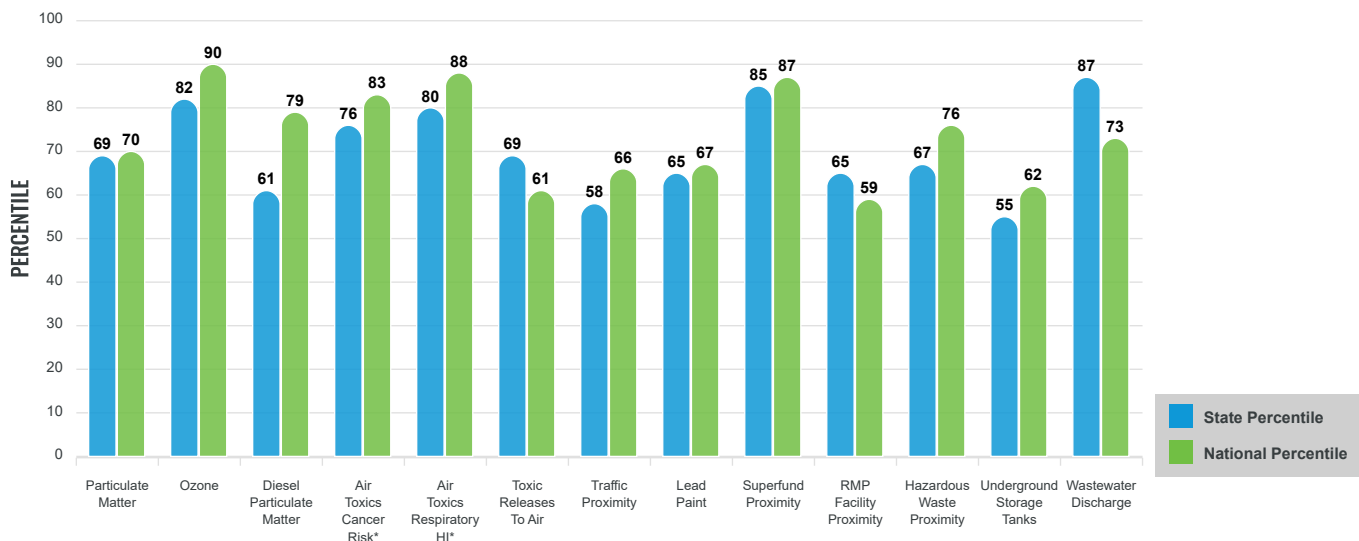
Environmental Justice & Supplemental Indexes

The environmental justice and supplemental indexes are a combination of environmental and socioeconomic information. There are thirteen EJ indexes and supplemental indexes in EJScreen reflecting the 13 environmental indicators. The indexes for a selected area are compared to those for all other locations in the state or nation. For more information and calculation details on the EJ and supplemental indexes, please visit the [EJScreen website](#).

EJ INDEXES

The EJ indexes help users screen for potential EJ concerns. To do this, the EJ index combines data on low income and people of color populations with a single environmental indicator.

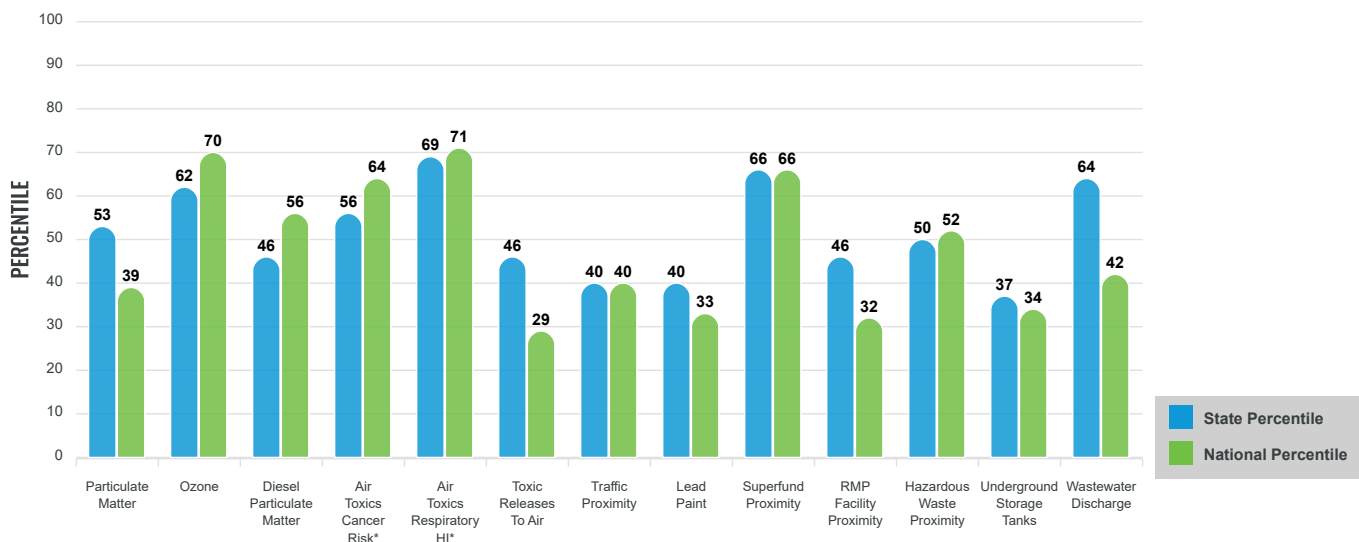
EJ INDEXES FOR THE SELECTED LOCATION



SUPPLEMENTAL INDEXES

The supplemental indexes offer a different perspective on community-level vulnerability. They combine data on percent low-income, percent linguistically isolated, percent less than high school education, percent unemployed, and low life expectancy with a single environmental indicator.

SUPPLEMENTAL INDEXES FOR THE SELECTED LOCATION



These percentiles provide perspective on how the selected block group or buffer area compares to the entire state or nation.

Report for Blockgroup: 240338004111

EJScreen Environmental and Socioeconomic Indicators Data

SELECTED VARIABLES	VALUE	STATE AVERAGE	PERCENTILE IN STATE	USA AVERAGE	PERCENTILE IN USA
POLLUTION AND SOURCES					
Particulate Matter ($\mu\text{g}/\text{m}^3$)	7.91	7.84	46	8.08	42
Ozone (ppb)	68.1	66	63	61.6	89
Diesel Particulate Matter ($\mu\text{g}/\text{m}^3$)	0.267	0.288	40	0.261	62
Air Toxics Cancer Risk* (lifetime risk per million)	30	28	18	25	52
Air Toxics Respiratory HI*	0.4	0.34	50	0.31	70
Toxic Releases to Air	190	430	43	4,600	31
Traffic Proximity (daily traffic count/distance to road)	56	180	35	210	42
Lead Paint (% Pre-1960 Housing)	0.11	0.32	36	0.3	37
Superfund Proximity (site count/km distance)	0.15	0.13	77	0.13	79
RMP Facility Proximity (facility count/km distance)	0.11	0.42	42	0.43	31
Hazardous Waste Proximity (facility count/km distance)	0.8	2.1	46	1.9	57
Underground Storage Tanks (count/km ²)	0.25	1.9	30	3.9	33
Wastewater Discharge (toxicity-weighted concentration/m distance)	0.00079	1.2	66	22	46
SOCIOECONOMIC INDICATORS					
Demographic Index	54%	36%	76	35%	78
Supplemental Demographic Index	10%	12%	47	14%	33
People of Color	86%	49%	78	39%	86
Low Income	22%	22%	58	31%	40
Unemployment Rate	7%	6%	70	6%	68
Limited English Speaking Households	1%	3%	59	5%	58
Less Than High School Education	4%	10%	31	12%	28
Under Age 5	5%	6%	49	6%	50
Over Age 64	18%	16%	63	17%	60
Low Life Expectancy	16%	19%	18	20%	15

*Diesel particulate matter, air toxics cancer risk, and air toxics respiratory hazard index are from the EPA's Air Toxics Data Update, which is the Agency's ongoing, comprehensive evaluation of air toxics in the United States. This effort aims to prioritize air toxics, emission sources, and locations of interest for further study. It is important to remember that the air toxics data presented here provide broad estimates of health risks over geographic areas of the country, not definitive risks to specific individuals or locations. Cancer risks and hazard indices from the Air Toxics Data Update are reported to one significant figure and any additional significant figures here are due to rounding. More information on the Air Toxics Data Update can be found at: <https://www.epa.gov/haps/air-toxics-data-update>.

Sites reporting to EPA within defined area:

Superfund	0
Hazardous Waste, Treatment, Storage, and Disposal Facilities	1
Water Dischargers	5
Air Pollution	7
Brown fields	0
Toxic Release Inventory	2

Other community features within defined area:

Schools	0
Hospitals	0
Places of Worship	6

Other environmental data:

Air Non-attainment	Yes
Impaired Waters	Yes

Selected location contains American Indian Reservation Lands*	No
Selected location contains a "Justice40 (CEJST)" disadvantaged community	No
Selected location contains an EPA IRA disadvantaged community	No

Report for Blockgroup: 240338004111

EJScreen Environmental and Socioeconomic Indicators Data

HEALTH INDICATORS					
INDICATOR	HEALTH VALUE	STATE AVERAGE	STATE PERCENTILE	US AVERAGE	US PERCENTILE
Low Life Expectancy	16%	19%	18	20%	15
Heart Disease	4	5.3	19	6.1	12
Asthma	9.3	9.9	38	10	33
Cancer	4.8	6.1	23	6.1	22
Persons with Disabilities	12.2%	11.8%	61	13.4%	48

CLIMATE INDICATORS					
INDICATOR	HEALTH VALUE	STATE AVERAGE	STATE PERCENTILE	US AVERAGE	US PERCENTILE
Flood Risk	4%	7%	54	12%	38
Wild re Risk	0%	1%	0	14%	0

CRITICAL SERVICE GAPS					
INDICATOR	HEALTH VALUE	STATE AVERAGE	STATE PERCENTILE	US AVERAGE	US PERCENTILE
Broadband Internet	2%	11%	20	14%	14
Lack of Health Insurance	10%	6%	86	9%	70
Housing Burden	No	N/A	N/A	N/A	N/A
Transportation Access	Yes	N/A	N/A	N/A	N/A
Food Desert	No	N/A	N/A	N/A	N/A

Footnotes

Report for Blockgroup: 240338004111

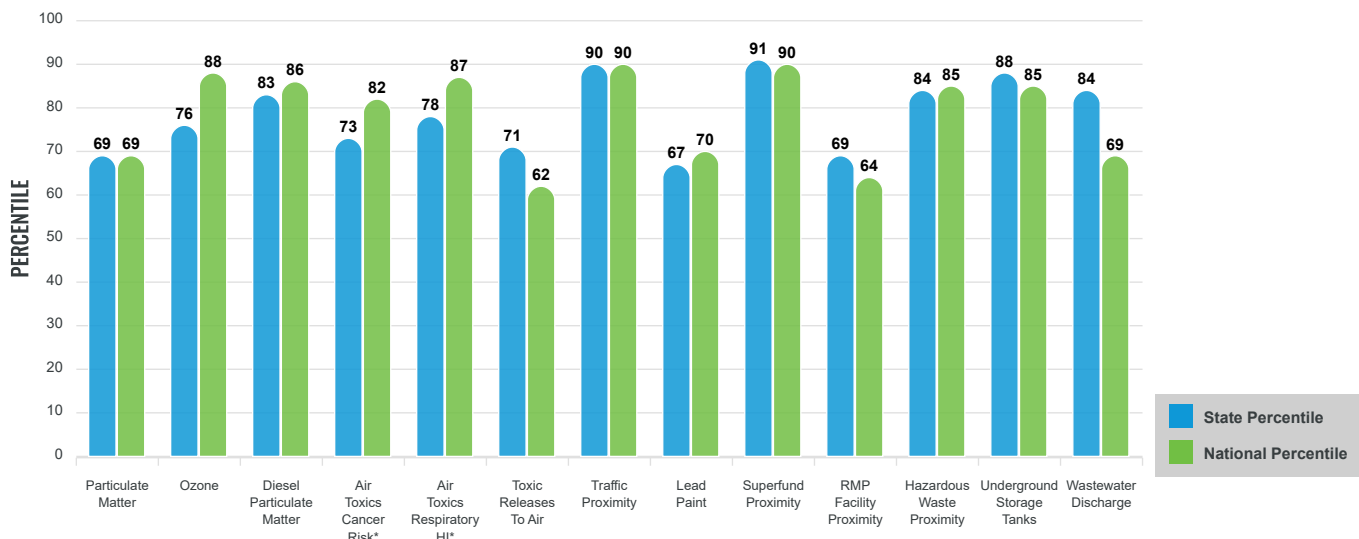
Environmental Justice & Supplemental Indexes

The environmental justice and supplemental indexes are a combination of environmental and socioeconomic information. There are thirteen EJ indexes and supplemental indexes in EJScreen reflecting the 13 environmental indicators. The indexes for a selected area are compared to those for all other locations in the state or nation. For more information and calculation details on the EJ and supplemental indexes, please visit the [EJScreen website](#).

EJ INDEXES

The EJ indexes help users screen for potential EJ concerns. To do this, the EJ index combines data on low income and people of color populations with a single environmental indicator.

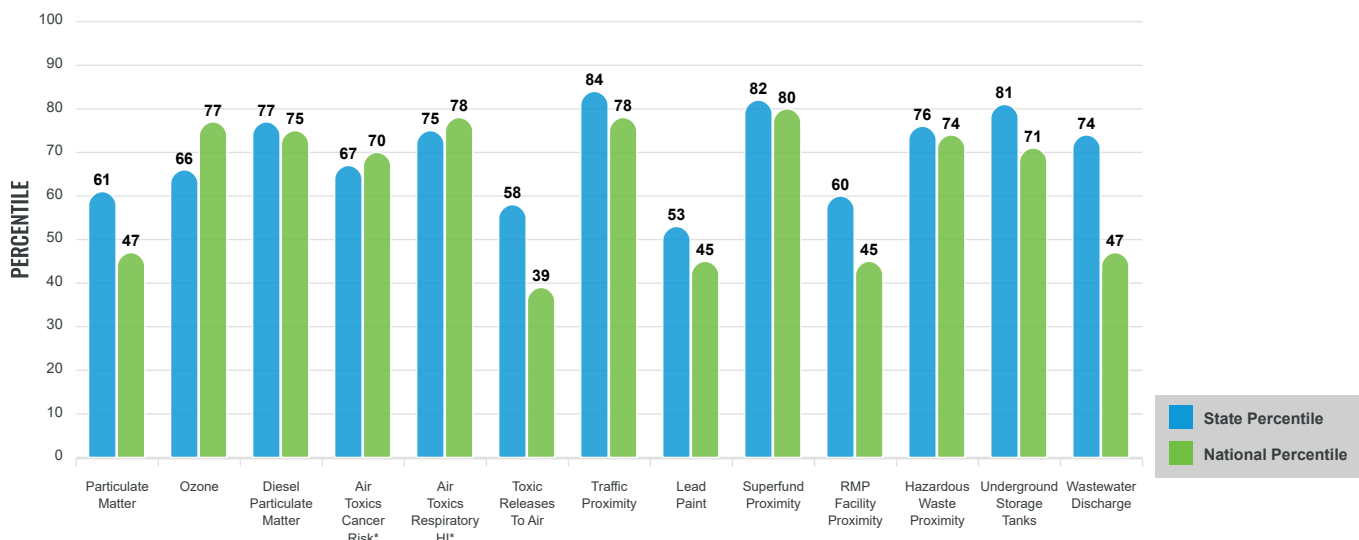
EJ INDEXES FOR THE SELECTED LOCATION



SUPPLEMENTAL INDEXES

The supplemental indexes offer a different perspective on community-level vulnerability. They combine data on percent low-income, percent linguistically isolated, percent less than high school education, percent unemployed, and low life expectancy with a single environmental indicator.

SUPPLEMENTAL INDEXES FOR THE SELECTED LOCATION



These percentiles provide perspective on how the selected block group or buffer area compares to the entire state or nation.

Report for Blockgroup: 240338074042

EJScreen Environmental and Socioeconomic Indicators Data

SELECTED VARIABLES	VALUE	STATE AVERAGE	PERCENTILE IN STATE	USA AVERAGE	PERCENTILE IN USA
POLLUTION AND SOURCES					
Particulate Matter ($\mu\text{g}/\text{m}^3$)	7.91	7.84	47	8.08	42
Ozone (ppb)	67.1	66	56	61.6	85
Diesel Particulate Matter ($\mu\text{g}/\text{m}^3$)	0.389	0.288	80	0.261	82
Air Toxics Cancer Risk* (lifetime risk per million)	30	28	18	25	52
Air Toxics Respiratory HI*	0.4	0.34	50	0.31	70
Toxic Releases to Air	220	430	47	4,600	33
Traffic Proximity (daily traffic count/distance to road)	1,000	180	98	210	96
Lead Paint (% Pre-1960 Housing)	0.15	0.32	41	0.3	42
Superfund Proximity (site count/km distance)	0.42	0.13	94	0.13	93
RMP Facility Proximity (facility count/km distance)	0.13	0.42	49	0.43	38
Hazardous Waste Proximity (facility count/km distance)	3.1	2.1	76	1.9	82
Underground Storage Tanks (count/km ²)	5.6	1.9	91	3.9	79
Wastewater Discharge (toxicity-weighted concentration/m distance)	0.0005	1.2	63	22	42
SOCIOECONOMIC INDICATORS					
Demographic Index	52%	36%	73	35%	76
Supplemental Demographic Index	12%	12%	61	14%	48
People of Color	83%	49%	76	39%	85
Low Income	20%	22%	55	31%	38
Unemployment Rate	7%	6%	69	6%	68
Limited English Speaking Households	7%	3%	86	5%	80
Less Than High School Education	15%	10%	79	12%	71
Under Age 5	15%	6%	96	6%	96
Over Age 64	4%	16%	7	17%	7
Low Life Expectancy	13%	19%	5	20%	3

*Diesel particulate matter, air toxics cancer risk, and air toxics respiratory hazard index are from the EPA's Air Toxics Data Update, which is the Agency's ongoing, comprehensive evaluation of air toxics in the United States. This effort aims to prioritize air toxics, emission sources, and locations of interest for further study. It is important to remember that the air toxics data presented here provide broad estimates of health risks over geographic areas of the country, not definitive risks to specific individuals or locations. Cancer risks and hazard indices from the Air Toxics Data Update are reported to one significant figure and any additional significant figures here are due to rounding. More information on the Air Toxics Data Update can be found at: <https://www.epa.gov/haps/air-toxics-data-update>.

Sites reporting to EPA within defined area:

Superfund	0
Hazardous Waste, Treatment, Storage, and Disposal Facilities	1
Water Dischargers	24
Air Pollution	53
Brown fields	0
Toxic Release Inventory	2

Other community features within defined area:

Schools	0
Hospitals	0
Places of Worship	1

Other environmental data:

Air Non-attainment	Yes
Impaired Waters	Yes

Selected location contains American Indian Reservation Lands*	No
Selected location contains a "Justice40 (CEJST)" disadvantaged community	No
Selected location contains an EPA IRA disadvantaged community	No

Report for Blockgroup: 240338074042

EJScreen Environmental and Socioeconomic Indicators Data

HEALTH INDICATORS					
INDICATOR	HEALTH VALUE	STATE AVERAGE	STATE PERCENTILE	US AVERAGE	US PERCENTILE
Low Life Expectancy	13%	19%	5	20%	3
Heart Disease	4.1	5.3	21	6.1	13
Asthma	8.6	9.9	19	10	15
Cancer	4.5	6.1	18	6.1	18
Persons with Disabilities	7.8%	11.8%	25	13.4%	17

CLIMATE INDICATORS					
INDICATOR	HEALTH VALUE	STATE AVERAGE	STATE PERCENTILE	US AVERAGE	US PERCENTILE
Flood Risk	20%	7%	94	12%	85
Wild re Risk	0%	1%	0	14%	0

CRITICAL SERVICE GAPS					
INDICATOR	HEALTH VALUE	STATE AVERAGE	STATE PERCENTILE	US AVERAGE	US PERCENTILE
Broadband Internet	3%	11%	26	14%	19
Lack of Health Insurance	21%	6%	97	9%	93
Housing Burden	No	N/A	N/A	N/A	N/A
Transportation Access	Yes	N/A	N/A	N/A	N/A
Food Desert	Yes	N/A	N/A	N/A	N/A

Footnotes

Report for Blockgroup: 240338074042



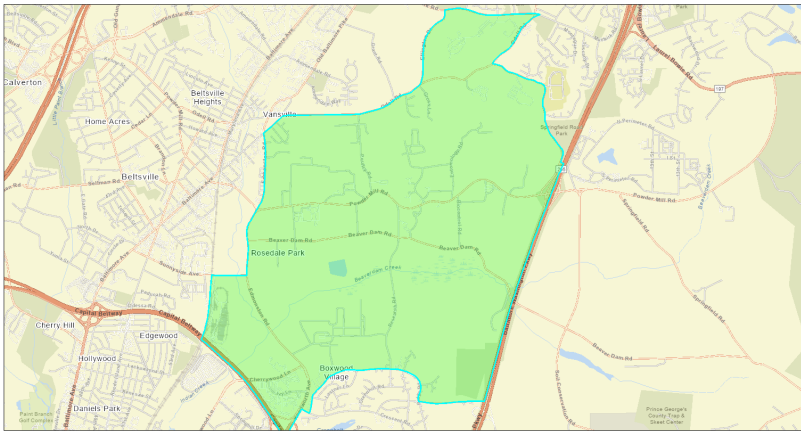
EJScreen Community Report

This report provides environmental and socioeconomic information for user-defined areas, and combines that data into environmental justice and supplemental indexes.

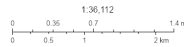
Prince George's County, MD

Blockgroup: 240338074081
 Population: 2,012
 Area in square miles: 6.77

A3 Landscape

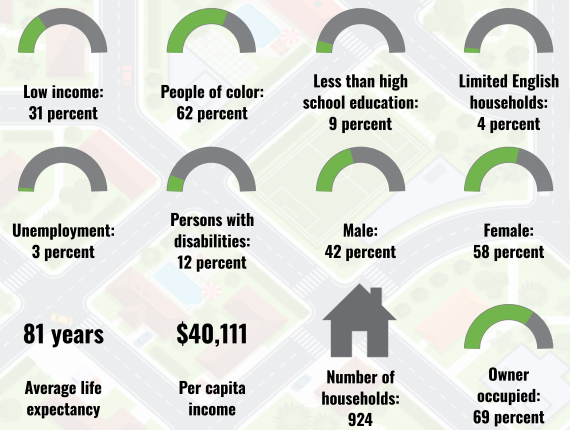


October 25, 2023
 Project 1

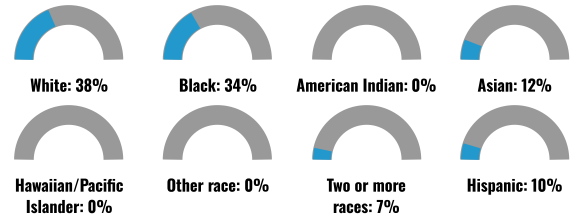


MIDPHD, VGIN, Env, HESD, Census, SaltCrain, govTechnologies, Inc, USTHALLA, USGS, EPA, USF, US Census Bureau, USDA

COMMUNITY INFORMATION



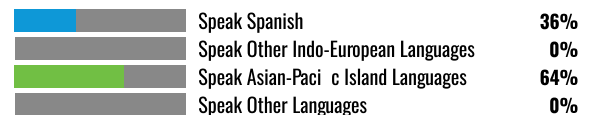
BREAKDOWN BY RACE



BREAKDOWN BY AGE



LIMITED ENGLISH SPEAKING BREAKDOWN



LANGUAGES SPOKEN AT HOME

LANGUAGE	PERCENT
English	82%
Spanish	6%
French, Haitian, or Cajun	1%
Other Indo-European	2%
Chinese (including Mandarin, Cantonese)	3%
Vietnamese	2%
Other Asian and Paci c Island	1%
Other and Unspeci ed	1%
Total Non-English	18%

Notes: Numbers may not sum to totals due to rounding. Hispanic population can be of any race. Source: U.S. Census Bureau, American Community Survey (ACS) 2017-2021. Life expectancy data comes from the Centers for Disease Control.

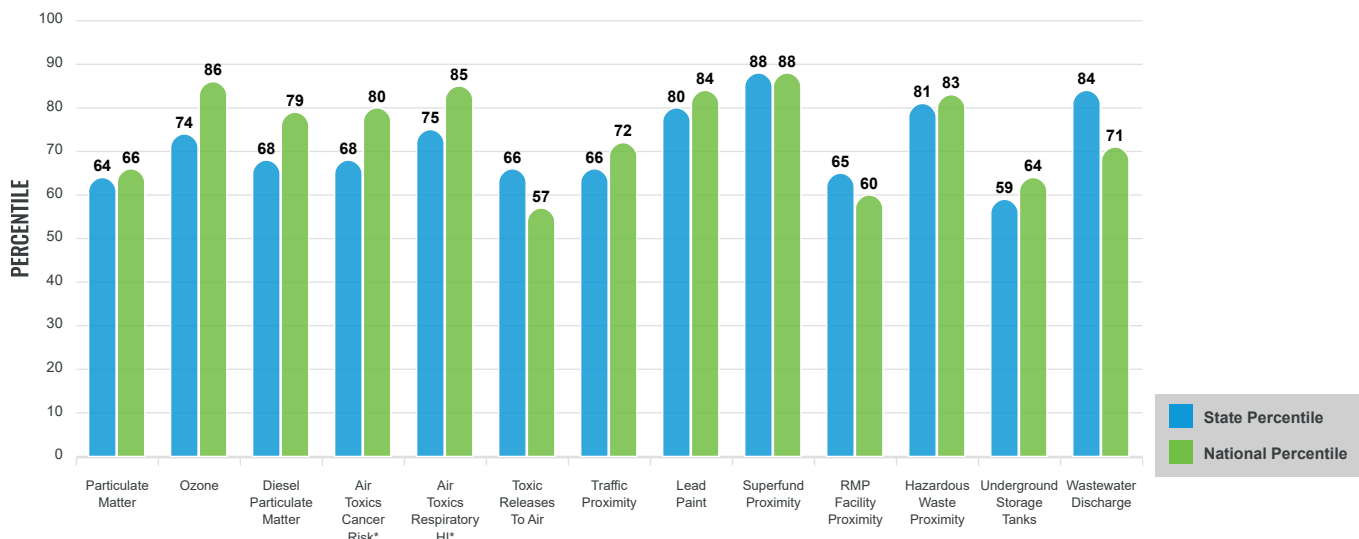
Environmental Justice & Supplemental Indexes

The environmental justice and supplemental indexes are a combination of environmental and socioeconomic information. There are thirteen EJ indexes and supplemental indexes in EJScreen reflecting the 13 environmental indicators. The indexes for a selected area are compared to those for all other locations in the state or nation. For more information and calculation details on the EJ and supplemental indexes, please visit the [EJScreen website](#).

EJ INDEXES

The EJ indexes help users screen for potential EJ concerns. To do this, the EJ index combines data on low income and people of color populations with a single environmental indicator.

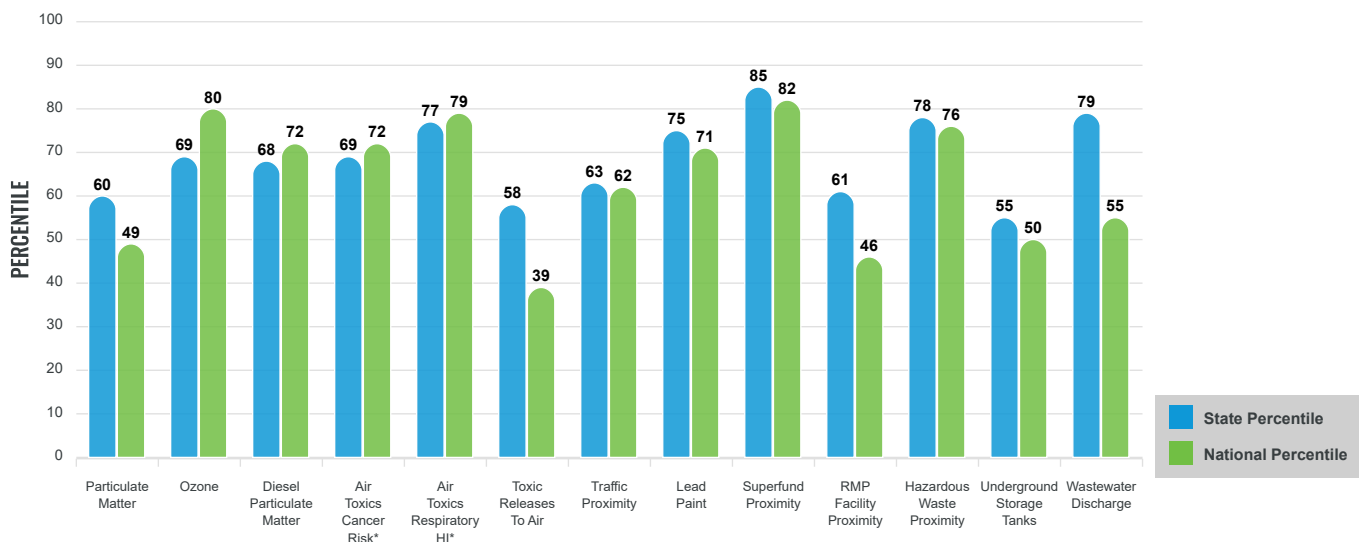
EJ INDEXES FOR THE SELECTED LOCATION



SUPPLEMENTAL INDEXES

The supplemental indexes offer a different perspective on community-level vulnerability. They combine data on percent low-income, percent linguistically isolated, percent less than high school education, percent unemployed, and low life expectancy with a single environmental indicator.

SUPPLEMENTAL INDEXES FOR THE SELECTED LOCATION



These percentiles provide perspective on how the selected block group or buffer area compares to the entire state or nation.

Report for Blockgroup: 240338074081

EJScreen Environmental and Socioeconomic Indicators Data

SELECTED VARIABLES	VALUE	STATE AVERAGE	PERCENTILE IN STATE	USA AVERAGE	PERCENTILE IN USA
POLLUTION AND SOURCES					
Particulate Matter ($\mu\text{g}/\text{m}^3$)	7.89	7.84	43	8.08	42
Ozone (ppb)	67.5	66	58	61.6	87
Diesel Particulate Matter ($\mu\text{g}/\text{m}^3$)	0.323	0.288	59	0.261	72
Air Toxics Cancer Risk* (lifetime risk per million)	30	28	18	25	52
Air Toxics Respiratory HI*	0.4	0.34	50	0.31	70
Toxic Releases to Air	200	430	45	4,600	32
Traffic Proximity (daily traffic count/distance to road)	100	180	52	210	58
Lead Paint (% Pre-1960 Housing)	0.54	0.32	74	0.3	76
Superfund Proximity (site count/km distance)	0.55	0.13	96	0.13	95
RMP Facility Proximity (facility count/km distance)	0.12	0.42	48	0.43	37
Hazardous Waste Proximity (facility count/km distance)	3.3	2.1	78	1.9	83
Underground Storage Tanks (count/km ²)	0.59	1.9	40	3.9	41
Wastewater Discharge (toxicity-weighted concentration/m distance)	0.001	1.2	68	22	49
SOCIOECONOMIC INDICATORS					
Demographic Index	47%	36%	67	35%	71
Supplemental Demographic Index	13%	12%	64	14%	51
People of Color	62%	49%	62	39%	73
Low Income	31%	22%	73	31%	57
Unemployment Rate	3%	6%	39	6%	40
Limited English Speaking Households	4%	3%	78	5%	73
Less Than High School Education	9%	10%	63	12%	56
Under Age 5	7%	6%	67	6%	67
Over Age 64	12%	16%	35	17%	33
Low Life Expectancy	17%	19%	26	20%	24

* Diesel particulate matter, air toxics cancer risk, and air toxics respiratory hazard index are from the EPA's Air Toxics Data Update, which is the Agency's ongoing, comprehensive evaluation of air toxics in the United States. This effort aims to prioritize air toxics, emission sources, and locations of interest for further study. It is important to remember that the air toxics data presented here provide broad estimates of health risks over geographic areas of the country, not definitive risks to specific individuals or locations. Cancer risks and hazard indices from the Air Toxics Data Update are reported to one significant figure and any additional significant figures here are due to rounding. More information on the Air Toxics Data Update can be found at: <https://www.epa.gov/haps/air-toxics-data-update>.

Sites reporting to EPA within defined area:

Superfund	1
Hazardous Waste, Treatment, Storage, and Disposal Facilities	3
Water Dischargers	7
Air Pollution	10
Brown fields	0
Toxic Release Inventory	1

Other community features within defined area:

Schools	1
Hospitals	0
Places of Worship	0

Other environmental data:

Air Non-attainment	Yes
Impaired Waters	Yes

Selected location contains American Indian Reservation Lands*	No
Selected location contains a "Justice40 (CEJST)" disadvantaged community	No
Selected location contains an EPA IRA disadvantaged community	No

Report for Blockgroup: 240338074081

EJScreen Environmental and Socioeconomic Indicators Data

HEALTH INDICATORS					
INDICATOR	HEALTH VALUE	STATE AVERAGE	STATE PERCENTILE	US AVERAGE	US PERCENTILE
Low Life Expectancy	17%	19%	26	20%	24
Heart Disease	4	5.3	19	6.1	12
Asthma	8.3	9.9	14	10	10
Cancer	5.8	6.1	46	6.1	41
Persons with Disabilities	11.1%	11.8%	52	13.4%	40

CLIMATE INDICATORS					
INDICATOR	HEALTH VALUE	STATE AVERAGE	STATE PERCENTILE	US AVERAGE	US PERCENTILE
Flood Risk	3%	7%	37	12%	27
Wild re Risk	0%	1%	0	14%	0

CRITICAL SERVICE GAPS					
INDICATOR	HEALTH VALUE	STATE AVERAGE	STATE PERCENTILE	US AVERAGE	US PERCENTILE
Broadband Internet	2%	11%	20	14%	15
Lack of Health Insurance	5%	6%	51	9%	33
Housing Burden	No	N/A	N/A	N/A	N/A
Transportation Access	Yes	N/A	N/A	N/A	N/A
Food Desert	Yes	N/A	N/A	N/A	N/A

Footnotes

Report for Blockgroup: 240338074081



EJScreen Community Report

This report provides environmental and socioeconomic information for user-defined areas, and combines that data into environmental justice and supplemental indexes.

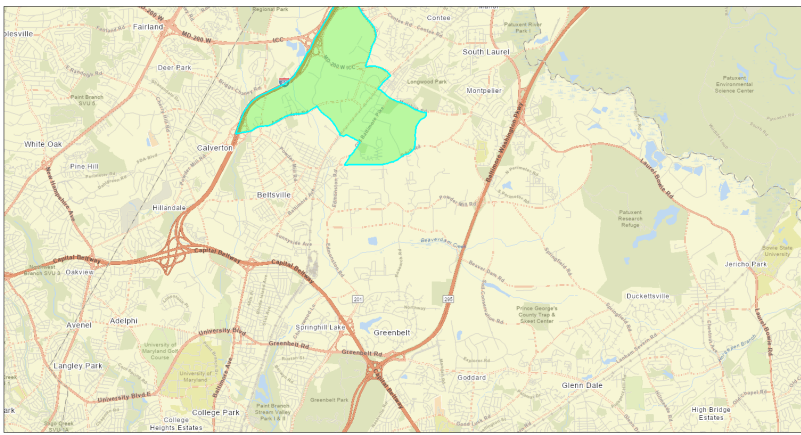
Beltsville, MD

Blockgroup: 240338074083

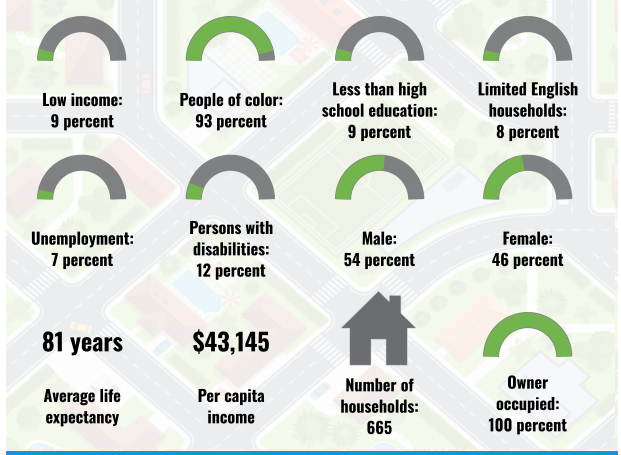
Population: 1,953

Area in square miles: 3.89

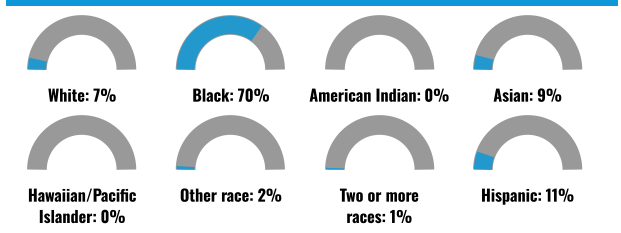
A3 Landscape



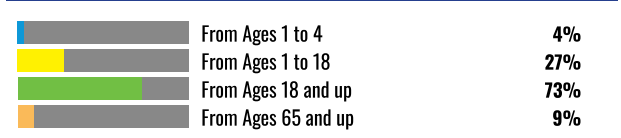
COMMUNITY INFORMATION



BREAKDOWN BY RACE



BREAKDOWN BY AGE



LIMITED ENGLISH SPEAKING BREAKDOWN



LANGUAGES SPOKEN AT HOME

LANGUAGE	PERCENT
English	82%
Spanish	6%
French, Haitian, or Cajun	1%
Other Indo-European	2%
Chinese (including Mandarin, Cantonese)	3%
Vietnamese	2%
Other Asian and Pacific Island	1%
Other and Unspecified	1%
Total Non-English	18%

Notes: Numbers may not sum to totals due to rounding. Hispanic population can be of any race. Source: U.S. Census Bureau, American Community Survey (ACS) 2017-2021. Life expectancy data comes from the Centers for Disease Control.

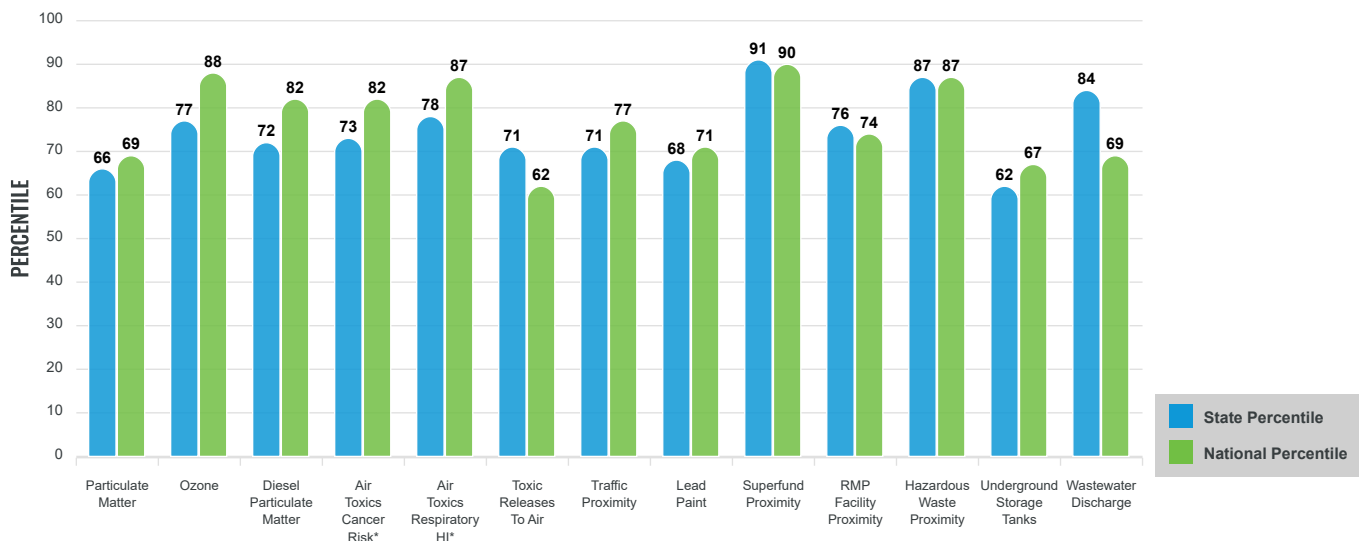
Environmental Justice & Supplemental Indexes

The environmental justice and supplemental indexes are a combination of environmental and socioeconomic information. There are thirteen EJ indexes and supplemental indexes in EJScreen reflecting the 13 environmental indicators. The indexes for a selected area are compared to those for all other locations in the state or nation. For more information and calculation details on the EJ and supplemental indexes, please visit the [EJScreen website](#).

EJ INDEXES

The EJ indexes help users screen for potential EJ concerns. To do this, the EJ index combines data on low income and people of color populations with a single environmental indicator.

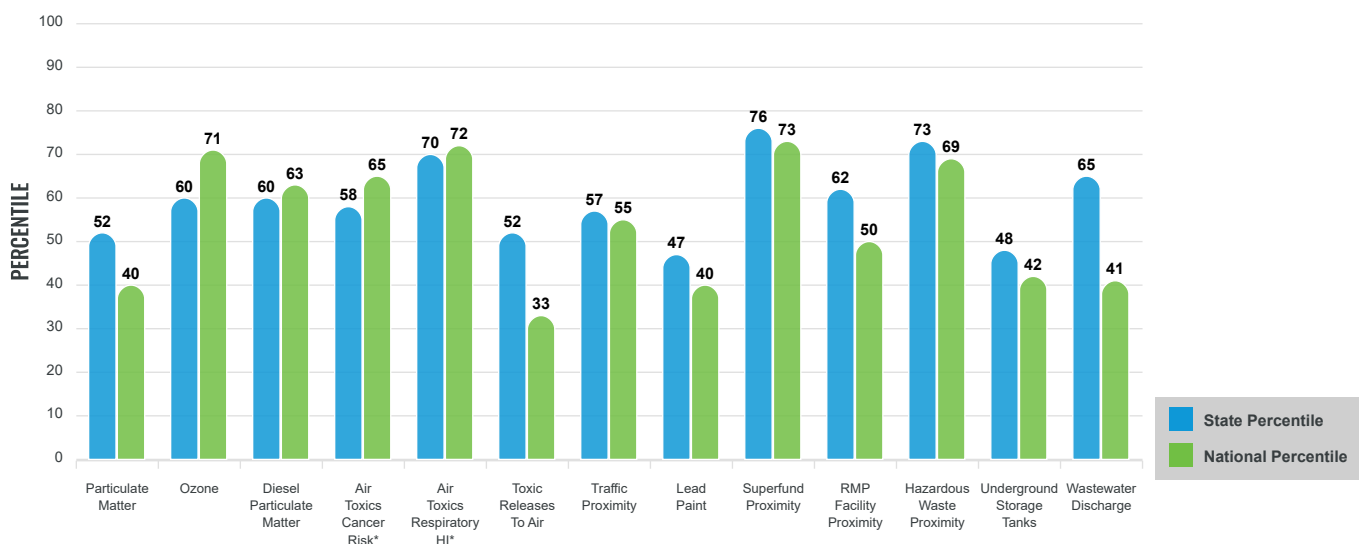
EJ INDEXES FOR THE SELECTED LOCATION



SUPPLEMENTAL INDEXES

The supplemental indexes offer a different perspective on community-level vulnerability. They combine data on percent low-income, percent linguistically isolated, percent less than high school education, percent unemployed, and low life expectancy with a single environmental indicator.

SUPPLEMENTAL INDEXES FOR THE SELECTED LOCATION



These percentiles provide perspective on how the selected block group or buffer area compares to the entire state or nation.

Report for Blockgroup: 240338074083

EJScreen Environmental and Socioeconomic Indicators Data

SELECTED VARIABLES	VALUE	STATE AVERAGE	PERCENTILE IN STATE	USA AVERAGE	PERCENTILE IN USA
POLLUTION AND SOURCES					
Particulate Matter ($\mu\text{g}/\text{m}^3$)	7.89	7.84	43	8.08	42
Ozone (ppb)	67.5	66	58	61.6	87
Diesel Particulate Matter ($\mu\text{g}/\text{m}^3$)	0.323	0.288	59	0.261	72
Air Toxics Cancer Risk* (lifetime risk per million)	30	28	18	25	52
Air Toxics Respiratory HI*	0.4	0.34	50	0.31	70
Toxic Releases to Air	240	430	48	4,600	34
Traffic Proximity (daily traffic count/distance to road)	120	180	56	210	62
Lead Paint (% Pre-1960 Housing)	0.16	0.32	43	0.3	44
Superfund Proximity (site count/km distance)	0.42	0.13	94	0.13	93
RMP Facility Proximity (facility count/km distance)	0.18	0.42	62	0.43	53
Hazardous Waste Proximity (facility count/km distance)	4.4	2.1	84	1.9	87
Underground Storage Tanks (count/km ²)	0.64	1.9	41	3.9	42
Wastewater Discharge (toxicity-weighted concentration/m distance)	0.00055	1.2	64	22	43
SOCIOECONOMIC INDICATORS					
Demographic Index	51%	36%	72	35%	75
Supplemental Demographic Index	10%	12%	49	14%	35
People of Color	93%	49%	84	39%	90
Low Income	9%	22%	29	31%	16
Unemployment Rate	7%	6%	74	6%	72
Limited English Speaking Households	8%	3%	87	5%	81
Less Than High School Education	9%	10%	62	12%	55
Under Age 5	4%	6%	41	6%	42
Over Age 64	9%	16%	22	17%	22
Low Life Expectancy	17%	19%	26	20%	24

*Diesel particulate matter, air toxics cancer risk, and air toxics respiratory hazard index are from the EPA's Air Toxics Data Update, which is the Agency's ongoing, comprehensive evaluation of air toxics in the United States. This effort aims to prioritize air toxics, emission sources, and locations of interest for further study. It is important to remember that the air toxics data presented here provide broad estimates of health risks over geographic areas of the country, not definitive risks to specific individuals or locations. Cancer risks and hazard indices from the Air Toxics Data Update are reported to one significant figure and any additional significant figures here are due to rounding. More information on the Air Toxics Data Update can be found at: <https://www.epa.gov/haps/air-toxics-data-update>.

Sites reporting to EPA within defined area:

Superfund	0
Hazardous Waste, Treatment, Storage, and Disposal Facilities	2
Water Dischargers	14
Air Pollution	27
Brown fields	1
Toxic Release Inventory	3

Other community features within defined area:

Schools	1
Hospitals	0
Places of Worship	1

Other environmental data:

Air Non-attainment	Yes
Impaired Waters	Yes

Selected location contains American Indian Reservation Lands*	No
Selected location contains a "Justice40 (CEJST)" disadvantaged community	No
Selected location contains an EPA IRA disadvantaged community	No

Report for Blockgroup: 240338074083

EJScreen Environmental and Socioeconomic Indicators Data

HEALTH INDICATORS					
INDICATOR	HEALTH VALUE	STATE AVERAGE	STATE PERCENTILE	US AVERAGE	US PERCENTILE
Low Life Expectancy	17%	19%	26	20%	24
Heart Disease	4	5.3	19	6.1	12
Asthma	8.3	9.9	14	10	10
Cancer	5.8	6.1	46	6.1	41
Persons with Disabilities	11.1%	11.8%	52	13.4%	40

CLIMATE INDICATORS					
INDICATOR	HEALTH VALUE	STATE AVERAGE	STATE PERCENTILE	US AVERAGE	US PERCENTILE
Flood Risk	6%	7%	62	12%	45
Wild re Risk	0%	1%	0	14%	0

CRITICAL SERVICE GAPS					
INDICATOR	HEALTH VALUE	STATE AVERAGE	STATE PERCENTILE	US AVERAGE	US PERCENTILE
Broadband Internet	5%	11%	37	14%	27
Lack of Health Insurance	5%	6%	51	9%	33
Housing Burden	No	N/A	N/A	N/A	N/A
Transportation Access	Yes	N/A	N/A	N/A	N/A
Food Desert	No	N/A	N/A	N/A	N/A

Footnotes

Report for Blockgroup: 240338074083



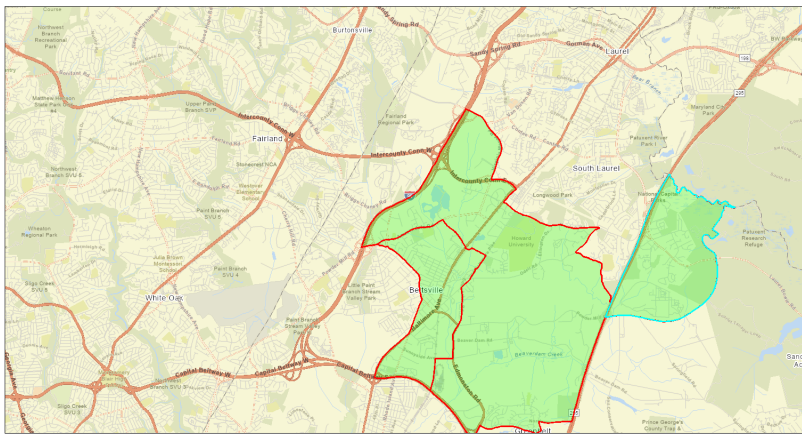
EJScreen Community Report

This report provides environmental and socioeconomic information for user-defined areas, and combines that data into environmental justice and supplemental indexes.

South Laurel, MD

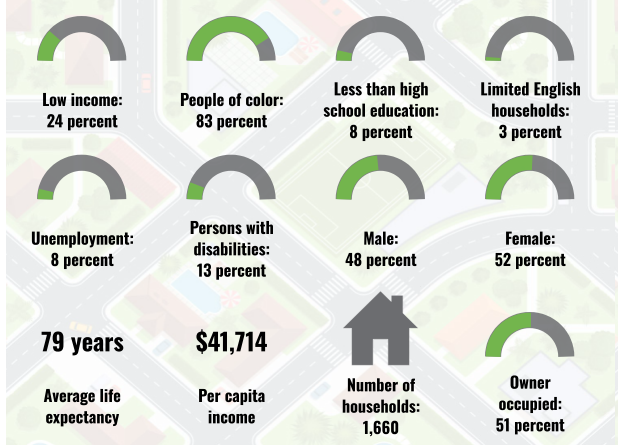
Tract: 24033800206
 Population: 4,041
 Area in square miles: 3.07

A3 Landscape

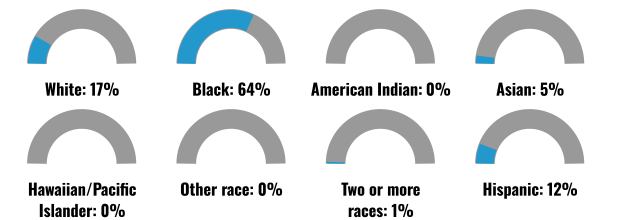


January 9, 2024
 Legend: Project 3 (green), Project 2 (orange), Project 1 (red)
 Scale: 0 to 4 km / 0 to 2 mi
 Source: MANGRO, UNICRIG, VON, Ent, Berlin, Garm, Zilbergh, Sachthofer, H. SETHI/KA, USGS, EPA, NPS, USDA, USFWS

COMMUNITY INFORMATION



BREAKDOWN BY RACE



BREAKDOWN BY AGE



LANGUAGES SPOKEN AT HOME

LANGUAGE	PERCENT
English	79%
Spanish	11%
French, Haitian, or Cajun	3%
Other Indo-European	1%
Tagalog (including Filipino)	1%
Other and Unspecified	4%
Total Non-English	21%

LIMITED ENGLISH SPEAKING BREAKDOWN



Notes: Numbers may not sum to totals due to rounding. Hispanic population can be of any race. Source: U.S. Census Bureau, American Community Survey (ACS) 2017-2021. Life expectancy data comes from the Centers for Disease Control.

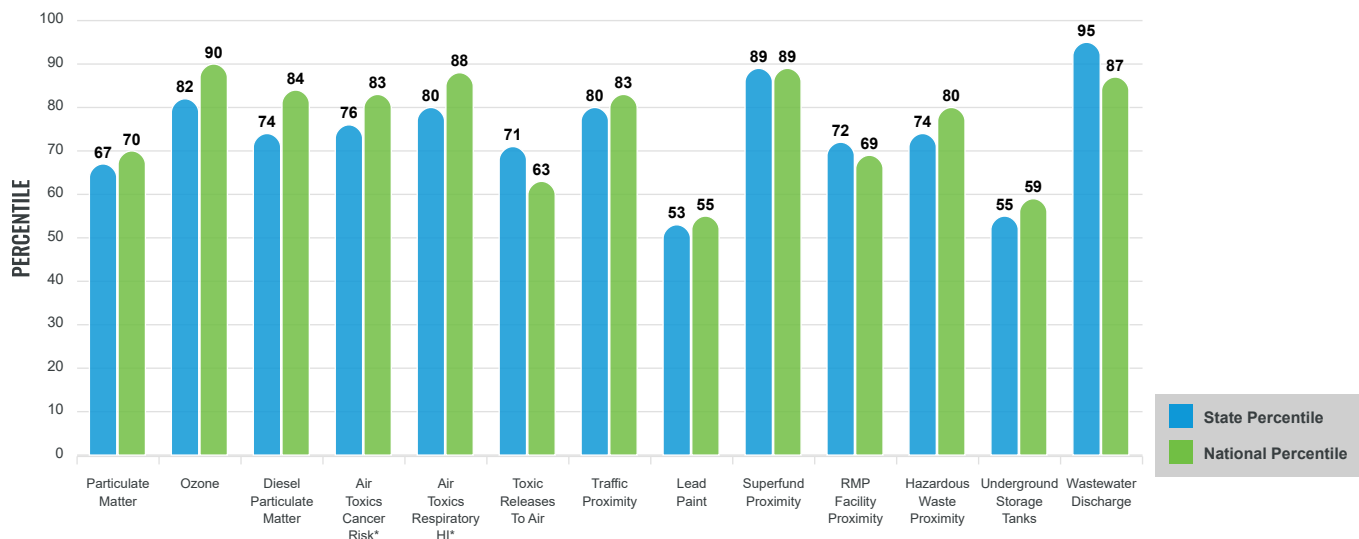
Environmental Justice & Supplemental Indexes

The environmental justice and supplemental indexes are a combination of environmental and socioeconomic information. There are thirteen EJ indexes and supplemental indexes in EJScreen reflecting the 13 environmental indicators. The indexes for a selected area are compared to those for all other locations in the state or nation. For more information and calculation details on the EJ and supplemental indexes, please visit the [EJScreen website](#).

EJ INDEXES

The EJ indexes help users screen for potential EJ concerns. To do this, the EJ index combines data on low income and people of color populations with a single environmental indicator.

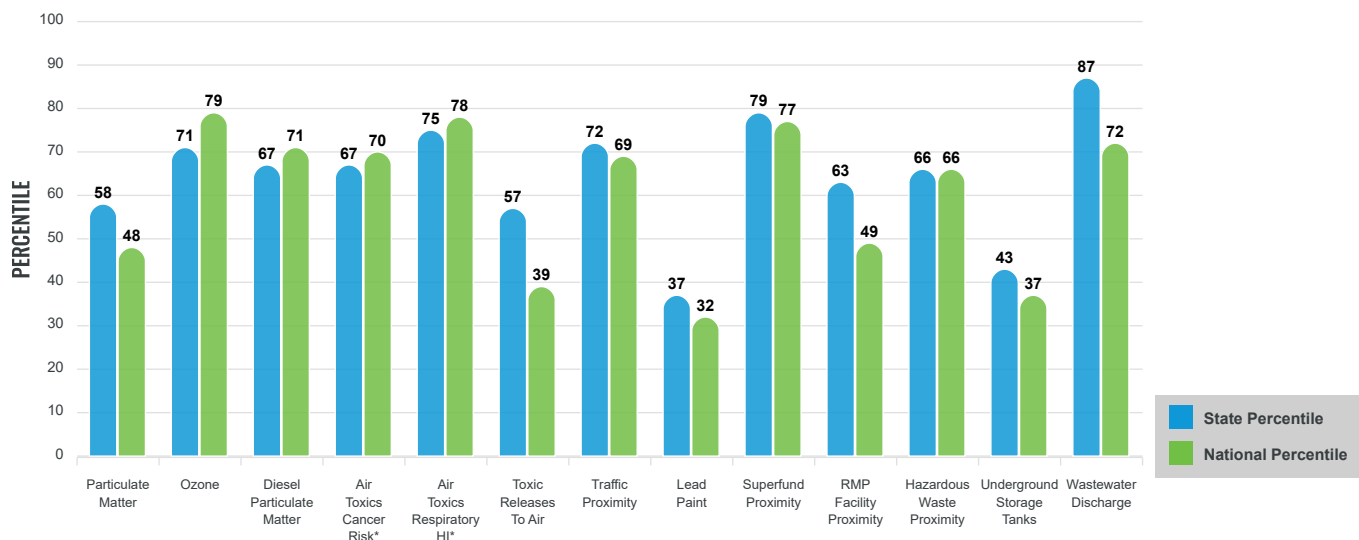
EJ INDEXES FOR THE SELECTED LOCATION



SUPPLEMENTAL INDEXES

The supplemental indexes offer a different perspective on community-level vulnerability. They combine data on percent low-income, percent linguistically isolated, percent less than high school education, percent unemployed, and low life expectancy with a single environmental indicator.

SUPPLEMENTAL INDEXES FOR THE SELECTED LOCATION



These percentiles provide perspective on how the selected block group or buffer area compares to the entire state or nation.

Report for Tract: 24033800206

EJScreen Environmental and Socioeconomic Indicators Data

SELECTED VARIABLES	VALUE	STATE AVERAGE	PERCENTILE IN STATE	USA AVERAGE	PERCENTILE IN USA
POLLUTION AND SOURCES					
Particulate Matter ($\mu\text{g}/\text{m}^3$)	7.88	7.84	42	8.08	42
Ozone (ppb)	68.2	66	64	61.6	89
Diesel Particulate Matter ($\mu\text{g}/\text{m}^3$)	0.326	0.288	60	0.261	73
Air Toxics Cancer Risk* (lifetime risk per million)	30	28	18	25	52
Air Toxics Respiratory HI*	0.4	0.34	50	0.31	70
Toxic Releases to Air	210	430	46	4,600	33
Traffic Proximity (daily traffic count/distance to road)	250	180	76	210	79
Lead Paint (% Pre-1960 Housing)	0.065	0.32	26	0.3	29
Superfund Proximity (site count/km distance)	0.2	0.13	85	0.13	85
RMP Facility Proximity (facility count/km distance)	0.14	0.42	54	0.43	44
Hazardous Waste Proximity (facility count/km distance)	1.3	2.1	56	1.9	65
Underground Storage Tanks (count/km ²)	0.64	1.9	42	3.9	42
Wastewater Discharge (toxicity-weighted concentration/m distance)	0.049	1.2	90	22	78
SOCIOECONOMIC INDICATORS					
Demographic Index	54%	36%	76	35%	77
Supplemental Demographic Index	12%	12%	61	14%	48
People of Color	83%	49%	76	39%	85
Low Income	24%	22%	61	31%	44
Unemployment Rate	8%	6%	78	6%	76
Limited English Speaking Households	3%	3%	74	5%	70
Less Than High School Education	8%	10%	53	12%	48
Under Age 5	3%	6%	26	6%	27
Over Age 64	9%	16%	23	17%	22
Low Life Expectancy	19%	19%	48	20%	42

*Diesel particulate matter, air toxics cancer risk, and air toxics respiratory hazard index are from the EPA's Air Toxics Data Update, which is the Agency's ongoing, comprehensive evaluation of air toxics in the United States. This effort aims to prioritize air toxics, emission sources, and locations of interest for further study. It is important to remember that the air toxics data presented here provide broad estimates of health risks over geographic areas of the country, not definitive risks to specific individuals or locations. Cancer risks and hazard indices from the Air Toxics Data Update are reported to one significant figure and any additional significant figures here are due to rounding. More information on the Air Toxics Data Update can be found at: <https://www.epa.gov/haps/air-toxics-data-update>.

Sites reporting to EPA within defined area:

Superfund	0
Hazardous Waste, Treatment, Storage, and Disposal Facilities	0
Water Dischargers	5
Air Pollution	3
Brown fields	0
Toxic Release Inventory	0

Other community features within defined area:

Schools	0
Hospitals	0
Places of Worship	1

Other environmental data:

Air Non-attainment	Yes
Impaired Waters	Yes

Selected location contains American Indian Reservation Lands*	No
Selected location contains a "Justice40 (CEJST)" disadvantaged community	No
Selected location contains an EPA IRA disadvantaged community	Yes

Report for Tract: 24033800206

EJScreen Environmental and Socioeconomic Indicators Data

HEALTH INDICATORS					
INDICATOR	HEALTH VALUE	STATE AVERAGE	STATE PERCENTILE	US AVERAGE	US PERCENTILE
Low Life Expectancy	19%	19%	48	20%	42
Heart Disease	3.1	5.3	6	6.1	4
Asthma	9.7	9.9	52	10	46
Cancer	4	6.1	10	6.1	11
Persons with Disabilities	12.3%	11.8%	61	13.4%	48

CLIMATE INDICATORS					
INDICATOR	HEALTH VALUE	STATE AVERAGE	STATE PERCENTILE	US AVERAGE	US PERCENTILE
Flood Risk	1%	7%	20	12%	16
Wild re Risk	0%	1%	0	14%	0

CRITICAL SERVICE GAPS					
INDICATOR	HEALTH VALUE	STATE AVERAGE	STATE PERCENTILE	US AVERAGE	US PERCENTILE
Broadband Internet	9%	11%	53	14%	41
Lack of Health Insurance	8%	6%	78	9%	59
Housing Burden	Yes	N/A	N/A	N/A	N/A
Transportation Access	Yes	N/A	N/A	N/A	N/A
Food Desert	No	N/A	N/A	N/A	N/A

Footnotes

Report for Tract: 24033800206



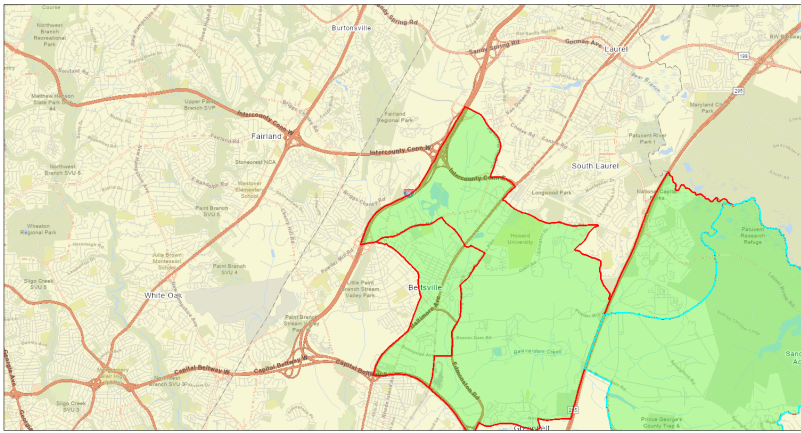
EJScreen Community Report

This report provides environmental and socioeconomic information for user-defined areas, and combines that data into environmental justice and supplemental indexes.

Glenn Dale, MD

Tract: 24033800411
 Population: 4,448
 Area in square miles: 13.40

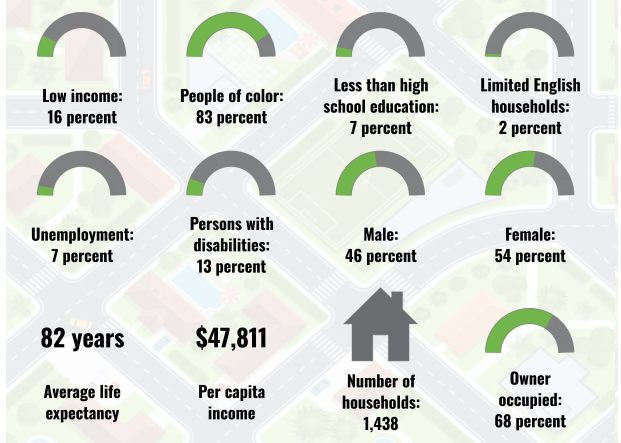
A3 Landscape



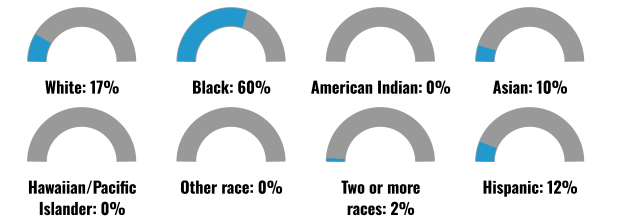
LANGUAGES SPOKEN AT HOME

LANGUAGE	PERCENT
English	65%
Spanish	8%
Russian, Polish, or Other Slavic	1%
Other Indo-European	3%
Korean	1%
Tagalog (including Filipino)	1%
Other Asian and Pacific Island	4%
Other and Unspecified	16%
Total Non-English	35%

COMMUNITY INFORMATION



BREAKDOWN BY RACE



BREAKDOWN BY AGE



LIMITED ENGLISH SPEAKING BREAKDOWN



Notes: Numbers may not sum to totals due to rounding. Hispanic population can be of any race. Source: U.S. Census Bureau, American Community Survey (ACS) 2017-2021. Life expectancy data comes from the Centers for Disease Control.

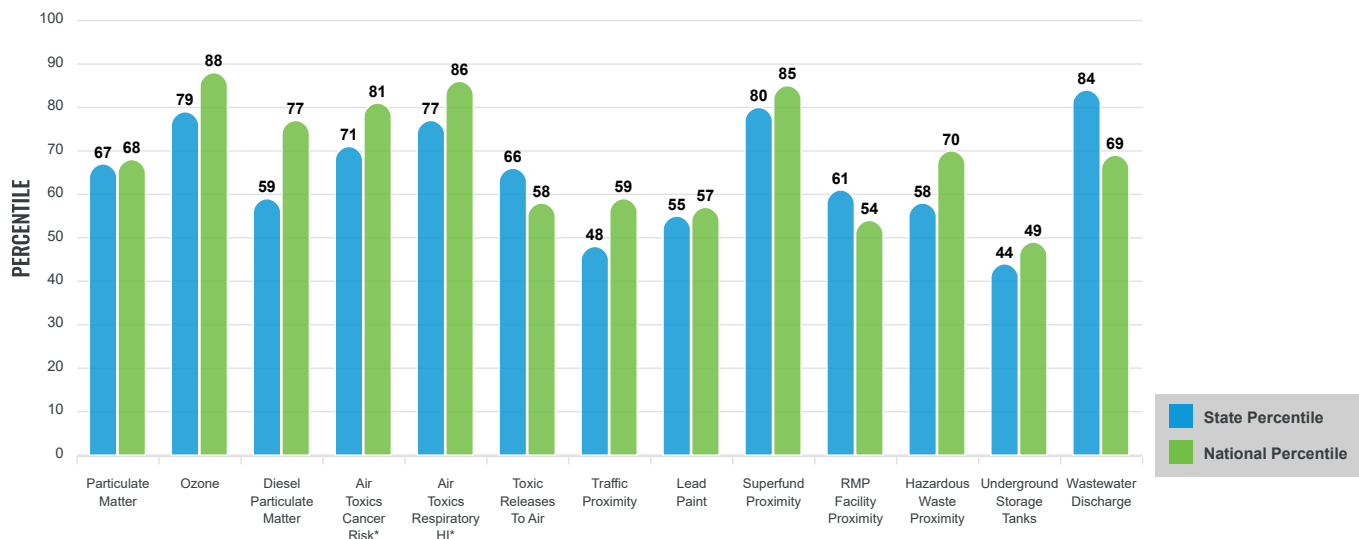
Environmental Justice & Supplemental Indexes

The environmental justice and supplemental indexes are a combination of environmental and socioeconomic information. There are thirteen EJ indexes and supplemental indexes in EJScreen reflecting the 13 environmental indicators. The indexes for a selected area are compared to those for all other locations in the state or nation. For more information and calculation details on the EJ and supplemental indexes, please visit the [EJScreen website](#).

EJ INDEXES

The EJ indexes help users screen for potential EJ concerns. To do this, the EJ index combines data on low income and people of color populations with a single environmental indicator.

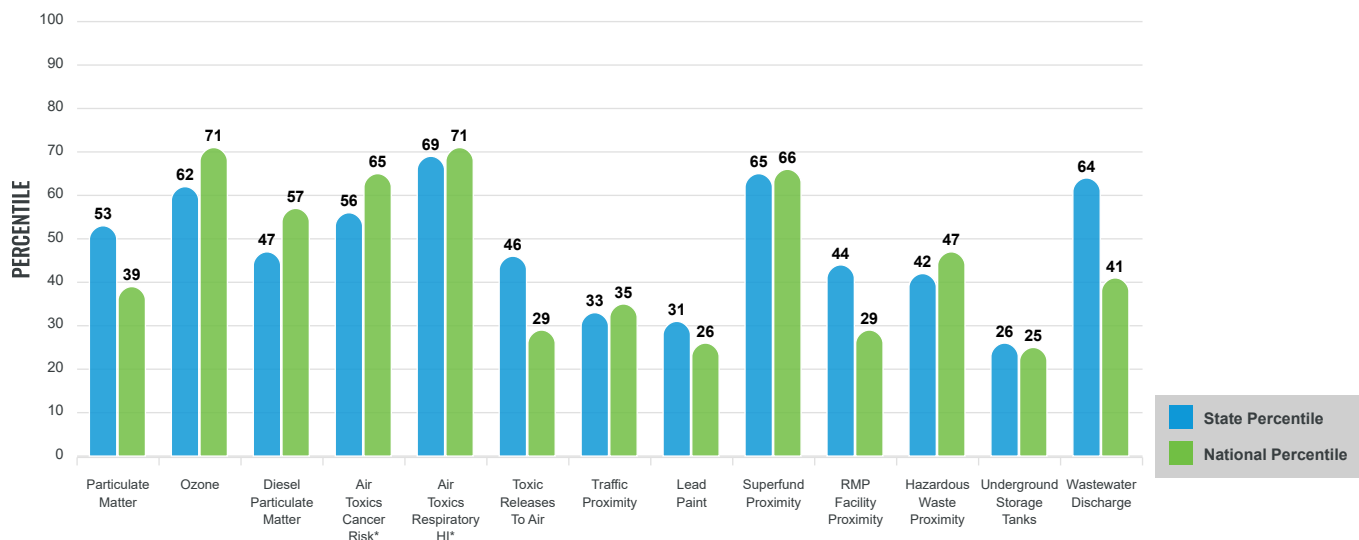
EJ INDEXES FOR THE SELECTED LOCATION



SUPPLEMENTAL INDEXES

The supplemental indexes offer a different perspective on community-level vulnerability. They combine data on percent low-income, percent linguistically isolated, percent less than high school education, percent unemployed, and low life expectancy with a single environmental indicator.

SUPPLEMENTAL INDEXES FOR THE SELECTED LOCATION



These percentiles provide perspective on how the selected block group or buffer area compares to the entire state or nation.

Report for Tract: 24033800411

EJScreen Environmental and Socioeconomic Indicators Data

SELECTED VARIABLES	VALUE	STATE AVERAGE	PERCENTILE IN STATE	USA AVERAGE	PERCENTILE IN USA
POLLUTION AND SOURCES					
Particulate Matter (µg/m ³)	7.91	7.84	46	8.08	42
Ozone (ppb)	68.1	66	63	61.6	89
Diesel Particulate Matter (µg/m ³)	0.267	0.288	40	0.261	62
Air Toxics Cancer Risk* (lifetime risk per million)	30	28	18	25	52
Air Toxics Respiratory HI*	0.4	0.34	50	0.31	70
Toxic Releases to Air	180	430	42	4,600	30
Traffic Proximity (daily traffic count/distance to road)	43	180	29	210	37
Lead Paint (% Pre-1960 Housing)	0.082	0.32	30	0.3	32
Superfund Proximity (site count/km distance)	0.14	0.13	74	0.13	77
RMP Facility Proximity (facility count/km distance)	0.099	0.42	39	0.43	29
Hazardous Waste Proximity (facility count/km distance)	0.58	2.1	39	1.9	52
Underground Storage Tanks (count/km ²)	0.15	1.9	27	3.9	30
Wastewater Discharge (toxicity-weighted concentration/m distance)	0.00066	1.2	65	22	45
SOCIOECONOMIC INDICATORS					
Demographic Index	50%	36%	70	35%	74
Supplemental Demographic Index	10%	12%	47	14%	33
People of Color	83%	49%	76	39%	85
Low Income	16%	22%	47	31%	30
Unemployment Rate	7%	6%	72	6%	70
Limited English Speaking Households	2%	3%	67	5%	65
Less Than High School Education	7%	10%	53	12%	48
Under Age 5	5%	6%	50	6%	51
Over Age 64	22%	16%	75	17%	72
Low Life Expectancy	16%	19%	18	20%	15

* Diesel particulate matter, air toxics cancer risk, and air toxics respiratory hazard index are from the EPA's Air Toxics Data Update, which is the Agency's ongoing, comprehensive evaluation of air toxics in the United States. This effort aims to prioritize air toxics, emission sources, and locations of interest for further study. It is important to remember that the air toxics data presented here provide broad estimates of health risks over geographic areas of the country, not definitive risks to specific individuals or locations. Cancer risks and hazard indices from the Air Toxics Data Update are reported to one significant figure and any additional significant figures here are due to rounding. More information on the Air Toxics Data Update can be found at: <https://www.epa.gov/haps/air-toxics-data-update>.

Sites reporting to EPA within defined area:

Superfund	0
Hazardous Waste, Treatment, Storage, and Disposal Facilities	1
Water Dischargers	5
Air Pollution	7
Brown fields	0
Toxic Release Inventory	2

Other community features within defined area:

Schools	0
Hospitals	0
Places of Worship	7

Other environmental data:

Air Non-attainment	Yes
Impaired Waters	Yes

Selected location contains American Indian Reservation Lands*	No
Selected location contains a "Justice40 (CEJST)" disadvantaged community	No
Selected location contains an EPA IRA disadvantaged community	No

Report for Tract: 24033800411

EJScreen Environmental and Socioeconomic Indicators Data

HEALTH INDICATORS					
INDICATOR	HEALTH VALUE	STATE AVERAGE	STATE PERCENTILE	US AVERAGE	US PERCENTILE
Low Life Expectancy	16%	19%	18	20%	15
Heart Disease	4	5.3	19	6.1	12
Asthma	9.3	9.9	38	10	33
Cancer	4.8	6.1	23	6.1	22
Persons with Disabilities	12.2%	11.8%	61	13.4%	48

CLIMATE INDICATORS					
INDICATOR	HEALTH VALUE	STATE AVERAGE	STATE PERCENTILE	US AVERAGE	US PERCENTILE
Flood Risk	5%	7%	55	12%	39
Wild re Risk	0%	1%	0	14%	0

CRITICAL SERVICE GAPS					
INDICATOR	HEALTH VALUE	STATE AVERAGE	STATE PERCENTILE	US AVERAGE	US PERCENTILE
Broadband Internet	1%	11%	17	14%	13
Lack of Health Insurance	10%	6%	86	9%	70
Housing Burden	No	N/A	N/A	N/A	N/A
Transportation Access	Yes	N/A	N/A	N/A	N/A
Food Desert	No	N/A	N/A	N/A	N/A

Footnotes

Report for Tract: 24033800411



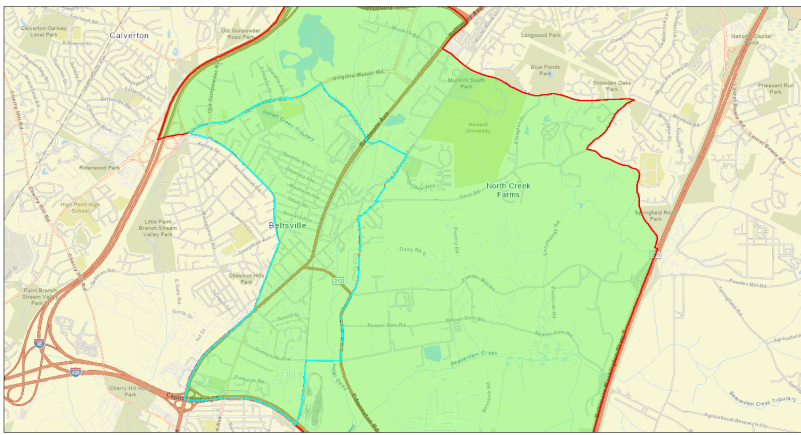
EJScreen Community Report

This report provides environmental and socioeconomic information for user-defined areas, and combines that data into environmental justice and supplemental indexes.

Beltsville, MD

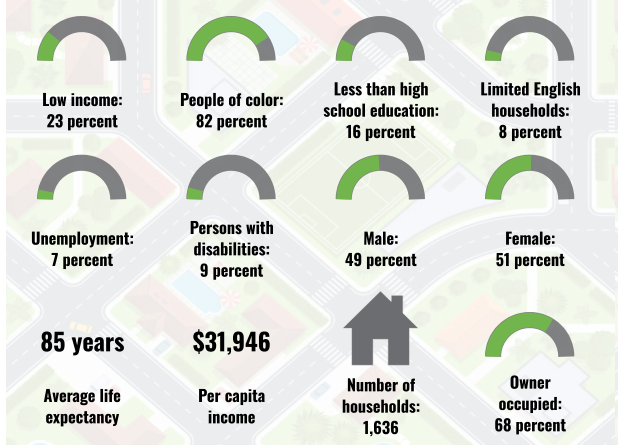
Tract: 24033807404
 Population: 5,712
 Area in square miles: 2.59

A3 Landscape

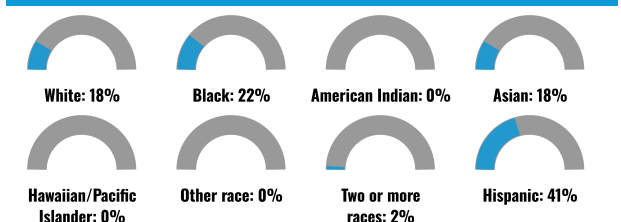


January 9, 2024
 Legend: Project 2 (Green), Project 1 (Red)
 Scale: 0 to 1.4 miles / 0 to 2 kilometers
MAPS: UNCHIC, VON, Elm, Berlin, Germ, Salford, Westborough, IL, METCAL, USGS, EPA, NPS, US Census Bureau, USDA, USFWS

COMMUNITY INFORMATION



BREAKDOWN BY RACE



BREAKDOWN BY AGE



LIMITED ENGLISH SPEAKING BREAKDOWN



LANGUAGES SPOKEN AT HOME

LANGUAGE	PERCENT
English	37%
Spanish	36%
French, Haitian, or Cajun	1%
Russian, Polish, or Other Slavic	1%
Other Indo-European	8%
Korean	1%
Chinese (including Mandarin, Cantonese)	4%
Tagalog (including Filipino)	1%
Other Asian and Pacific Island	5%
Arabic	1%
Other and Unspecified	4%
Total Non-English	63%

Notes: Numbers may not sum to totals due to rounding. Hispanic population can be of any race. Source: U.S. Census Bureau, American Community Survey (ACS) 2017-2021. Life expectancy data comes from the Centers for Disease Control.

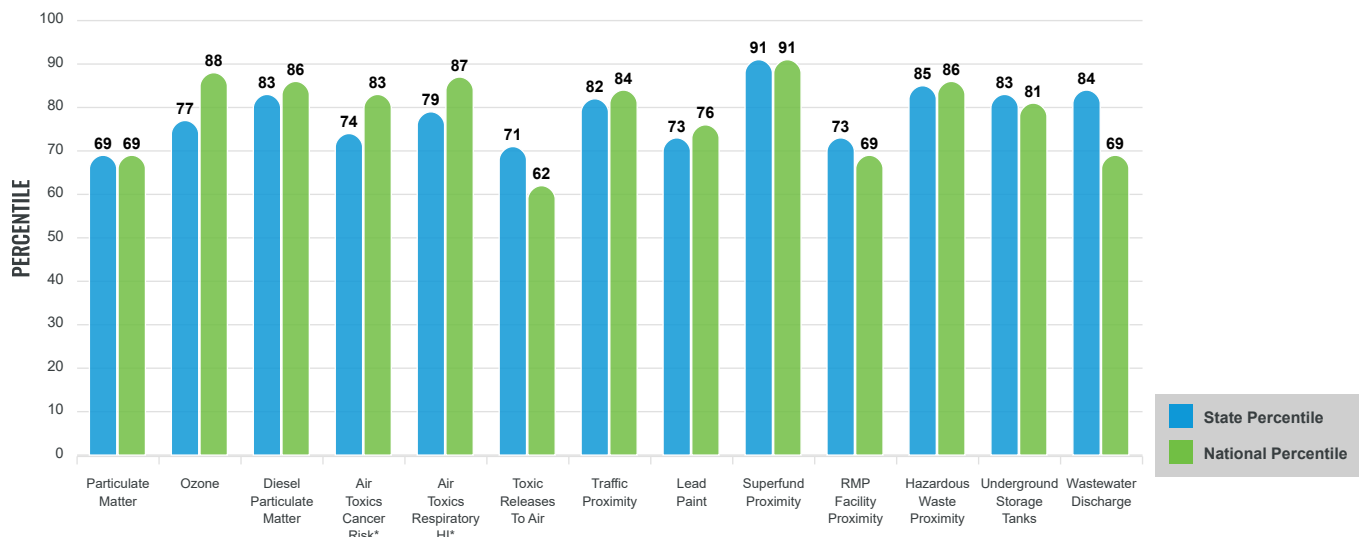
Environmental Justice & Supplemental Indexes

The environmental justice and supplemental indexes are a combination of environmental and socioeconomic information. There are thirteen EJ indexes and supplemental indexes in EJScreen reflecting the 13 environmental indicators. The indexes for a selected area are compared to those for all other locations in the state or nation. For more information and calculation details on the EJ and supplemental indexes, please visit the [EJScreen website](#).

EJ INDEXES

The EJ indexes help users screen for potential EJ concerns. To do this, the EJ index combines data on low income and people of color populations with a single environmental indicator.

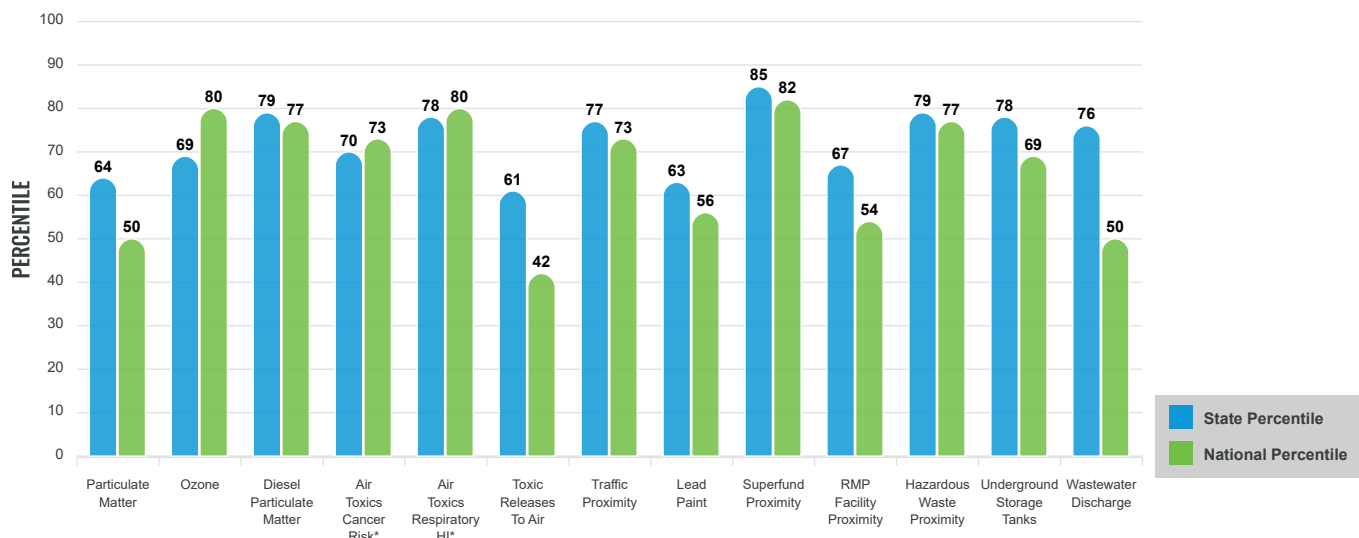
EJ INDEXES FOR THE SELECTED LOCATION



SUPPLEMENTAL INDEXES

The supplemental indexes offer a different perspective on community-level vulnerability. They combine data on percent low-income, percent linguistically isolated, percent less than high school education, percent unemployed, and low life expectancy with a single environmental indicator.

SUPPLEMENTAL INDEXES FOR THE SELECTED LOCATION



These percentiles provide perspective on how the selected block group or buffer area compares to the entire state or nation.

Report for Tract: 24033807404

EJScreen Environmental and Socioeconomic Indicators Data

SELECTED VARIABLES	VALUE	STATE AVERAGE	PERCENTILE IN STATE	USA AVERAGE	PERCENTILE IN USA
POLLUTION AND SOURCES					
Particulate Matter ($\mu\text{g}/\text{m}^3$)	7.91	7.84	47	8.08	42
Ozone (ppb)	67.1	66	56	61.6	85
Diesel Particulate Matter ($\mu\text{g}/\text{m}^3$)	0.389	0.288	80	0.261	82
Air Toxics Cancer Risk* (lifetime risk per million)	30	28	18	25	52
Air Toxics Respiratory HI*	0.4	0.34	50	0.31	70
Toxic Releases to Air	220	430	47	4,600	33
Traffic Proximity (daily traffic count/distance to road)	530	180	92	210	91
Lead Paint (% Pre-1960 Housing)	0.24	0.32	52	0.3	52
Superfund Proximity (site count/km distance)	0.38	0.13	94	0.13	93
RMP Facility Proximity (facility count/km distance)	0.15	0.42	55	0.43	45
Hazardous Waste Proximity (facility count/km distance)	3.5	2.1	79	1.9	83
Underground Storage Tanks (count/km ²)	3.7	1.9	81	3.9	71
Wastewater Discharge (toxicity-weighted concentration/m distance)	0.00046	1.2	62	22	42
SOCIOECONOMIC INDICATORS					
Demographic Index	52%	36%	74	35%	76
Supplemental Demographic Index	13%	12%	66	14%	53
People of Color	82%	49%	75	39%	84
Low Income	23%	22%	59	31%	42
Unemployment Rate	7%	6%	74	6%	72
Limited English Speaking Households	8%	3%	87	5%	81
Less Than High School Education	16%	10%	82	12%	75
Under Age 5	9%	6%	82	6%	83
Over Age 64	8%	16%	18	17%	18
Low Life Expectancy	13%	19%	5	20%	3

* Diesel particulate matter, air toxics cancer risk, and air toxics respiratory hazard index are from the EPA's Air Toxics Data Update, which is the Agency's ongoing, comprehensive evaluation of air toxics in the United States. This effort aims to prioritize air toxics, emission sources, and locations of interest for further study. It is important to remember that the air toxics data presented here provide broad estimates of health risks over geographic areas of the country, not definitive risks to specific individuals or locations. Cancer risks and hazard indices from the Air Toxics Data Update are reported to one significant figure and any additional significant figures here are due to rounding. More information on the Air Toxics Data Update can be found at: <https://www.epa.gov/haps/air-toxics-data-update>.

Sites reporting to EPA within defined area:

Superfund	0
Hazardous Waste, Treatment, Storage, and Disposal Facilities	1
Water Dischargers	30
Air Pollution	60
Brown fields	0
Toxic Release Inventory	2

Other community features within defined area:

Schools	1
Hospitals	0
Places of Worship	4

Other environmental data:

Air Non-attainment	Yes
Impaired Waters	Yes

Selected location contains American Indian Reservation Lands*	No
Selected location contains a "Justice40 (CEJST)" disadvantaged community	No
Selected location contains an EPA IRA disadvantaged community	Yes

Report for Tract: 24033807404

EJScreen Environmental and Socioeconomic Indicators Data

HEALTH INDICATORS					
INDICATOR	HEALTH VALUE	STATE AVERAGE	STATE PERCENTILE	US AVERAGE	US PERCENTILE
Low Life Expectancy	13%	19%	5	20%	3
Heart Disease	4.1	5.3	21	6.1	13
Asthma	8.6	9.9	19	10	15
Cancer	4.5	6.1	18	6.1	18
Persons with Disabilities	7.8%	11.8%	25	13.4%	17

CLIMATE INDICATORS					
INDICATOR	HEALTH VALUE	STATE AVERAGE	STATE PERCENTILE	US AVERAGE	US PERCENTILE
Flood Risk	13%	7%	88	12%	74
Wild re Risk	0%	1%	0	14%	0

CRITICAL SERVICE GAPS					
INDICATOR	HEALTH VALUE	STATE AVERAGE	STATE PERCENTILE	US AVERAGE	US PERCENTILE
Broadband Internet	7%	11%	44	14%	34
Lack of Health Insurance	21%	6%	97	9%	93
Housing Burden	No	N/A	N/A	N/A	N/A
Transportation Access	Yes	N/A	N/A	N/A	N/A
Food Desert	Yes	N/A	N/A	N/A	N/A

Footnotes

Report for Tract: 24033807404



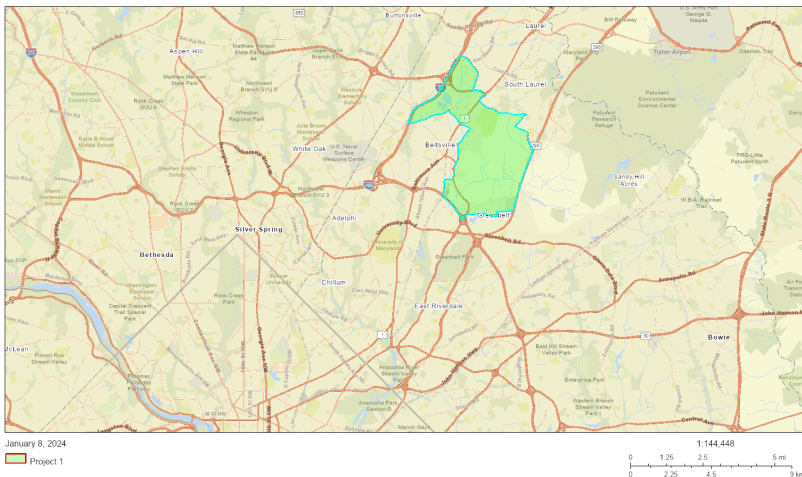
EJScreen Community Report

This report provides environmental and socioeconomic information for user-defined areas, and combines that data into environmental justice and supplemental indexes.

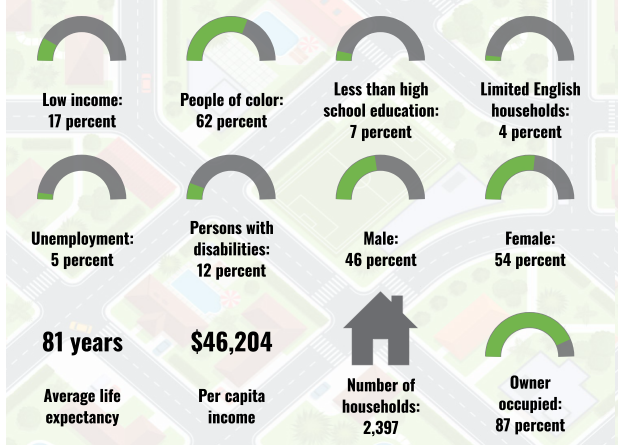
Beltsville, MD

Tract: 24033807408
 Population: 5,883
 Area in square miles: 11.01

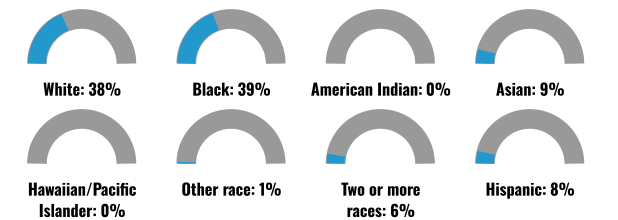
A3 Landscape



COMMUNITY INFORMATION



BREAKDOWN BY RACE



BREAKDOWN BY AGE



LIMITED ENGLISH SPEAKING BREAKDOWN



LANGUAGES SPOKEN AT HOME

LANGUAGE	PERCENT
English	82%
Spanish	6%
French, Haitian, or Cajun	1%
Other Indo-European	2%
Chinese (including Mandarin, Cantonese)	3%
Vietnamese	2%
Other Asian and Pacific Island	1%
Other and Unspecified	1%
Total Non-English	18%

Notes: Numbers may not sum to totals due to rounding. Hispanic population can be of any race. Source: U.S. Census Bureau, American Community Survey (ACS) 2017-2021. Life expectancy data comes from the Centers for Disease Control.

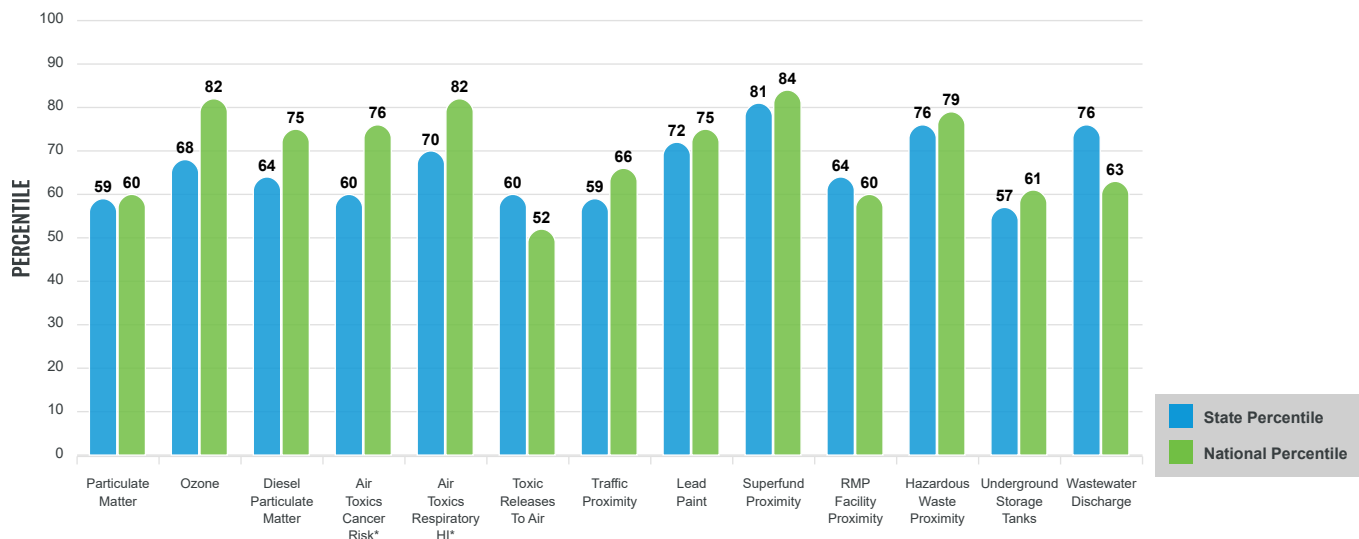
Environmental Justice & Supplemental Indexes

The environmental justice and supplemental indexes are a combination of environmental and socioeconomic information. There are thirteen EJ indexes and supplemental indexes in EJScreen reflecting the 13 environmental indicators. The indexes for a selected area are compared to those for all other locations in the state or nation. For more information and calculation details on the EJ and supplemental indexes, please visit the [EJScreen website](#).

EJ INDEXES

The EJ indexes help users screen for potential EJ concerns. To do this, the EJ index combines data on low income and people of color populations with a single environmental indicator.

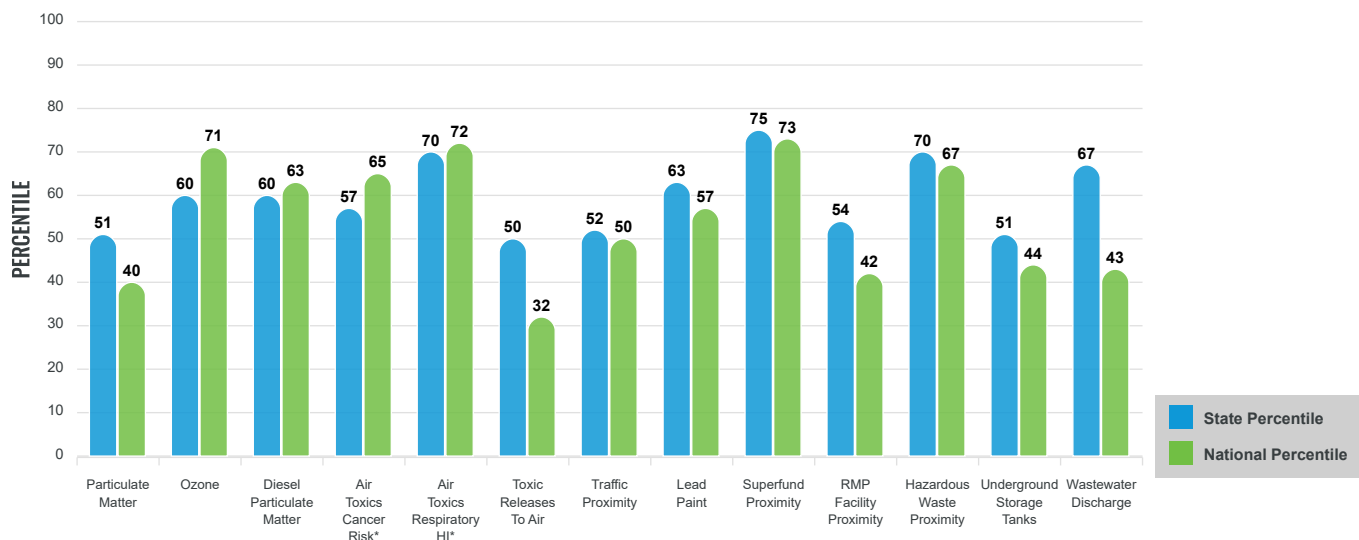
EJ INDEXES FOR THE SELECTED LOCATION



SUPPLEMENTAL INDEXES

The supplemental indexes offer a different perspective on community-level vulnerability. They combine data on percent low-income, percent linguistically isolated, percent less than high school education, percent unemployed, and low life expectancy with a single environmental indicator.

SUPPLEMENTAL INDEXES FOR THE SELECTED LOCATION



These percentiles provide perspective on how the selected block group or buffer area compares to the entire state or nation.

Report for Tract: 24033807408

EJScreen Environmental and Socioeconomic Indicators Data

SELECTED VARIABLES	VALUE	STATE AVERAGE	PERCENTILE IN STATE	USA AVERAGE	PERCENTILE IN USA
POLLUTION AND SOURCES					
Particulate Matter (µg/m ³)	7.89	7.84	43	8.08	42
Ozone (ppb)	67.5	66	58	61.6	87
Diesel Particulate Matter (µg/m ³)	0.323	0.288	59	0.261	72
Air Toxics Cancer Risk* (lifetime risk per million)	30	28	18	25	52
Air Toxics Respiratory HI*	0.4	0.34	50	0.31	70
Toxic Releases to Air	210	430	45	4,600	32
Truck Proximity (daily truck count/distance to road)	91	180	48	210	54
Lead Paint (% Pre-1960 Housing)	0.47	0.32	70	0.3	71
Superfund Proximity (site count/km distance)	0.47	0.13	95	0.13	94
RMP Facility Proximity (facility count/km distance)	0.14	0.42	53	0.43	42
Hazardous Waste Proximity (facility count/km distance)	3.5	2.1	79	1.9	83
Underground Storage Tanks (count/km ²)	0.98	1.9	49	3.9	47
Wastewater Discharge (toxicity-weighted concentration/m distance)	0.00083	1.2	66	22	47
SOCIOECONOMIC INDICATORS					
Demographic Index	39%	36%	58	35%	64
Supplemental Demographic Index	10%	12%	49	14%	35
People of Color	62%	49%	62	39%	73
Low Income	17%	22%	49	31%	32
Unemployment Rate	5%	6%	58	6%	58
Limited English Speaking Households	4%	3%	76	5%	71
Less Than High School Education	7%	10%	52	12%	47
Under Age 5	6%	6%	59	6%	60
Over Age 64	15%	16%	49	17%	46
Low Life Expectancy	17%	19%	26	20%	24

*Diesel particulate matter, air toxics cancer risk, and air toxics respiratory hazard index are from the EPA's Air Toxics Data Update, which is the Agency's ongoing, comprehensive evaluation of air toxics in the United States. This effort aims to prioritize air toxics, emission sources, and locations of interest for further study. It is important to remember that the air toxics data presented here provide broad estimates of health risks over geographic areas of the country, not definitive risks to specific individuals or locations. Cancer risks and hazard indices from the Air Toxics Data Update are reported to one significant figure and any additional significant figures here are due to rounding. More information on the Air Toxics Data Update can be found at: <https://www.epa.gov/haps/air-toxics-data-update>.

Sites reporting to EPA within defined area:

Superfund	1
Hazardous Waste, Treatment, Storage, and Disposal Facilities	5
Water Dischargers	22
Air Pollution	39
Brown fields	1
Toxic Release Inventory	4

Other community features within defined area:

Schools	2
Hospitals	0
Places of Worship	4

Other environmental data:

Air Non-attainment	Yes
Impaired Waters	Yes

Selected location contains American Indian Reservation Lands*	No
Selected location contains a "Justice40 (CEJST)" disadvantaged community	No
Selected location contains an EPA IRA disadvantaged community	No

Report for Tract: 24033807408

EJScreen Environmental and Socioeconomic Indicators Data

HEALTH INDICATORS					
INDICATOR	HEALTH VALUE	STATE AVERAGE	STATE PERCENTILE	US AVERAGE	US PERCENTILE
Low Life Expectancy	17%	19%	26	20%	24
Heart Disease	4	5.3	19	6.1	12
Asthma	8.3	9.9	14	10	10
Cancer	5.8	6.1	46	6.1	41
Persons with Disabilities	11.1%	11.8%	52	13.4%	40

CLIMATE INDICATORS					
INDICATOR	HEALTH VALUE	STATE AVERAGE	STATE PERCENTILE	US AVERAGE	US PERCENTILE
Flood Risk	4%	7%	47	12%	33
Wild re Risk	0%	1%	0	14%	0

CRITICAL SERVICE GAPS					
INDICATOR	HEALTH VALUE	STATE AVERAGE	STATE PERCENTILE	US AVERAGE	US PERCENTILE
Broadband Internet	3%	11%	29	14%	21
Lack of Health Insurance	5%	6%	51	9%	33
Housing Burden	No	N/A	N/A	N/A	N/A
Transportation Access	Yes	N/A	N/A	N/A	N/A
Food Desert	Yes	N/A	N/A	N/A	N/A

Footnotes

Report for Tract: 24033807408

MDE Final EJ Score

2020 Census Tract Name	Total Population	Final EJ Score Percent	Final EJ Score Percentile
8074.04	5575	38.5	89
8074.08	5804	32.86	69.51
8002.06	3908	34	73.89
8004.11	3958	35.23	79.02

MDE Overburdened Communities Combined Score

2020 Census Tract Name	Total Population	Overburdened Exposure Percent	Overburdened Exposure Percentile	Overburdened Pollution Environmental Percent	Overburdened Pollution Environmental Percentile	Sensitive Population Percent	Sensitive Population Percentile	Overburdened All Percent	Overburdened All Percentile
8074.04	5,575	52.36	93.1	10.71	66.71	74.31	82.09	86.74	95.01
8004.11	3,958	46.31	48.46	9.3	60.7	76.83	87.01	76.35	74.44
8074.08	5,804	48.55	73.41	11.33	69.65	68.38	69.58	71.77	85.44
8002.06	3,908	47.45	63.7	15.66	83.94	57.02	43.88	60.7	72.32

MDE Underserved Communities (Socioeconomic-Demographic) Combined Score

2020 Census Tract Name	Total Population	Percent Poverty	Percent Minority	Percent Limited English Proficiency	Demographic Score (Percent for this tract)	Demographic Score (Percentile Distribution across Maryland)
8074.04	5,575	25.12	79.82	9.75	38.23	78.96
8002.06	3,908	22.54	82.65	4.57	36.59	75.46
8074.08	5,804	15.33	62.59	1.22	26.38	56.2
8004.11	3,958	15.2	81.18	2	32.79	68.27