

Public Webinar

Replacement Currency Production Facility at the Beltsville Agricultural Research Center

Draft Environmental Impact Statement

December 2, 2020



American Sign Language translation is provided by **Levi Myers** and **Felicia Pickering** in the Participants panel. We recommend viewing this presentation in WebEx's **Side-by-Side view**, which is identified by the icon in blue:



Online Resources

Project Website

<https://www.nab.usace.army.mil/home/bep-replacement-project/>

Contains the Draft EIS, supporting analyses, background reports, project-specific studies, and informational posters summarizing the project.

Online Reading Room

<https://bep-eis.consultation.ai/>

Contains a virtual open house of Draft EIS materials.



National Environmental Policy Act (1969)

- Requires federal agencies to consider impacts of their proposed actions prior to making any decision on action implementation
- Major actions with the potential to significantly affect the human environment require an Environmental Impact Statement (EIS)
- Preparation of an EIS is a multi-step process, with several opportunities for public input

Public participation is an essential part of NEPA!

Notice of Intent
November 2019

Public Scoping
November 15 –
December 15 2019

Publish
Draft EIS
November 6, 2020

Draft EIS Public
Review Period
(45 Days)
November 6 –
December 21 2020

WE
ARE
HERE

Publish
Final EIS
Spring 2021

Waiting Period
following Final
EIS (30 days)

Record of
Decision
Summer 2021

 = Opportunity for public comment

About the US Department of the Treasury

- The Bureau of Engraving and Printing (BEP) is the bureau within Treasury responsible for manufacturing US currency notes.
- Treasury operates currency production facilities in Washington, DC and Fort Worth, Texas.
- The Washington, DC Facility is over 100 years old.



DC Main Building (constructed 1918)



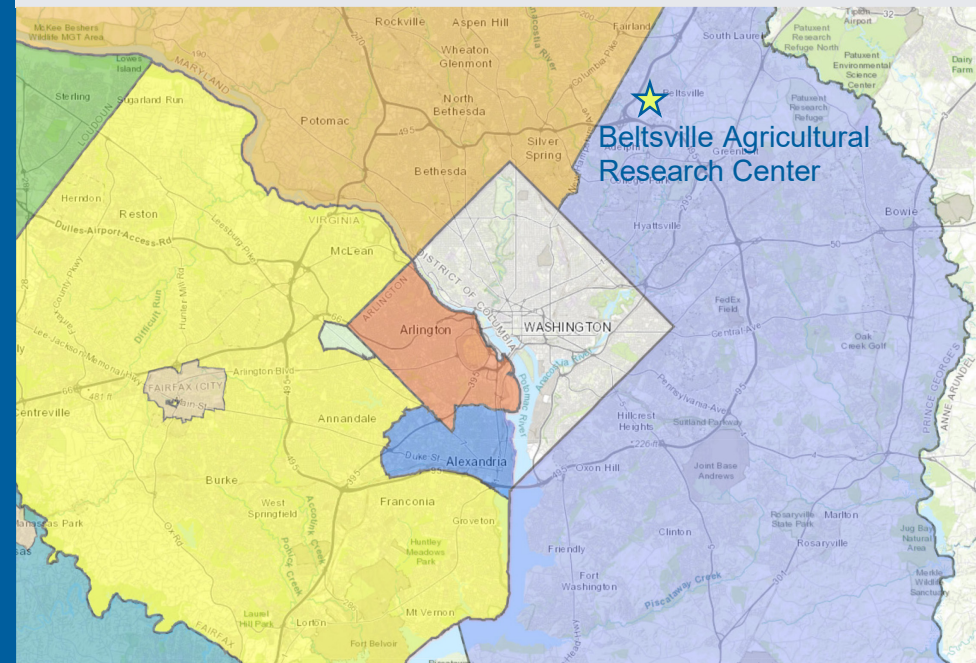
Texas Facility (constructed 1990)

THE PURPOSE OF THE PROPOSED ACTION is to construct and operate a new, approx. 1 million square foot currency production facility on an available parcel that meets the BEP's requirements.

THE NEED FOR THE PROPOSED ACTION is to replace the BEP's obsolete DC Facility that is neither able to support modern currency production nor support the BEP's current and future mission.

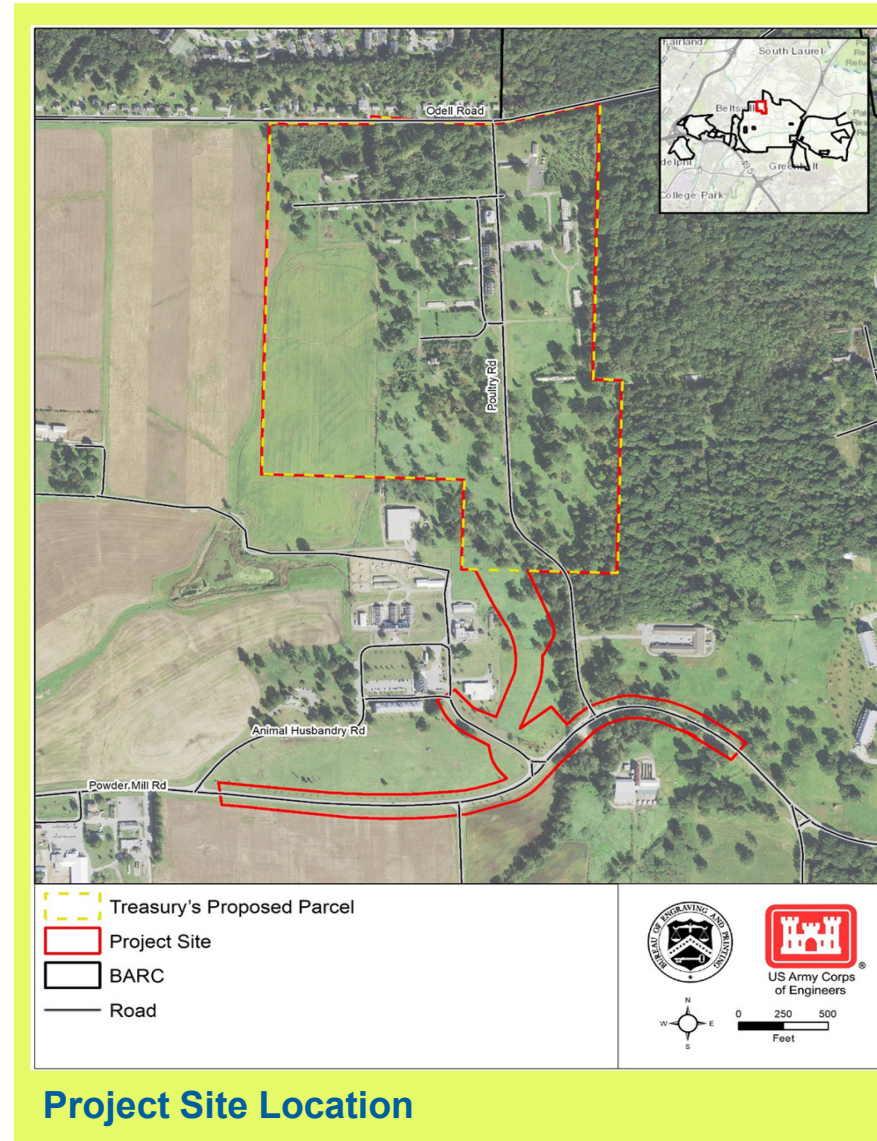
The DC Facility cannot be effectively modernized due to its condition, configuration, and location.

Treasury initially evaluated over 80 sites within the National Capital Region for the proposed currency production facility.



Proposed Project Site

- Treasury's proposed parcel is located between Odell Road and Powder Mill Road at the Beltsville Agricultural Research Center (BARC).
- This site is located in the 200 Area building cluster of BARC.
 - The land has been authorized for transfer under the Agriculture Improvement Act of 2018
- The site currently consists of cropland, meadows, scattered trees, and numerous abandoned and deteriorating buildings.

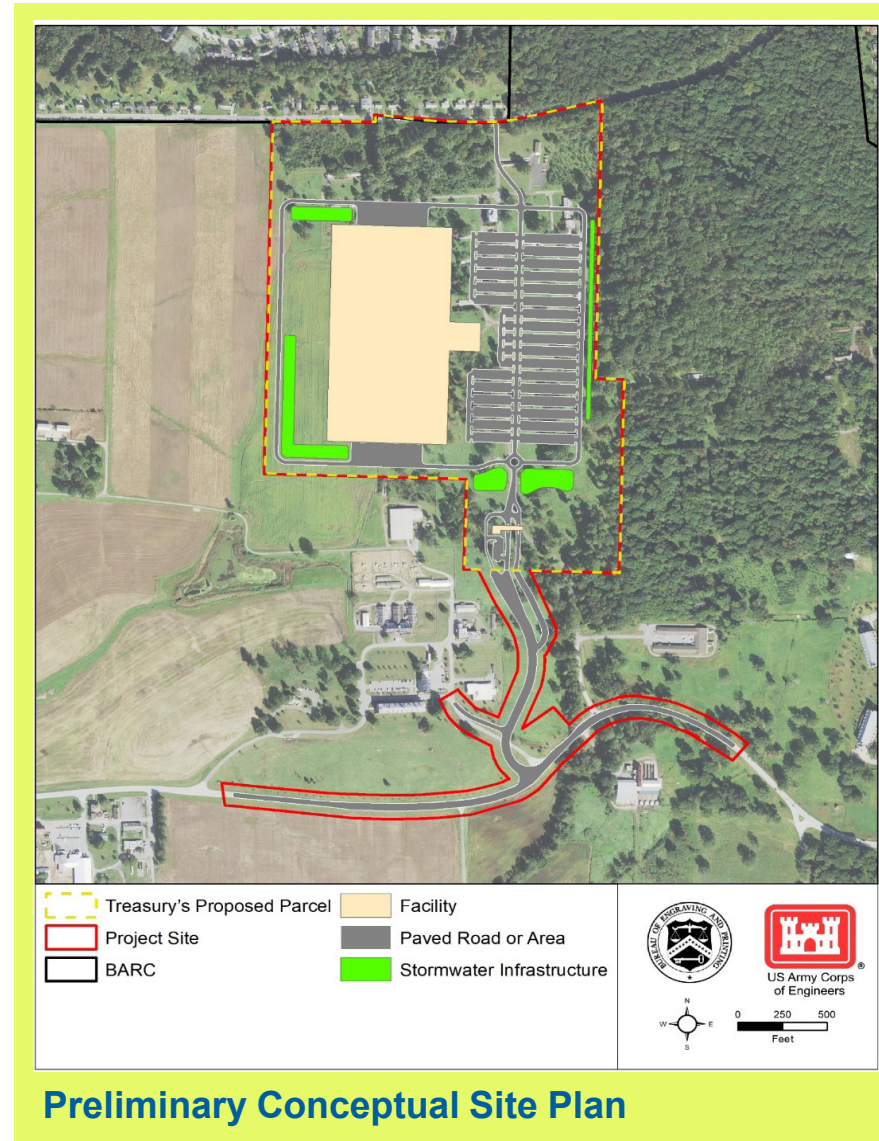


Proposed Action/ Preferred Alternative

Treasury proposes to construct a modern currency production facility at BARC.

- Manufacturing, warehouse, storage, security, and administrative functions
- 1,600 employees working in shifts
- Site access from new entrance road off Powder Mill Road
- Green Infrastructure/Low Impact Development (GI/LID) and other sustainability design features

Construction is anticipated from 2022–2025, followed by transitioning operations from the DC Facility from 2025–2029.



Alternatives Studied in Detail in Draft EIS

PREFERRED ALTERNATIVE

Construct and operate the proposed currency production facility at BARC as described in the Draft EIS.

ACHIEVES the Proposed Action's purpose and need.

DOES NOT ACHIEVE the Proposed Action's purpose and need.

Serves as a **comparative baseline** for the Preferred Alternative.

NO ACTION ALTERNATIVE

Do not implement Proposed Action. Continue to operate under current conditions to extent possible.

Resources Evaluated in Draft EIS



Land use



Visual resources



Air quality



Noise



Geology, topography, and soils



Water resources



Biological resources



Cultural resources



Traffic and transportation



Utilities



Socioeconomics / environmental justice



Hazardous / toxic materials / waste



Human health and safety

Key Findings of the Draft EIS

THE NO ACTION ALTERNATIVE would result in **potentially significant adverse impacts** to two resource areas.

- Cultural resources
- Traffic and transportation

THE PREFERRED ALTERNATIVE would result in **potentially significant adverse impacts** to five resource areas:

- Visual resources
- Water resources
- Cultural resources
- Traffic and transportation
- Socioeconomics and environmental justice

Impacts to all other resource areas would be negligible, less-than-significant adverse, or beneficial.



Public Comment Opportunity

VERBAL COMMENTS (TONIGHT)

1. Press “Raise Hand” button on WebEx to raise your hand
2. State your name, affiliation, and contact info; OR request to remain anonymous
3. Provide your comment within 3 minutes
4. All comments will be recorded and addressed appropriately in Final EIS

WRITTEN COMMENTS

1. Email: BEP-EIS@usace.army.mil
2. Use Project Website:
<https://www.nab.usace.army.mil/home/bep-replacement-project/>
3. Mail to:
ATTN: Bureau of Engraving and Printing
(BEP) Project EIS
US Army Corps of Engineers, Baltimore
District Planning Division
2 Hopkins Plaza, 10th Floor
Baltimore, MD 21201

Public comment period extends through December 21, 2020



Thank you!

Please take this opportunity to:

Visit the online reading room (<https://bep-eis.consultation.ai/>) or project website (<https://www.nab.usace.army.mil/home/bep-replacement-project/>) to learn more about the Proposed Action and its potential impacts, read the Draft EIS, and access this presentation

Develop a better understanding of what is proposed and why, as well as potential environmental impacts

Provide us with informed, substantive, specific, and clear comments on your concerns about the Proposed Action, alternatives, or potential environmental impacts so they can be addressed in the Final EIS

Thank you for your interest and involvement in this process!