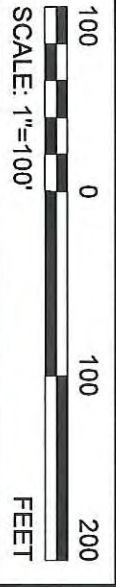
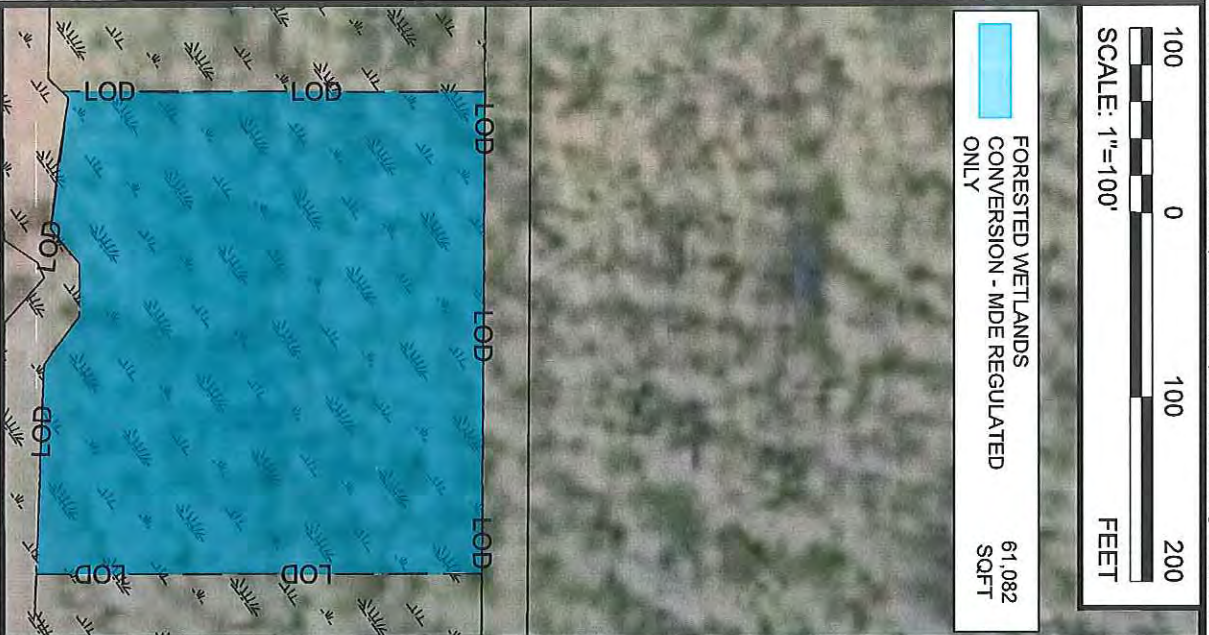


DRAWING: 20078-SBY-wetlands-impacts-exh - wssi permit 2021-09-23.dwg LAYOUT: L9

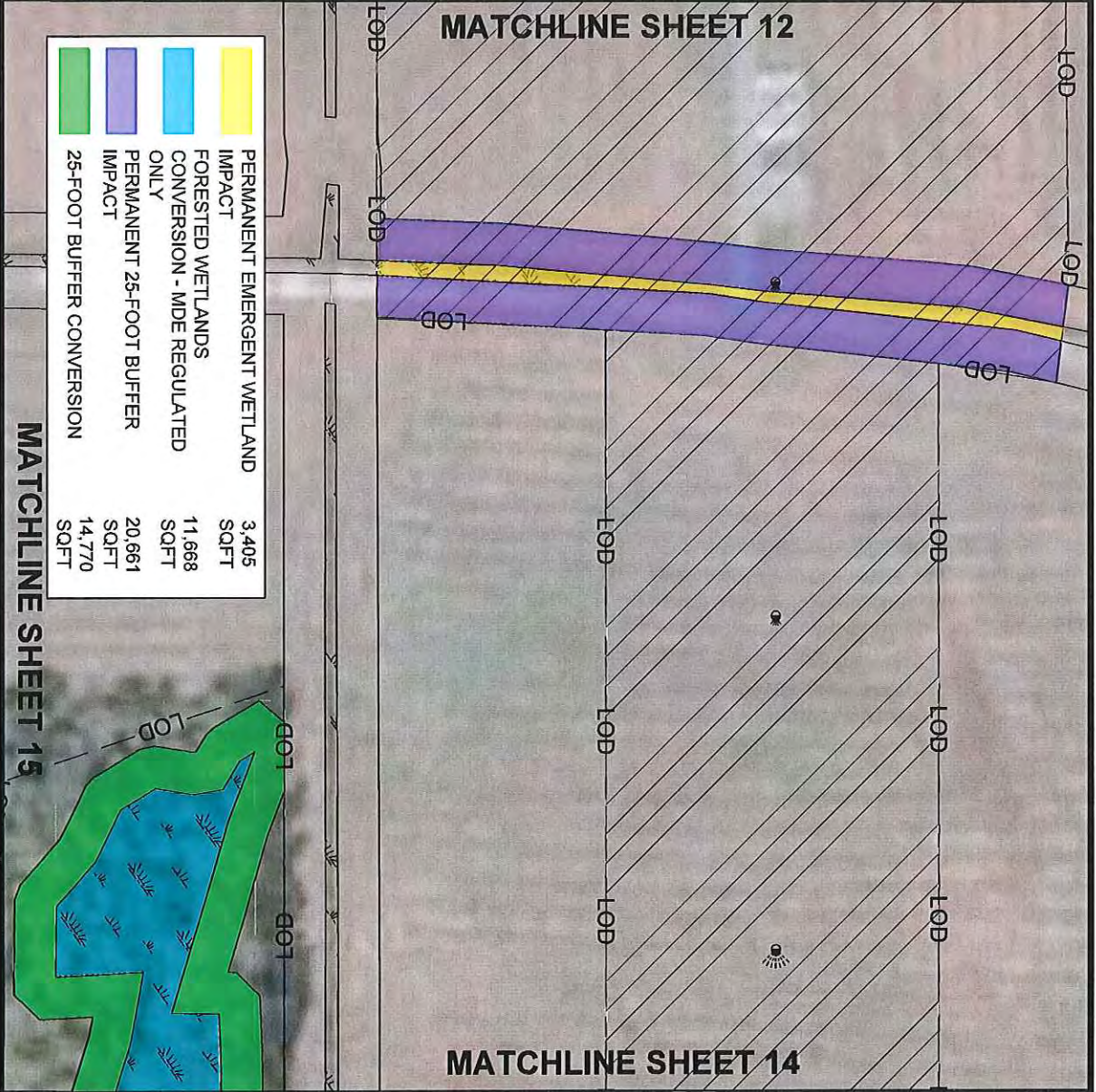


FORESTED WETLANDS  
CONVERSION - MDE REGULATED ONLY 61,082 SQFT



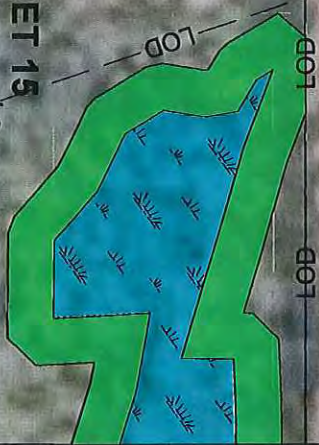
MATCHLINE SHEET 12

	PERMANENT EMERGENT WETLAND IMPACT	3,405 SQFT
	FORESTED WETLANDS CONVERSION - MDE REGULATED ONLY	11,668 SQFT
	PERMANENT 25-FOOT BUFFER IMPACT	20,661 SQFT
	25-FOOT BUFFER CONVERSION	14,770 SQFT



MATCHLINE SHEET 14

MATCHLINE SHEET 15



www.delawareport.com

**WETLAND PERMIT EXHIBITS**  
**SALISBURY-OCEAN CITY WICOMICO REGIONAL AIRPORT**

DRAWN BY:

CHW

CHECKED BY:

MAP

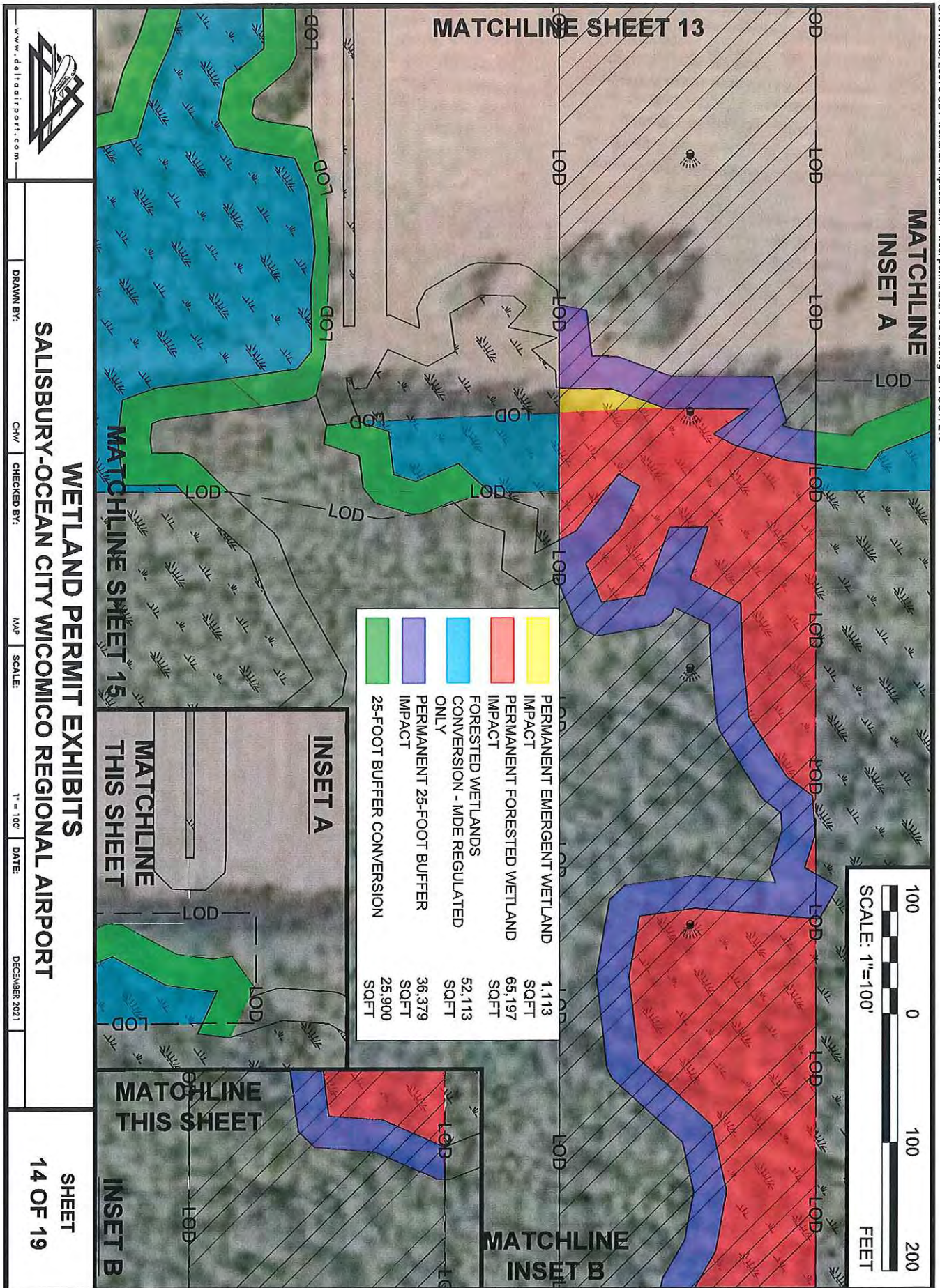
SCALE:

1" = 100'

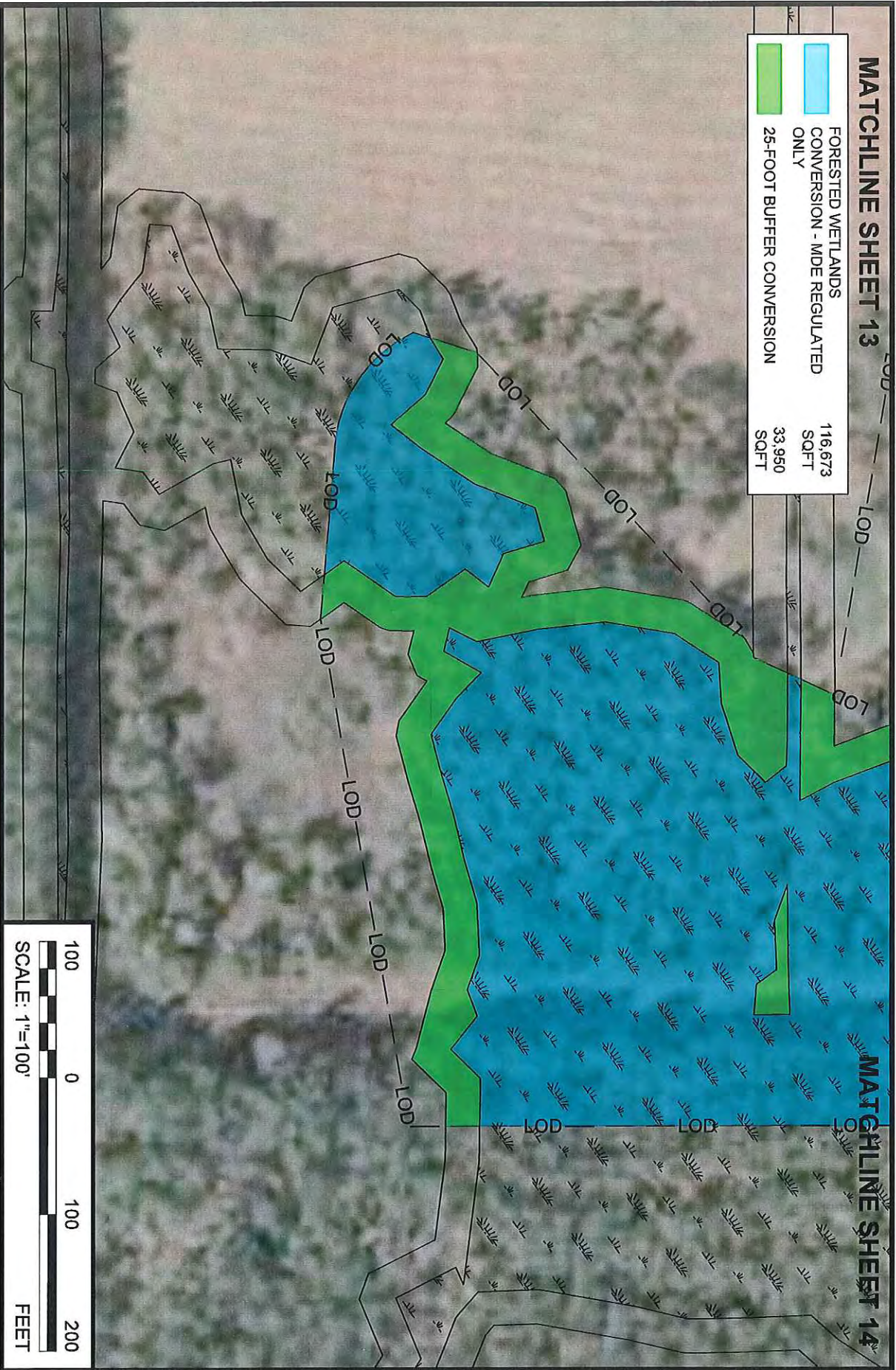
DATE:

DECEMBER 2021

SHEET  
13 OF 19



<b>MATCHLINE SHEET 13</b>	
FORESTED WETLANDS CONVERSION - MDE REGULATED ONLY	116,673 SQFT
25-FOOT BUFFER CONVERSION	33,950 SQFT



www.danielmann.com

**WETLAND PERMIT EXHIBITS**

**SALISBURY-OCEAN CITY WICOMICO REGIONAL AIRPORT**

DRAWN BY: CHW CHECKED BY: MAP SCALE: 1" = 100' DATE: DECEMBER 2021

**SHEET**

**15 OF 19**