

## PROJECT LOCATION

Wroten Island Shoreline Protection Project  
Novak Property

Dorchester County, Maryland

**SUSTAINABLE  
SCIENCE LLC**  
Ecological Engineering Services  
410 S. Second Street  
Denton, Maryland 21629  
Phone: (410) 924-4316  
www.sustainable-science.com

SCALE: 1 inch = 1 mile

DRAWN BY: A. McCullough

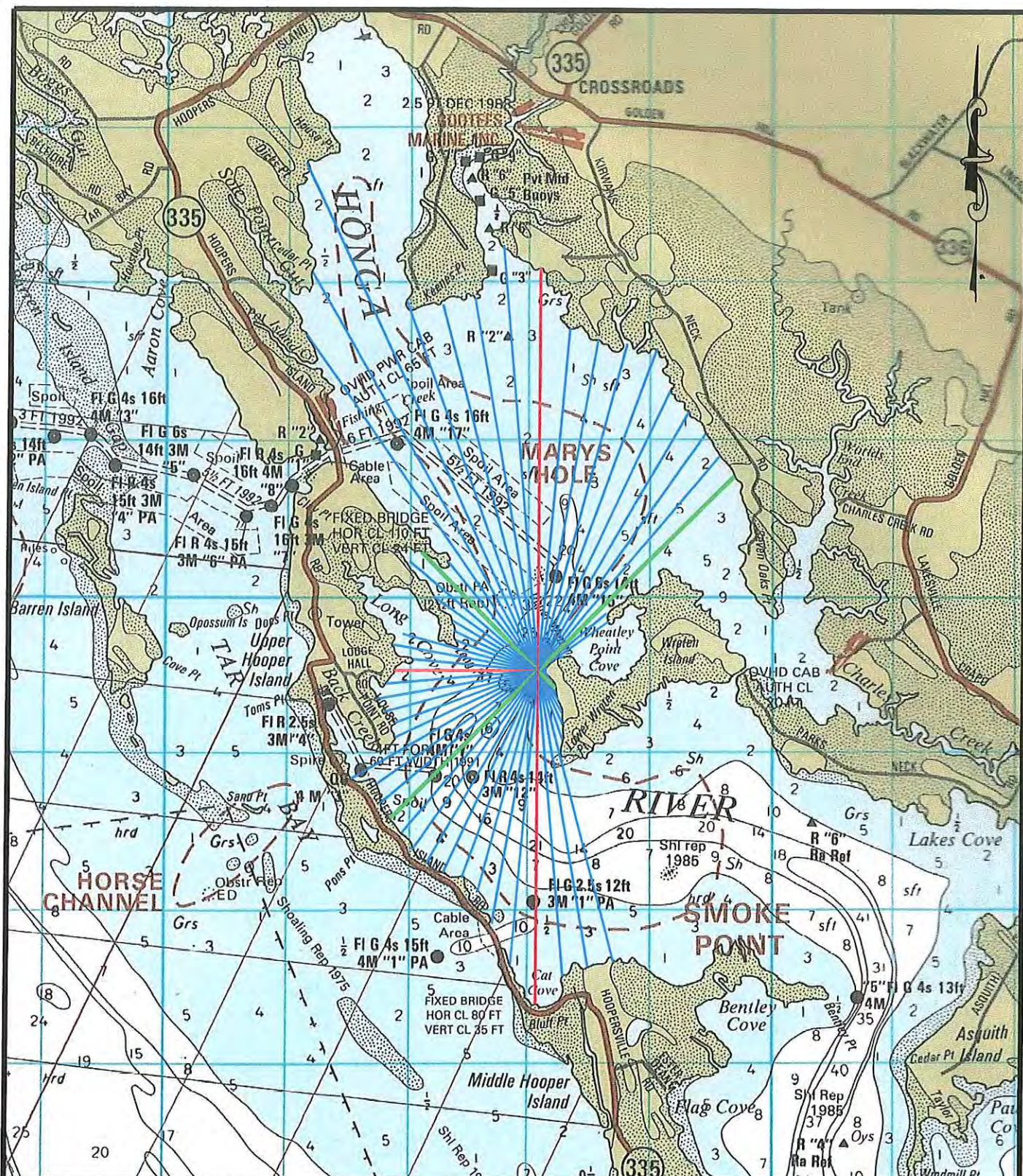
DATE: December 20th, 2018

LAST REVISION: NONE

SS PROJECT NO: 16016

SHEET  
NUMBER 1 OF 13





## FETCH ANALYSIS

Wroten Island Shoreline Protection Project  
Novak Property

Dorchester County, Maryland

**SUSTAINABLE  
SCIENCE LLC**  
Ecological Engineering Services  
410 S. Second Street  
Denton, Maryland 21629  
Phone: (+10) 924-4316  
www.sustainable-science.com

SCALE: 1 inch = 1 mile

DRAWN BY: A. McCullough

DATE: January 3rd, 2019

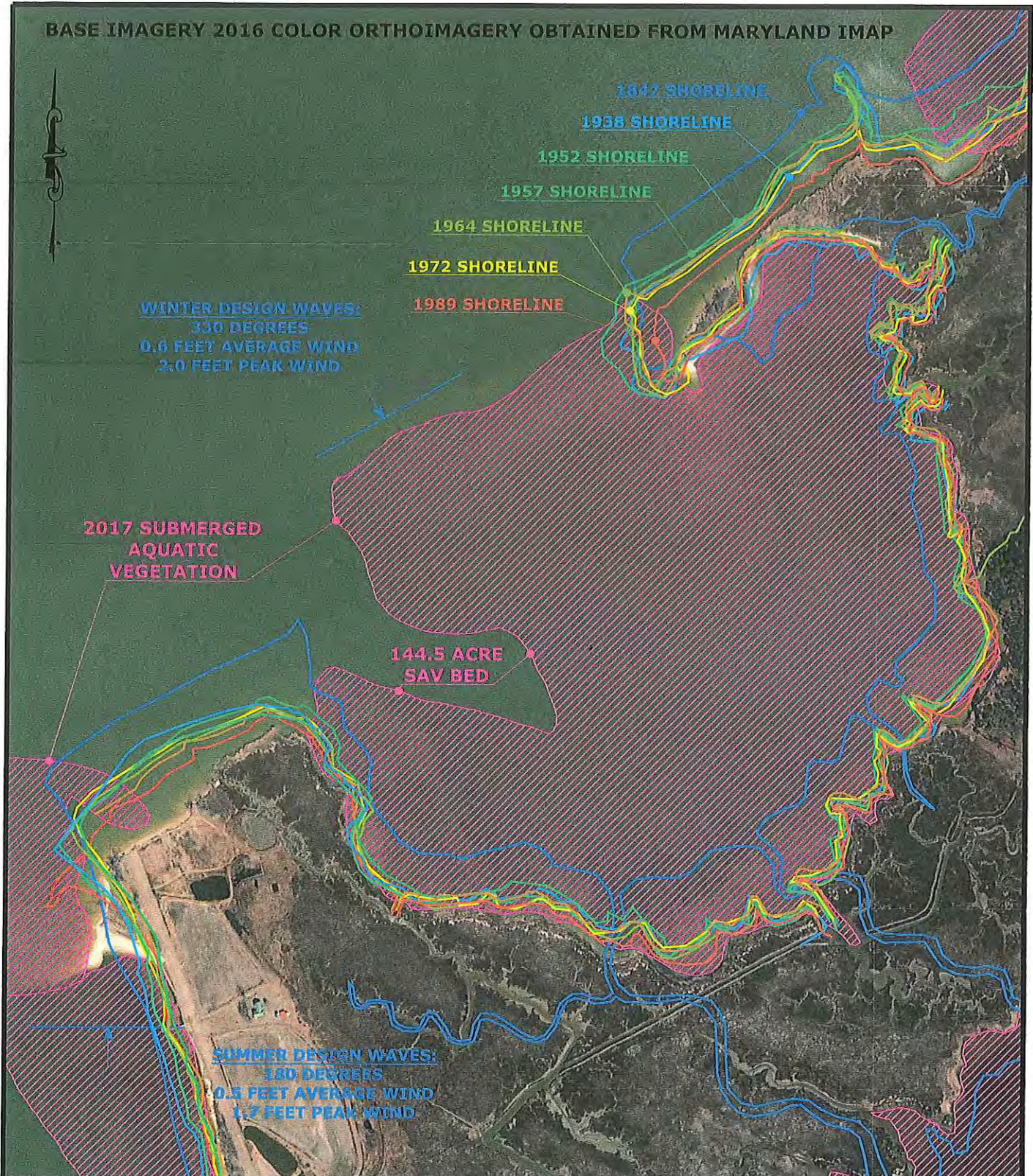
LAST REVISION: NONE

SS PROJECT NO: 16016

SHEET  
NUMBER 2 OF 13



BASE IMAGERY 2016 COLOR ORTHOIMAGERY OBTAINED FROM MARYLAND IMAP



## SHORELINE & WAVE ANALYSIS

Wroten Island Shoreline Protection Project  
Novak Property

Dorchester County, Maryland

**SUSTAINABLE  
SCIENCE LLC**  
Ecological Engineering Services  
410 S. Second Street  
Denton, Maryland 21629  
Phone: (410) 924-4316  
www.sustainable-science.com

SCALE: 1 inch = 600 feet  
DRAWN BY: A. McCullough  
DATE: January 3rd, 2018  
LAST REVISION: NONE  
SS PROJECT NO: 16016

SHEET  
NUMBER 3 OF 13