

Bay Engineering Inc.

Engineers, Planners and Surveyors
 2661 Riva Road, Building 800
 Annapolis, Maryland 21401
 410.897.9290
 410.897.9295 fax
 email: info@bayengineering.com
 www.bayengineering.com



BUOY RELOCATION PLAN WITH SOUNDINGS

ANNAPOLIS CITY MAYOR & ALDERMEN
 7300 EDGEWOOD ROAD, ANNAPOLIS, 21403
 TAX MAP 52G, GRID 5, PARCEL 285
 6TH ELECTION DISTRICT, ANNE ARUNDEL COUNTY, MD

DRAWN BY: J.MARLOWE

SCALE: AS SHOWN

DATE: SEPTEMBER, 2022

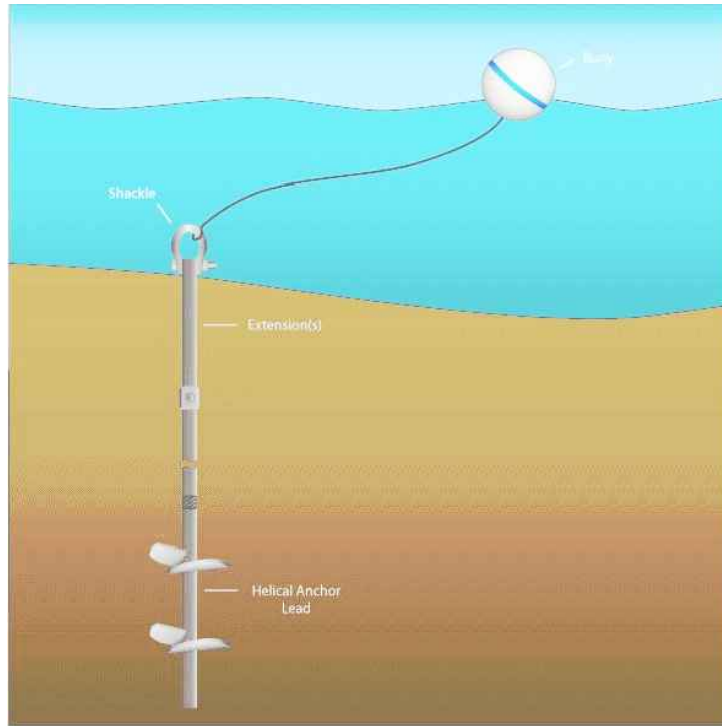
JOB NO.: 19-7030

FOLDER

REF:

SHEET 8 OF 10

TYPICAL BUOY DETAIL AND ANCHOR



HELICAL ANCHOR DETAILS AND EXTENSIONS

TORQUE STRENGTH RATING-21,000 FT-LB
ULTIMATE CAPACITY * (TENSION/COMPRESSION)-200 KIP
* BASED ON MECHANICAL STRENGTH OF COUPLING BOLT.

=NOTES=

1. LEAD AND EXTENSION SECTION LENGTHS AND HELIX SPACINGS ARE NOMINAL.
2. NOMINAL SPACING BETWEEN HELIX PLATES IS THREE TIMES THE DIAMETER OF THE LOWER HELIX.
3. COUPLING BOLT IS 1.25"-7UNC HEX HEAD BOLT PER ASTM A193 GRADE B7 WITH HEX JAM NUT.
4. MANUFACTURER TO HAVE IN EFFECT INDUSTRY RECOGNIZED WRITTEN QUALITY CONTROL FOR ALL MATERIALS AND MANUFACTURING PROCESSES.
5. ALL WELDING TO BE DONE BY WELDERS CERTIFIED UNDER SECTION 5 OF THE AWS CODE D11.
6. ITEMS MARKED "GALV" ARE HOT DIP GALVANIZED PER ASTM A153-LATEST REV.)

| CAT. NO. | FINISH | " L " |
|-----------|--------|-------|
| C110-0646 | GALV | 54' |
| C114-0244 | UNGALV | 54' |
| C110-0647 | GALV | 74' |
| C114-0245 | UNGALV | 74' |

CHANCE
TO TOLERANCE CHART
X 2 1/2" TO 3 1/2" (SEE CHART)
X 3 1/2" TO 4 1/2" (SEE CHART)
X 4 1/2" TO 5 1/2" (SEE CHART)
X 5 1/2" TO 6 1/2" (SEE CHART)
X 6 1/2" TO 7 1/2" (SEE CHART)
X 7 1/2" TO 8 1/2" (SEE CHART)
X 8 1/2" TO 9 1/2" (SEE CHART)
X 9 1/2" TO 10 1/2" (SEE CHART)
X 10 1/2" TO 11 1/2" (SEE CHART)
X 11 1/2" TO 12 1/2" (SEE CHART)
X 12 1/2" TO 13 1/2" (SEE CHART)
X 13 1/2" TO 14 1/2" (SEE CHART)
X 14 1/2" TO 15 1/2" (SEE CHART)
X 15 1/2" TO 16 1/2" (SEE CHART)
X 16 1/2" TO 17 1/2" (SEE CHART)
X 17 1/2" TO 18 1/2" (SEE CHART)
X 18 1/2" TO 19 1/2" (SEE CHART)
X 19 1/2" TO 20 1/2" (SEE CHART)
X 20 1/2" TO 21 1/2" (SEE CHART)
X 21 1/2" TO 22 1/2" (SEE CHART)
X 22 1/2" TO 23 1/2" (SEE CHART)
X 23 1/2" TO 24 1/2" (SEE CHART)
X 24 1/2" TO 25 1/2" (SEE CHART)
X 25 1/2" TO 26 1/2" (SEE CHART)
X 26 1/2" TO 27 1/2" (SEE CHART)
X 27 1/2" TO 28 1/2" (SEE CHART)
X 28 1/2" TO 29 1/2" (SEE CHART)
X 29 1/2" TO 30 1/2" (SEE CHART)
X 30 1/2" TO 31 1/2" (SEE CHART)
X 31 1/2" TO 32 1/2" (SEE CHART)
X 32 1/2" TO 33 1/2" (SEE CHART)
X 33 1/2" TO 34 1/2" (SEE CHART)
X 34 1/2" TO 35 1/2" (SEE CHART)
X 35 1/2" TO 36 1/2" (SEE CHART)
X 36 1/2" TO 37 1/2" (SEE CHART)
X 37 1/2" TO 38 1/2" (SEE CHART)
X 38 1/2" TO 39 1/2" (SEE CHART)
X 39 1/2" TO 40 1/2" (SEE CHART)
X 40 1/2" TO 41 1/2" (SEE CHART)
X 41 1/2" TO 42 1/2" (SEE CHART)
X 42 1/2" TO 43 1/2" (SEE CHART)
X 43 1/2" TO 44 1/2" (SEE CHART)
X 44 1/2" TO 45 1/2" (SEE CHART)
X 45 1/2" TO 46 1/2" (SEE CHART)
X 46 1/2" TO 47 1/2" (SEE CHART)
X 47 1/2" TO 48 1/2" (SEE CHART)
X 48 1/2" TO 49 1/2" (SEE CHART)
X 49 1/2" TO 50 1/2" (SEE CHART)
X 50 1/2" TO 51 1/2" (SEE CHART)
X 51 1/2" TO 52 1/2" (SEE CHART)
X 52 1/2" TO 53 1/2" (SEE CHART)
X 53 1/2" TO 54 1/2" (SEE CHART)
X 54 1/2" TO 55 1/2" (SEE CHART)
X 55 1/2" TO 56 1/2" (SEE CHART)
X 56 1/2" TO 57 1/2" (SEE CHART)
X 57 1/2" TO 58 1/2" (SEE CHART)
X 58 1/2" TO 59 1/2" (SEE CHART)
X 59 1/2" TO 60 1/2" (SEE CHART)
X 60 1/2" TO 61 1/2" (SEE CHART)
X 61 1/2" TO 62 1/2" (SEE CHART)
X 62 1/2" TO 63 1/2" (SEE CHART)
X 63 1/2" TO 64 1/2" (SEE CHART)
X 64 1/2" TO 65 1/2" (SEE CHART)
X 65 1/2" TO 66 1/2" (SEE CHART)
X 66 1/2" TO 67 1/2" (SEE CHART)
X 67 1/2" TO 68 1/2" (SEE CHART)
X 68 1/2" TO 69 1/2" (SEE CHART)
X 69 1/2" TO 70 1/2" (SEE CHART)
X 70 1/2" TO 71 1/2" (SEE CHART)
X 71 1/2" TO 72 1/2" (SEE CHART)
X 72 1/2" TO 73 1/2" (SEE CHART)
X 73 1/2" TO 74 1/2" (SEE CHART)
X 74 1/2" TO 75 1/2" (SEE CHART)
X 75 1/2" TO 76 1/2" (SEE CHART)
X 76 1/2" TO 77 1/2" (SEE CHART)
X 77 1/2" TO 78 1/2" (SEE CHART)
X 78 1/2" TO 79 1/2" (SEE CHART)
X 79 1/2" TO 80 1/2" (SEE CHART)
X 80 1/2" TO 81 1/2" (SEE CHART)
X 81 1/2" TO 82 1/2" (SEE CHART)
X 82 1/2" TO 83 1/2" (SEE CHART)
X 83 1/2" TO 84 1/2" (SEE CHART)
X 84 1/2" TO 85 1/2" (SEE CHART)
X 85 1/2" TO 86 1/2" (SEE CHART)
X 86 1/2" TO 87 1/2" (SEE CHART)
X 87 1/2" TO 88 1/2" (SEE CHART)
X 88 1/2" TO 89 1/2" (SEE CHART)
X 89 1/2" TO 90 1/2" (SEE CHART)
X 90 1/2" TO 91 1/2" (SEE CHART)
X 91 1/2" TO 92 1/2" (SEE CHART)
X 92 1/2" TO 93 1/2" (SEE CHART)
X 93 1/2" TO 94 1/2" (SEE CHART)
X 94 1/2" TO 95 1/2" (SEE CHART)
X 95 1/2" TO 96 1/2" (SEE CHART)
X 96 1/2" TO 97 1/2" (SEE CHART)
X 97 1/2" TO 98 1/2" (SEE CHART)
X 98 1/2" TO 99 1/2" (SEE CHART)
X 99 1/2" TO 100 1/2" (SEE CHART)

HUBBELL POWER SYSTEMS

SS225

ANCHORS AND EXTENSIONS

SIZE DWG NO. CAT / PART / ASSY NO. REV
SB SA110-10020 SEE CHART K

DO NOT SCALE THIS DRAWING DRN BY JCA DATE 8/17/09 SHEET 1/1

Bay Engineering Inc.

Engineers, Planners and Surveyors
2661 Riva Road, Building 800
Annapolis, Maryland 21401
410.897.9290
410.897.9295 fax
email: info@bayengineering.com
www.bayengineering.com



BUOY DETAIL

ANNAPOLIS CITY MAYOR & ALDERMEN
7300 EDGEWOOD ROAD, ANNAPOLIS, 21403
TAX MAP 52G, GRID 5, PARCEL 285
6TH ELECTION DISTRICT, ANNE ARUNDEL COUNTY, MD

DRAWN BY: J.MARLOWE

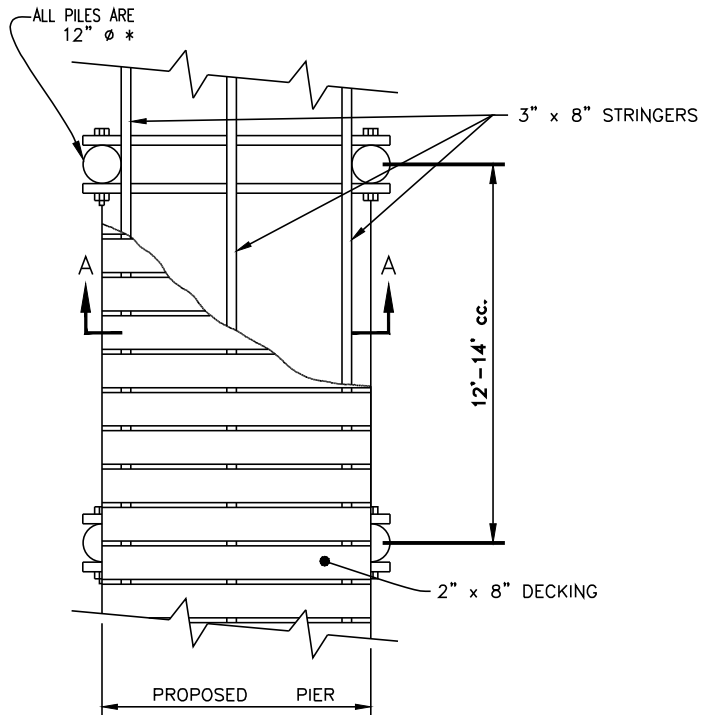
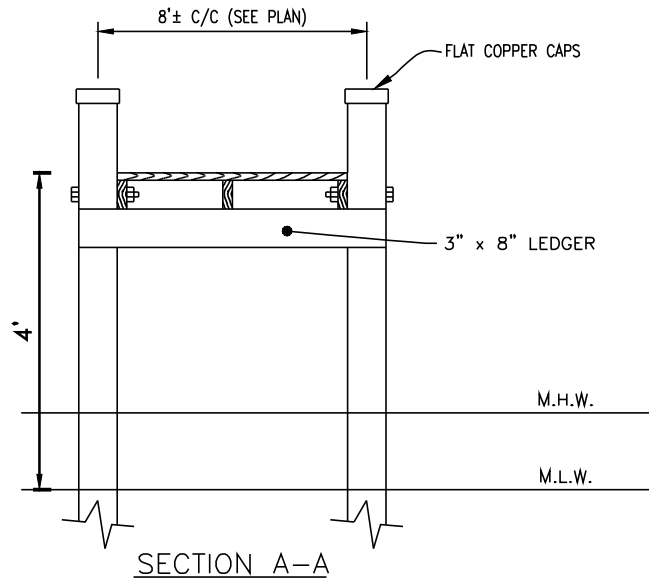
SCALE: AS SHOWN

DATE: SEPTEMBER, 2022

JOB NO.: 19-7030

FOLDER REF:

SHEET 9 OF 10



PIER DETAIL
(NOT TO SCALE)

* PILES SHALL MEASURE MINIMUM 10" DIAMETER

Bay Engineering Inc.

Engineers, Planners and Surveyors
2661 Riva Road, Building 800
Annapolis, Maryland 21401
410.897.9290
410.897.9295 fax
email: info@bayengineering.com
www.bayengineering.com



WOOD PIER DETAIL

ANNAPOLIS CITY MAYOR & ALDERMEN
7300 EDGEWOOD ROAD, ANNAPOLIS, 21403
TAX MAP 52G, GRID 5, PARCEL 285
6TH ELECTION DISTRICT, ANNE ARUNDEL COUNTY, MD

DRAWN BY: J.MARLOWE

SCALE: AS SHOWN

DATE: SEPTEMBER, 2022

JOB NO.: 19-7030

FOLDER

REF:

SHEET 10 OF 10