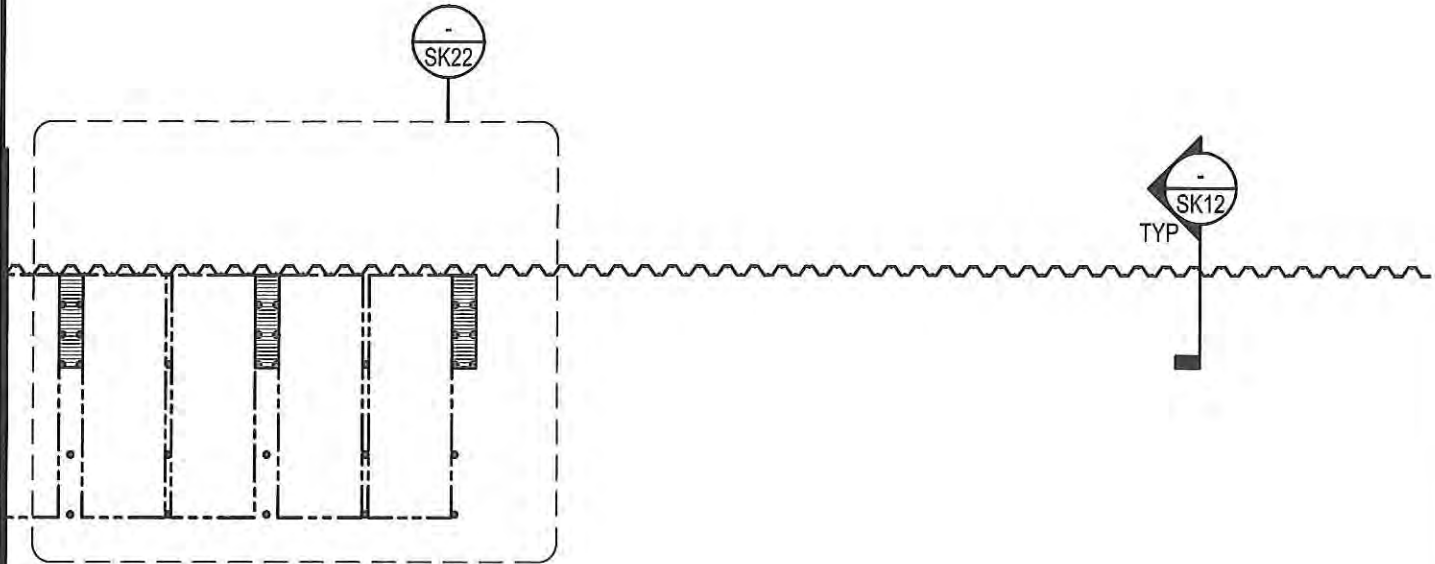


AZ 26 STEEL SHEET PILE BULKHEAD (SEE CIVIL DRAWINGS FOR STATIONING AND EXTENTS)

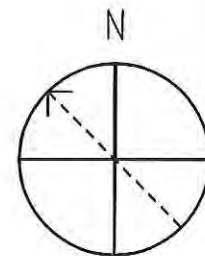


MATCHLINE A-A

MATCHLINE B-B

**PLAN NOTES:**

1. SEE CIVIL DRAWINGS FOR TOPO AND CONTOURS
2. SEE CIVIL DRAWINGS FOR WALL LENGTHS
3. SEE CIVIL DRAWINGS FOR NORTHINGS AND EASTINGS
4. SEE CIVIL DRAWINGS FOR STRUCTURAL DEMOLITION LOCATIONS.
5. MORE NOTES FORTHCOMING FOR 95% SUBMITTAL



SHEET S8 OF S30



ENGINEERS  
PLANNERS  
SCIENTISTS  
CONSTRUCTION MANAGERS

936 RIDGEBROOK ROAD  
SPARKS, MARYLAND 21152  
TELEPHONE: (410) 316-7800  
FAX: (410) 316-7818

DATE  
**04/13/2022**

SCALE  
**1/32" = 1'-0"**

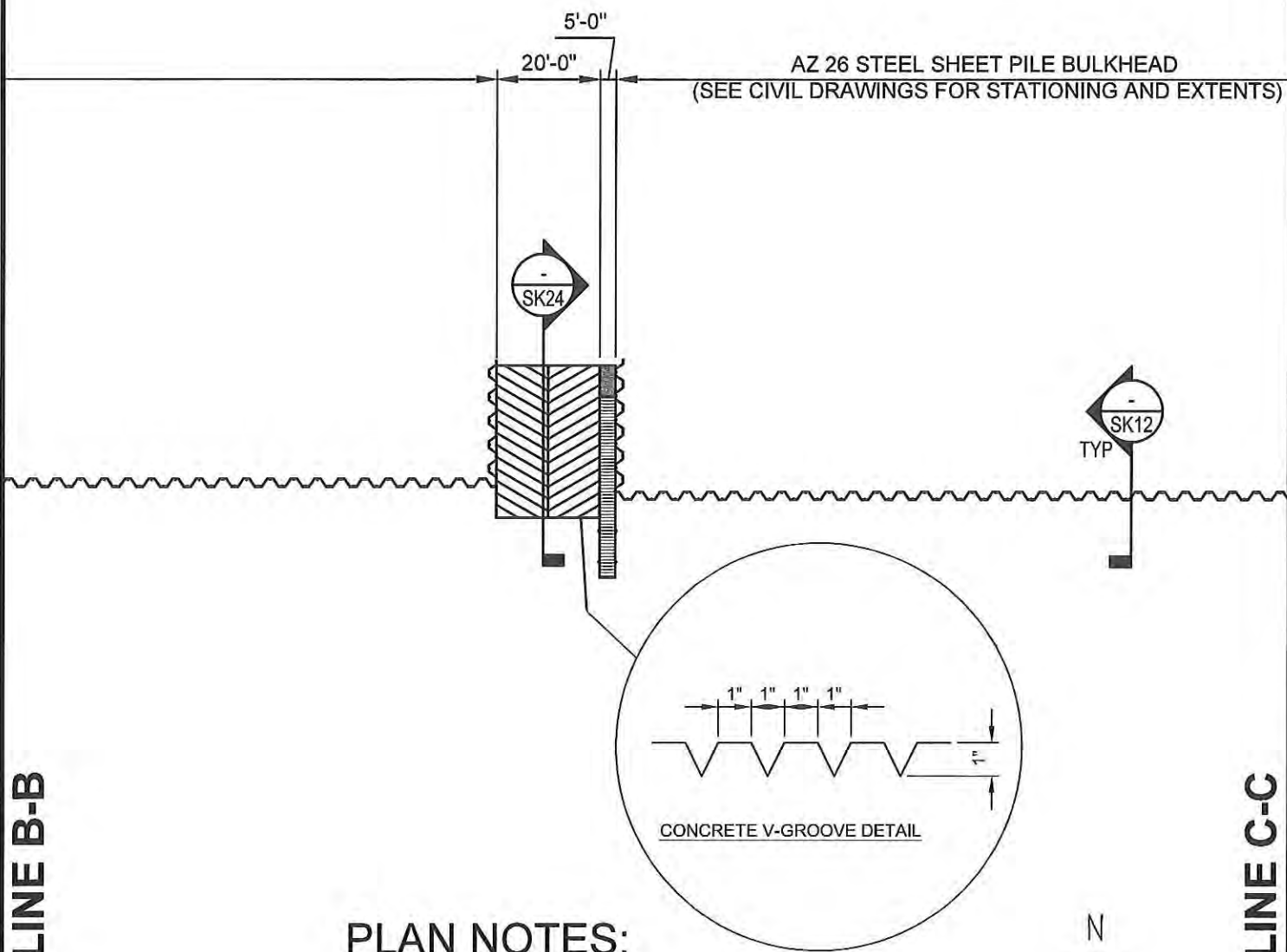
DESIGNED BY  
**PDB**

DRAWN BY  
**PDB**

**BULKHEAD AND STONE SEAWALL PLAN**  
PROJECT: REPLACEMENT BULKHEADS, PIERS, PILES, REVETMENT  
**PHASE 1 MARINE IMPROVEMENT PROJECT**  
AT  
**LOVE POINT STATE PARK**  
FOR STATE OF MD DNR, 580 TAYLOR AVE E-4, QUEEN ANNE'S COUNTY, ANNAPOLIS, MD 21401

MATCHLINE B-B

MATCHLINE C-C



**PLAN NOTES:**

1. SEE CIVIL DRAWINGS FOR TOPO AND CONTOURS
2. SEE CIVIL DRAWINGS FOR WALL LENGTHS
3. SEE CIVIL DRAWINGS FOR NORTHINGS AND EASTINGS
4. SEE CIVIL DRAWINGS FOR STRUCTURAL DEMOLITION LOCATIONS.
5. MORE NOTES FORTHCOMING FOR 95% SUBMITTAL

SHEET S9 OF S30



ENGINEERS  
 PLANNERS  
 SCIENTISTS  
 CONSTRUCTION MANAGERS

936 RIDGEBROOK ROAD  
 SPARKS, MARYLAND 21152  
 TELEPHONE: (410) 316-7800  
 FAX: (410) 316-7818

DATE  
**04/13/2022**

SCALE  
 $\frac{1}{32}'' = 1'-0''$

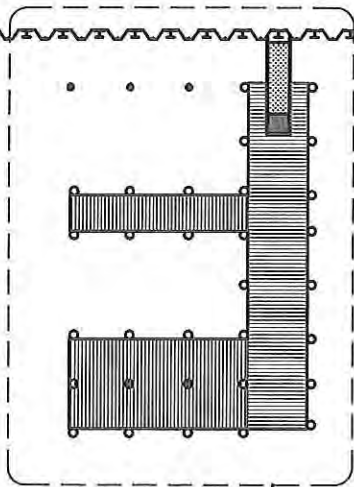
DESIGNED BY  
**PDB**

DRAWN BY  
**PDB**

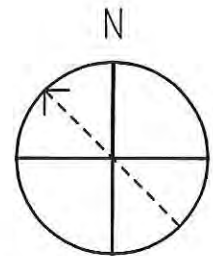
**BULKHEAD AND STONE SEAWALL PLAN**  
 PROJECT: REPLACEMENT BULKHEADS, PIERS, PILES, REVETMENT  
**PHASE 1 MARINE IMPROVEMENT PROJECT**  
 AT  
**LOVE POINT STATE PARK**  
 FOR STATE OF MD DNR, 580 TAYLOR AVE E-4, QUEEN ANNE'S COUNTY,  
 ANNAPOLIS, MD 21401

MATCHLINE C-C

AZ 26 STEEL SHEET PILE BULKHEAD  
WITH STEEL HP PILES  
(SEE CIVIL DRAWINGS FOR  
STATIONING AND EXTENT)



PLAN NOTES:



1. SEE CIVIL DRAWINGS FOR TOPO AND CONTOURS
2. SEE CIVIL DRAWINGS FOR WALL LENGTHS
3. SEE CIVIL DRAWINGS FOR NORTHINGS AND EASTINGS
4. SEE CIVIL DRAWINGS FOR STRUCTURAL DEMOLITION LOCATIONS.
5. MORE NOTES FORTHCOMING FOR 95% SUBMITTAL

SHEETS10OF S30



ENGINEERS  
PLANNERS  
SCIENTISTS  
CONSTRUCTION MANAGERS

936 RIDGEBROOK ROAD  
SPARKS, MARYLAND 21152  
TELEPHONE: (410) 316-7800  
FAX: (410) 316-7818

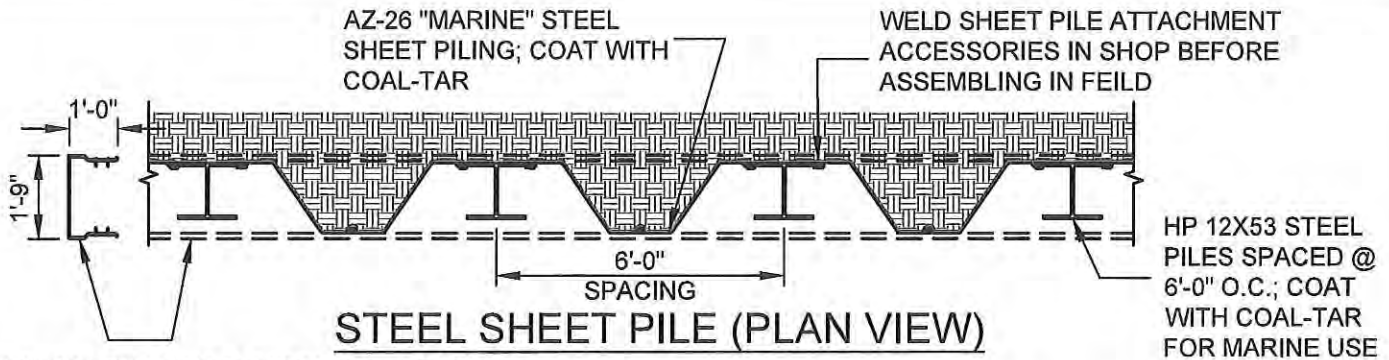
DATE  
04/13/2022

SCALE  
1/32"=1'-0"

DESIGNED BY  
PDB

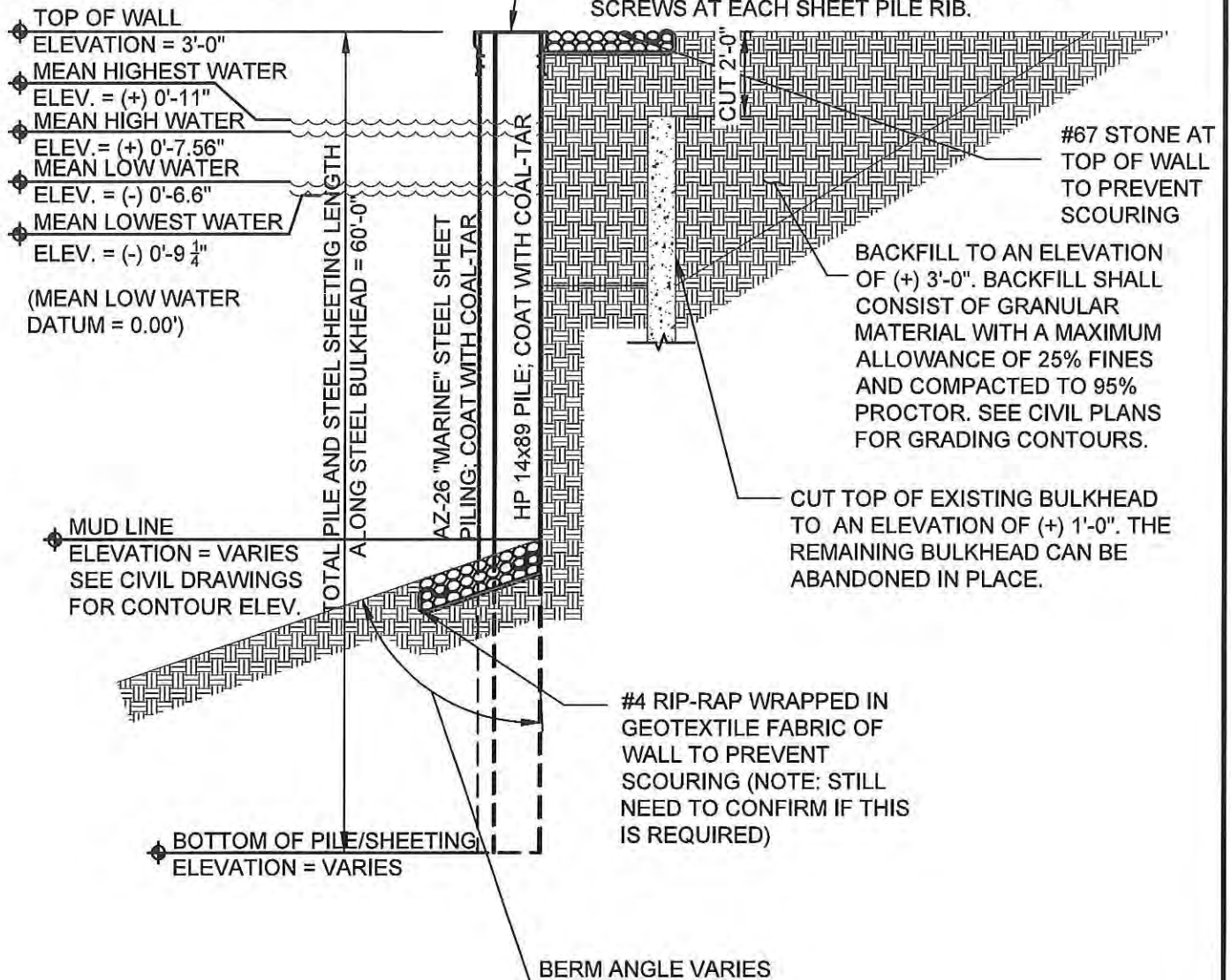
DRAWN BY  
PDB

BULKHEAD AND STONE  
SEAWALL PLAN  
PROJECT: REPLACEMENT BULKHEADS, PIERS, PILES, REVETMENT  
PHASE 1 MARINE IMPROVEMENT PROJECT  
AT  
LOVE POINT STATE PARK  
FOR STATE OF MD DNR, 580 TAYLOR AVE E-4, QUEEN ANNE'S COUNTY,  
ANNAPOLIS, MD 21401



3/8" CONTINUOUS BENT PLATE SHEET PILE BULKHEAD CAP ASSEMBLY. CONNECTION TO BULKHEAD VIA (2) #14 METAL SELF TAPPING SCREWS AT EACH SHEET PILE RIB.

3/8" CONTINUOUS BENT PLATE SHEET PILE BULKHEAD CAP ASSEMBLY. CONNECTION TO BULKHEAD VIA (2) #14 METAL SELF TAPPING SCREWS AT EACH SHEET PILE RIB.



SHEETS110F S30



ENGINEERS  
PLANNERS  
SCIENTISTS  
CONSTRUCTION MANAGERS

936 RIDGEBROOK ROAD  
SPARKS, MARYLAND 21152  
TELEPHONE: (410) 316-7800  
FAX: (410) 316-7818

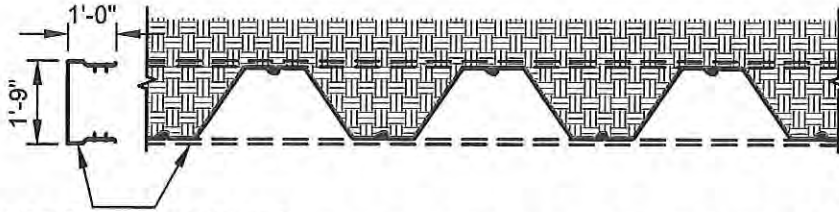
DATE  
04/13/2022

SCALE  
1/4" = 1'-0"

DESIGNED BY  
PDB

DRAWN BY  
PDB

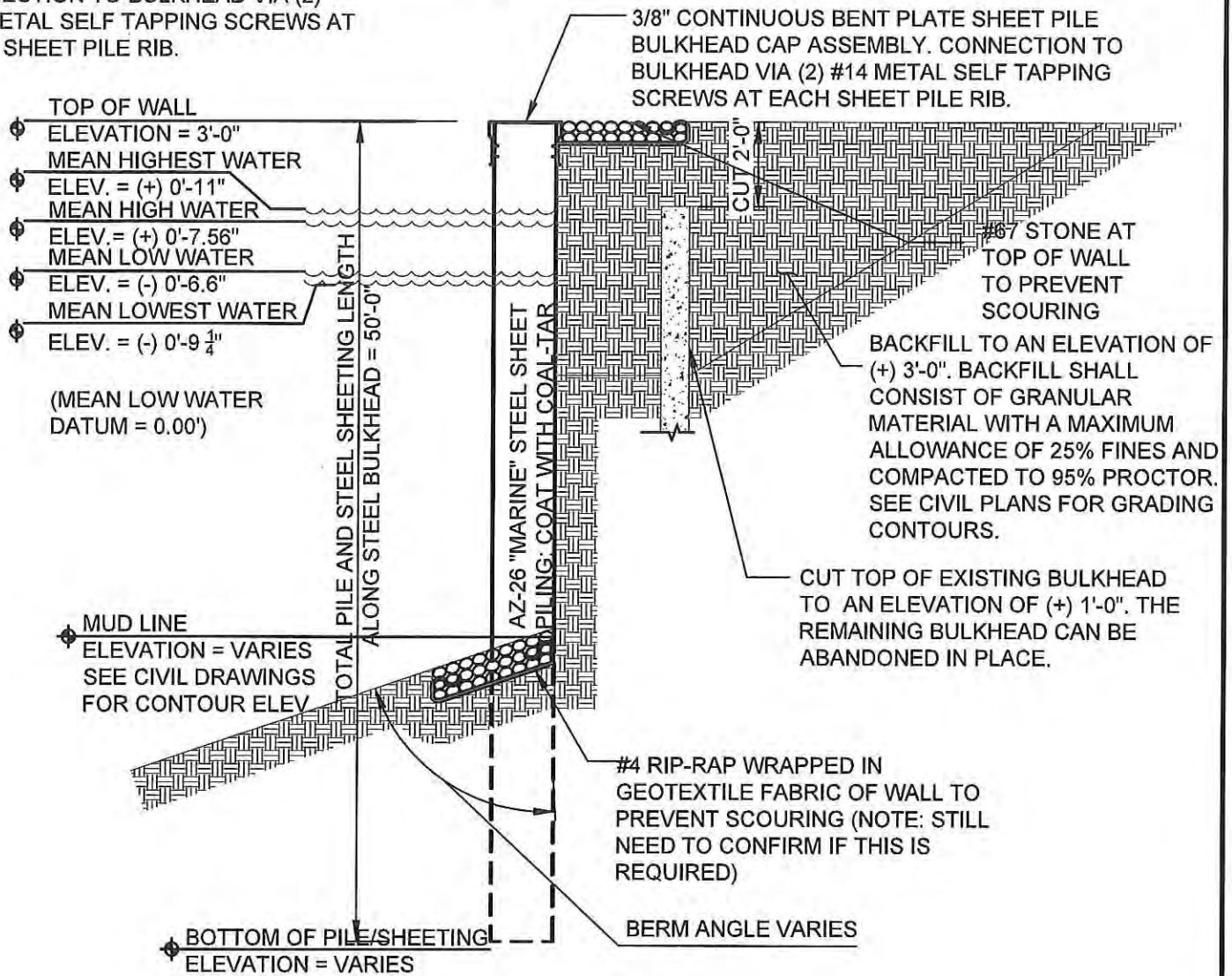
**TYPICAL STEEL SHEET PILE BULKHEAD SECTION (W/PILES)**  
PROJECT: REPLACEMENT BULKHEADS, PIERS, PILES, REVETMENT  
PHASE 1 MARINE IMPROVEMENT PROJECT  
AT  
**LOVE POINT STATE PARK**  
FOR STATE OF MD DNR, 580 TAYLOR AVE E-4, QUEEN ANNE'S COUNTY, ANNAPOLIS, MD 21401



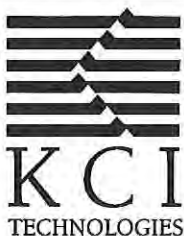
AZ-26 "MARINE" STEEL SHEET PILING; COAT WITH COAL-TAR

3/8" CONTINUOUS BENT PLATE SHEET PILE BULKHEAD CAP ASSEMBLY. CONNECTION TO BULKHEAD VIA (2) #14 METAL SELF TAPPING SCREWS AT EACH SHEET PILE RIB.

### STEEL SHEET PILE (PLAN VIEW)



SHEETS120F S30



ENGINEERS  
 PLANNERS  
 SCIENTISTS  
 CONSTRUCTION MANAGERS

936 RIDGEBROOK ROAD  
 SPARKS, MARYLAND 21152  
 TELEPHONE: (410) 316-7800  
 FAX: (410) 316-7818

DATE  
 04/13/2022

SCALE  
 1/4" = 1'-0"

DESIGNED BY  
 PDB

DRAWN BY  
 PDB

TYPICAL STEEL SHEET PILE BULKHEAD SECTION (NO PILES)  
 PROJECT: REPLACEMENT BULKHEADS, PIERS, PILES, REVETMENT  
 PHASE 1 MARINE IMPROVEMENT PROJECT  
 AT  
 LOVE POINT STATE PARK  
 FOR STATE OF MD DNR, 580 TAYLOR AVE E-4, QUEEN ANNE'S COUNTY, ANNAPOLIS, MD 21401