

SHEETS130F S30

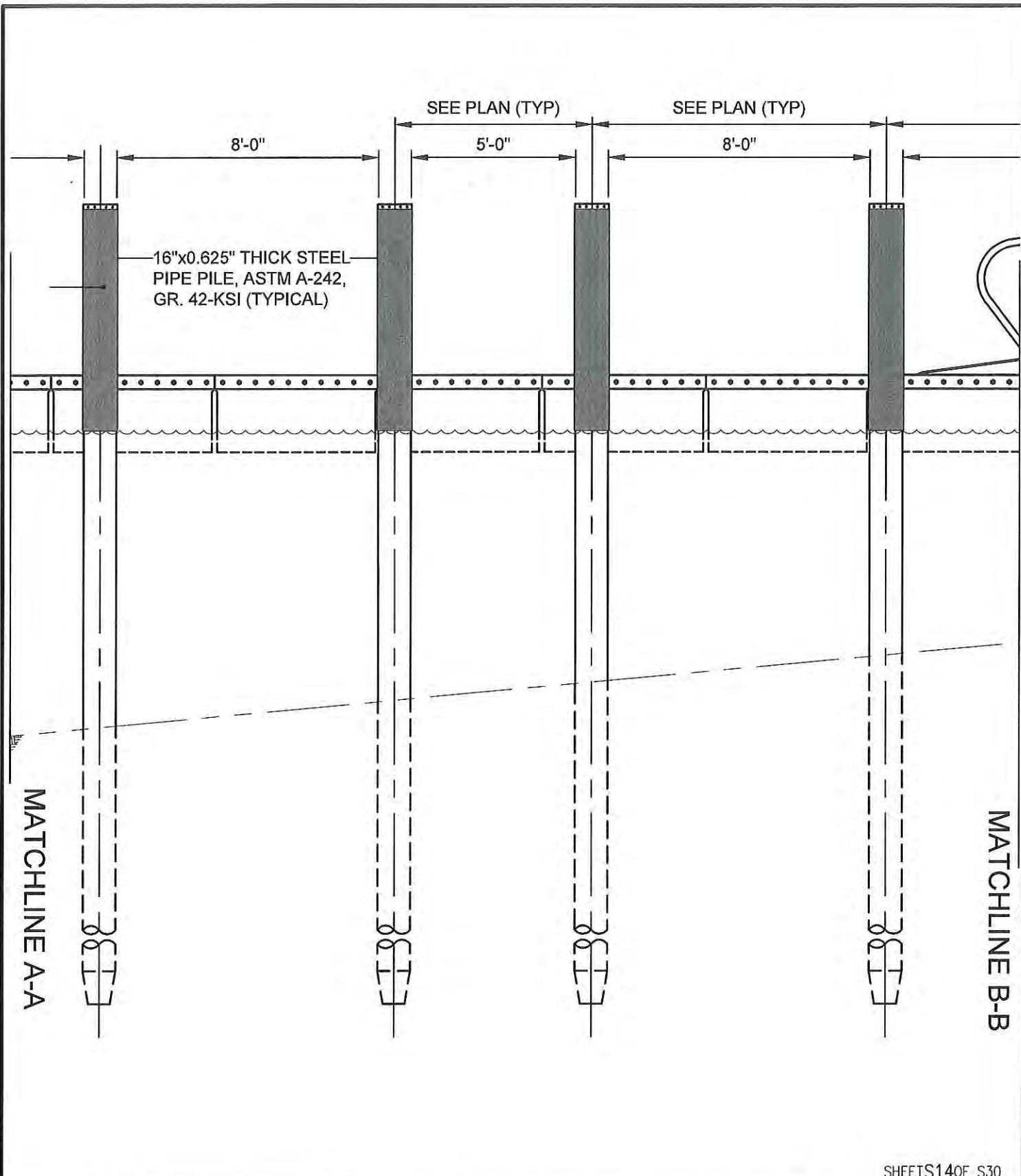


ENGINEERS  
PLANNERS  
SCIENTISTS  
CONSTRUCTION MANAGERS

936 RIDGEBROOK ROAD  
SPARKS, MARYLAND 21152  
TELEPHONE: (410) 316-7800  
FAX: (410) 316-7818

DATE  
**04/07/2022**  
SCALE  
**1/4"=1'-0"**  
DESIGNED BY  
**PDB**  
DRAWN BY  
**PDB**

**DNR-NRP SLIP SECTION**  
PROJECT: REPLACEMENT BULKHEADS, PIERS, PILES, REVETMENT  
**PHASE 1 MARINE IMPROVEMENT PROJECT**  
AT  
**LOVE POINT STATE PARK**  
FOR STATE OF MD DNR, 580 TAYLOR AVE E-4, QUEEN ANNE'S COUNTY,  
ANNAPOLIS, MD 21401



SHEETS140F S30



ENGINEERS  
 PLANNERS  
 SCIENTISTS  
 CONSTRUCTION MANAGERS

936 RIDGEBROOK ROAD  
 SPARKS, MARYLAND 21152  
 TELEPHONE: (410) 316-7800  
 FAX: (410) 316-7818

DATE  
**04/07/2022**

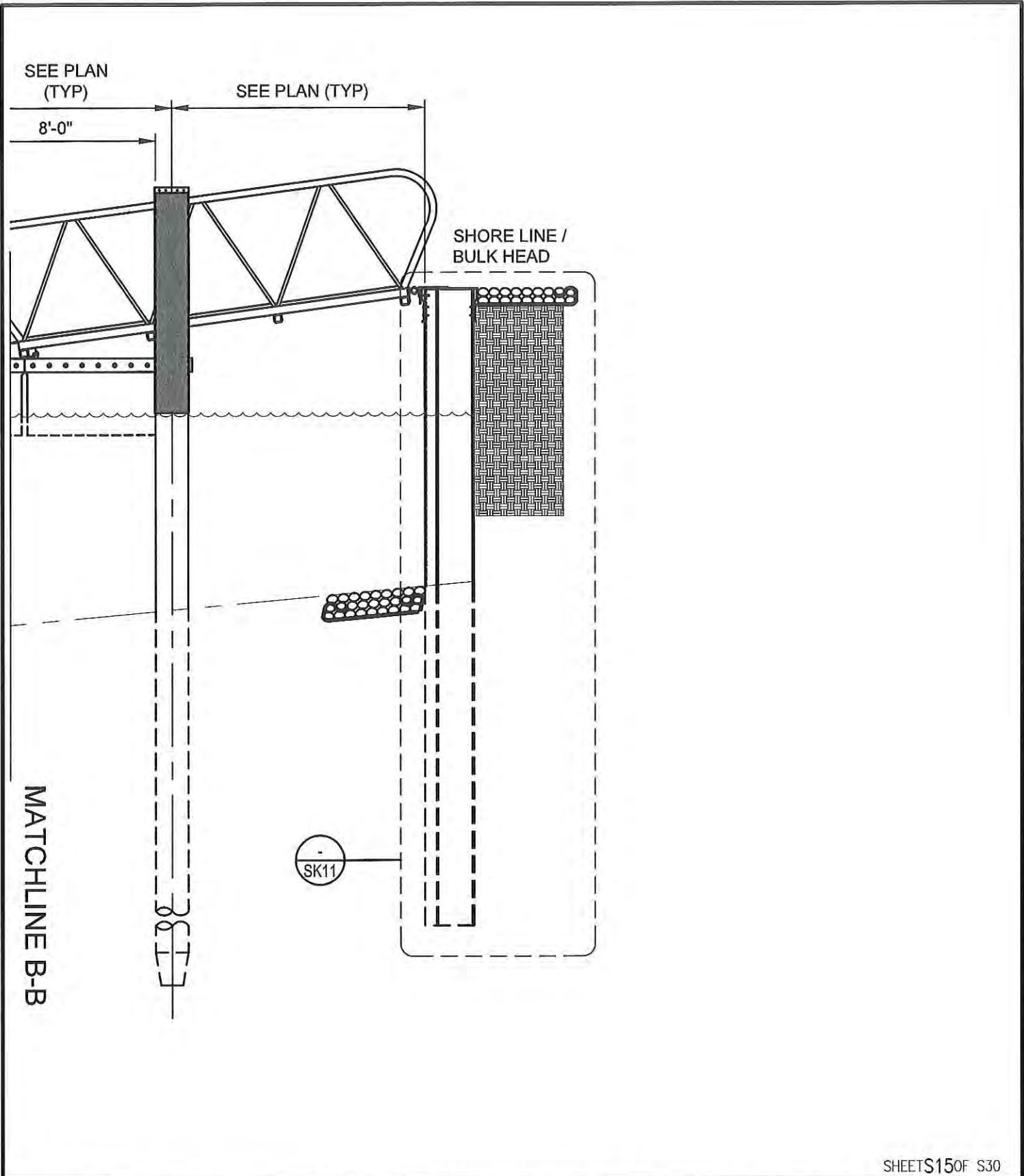
SCALE  
**1/4"=1'-0"**

DESIGNED BY  
**PDB**

DRAWN BY  
**PDB**

**DNR-NRP SLIP SECTION**

PROJECT: REPLACEMENT BULKHEADS, PIERS, PILES, REVETMENT  
**PHASE 1 MARINE IMPROVEMENT PROJECT**  
 AT  
**LOVE POINT STATE PARK**  
 FOR STATE OF MD DNR, 580 TAYLOR AVE E-4, QUEEN ANNE'S COUNTY,  
 ANNAPOLIS, MD 21401



SHEETS150F S30



ENGINEERS  
PLANNERS  
SCIENTISTS  
CONSTRUCTION MANAGERS

936 RIDGEBROOK ROAD  
SPARKS, MARYLAND 21152  
TELEPHONE: (410) 316-7800  
FAX: (410) 316-7818

DATE  
04/07/2022

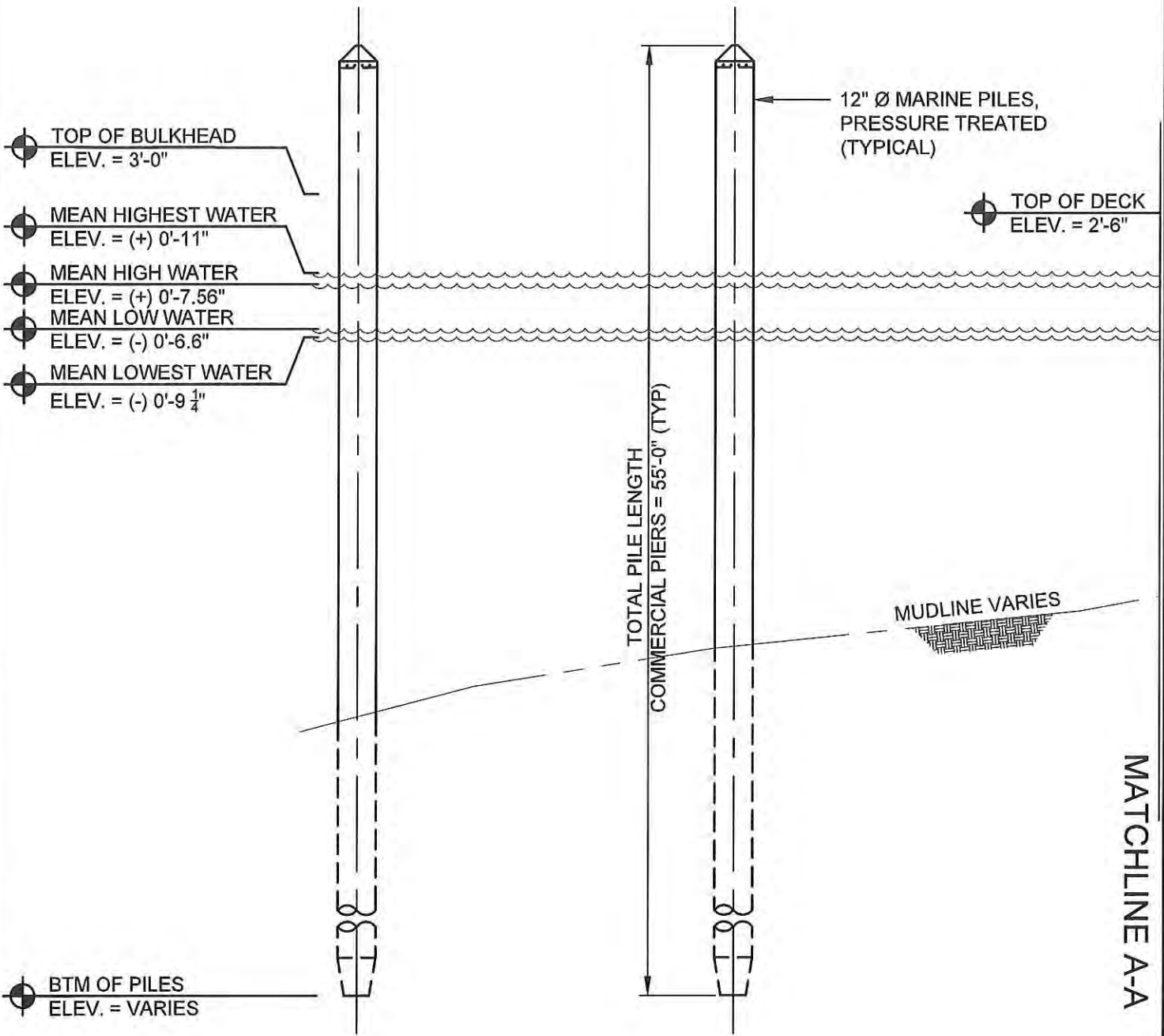
SCALE  
1/4"=1'-0"

DESIGNED BY  
PDB

DRAWN BY  
PDB

DNR-NRP SLIP SECTION

PROJECT: REPLACEMENT BULKHEADS, PIERS, PILES, REVETMENT  
PHASE 1 MARINE IMPROVEMENT PROJECT  
AT  
LOVE POINT STATE PARK  
FOR STATE OF MD DNR, 580 TAYLOR AVE E-4, QUEEN ANNE'S COUNTY,  
ANNAPOLIS, MD 21401



MATCHLINE A-A

SHEETS160F S30



**KCI**  
TECHNOLOGIES

ENGINEERS  
PLANNERS  
SCIENTISTS  
CONSTRUCTION MANAGERS

936 RIDGEBROOK ROAD  
SPARKS, MARYLAND 21152  
TELEPHONE: (410) 316-7800  
FAX: (410) 316-7818

DATE  
**04/07/2022**

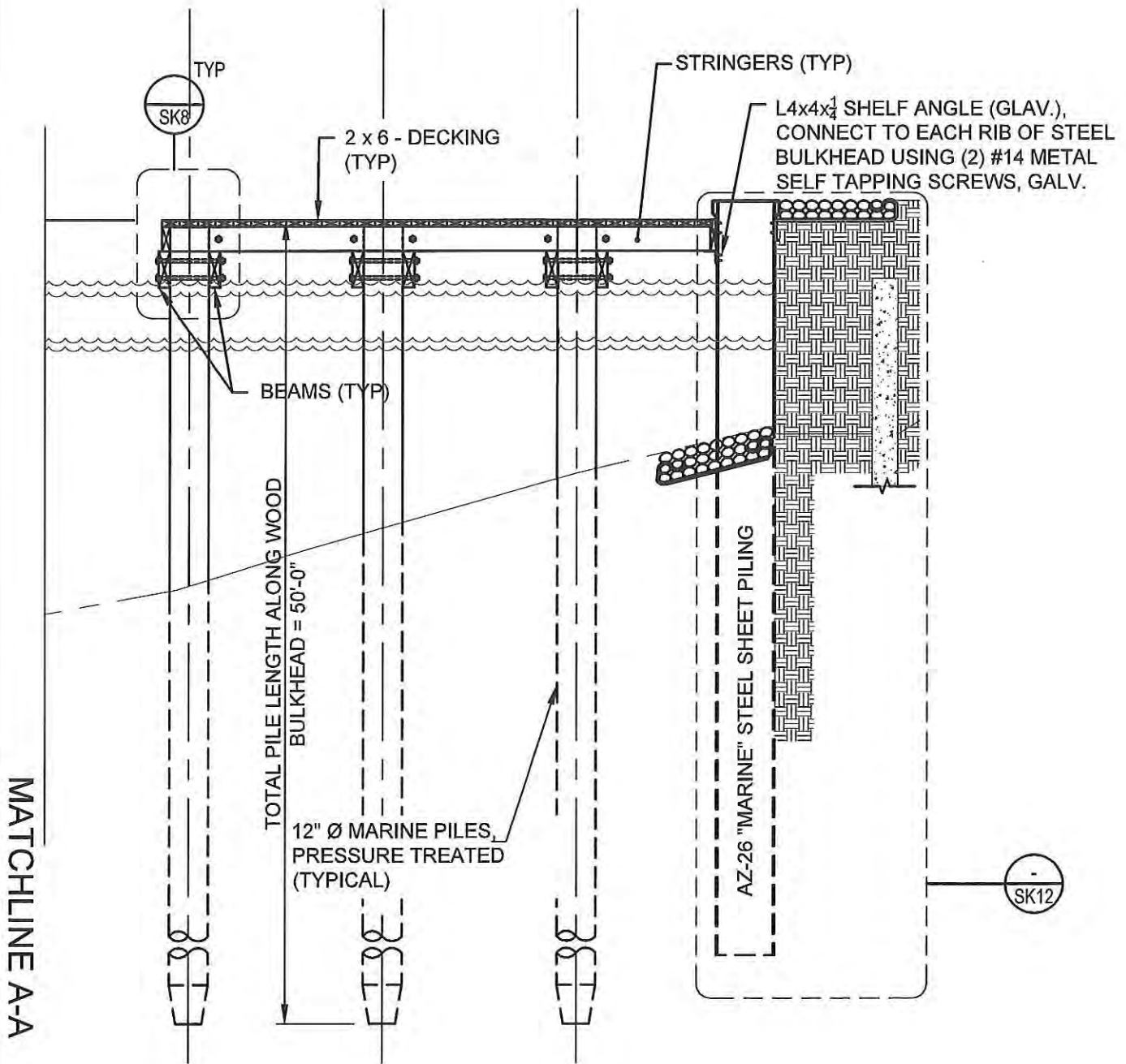
SCALE  
**1/4"=1'-0"**

DESIGNED BY  
**PDB**

DRAWN BY  
**PDB**

**COMMERCIAL SLIP SECTION**

PROJECT: REPLACEMENT BULKHEADS, PIERS, PILES, REVETMENT  
**PHASE 1 MARINE IMPROVEMENT PROJECT**  
 AT  
**LOVE POINT STATE PARK**  
 FOR STATE OF MD DNR, 580 TAYLOR AVE E-4, QUEEN ANNE'S COUNTY,  
 ANNAPOLIS, MD 21401



SHEETS 17 OF S30

**KCI**  
TECHNOLOGIES

ENGINEERS  
PLANNERS  
SCIENTISTS  
CONSTRUCTION MANAGERS

936 RIDGEBROOK ROAD  
SPARKS, MARYLAND 21152  
TELEPHONE: (410) 316-7800  
FAX: (410) 316-7818

DATE  
04/07/2022

SCALE  
1/4" = 1'-0"

DESIGNED BY  
PDB

DRAWN BY  
PDB

**COMMERCIAL SLIP SECTION**

PROJECT: REPLACEMENT BULKHEADS, PIERS, PILES, REVETMENT  
**PHASE 1 MARINE IMPROVEMENT PROJECT**  
AT  
**LOVE POINT STATE PARK**  
FOR STATE OF MD DNR, 580 TAYLOR AVE E-4, QUEEN ANNE'S COUNTY,  
ANNAPOLIS, MD 21401