

SHEETS180F S30



ENGINEERS
PLANNERS
SCIENTISTS
CONSTRUCTION MANAGERS

936 RIDGEBROOK ROAD
SPARKS, MARYLAND 21152
TELEPHONE: (410) 316-7800
FAX: (410) 316-7818

DATE
04/07/2022

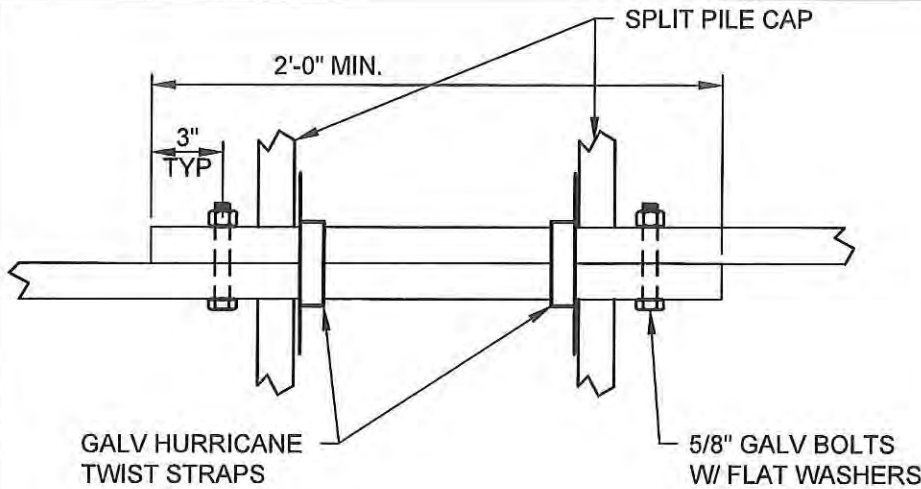
SCALE
1/4"=1'-0"

DESIGNED BY
PDB

DRAWN BY
PDB

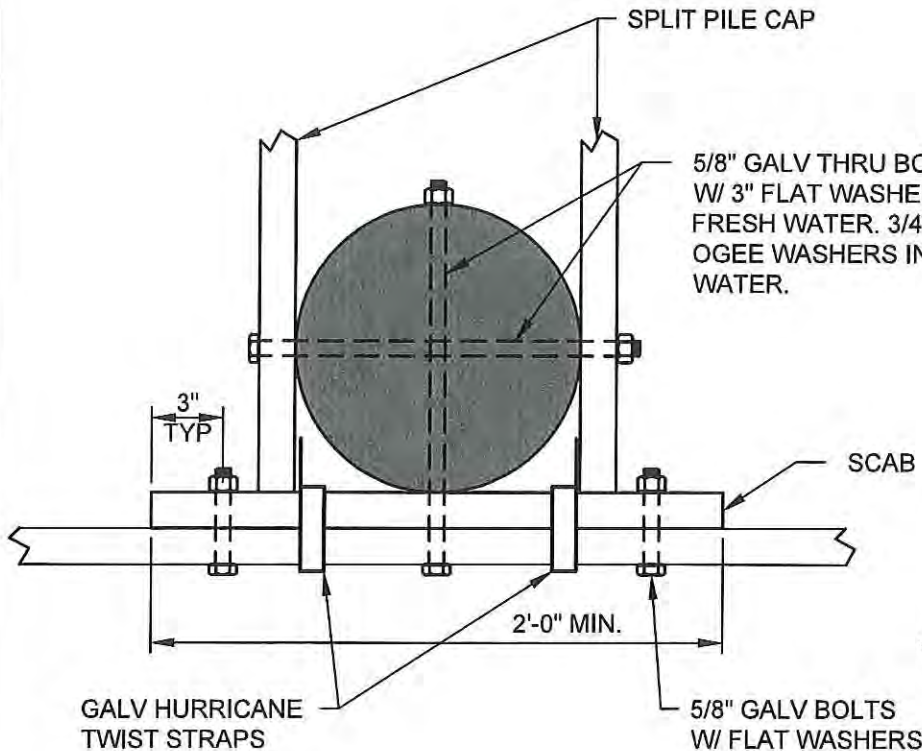
COMMERCIAL SLIP SECTION

PROJECT: REPLACEMENT BULKHEADS, PIERS, PILES, REVETMENT
PHASE 1 MARINE IMPROVEMENT PROJECT
AT
LOVE POINT STATE PARK
FOR STATE OF MD DNR, 580 TAYLOR AVE E-4, QUEEN ANNE'S COUNTY,
ANNAPOLIS, MD 21401

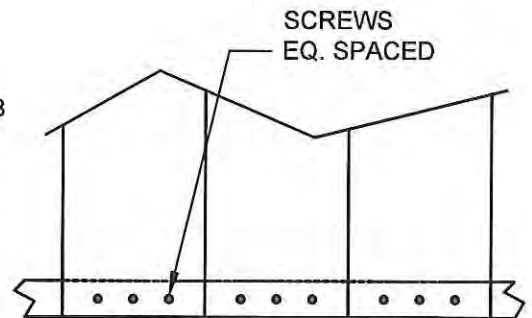


LAP SPLICE DETAIL (PLAN VIEW)

NOTE: THE SPACING BETWEEN DECKING MEMBERS SHOULD BE CHOSEN TO PREVENT A GAP WHICH WOULD HINDER DISABLED ACCESS IN CASE OF SHRINKAGE. HARDWARE SHOULD BE OVERSIZED DUE TO THE HARSHNESS OF THE ENVIRONMENT IN WHICH A TYPICAL PIER IS LOCATED. HURRICANE STRAPS ARE RECOMMENDED. RING OR SPIRAL SHANK NAILS MAY BE CONSIDERED INSTEAD OF BOLTS, BUT DESIGNERS SHOULD EVALUATE LEVEL OF USE OF THE STRUCTURE AND EASE OF REPLACEMENT OR REPAIR. AS IN ALL MARINE CONSTRUCTION, FASTENERS SHOULD BE HOT-DIP GALVANIZED (COATED WITH EPOXY AFTER INSTALLATION) OR STAINLESS STEEL.



SCAB SPLICE DETAIL (PLAN VIEW)

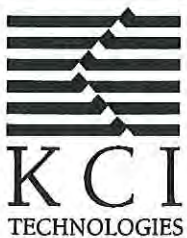


INSTALL DECKING USING THE FOLLOWING SCHEDULE:

- 2 x 6 - (3) #14 SCREWS (3 1/4"). GALVANIZED

2X6 DECK DETAIL

SHEETS190F S30



ENGINEERS
PLANNERS
SCIENTISTS
CONSTRUCTION MANAGERS

936 RIDGEBROOK ROAD
SPARKS, MARYLAND 21152
TELEPHONE: (410) 316-7800
FAX: (410) 316-7818

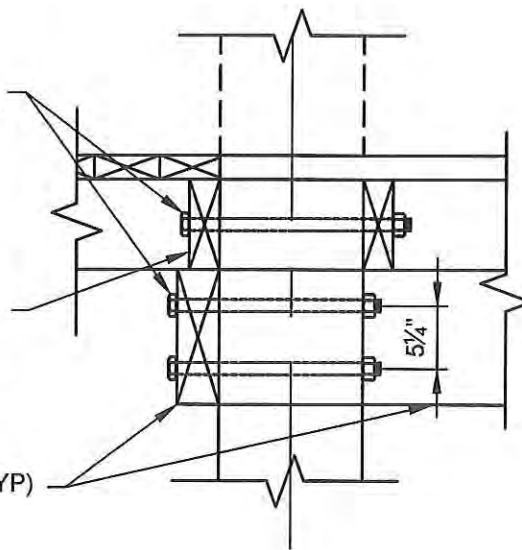
DATE
04/07/2022
SCALE
1-1/2"=1'-0"
DESIGNED BY
PDB
DRAWN BY
PDB

TYPICAL SPLICE & 2X6 DECK CONNECTION DETAILS
PROJECT: REPLACEMENT BULKHEADS, PIERS, PILES, REVETMENT
PHASE 1 MARINE IMPROVEMENT PROJECT
AT
LOVE POINT STATE PARK
FOR STATE OF MD DNR, 580 TAYLOR AVE E-4, QUEEN ANNE'S COUNTY, ANNAPOLIS, MD 21401

1 1/2" Ø GALV. THRU BOLTS.
CONNECT BOTH FRONT AND
BACK BOARDS USING A
SINGLE BOLT W/ NUT AND
WASHER. (TYP)

CONNECT STRINGS USING A
LEDGER AND GALV. BEAM
SEAT SADDLES (SIMPSON
STRONG-TIE OR BETTER)

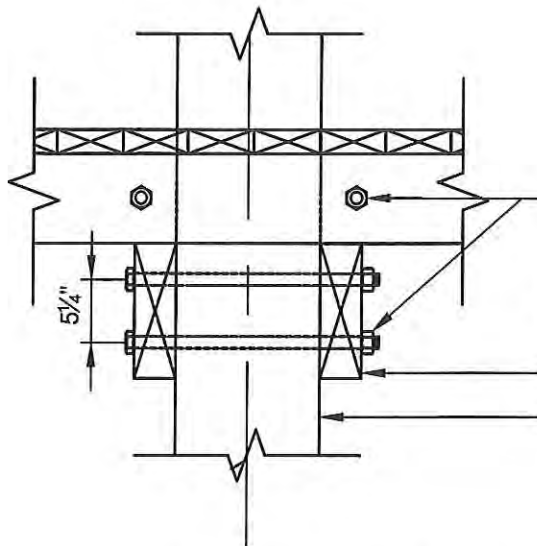
BEAMS (TYP)



LEDGER CONNECTION DETAIL DNR-NRP SLIPS



SCALE: 3/4"=1'-0"



1" Ø GALV. THRU BOLTS.
CONNECT BOTH FRONT AND
BACK BOARDS USING A
SINGLE BOLT W/ NUT AND
WASHER. (TYP)

BEAM

MARINE PILE

TYPICAL PIER CONNECTION DETAIL SRINGERS & BEAMS



SCALE: 3/4"=1'-0"

SHEETS200F S30



ENGINEERS
PLANNERS
SCIENTISTS
CONSTRUCTION MANAGERS

936 RIDGEBROOK ROAD
SPARKS, MARYLAND 21152
TELEPHONE: (410) 316-7800
FAX: (410) 316-7818

DATE
04/07/2022

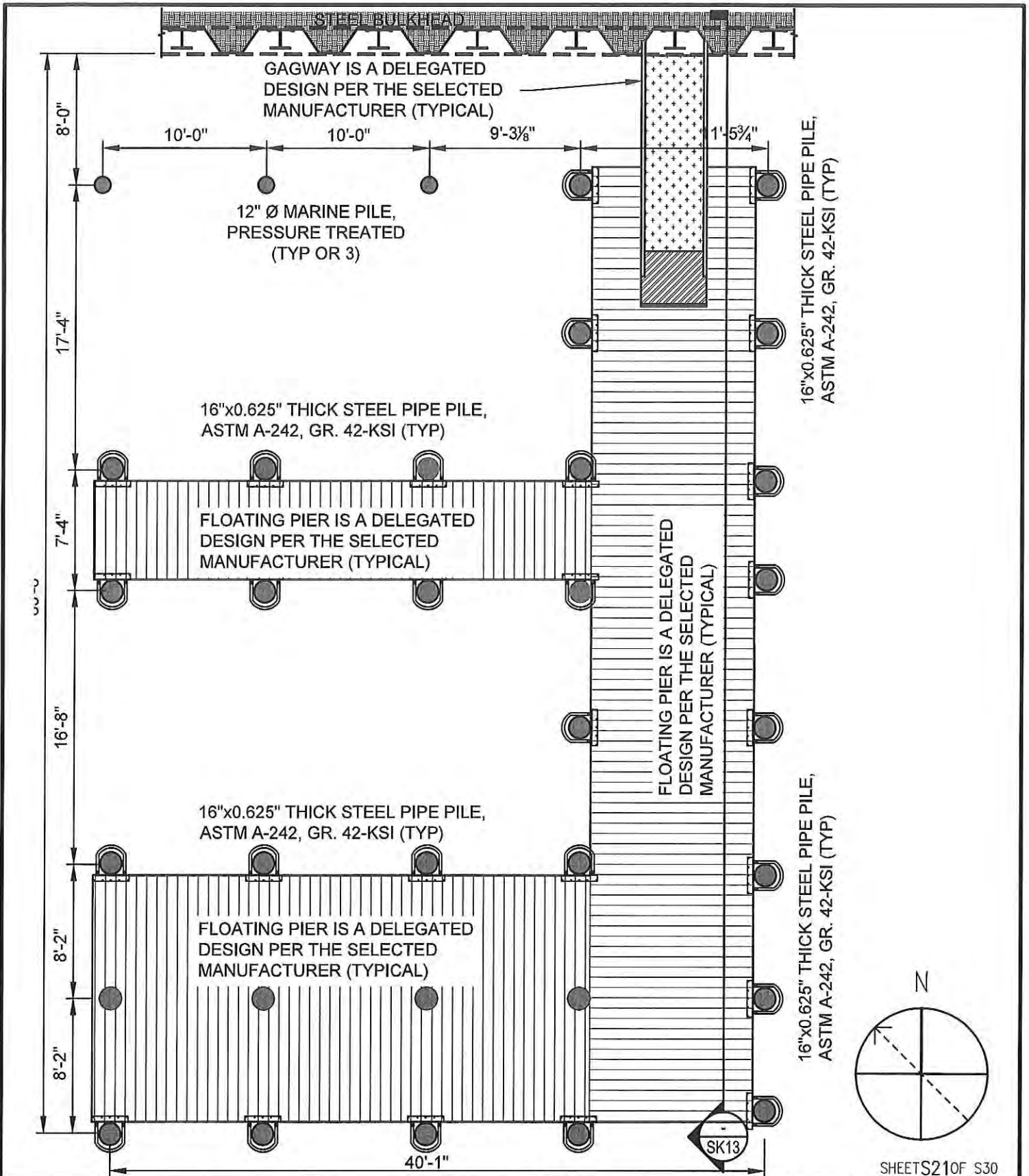
SCALE
3/4"=1'-0"

DESIGNED BY
PDB

DRAWN BY
PDB

TYPICAL CONNECTION DETAILS

PROJECT: REPLACEMENT BULKHEADS, PIERS, PILES, REVETMENT
PHASE 1 MARINE IMPROVEMENT PROJECT
AT
LOVE POINT STATE PARK
FOR STATE OF MD DNR, 580 TAYLOR AVE E-4, QUEEN ANNE'S COUNTY,
ANNAPOLIS, MD 21401



SHEETS210F S30



ENGINEERS
PLANNERS
SCIENTISTS
CONSTRUCTION MANAGERS

936 RIDGEBROOK ROAD
SPARKS, MARYLAND 21152
TELEPHONE: (410) 316-7800
FAX: (410) 316-7818

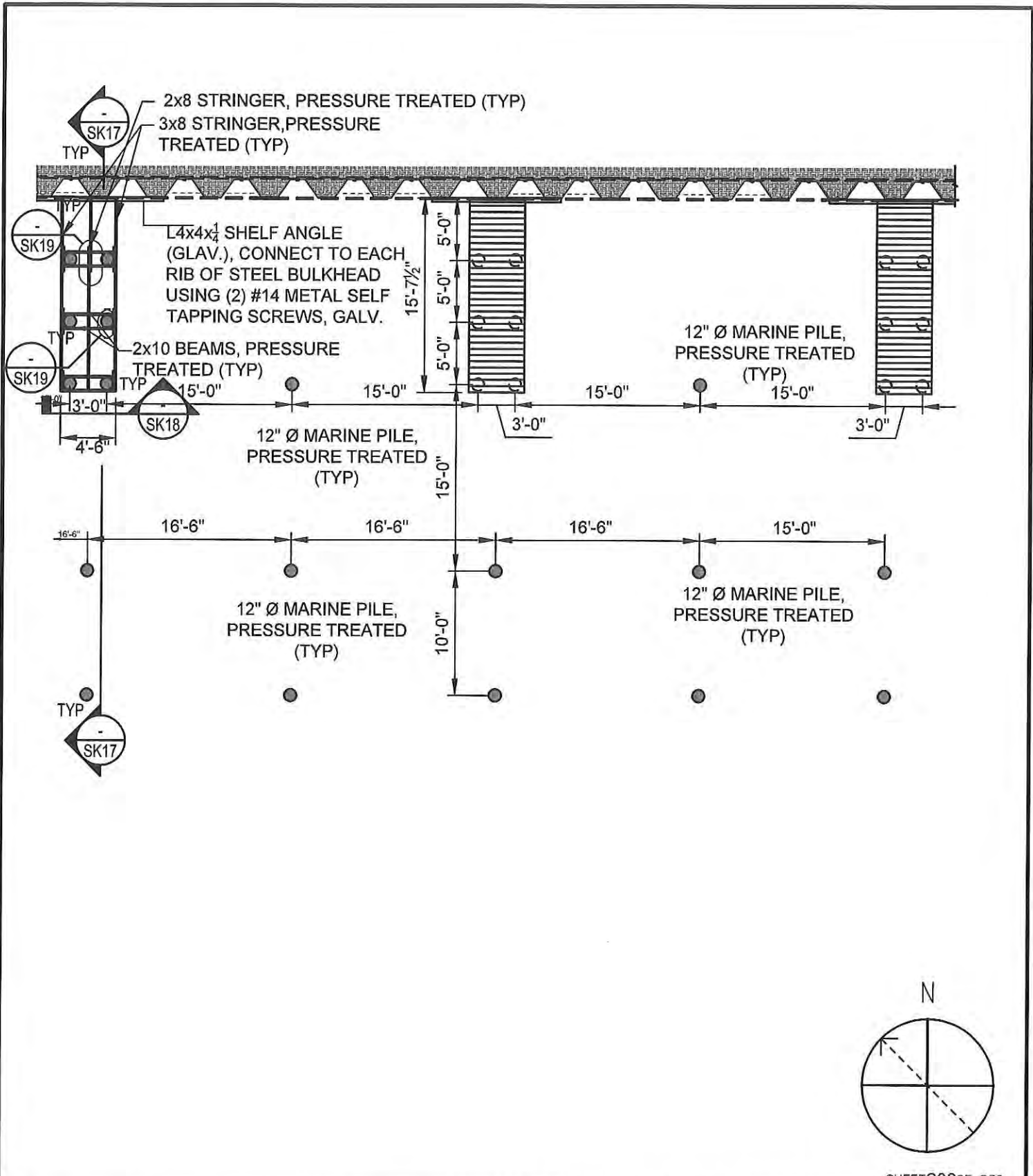
DATE
04/13/2022

SCALE
1/8"=1'-0"

DESIGNED BY
PDB

DRAWN BY
PDB

DNR-NRP SLIPS PARTIAL
PLAN
PROJECT: REPLACEMENT BULKHEADS, PIERS, PILES, REVETMENT
PHASE 1 MARINE IMPROVEMENT PROJECT
AT
LOVE POINT STATE PARK
FOR STATE OF MD DNR, 580 TAYLOR AVE E-4, QUEEN ANNE'S COUNTY,
ANNAPOLIS, MD 21401



SHEETS22OF S30

KCI
TECHNOLOGIES

ENGINEERS
PLANNERS
SCIENTISTS
CONSTRUCTION MANAGERS

936 RIDGEBROOK ROAD
SPARKS, MARYLAND 21152
TELEPHONE: (410) 316-7800
FAX: (410) 316-7818

DATE
04/13/2022

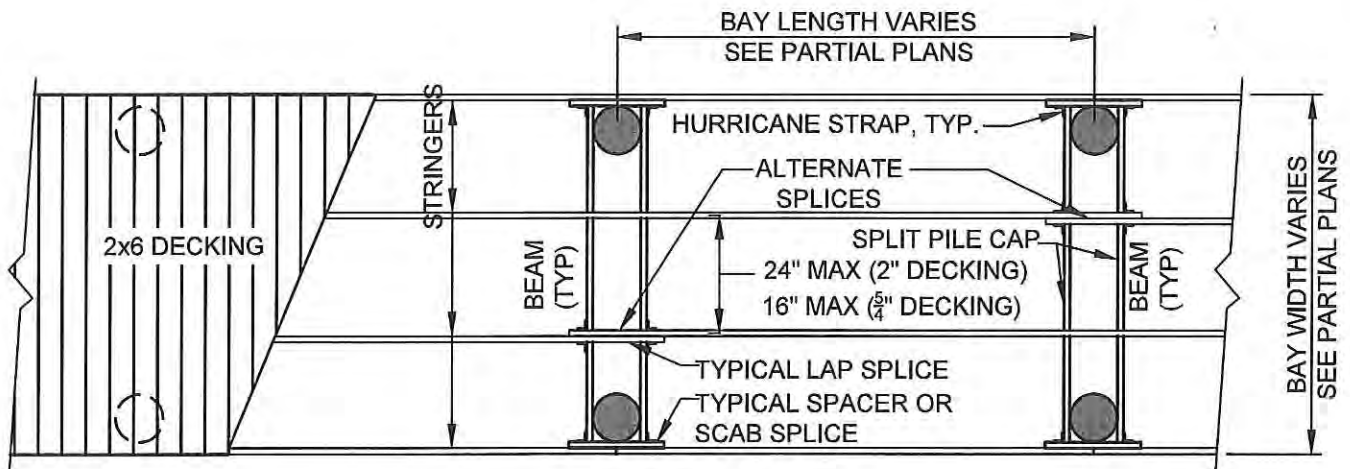
SCALE
3/32"=1'-0"

DESIGNED BY
PDB

DRAWN BY
PDB

COMMERCIAL SLIPS PARTIAL PLAN

PROJECT: REPLACEMENT BULKHEADS, PIERS, PILES, REVETMENT
PHASE 1 MARINE IMPROVEMENT PROJECT
AT
LOVE POINT STATE PARK
FOR STATE OF MD DNR, 580 TAYLOR AVE E-4, QUEEN ANNE'S COUNTY,
ANNAPOLIS, MD 21401



SHEETS230F S30



ENGINEERS
 PLANNERS
 SCIENTISTS
 CONSTRUCTION MANAGERS

936 RIDGEBROOK ROAD
 SPARKS, MARYLAND 21152
 TELEPHONE: (410) 316-7800
 FAX: (410) 316-7818

DATE
 04/13/2022

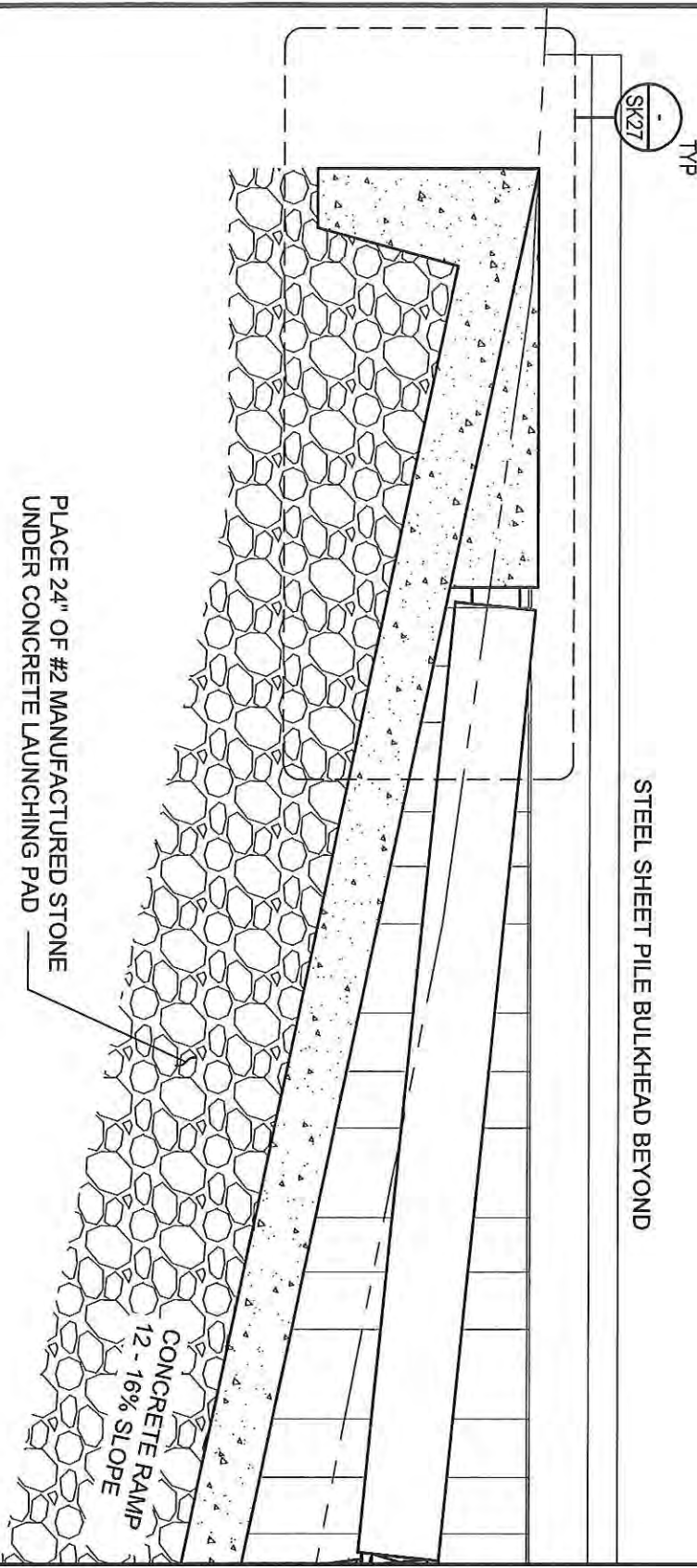
SCALE
 1/4"=1'-0"

DESIGNED BY
 PDB

DRAWN BY
 PDB

TYPICAL PIER FRAMING PLAN

PROJECT: REPLACEMENT BULKHEADS, PIERS, PILES, REVETMENT
 PHASE 1 MARINE IMPROVEMENT PROJECT
 AT
LOVE POINT STATE PARK
 FOR STATE OF MD DNR, 580 TAYLOR AVE E-4, QUEEN ANNE'S COUNTY,
 ANNAPOLIS, MD 21401



MATCHLINE A-A

SHEETS24OF S30



ENGINEERS
PLANNERS
SCIENTISTS
CONSTRUCTION MANAGERS

936 RIDGEBROOK ROAD
SPARKS, MARYLAND 21152
TELEPHONE: (410) 316-7800
FAX: (410) 316-7818

DATE
04/13/2022

SCALE
1/2"=1'-0"

DESIGNED BY
PDB

DRAWN BY
PDB

**BOAT LAUNCHING PAD AND
FLOATING PIER SECTION**
PROJECT: REPLACEMENT BULKHEADS, PIERS, PILES, REVETMENT
PHASE 1 MARINE IMPROVEMENT PROJECT
AT
LOVE POINT STATE PARK
FOR STATE OF MD DNR, 580 TAYLOR AVE E-4, QUEEN ANNE'S COUNTY,
ANNAPOLIS, MD 21401