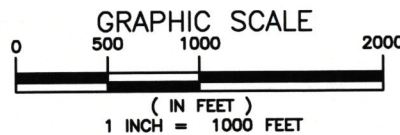


MAP DATA © OPEN STREETMAP (AND) CONTRIBUTORS, CC-BY-SA

**CHALK POINT GENERATING STATION
INTAKE CANAL DREDGING
AT
PATUXENT RIVER
PRINCE GEORGE'S COUNTY**

**APPL. BY: CHALK POINT GENERATING STATION
VICINITY MAP**

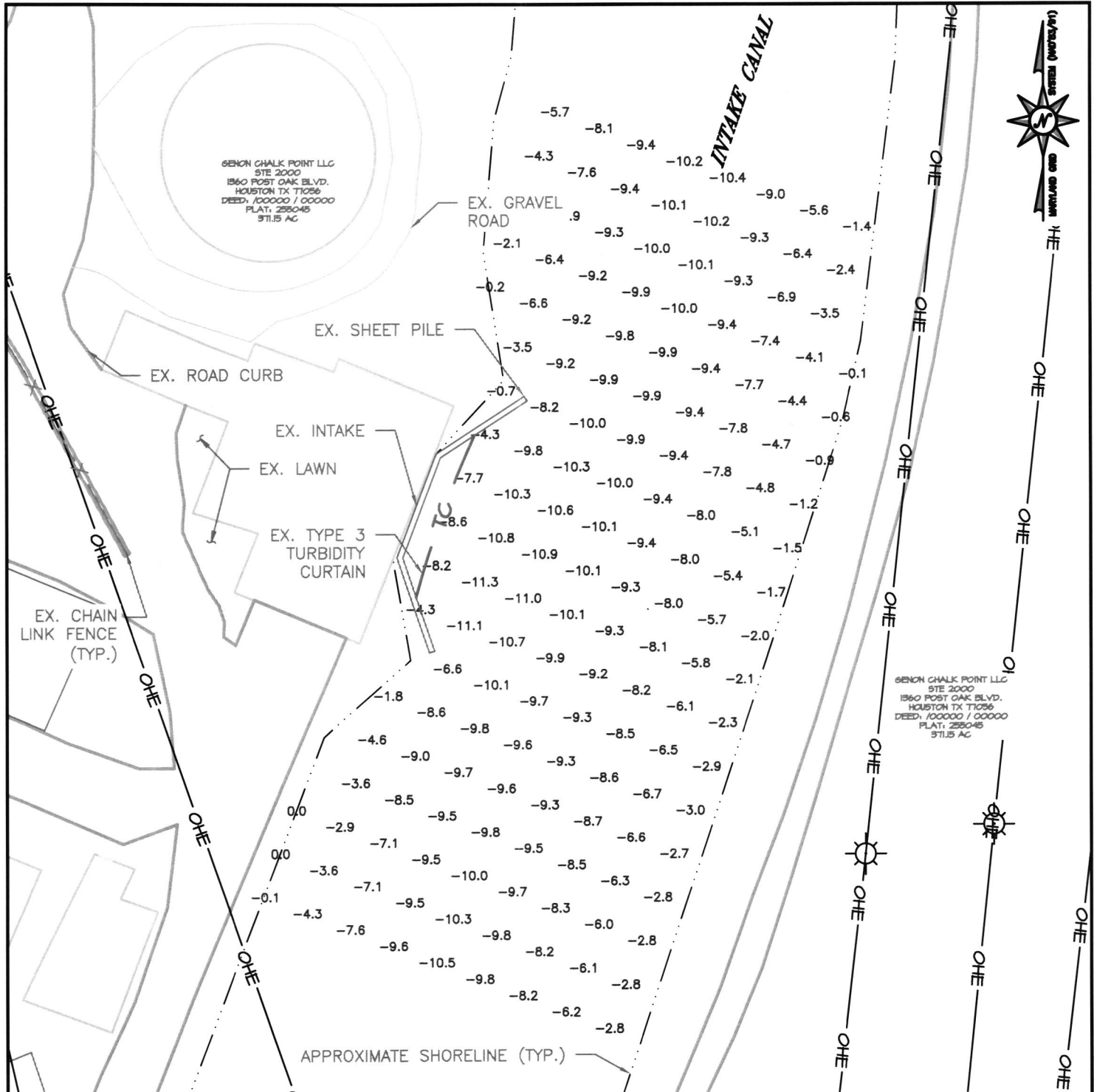
DATE: NOVEMBER 2025 SHEET 1 OF 7



Bayland
Consultants & Designers, Inc.
"Integrating Engineering and Environment"

7455 New Ridge Road, Suite T Phone: (410) 694-9401
Hanover, Maryland 21076 Fax: (410) 694-9405
www.baylandinc.com

Z:\B_1903_CHALK_POINT_INTAKE_CANAL_DREDGING\CAD Files\Sheet Files\PA\B_1903_PP401.dwg



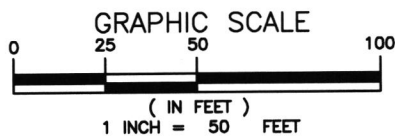
GENON CHALK POINT LLC
 STE 2000
 1560 POST OAK BLVD.
 HOUSTON TX 77056
 DEED: /00000 / 00000
 PLAT: 255045
 371.5 AC

GENON CHALK POINT LLC
 STE 2000
 1560 POST OAK BLVD.
 HOUSTON TX 77056
 DEED: /00000 / 00000
 PLAT: 255045
 371.5 AC

**CHALK POINT GENERATING STATION
 INTAKE CANAL DREDGING
 AT
 PATUXENT RIVER
 PRINCE GEORGE'S COUNTY**

APPL. BY: CHALK POINT GENERATING STATION
EXISTING CONDITIONS
 DATE: NOVEMBER 2025 SHEET 2 OF 7

LEGEND	
-3.6	SOUNDINGS
	EXISTING POLE
	EXISTING SHORELINE
	EXISTING TURBIDITY CURTAIN
	EXISTING OVERHEAD LINES



NOTE:
 BASEMAP TAKEN FROM PRINCE GEORGE'S COUNTY 2023 PLANIMETRICS AND IMAGERY.

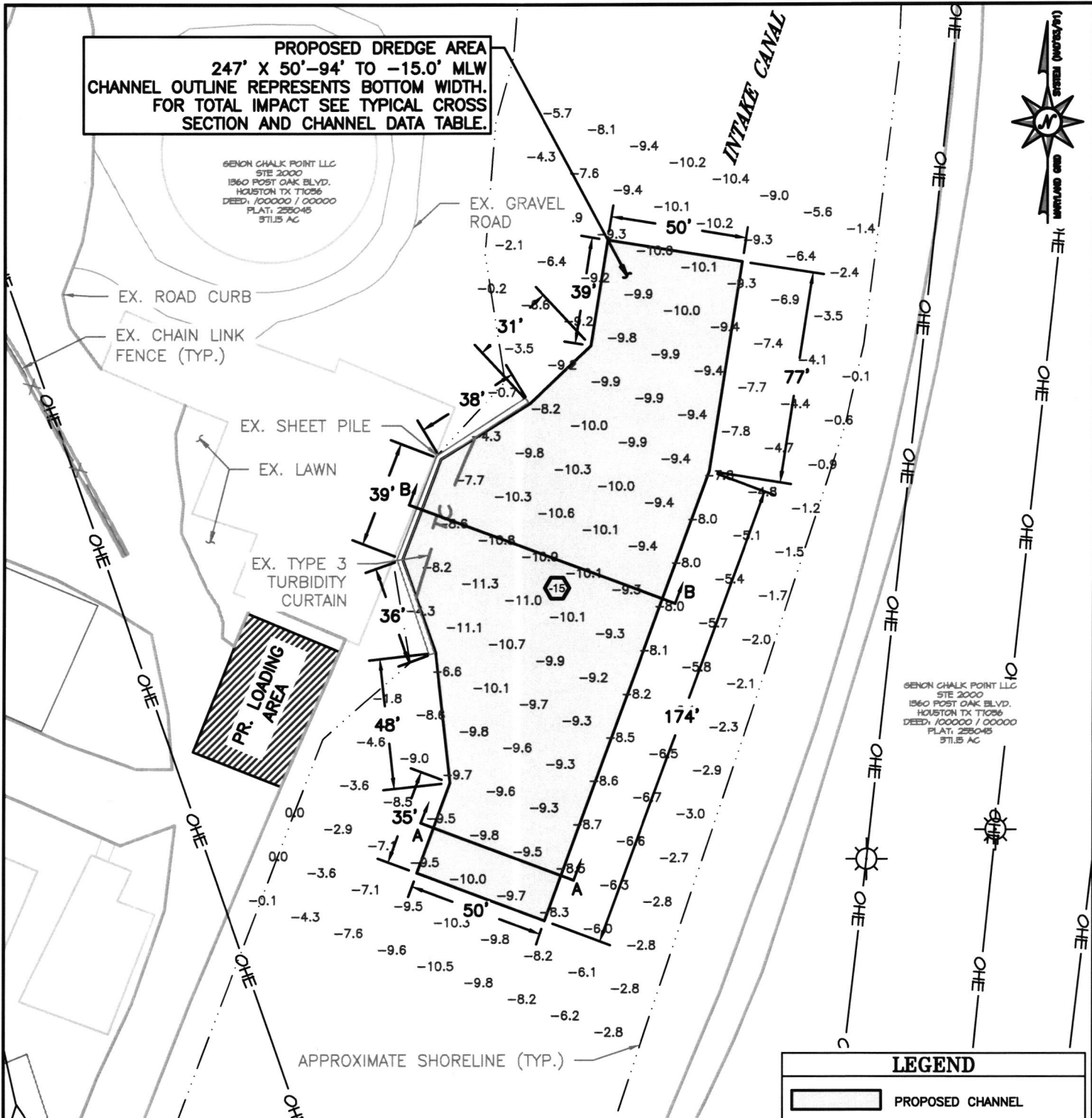
Bayland
 Consultants & Designers, Inc.
 "Integrating Engineering and Environment"

7455 New Ridge Road, Suite T Phone: (410) 694-9401
 Hanover, Maryland 21076 Fax: (410) 694-9405
 www.baylandinc.com

Z:\B_51903_CHALK_POINT_INTAKE_CANAL_DREDGING\CAD Files\Sheet Files\JPA_B_51903_JPA02.dwg

PROPOSED DREDGE AREA
247' X 50'-94' TO -15.0' MLW
CHANNEL OUTLINE REPRESENTS BOTTOM WIDTH.
FOR TOTAL IMPACT SEE TYPICAL CROSS
SECTION AND CHANNEL DATA TABLE.

GENON CHALK POINT LLC
 SITE 2000
 1860 POST OAK BLVD.
 HOUSTON TX 77056
 DEED: 100000 / 00000
 PLAT: 285045
 571.5 AC



GENON CHALK POINT LLC
 SITE 2000
 1860 POST OAK BLVD.
 HOUSTON TX 77056
 DEED: 100000 / 00000
 PLAT: 285045
 571.5 AC

CHALK POINT GENERATING STATION
INTAKE CANAL DREDGING
AT
PATUXENT RIVER
PRINCE GEORGE'S COUNTY

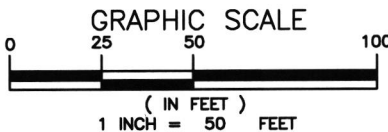
APPL. BY: CHALK POINT GENERATING STATION

CHANNEL PLANS

DATE: NOVEMBER 2025 SHEET 3 OF 7

LEGEND

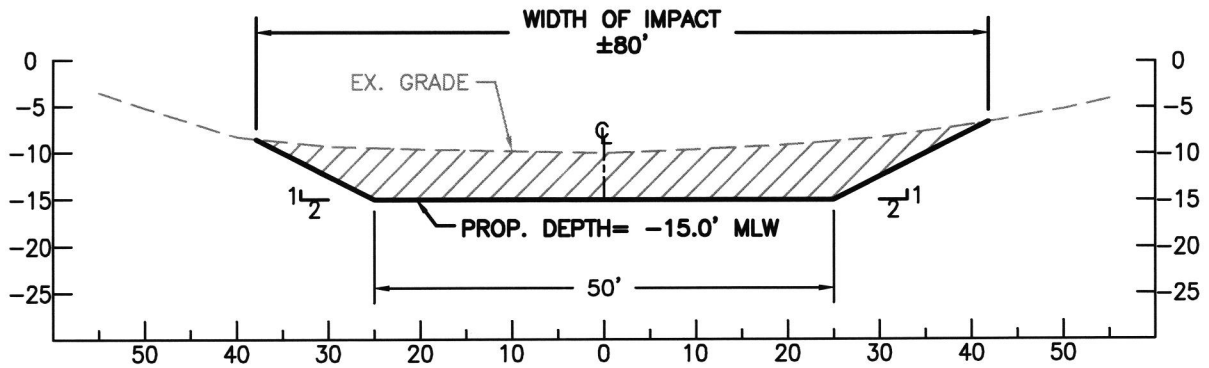
- PROPOSED CHANNEL
- SOUNDINGS
- PROPOSED CHANNEL DEPTH
- EXISTING POLE
- EXISTING SHORELINE
- EXISTING TURBIDITY CURTAIN
- EXISTING OVERHEAD LINES



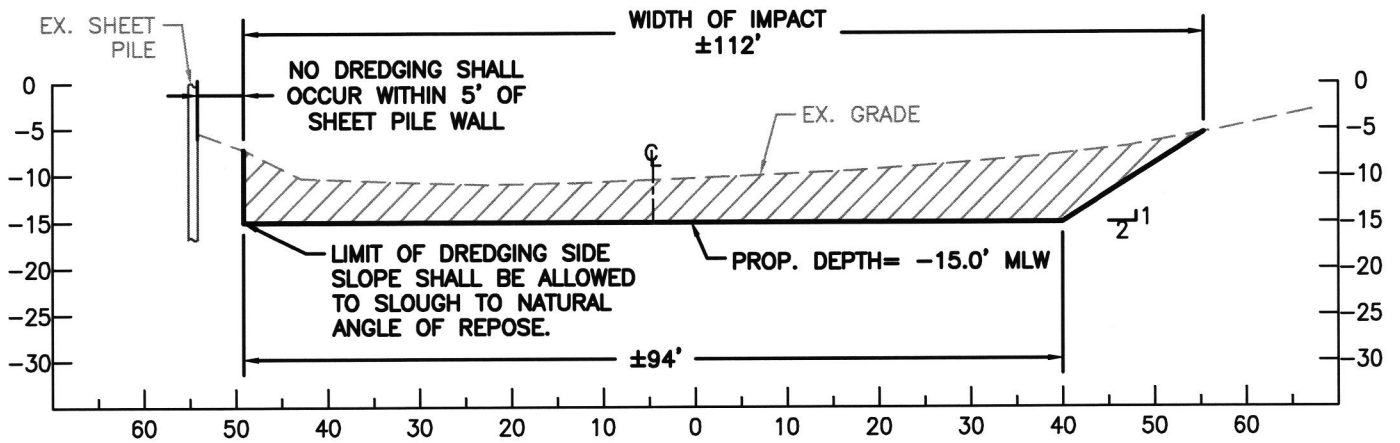
NOTE:
 BASEMAP TAKEN FROM PRINCE GEORGE'S
 COUNTY 2023 PLANIMETRICS AND IMAGERY.

Bayland
 Consultants & Designers, Inc.
 "Integrating Engineering and Environment"

7455 New Ridge Road, Suite T Phone: (410) 694-9401
 Hanover, Maryland 21076 Fax: (410) 694-9405
 www.baylandinc.com



SECTION A-A
SCALE: 1" = 20'



SECTION B-B
SCALE: 1" = 20'

CHALK POINT GENERATING STATION
INTAKE CANAL DREDGING
AT
PATUXENT RIVER
PRINCE GEORGE'S COUNTY

APPL. BY: CHALK POINT GENERATING STATION

CROSS SECTIONS

DATE: NOVEMBER 2025 SHEET 4 OF 7

Bayland
Consultants & Designers, Inc.
"Integrating Engineering and Environment"

7455 New Ridge Road, Suite T Phone: (410) 694-9401
Hanover, Maryland 21076 Fax: (410) 694-9405
www.baylandinc.com

Z:\B_151903_CHALK_POINT_INTAKE_CANAL_DREDGING\CAD Files\Sheet Files\JPA\B_151903_JPA04.dwg

CHANNEL DETAILS			
LENGTH (FT)	WIDTH (FT)	DEPTH (FT)	VOLUME (CY)
247	50-94	-15.0	4,208
TOTAL MAIN CHANNEL LENGTH			247 LF
TOTAL MAIN CHANNEL VOLUME			4,208 CY
TOTAL MAIN CHANNEL AREA OF IMPACT			24,614 SF = 0.57 AC
TOTAL NEW AREA OF DREDGING			24,614 SF = 0.57 AC
TOTAL MAIN CHANNEL AREA OF IMPACT TO SAV			0 SF = 0.0 AC

NOTES:

1. BASEMAP COMPILED FROM PRINCE GEORGE'S COUNTY 2023 PLANIMETRICS AND IMAGERY.
2. TIDAL RANGE IS 1.6 FEET.
3. BATHYMETRY FROM BAYLAND SURVEY DATED NOVEMBER 06, 2024.
4. NO SUBMERGED AQUATIC VEGETATION (SAV) HAS BEEN OBSERVED WITHIN 500 YARDS OF CHANNEL PLANS FOR THE PAST 5 YEARS ACCORDING TO VIMS SAV MONITORING DATA.
5. SOUNDINGS ARE IN FEET AND REFER TO MLW.
6. THESE ARE PERMIT DRAWINGS ONLY. DESIGN DRAWINGS WILL BE PREPARED SEPARATELY.

CHALK POINT GENERATING STATION
 INTAKE CANAL DREDGING
 AT
 PATUXENT RIVER
 PRINCE GEORGE'S COUNTY

APPL. BY: CHALK POINT GENERATING STATION

CHANNEL DETAILS

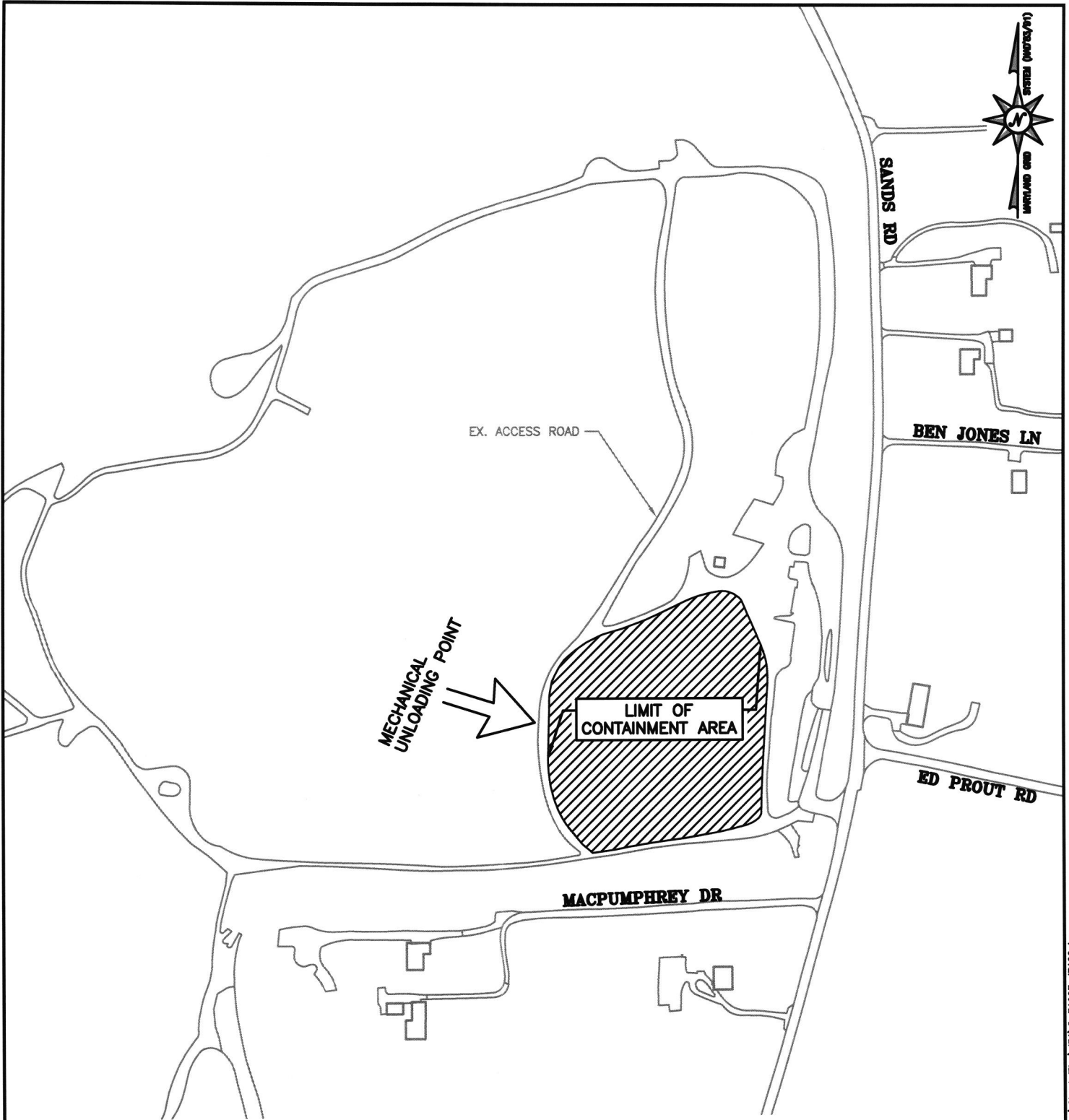
DATE: NOVEMBER 2025 SHEET 5 OF 7



Bayland
 Consultants & Designers, Inc.
"Integrating Engineering and Environment"

7455 New Ridge Road, Suite T Phone: (410) 694-9401
 Hanover, Maryland 21076 Fax: (410) 694-9405
 www.baylandinc.com

Z:\B_51903_CHALK_POINT_INTAKE_CANAL_DREDGING\CAD Files\Sheet Files\JPA\B_51903_JPA05.dwg

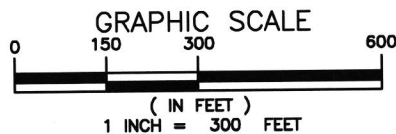


CHALK POINT GENERATING STATION
 INTAKE CANAL DREDGING
 AT
 PATUXENT RIVER
 PRINCE GEORGE'S COUNTY

APPL. BY: CHALK POINT GENERATING STATION

WESTPORT DMP SHEET

DATE: NOVEMBER 2025 SHEET 6 OF 7



NOTE:
 BASEMAP COMPILED FROM 2023 ANNE
 ARUNDEL PLANIMETRICS AND 2023 IMAGERY.

Bayland
 Consultants & Designers, Inc.
 "Integrating Engineering and Environment"

7455 New Ridge Road, Suite T Phone: (410) 694-9401
 Hanover, Maryland 21076 Fax: (410) 694-9405
 www.baylandinc.com

Z:\B_51903_CHALK_POINT_INTAKE_CANAL_DREDGING\CAD Files\Sheet Files\JPA\B_51903_JPA06.dwg



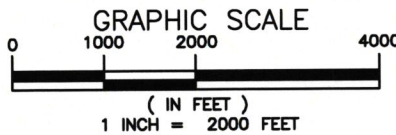
CRANDELL DMP SITE



**CHALK POINT GENERATING STATION
INTAKE CANAL DREDGING
AT
PATUXENT RIVER
PRINCE GEORGE'S COUNTY**

**APPL. BY: CHALK POINT GENERATING STATION
CRANDELL DMP SITE**

DATE: NOVEMBER 2025 SHEET 7 OF 7



NOTE:
BASEMAP COMPILED FROM 2016 ANNE
ARUNDEL PLANIMETRICS AND 2016 IMAGERY.

Bayland
Consultants & Designers, Inc.
"Integrating Engineering and Environment"
 7455 New Ridge Road, Suite T Phone: (410) 694-9401
 Hanover, Maryland 21076 Fax: (410) 694-9405
 www.baylandinc.com