



US Army Corps
of Engineers
Baltimore District

May 23, 2022, Revised

PUBLIC NOTICE OF AVAILABILITY

Ocean City Harbor & Inlet Project: Worcester County, Maryland Proposed Navigation Improvements Draft Finding of No Significant Impacts and Environmental Assessment

ALL INTERESTED PARTIES: Baltimore District, US Army Corps of Engineers (USACE), is proposing to realign approximately 3,360 linear feet of the Ocean City Inlet navigation channel to immediately south of its current position where most water is already at the federally-authorized 10-foot depth. Dredging of inlet bottom sand would be required locally. USACE also proposes to construct two 300-foot long rock structures to close gaps in the existing breakwaters at the north end of Assateague Island (600 feet total) and to construct a 150-foot long jetty extending to the northwest into Sinepuxent Bay. The National Park Service is a cooperating agency for preparation of the draft Environmental Assessment (EA). Worcester County, MD, and the Maryland Department of Natural Resources (MD DNR) are the local project sponsors. The navigation improvements are proposed under Section 107 of the Continuing Authorities Program (CAP).

From 2019 to 2021, USACE investigated physical environmental conditions, conducted extensive public and agency coordination, formulated alternatives, and modeled effects of alternatives using sediment and hydrologic computer models. The proposed navigation improvements are based on these economic, engineering, and environmental analyses.

In compliance with the National Environmental Policy Act, USACE has prepared this draft EA and evaluated potential impacts of the proposed project on the human environment. Resource agency and public input was incorporated into the recommended alternative. All applicable environmental laws have been considered.

USACE requests comments regarding the draft EA and Finding of No Significant Impacts (FONSI) by June 26th. For federal and state agencies receiving a copy of this notice, we request that you provide comments concerning your resource responsibilities. The draft EA and FONSI are available at the USACE website: <http://www.nab.usace.army.mil/oceancity>. Comments can be submitted via email to: OceanCity107@usace.army.mil For additional information, you may also contact Chris Spaur at (410) 962-6134.

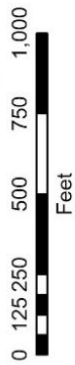
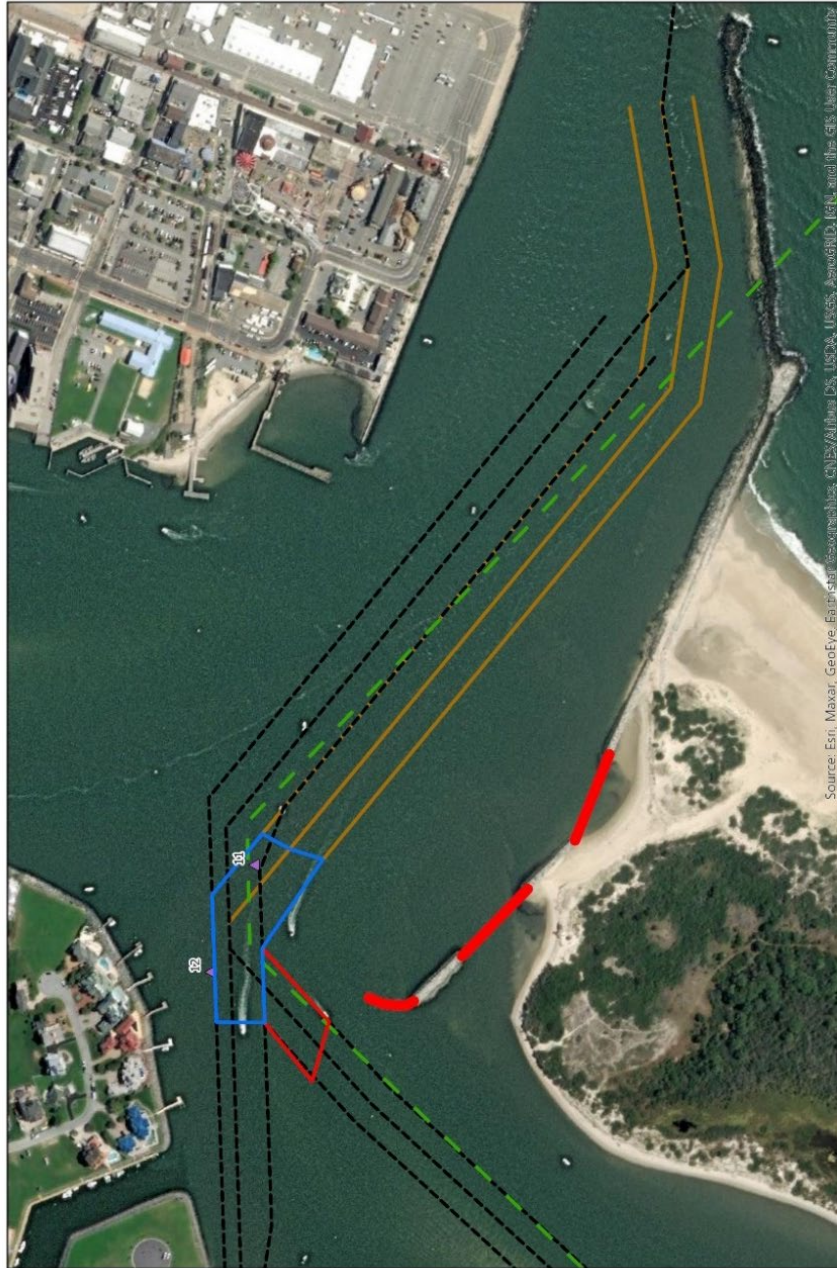
USACE is also undertaking a separate but related feasibility study in the vicinity under Section 204 of CAP. This separate effort, Ocean City, Maryland – Scour Hole: Beneficial Use of Dredged Material, is investigating excess shoreline and bottom erosion in Isle of Wight Bay near Homer Gudelsky Park, West Ocean City. A public notice announcing the Section 204 study was released in May 2018. USACE anticipates that a separate draft EA and feasibility report for that project will be available for public review and comment in summer 2022.

Daniel M. Bierly, P.E.
Chief, Civil Project Development Branch
Planning Division



US Army Corps
of Engineers
Baltimore District

PUBLIC NOTICE OF AVAILABILITY



- Proposed Breakwaters Extension and Spur
- Sinepuxent Bay Shoal Removal
- Inlet Channel Shoal Removal
- National Park Service Boundary
- Existing Channel Boundary
- Proposed Channel Boundary
- Buoys

