

TYLERTON - RHODES POINT

SUBAQUEOUS FORCE MAIN

CLEAN WATER PROJECT (SICWP)

SOMERSET COUNTY SANITARY DISTRICT

90% SUBMITTAL

DATE	
REVISIONS	
NO.	

GMB

GEORGE, MILES & BUHR, LLC

ARCHITECTS & ENGINEERS

SALISBURY • BALTIMORE • SEAFORD

206 WEST MAIN STREET

SALISBURY, MARYLAND 21801

410-742-3115, FAX 410-548-5790

www.gmbnet.com

TYLERTON - RHODES POINT
SUBAQUEOUS FORCE MAIN
CLEAN WATER PROJECT (SICWP)

SOMERSET COUNTY SANITARY DISTRICT

TITLE SHEET

SCALE : AS SHOWN	SHEET NO.
DESIGN BY : PAB	G-1
DRAWN BY : GMB	
CHECKED BY : -	
GMB FILE : 120099	
DATE : OCT. 2019	

© COPYRIGHT 2017 GEORGE, MILES & BUHR, LLC

LIST OF DRAWINGS

SHEET NO. - TITLE

GENERAL

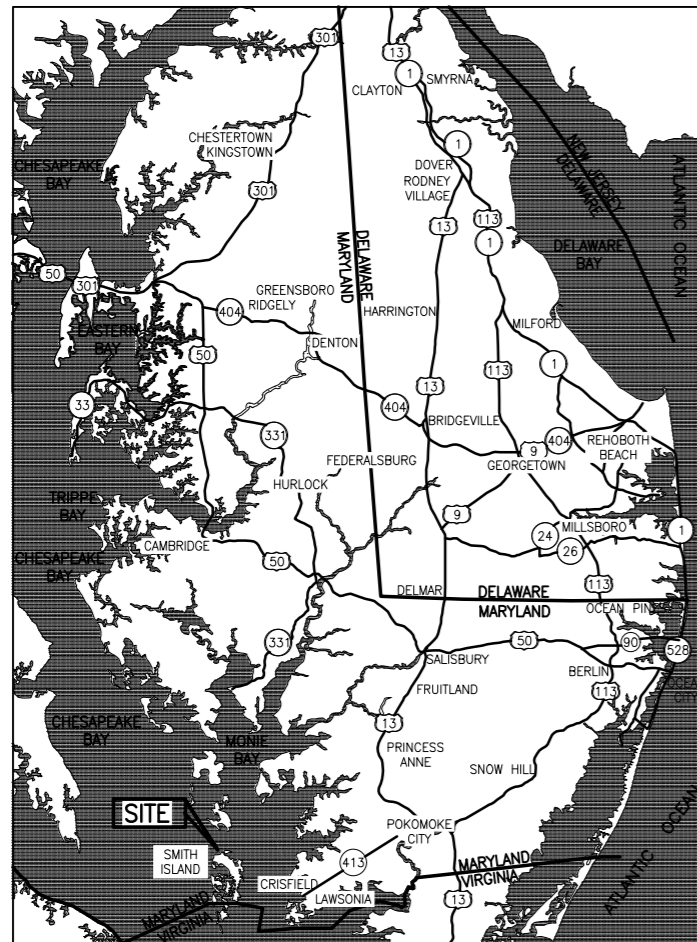
- G-1 - TITLE SHEET
- G-2 - GENERAL NOTES, LEGEND, AND ABBREVIATIONS
- G-3 - SOUTH OPTION KEY MAP
- G-4 - NORTH OPTION KEY MAP

PLANS & PROFILES

- C-1 - SOUTH OPTION PLAN & PROFILE
- C-2 - SOUTH OPTION PLAN & PROFILE
- C-3 - NORTH OPTION PLAN & PROFILE
- C-4 - NORTH OPTION PLAN & PROFILE
- C-5 - GRAVITY SEWER PLAN & PROFILE

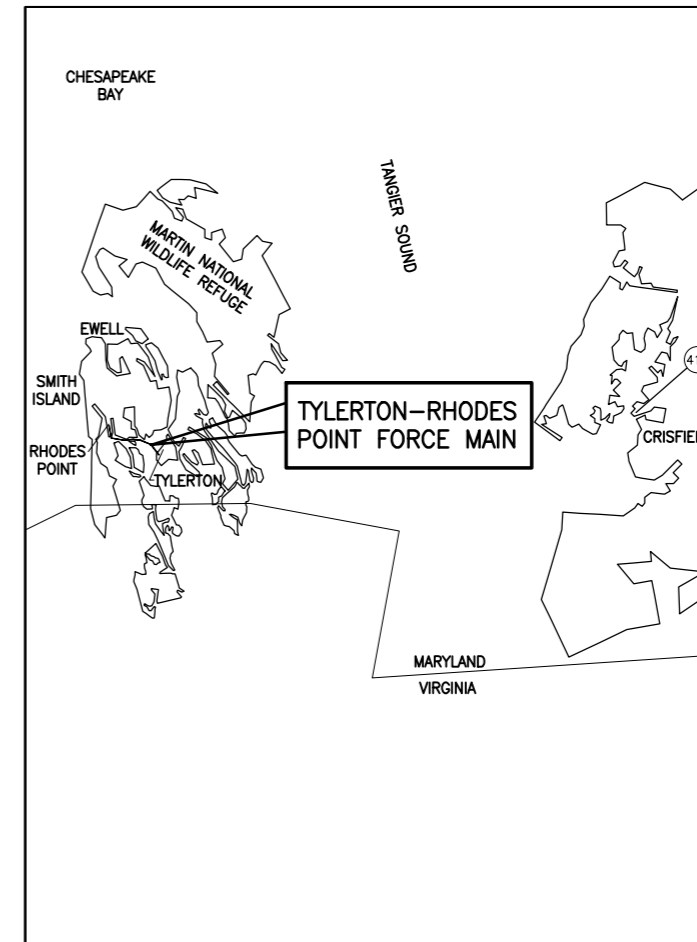
DETAILS

- C-6 - GRAVITY SEWER DETAILS
- C-7 - FORCE MAIN DETAILS



VICINITY MAP

SCALE: 1"=10 MILES



LOCATION MAP

NOT TO SCALE


GMB

GEORGE, MILES & BUHR, LLC
ARCHITECTS & ENGINEERS
SALISBURY • BALTIMORE • SEAFORD
206 WEST MAIN STREET
SALISBURY, MARYLAND 21801
410-742-3115, FAX 410-548-5790
www.gmbnet.com

NOVEMBER 2019

PLOT CODE
PLOT SIZE
PLOT AREA
PLOT PERIMETER
PLOT SCALE
PLOT DATE
PLOT TIME
PLOT USER
PLOT STATUS
PLOT COMMENTS

LEGEND

- | | |
|-------------------------|---|
| <u>EXISTING</u> | <u>LEGEND</u> |
| TOP OF CHANNEL | ---- |
| CENTER OF CHANNEL | ---- |
| OVERHEAD ELECTRIC | -----OHE----- |
| BURIED ELECTRIC | -----E-----E-----E----- |
| POWER POLE | Ø |
| CONTOUR | -----7----- |
| PROPERTY LINE | ----- |
| EDGE OF PAVE | -----PAVE OR CURB----- |
| GRAVITY SEWER & MANHOLE | -----●----- |
| PUMP STATION | ● P.S. |
| EXISTING BUILDING |  |
| <u>PROPOSED</u> | |
| FORCE MAIN | -----+-----
46+00 |
| MAN HOLE | ○ |
| AIR VALVE | ○
A.V. |

GENERAL NOTES

1. HYDROGRAPHIC SURVEY OF RHODES GUT PREFORMED BY CHESAPEAKE ENVIRONMENTAL MANAGEMENT (CEM) IN FEBRUARY 2017. VERTICAL ELEVATIONS PER NAVD 88 DATUM.
2. HORIZONTAL CONTROL BASED ON GRID NORTH NAD. 83 MARYLAND COORDINATE SYSTEM
3. PROPERTY LINE AND RIGHT-OF-WAY DATA WAS DERIVED FROM TAX MAPS, DEEDS, AND FROM FIELD SURVEYS BY CEM. LOCATIONS ARE APPROXIMATE ONLY. CONTRACTOR IS RESPONSIBLE FOR FINAL VERIFICATION OF ALL RIGHT-OF-WAYS AND PROPERTY LINES.
4. CONTRACTOR SHALL NOTIFY MISS UTILITY (800) 441-8355 AT LEAST TEN (10) WORKING DAYS, PRIOR TO ALL EXCAVATION ACTIVITIES. ALL LOCATES SHALL COVER ALL UNDERGROUND UTILITIES ON BOTH PRIVATE AND PUBLIC PROPERTIES IMPACTED BY CONSTRUCTION ACTIVITIES.
5. THE CONTRACTOR SHALL NOTIFY SOMERSET COUNTY SANITARY DISTRICT (410) 651-3831 AT LEAST FIVE DAYS BEFORE STARTING WORK.
6. THESE DRAWINGS DO NOT INCLUDE NECESSARY ELEMENTS OF CONSTRUCTION SAFETY. ALL CONSTRUCTION MUST BE COMPLETED IN ACCORDANCE WITH THE RULES AND REGULATIONS OF THE OCCUPATIONAL SAFETY AND HEALTH ACT, AND ALL FEDERAL, STATE AND LOCAL REQUIREMENTS.
7. THE CONTRACTOR SHALL PROVIDE ALL NECESSARY STAKE OUT OF LINE, GRADE AND UTILITY WORK BY QUALIFIED SURVEY PERSONNEL.
8. THESE DRAWINGS SHOW INFORMATION REGARDING UNDERGROUND UTILITIES WHICH EXIST OR MAY EXIST ALONG THE LINES OF WORK. THE LOCATION OF THE UTILITIES SHOWN HAS BEEN PROVIDED FROM THE BEST AVAILABLE RECORDS AND SHALL BE VERIFIED BY THE CONTRACTOR TO HIS SATISFACTION PRIOR TO ANY CONSTRUCTION. THE OWNER AND ENGINEER DISCLAIM ANY RESPONSIBILITY FOR THE ACCURACY OR COMPLETENESS OF SAID INFORMATION. IF THE CONTRACTOR RELIES ON SAID INFORMATION, HE DOES SO AT HIS OWN RISK. THE GIVING OF THE INFORMATION ON THESE DRAWINGS DOES NOT RELIEVE THE CONTRACTOR OF HIS OBLIGATIONS TO SUPPORT AND PROTECT ALL EXISTING UTILITIES AND APPURTENANCES.
9. THE CONTRACTOR SHALL VERIFY ALL EXISTING PIPE DEPTHS AND LOCATIONS PRIOR TO CONNECTION WITH PROPOSED PIPING.
10. THE CONTRACTOR SHALL PROTECT ALL UTILITIES DURING CONSTRUCTION. ANY UTILITY DAMAGED SHALL BE PROMPTLY AND FULLY RESTORED TO THE SATISFACTION OF THE UTILITY COMPANY AT THE CONTRACTOR'S EXPENSE.
11. CONTRACTOR TO PROTECT EXISTING PROPERTY MARKERS FROM BEING DISTURBED. IF A DISTURBANCE OCCURS, REPLACEMENT MUST BE DONE BY A LICENSED LAND SURVEYOR AT THE CONTRACTOR'S EXPENSE.
12. CONTRACTOR IS RESPONSIBLE FOR SECURING AND PROTECTING UTILITY POLES BEFORE AND DURING CONSTRUCTION ACTIVITIES. COORDINATE WITH ACCOMACK-NORTHAMPTON ELECTRIC COOPERATIVE BEFORE WORKING NEAR POLES. COST SHALL BE INCIDENTAL TO OTHER BID ITEMS. CONTRACTOR SHALL HAVE NO CLAIM FOR ADDITIONAL WORK ASSOCIATED WITH SECURING UTILITY POLES.
13. THE CONTRACTOR SHALL COMPLY WITH THE REQUIREMENTS OF ALL PERMITS SECURED, WHICH TAKE PRECEDENCE OVER SPECIFICATIONS.
14. CONTRACTOR TO VERIFY ALL ELEVATIONS AGAINST A PREVIOUSLY CONSTRUCTED POINT OF KNOWN ELEVATION BEFORE CONSTRUCTION.
15. THE CONTRACTOR SHALL PROVIDE FITTINGS AS SHOWN ON THE PLAN AND PROFILES OR AS REQUIRED TO CONFIRM TO FINAL LOCATION AND GRADE.
16. THE CONTRACTOR SHALL COORDINATE WITH THE ENGINEER TO INSURE THAT CONSTRUCTION WILL NOT INTERFERE WITH ANY EXISTING UTILITY, PUBLIC OR PRIVATE, WITHOUT THE UTILITY OWNER'S WRITTEN CONSENT.
17. ALL DISTURBED AREAS SHALL BE SEEDED, GRADED AND FERTILIZED UPON COMPETITION OF LAND DISTURBANCE

90% SUBMITTAL

[illegible]

GMB
GEORGE, MILES & BUHR, LLC
ARCHITECTS & ENGINEERS
SAUSBURY • BALTIMORE • SEABOARD
206 WEST MAIN STREET
SAUSBURY, MARYLAND 21801
410-742-3715, FAX 410-548-5790
www.gmbnet.com

TYLERTON - RHODES POINT
SUBAQUEOUS FORCE MAIN
CLEAN WATER PROJECT (SICWP)

SOMERSET COUNTY SANITARY DISTRICT

GENERAL NOTES LEGEND AND ABBREVIATIONS

SCALE : AS SHOWN	SHEET NO. G-2
DESIGN BY : PAB	
DRAWN BY : CNH	
CHECKED BY : -	
GMB FILE : 120099	
DATE : OCT. 2019	

PLOT CODE
PBA-DWG
2014 INCHES (25mm)

PBA-BLUE
2007 INCHES (25mm)

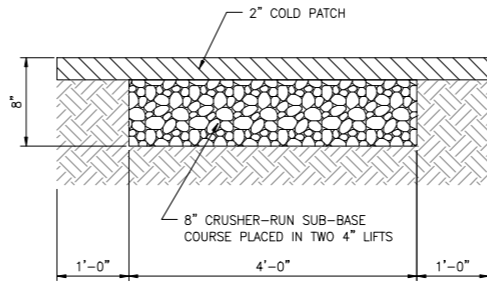
PBA-MAGENTA
2007 INCHES (25mm)

PBA-RED
200 INCHES (25mm)

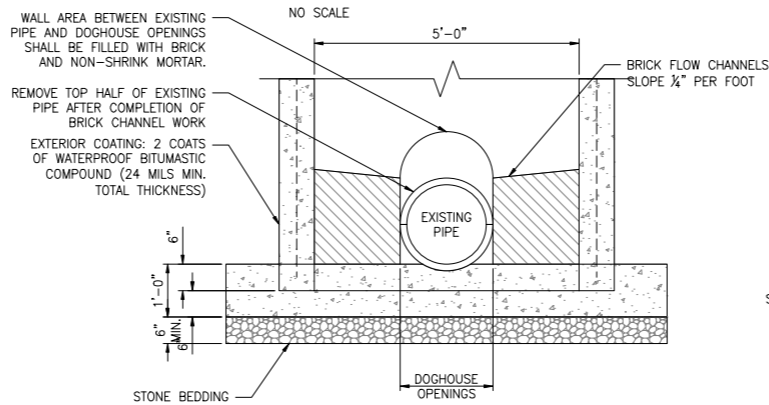
PBA-YELLOW
2007 INCHES (25mm)

PBA-GREEN
2010 INCHES (25mm)

PBA-WHITE
200 INCHES (25mm)

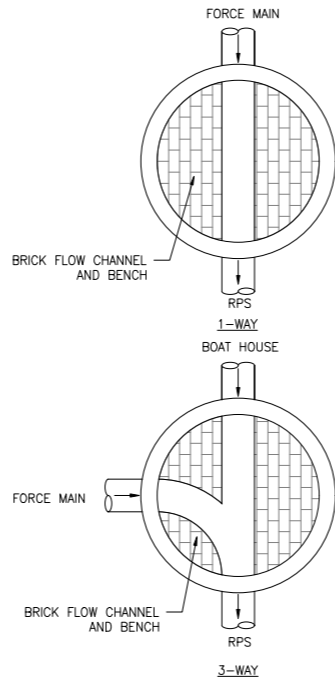


BITUMINOUS PAVEMENT DETAIL
NO SCALE

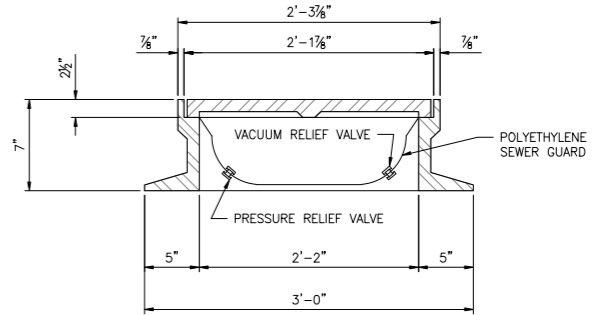
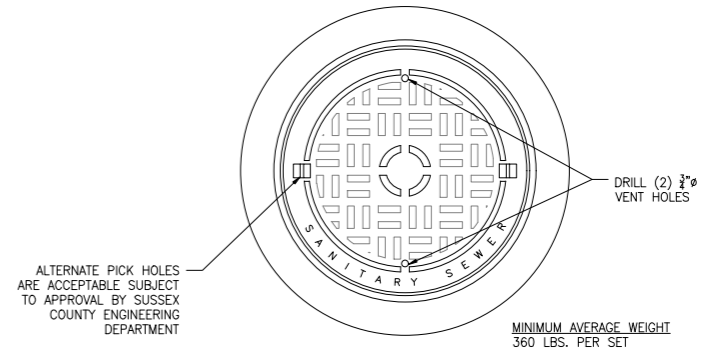


- NOTES:
1. REFER TO TYPICAL MANHOLE DETAIL.
 2. CONCRETE COMPRESSIVE STRENGTH SHALL BE 4,000 P.S.I.
 3. MANHOLE TO CONFORM TO ASTM C-478, LATEST REVISION.

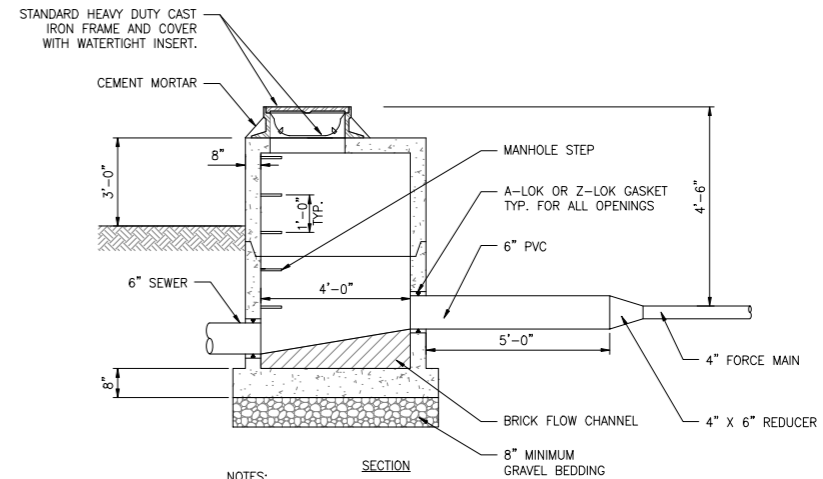
DOGHOUSE MANHOLE DETAIL
NO SCALE



FLOW CHANNEL
NO SCALE

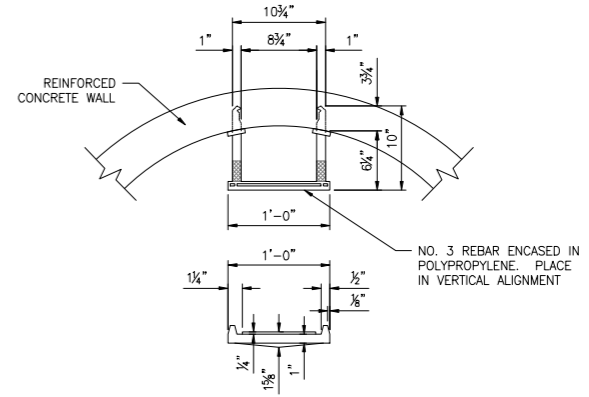


MANHOLE FRAME AND COVER DETAIL
NO SCALE



- NOTES:
1. SEE GRAVITY SEWER PROFILES FOR MANHOLE ELEVATIONS & INVERTS.

FORCE MAIN DISCHARGE MANHOLE
NO SCALE



MANHOLE STEP DETAIL
NO SCALE

90% SUBMITTAL

DATE	
REVISIONS	
NO.	

GMB
GEORGE, MILES & BUHR, LLC
ARCHITECTS & ENGINEERS
SALISBURY • BALTIMORE • SEAFORD
206 WEST MAIN STREET
SALISBURY, MARYLAND 21801
410-742-3115, FAX 410-548-5790
www.gmbnet.com

TYLERTON - RHODES POINT
SUBAQUEOUS FORCE MAIN
CLEAN WATER PROJECT (SICWP)

SOMERSET COUNTY SANITARY DISTRICT

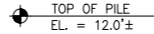
GRAVITY SEWER
DETAILS

SCALE : AS SHOWN	SHEET NO.
DESIGN BY : PAB	
DRAWN BY : GMB	
CHECKED BY : -	
GMB FILE : 120099	
DATE : OCT. 2019	

C-6



SCALE: $\frac{3}{4}" = 1'-0"$



SCALE: $\frac{3}{4}" = 1'-0"$

1
C-7

1. TIMBER PILES SHALL BE SOUTHERN
CLASS "B". PILES SHALL BE DRIVEN
DAMAGED PILES SHALL BE REMOVED

1. TIMBER PILES SHALL BE SOUTHERN PINE CONFORMING TO ASTM D-25, CLASS "B". PILES SHALL BE DRIVEN TO MINIMUM EMBEDMENT OF 20 FEET. DAMAGED PILES SHALL BE REMOVED AND REPLACED.
2. PILES SHALL BE PRESSURE TREATED TO A RETENTION OF NOT LESS THAN 2.5 LB PER CUBIC FOOT OF WOOD WITH CHROMATED COPPER ARSENATE (CCA) IN ACCORDANCE WITH AFWA USE CATEGORY UC4C.
3. BOLTS SHALL BE WEATHER-TUFF TIMBER BOLTS CONFORMING TO ASTM A307, ALL WASHERS SHALL BE 1/4" THICK N.Y.D. DOCK WASHERS AND NUTS SHALL BE HEAVY HEX TYPE UNLESS NOTED OTHERWISE. ALL NAILS SHALL BE RING SHANK OR ANNUAL NAILS AND IN ACCORDANCE WITH THE SIZES GIVEN IN THE CONTRACT DOCUMENTS.

[illegible]

REVISIONS

[illegible]

WYLERLERTON - RHODES POINT
SUBAQUEOUS FORCE MAIN
CLEAN WATER PROJECT (SICWP)

SOMERSET COUNTY SANITARY DISTRICT

FORCE MAIN DETAILS

SCALE : AS SHOWN	SHEET NO. <div style="font-size: 2em; text-align: center;">C-7</div>
DESIGN BY : PAB	
DRAWN BY : GNH	
CHECKED BY : -	
GMB FILE : 120099	
DATE : OCT. 2019	