

VICINITY MAP  
 SCALE: 1" = 1,000'

MONTGOMERY COUNTY, MARYLAND  
 DEPARTMENT OF ENVIRONMENTAL PROTECTION  
 WHEATON BRANCH FLOOD MITIGATION  
 CONTRACT NO.: 1011771  
 MONTGOMERY COUNTY, MARYLAND

**GPI** [www.gpinet.com](http://www.gpinet.com)

Engineering | Design | Planning | Construction Management

Greenman-Pedersen, Inc.  
 11000 Broken Land Parkway, Suite 500  
 Columbia, MD 21044  
 Tel: 410.880.3055

**WETLAND & WATERWAY IMPACT PLATES**

**PLATE 1 OF 11**

DATE: 04/2020  
 RVS'D:

SCALE: 1" = 1,000'

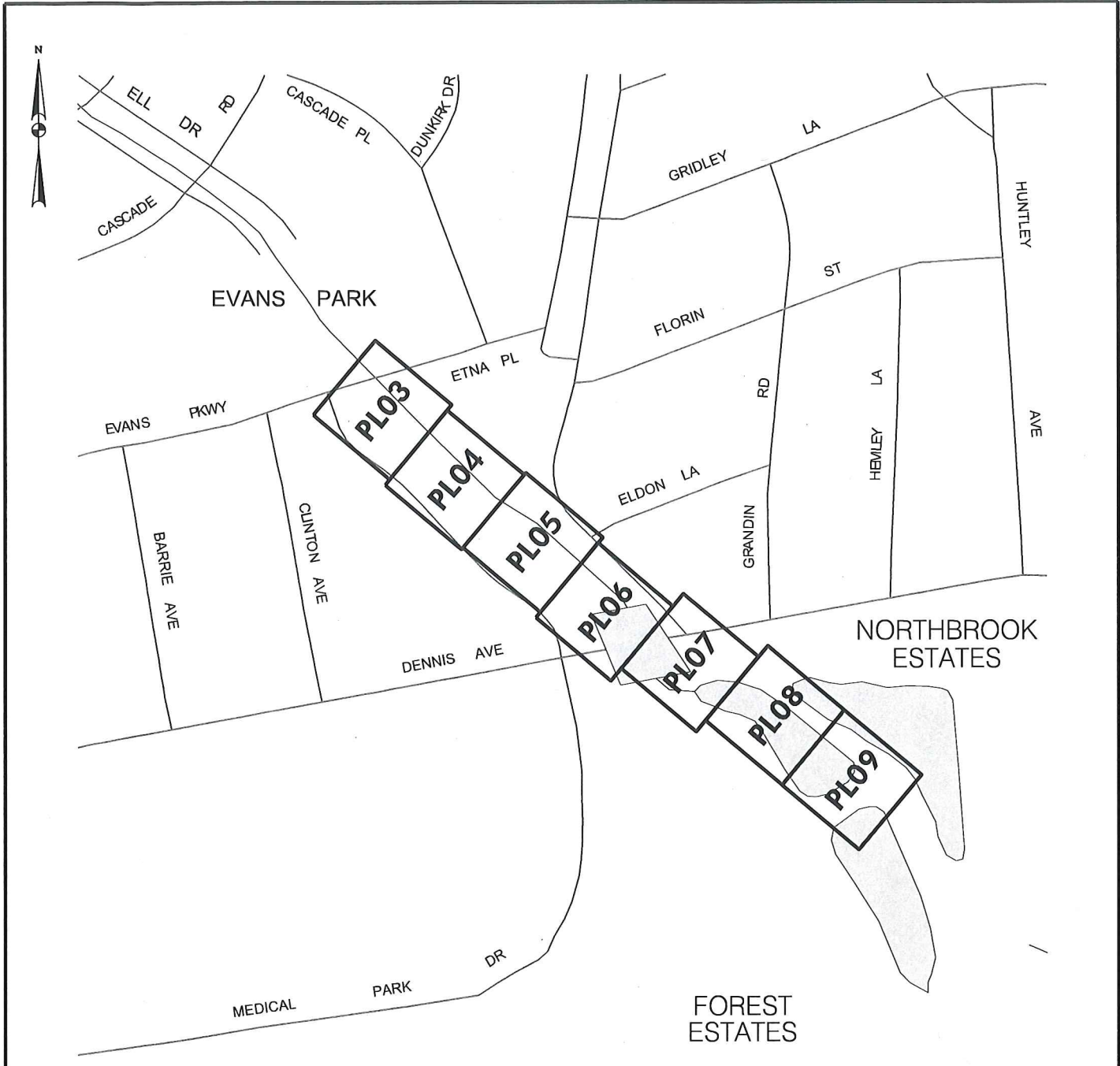


PLATE LAYOUT  
 SCALE: 1" = 300'

MONTGOMERY COUNTY, MARYLAND  
 DEPARTMENT OF  
 ENVIRONMENTAL PROTECTION

WHEATON BRANCH FLOOD MITIGATION  
 CONTRACT NO.: 1011771  
 MONTGOMERY COUNTY, MARYLAND

**GPI** [www.gpinet.com](http://www.gpinet.com)

Engineering | Design | Planning | Construction Management

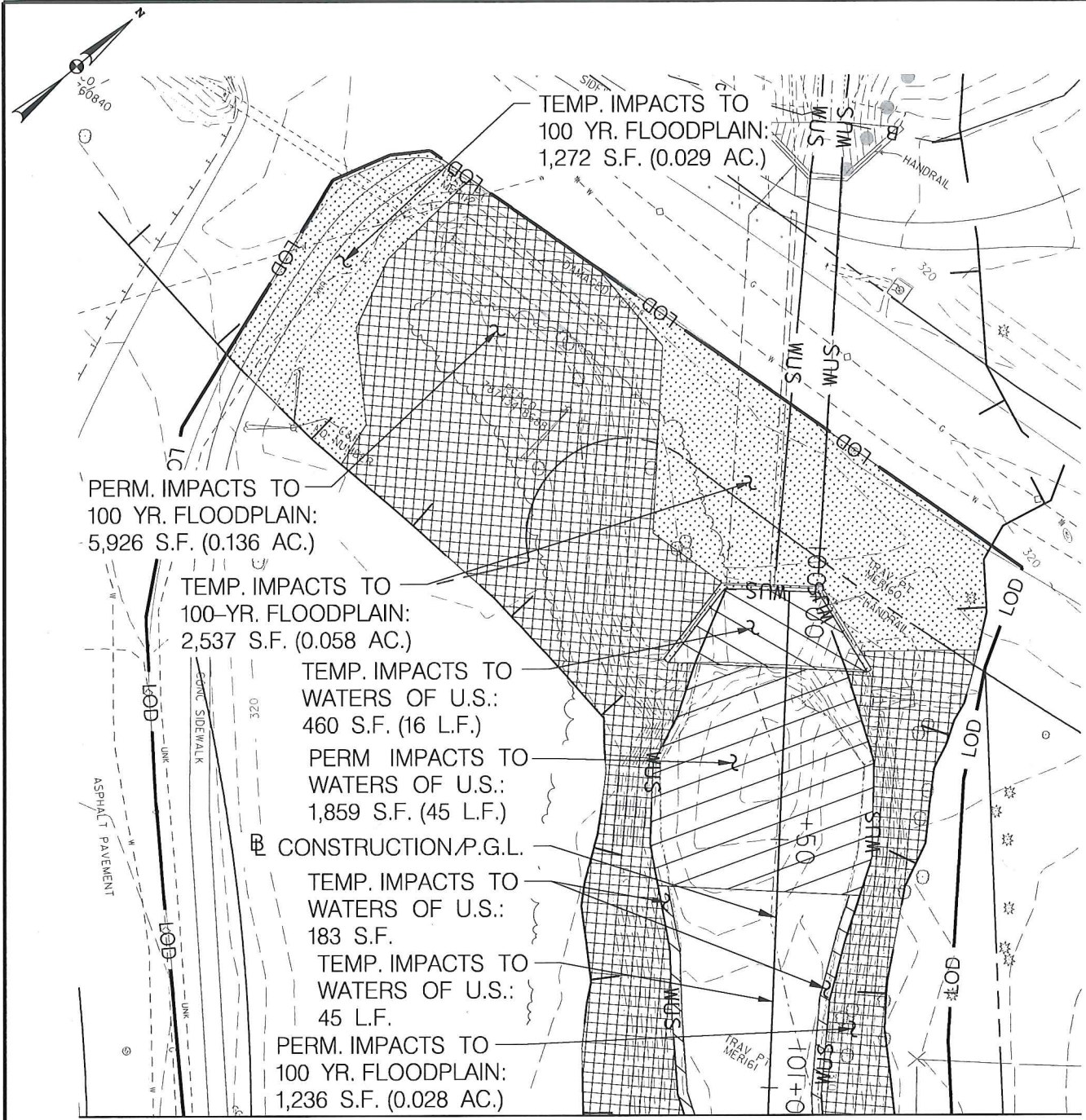
Greenman-Pedersen, Inc.  
 11000 Broken Land Parkway, Suite 500  
 Columbia, MD 21044  
 Tel: 410.880.3055

SCALE: 1" = 1,000'

**WETLAND & WATERWAY IMPACT PLATES**

**PLATE 2 OF 11**

DATE: 04/2020  
 RVS'D:



MATCH LINE – SEE IMPACT PLATE 4

NOTE:  
FOR LEGEND, SEE PLATE 9 OF 10.

MONTGOMERY COUNTY, MARYLAND  
DEPARTMENT OF ENVIRONMENTAL PROTECTION

WHEATON BRANCH FLOOD MITIGATION  
CONTRACT NO.: 1011771  
MONTGOMERY COUNTY, MARYLAND

**GPI** www.gpinet.com

Engineering | Design | Planning | Construction Management

Greenman-Pedersen, Inc.  
11000 Broken Land Parkway, Suite 500  
Columbia, MD 21044  
Tel: 410.880.3055

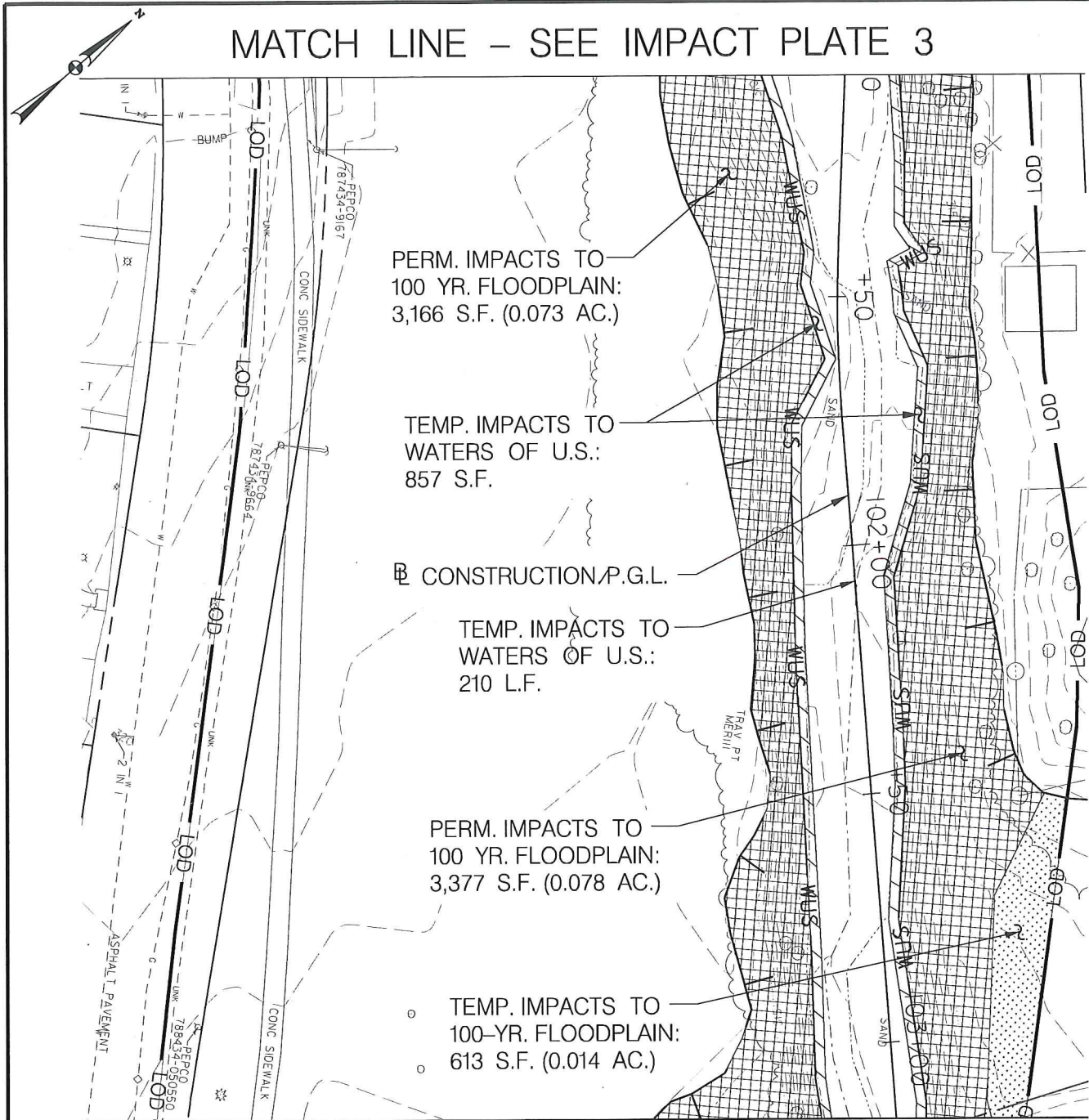
**WETLAND & WATERWAY IMPACT PLATES**

**PLATE 3 OF 11**

DATE: 04/2020  
RVS'D:

SCALE: 1" = 30'

MATCH LINE – SEE IMPACT PLATE 3



PERM. IMPACTS TO  
100 YR. FLOODPLAIN:  
3,166 S.F. (0.073 AC.)

TEMP. IMPACTS TO  
WATERS OF U.S.:  
857 S.F.

CONSTRUCTION P.G.L.

TEMP. IMPACTS TO  
WATERS OF U.S.:  
210 L.F.

PERM. IMPACTS TO  
100 YR. FLOODPLAIN:  
3,377 S.F. (0.078 AC.)

TEMP. IMPACTS TO  
100-YR. FLOODPLAIN:  
613 S.F. (0.014 AC.)

MATCH LINE – SEE IMPACT PLATE 5

NOTE:  
FOR LEGEND, SEE PLATE 9 OF 10.

MONTGOMERY COUNTY, MARYLAND  
DEPARTMENT OF  
ENVIRONMENTAL PROTECTION

WHEATON BRANCH FLOOD MITIGATION  
CONTRACT NO.: 1011771  
MONTGOMERY COUNTY, MARYLAND

**GPI**

www.gpinet.com

Engineering | Design | Planning | Construction Management

Greenman-Pedersen, Inc.  
11000 Broken Land Parkway, Suite 500  
Columbia, MD 21044  
Tel: 410.880.3055

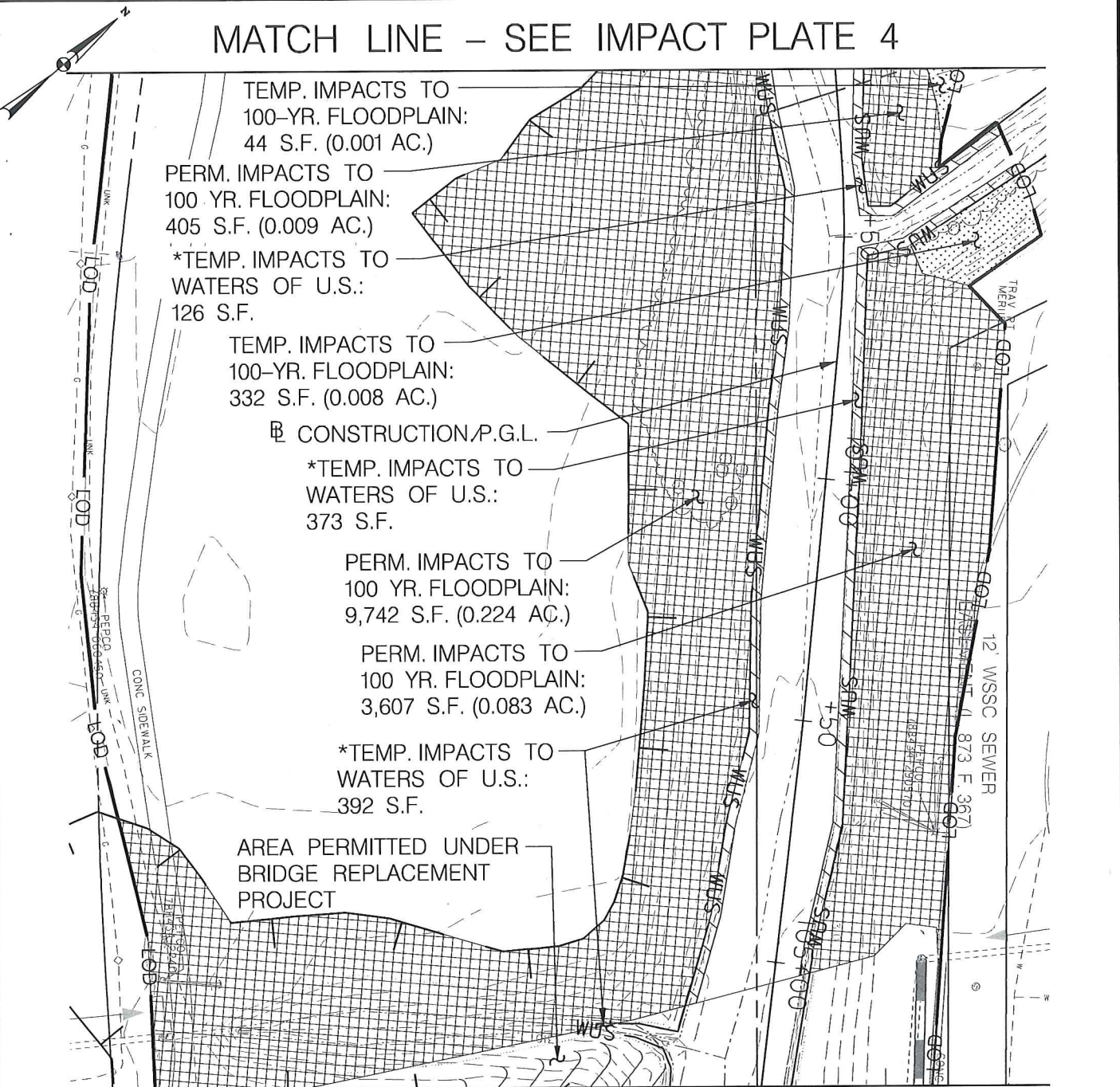
**WETLAND & WATERWAY IMPACT PLATES**

**PLATE 4 OF 11**

DATE: 04/2020  
RVS'D:

SCALE: 1" = 30'

# MATCH LINE – SEE IMPACT PLATE 4



# MATCH LINE – SEE IMPACT PLATE 6

\*TEMP. IMPACTS TO WATERS OF U.S.: 232 L.F.

NOTE:  
FOR LEGEND, SEE PLATE 9 OF 10.



[www.gpinet.com](http://www.gpinet.com)

Engineering | Design | Planning | Construction Management

Greenman-Pedersen, Inc.  
11000 Broken Land Parkway, Suite 500  
Columbia, MD 21044  
Tel: 410.880.3055

MONTGOMERY COUNTY, MARYLAND  
DEPARTMENT OF  
ENVIRONMENTAL PROTECTION

WHEATON BRANCH FLOOD MITIGATION  
CONTRACT NO.: 1011771  
MONTGOMERY COUNTY, MARYLAND

## WETLAND & WATERWAY IMPACT PLATES

PLATE 5 OF 11

DATE: 04/2020  
RVS'D:

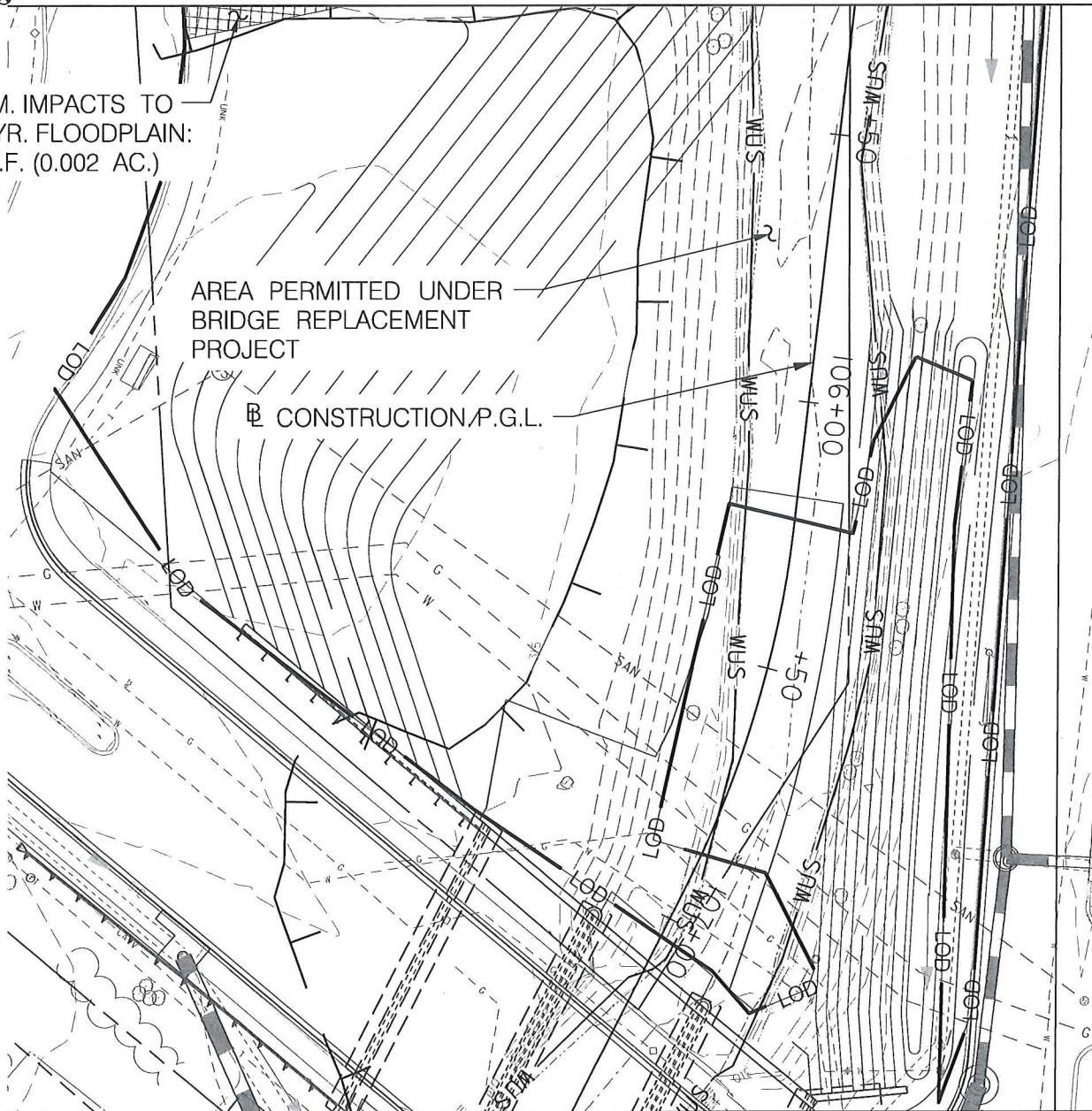
SCALE: 1" = 30'

MATCH LINE – SEE IMPACT PLATE 5

PERM. IMPACTS TO  
100 YR. FLOODPLAIN:  
96 S.F. (0.002 AC.)

AREA PERMITTED UNDER  
BRIDGE REPLACEMENT  
PROJECT

CONSTRUCTION P.G.L.



MATCH LINE – SEE IMPACT PLATE 7

NOTE:  
FOR LEGEND, SEE PLATE 9 OF 10.

MONTGOMERY COUNTY, MARYLAND  
DEPARTMENT OF  
ENVIRONMENTAL PROTECTION

WHEATON BRANCH FLOOD MITIGATION  
CONTRACT NO.: 1011771  
MONTGOMERY COUNTY, MARYLAND

**GPI**

www.gpinet.com

Engineering | Design | Planning | Construction Management

Greenman-Pedersen, Inc.  
11000 Broken Land Parkway, Suite 500  
Columbia, MD 21044  
Tel: 410.880.3055

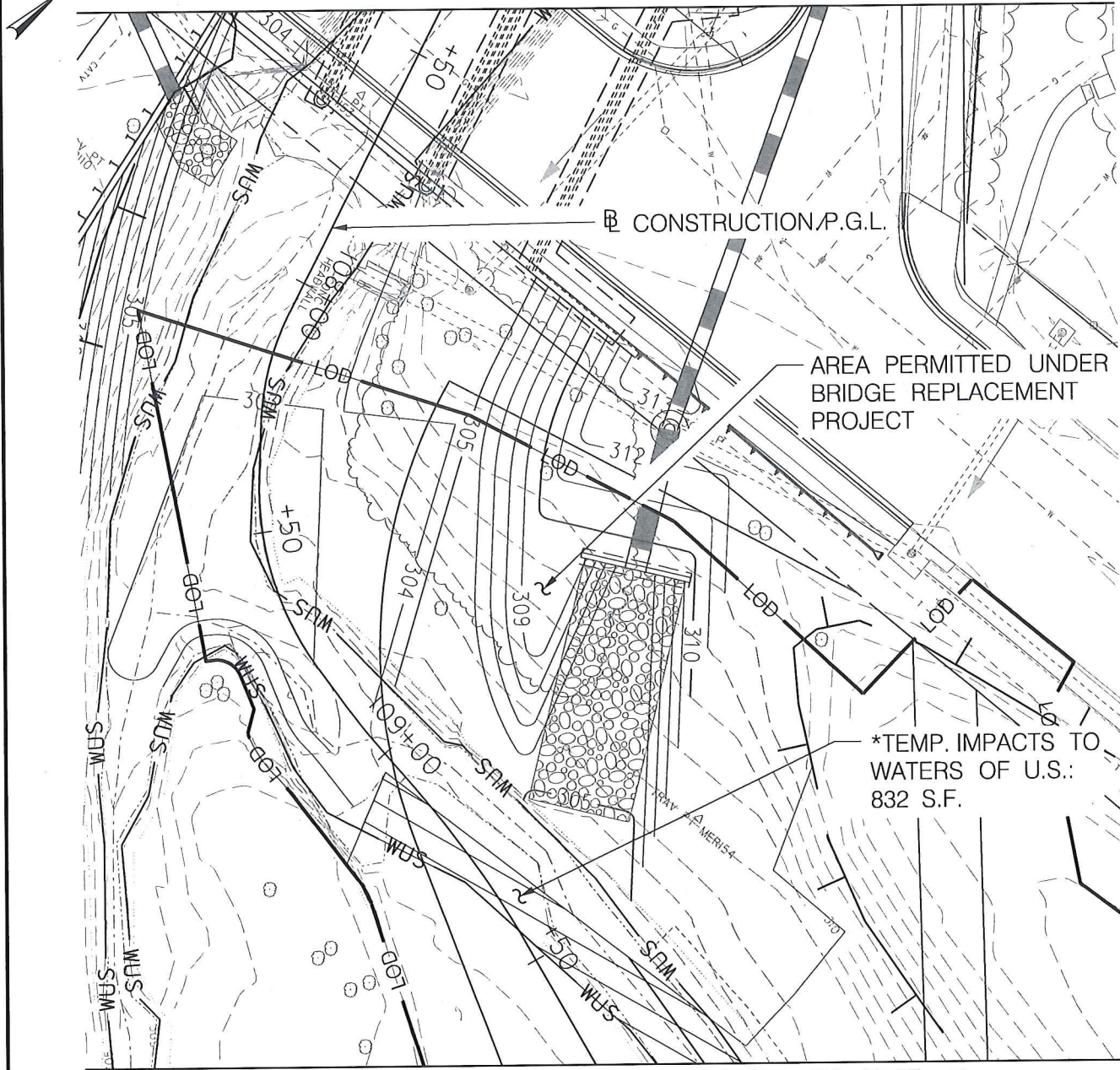
**WETLAND & WATERWAY IMPACT PLATES**

**PLATE 6 OF 11**

DATE: 04/2020  
RVS'D:

SCALE: 1" = 30'

MATCH LINE - SEE IMPACT PLATE 6



MATCH LINE - SEE IMPACT PLATE 8

\*TEMP. IMPACTS TO WATERS OF U.S.: 25 L.F.

NOTE:  
FOR LEGEND, SEE PLATE 9 OF 10.

MONTGOMERY COUNTY, MARYLAND  
DEPARTMENT OF  
ENVIRONMENTAL PROTECTION

WHEATON BRANCH FLOOD MITIGATION  
CONTRACT NO.: 1011771  
MONTGOMERY COUNTY, MARYLAND

**GPI**

www.gpinet.com

Engineering | Design | Planning | Construction Management

Greenman-Pedersen, Inc.  
11000 Broken Land Parkway, Suite 500  
Columbia, MD 21044  
Tel: 410.880.3055

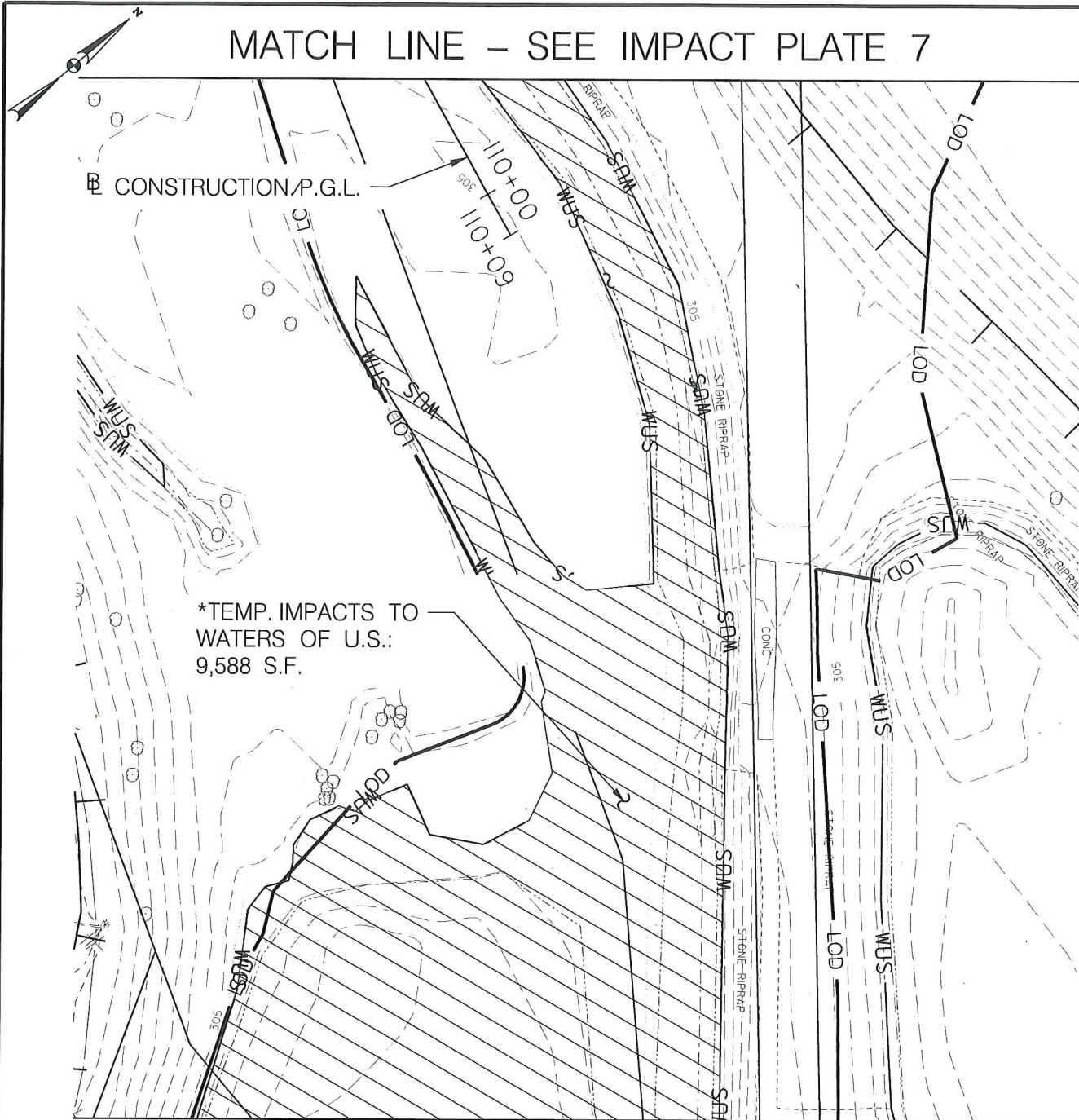
**WETLAND & WATERWAY IMPACT PLATES**

**PLATE 7 OF 11**

DATE: 04/2020  
RVS'D:

SCALE: 1"= 30'

MATCH LINE – SEE IMPACT PLATE 7



MATCH LINE – SEE IMPACT PLATE 9

\*TEMP. IMPACTS TO WATERS OF U.S.: 218 L.F.

NOTE:  
FOR LEGEND, SEE PLATE 9 OF 10.

MONTGOMERY COUNTY, MARYLAND  
DEPARTMENT OF  
ENVIRONMENTAL PROTECTION

WHEATON BRANCH FLOOD MITIGATION  
CONTRACT NO.: 1011771  
MONTGOMERY COUNTY, MARYLAND

**GPI**

www.gpinet.com

Engineering | Design | Planning | Construction Management

Greenman-Pedersen, Inc.  
11000 Broken Land Parkway, Suite 500  
Columbia, MD 21044  
Tel: 410.880.3055

**WETLAND & WATERWAY IMPACT PLATES**

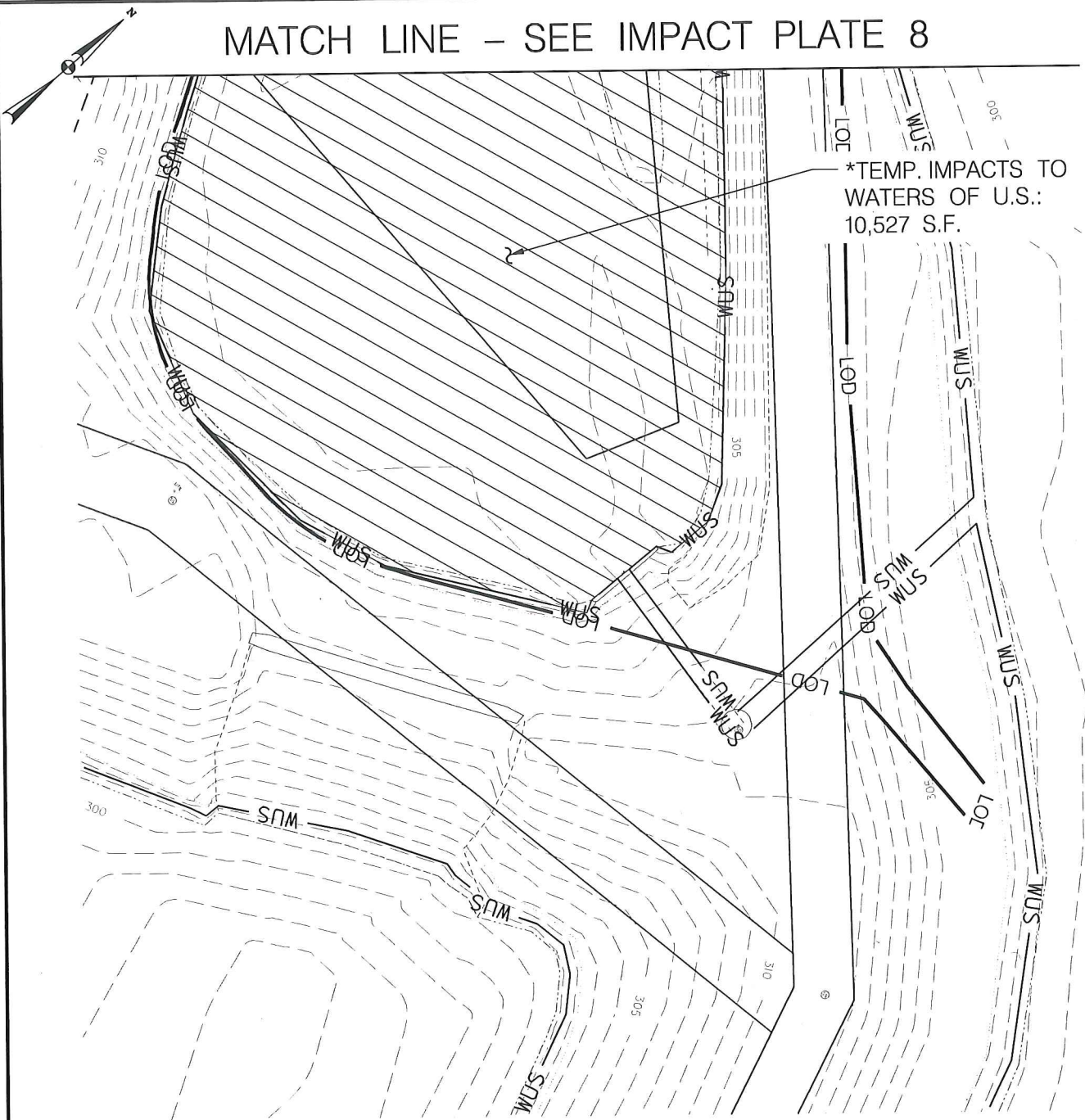
**PLATE 8 OF 11**

DATE: 04/2020  
RVS'D:

SCALE: 1"= 30'



MATCH LINE - SEE IMPACT PLATE 8



\*TEMP. IMPACTS TO WATERS OF U.S.: 124 L.F.

NOTE:  
FOR LEGEND, SEE PLATE 9 OF 10.

MONTGOMERY COUNTY, MARYLAND  
DEPARTMENT OF  
ENVIRONMENTAL PROTECTION

WHEATON BRANCH FLOOD MITIGATION  
CONTRACT NO.: 1011771  
MONTGOMERY COUNTY, MARYLAND

**GPI**

www.gpinet.com

Engineering | Design | Planning | Construction Management

Greenman-Pedersen, Inc.  
11000 Broken Land Parkway, Suite 500  
Columbia, MD 21044  
Tel: 410.880.3055

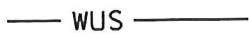
**WETLAND & WATERWAY IMPACT PLATES**

**PLATE 9 OF 11**

DATE: 04/2020  
RVS'D:

SCALE: 1" = 30'

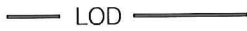
## LEGEND



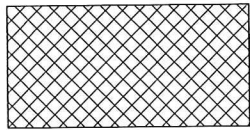
LIMITS OF WATERS OF U.S



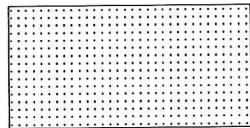
LIMITS OF 100 YR. FLOODPLAIN



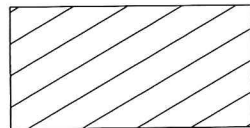
LIMITS OF DISTURBANCE



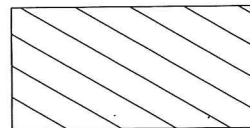
PERMANENT IMPACTS TO 100-YR. FLOODPLAIN = 23,948 S.F. (0.55 AC.)



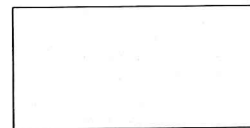
TEMPORARY IMPACTS TO 100-YR FLOODPLAIN = 4,798 S.F. (0.11 AC.)



PERMANENT IMPACTS TO WATERS OF US = 1,859 S.F. (45 L.F.)



TEMPORARY IMPACTS TO WATERS OF US = 23,338 S.F. (870 L.F.)



AREA PERMITTED UNDER BRIDGE REPLACEMENT PROJECT

MONTGOMERY COUNTY, MARYLAND  
DEPARTMENT OF  
ENVIRONMENTAL PROTECTION

WHEATON BRANCH FLOOD MITIGATION  
CONTRACT NO.: 1011771  
MONTGOMERY COUNTY, MARYLAND

# GPI

[www.gpinet.com](http://www.gpinet.com)

Engineering | Design | Planning | Construction Management

Greenman-Pedersen, Inc.  
11000 Broken Land Parkway, Suite 500  
Columbia, MD 21044  
Tel: 410.880.3055

## WETLAND & WATERWAY IMPACT PLATES

**PLATE 10 OF 11**

DATE: 04/2020  
RVS'D:

NOT TO SCALE

## WETLAND IMPACT SUMMARY

	PERMANENT WETLAND (SF/AC)	TEMPORARY WETLAND (SF/AC)	PERMANENT 25' WETLAND BUFFER (SF/AC)	TEMPORARY 25' WETLAND BUFFER (SF/AC)
<b>TOTAL</b>	0/0	0/0	0/0	0/0

## WATERWAY IMPACT SUMMARY

	PERMANENT WUS (SF/LF)	TEMPORARY WUS (SF/LF)	PERMANENT 100-YR FLOODPLAIN (SF/AC)	TEMPORARY 100-YR FLOODPLAIN (SF/AC)
<b>TOTAL</b>	1,859/45	23,338/870	23,948/0.55	4,798/0.11

MONTGOMERY COUNTY, MARYLAND  
DEPARTMENT OF  
ENVIRONMENTAL PROTECTION

WHEATON BRANCH FLOOD MITIGATION  
CONTRACT NO.: 1011771  
MONTGOMERY COUNTY, MARYLAND

# GPI

www.gpinet.com

Engineering | Design | Planning | Construction Management

Greenman-Pedersen, Inc.  
11000 Broken Land Parkway, Suite 500  
Columbia, MD 21044  
Tel: 410.880.3055

### WETLAND & WATERWAY IMPACT PLATES

**PLATE 11 OF 11**

DATE: 04/2020  
RVS'D:

NOT TO SCALE