

SEE PLATE 7

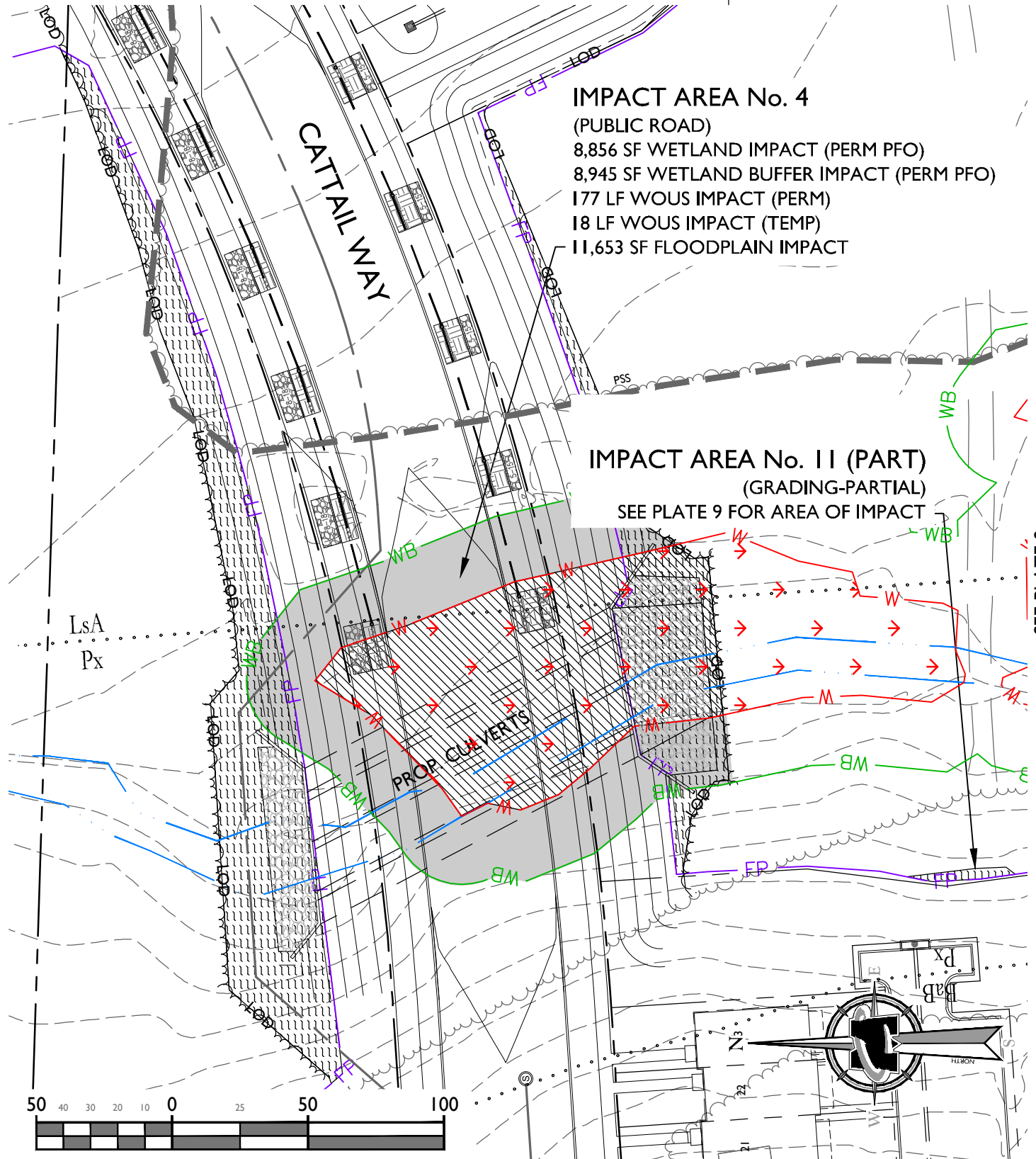
SEE PLATE 10

### IMPACT AREA No. 4

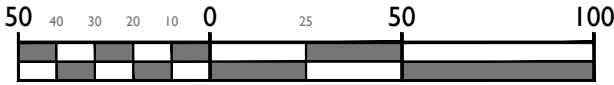
(PUBLIC ROAD)  
 8,856 SF WETLAND IMPACT (PERM PFO)  
 8,945 SF WETLAND BUFFER IMPACT (PERM PFO)  
 177 LF WOUS IMPACT (PERM)  
 18 LF WOUS IMPACT (TEMP)  
 11,653 SF FLOODPLAIN IMPACT

### IMPACT AREA No. 11 (PART)

(GRADING-PARTIAL)  
 SEE PLATE 9 FOR AREA OF IMPACT



SEE PLATE 9



SCALE : 1" = 50'



Customer Loyalty through Client Satisfaction  
 www.maserconsulting.com  
 Engineers ■ Planners ■ Surveyors  
 Landscape Architects ■ Environmental Scientists

- Office Locations:
- Red Bank, NJ
  - Clinton, NJ
  - Hamilton, NJ
  - Egg Harbor, NJ
  - Montvale, NJ
  - Mt. Arlington, NJ
  - Mt. Laurel, NJ
  - Albany, NY
  - Newburgh, NY
  - Hawthorne, NY
  - Columbia, MD
  - Lehigh Valley, PA
  - Exton, PA
  - Philadelphia, PA
  - Pittsburgh, PA
  - Tampa, FL
  - Orlando, FL
  - Miami, FL
  - Sterling, VA
  - Norfolk, VA
  - Albuquerque, NM
  - Charlotte, NC

Copyright © 2021 Maser Consulting P.A. All Rights Reserved. This drawing and all the information contained herein is authorized for use only by the party for whom the services were contracted or to whom it is certified. This drawing may not be copied, reused, disclosed, distributed or relied upon for any other purpose without the express written consent of Maser Consulting P.A.

#### WETLAND IMPACT PLATES

FOR  
 STEPHEN'S CROSSING AT  
 BRANDYWINE  
 15-NT-0395/201561897  
 BRANDYWINE BUSINESS PARK,  
 LOTS 2-21, 23-27, PARCELS A-C,  
 & OUTPARCEL A

PRINCE GEORGE'S COUNTY  
 MARYLAND



Know what's below.  
 Call before you dig.  
 FOR STATE SPECIFIC DIRECT PHONE NUMBERS  
 VISIT: WWW.CALL811.COM



STERLING OFFICE  
 22375 Br oderrick Drive  
 Suite 110  
 Sterling, VA 20166  
 Phone: 703.430.4330  
 Fax: 703.430.4339

**PROTECT YOURSELF**  
 ALL STATES REQUIRE NOTIFICATION  
 OF EXCAVATORS, DESIGNERS, OR  
 ANY PERSON PREPARING TO  
 DISTURB THE EARTH'S SURFACE  
 ANYWHERE IN ANY STATE

#### IMPACT AREA No. 4

SCALE	DATE	DRAWN BY:	CHECKED BY:
AS SHOWN	03/19/2021	CME	JWC
PROJECT NUMBER	DRAWING NAME:		
20000031A	C-WETLAND IMPACT PLATES		

SHEET TITLE:	
PLATE NO. 6	
SHEET NUMBER:	
6 of 15	

**IMPACT AREA No. 5**

(PUBLIC ROADS)

55,333 SF WETLAND (PERM PFO)

3,050 SF WETLAND (PERM PSS)

11,296 SF WETLAND BUFFER (PERM PFO)

753 SF WETLAND BUFFER (PERM PSS)

644 SF WETLAND BUFFER (PERM EMER.)

**IMPACT AREA No. 6**

(GRADING)

1,215 SF WETLAND IMPACT (PERM EMERGENT)

4,762 SF WETLAND BUFFER IMPACT (PERM EMERGENT)

**CORPS ISOLATED**

(EMERGENT)

**IMPACT AREA No. 7**

(PRIVATE ROADS AND GRADING)

2,270 SF PFO WETLAND IMPACT AND 7,734 SF PSS WETLAND IMPACT (PRIV. ROADS)

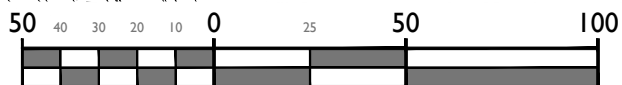
478 SF PSS WETLAND IMPACT (GRADING)

3,112 SF PFO WETLAND BUFFER IMPACT AND 5,968 SF PSS WETLAND BUFFER IMPACT (PRIV. ROADS)

9,471 SF WETLAND BUFFER IMPACT (GRADING)

SEE PLATE 6

SEE PLATE 8



SCALE : 1" = 50'

SEE PLATE 10



Customer Loyalty through Client Satisfaction  
www.maserconsulting.com  
Engineers ■ Planners ■ Surveyors  
Landscape Architects ■ Environmental Scientists

- Office Locations:
- Red Bank, NJ
  - Clinton, NJ
  - Hamilton, NJ
  - Egg Harbor, NJ
  - Montvale, NJ
  - Mt. Laurel, NJ
  - Albany, NY
  - Newburgh, NY
  - Hawthorne, NY
  - Columbia, MD
  - Lehigh Valley, PA
  - Exton, PA
  - Philadelphia, PA
  - Pittsburgh, PA
  - Tampa, FL
  - Orlando, FL
  - Miami, FL
  - Sterling, VA
  - Norfolk, VA
  - Albuquerque, NM
  - Charlotte, NC

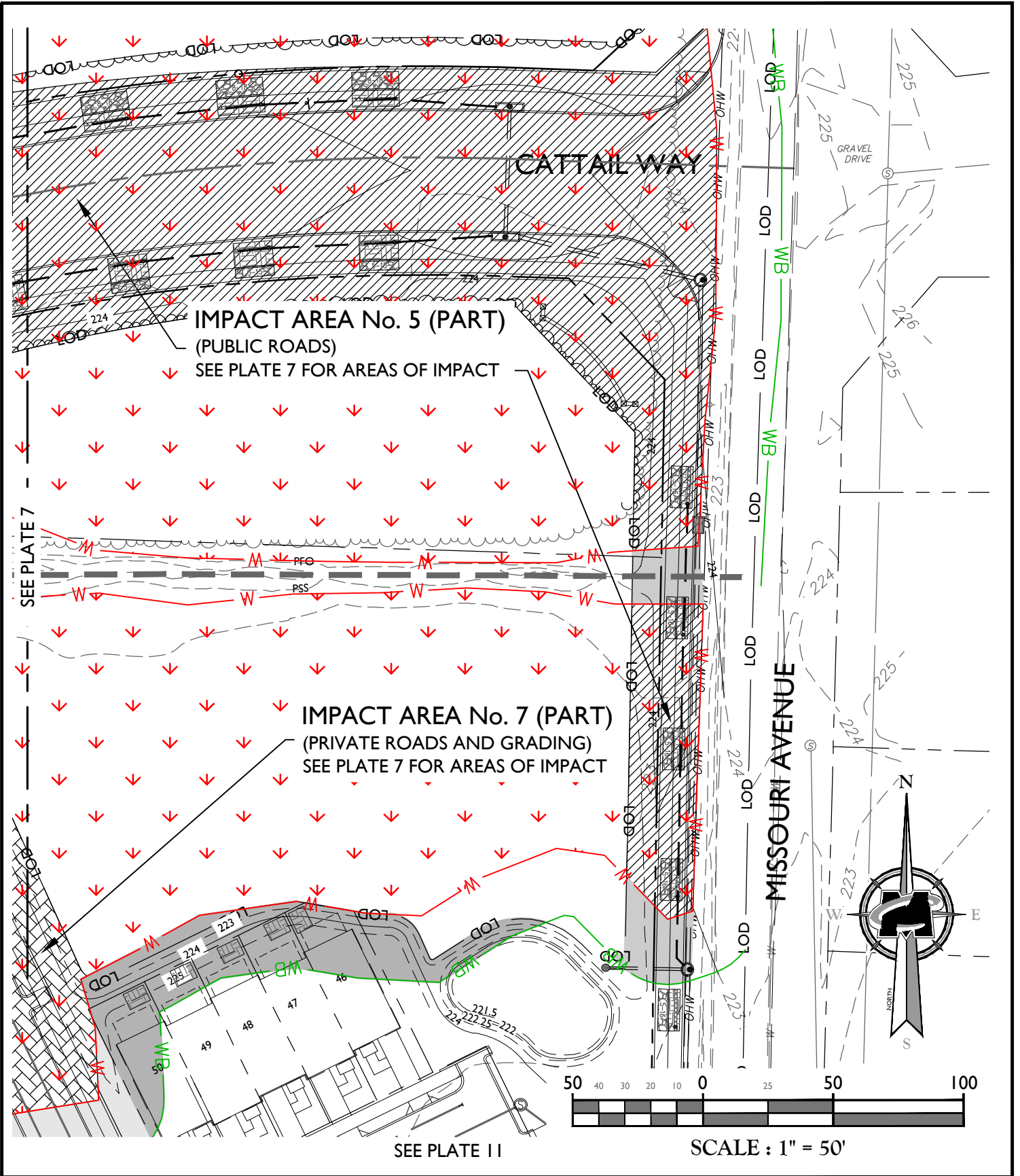
Copyright © 2021, Maser Consulting P.A. All Rights Reserved. This drawing and all the information contained herein is authorized for use only by the party for whom the services were contracted or to whom it is certified. This drawing may not be copied, reused, disclosed, distributed or relied upon for any other purpose without the express written consent of Maser Consulting P.A.

WETLAND IMPACT PLATES  
FOR  
STEPHEN'S CROSSING AT  
BRANDYWINE  
BRANDYWINE BUSINESS PARK  
LOTS 2-21, 23-27, PARCELS A-C,  
& OUTPARCEL A  
BRANDYWINE  
PRINCE GEORGE'S COUNTY  
MARYLAND

**811**  
Know what's below.  
Call before you dig.  
FOR STATE SPECIFIC DIRECT PHONE NUMBERS  
VISIT: WWW.CALL811.COM

**STERLING OFFICE**  
22375 Broadrick Drive  
Suite 110  
Sterling, VA 20166  
Phone: 703.430.4330  
Fax: 703.430.4339

IMPACT AREA No. 5, 6 AND 7			
SCALE:	DATE:	DRAWN BY:	CHECKED BY:
AS SHOWN	03/17/2021	CME	JWC
PROJECT NUMBER:	DRAWING NAME:		
20000031A	C-WETLAND IMPACT PLATES		
SHEET TITLE:			
PLATE NO. 7			
SHEET NUMBER:			
7 of 15			



**MASER**  
CONSULTING P.A.

Customer Loyalty through Client Satisfaction  
www.maserconsulting.com

Engineers ■ Planners ■ Surveyors  
Landscape Architects ■ Environmental Scientists

Office Locations:

- Red Bank, NJ
- Clinton, NJ
- Hamilton, NJ
- Egg Harbor, NJ
- Montvale, NJ
- Mt. Arlington, NJ
- Mt. Laurel, NJ
- Albany, NY
- Newburgh, NY
- Hawthorne, NY
- Columbia, MD
- Lehigh Valley, PA
- Exton, PA
- Philadelphia, PA
- Pittsburgh, PA
- Tampa, FL
- Orlando, FL
- Miami, FL
- Sterling, VA
- Norfolk, VA
- Albuquerque, NM
- Charlotte, NC

Copyright © 2021, Maser Consulting P.A. All Rights Reserved. This drawing and all the information contained herein is authorized for use only by the party for whom the services were contracted or to whom it is certified. This drawing may not be copied, reused, disclosed, distributed or relied upon for any other purpose without the express written consent of Maser Consulting P.A.

WETLAND IMPACT PLATES  
FOR  
STEPHEN'S CROSSING AT  
BRANDYWINE  
BRANDYWINE BUSINESS PARK  
LOTS 2-21, 23-27, PARCELS A-C,  
& OUTPARCEL A  
BRANDYWINE  
PRINCE GEORGE'S COUNTY  
MARYLAND

PROTECT YOURSELF  
ALL STATES REQUIRE NOTIFICATION  
OF EXCAVATORS, DESIGNERS, OR  
ANY PERSON PREPARING TO  
DISTURB THE EARTH'S SURFACE  
ANYWHERE IN ANY STATE

Know what's below.  
Call before you dig.  
FOR STATE SPECIFIC DIRECT PHONE NUMBERS  
VISIT: WWW.CALL811.COM

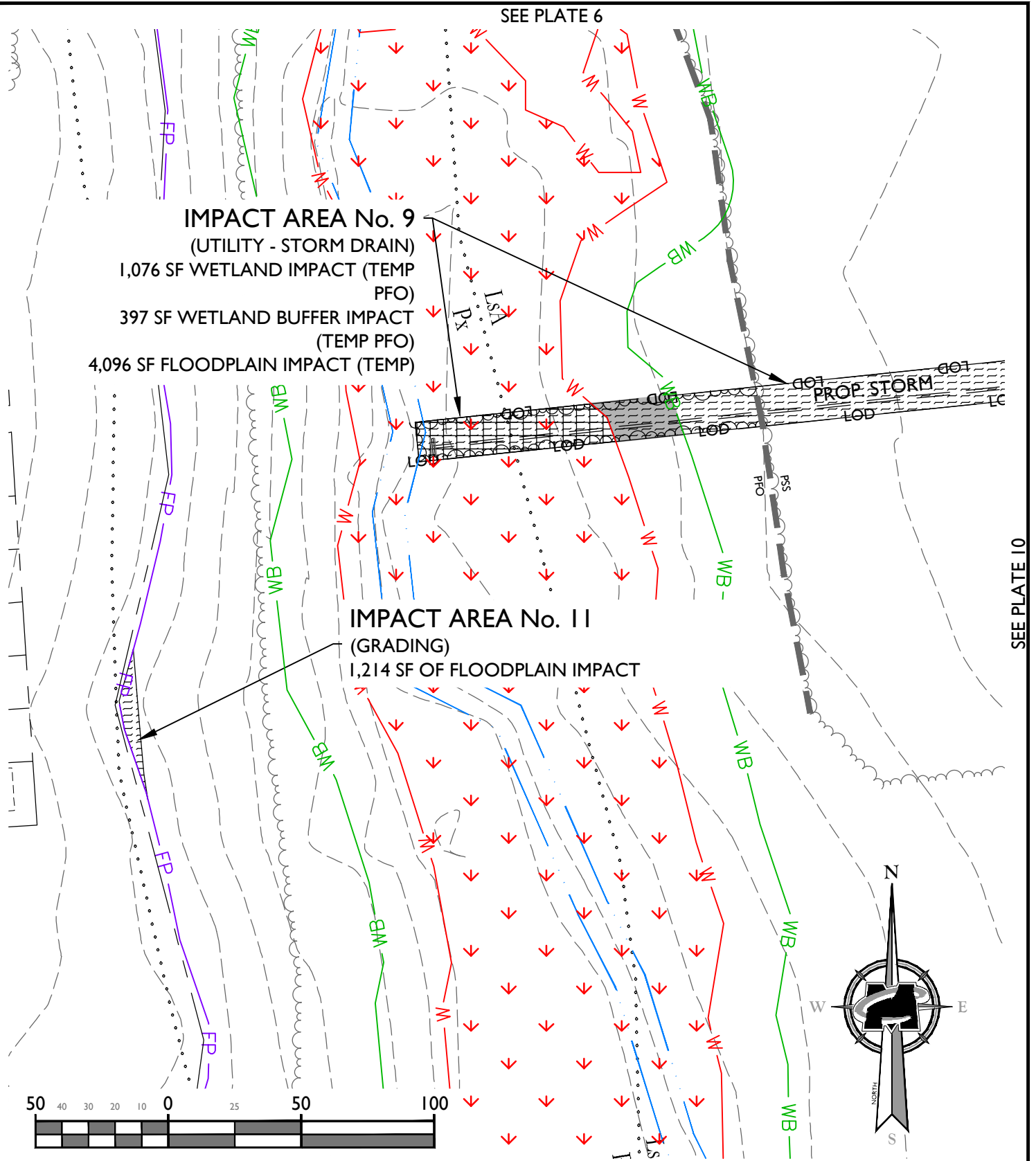
STERLING OFFICE  
2375 Brudenrick Drive  
Suite 110  
Sterling, VA 20166  
Phone: 703.430.4330  
Fax: 703.430.4339

IMPACT AREA No. 5 AND 7			
SCALE:	DATE:	DRAWN BY:	CHECKED BY:
AS SHOWN	03/17/2021	CME	JWC
PROJECT NUMBER:	DRAWING NAME:		
20000031A	C-WETLAND IMPACT PLATES		
SHEET TITLE:			
PLATE NO. 8			
SHEET NUMBER:			
8 of 15			

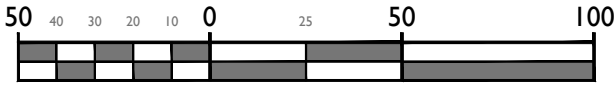
SEE PLATE 6

**IMPACT AREA No. 9**  
(UTILITY - STORM DRAIN)  
1,076 SF WETLAND IMPACT (TEMP PFO)  
397 SF WETLAND BUFFER IMPACT (TEMP PFO)  
4,096 SF FLOODPLAIN IMPACT (TEMP)

**IMPACT AREA No. 11**  
(GRADING)  
1,214 SF OF FLOODPLAIN IMPACT



SEE PLATE 10



SCALE : 1" = 50'



Customer Loyalty through Client Satisfaction  
www.maserconsulting.com  
Engineers ■ Planners ■ Surveyors  
Landscape Architects ■ Environmental Scientists

- Office Locations:
- Red Bank, NJ
  - Clinton, NJ
  - Hamilton, NJ
  - Egg Harbor, NJ
  - Montvale, NJ
  - Mt. Arlington, NJ
  - Mt. Laurel, NJ
  - Albany, NY
  - Newburgh, NY
  - Hawthorne, NY
  - Columbia, MD
  - Lehigh Valley, PA
  - Exton, PA
  - Philadelphia, PA
  - Pittsburgh, PA
  - Tampa, FL
  - Orlando, FL
  - Miami, FL
  - Sterling, VA
  - Norfolk, VA
  - Albuquerque, NM
  - Charlotte, NC

Copyright © 2021, Maser Consulting P.A. All Rights Reserved. This drawing and all the information contained herein is authorized for use only by the party for whom the services were contracted or to whom it is certified. This drawing may not be copied, reused, disclosed, distributed or relied upon for any other purpose without the express written consent of Maser Consulting P.A.

WETLAND IMPACT PLATES  
FOR  
STEPHEN'S CROSSING AT  
BRANDYWINE  
BRANDYWINE BUSINESS PARK  
LOTS 2-21, 23-27, PARCELS A-C,  
& OUTPARCEL A  
BRANDYWINE  
PRINCE GEORGE'S COUNTY  
MARYLAND



**PROTECT YOURSELF**  
ALL STATES REQUIRE NOTIFICATION OF EXCAVATORS, DESIGNERS, OR ANY PERSON PREPARING TO DISTURB THE EARTH'S SURFACE ANYWHERE IN ANY STATE



**STERLING OFFICE**  
22375 Broderick Drive  
Suite 110  
Sterling, VA 20166  
Phone: 703.430.4330  
Fax: 703.430.4339

IMPACT AREA No. 9 AND 11			
SCALE:	DATE:	DRAWN BY:	CHECKED BY:
AS SHOWN	03/17/2021	CME	JWC
PROJECT NUMBER:		DRAWING NAME:	
20000031A		C-WETLAND IMPACT PLATES	
SHEET TITLE:			
PLATE NO. 9			
SHEET NUMBER:			
9 of 15			

SEE PLATE 7

SEE PLATE 6

**IMPACT AREA No. 7 (PART)**  
(PRIVATE ROADS AND GRADING)  
SEE PLATE 7 FOR AREA OF IMPACT

**IMPACT AREA No. 11 (PART)**  
(GRADING)  
SEE PLATE 9 FOR AREA OF IMPACT

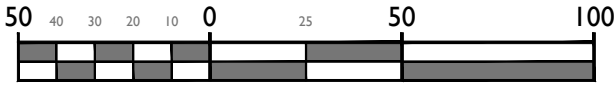
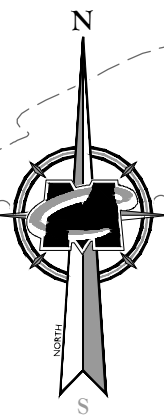
**IMPACT AREA No. 9 (PART)**  
(UTILITY - STORM DRAIN)  
SEE PLATE 9 FOR AREA OF IMPACT

PROP. STORMWATER POND

PROP. STORM

SEE PLATE 11

SEE PLATE 9



SCALE : 1" = 50'



Customer Loyalty through Client Satisfaction  
www.maserconsulting.com  
Engineers ■ Planners ■ Surveyors  
Landscape Architects ■ Environmental Scientists

Office Locations:

- Red Bank, NJ
- Clinton, NJ
- Hamilton, NJ
- Egg Harbor, NJ
- Montvale, NJ
- Mt. Arlington, NJ
- Mt. Laurel, NJ
- Albany, NY
- Newburgh, NY
- Hawthorne, NY
- Columbia, MD
- Lehigh Valley, PA
- Exton, PA
- Philadelphia, PA
- Pittsburgh, PA
- Tampa, FL
- Orlando, FL
- Miami, FL
- Sterling, VA
- Norfolk, VA
- Albuquerque, NM
- Charlotte, NC

Copyright © 2021 Maser Consulting P.A. All Rights Reserved. This drawing and all the information contained herein is authorized for use only by the party for whom the services were contracted or to whom it is certified. This drawing may not be copied, reused, disclosed, distributed or relied upon for any other purpose without the express written consent of Maser Consulting P.A.

WETLAND IMPACT PLATES  
FOR  
STEPHEN'S CROSSING AT  
BRANDYWINE  
& OUTPARCEL A  
BRANDYWINE  
PRINCE GEORGE'S COUNTY  
MARYLAND



PROTECT YOURSELF  
ALL STATES REQUIRE NOTIFICATION  
OF EXCAVATORS, DESIGNERS, OR  
ANY PERSON PREPARING TO  
DISTURB THE EARTH'S SURFACE  
ANYWHERE IN ANY STATE



STERLING OFFICE  
22375 Braddock Drive  
Suite 110  
Sterling, VA 20166  
Phone: 703.430.4330  
Fax: 703.430.4339

IMPACT AREA No. 7, 9 AND 11

SCALE:	DATE:	DRAWN BY:	CHECKED BY:
AS SHOWN	03/17/2021	CME	JWC
PROJECT NUMBER:	DRAWING NAME:		
20000031A	C-WETLAND IMPACT PLATES		

SHEET TITLE:  
**PLATE NO. 10**

SHEET NUMBER:  
**10 of 15**