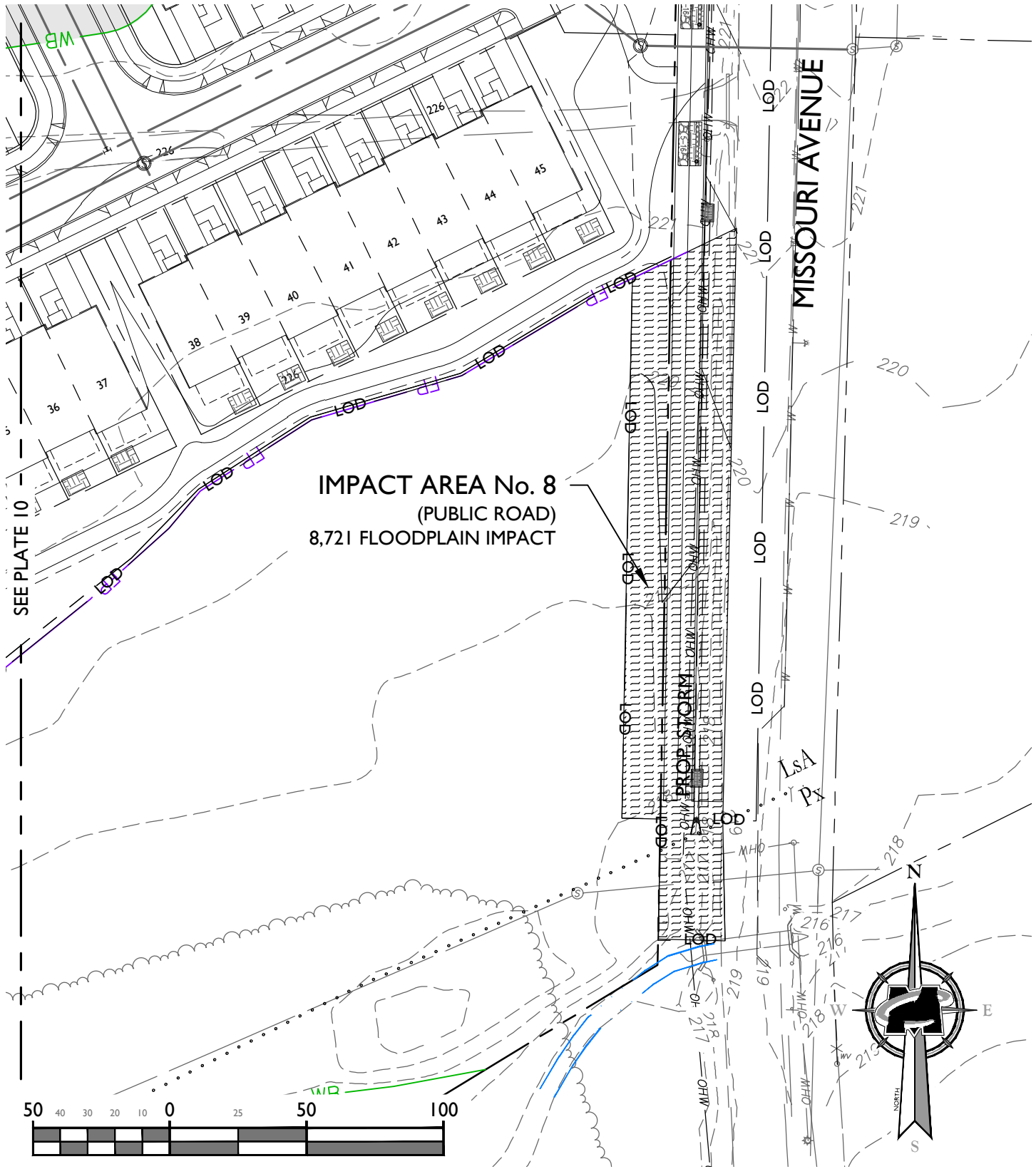
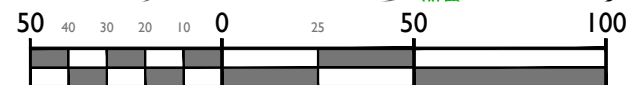


SEE PLATE 8



IMPACT AREA No. 8
(PUBLIC ROAD)
8,721 FLOODPLAIN IMPACT



SCALE : 1" = 50'

MASER
CONSULTING P.A.

Customer Loyalty through Client Satisfaction
www.maserconsulting.com

Engineers ■ Planners ■ Surveyors
Landscape Architects ■ Environmental Scientists

Office Locations:

- Red Bank, NJ
- Clinton, NJ
- Hamilton, NJ
- Egg Harbor, NJ
- Montvale, NJ
- Mt. Laurel, NJ
- Albany, NY
- Newburgh, NY
- Hawthorne, NY
- Columbia, MD
- Lehigh Valley, PA
- Exton, PA
- Philadelphia, PA
- Pittsburgh, PA
- Tampa, FL
- Orlando, FL
- Miami, FL
- Sterling, VA
- Norfolk, VA
- Albuquerque, NM
- Charlotte, NC

Copyright © 2021, Maser Consulting P.A. All Rights Reserved. This drawing and all the information contained herein is authorized for use only by the party for whom the services were contracted or to whom it is certified. This drawing may not be copied, reused, disclosed, distributed or relied upon for any other purpose without the express written consent of Maser Consulting P.A.

WETLAND IMPACT PLATES

FOR
STEPHEN'S CROSSING AT BRANDYWINE

15-NT-0395/201561897

BRANDYWINE BUSINESS PARK,
LOTS 2-21, 23-27, PARCELS A-C,
& OUTPARCEL A

PRINCE GEORGE'S COUNTY
MARYLAND

811
Know what's below.
Call before you dig.
FOR STATE SPECIFIC DIRECT PHONE NUMBERS
VISIT: WWW.CALL811.COM

STERLING OFFICE
23375 Braddock Drive
Suite 110
Sterling, VA 20166

Phone: 703.430.4330
Fax: 703.430.4339

IMPACT AREA No. 8 AND 11			
SCALE:	DATE:	DRAWN BY:	CHECKED BY:
AS SHOWN	03/19/2021	CME	JWC
PROJECT NUMBER:	DRAWING NAME:		
20000031A	C-WETLAND IMPACT PLATES		
SHEET TITLE:			
PLATE NO. 11			
SHEET NUMBER:			
11 of 15			

IMPACT AREA No. 10

(PUBLIC ROAD)

206 SF WETLAND IMPACT (PERM PFO)

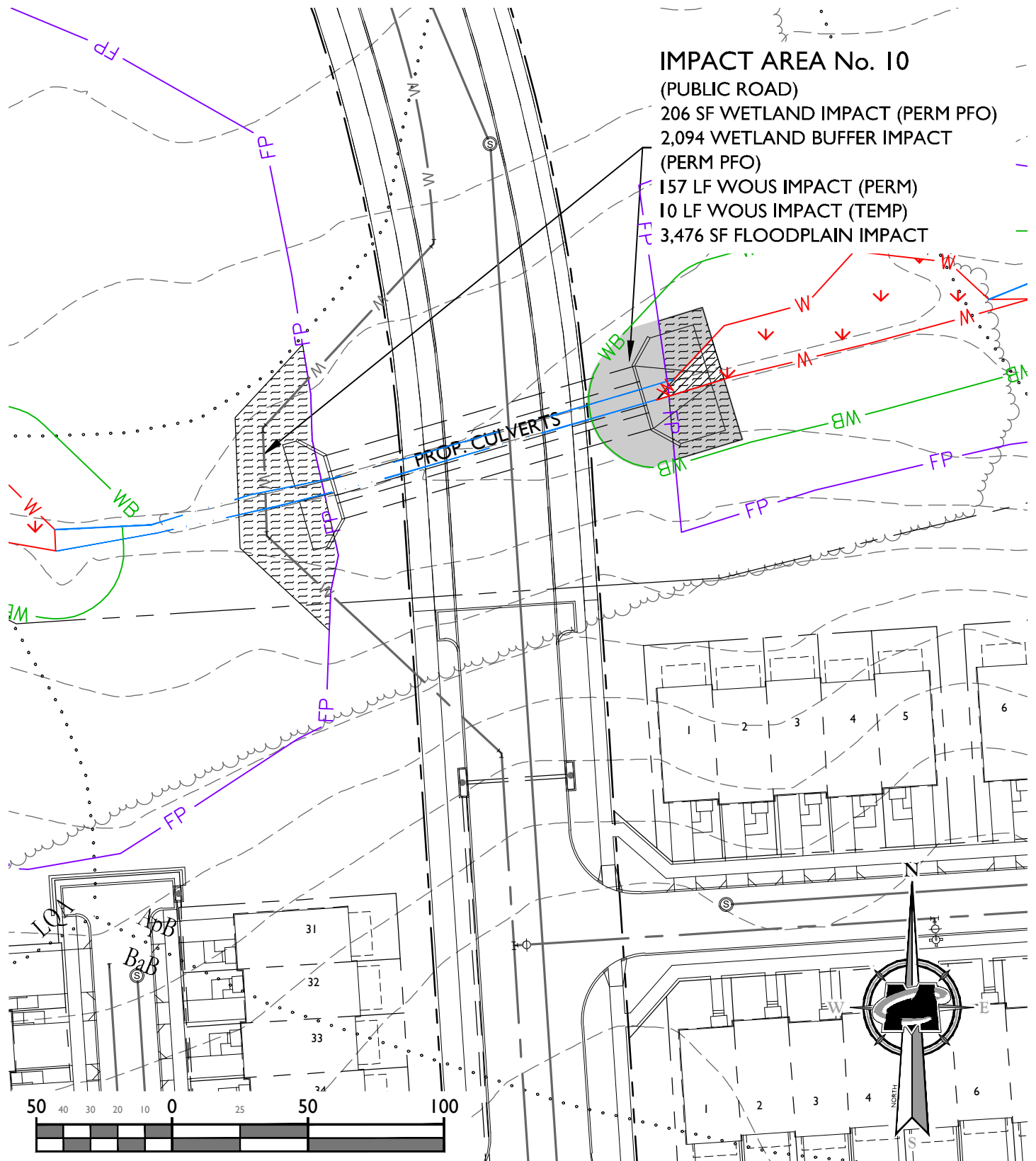
2,094 WETLAND BUFFER IMPACT

(PERM PFO)

157 LF WOUS IMPACT (PERM)

10 LF WOUS IMPACT (TEMP)

3,476 SF FLOODPLAIN IMPACT



SCALE : 1" = 50'



Customer Loyalty through Client Satisfaction
www.maserconsulting.com
Engineers ■ Planners ■ Surveyors
Landscape Architects ■ Environmental Scientists

Office Locations:

- Red Bank, NJ
- Clinton, NJ
- Hamilton, NJ
- Egg Harbor, NJ
- Montvale, NJ
- Mt. Arlington, NJ
- Mt. Laurel, NJ
- Albany, NY
- Newburgh, NY
- Hawthorne, NY
- Columbia, MD
- Lehigh Valley, PA
- Exton, PA
- Philadelphia, PA
- Pittsburgh, PA
- Tampa, FL
- Orlando, FL
- Miami, FL
- Sterling, VA
- Norfolk, VA
- Albuquerque, NM
- Charlotte, NC

Copyright © 2021, Maser Consulting P.A. All Rights Reserved. This drawing and all the information contained herein is authorized for use only by the party for whom the services were contracted or to whom it is certified. This drawing may not be copied, reused, disclosed, distributed or relied upon for any other purpose without the express written consent of Maser Consulting P.A.

WETLAND IMPACT PLATES

FOR
STEPHEN'S CROSSING AT
BRANDYWINE
15-NT-0395/201561897
BRANDYWINE BUSINESS PARK,
LOTS 2-21, 23-27, PARCELS A-C,
& OUTPARCEL A

PRINCE GEORGE'S COUNTY
MARYLAND



Know what's below.
Call before you dig.
FOR STATE SPECIFIC DIRECT PHONE NUMBERS
VISIT: WWW.CALL811.COM

PROTECT YOURSELF
ALL STATES REQUIRE NOTIFICATION
OF EXCAVATORS, DESIGNERS, OR
ANY PERSON PREPARING TO
DISTURB THE EARTH'S SURFACE
ANYWHERE IN ANY STATE



STERLING OFFICE
22375 Br orderick Drive
Suite 110
Sterling, VA 20166

Phone: 703.430.4330
Fax: 703.430.4339

IMPACT AREA No. 10

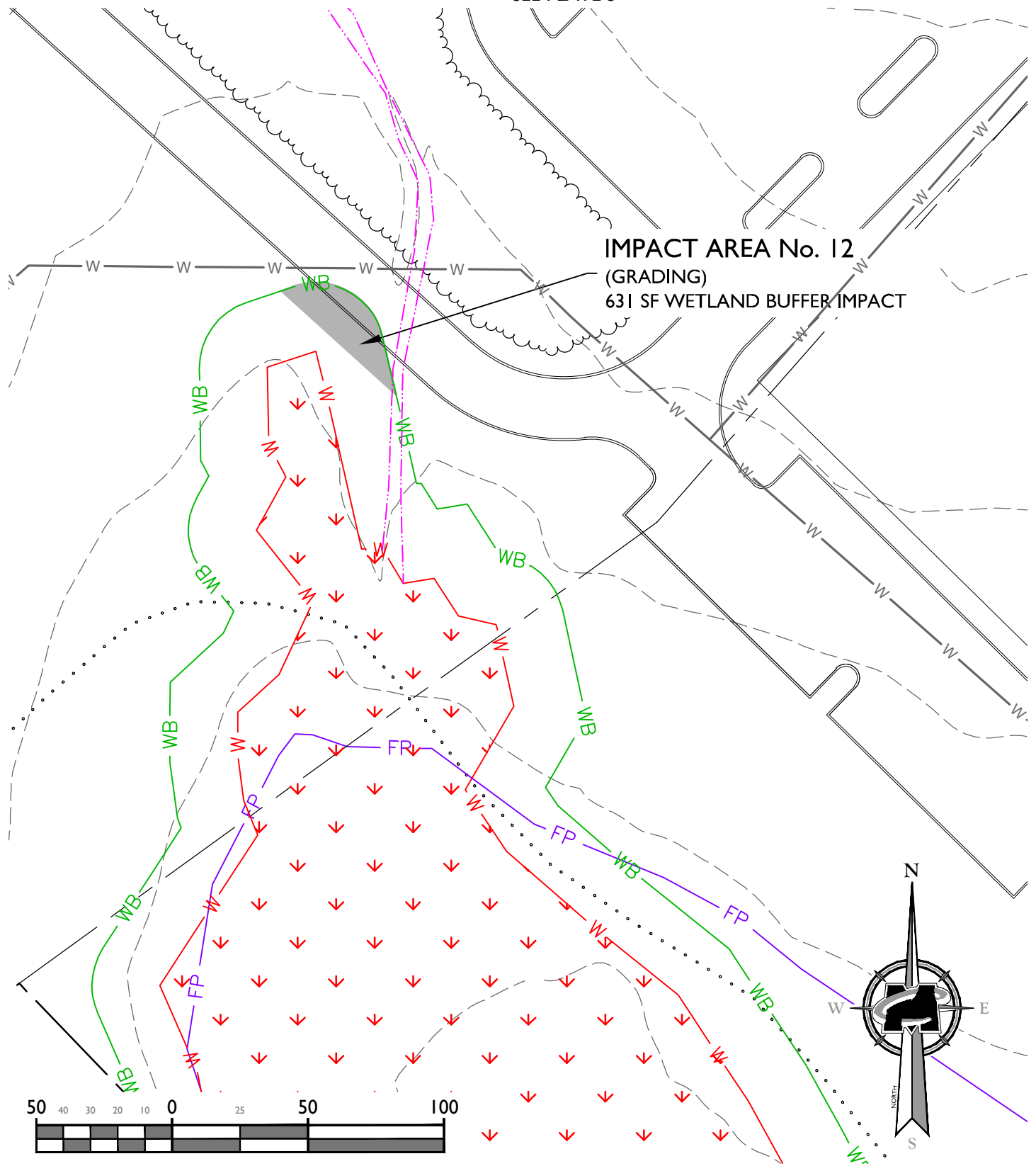
SCALE:	DATE:	DRAWN BY:	CHECKED BY:
AS SHOWN	03/19/2021	CME	JWC
PROJECT NUMBER:	DRAWING NAME:		
20000031A	C-WETLAND IMPACT PLATES		

SHEET TITLE:	
PLATE NO. 12	

SHEET NUMBER:
12 of 15

SEE PLATE 3

**IMPACT AREA No. 12
(GRADING)
631 SF WETLAND BUFFER IMPACT**



SCALE : 1" = 50'



Customer Loyalty through Client Satisfaction
www.maserconsulting.com
Engineers ■ Planners ■ Surveyors
Landscape Architects ■ Environmental Scientists

Office Locations:

- Red Bank, NJ
- Clinton, NJ
- Hamilton, NJ
- Egg Harbor, NJ
- Montvale, NJ
- Mt. Arlington, NJ
- Mt. Laurel, NJ
- Albany, NY
- Newburgh, NY
- Hawthorne, NY
- Columbia, MD
- Lehigh Valley, PA
- Exton, PA
- Philadelphia, PA
- Pittsburgh, PA
- Tampa, FL
- Orlando, FL
- Miami, FL
- Sterling, VA
- Norfolk, VA
- Albuquerque, NM
- Charlotte, NC

Copyright © 2021, Maser Consulting P.A. All Rights Reserved. This drawing and all the information contained herein is authorized for use only by the party for whom the services were contracted or to whom it is certified. This drawing may not be copied, reused, disclosed, distributed or relied upon for any other purpose without the express written consent of Maser Consulting P.A.

WETLAND IMPACT PLATES
FOR
STEPHEN'S CROSSING AT
BRANDYWINE
BRANDYWINE BUSINESS PARK
LOTS 2-21, 23-27, PARCELS A-C,
& OUTPARCEL A
BRANDYWINE
PRINCE GEORGE'S COUNTY
MARYLAND



Know what's below.
Call before you dig.
FOR STATE SPECIFIC DIRECT PHONE NUMBERS
VISIT: WWW.CALL811.COM

PROTECT YOURSELF
ALL STATES REQUIRE NOTIFICATION
OF EXCAVATORS, DESIGNERS, OR
ANY PERSON PREPARING TO
DISTURB THE EARTH'S SURFACE
ANYWHERE IN ANY STATE



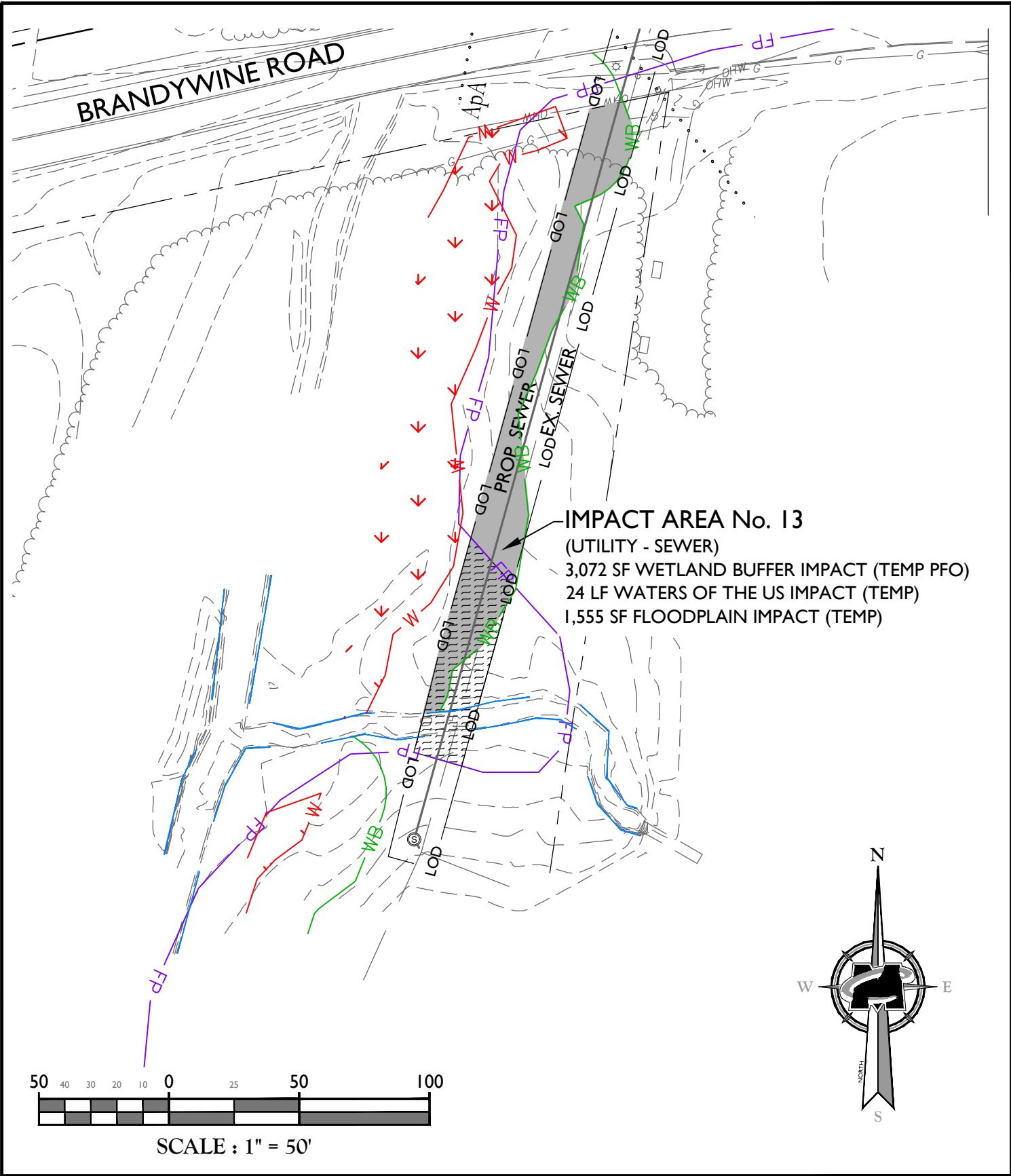
STERLING OFFICE
22375 Br orderick Drive
Suite 110
Sterling, VA 20166
Phone: 703.430.4330
Fax: 703.430.4339

IMPACT AREA No. 12

SCALE	DATE	DRAWN BY:	CHECKED BY:
AS SHOWN	03/17/2021	CME	JWC
PROJECT NUMBER	DRAWING NAME:		
20000031A	C-WETLAND IMPACT PLATES		

SHEET TITLE:
PLATE NO. 13

SHEET NUMBER:
13 of 15



MASER
CONSULTING P.A.

Customer Loyalty through Client Satisfaction
 www.maserconsulting.com
 Engineers ■ Planners ■ Surveyors
 Landscape Architects ■ Environmental Scientists

Office Locations:

- Red Bank, NJ
- Clinton, NJ
- Hamilton, NJ
- Egg Harbor, NJ
- Montvale, NJ
- Mt. Arlington, NJ
- Mt. Laurel, NJ
- Albany, NY
- Newburgh, NY
- Hawthorne, NY
- Columbia, MD
- Lehigh Valley, PA
- Exton, PA
- Philadelphia, PA
- Pittsburgh, PA
- Tampa, FL
- Orlando, FL
- Miami, FL
- Sterling, VA
- Norfolk, VA
- Albuquerque, NM
- Charlotte, NC

Copyright © 2021 Maser Consulting P.A. All Rights Reserved. This drawing and all the information contained herein is authorized for use only by the party for whom the services were contracted or to whom it is certified. This drawing may not be copied, reused, disclosed, distributed or relied upon for any other purpose without the express written consent of Maser Consulting P.A.

WETLAND IMPACT PLATES

FOR
STEPHEN'S CROSSING AT
BRANDYWINE
 15-NT-0395/201561897
BRANDYWINE BUSINESS PARK,
LOTS 2-21, 23-27, PARCELS A-C,
& OUTPARCEL A

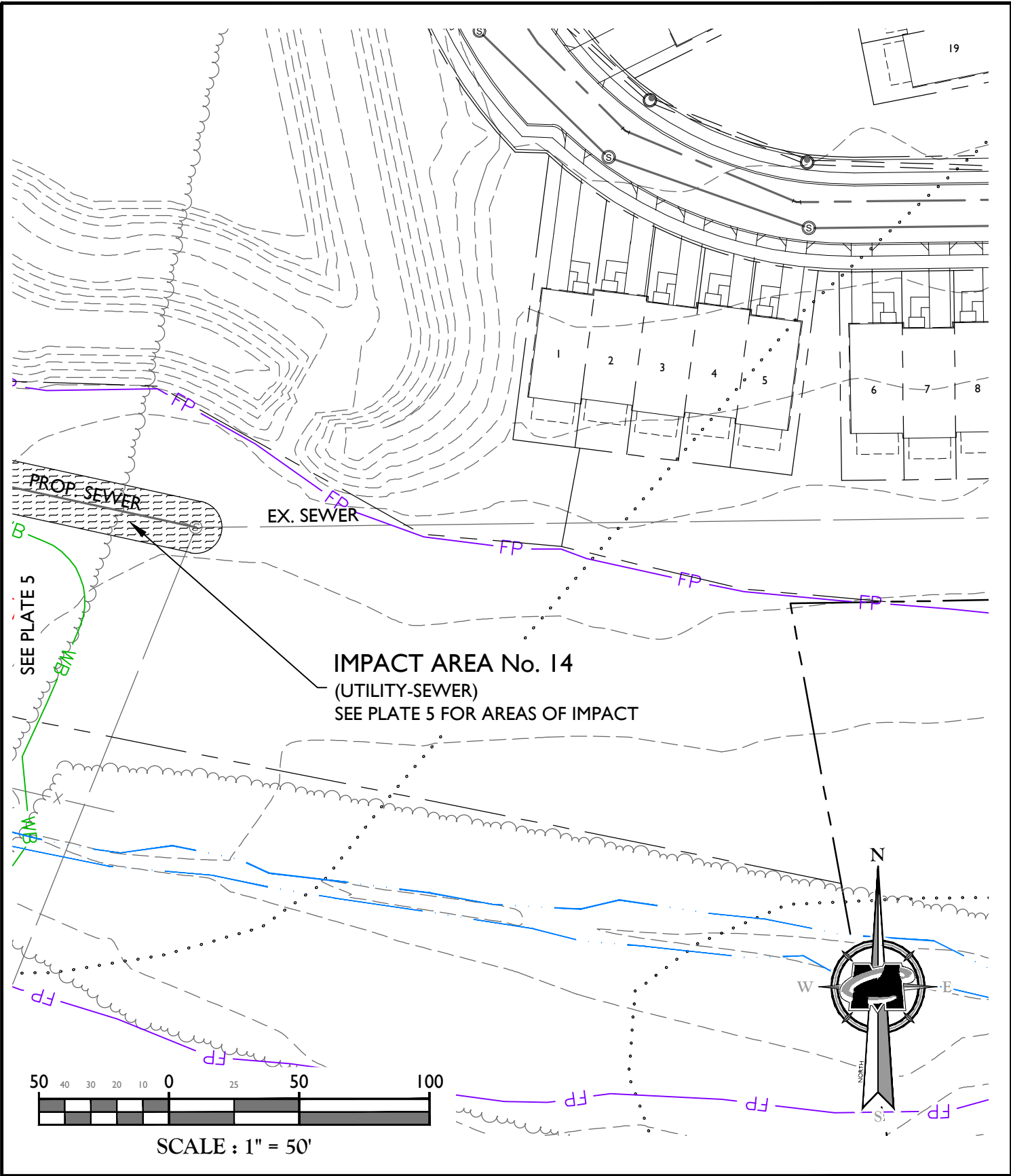
PRINCE GEORGE'S COUNTY
MARYLAND

PROTECT YOURSELF
 ALL STATES REQUIRE NOTIFICATION
 OF EXCAVATORS, DESIGNERS, OR
 ANY PERSON PREPARING TO
 DISTURB THE EARTH'S SURFACE
 ANYWHERE IN ANY STATE

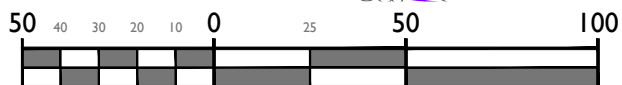
Know what's below.
 Call before you dig.
 FOR STATE SPECIFIC DIRECT PHONE NUMBERS
 VISIT: WWW.CALL811.COM

STERLING OFFICE
 22375 Broderick Drive
 Suite 110
 Sterling, VA 20166
 Phone: 703.430.4330
 Fax: 703.430.4339

IMPACT AREA No. 13			
SCALE	DATE	DRAWN BY:	CHECKED BY:
AS SHOWN	03/19/2021	CME	JWC
PROJECT NUMBER:		DRAWING NAME:	
20000031A		C-WETLAND IMPACT PLATES	
SHEET TITLE:			
PLATE NO. 14			
SHEET NUMBER:			
14 of 15			



IMPACT AREA No. 14
 (UTILITY-SEWER)
 SEE PLATE 5 FOR AREAS OF IMPACT



SCALE : 1" = 50'

MASER
CONSULTING P.A.

Customer Loyalty through Client Satisfaction
www.maserconsulting.com

Engineers ■ Planners ■ Surveyors
 Landscape Architects ■ Environmental Scientists

Office Locations:

■ Red Bank, NJ	■ Lehigh Valley, PA
■ Clinton, NJ	■ Exton, PA
■ Hamilton, NJ	■ Philadelphia, PA
■ Egg Harbor, NJ	■ Pittsburgh, PA
■ Montvale, NJ	■ Tampa, FL
■ Mt. Arlington, NJ	■ Orlando, FL
■ Mt. Laurel, NJ	■ Miami, FL
■ Albany, NY	■ Sterling, VA
■ Newburgh, NY	■ Norfolk, VA
■ Hawthorne, NY	■ Albuquerque, NM
■ Columbia, MD	■ Charlotte, NC

Copyright © 2021, Maser Consulting P.A. All Rights Reserved. This drawing and all the information contained herein is authorized for use only by the party for whom the services were contracted or to whom it is certified. This drawing may not be copied, reused, disclosed, distributed or relied upon for any other purpose without the express written consent of Maser Consulting P.A.

WETLAND IMPACT PLATES
 FOR
 STEPHEN'S CROSSING AT
 BRANDYWINE
 BRANDYWINE BUSINESS PARK
 LOTS 2-21, 23-27, PARCELS A-C,
 & OUTPARCEL A
 BRANDYWINE
 PRINCE GEORGE'S COUNTY
 MARYLAND

PROTECT YOURSELF
 ALL STATES REQUIRE NOTIFICATION
 OF EXCAVATORS, DESIGNERS, OR
 ANY PERSON PREPARING TO
 DISTURB THE EARTH'S SURFACE
 ANYWHERE IN ANY STATE

Know what's below.
 Call before you dig.
 FOR STATE SPECIFIC DIRECT PHONE NUMBERS
 VISIT: WWW.CALL811.COM

STERLING OFFICE
 22375 Br orderick Drive
 Suite 110
 Sterling, VA 20166

Phone: 703.430.4330
 Fax: 703.430.4339

IMPACT AREA No. 14			
SCALE:	DATE:	DRAWN BY:	CHECKED BY:
AS SHOWN	03/17/2021	CME	JWC
PROJECT NUMBER:	DRAWING NAME:		
20000031A	C-WETLAND IMPACT PLATES		
SHEET TITLE:			
PLATE NO. 15			
SHEET NUMBER:			
15 of 15			