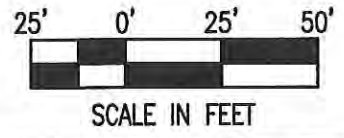
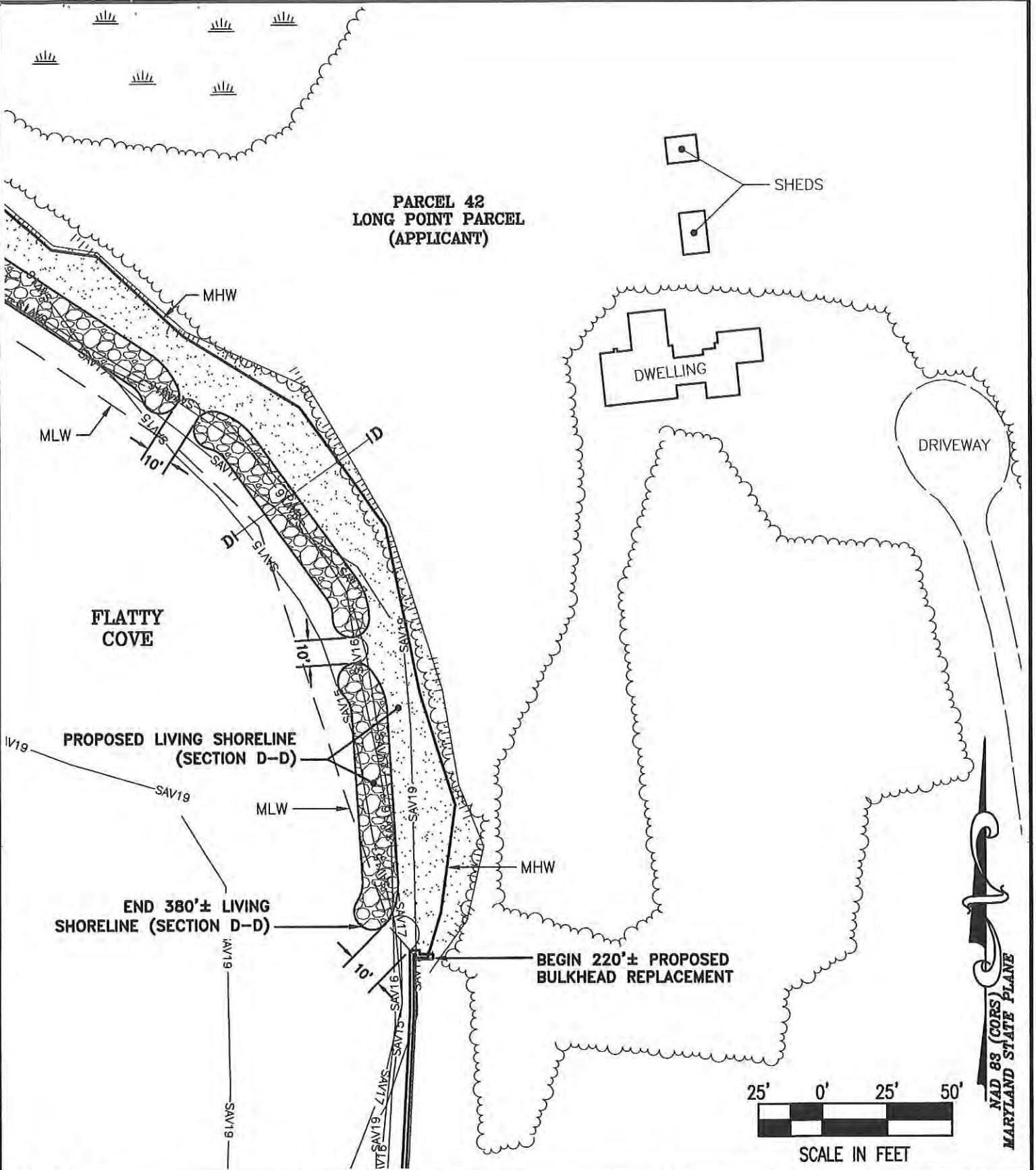


**PARCEL 42
LONG POINT PARCEL
(APPLICANT)**



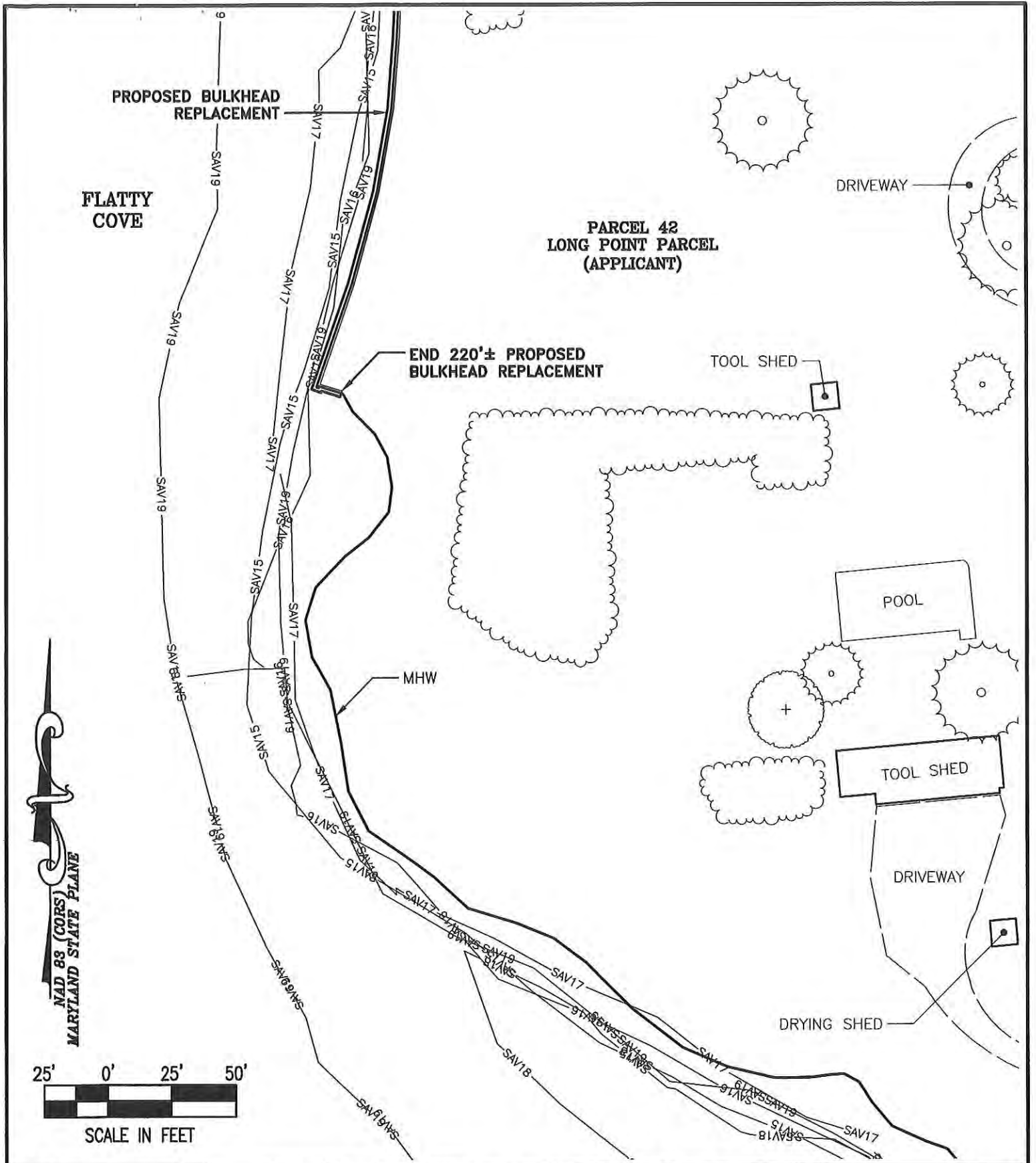
NAD 83 (CORS)
 MARYLAND STATE PLANE

SHEET No. **11**
 DATE: AS NOTED
 SCALE: AS NOTED
 JOB No. 210230
 FILE No. C553

PROPOSED IMPROVEMENTS
ON THE LANDS OF
LONG POINT PRESERVE, LLC
OXFORD, MARYLAND
 IN THE THIRD ELECTION DISTRICT, TALBOT COUNTY
 TAX MAP 47, GRID 22, PARCEL 42 (LONG POINT PARCEL)

Lane Engineering, LLC
 Established 1986
 Civil Engineers • Land Planning • Land Surveyors

E-mail: general@leinc.com
 117 Bay St. Easton, MD 21601 (410) 822-8003
 15 Washington St. Cambridge, MD 21613 (410) 221-0818
 354 Pennsylvania Ave. Centreville, MD 21617 (410) 758-2095



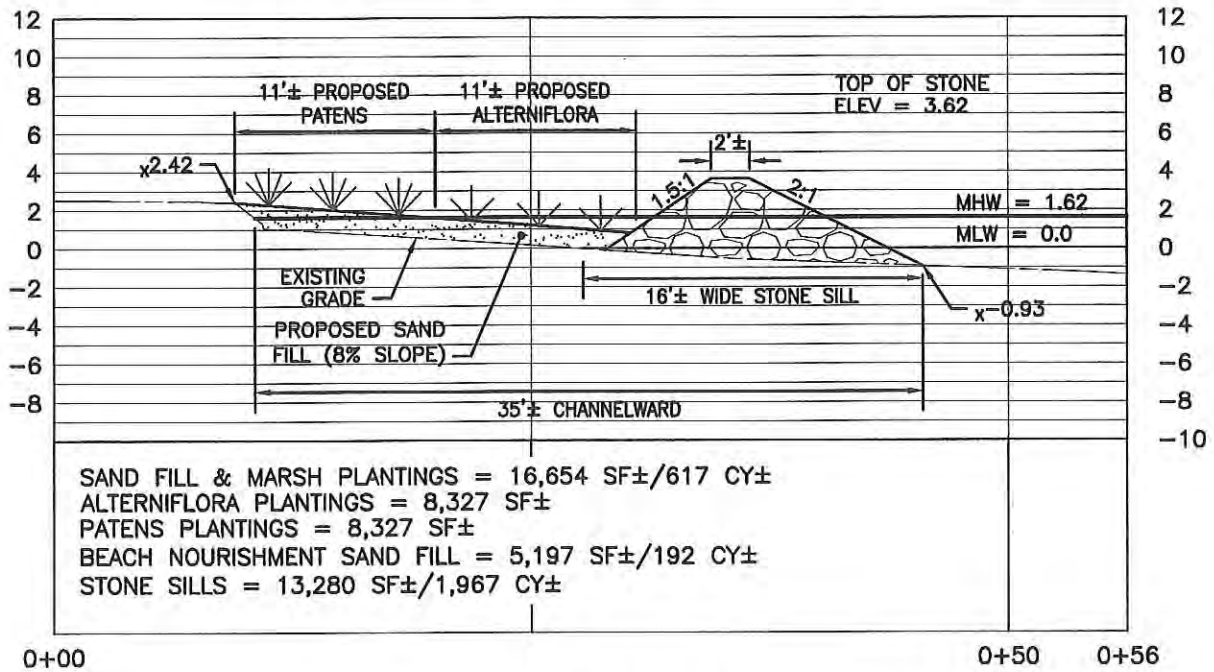
SHEET No.
12

DATE: AS NOTED
 SCALE: AS NOTED
 JOB No. 210230
 FILE No. C553

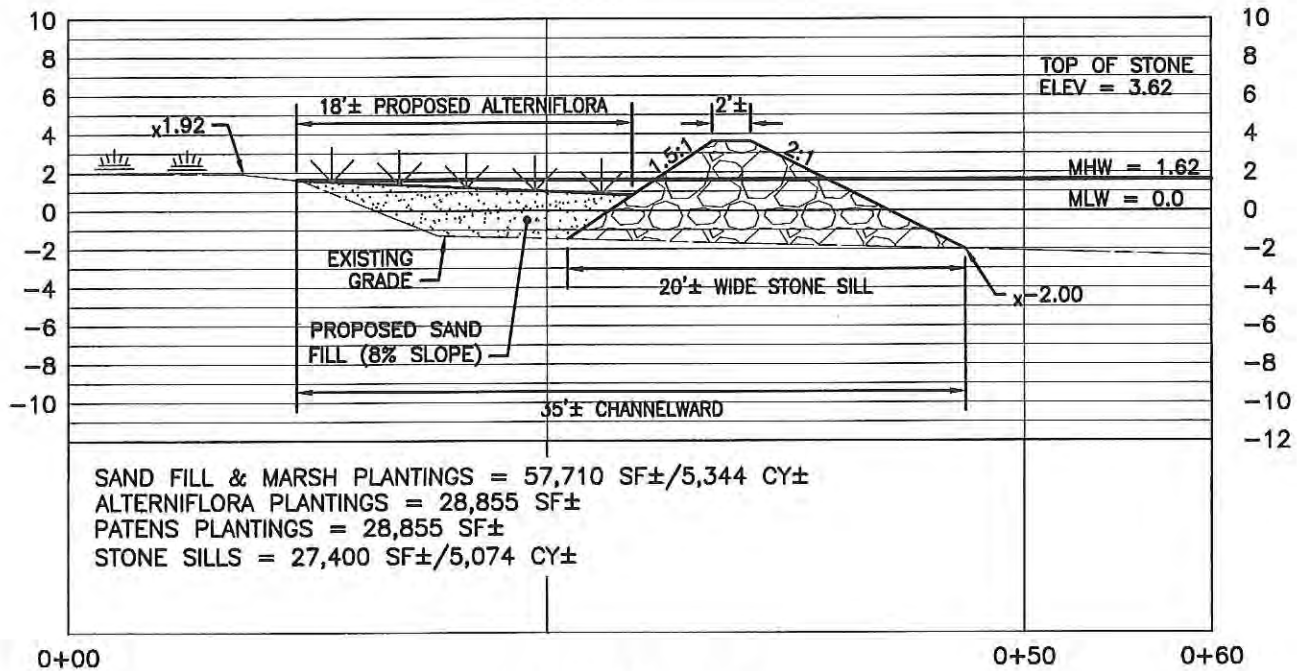
PROPOSED IMPROVEMENTS
ON THE LANDS OF
LONG POINT PRESERVE, LLC
OXFORD, MARYLAND
 IN THE THIRD ELECTION DISTRICT, TALBOT COUNTY
 TAX MAP 47, GRID 22, PARCEL 42 (LONG POINT PARCEL)

Lane Engineering, LLC
 Established 1986
 Civil Engineers • Land Planning • Land Surveyors


 E-mail: general@leinc.com
 117 Bay St. Easton, MD 21601 (410) 822-8003
 15 Washington St. Cambridge, MD 21613 (410) 221-0818
 354 Pennsylvania Ave. Centreville, MD 21617 (410) 758-2095



SECTION A-A
SCALE: 1" = 10'



SECTION B-B
SCALE: 1" = 10'

DETAILS

**ON THE LANDS OF
LONG POINT PRESERVE, LLC
OXFORD, MARYLAND**

**IN THE THIRD ELECTION DISTRICT, TALBOT COUNTY
TAX MAP 47, GRID 22, PARCEL 42 (LONG POINT PARCEL)**

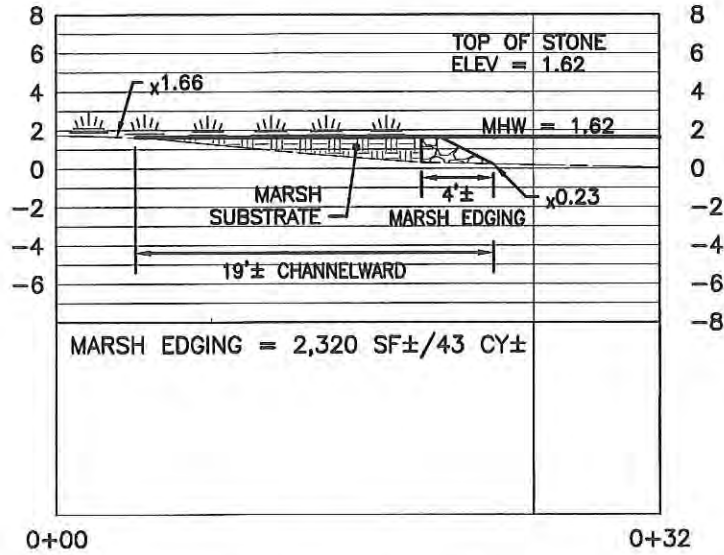
Lane Engineering, LLC

Established 1986
Civil Engineers • Land Planning • Land Surveyors

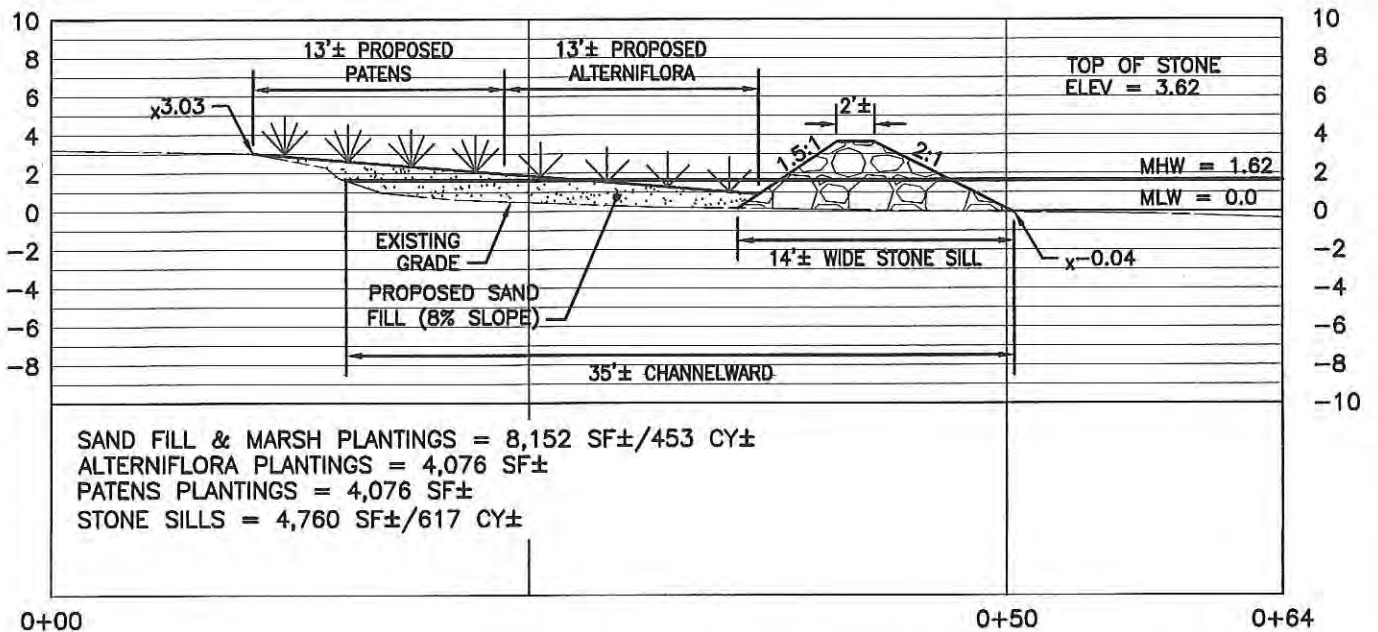


E-mail: general@leinc.com
117 Bay St. Easton, MD 21601 (410) 822-8003
15 Washington St. Cambridge, MD 21613 (410) 221-0818
354 Pennsylvania Ave. Centreville, MD 21617 (410) 758-2095

SHEET No. **13**
DATE: AS NOTED
SCALE: AS NOTED
JOB No. 210230
FILE No. C553



SECTION C-C
SCALE: 1" = 10'



SECTION D-D
SCALE: 1" = 10'

DETAILS

**ON THE LANDS OF
LONG POINT PRESERVE, LLC
OXFORD, MARYLAND**

**IN THE THIRD ELECTION DISTRICT, TALBOT COUNTY
TAX MAP 47, GRID 22, PARCEL 42 (LONG POINT PARCEL)**

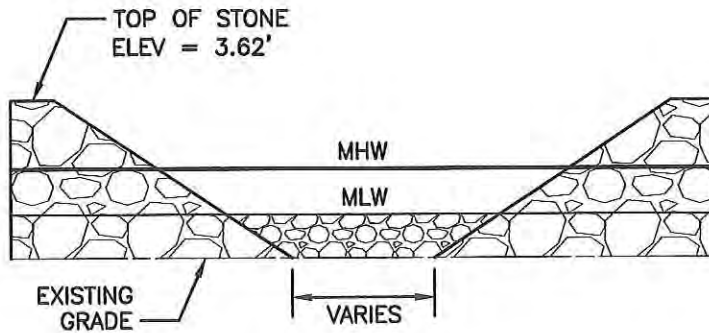
Lane Engineering, LLC

Established 1986
Civil Engineers • Land Planning • Land Surveyors

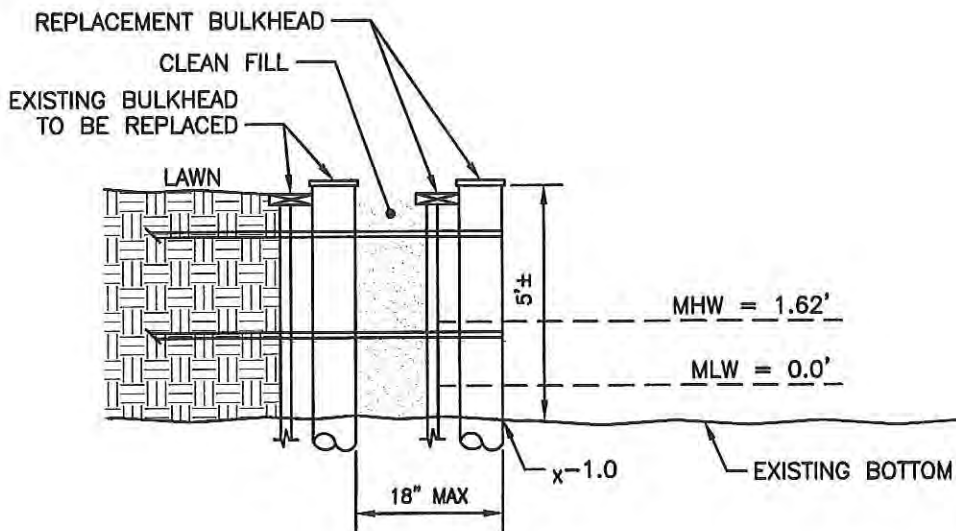


E-mail: general@leinc.com
117 Bay St. Easton, MD 21601 (410) 822-8003
15 Washington St. Cambridge, MD 21613 (410) 221-0818
354 Pennsylvania Ave. Centreville, MD 21617 (410) 758-2095

SHEET No. **14**
DATE: AS NOTED
SCALE: AS NOTED
JOB No. 210230
FILE No. C553



STONE SILL VENT DETAIL
NOT TO SCALE



BULKHEAD REPLACEMENT DETAIL
NOT TO SCALE

DETAILS

**ON THE LANDS OF
LONG POINT PRESERVE, LLC
OXFORD, MARYLAND**

**IN THE THIRD ELECTION DISTRICT, TALBOT COUNTY
TAX MAP 47, GRID 22, PARCEL 42 (LONG POINT PARCEL)**

Lane Engineering, LLC

Established 1986
Civil Engineers • Land Planning • Land Surveyors



E-mail: general@lelnc.com
117 Bay St. Easton, MD 21801 (410) 822-8003
15 Washington St. Cambridge, MD 21613 (410) 221-0818
354 Pennsylvania Ave. Centerville, MD 21617 (410) 758-2095

SHEET No.
15

DATE: AS NOTED

SCALE: AS NOTED

JOB No. 210230

FILE No. C553