

Point #	Raw Description	Northing	Easting
1	START OF CHANNEL	553617.4671	2228502.7817
2	CHANNEL TRANSITION	553607.6637	2228406.0655
3	CHANNEL TRANSITION	553607.5420	2228396.8598
4	CHANNEL TRANSITION	553604.0065	2228356.3738
5	CHANNEL TRANSITION	553590.7585	2228333.7225
6	CHANNEL TRANSITION	553586.6427	2228262.0837
7	END OF CHANNEL	553598.3400	2228239.1856

	PROPERTY BOUNDARY
	EASEMENT BOUNDARY
	EASEMENT AREA
	LIMIT OF DISTURBANCE LINE



NO.	DATE	REVISION	APPR.
AS-BUILT REVISIONS			



Eric C. Neast
 PROFESSIONAL'S SIGNATURE DATE 10-15-2021

Gannett Fleming
 207 SENATE AVE.
 CAMP HILL, PENNSYLVANIA

Kleinschmidt
 400 HISTORIC DRIVE
 STRASBURG, PENNSYLVANIA

COMMONWEALTH OF PENNSYLVANIA
 DEPARTMENT OF GENERAL SERVICES
 HARRISBURG, PENNSYLVANIA

PROJECT NO.
 D.G.S. C-0148-0001 PHASE 1

CONSTRUCTION OF FISH PASSAGE
 ON THE SUSQUEHANNA RIVER
 SHIKELLAMY STATE PARK
 NORTHUMBERLAND AND SNYDER COUNTIES, PA

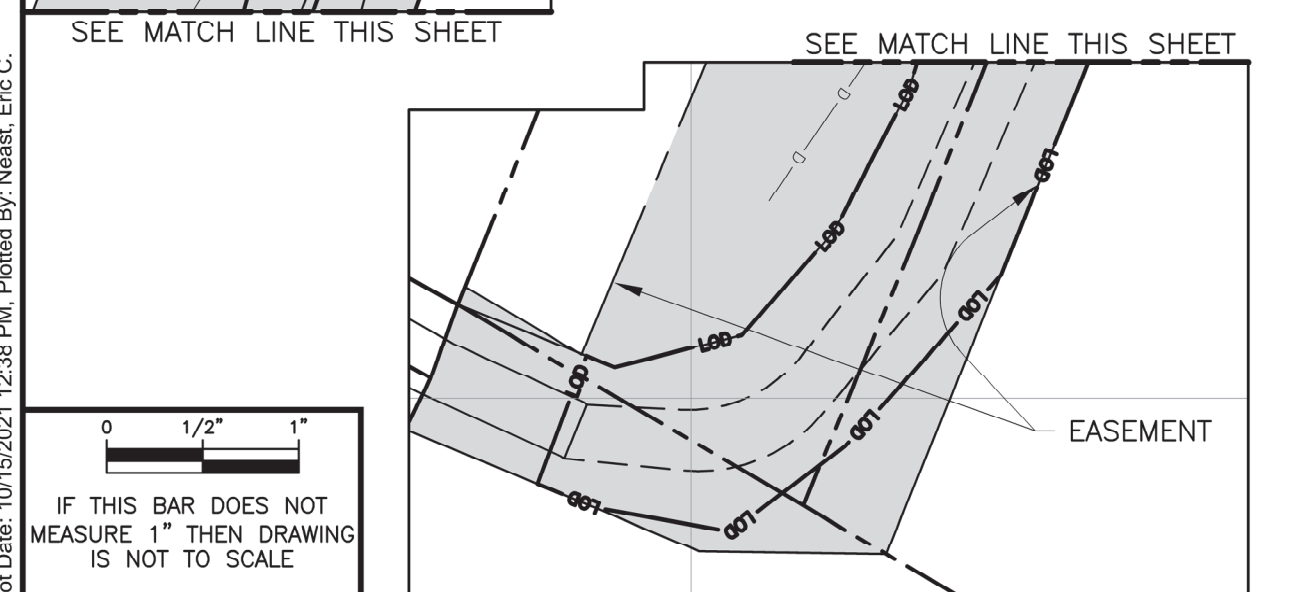
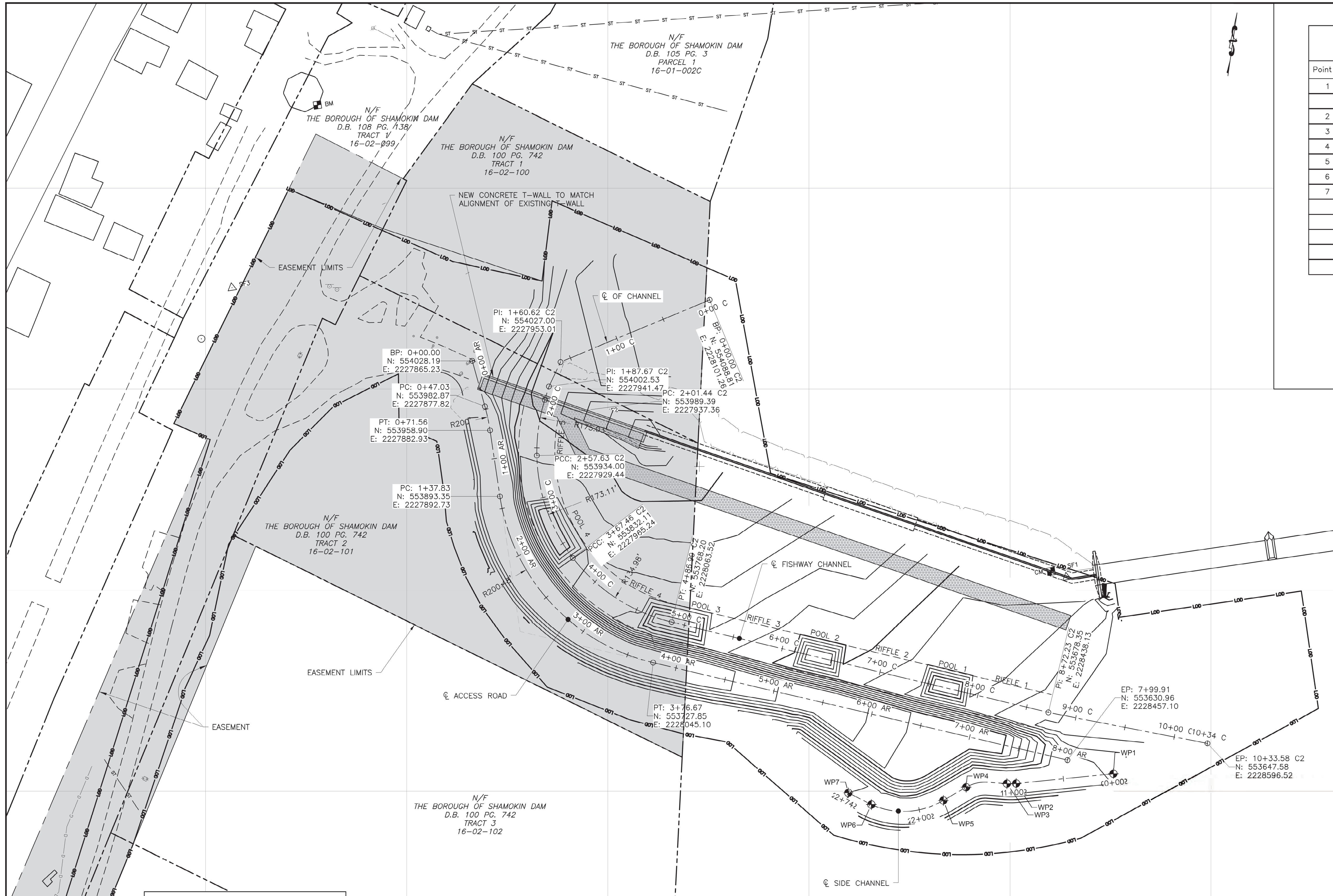
GEOMETRIC LAYOUT OF FISHWAY

DRAWN BY RMD / JPH	DATE OCTOBER 2021	DRAWING NO. C-3
CHECKED BY TLK / PGS	SCALE AS SHOWN	

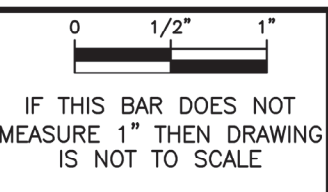
ALL WORK ON THIS DRAWING IS TO BE INCLUDED BY THE GENERAL CONTRACTOR.

ID	NORTHING (FT.)	EASTING (FT.)	ELEVATION (FT.)	DESCRIPTION
SF1	553,812.69	2,228,456.34	429.41	CHISELED MARK ON CONCRETE
SF2	553,974.15	2,227,991.30	429.40	CHISELED MARK ON CONCRETE
SF3	554,100.86	2,227,626.35	435.18	IRON PIN WITH CAP
BM	N/A	N/A	445.78	CUT IN CONCRETE PATIO AT EASTERN COLUMN
CM	N/A	N/A	429.43	DISK IN T-WALL

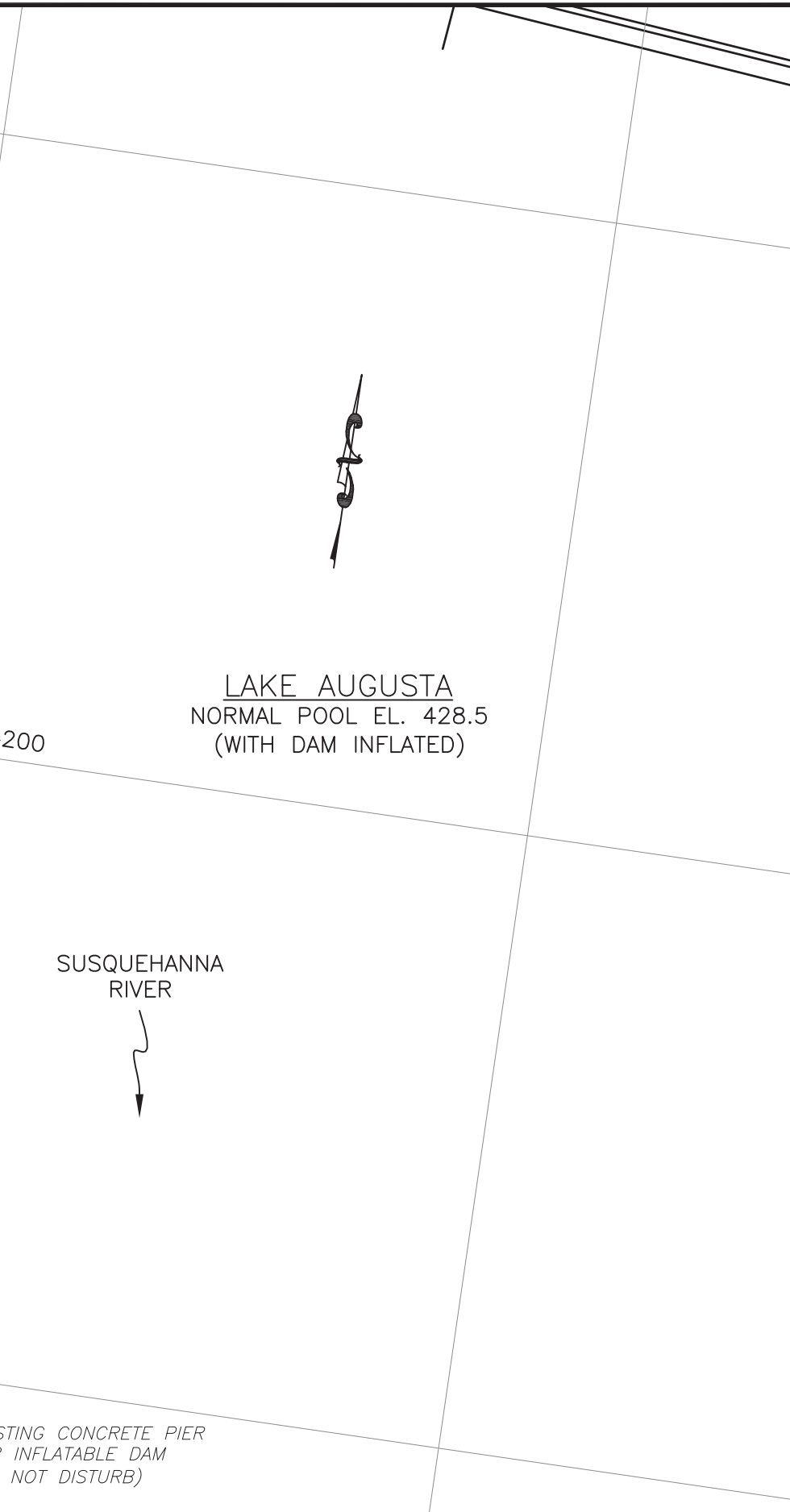
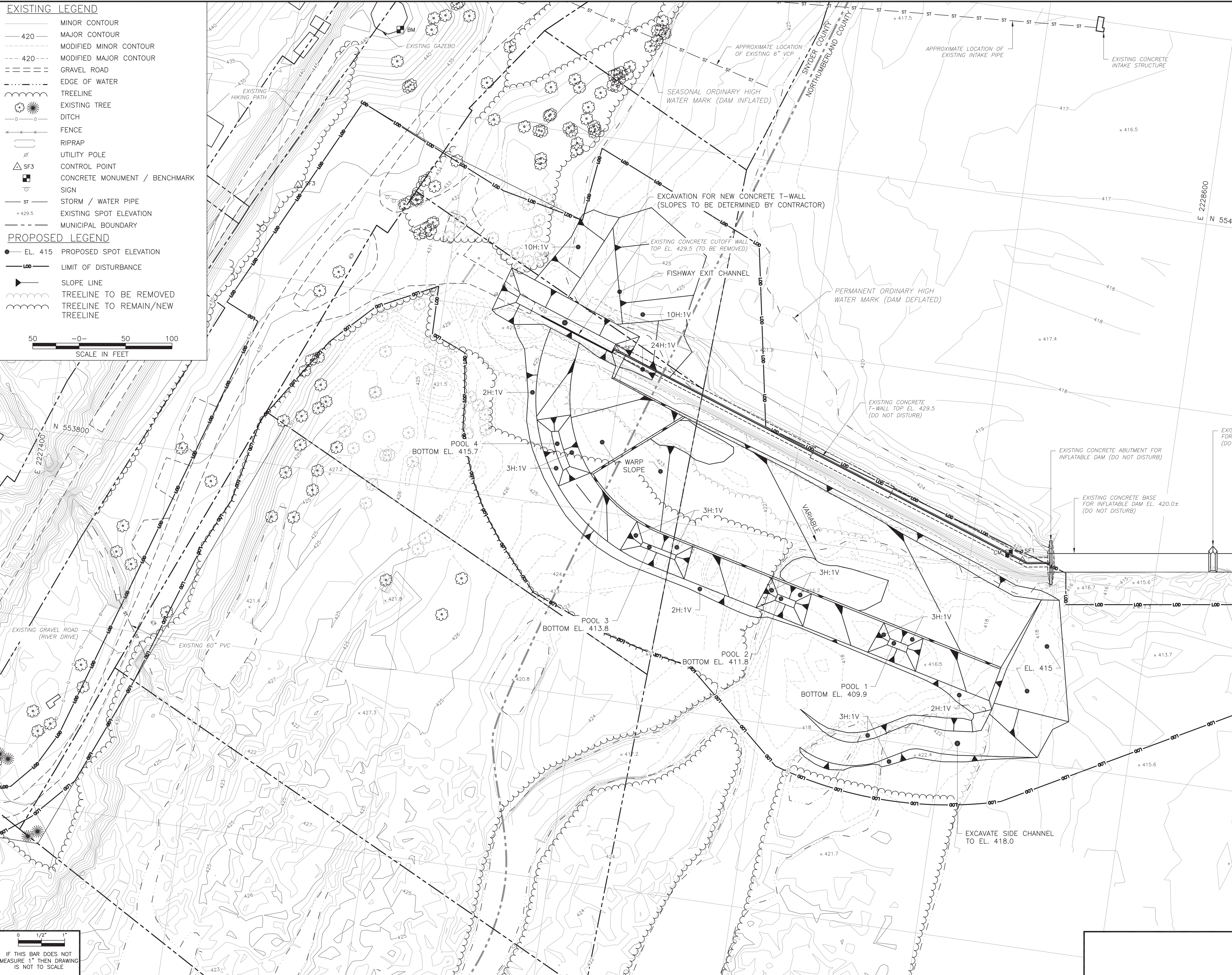
	SF2	CONTROL POINT
	BM	CONCRETE MONUMENT / BENCHMARK
	WP1	WORKING POINT



C:\Earth Sciences\CRD\Div 4\N\GD\1062916\FIN\DCS_Summary\CAD\Design_Sett\C-3 Layout Plans.dwg
 Plot Date: 10/15/2021 12:38 PM, Plotted By: Neast, Eric C.



- EXISTING LEGEND**
- MINOR CONTOUR
 - - - MAJOR CONTOUR
 - · - · - · MODIFIED MINOR CONTOUR
 - · - · - · MODIFIED MAJOR CONTOUR
 - ▬▬▬ GRAVEL ROAD
 - - - EDGE OF WATER
 - ⊙ TREELINE
 - ⊙ EXISTING TREE
 - - - DITCH
 - ⊕ FENCE
 - ⊕ RIPRAP
 - ⊕ UTILITY POLE
 - △ SF3 CONTROL POINT
 - ⊕ CONCRETE MONUMENT / BENCHMARK
 - ⊕ SIGN
 - ST — STORM / WATER PIPE
 - x 429.5 EXISTING SPOT ELEVATION
 - - - MUNICIPAL BOUNDARY
- PROPOSED LEGEND**
- EL. 415 PROPOSED SPOT ELEVATION
 - L00 — LIMIT OF DISTURBANCE
 - ▲ SLOPE LINE
 - ⊙ TREELINE TO BE REMOVED
 - ⊙ TREELINE TO REMAIN/NEW TREELINE
- 50 — 0 — 50 100
SCALE IN FEET



NO.	DATE	REVISION	APPR.
AS-BUILT REVISIONS			

Eric C. Neast
 PROFESSIONAL'S SIGNATURE 10-15-2021
 DATE

Gannett Fleming
 207 SENATE AVE.
 CAMP HILL, PENNSYLVANIA

Kleinschmidt
 400 HISTORIC DRIVE
 STRASBURG, PENNSYLVANIA

COMMONWEALTH OF PENNSYLVANIA
DEPARTMENT OF GENERAL SERVICES
HARRISBURG, PENNSYLVANIA

PROJECT NO.
D.G.S. C-0148-0001 PHASE 1

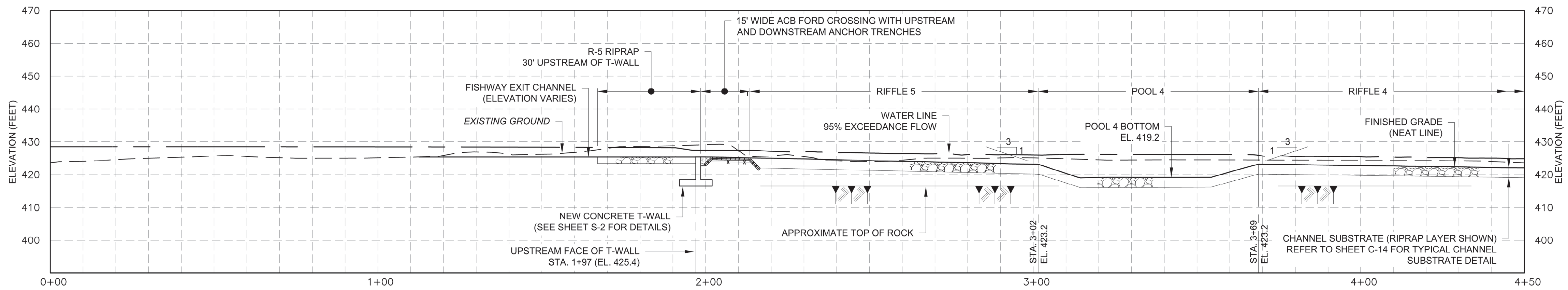
CONSTRUCTION OF FISH PASSAGE
ON THE SUSQUEHANNA RIVER
SHIKELLAMY STATE PARK
NORTHUMBERLAND AND SNYDER COUNTIES, PA

EXCAVATION PLAN

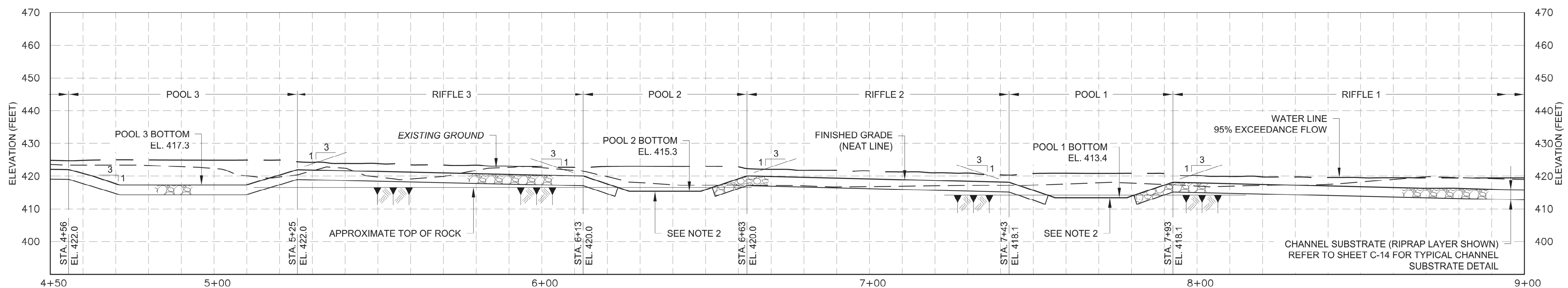
DRAWN BY J.P.H.	DATE OCTOBER 2021	DRAWING NO. C-4
CHECKED BY P.G.S.	SCALE AS SHOWN	

C:\Earth Sciences\CGS\DWG\10152021\10152021_259.Plot.dwg, Plot Date: 10/15/2021 2:59 PM, Plotted By: Neast, Eric C.

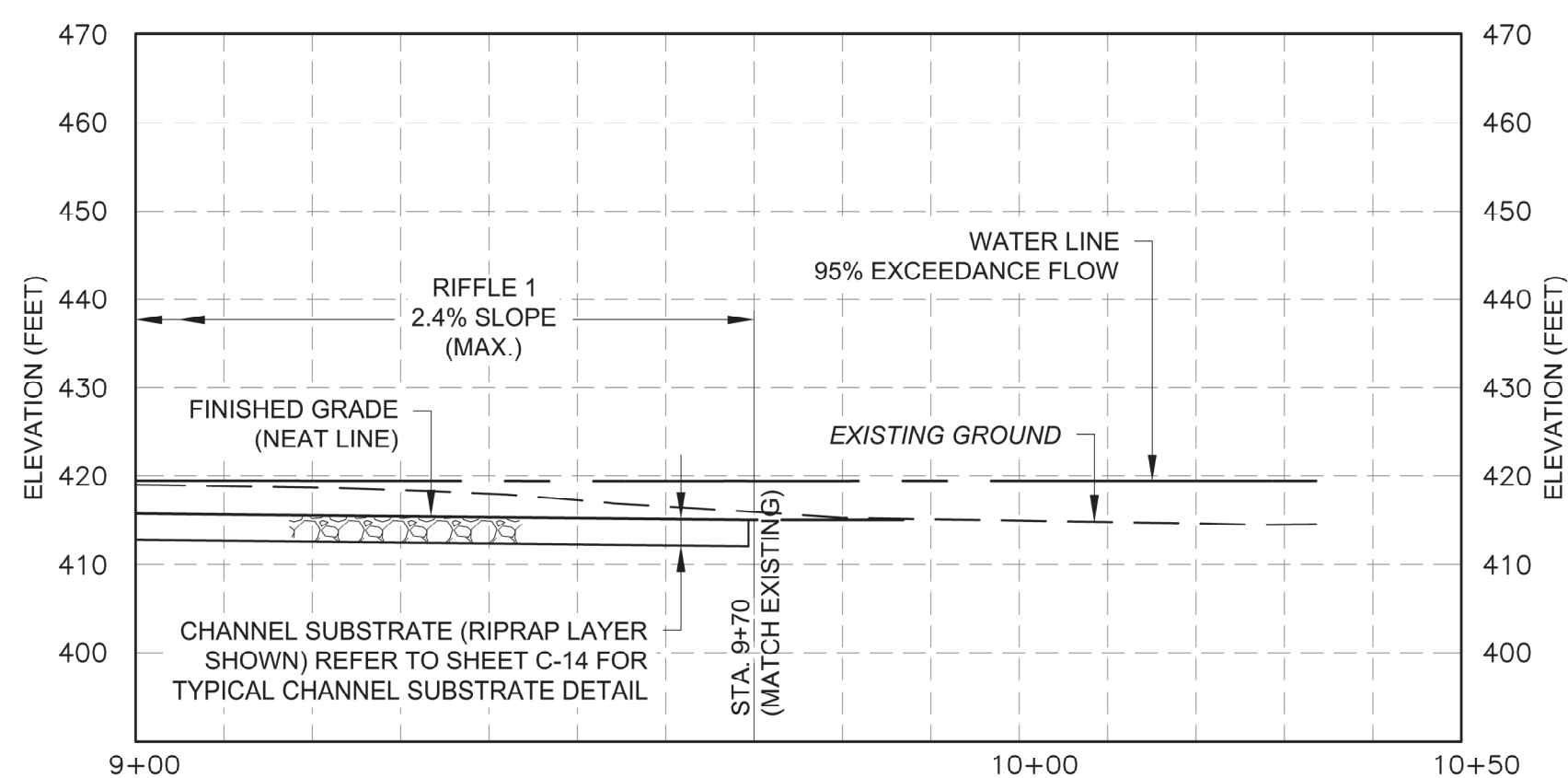
IF THIS BAR DOES NOT MEASURE 1" THEN DRAWING IS NOT TO SCALE



CENTERLINE OF FISHWAY CHANNEL PROFILE (SECTION A-A)
STA 0+00 TO STA. 4+50
 SCALE: 1" = 20'



CENTERLINE OF FISHWAY CHANNEL PROFILE (SECTION A-A)
STA 4+50 TO STA. 9+00
 SCALE: 1" = 20'



CENTERLINE OF FISHWAY CHANNEL PROFILE (SECTION A-A)
STA 9+00 TO STA. 10+50
 SCALE: 1" = 20'

C:\Earth Sciences\CRD\Div 4\W\GDH\062516\FINDES_Summary\CADD\Design_Sett\C-5 PROFILE OF NLF.dwg
 Plot Date: 10/15/2021 1:47 PM. Plotted By: Neast, Eric C.

0 1/2" 1"
 IF THIS BAR DOES NOT MEASURE 1" THEN DRAWING IS NOT TO SCALE

NOTES:

1. PROFILE IS THROUGH CENTERLINE OF FISHWAY CHANNEL. ELEVATIONS LISTED AT TOP OF EACH POOL ARE AT THE CENTERLINE OF THE FISHWAY CHANNEL. ELEVATIONS ALONG THE CREST OF EACH POOL WILL VARY LATERALLY. REFER TO SHEETS C-8 AND C-9 FOR ADDITIONAL SPOT ELEVATIONS.
2. CONSULT ENGINEER IF BEDROCK IS ENCOUNTERED. REMOVE BEDROCK IN RIFFLES AS NEEDED TO ESTABLISH FULL RIPRAP THICKNESS. IN POOL AREAS, EXCAVATE BEDROCK AS NEEDED TO ESTABLISH FINAL GRADES (OVER-EXCAVATION OF BEDROCK IN POOL AREAS NOT REQUIRED TO ESTABLISH FULL RIPRAP THICKNESS).
3. REFER TO SHEET C-2 FOR LOCATION OF SECTION A-A.
4. BOULDERS OMITTED FROM THIS PROFILE FOR CLARITY. REFER TO SHEETS C-2, C-10, AND C-14 FOR BOULDER LAYOUT AND DETAILS.

NO.	DATE	REVISION	APPR.
AS-BUILT REVISIONS			



Eric C. Neast 10-15-2021
 PROFESSIONAL'S SIGNATURE DATE

Gannett Fleming
 207 SENATE AVE.
 CAMP HILL, PENNSYLVANIA

Kleinschmidt
 400 HISTORIC DRIVE
 STRASBURG, PENNSYLVANIA

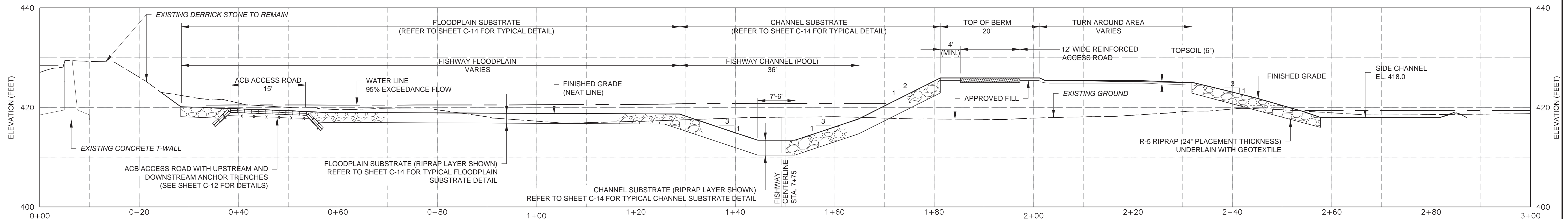
COMMONWEALTH OF PENNSYLVANIA
 DEPARTMENT OF GENERAL SERVICES
 HARRISBURG, PENNSYLVANIA

PROJECT NO.
 D.G.S. C-0148-0001 PHASE 1

CONSTRUCTION OF FISH PASSAGE
 ON THE SUSQUEHANNA RIVER
 SHIKELLAMY STATE PARK
 NORTHUMBERLAND AND SNYDER COUNTIES, PA

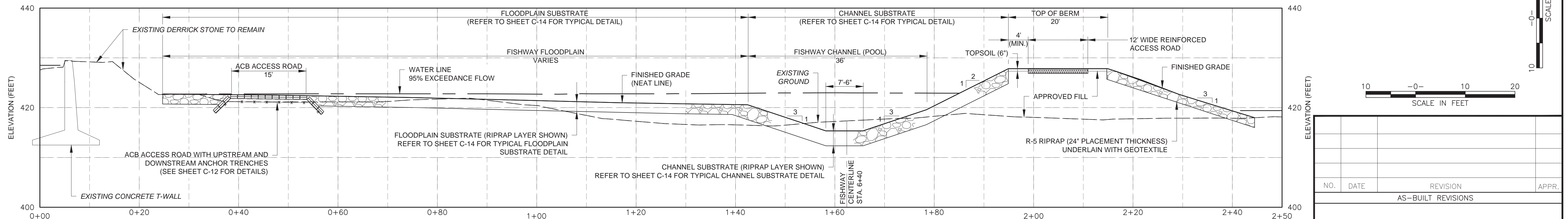
PROFILE OF CENTERLINE OF CHANNEL

DRAWN BY RMD / JPH	DATE OCTOBER 2021	DRAWING NO. C-5
CHECKED BY TLK / PGS	SCALE AS SHOWN	



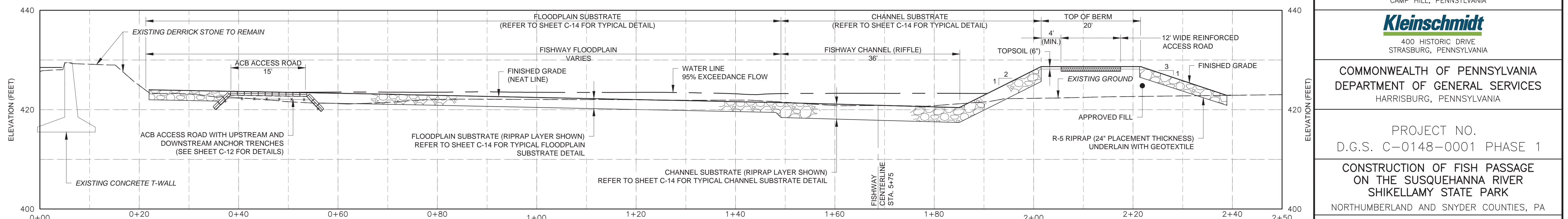
CROSS SECTION THROUGH FISHWAY AT FISHWAY CHANNEL CENTERLINE STATION 7+75
(SECTION B-B)

SCALE: 1" = 10'



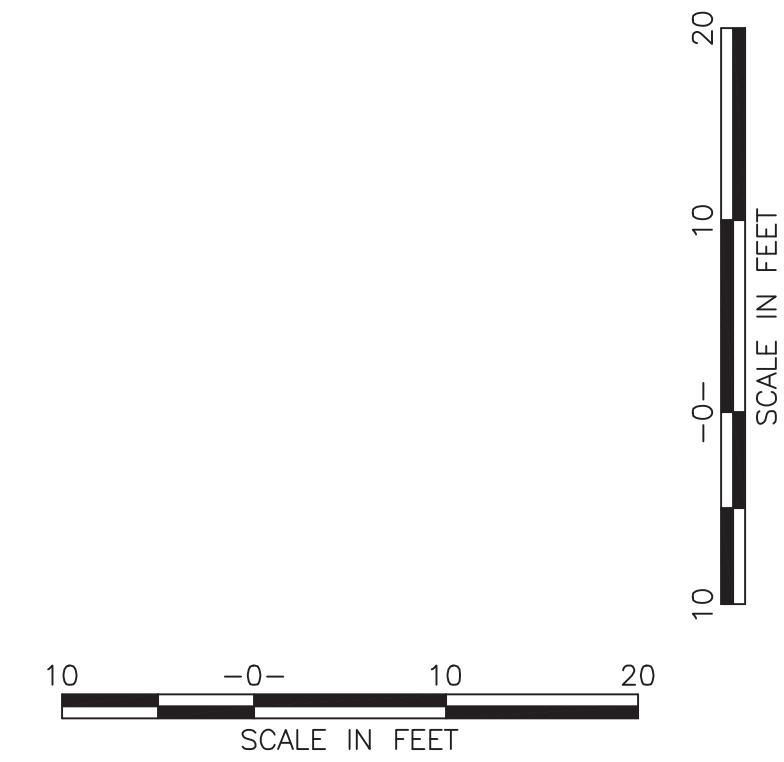
CROSS SECTION THROUGH FISHWAY AT FISHWAY CHANNEL CENTERLINE STATION 6+40
(SECTION D-D)

SCALE: 1" = 10'



CROSS SECTION THROUGH FISHWAY AT FISHWAY CHANNEL CENTERLINE STATION 5+75
(SECTION E-E)

SCALE: 1" = 10'



NO.	DATE	REVISION	APPR.
AS-BUILT REVISIONS			



Eric C. Neast
PROFESSIONAL'S SIGNATURE DATE 10-15-2021

Gannett Fleming
207 SENATE AVE.
CAMP HILL, PENNSYLVANIA

Kleinschmidt
400 HISTORIC DRIVE
STRASBURG, PENNSYLVANIA

COMMONWEALTH OF PENNSYLVANIA
DEPARTMENT OF GENERAL SERVICES
HARRISBURG, PENNSYLVANIA

PROJECT NO.
D.G.S. C-0148-0001 PHASE 1

CONSTRUCTION OF FISH PASSAGE
ON THE SUSQUEHANNA RIVER
SHIKELLAMY STATE PARK
NORTHUMBERLAND AND SNYDER COUNTIES, PA

FISHWAY SECTIONS

DRAWN BY J.P.H.	DATE OCTOBER 2021	DRAWING NO. C-6
CHECKED BY E.C.N.	SCALE AS SHOWN	

- NOTES:
- REFER TO SHEET C-2 FOR LOCATION OF CROSS SECTIONS.
 - CHANNEL BOULDERS AND FLOODPLAIN BOULDERS NOT SHOWN FOR CLARITY.

C:\Earth Sciences\CRS\DWG\4\1\GSD\060625\BANDS_Sunbury\CA\DD\Design_SectC-6_TYPICAL_RIFFLE_PLAN_AND_SECTIONS.dwg
 Plot Date: 10/15/2021 2:02 PM. Plotted By: Neast, Eric C.

