

Water Resources

Treasury evaluated potential impacts to water resources associated with the Proposed Action.

Existing Conditions

- Treasury conducted a **Waters of the US Delineation**:
 - 2 intermittent streams on-site, which drain to Beaverdam Creek
 - 6 on-site wetlands totaling 2.94 acres
- Stormwater drains to Indian Creek and Beaverdam Creek in the Anacostia Watershed
- Average depth to groundwater is 10.3 feet
- Under No Action Alternative, **no impacts** on water resources would occur

Water Resources EPMs and RCMs

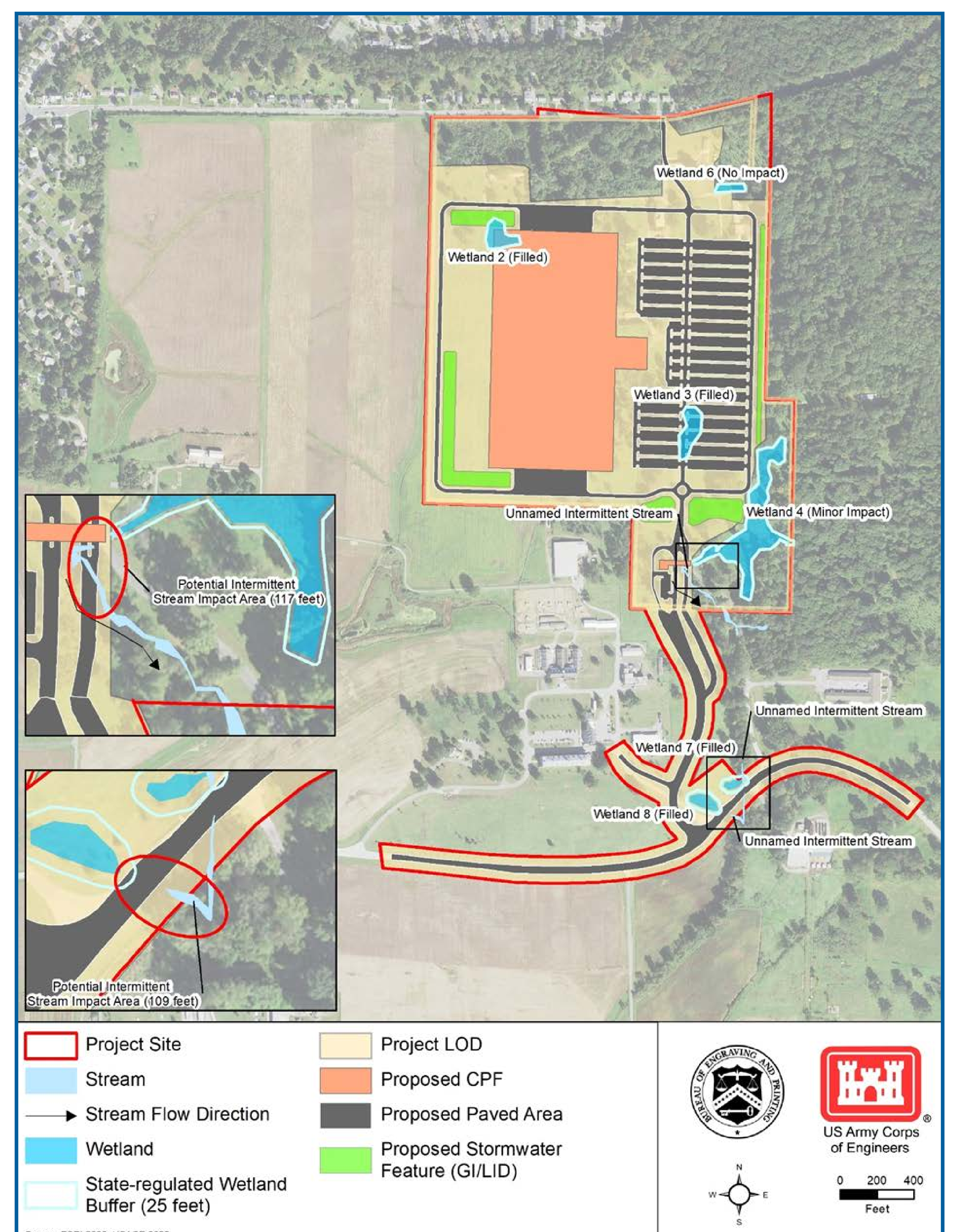
- Adhere to applicable federal and state permitting and mitigation requirements (e.g., Clean Water Act, NPDES)
- Incorporate green infrastructure and low-impact development features
- Minimize potential groundwater impacts
- Maintain discharge permit for the BARC East Wastewater Treatment Plant

Additional Potential Mitigation Measures

- Modify the limits of disturbance to avoid 117 feet of stream
- Conduct excavation activities at the Project Site when the groundwater table is seasonally lower (e.g., late summer or early fall)

Potential Impacts from Preferred Alternative

- Diversion or fill of approximately 226 linear feet of stream (**potentially significant adverse impact**)
- Permanent fill of 0.94 acre of wetlands and 0.65 acre of wetland buffer
- Potential increased stormwater volume and runoff, sedimentation, and soil contamination
- Discharge of wastewater to local treatment plant



Potential Water Resources Impacts from Preferred Alternative