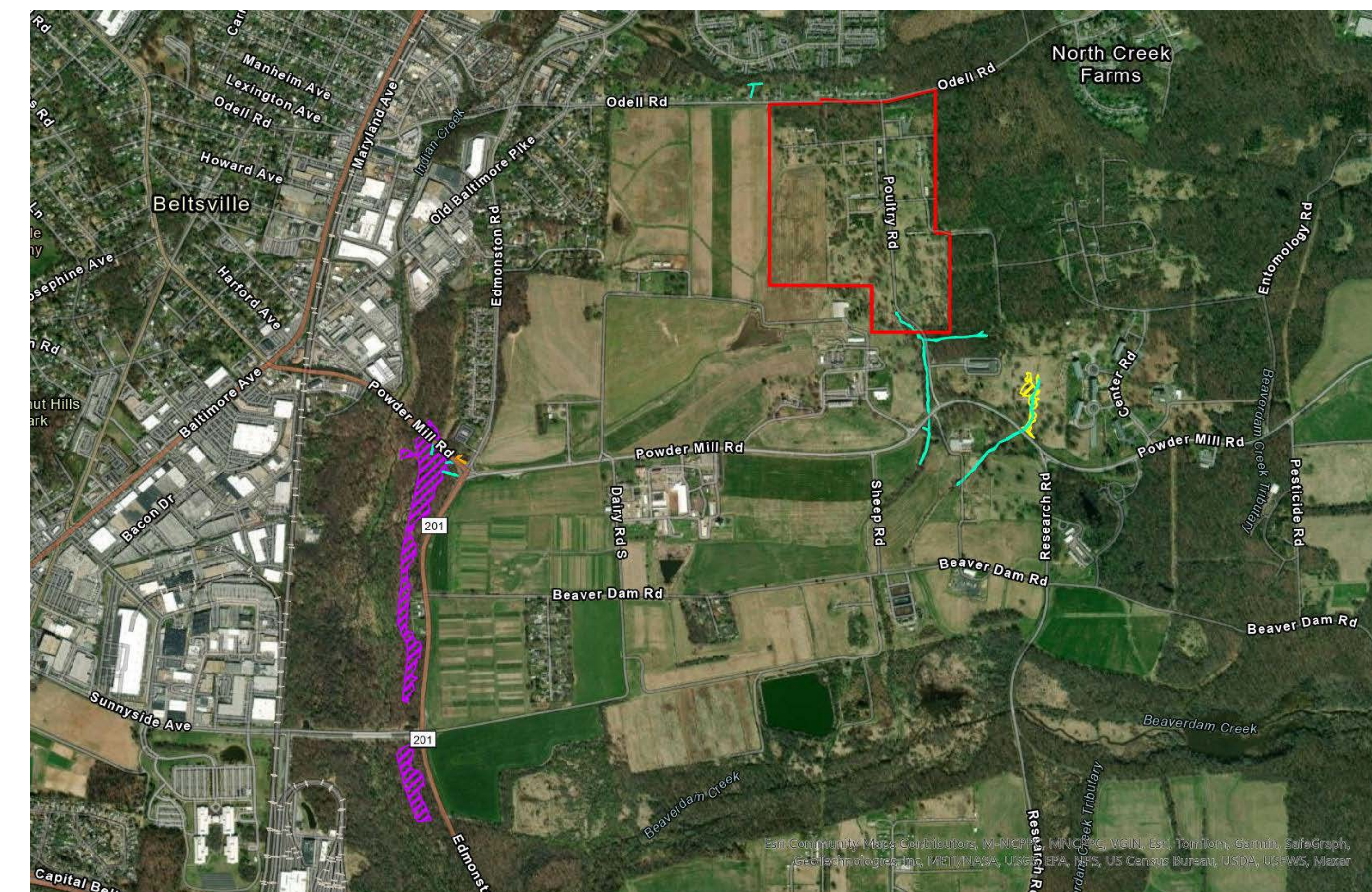


Resource areas to be analyzed in the EA include:

- Land use
- Aesthetics and visual resources
- Air quality
- Noise
- Soils and topography
- Water resources, including wetlands and floodplains
- Biological resources
- Cultural resources
- Socioeconomics and environmental justice
- Traffic and transportation
- Utilities
- Hazardous and toxic materials and waste
- Cumulative effects

Environmental surveys completed to date:

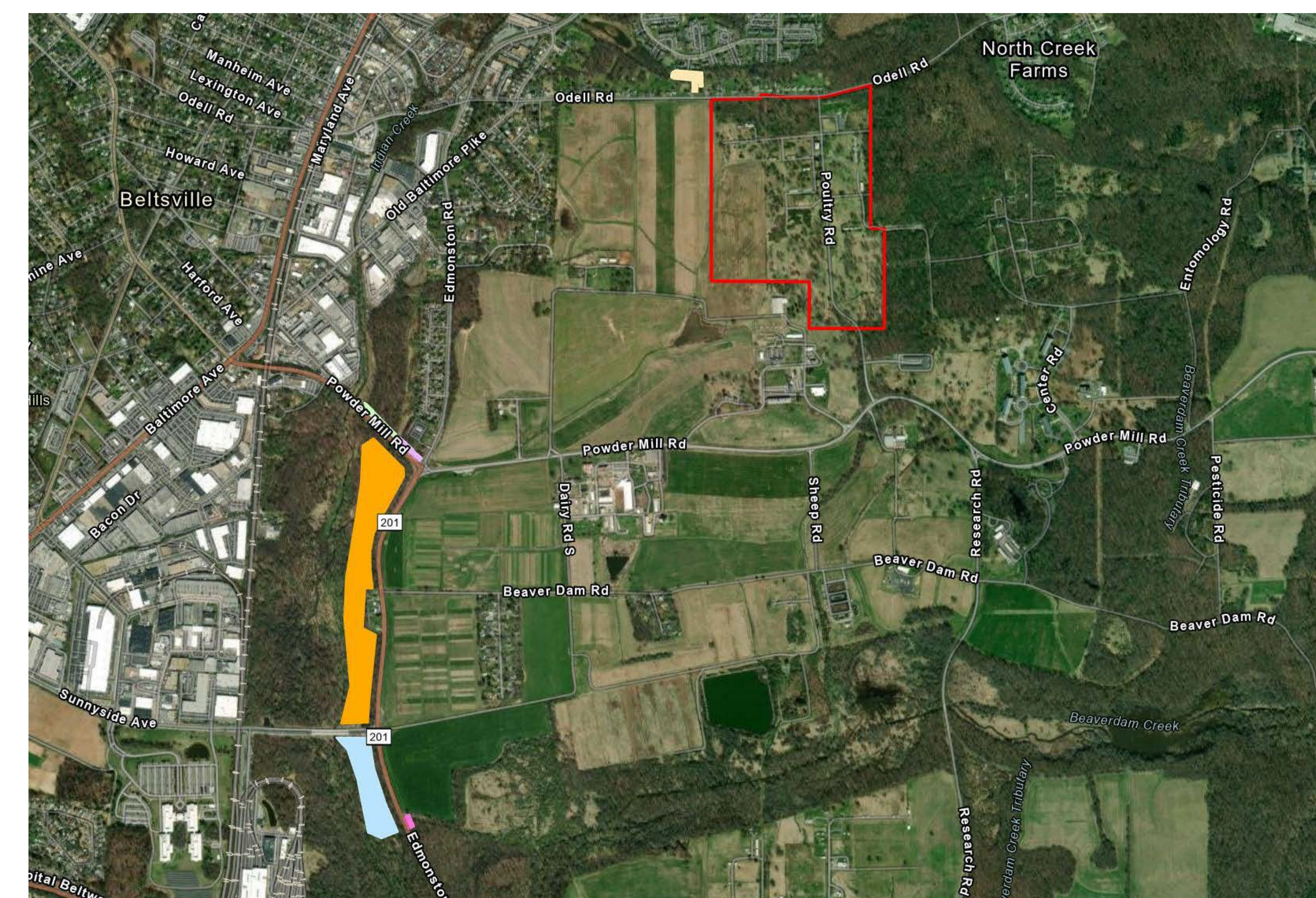
- Wetland delineations: completed fall 2023
- Forest stand delineations: completed fall 2023
- Phase I archeological surveys: completed fall 2023



Existing Conditions - Wetlands and Streams



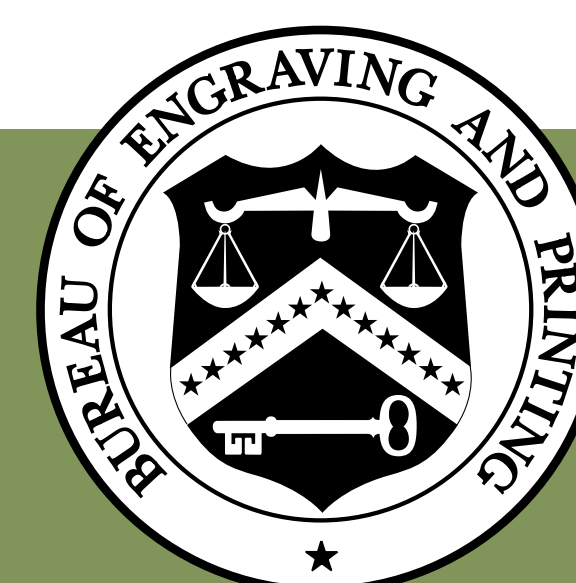
Legend for Existing Conditions - Wetlands and Streams:
■ BEP Boundary
— All Streams
▨ PEM1A
▨ PEM1Ax
▨ PFO1A
PEM = palustrine emergent wetlands
PFO = palustrine forested wetlands



Existing Conditions - Forest Stands



Legend for Existing Conditions - Forest Stands:
■ BEP Boundary
■ Stand T1
■ Stand T2
■ Stand T3
■ Stand T4
■ Stand T5
■ Stand T6



Áreas de Recursos Ambientales

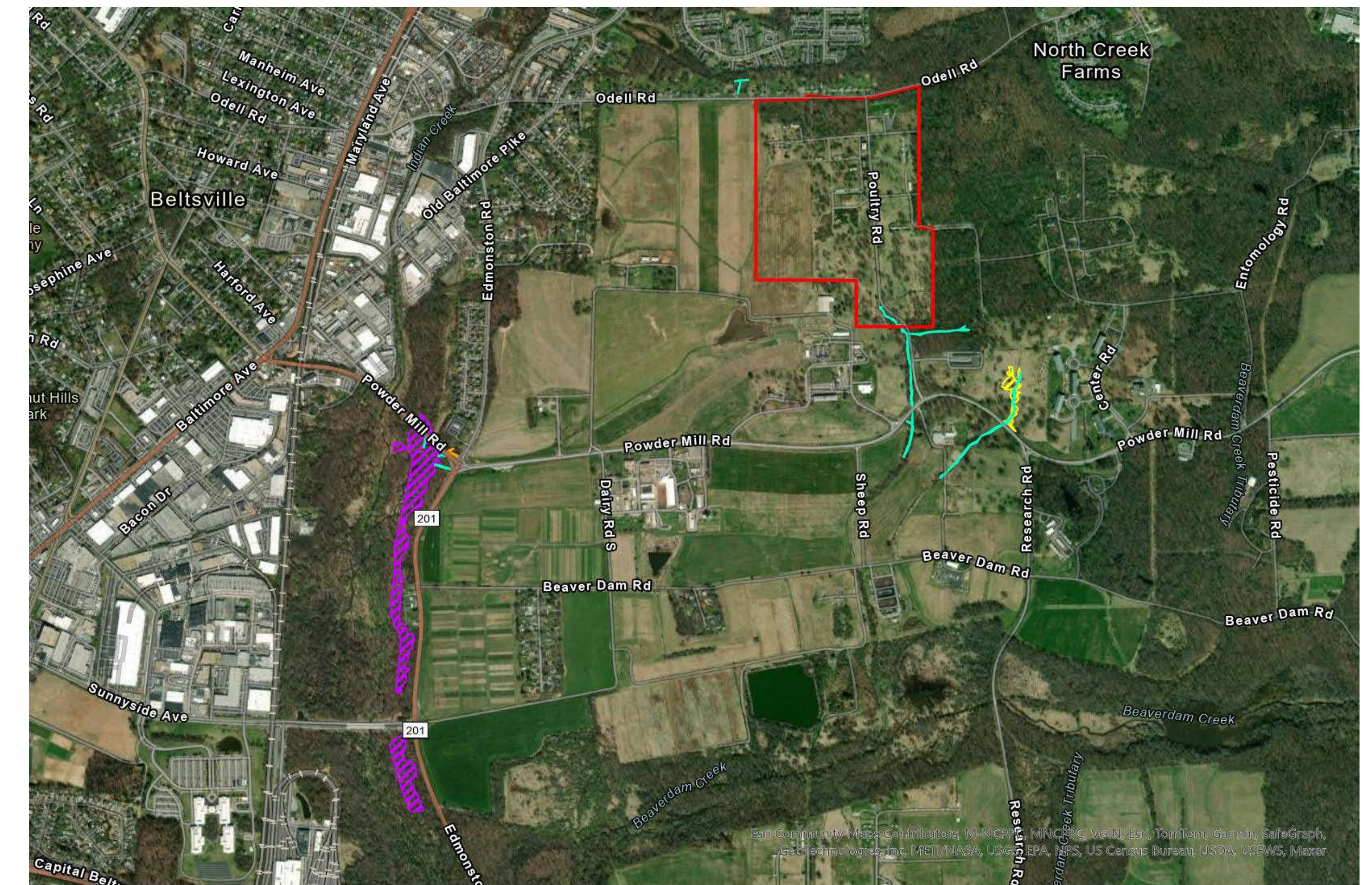
Oficina de Grabado e Impresión (BEP*)
Mitigación de Tráfico y Servicios Públicos

Las áreas de recursos a ser analizadas en el EA incluyen:

- o Uso de terreno
- o Estética y recursos visuales
- o Calidad del aire
- o Ruido
- o Suelos y topografía
- o Recursos de agua, incluyendo humedales y zonas de inundación
- o Recursos biológicos
- o Recursos culturales
- o Socioeconomía y justicia ambiental
- o Tráfico y transportación
- o Utilidades
- o Materiales nocivos y tóxicos y desperdicios
- o Efectos acumulativos

Evaluaciones ambientales completadas al día de hoy:

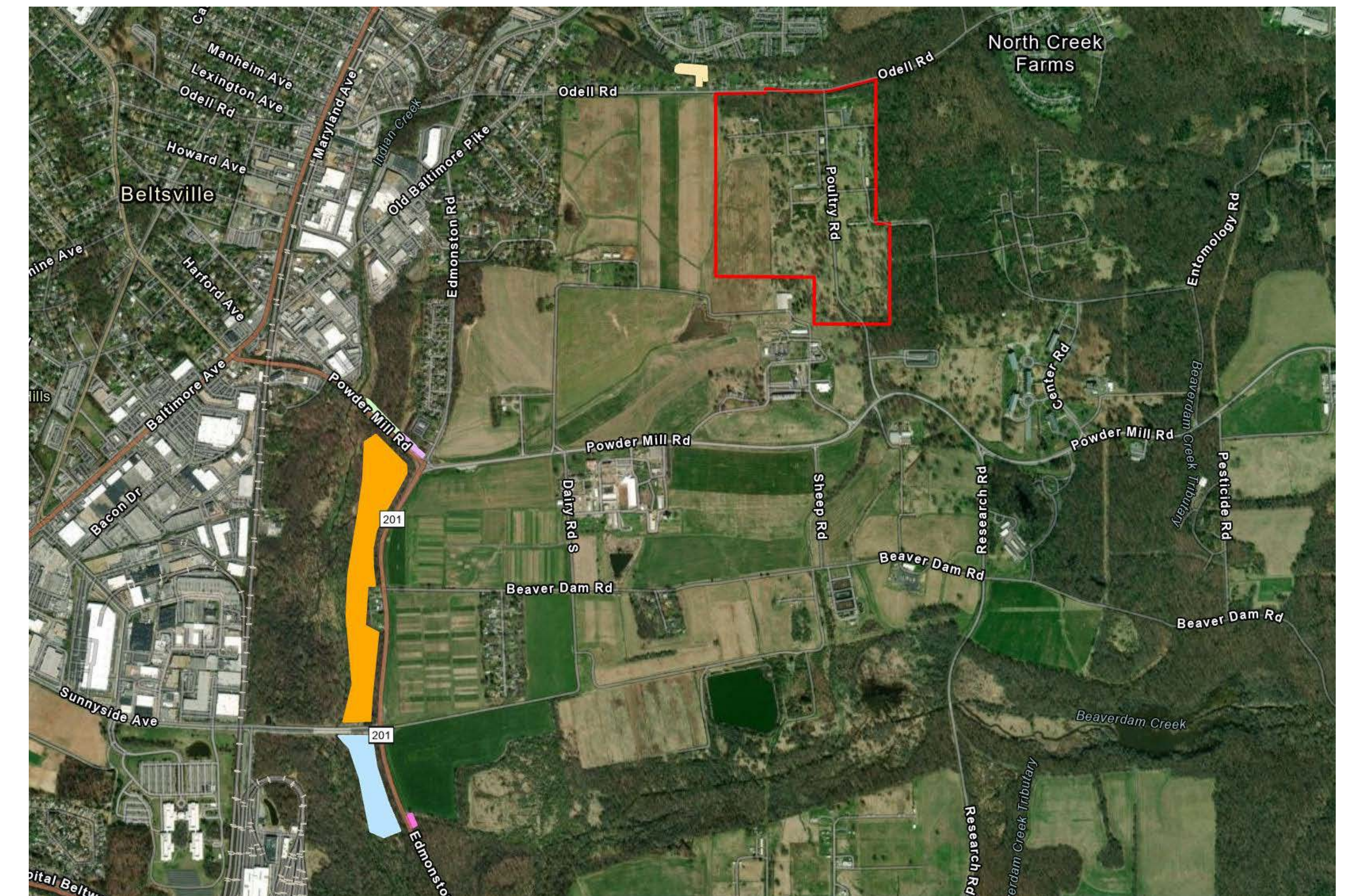
- o Delineación de humedales: completados en otoño de 2023
- o Delineación de masa forestal: completados en otoño de 2023
- o Fase 1 de evaluaciones arqueológicas: completados en otoño de 2023



Existing Conditions - Wetlands and Streams



Legend for Wetlands and Streams:
- BEP Boundary (Red outline)
- All Streams (Blue line)
- PFO1A (Yellow area)
- PEM1A (Orange area)
- PEM1Ax (Purple area)
- PFM = palustrine emergent wetlands
- PFO = palustrine forested wetlands



Existing Conditions - Forest Stands



Legend for Forest Stands:
- BEP Boundary (Red outline)
- Stand T1 (Light Green area)
- Stand T2 (Purple area)
- Stand T3 (Orange area)
- Stand T4 (Light Blue area)
- Stand T5 (Pink area)
- Stand T6 (Yellow area)

