

**Building 202 – Boiler House**  
**USDA**  
**Bureau of Engraving and Printing EIS**  
**Beltsville, Prince George’s County, Maryland**  
**1934**

Building 202 was constructed in 1934 and used as a Boiler House on the Central Farm within the U.S. Department of Agriculture’s (USDA) Agricultural Research Service’s Beltsville Agricultural Research Center (BARC). It was built in an area used by the Bureau of Animal Industry (BAI). Building 202 is a rectangular plan (east-west axis), single-story (with mezzanine), Georgian Revival-style building. The building, which is built into a hillside, rests on a concrete slab foundation that supports masonry walls clad in Flemish bond brick. The side-gable roof with wood cornice has collapsed due to a fire which occurred in 2016. However, a portion of it retains its slate shingles. The primary (south) elevation, which displays three bays, features a projecting single-story portion that is clad in rusticated stone. This part of the building features the main entrance, which are replacement metal double doors. Windows along this elevation are 16-light metal awning windows with decorative brick lintels, surround, and sills. The glass lights have been shattered. The east elevation, which displays two bays, features the number “202” at the top. Windows along this elevation are 12-light metal awning windows with decorative brick lintels, surround, and sills. The glass lights have been shattered. The west elevation, which displays three bays, features a central window with an arched surround. The base of this elevation is clad in rusticated stone. Windows along this elevation are 16-light metal awning windows with decorative brick lintels, surround, and sills. The glass lights have been shattered. The north elevation, which displays three bays, features three 16-light metal awning windows with decorative brick lintels, surround, and sills.

Building 202 is located on BARC’s 2,980-acre Central Farm, the largest and oldest of all of BARC’s farms. The USDA acquired the Central Farm in stages between 1910 and 1939; most of the buildings and landscape of the Central Farm were developed between 1911 and 1944. During the 1920s, the BAI’s Animal Husbandry Division led the continued development of the site and was the largest section (i.e., in terms of both areas occupied and staff) at BARC. The division’s research initially focused on the breeding of all domestic animals, except dairy (Robinson and Associates 1998). The BAI transferred other divisions to BARC during the late 1920s and early 1930s using New Deal funding sources at the Central and East Farms; the Swine Research unit was relocated from the Central Farm to the East Farm during the period between 1938 and 1942 (Robinson and Associates 1998). Over the years, the BAI’s Animal Husbandry Division undertook critical poultry and swine research that improved the size and health of the farm animals; the BAI’s researchers conducted important research at BARC that led to major improvements in eradicating and treating contagious diseases in farm animals, reducing parasite infestations, and improving nutrition.

In 1997, BARC determined eligible for individual listing in the National Register for Historic Places (NRHP) as the largest national research facility for the USDA and for its role as the most diversified agricultural research complex in the world. The evaluation finds that while Building 202 is not individually significant, it contributes to the overall significance of BARC. Building 202 is a contributing property within BARC under Criterion A at the national level for its historical association with agricultural experimentation and under Criterion C as it embodies the distinctive characteristics of experimental agricultural architecture.

**MARYLAND HISTORICAL TRUST  
DETERMINATION OF ELIGIBILITY FORM**

NR Eligible: yes   
no

Property Name: Building 202: Boiler House Inventory Number: PG:62-81

Address: 10300 Baltimore Avenue Building 202, Central Farm, Beltsville  
Agricultural Research Center (BARC) Historic district:  yes  no

City: Beltsville Zip Code: 20705 County: Prince Georges

USGS Quadrangle(s): Beltsville

Property Owner: U.S.A. - U.S. Department of Agriculture (USDA) Tax Account ID Number: 01-0070151

Tax Map Parcel Number(s): 0143 Tax Map Number: 0019

Project: Bureau of Engraving and Printing EIS Agency: USACE-Baltimore District

Agency Prepared By: AECOM

Preparer's Name: Rebecca McGovern Date Prepared: 7/15/2020

Documentation is presented in: MIHP Form, PG:62-14

Preparer's Eligibility Recommendation:  Eligibility recommended  Eligibility not recommended

Criteria:  A  B  C  D Considerations:  A  B  C  D  E  F  G

*Complete if the property is a contributing or non-contributing resource to a NR district/property:*

Name of the District/Property: Beltsville Agricultural Research Center

Inventory Number: PG:62-14 Eligible:  yes Listed:  yes

Site visit by MHT Staff  yes  no Name: \_\_\_\_\_ Date: \_\_\_\_\_

Description of Property and Justification: *(Please attach map and photo)*

The U.S. Department of Agriculture's (USDA) Agricultural Research Service's (ARS) Beltsville Agricultural Research Center (BARC) was one of the largest agricultural research facilities in the United States (Figures 1 and 2). Owned by the USDA, the facility was established in Beltsville in 1910 and significantly expanded in the 1930s and 1940s. In the 1960s, the USDA's research program began evolving from an internationally recognized research center to a decentralized model. In 1984, BARC was re-designated as a regional center. BARC's period of significance ranges from its inception in 1910 to its reclassification as a regional center in 1984.

**BUILDING LOCATION**

BARC identifies the address of Building 202 as 10300 Baltimore Avenue, Building 202, Central Farm. Building 202 is located 190' north of Animal Husbandry Road and 840' north of Powder Mill Road.

**MARYLAND HISTORICAL TRUST REVIEW**

Eligibility recommended  Eligibility not recommended

Criteria:  A  B  C  D Considerations:  A  B  C  D  E  F  G

**MHT Comments:**

\_\_\_\_\_  
**Reviewer, Office of Preservation Services** \_\_\_\_\_  
**Date**

\_\_\_\_\_  
**Reviewer, National Register Program** \_\_\_\_\_  
**Date**

## BUILDING DESCRIPTION

Located in the USDA ARS BARC's Central Farm (Figures 3 through 6), Building 202 (Photos 1-4) was built as a boiler house. Building 202 is a rectangular plan (east-west axis), single-story (with mezzanine), Georgian Revival-style building. The building, which is built into a hillside, rests on a concrete slab foundation that supports masonry walls clad in Flemish bond brick. The side-gable roof with wood cornice has collapsed due to a fire which occurred in 2016. However, a portion of it retains its slate shingles.

The primary (south) elevation, which displays three bays, features a projecting single-story portion that is clad in rusticated stone (Photo 1). This part of the building features the main entrance, which are replacement metal double doors. Windows along this elevation are 16-light metal awning windows with decorative brick lintels, surround, and sills. The glass lights have been shattered.

The east elevation, which displays two bays, features the number "202" at the top (Photo 1). Windows along this elevation are 12-light metal awning windows with decorative brick lintels, surround, and sills. The glass lights have been shattered.

The west elevation, which displays three bays, features a central window with an arched surround (Photo 2 and 3). The base of this elevation is clad in rusticated stone. Windows along this elevation are 16-light metal awning windows with decorative brick lintels, surround, and sills. The glass lights have been shattered.

The north elevation, which displays three bays, features three 16-light metal awning windows with decorative brick lintels, surround, and sills (Photo 4). Building 202, which has been damaged by fire, is in poor condition.

Historic plans of the Building 202 depict a diverse interior program to include a boiler room, machinery room, and transformer room related to use as a boiler house. An adjacent brick smokestack was indicated for Building 202 but it is no longer extant (Figures 7 through 8).

## HISTORY OF PROPERTY

## Central Farm

Building 202, constructed in 1934, is located on the 2,980-acre Central Farm. The largest and oldest of all of BARC's farms, the USDA acquired the Central Farm in stages between 1910 and 1939; most of the buildings and landscape of the Central Farm were developed between 1911 and 1944. The Central Farm is located at the center of BARC and is adjacent to BARC's Linkage Farm to the west, single-family homes along Odell Road to the north, facilities associated with the U.S. Department of Health and Human Services (DHHS) and U.S. Department of State (DOS) to the northeast, the Baltimore-Washington Parkway to the east, and the City of Greenbelt to the south. The Central Farm has approximately 12 clusters of buildings situated on approximately 336 acres (of the 2,980-acre total), as well as pastures, wetlands, and forested areas used for animal husbandry, production crops, animal and plant research, and wildlife management. The USDA's Bureau of Animal Industry (BAI) has historically been the Central Farm's main user (Robinson and Associates 1998).

The USDA acquired the first portion of the Central Farm in 1910 when it purchased 475 acres of the Hall Farm for the Farm Dairy and Animal Husbandry Divisions of the BAI to establish an experimental farm. To accommodate the experimental farm's

## MARYLAND HISTORICAL TRUST REVIEW

Eligibility recommended \_\_\_\_\_ Eligibility not recommended \_\_\_\_\_

Criteria: \_\_\_ A \_\_\_ B \_\_\_ C \_\_\_ D Considerations: \_\_\_ A \_\_\_ B \_\_\_ C \_\_\_ D \_\_\_ E \_\_\_ F \_\_\_ G

## MHT Comments:

\_\_\_\_\_  
Reviewer, Office of Preservation Services

\_\_\_\_\_  
Date

\_\_\_\_\_  
Reviewer, National Register Program

\_\_\_\_\_  
Date

many research tasks during BARC’s early period (i.e., 1910-1933), the USDA constructed laboratories, farm buildings, pastures, and staff housing. In addition, the BAI added laboratories for its Pathology and Zoological Divisions.

In the 1920s, the Bureau of Plant Industry (BPI) began to operate at BARC on approximately 425 acres of leased land that was subsequently purchased with Public Works Administration (PWA) funds in the 1930s, expanding the Central Farm (Wiser and Rasmussen 1966; USDA c. 1937). In 1924, the Farm Dairy and Animal Husbandry Divisions separated into the Bureau of Dairy Industry (BDI) and the BAI. The BDI used 190 acres for continued experiments on dairy cattle breeding, forage crop, silage, and milk research, and the BAI kept 285 acres for its animal research. By 1925, the USDA owned 1,062 acres of the Central Farm and leased about 1,000 more acres (Wiser and Rasmussen 1966). By 1933, four land purchases totaling an additional 1,381 acres further increased the Central Farm’s size (USDA c. 1937, Robinson and Associates 1998).

The majority of the Central Farm was acquired under New Deal policies and funding of the 1930s, when the USDA transformed BARC into a model experiment station. A series of land acquisitions during the 1930s grew BARC to more than 12,000 acres. With this expansion, many of the Bureaus either established, enlarged, or constructed new research facilities on the Central Farm. These included the BAI’s pathology, zoology, and insecticide divisions, the Bureau of Entomology and Plant Quarantine, the Bureau of Human Nutrition and Home Economics, the Bureau of Agricultural Engineering, the Bureau of Cultural and Industrial Chemistry, and the Food and Drug Administration (Robinson and Associates 1998).

The expansion of BARC required major infrastructure improvements that were undertaken with PWA funding and oversight, and Civilian Conservation Corps (CCC) assistance and labor. A CCC camp was established on the north end of the Central Farm in 1933; eventually, four CCC camps were established at BARC, although their exact locations are not known. The CCC workers cleared and drained land, built fences and roads, and constructed small sheds and structures. The overall design of the Central Farm in the 1930s was guided by a master plan that was the work of A.D. Taylor and Delos Smith; H.F. Seahorn of the Public Buildings Administration; Robert T. Walker, CCC landscape architect; and Hugh H. Bennet of the Soil Conservation Service (Robinson and Associates 1998). The Central Farm’s character-defining landscape features include:

- Topographical and anthropogenically altered features, such as major paved roads, minor service and field roads, drainage systems, Beaver Dam Creek, and graded fields;
- Vegetation features, such as field and research crops, pastures, Beltsville Seasonal Ponds, Beltsville Bottomland Forest, and meadows;
- Circulation features, such as Dairy Farm, Powder Mill, Entomology, Research, BioControl, Poultry, and Beaver Dam Roads, as well as secondary and service roads;
- Five main clusters of development, including the 100 Area Cluster (BDI), 200 Area Cluster (BAI - Animal Husbandry and Poultry Research Divisions), 300 Area Cluster (BAI - Parasitological Laboratory of the Zoological Division), 400 Area Cluster (Bureau of Entomology and Plant Quarantine [BEPQ] - Entomology Research Division), and 1000 Area Cluster (Animal Disease Station); and
- Small-scale features, such as fencing, culverts, an amphitheater, and a cemetery (Robinson and Associates 1998).

Bureau of Animal Industry

The USDA’s BAI, the earliest of the USDA’s research bureaus at BARC, came to the Central Farm in 1910 when its Dairy and Animal Husbandry Divisions established an experimental farm within BARC’s initial 475 acres. When the USDA reorganized the Dairy Division into a separate BDI, the BAI retained 285 acres of the Central Farm for its Animal Husbandry Division. During the 1920s, the BAI’s Animal Husbandry Division led the continued development of the site and was the largest section (i.e., in terms

**MARYLAND HISTORICAL TRUST REVIEW**

**Eligibility recommended** \_\_\_\_\_ **Eligibility not recommended** \_\_\_\_\_

**Criteria:** \_\_\_ A \_\_\_ B \_\_\_ C \_\_\_ D **Considerations:** \_\_\_ A \_\_\_ B \_\_\_ C \_\_\_ D \_\_\_ E \_\_\_ F \_\_\_ G

**MHT Comments:**

\_\_\_\_\_  
**Reviewer, Office of Preservation Services**

\_\_\_\_\_  
**Date**

\_\_\_\_\_  
**Reviewer, National Register Program**

\_\_\_\_\_  
**Date**

of both areas occupied and staff) at BARC. The division’s research initially focused on the breeding of all domestic animals, except dairy (Robinson and Associates 1998).

By the early 1930s, the BAI’s Animal Husbandry Division’s needs far exceeded its facilities. To address these needs, the PWA allotted over \$1 million for a major construction program at BARC that included laboratories, an abattoir (slaughterhouse), and animal buildings. These facilities were constructed at BARC with the assistance of CCC workers, with funding and oversight provided by the PWA and the Civil Works Administration. A new Main Laboratory (i.e., Building 200), constructed under this program, was the showpiece of the new animal husbandry area.

As a result of the expansion, by the mid-1930s, the BAI’s Animal Husbandry Division was the largest experimental farm in the country and the center of nation’s research on animal husbandry (Robinson and Associates 1998). In addition to animal husbandry, the BAI transferred other divisions to BARC during the late 1920s and early 1930s using New Deal funding sources at the Central and East Farms. The BAI’s Zoological Division moved its experimental headquarters to, and the BAI’s Animal Disease Station was established at BARC’s Central Farm in 1929 and expanded in 1935 (Robinson and Associates 1998).

In 1953, the USDA undertook a major reorganization and decentralization of the USDA’s agricultural research program that continued through the 1970s (Office of Technology Assessment [OTA] 1981). The decentralization had long-lasting consequences for BARC. The department’s scientific bureaus, including the BAI, were discontinued and the department’s research functions were centralized under the new Agricultural Research Administration (now the ARS) (OTA 1981). The USDA again reorganized in 1972 with administrative decentralization as its goal (OTA 1981). Through this process, operating responsibility was delegated to four regions, which were then subdivided into research area centers. BARC’s scientists and facilities thus became a regional research facility, rather than a national one (OTA 1981). By 1980, the USDA’s research program was highly decentralized, with research undertaken at 148 locations, including the much diminished 450-scientist facility at BARC (OTA 1981).

Over the years, the BAI’s researchers conducted important research at BARC that has led to major improvements in eradicating and treating contagious diseases in farm animals, reducing parasite infestations, and improving nutrition. The BAI’s Animal Husbandry Division undertook critical poultry and swine research that improved the size and health of the farm animals. The BAI’s Zoology Division’s parasite research brought innovative new approaches to treating infestations. The BAI’s Animal Disease Station developed vaccines to prevent Bang’s disease and developed sterilization methods for contaminated hides (Robinson and Associates 1998).

History of the Boiler House, Building 202

The Boiler House (Building 202) was completed by the Bureau of Animal Industry of the Department of Agriculture at a total cost of \$1,712,270. The project also included the main laboratory building, small animal building, water system, power lines, bridges, and some minor buildings. The boiler house is a single story with mezzanine and features three rooms which are used for boilers, machinery, and the transformers (USDA 1934, The Living New Deal n.d.).

Original design drawings, dated July 1934, exists for Building 202 (Figures 7 through 8). They were drawn by the USDA Bureau of Agricultural Engineering, Division of Plans and Service. The timeline and construction methodology for Building 202 is consistent with the New Deal development of BARC, prioritizing simple utilitarian design elements with Georgian Revival-style characteristics including symmetry, concrete, stone and brick construction, and balancing fireproof materials and construction techniques with the buildings’ individual designs and programs. The construction and design elements of Building 202 were

<b>MARYLAND HISTORICAL TRUST REVIEW</b>	
<b>Eligibility recommended</b> _____	<b>Eligibility not recommended</b> _____
<b>Criteria:</b> ___ A    ___ B    ___ C    ___ D	<b>Considerations:</b> ___ A    ___ B    ___ C    ___ D    ___ E    ___ F    ___ G
<b>MHT Comments:</b>	
_____	_____
<b>Reviewer, Office of Preservation Services</b>	<b>Date</b>
_____	_____
<b>Reviewer, National Register Program</b>	<b>Date</b>

conscious and informed decisions by the architects for the purposes of aesthetic consistency as well as the promotion of fire safety (Robinson and Associates 1998).

NATIOANL REGISTER OF HISTORIC PLACES EVALUATION

Building 202 was evaluated in 1997 to determine the building’s individual significance or status as a contributing or non-contributing property at BARC, a 6,582-acre federal agricultural research facility. BARC was determined eligible in its entirety for listing in the National Register of Historic Places (NRHP) as the largest national research facility for the USDA and for its role as the most diversified agricultural research complex in the world. That evaluation determined Building 202 to be eligible for listing in the NRHP as a contributing property within BARC. This evaluation concurs that while Building 202 is not individually significant, it contributes to the overall significance of BARC. The history and development of the agricultural research facility also reflects New Deal policies and programs, and contains notable landscape architecture, Georgian Revival architecture, and experimental agricultural architecture. The criteria applied to evaluate properties for the NRHP are presented below.

Under Criterion A, Building 202 is a contributing property within BARC, which is significant at the national level for its association with events that have made significant contributions to the broad pattern of our history with agricultural experimentation. Many aspects of twentieth century living for the farmer and consumer were influenced by the scientific research conducted at BARC. BARC is a prominent example of the federal role in agricultural research, scientific agricultural research in general, and New Deal policies and programs, such as the 1930s agricultural policies and funding, the PWA, and the CCC, which all played important roles in shaping the experimental farm. BARC’s scientists and researchers have made major contributions toward scientific knowledge that have resulted in incredible advances in crop production, plant and animal disease control, and pest control. Building 202 was specifically designed and operated as a boiler house within the BAI’s 200 Area Cluster – Animal Husbandry Division. BARC scientists and researchers made valuable scientific contributions, both in foundational and applicable science.

BARC and Building 202 have not been determined significant under Criterion B for its association with the lives of persons significant in our past.

Under Criterion C, Building 202 is a contributing property within BARC, as it embodies the distinctive characteristics of a type, period, or method of construction. The physical appearance of BARC was strongly influenced in the 1930s by the planning team of A.D. Taylor, landscape architect, and Delos Smith, architect. The majority of BARC’s buildings share a Georgian Revival style and/or display the characteristics of experimental agricultural architecture. BARC’s landscape includes major paved roads, minor service roads, field and research crops, pasture lands, seasonal ponds, forests, sustainable meadows, and other landscape features and buildings. Building 202, while relatively modest in design, represents an example of the experimental and purpose-driven agricultural architecture trends for which BARC is significant, and contributes to the overall landscape.

Neither BARC nor Building 202 specifically has been evaluated under Criterion D for its yielding, or likelihood to yield, information important in prehistory or history.

Building 202 retains its original location and setting within an agricultural research complex. Building 202 is specifically linked in its design and operation as a boiler house and its ties to the BAI’s 200 Area Cluster (Animal Husbandry Division) research buildings. The feeling of, and association with, an agricultural research center is intact. Building 202 maintains key elements of its original design including massing, fenestration, cladding, and internal layouts, despite the fire damage caused in 2016. Building 202 retains its integrity of design, workmanship, and materials. Building 202 is in poor condition.

MARYLAND HISTORICAL TRUST REVIEW

Eligibility recommended \_\_\_\_\_ Eligibility not recommended \_\_\_\_\_

Criteria: \_\_\_ A \_\_\_ B \_\_\_ C \_\_\_ D Considerations: \_\_\_ A \_\_\_ B \_\_\_ C \_\_\_ D \_\_\_ E \_\_\_ F \_\_\_ G

MHT Comments:

\_\_\_\_\_  
Reviewer, Office of Preservation Services

\_\_\_\_\_  
Date

\_\_\_\_\_  
Reviewer, National Register Program

\_\_\_\_\_  
Date

Although Building 202 does not reach the level of significance necessary for individual listing on the NRHP, it maintains its significance within BARC under Criteria A and C.

REFERENCES

The Living New Deal

n.d. "HENRY A. WALLACE BELTSVILLE AGRICULTURAL RESEARCH CENTER - BELTSVILLE MD."  
<https://livingnewdeal.org/projects/henry-a-wallace-beltsville-agricultural-research-center-beltsville-md/> (accessed June 2020).

Office of Technology Assessment (OTA), U.S. Food and Agricultural Research Advisory Panel  
 1981 An Assessment of the United States Food and Agricultural Research System. Washington, D.C.: U.S. Government Printing Office.

<https://books.google.com/books?id=0Muy9v0PQckC&lpg=PA29&dq=The%20Role%20and%20Development%20of%20Public%20Agricultural%20Research&pg=PA29#v=onepage&q&f=false> (accessed June 2020).

Robinson and Associates

1998 Historic Site Survey, Beltsville Agricultural Research Center, Beltsville, Maryland. On file at the Maryland Historical Trust.

United States Department of Agriculture (USDA)

1934 Boiler House, F.P. 72, Beltsville, MD. Bureau of Agricultural Engineering, Division of Plans and Service. On file, Architectural Drawings Collection, Facilities and Engineering Branch, Building 261, BARC.

c. 1937 The National Agricultural Research Center of the Department of Agriculture. USDA Library, Special Collections 360.

Wiser, Vivian and Wayne D. Rasmussen

1966 "Background for Plenty: A National Center for Agricultural Research." Maryland Historical Magazine 61:4, December 1966.

**MARYLAND HISTORICAL TRUST REVIEW**

Eligibility recommended \_\_\_\_\_ Eligibility not recommended \_\_\_\_\_

Criteria: \_\_\_ A \_\_\_ B \_\_\_ C \_\_\_ D Considerations: \_\_\_ A \_\_\_ B \_\_\_ C \_\_\_ D \_\_\_ E \_\_\_ F \_\_\_ G








MHT Comments:

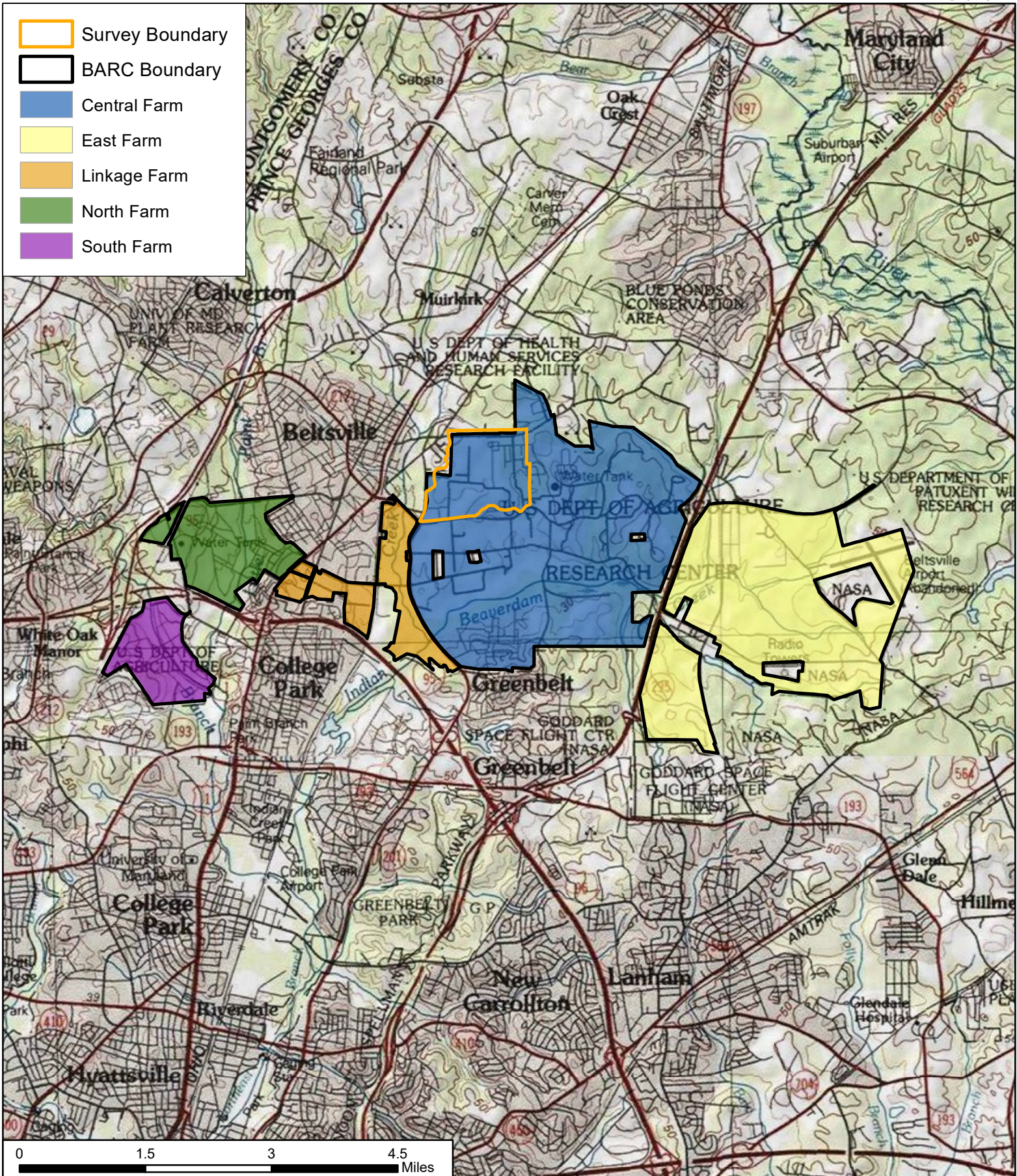
\_\_\_\_\_  
 Reviewer, Office of Preservation Services

\_\_\_\_\_  
 Date

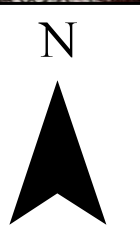
\_\_\_\_\_  
 Reviewer, National Register Program


\_\_\_\_\_  
 Date

-  Survey Boundary
-  BARC Boundary
-  Central Farm
-  East Farm
-  Linkage Farm
-  North Farm
-  South Farm










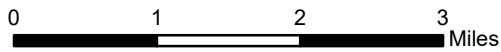
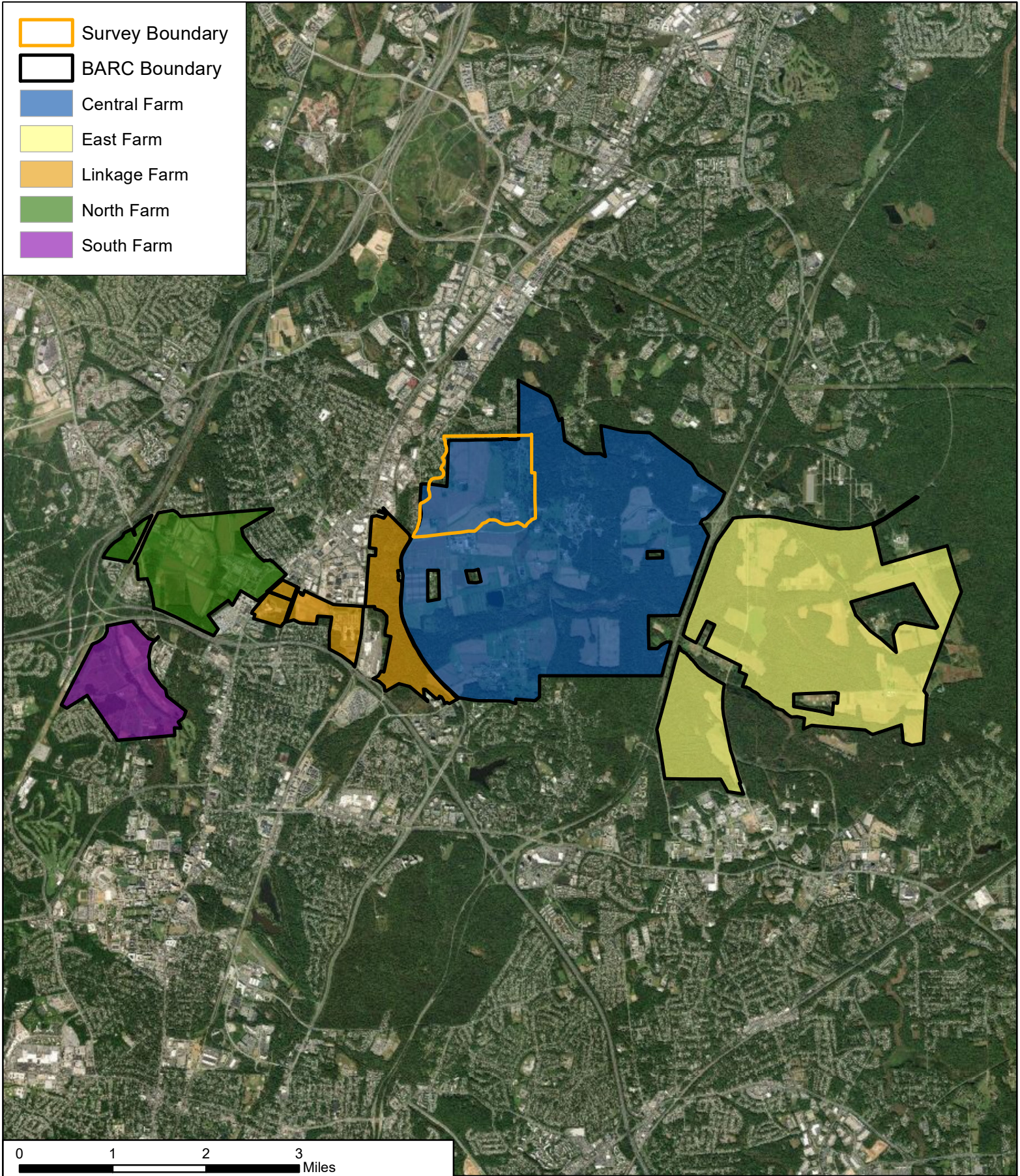
CLIENT	USACE - Baltimore District
PROJ	Bureau of Engraving and Printing EIS
SCALE	1:85,000
SOURCE	USGS 7.5' Beltsville, MD Quad, 1979
<small>\\URSGermantown.us.ie.urs\Germantown\Projects\ENVI\AP\CRM\USDA - BARC CRM study, Phase 1\900-GIS and Graphics\920 GIS\ArchHist\Fig1B264</small>	



TITLE	Beltsville Agricultural Research Center Overview Map Building 202 - Boiler House (PG:62-81)	
	PROJ NO	60613151
	FIGURE	1



-  Survey Boundary
-  BARC Boundary
-  Central Farm
-  East Farm
-  Linkage Farm
-  North Farm
-  South Farm



CLIENT	USACE - Baltimore District
PROJ	Bureau of Engraving and Printing EIS
SCALE	1:85,000
SOURCE	ESRI 2019

\\URSGermantown.us.ie.urs\Germantown\Projects\ENVI\AP\CRM\USDA - BARC CRM study, Phase 1\900-GIS and Graphics\920 GIS\ArchHist\Fig1B264







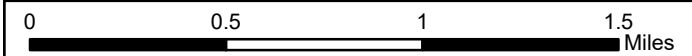
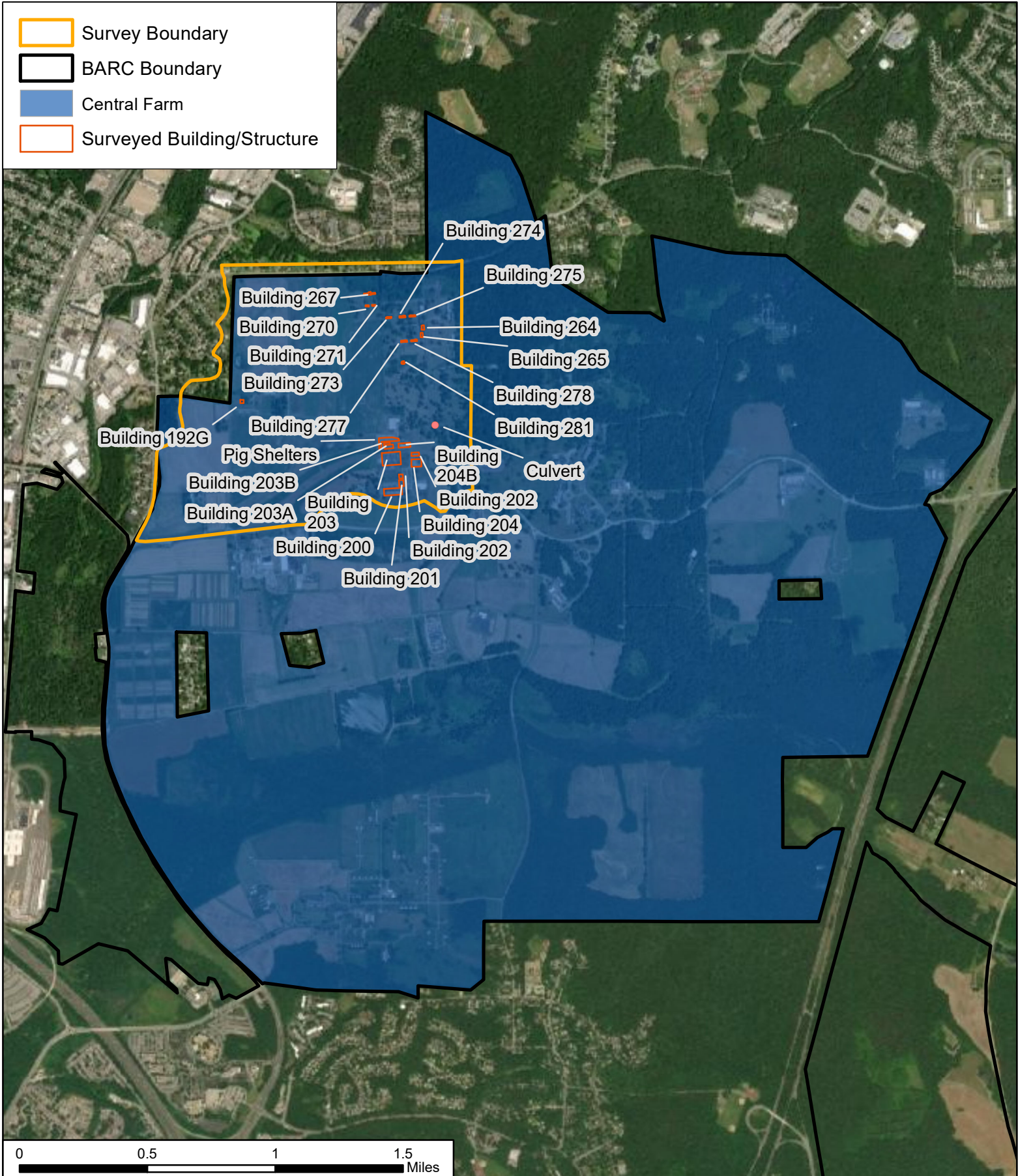
TITLE Beltsville Agricultural Research Center Overview  
Map Building 202 - Boiler House (PG:62-81)

**AECOM**  
12420 Milestone Center Dr.  
Germantown, MD 20876

PROJ NO 60613151

FIGURE 2

-  Survey Boundary
-  BARC Boundary
-  Central Farm
-  Surveyed Building/Structure




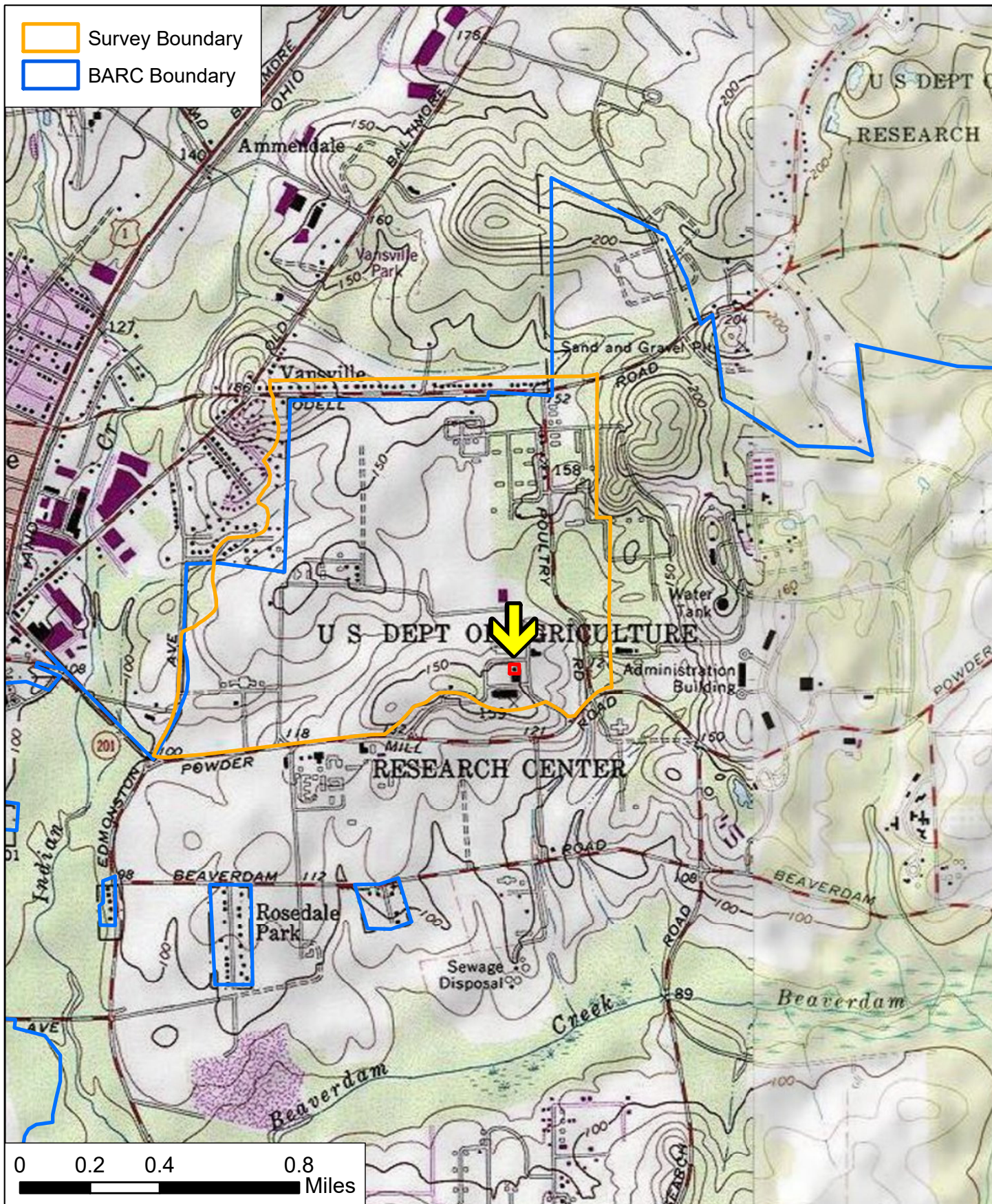
CLIENT	USACE - Baltimore District
PROJ	Bureau of Engraving and Printing EIS
SCALE	1:31,000
SOURCE	ESRI 2019

\\URSGermantown.us.ie.urs\Germantown\Projects\ENVI\AP\CRM\USDA - BARC CRM study, Phase 1\900-GIS and Graphics\920 GIS\ArchHist\Fig1B264



TITLE	Beltsville Agricultural Research Center Central Farm Building 202 - Boiler House (PG:62-81)
-------	---

 12420 Milestone Center Dr. Germantown, MD 20876	PROJ NO	60613151
	FIGURE	3



CLIENT	USACE - Baltimore District
PROJ	Bureau of Engraving and Printing EIS
SCALE	1:24,000
SOURCE	USGS 7.5' Beltsville, MD Quad, 1979
Q:\Projects\ENVI\APICRM\USACE Baltimore District\Bureau of Engraving & Printing, EIS, at USDA BARC\900-GIS and Graphics\920	




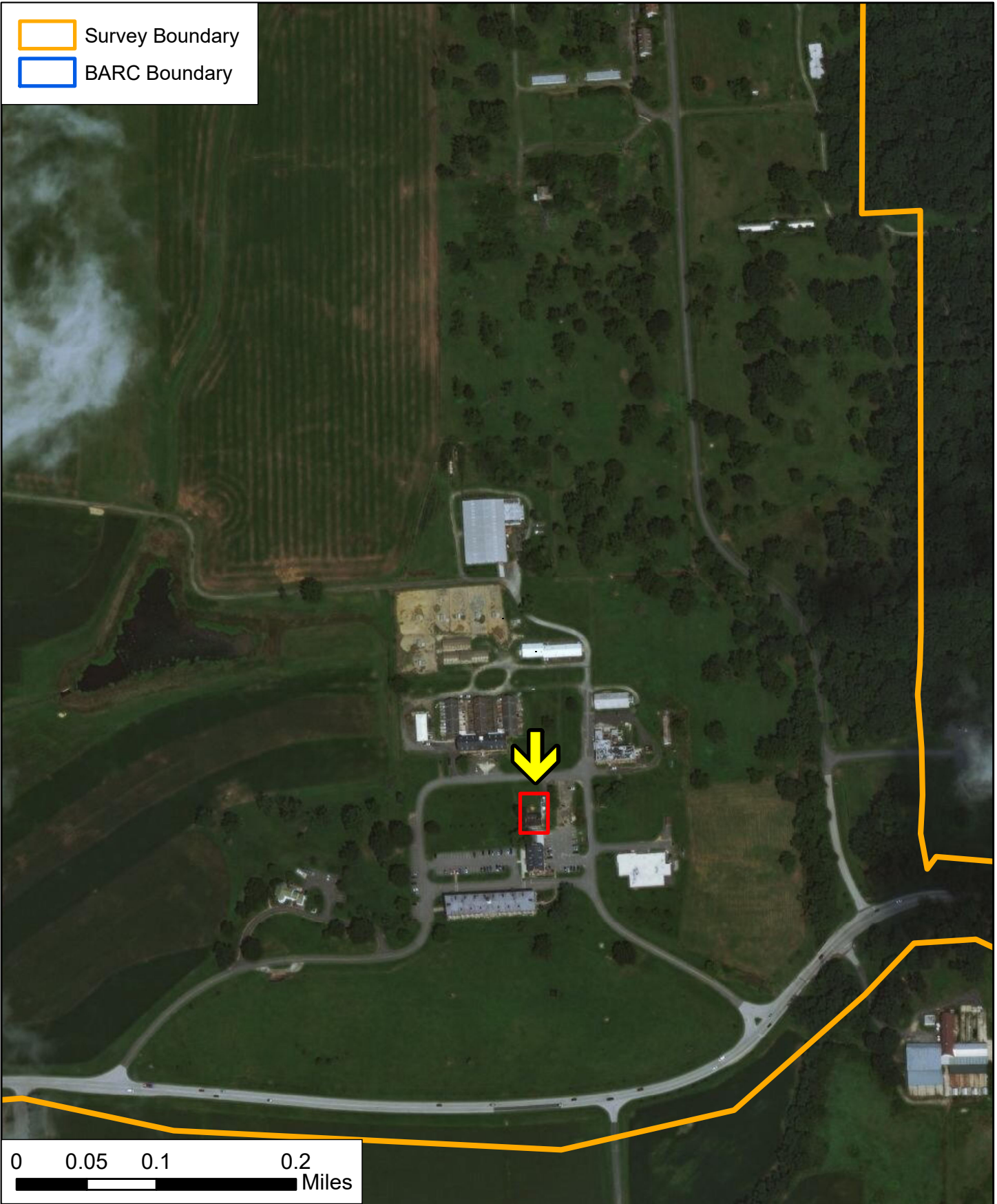
TITLE	Beltsville Agricultural Research Center Building 202 - Boiler House (PG:62-81)	
<b>AECOM</b>	12420 Milestone Center Dr.	PROJ NO 60613151
		FIGURE 4



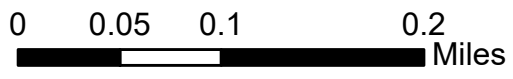
CLIENT	USACE - Baltimore District
PROJ	Bureau of Engraving and Printing EIS
SCALE	1:6,000
SOURCE	USGS 7.5' Beltsville, MD Quad, 1979
Q:\Projects\ENVI\AP\CRM\USACE Baltimore District\Bureau of Engraving & Printing, EIS, at USDA BARC\900-GIS and Graphics\920	



TITLE	Beltsville Agricultural Research Center Building 202 - Boiler House (PG:62-81)	
 12420 Milestone Center Dr. Germantown, MD 20876	PROJ NO	60613151
	FIGURE	5




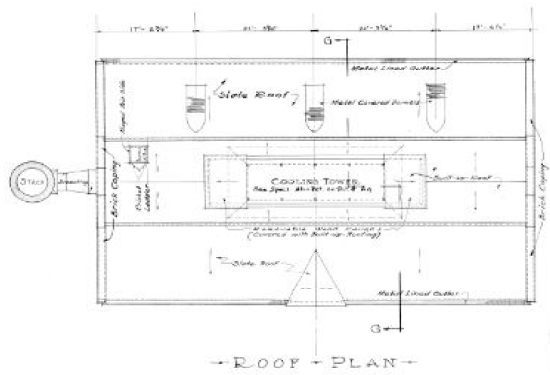
Survey Boundary  
 BARC Boundary



CLIENT	USACE - Baltimore District
PROJ	Bureau of Engraving and Printing EIS
SCALE	1:6,000
SOURCE	ESRI DigitalGlobe Imagery
Q:\Projects\ENVI\AP\CRM\USACE Baltimore District\Bureau of Engraving & Printing, EIS, at USDA BARC\900-GIS and Graphics\920	



TITLE	Beltsville Agricultural Research Center Building 202 - Boiler House (PG:62-81)	
 12420 Milestone Center Dr. Germantown, MD 20876	PROJ NO	60613151
	FIGURE	6



**GENERAL NOTES:**  
 All Partitions to be of Materials as indicated on Drawings and shall be finished with Waterproof Cement Paint.  
 All Walls throughout building of Main Floor and Mezzanine Floor shall have "C" Cement Base, except interior wall of Plenum Chamber and Storage Space.  
 All Doors, Windows etc. are to be of size and design as shown on schedules and on Details.  
 Door Sills, Sills etc. are minimum exclusive of moldings.  
 Door Types are indicated by a number thus:  
 - 1 - letter - I  
 - double letters thus 22  
 All telescopic doors to be 1 1/2" thick.  
 - Letter and Size to be 1 1/2" thick, in. Kamin doors 1 1/2" thick.  
 Door Symbol thus O indicates upper Panel to be clear glass.  
 Door Symbol thus O indicates Closure Glass in upper Panel.  
 Panel.  
 The Suspended Ceiling over Office and Plenum Chamber to be Cement Plaster on Metal Lath 8 facing ceiling.  
 All Telescopic Doors marked (S) to be Kamin type and have clear wire glass in upper Panel.  
 Door (S) between Office and Plenum Chamber to be weatherstripped and have standard bronze interlocking type Threshold.  
 Window (S) in Plenum Chamber to be weatherstripped.  
 Door (S) to be weatherstripped and provided with C.I. interlocking type threshold.  
 Main Floor to be separated from all Exterior walls by 1/2" mastic joint.

**DOOR SCHEDULES**

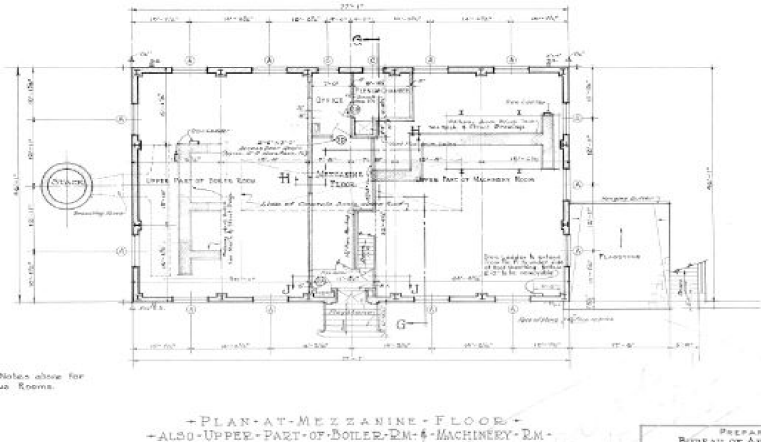
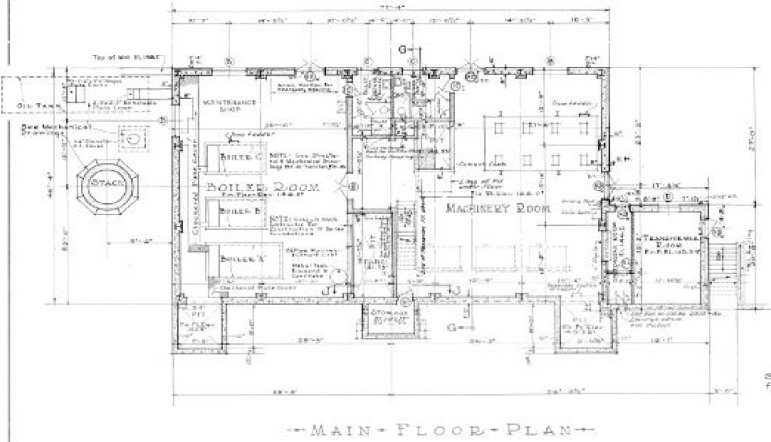
TYPE	1	2	3	4	5
MARK	G	Y	M	B	O
SIZE	6'-0" x 7'-0"	6'-0" x 7'-0"	6'-0" x 7'-0"	6'-0" x 7'-0"	6'-0" x 7'-0"

**LEGEND OF MATERIALS & KEY TO ABBREVIATIONS**

Concrete	Stone
Brick	Concrete
Plaster	Brick
Hollow Tile	Plaster
Wood	Hollow Tile
Wood	Wood

**WINDOW SCHEDULE**

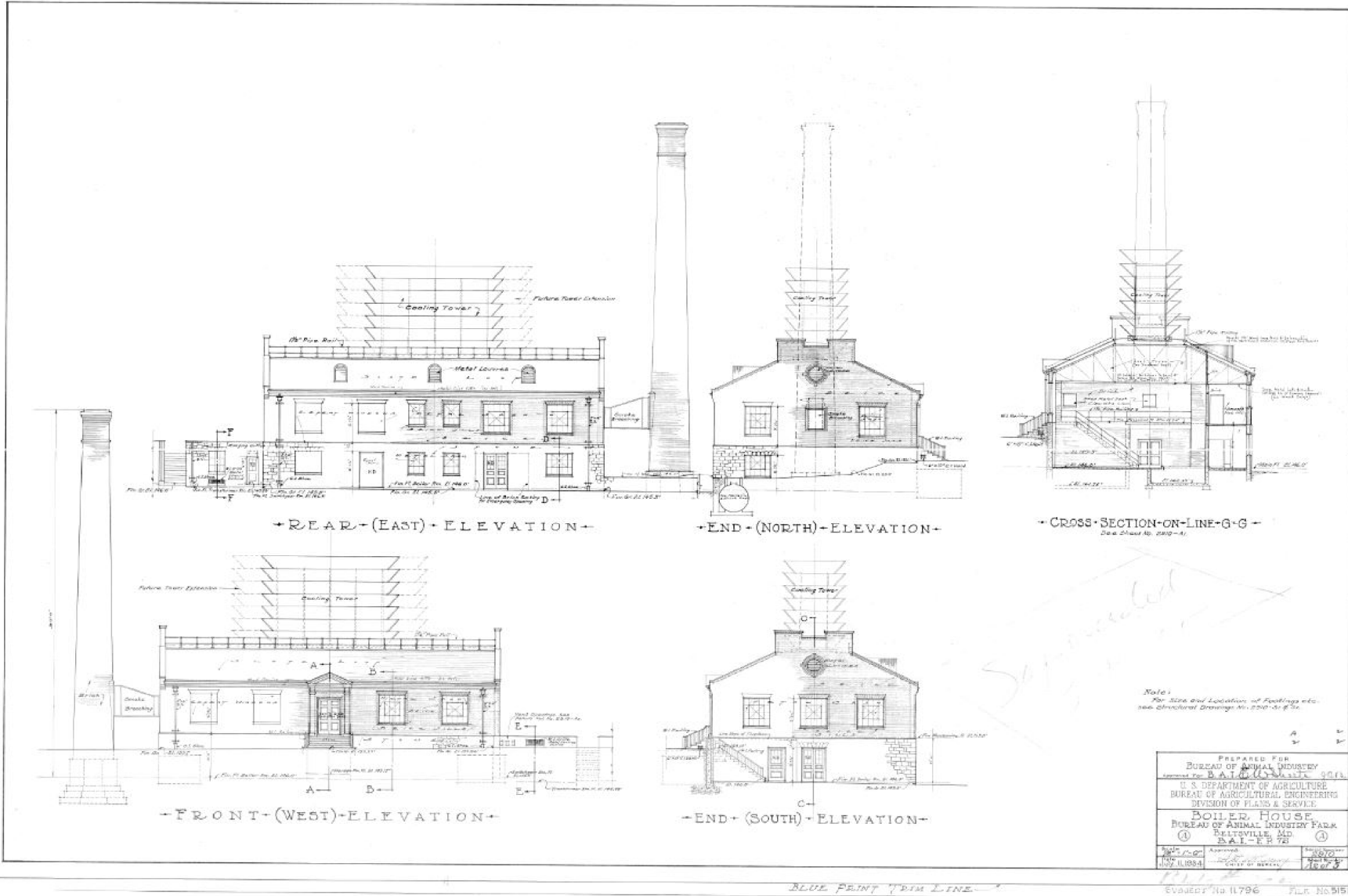
TYPE	1	2	3	4
MARK	A	B	C	D
SIZE	6'-0" x 7'-0"	6'-0" x 7'-0"	6'-0" x 7'-0"	6'-0" x 7'-0"
REMARKS				Stationary



PREPARED FOR  
 BUREAU OF ANIMAL INDUSTRY  
 U. S. DEPARTMENT OF AGRICULTURE  
 BUREAU OF AGRICULTURAL ENGINEERING  
 DIVISION OF PLANS & SPECIFICATIONS  
 BOILER HOUSE  
 BUREAU OF ANIMAL INDUSTRY FARM  
 BELTSVILLE, MD.  
 July 11, 1934  
 SUBJECT No. H 796 File No. 5151

CLIENT	USACE - Baltimore District
PROJ	Bureau of Engraving and Printing EIS
SCALE	
SOURCE	AECOM
Q:\Projects\ENVI\AP\CRM\USACE Baltimore District\Bureau of Engraving & Printing, EIS, at USDA BARC\400-Technical\430 Reports\432 Draft Deliverables\DOEs\Building	

TITLE	Historic Drawing: Main Floor and Mezzanine Floor Plans
PROJ NO	
FIGURE	



PREPARED FOR  
 BUREAU OF ANIMAL INDUSTRY  
 Approved by B.A.I.C. (U.S. No. 1111) 1911  
 U.S. DEPARTMENT OF AGRICULTURE  
 BUREAU OF AGRICULTURAL ENGINEERING  
 DIVISION OF PLANS & SERVICE  
 BOILER HOUSE  
 BUREAU OF ANIMAL INDUSTRY FARM  
 BELTSVILLE, MD.  
 B.A.I. P. 12

Note:  
 For Size and Location of Footings etc.  
 see Structural Drawings No. 2507-2512

BLUE PRINT TRIM LINE

Evangelist No. 11796 P.L.R. No. 5151

CLIENT	USACE - Baltimore District
PROJ	Bureau of Engraving and Printing EIS
SCALE	
SOURCE	AECOM
Q:\Projects\ENVI\AP\CRM\USACE Baltimore District\Bureau of Engraving & Printing, EIS, at USDA BARC\400-Technical\430 Reports\432 Draft Deliverables\DOEs\Building	

TITLE	Historic Drawing: North, East, West, and South Elevations	
	Beltsville Agricultural Research Center (BARC), Boiler House, Building 202	PROJ NO
		FIGURE
		8

**USDA**

**Bureau of Engraving and Printing EIS**

**Building 202: Boiler House**

**10300 Baltimore Avenue, Central Farm**

**Prince George's County, MD**

**Photographer: Christina Sabol, Architectural Historian**

**June 2, 2020**

**MD SHPO**

*Archival Black and White Photographs and Digital Photographs for the Maryland Historical Trust.*

1. PG:62-81\_2020\_06\_02\_01.tif, Building 202, Boiler House, Central Farm, View of Southeast Oblique, Looking Northwest
2. PG:62-81\_2020\_06\_02\_02.tif, Building 202, Boiler House, Central Farm, View of Southwest Oblique, Looking Northeast
3. PG:62-81\_2020\_06\_02\_03.tif, Building 202, Boiler House, Central Farm, View of Northwest Oblique, Looking Southeast
4. PG:62-81\_2020\_06\_02\_04.tif, Building 202, Boiler House, Central Farm, View of North Elevation, Looking South





Photo 1 - Building 202, Boiler House, Central Farm, View of Southeast Oblique, Looking Northwest



Photo 2 - Building 202, Boiler House, Central Farm, View of Southwest Oblique, Looking Northeast



CLIENT	USACE - Baltimore District	TITLE	Building 202: Boiler House Property Photographs
PROJ	Bureau of Engraving and Printing EIS	 12420 Milestone Center Dr. Germantown, MD 20876	PROJ NO 60485181
SCALE	-		FIGURE
SOURCE	AECOM	Q:\Projects\ENVI\APICRM\USACE Baltimore District\ Bureau of Engraving & Printing, EIS, at USDA BARC\400-Technical\430 Reports\ 432 Draft Deliverables\DOEs\Building 202\Photos	



Photo 3 - Building 202, Boiler House, Central Farm, View of Northwest Oblique, Looking Southeast



Photo 4 - Building 202, Boiler House, Central Farm, View of North Elevation, Looking South

CLIENT	USACE - Baltimore District	TITLE Building 202: Boiler House Property Photographs	 12420 Milestone Center Dr. Germantown, MD 20876	
PROJ	Bureau of Engraving and Printing EIS			PROJ NO 60485181
SCALE	-			FIGURE
SOURCE	AECOM			
Q:\Projects\ENVI\AP\CRM\USACE Baltimore District\Bureau of Engraving & Printing, EIS, at USDA BARC\400-Technical\430 Reports\432 Draft Deliverables\DOEs\Building 202\Photos				