

SOUTHEAST REGION FEDERAL CONSTRUCTION, INFRASTRUCTURE & ENVIRONMENTAL SUMMIT

Tamika Gray
Deputy for Small Business

Paula Beck
Chief of Contracting

Baltimore District
Date: 28 OCT 2021



US Army Corps
of Engineers®

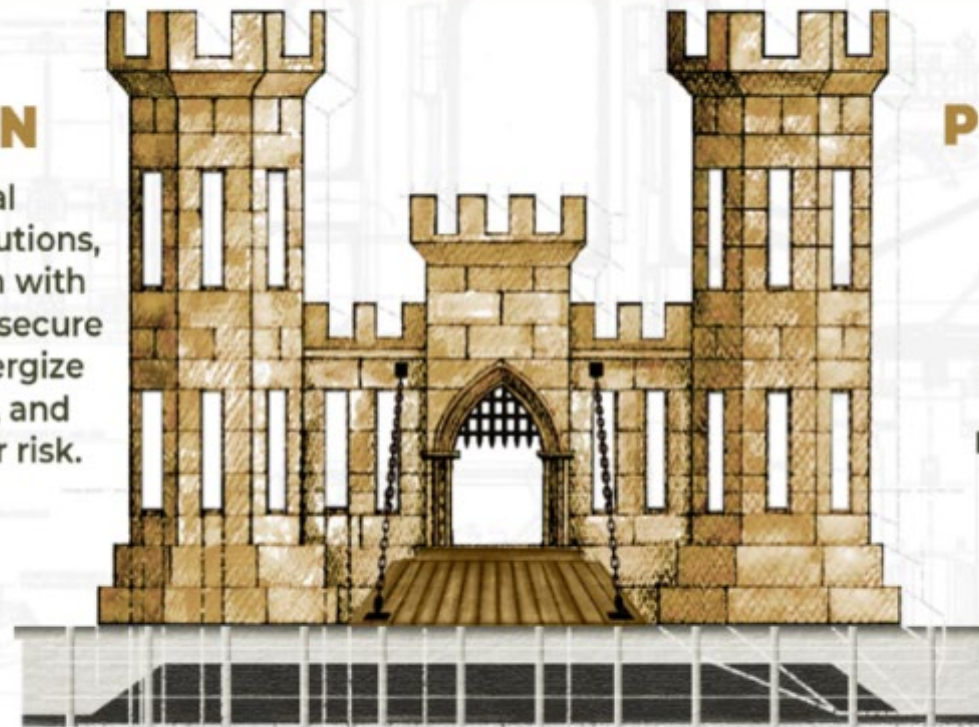
U.S. ARMY CORPS OF ENGINEERS

MISSION

Deliver vital engineering solutions, in collaboration with our partners, to secure our Nation, energize our economy, and reduce disaster risk.

PRIORITIES

PEOPLE
READINESS
PARTNERSHIPS
REVOLUTIONIZE



ENGINEERING SOLUTIONS FOR THE NATION'S TOUGHEST CHALLENGES



AN OVERVIEW: BALTIMORE DISTRICT



Overview

- A full-service district serving 6 states and the District of Columbia in the mid-Atlantic and **National Capital Region**
- Provides primary support to 14 military installations
- Manages water resources in the Susquehanna and Potomac watersheds and upper Chesapeake Bay
- Provides all drinking water to our Nation's capital
- Executes regional and national programs for USACE

The Numbers

- **1,100** civilian employees
- **\$1.7B** expenditures per year
- **290** miles of federal channels
- **16** reservoir projects
- **11** recreational projects
- **15 million+** visitor hours per year
- **600** acres of oyster habitat restored
- **\$16B** in flood damages prevented to date

Support to our Military

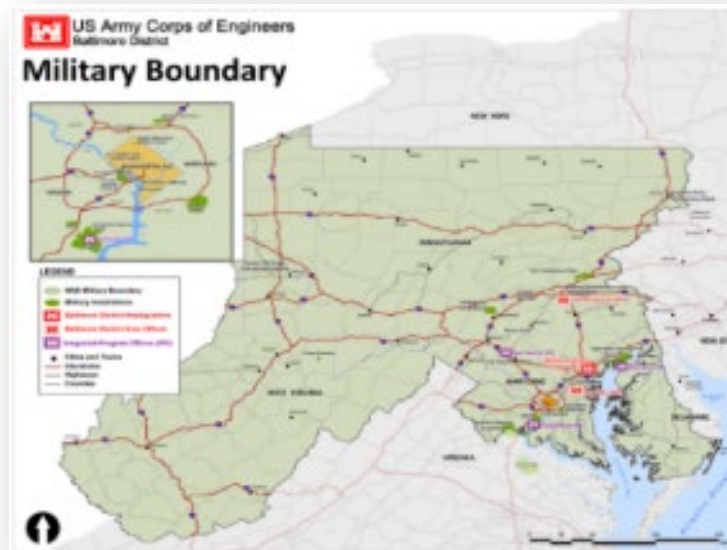


COL Estee Pinchasin,
Commander

Support to the Public

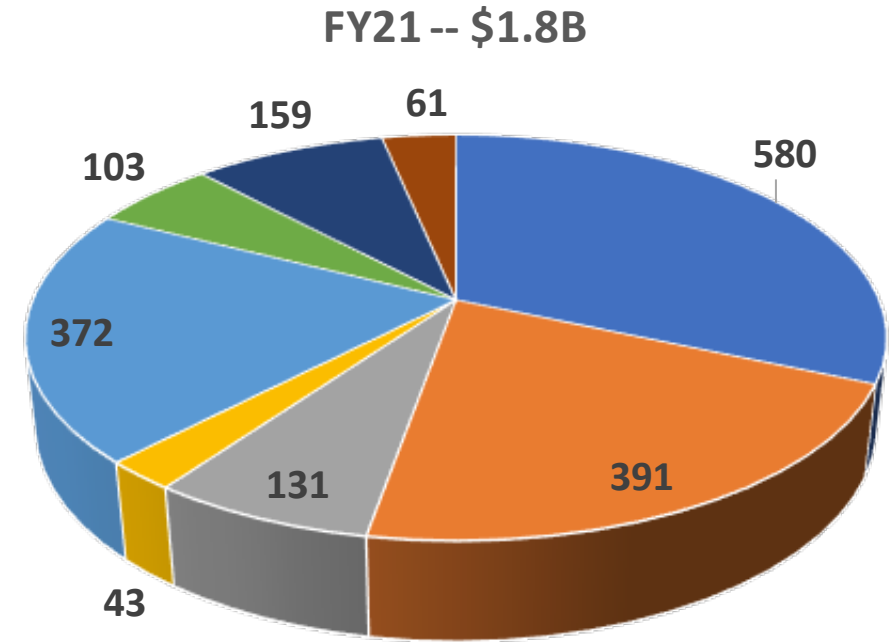
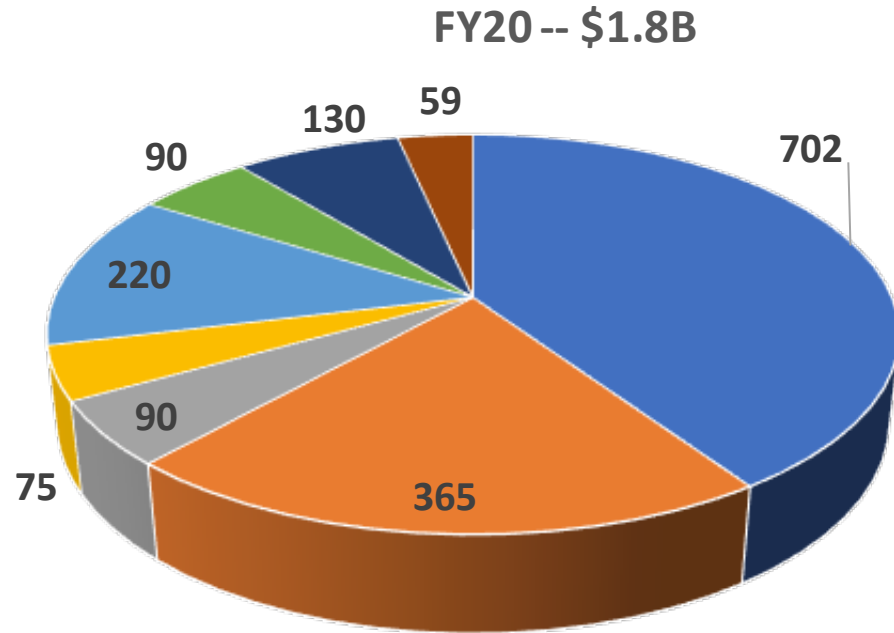
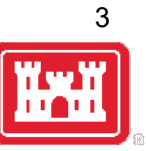
District Capabilities

- Engineering, Design, and Construction
- Environmental Services
- Dredging Federal Channels
- Dam/Levee Operations & Maintenance
- Disaster Response & Recovery
- Value Engineering
- **Real Estate Services**
- **Hurricane Modeling**
- **Military Munitions Response**
- **Radiological Center of Expertise**





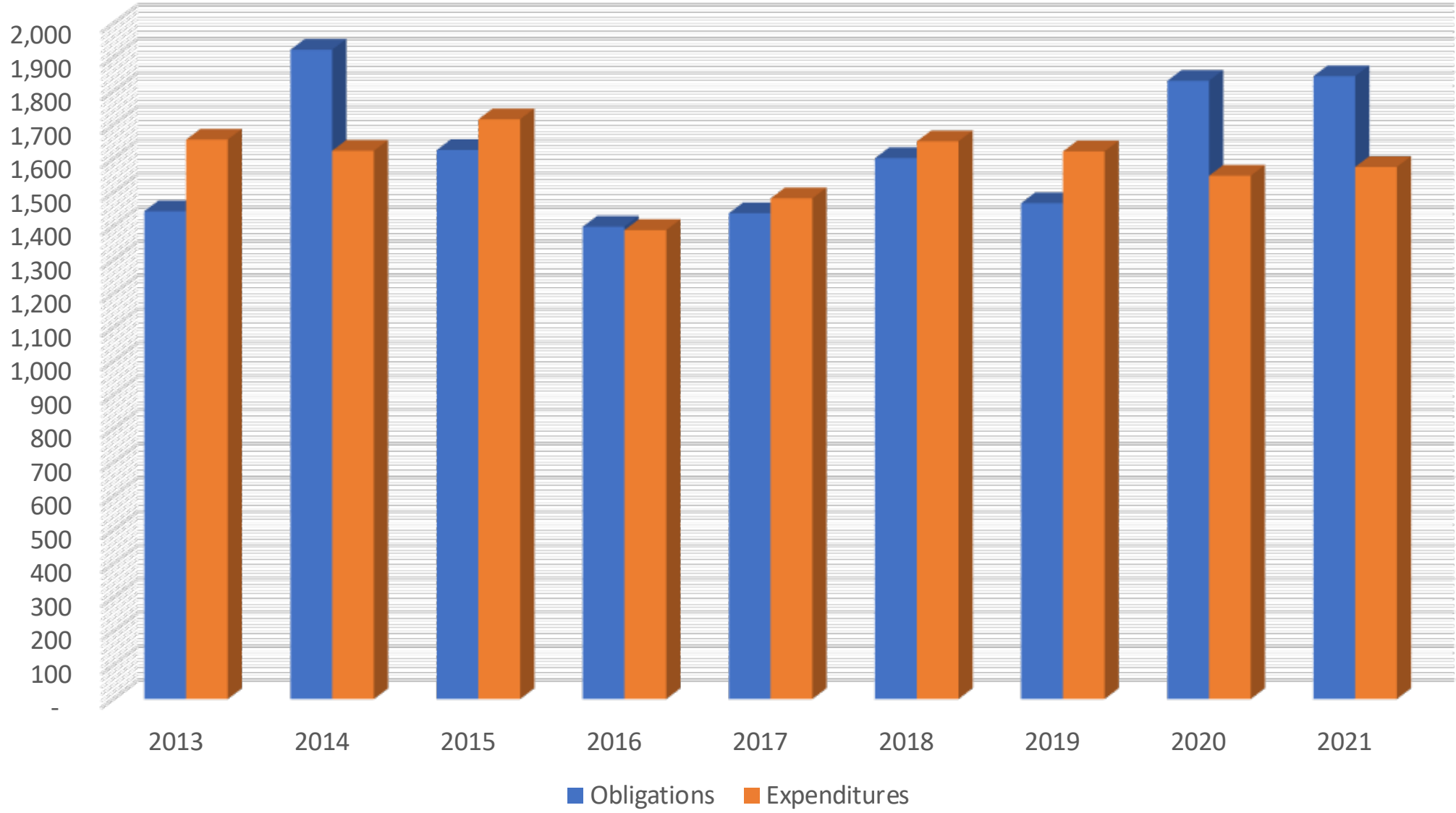
Baltimore District Total Obligations (\$millions) FY2020 and FY2021



- Military Construction (MILCON)
- Military Programs (Leases)
- Civil Works
- IIS & Support to Other Districts
- Military Programs (SRM)
- Other Secure Programs
- Environmental
- Washington Aqueduct



Baltimore District - Obligations and Expenditures by Fiscal Year (\$millions)





DISTRICT TRENDS – MORE WORK, MORE UNCERTAINTY ON TOP OF STEADY PROGRAMS



Interagency Reimbursable Work:

- Bureau of Engraving and Printing
- Customs and Border Patrol
- Veterans Administration
- Architect of the Capitol
- Department of Homeland Security
- Department of Agriculture

Washington Aqueduct:

- Facilities Master Planning / Asset Management
- Capital Improvement Program Growth

Civil Works:

- Mid-Bay Island
- American Jobs Act Infrastructure

Military:

- Secure Campus, FT Belvoir

Military:

- NSA East Campus Program
- Army MILCON
- Large SRM Program
- Secure Leasing

Environmental:

- Reactor Decommissioning – SM1A
- PFAS

Civil Works

- Operations & Maintenance

Washington Aqueduct:

- Operations & Maintenance



OPPORTUNITIES



IDIQS IN PLANNING / PRE-SOLICITATION

| CAPACITY | DESCRIPTION | PROJECTED AWARD |
|----------------------|-------------------------------|-----------------|
| Construction | | |
| \$20M | D/B SATOC Navy 8(A) | Q2 22 |
| \$30M | DC SATOC | Q2 22 |
| \$450M | D/B MATOC District-Wide CONUS | Q3 22 |
| \$100M | D/B SATOC Raven Rock | Q3 22 |
| \$50M | IC NCR SATOC | Q4 22 |
| \$100M | Secure SATOC | Q4 22 |
| A/E | | |
| \$25M | WA SATOC | Q2 22 |
| \$150M | HTRW MATOC | Q4 22 |
| Environmental | | |
| \$240M | Env Svcs MATOC MAES | Q3 23 |



Potential Opportunities Design-Build and Services Fiscal Year 2022

| Approx. Value | Description | Location | Strategy | Planned Awd |
|---------------|---|--------------|----------|-------------|
| 500-700M | East Campus Building #4 (ECB4) | FT Meade | DB | Q2 |
| 200-300M | Records Center Replacement and Mercury Flora | FT Meade | DB | Q2 |
| 50-100M | Fort Detrick USDA-Foreign Disease Weed Science Research Lab | FT Detrick | DB | Q2 |
| 20-30M | MARFORCYBER Bldg 8605 Renovation | FT Meade | DB | Q2 |
| 15-25M | Beltsville, Building 002, USDA-ARS | Maryland | DB | Q2 |
| 5-10M | DLA HQ Elevator Modernization | FT Belvoir | DB | Q2 |
| 30-50M | Beltsville, Building 308, USDA-ARS | Maryland | DB | Q3 |
| 5-10M | Force Protection Perimeter Enhancements | Pennsylvania | DB | Q3 |
| 20-40M | Veterinarian Center | FT Belvoir | DB | Q4 |
| 20-40M | Repair Steam Sterilization Plant | FT Detrick | DB | Q4 |
| 5-10M | AFCEC Fence to Fence Environmental Compl | North East | SVC | Q2 |
| 1-5M | DLA HQs Environmental Program Support | FT Belvoir | SVC | Q2 |
| 100-200M | SM-1A Decommissioning Implementation | Alaska | SVC | Q4 |
| 5-10M | WR Grace Curtis Bay Works | Maryland | SVC | Q4 |
| 1-5M | DSC Richmond | Virginia | SVC | Q4 |



Potential Opportunities Design-Bid-Build Fiscal Year 2022

| Approx. Value | Description | Location | Strategy | Planned Awd |
|---------------|--|--------------|----------|-------------|
| 20-40M | FY21 Baltimore Harbor (Harbor & MD Approach) | Maryland | DBB | Q1 |
| 5-10M | JBA, F-16 Mission Training Center | JBA | DBB | Q1 |
| 5-10M | Interior Renovation of Building 62 | Maryland | DBB | Q1 |
| 5-10M | O&M Fishing Creek | Pennsylvania | DBB | Q1 |
| 5-10M | JBA, Munitions Load Crew Training Facility | JBA | DBB | Q1 |
| 1-5M | Dyke Marsh Environmental Restoration Project | Virginia | DBB | Q1 |
| 1-5M | BARC Wildlife Office | Maryland | DBB | Q1 |
| 1-5M | DLA Overwatch Booths & Dining Patio Pavers | Pennsylvania | DBB | Q1 |
| 5-10M | DLA Site Improvement | FT Meade | DBB | Q2 |
| 50-100M | Enlisted Unaccompanied Personnel Housing | FT Meade | DBB | Q3 |
| 50-100M | INSCOM HQ's Building | FT Belvior | DBB | Q3 |
| 20-40M | LEAD, Repairs to Bldg. 370 | Pennsylvania | DBB | Q3 |
| 5-10M | B6330 Gaffney Fitness Center Renovation | FT Meade | DBB | Q3 |
| 5-10M | 2nd High Reservoir Maintenance and Improvements | D.C. | DBB | Q3 |
| 50-100M | SOF Operations Building | FT Meade | DBB | Q4 |
| 20-40M | Night Vision Lab Bldg. 357 - Construction Repair | FT Belvior | DBB | Q4 |
| 1-5M | SOF Tactical Communications Facility | Pennsylvania | DBB | Q4 |
| 1-5M | University Park, USDA-ARS | Pennsylvania | DBB | Q4 |
| 20-40M | 25+ Sole Source 8(A) Actions | MD, PA | DBB | Q4 |



https://www.nab.usace.army.mil/

NAB Intranet North Atlantic Divi... Map -- Headquart... US Army Corps ..

About Business With Us Missions Locations Careers Media Contact Coronavirus

Search Baltimore Dis

US Army Corps of Engineers Baltimore District Website

HOT INFO We appreciate the outpouring of support our District has received from private indus...[more](#)

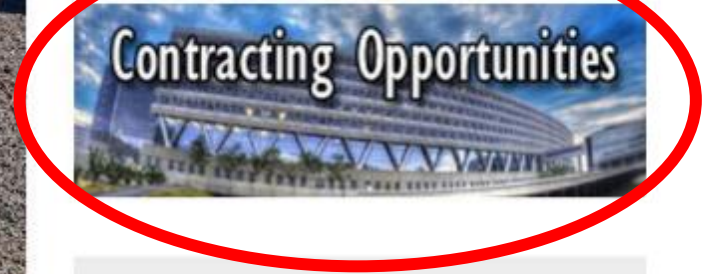
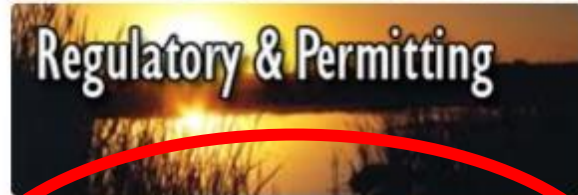
www.nab.usace.army.mil



Sayers Stilling Basin

Contractors work to install a pipe to re-route water in the stilling basin at Foster J. Sayers Dam in Centre County, Pennsylvania, Aug. 19, 2020. The effort will help repair the damage of the stilling basin floor and baffle blocks, as well as to prevent future damages and downstream erosion.

[MORE PHOTOS](#) [NEWS RELEASE](#)



Baltimore District Social Media

FACEBOOK TWITTER

Baltimore District, U.S....
5,715 likes

Like Page Share



