

# U.S. ARMY CORPS OF ENGINEERS – BALTIMORE DISTRICT

LTC KUHLMANN  
Deputy Commander  
Baltimore District  
Date: 24 October 2019

*"The views, opinions and findings contained in this report are those of the authors(s) and should not be construed as an official Department of the Army position, policy or decision, unless so designated by other official documentation."*



US Army Corps  
of Engineers®

<http://www.nab.usace.army.mil/>





# BALTIMORE DISTRICT: AN OVERVIEW



## Overview

- A full service district serving 6 states and the District of Columbia in the mid-Atlantic and National Capital regions
- Provides primary support to 14 military installations
- Manages water resources in the Susquehanna and Potomac watersheds and upper Chesapeake Bay
- Provides all drinking water to our Nation's capital
- Executes regional and national programs for USACE

## District Capabilities

- Engineering, Design, and Construction
- Environmental Services
- Dredging Federal Channels
- Dam/Levee Operations & Maintenance
- Disaster Response & Recovery
- Real Estate Services
- Value Engineering
- Hurricane Modeling
- Military Munitions Response
- Radiological Center of Expertise

## The Numbers

- 1,100 civilian employees
- \$1.5B expenditures per year
- 290 miles of federal channels
- 16 reservoir projects
- 11 recreational projects
- 15 million+ visitor hours per year
- 670 acres of oyster habitat created
- \$16B in flood damages prevented to date

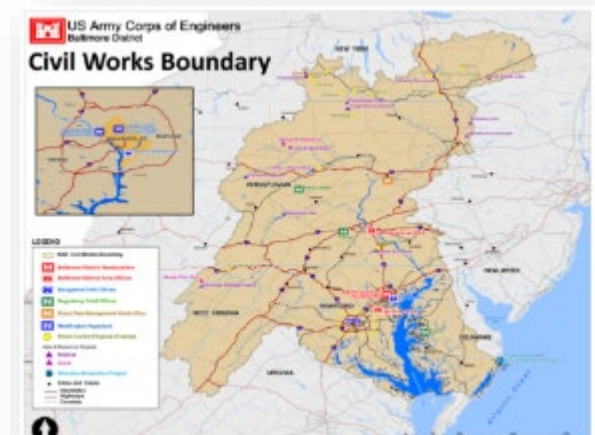


COL Litz

## Support to our Military



## Support to the Public



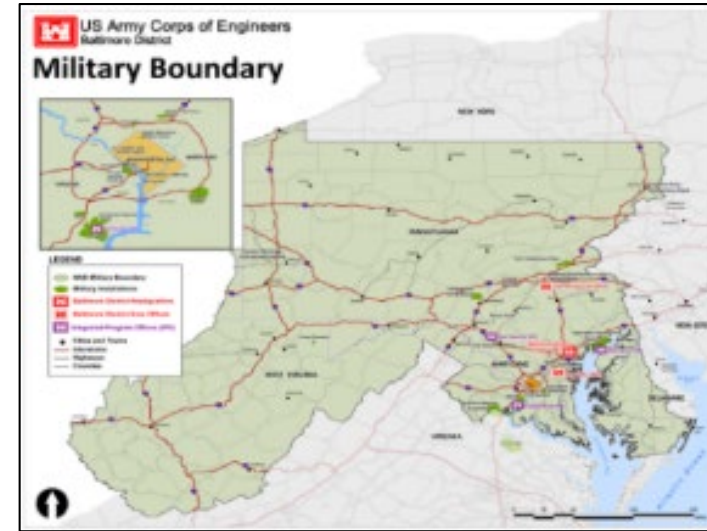


# BALTIMORE DISTRICT: WHAT WE ARE KNOWN FOR



## HIGHLIGHTS

- A full service district serving six states and the District of Columbia in the mid-Atlantic and National Capital regions
- Provides primary support to 14 military installations
- Manages water resources in the Susquehanna and Potomac watersheds and upper Chesapeake Bay
- Provides all drinking water to our Nation's capital
- Executes regional and national programs for USACE



## Civil Works Boundary







# BALTIMORE DISTRICT: WHAT WE ARE KNOWN FOR



- One of the largest and most visible military missions in the country (National Capital Region)
- Support to the Intelligence Community (NSA, ODNI and others)
- Support to the Port of Baltimore and regional economy
- The Washington Aqueduct – drinking water for Washington DC
- Protection and restoration of the Chesapeake Bay
- Regional HTRW Design Center/National Military Munitions Design Center/Regional Center of Expertise for Health Physics



# BALTIMORE DISTRICT: HOW WE BUY



- Stand-Alone contracts – award individual requirements
- Indefinite Delivery/Indefinite Quantities (IDIQ) Contracts,
  - Single Award Task Order Contract (SATOC)
  - Multiple Award Task Order Contracts (MATOCs)





# BALTIMORE DISTRICT BUSINESS WITH US





## BALTIMORE DISTRICT

### US Army Corps of Engineers

Search Baltimore District

[HOME](#) [ABOUT](#) [BUSINESS WITH US](#) [MISSIONS](#) [LOCATIONS](#) [CAREERS](#) [MEDIA](#) [CONTACT](#)



**Fiscal Year 2019 Baltimore Harbor Dredging is Underway**

FY19 Baltimore Harbor maintenance dredging is underway, with work being done in several channels this cycle. This work is done to ensure continued safe navigation in and out of the Port of Baltimore, a huge economic engine for the region.

[News Release](#)



#### Spring Valley



#### Regulatory & Permitting



#### Contracting Opportunities

#### Quick Links



#### Latest News Releases

Army Corps crews begin dredging roughly 2 million cubic yards of material from six Baltimore Harbor channels today

12/10/2018

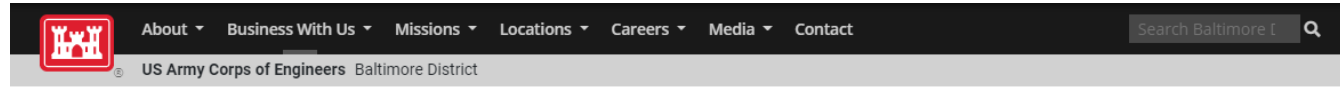
#### Baltimore District Social Media

[f FACEBOOK](#) [t TWITTER](#)

[www.nab.usace.army.mil](http://www.nab.usace.army.mil)



# BALTIMORE DISTRICT BUSINESS WITH US



Home / Business With Us

## Business With Us



The U.S. Army Corps of Engineers has played a key role in the development and growth of the nation in peace and in war. For more than 200 years, the Corps has supported the nation's river-based commerce, protected established population centers, provided disaster response and constructed military facilities to protect our nation.

The Baltimore District (NAB) is a full service District that executes regional and national programs for USACE. Headquartered adjacent to Baltimore's Inner Harbor, the District provides engineering, construction, environmental and real estate expertise to a variety of important projects and customers. The 1,100 employees of the Baltimore District continue to serve the Mid-Atlantic States and the Nation.

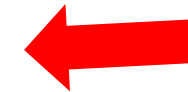
Civil Works support encompasses the Susquehanna, Potomac, and upper Chesapeake Bay watersheds, and it spans across six states and the District of Columbia. NAB is responsible for 15 reservoirs with 11 recreation projects, 290 miles of federal navigation channels, 148 miles of federally-constructed levees, and has restored hundreds of acres of wildlife habitat in the Chesapeake Bay.

Military programs are primarily in Maryland, Pennsylvania, District of Columbia, northern Virginia, Delaware, and West Virginia. In addition to supporting service members at more than a dozen major military installations in the District's primary area of responsibility, NAB provides real estate, environmental, and specialized support to military and other Federal clients across the nation and the globe.

NAB fully supports the government policy of placing a fair proportion of its contracts for architect and engineering, environmental, construction and support services with qualified small, small disadvantaged, women-owned, HUBZone and service-disabled veteran-owned small businesses. In addition, such concerns are to also be afforded the maximum practicable opportunity to participate as subcontractors in qualifying contracts awarded to large businesses.

## Contacts

| Name               | Email  | Title   |
|--------------------|--|---|
| COL John T. Litz   | <a href="mailto:john.t.litz@usace.army.mil">john.t.litz@usace.army.mil</a>                   | Baltimore District Commander                            |
| Dave Morrow        | <a href="mailto:david.morrow@usace.army.mil">david.morrow@usace.army.mil</a>                 | Deputy District Engineer, Programs & Project Management |
| Tamika Gray        | <a href="mailto:tamika.gray@usace.army.mil">tamika.gray@usace.army.mil</a>                   | Deputy for Small Business                               |
| Ron Maj            | <a href="mailto:ronald.j.maj@usace.army.mil">ronald.j.maj@usace.army.mil</a>                 | Chief, Engineering Division                             |
| Emily Schiffmacher | <a href="mailto:emily.n.schiffmacher@usace.army.mil">emily.n.schiffmacher@usace.army.mil</a> | Deputy Chief, Engineering Division                      |
| Shelley Spayde     | <a href="mailto:shelley.a.spayde@usace.army.mil">shelley.a.spayde@usace.army.mil</a>         | Military Programs                                       |
| Chris Nolta        | <a href="mailto:christopher.m.nolta@usace.army.mil">christopher.m.nolta@usace.army.mil</a>   | Civil Programs  |
| Mike Rogers        | <a href="mailto:michael.j.rogers@usace.army.mil">michael.j.rogers@usace.army.mil</a>         | Environmental & Munitions Design                        |



## Helpful Links

[Military Construction Boundary Map](#)  
[Civil Works Boundary Map](#)  
[Small Business](#)  
[U.S. Small Business Administration System for Award Management \(Formerly CCR\)](#)  
[Real Estate](#)  
[Contracting](#)

## FY20 Presentations



<http://www.nab.usace.army.mil/BusinessWithUs.aspx>



# FY20 ACQUISITION FORECAST

\*SUBJECT TO CHANGE BY 30 NOVEMBER 2019



|   |                       |  |                                    |                                |        |   |  |
|---|-----------------------|--|------------------------------------|--------------------------------|--------|---|--|
| 5 | CIVIL<br>Construction | <b>2nd High Reservoir Maintenance and Improvements IFB</b> – The project consists of improvements to address operational and sanitary survey issues. This will result in improved water quality and operation within the distribution system. The work includes the replacement of the sample building; the replacement of drain valve assembly; installation of mechanical mixers; sealing of all interior joints and cracks; the re-routing of a sample line to the DC Water sewer.  | 1 <sup>st</sup> or 2 <sup>nd</sup> | \$1,000,000 -<br>\$5,000,000   | 237110 | TBD   | Washington Aqueduct<br>Washington, DC  |
| 6 | CIVIL<br>Construction | <b>Civil DB/DBB SATOC</b> – Specific work may include, but is not limited to: site clearing and grubbing, excavations, drainage and utility systems, roadways and sidewalks, grouting and joint sealing, cast in place concrete, brick masonry, block and tile masonry, building renovation, new construction, additions, alterations, maintenance and repairs to infrastructure, asbestos abatement, lead paint removal, structural steel, steel joists and decking, rough carpentry, finish carpentry, built in cabinetry and furniture, roofing and siding, sheet-metal work, doors, windows and glazing, window coverings, entrances and store fronts, lath and plaster, drywall, painting and wall coverings, floor tile and carpeting and contiguous mechanical/electrical work. | 2 <sup>nd</sup>                    | \$8,000,000                    | 237110 | 8(a) competitive<br><i>as a result of<br/>market research</i> | Washington Aqueduct<br>Washington, DC  |
| 7 | CIVIL<br>Construction | <b>Mechanical DB/DBB SATOC</b> – The work shall consist primarily of water mains repairs and relocations, pump, valve and sluice gate replacement or repairs, industrial equipment repair, heating, ventilation and air conditioning (HVAC) modifications, etc.  | 3 <sup>rd</sup>                    | \$8,000,000                    | 237110 | 8(a) competitive<br><i>as a result of<br/>market research</i> | Washington Aqueduct<br>Washington, DC  |
| 8 | CIVIL<br>Construction | <b>Baltimore Harbor &amp; Channels Maintenance Dredging</b> – The project will consist of maintenance dredging of approximately 2,000,000 cubic yards of material from various Federal Channels servicing Baltimore Harbor. The  | 4 <sup>th</sup>                    | \$10,000,000 -<br>\$25,000,000 | 237990 | TBD   | Federal Channels<br>servicing Baltimore<br>Harbor (including the<br>Chesapeake &<br>Delaware) Baltimore, |

<http://www.nab.usace.army.mil/Business-With-Us/>





**Today's presentation is available for download**  
**<http://www.nab.usace.army.mil/BusinessWithUs.aspx>**

Stay engaged  
with us online:



<https://www.facebook.com/USACEBaltimore/>



[@USACEBaltimore](https://twitter.com/USACEBaltimore)



[www.nab.usace.army.mil](http://www.nab.usace.army.mil)