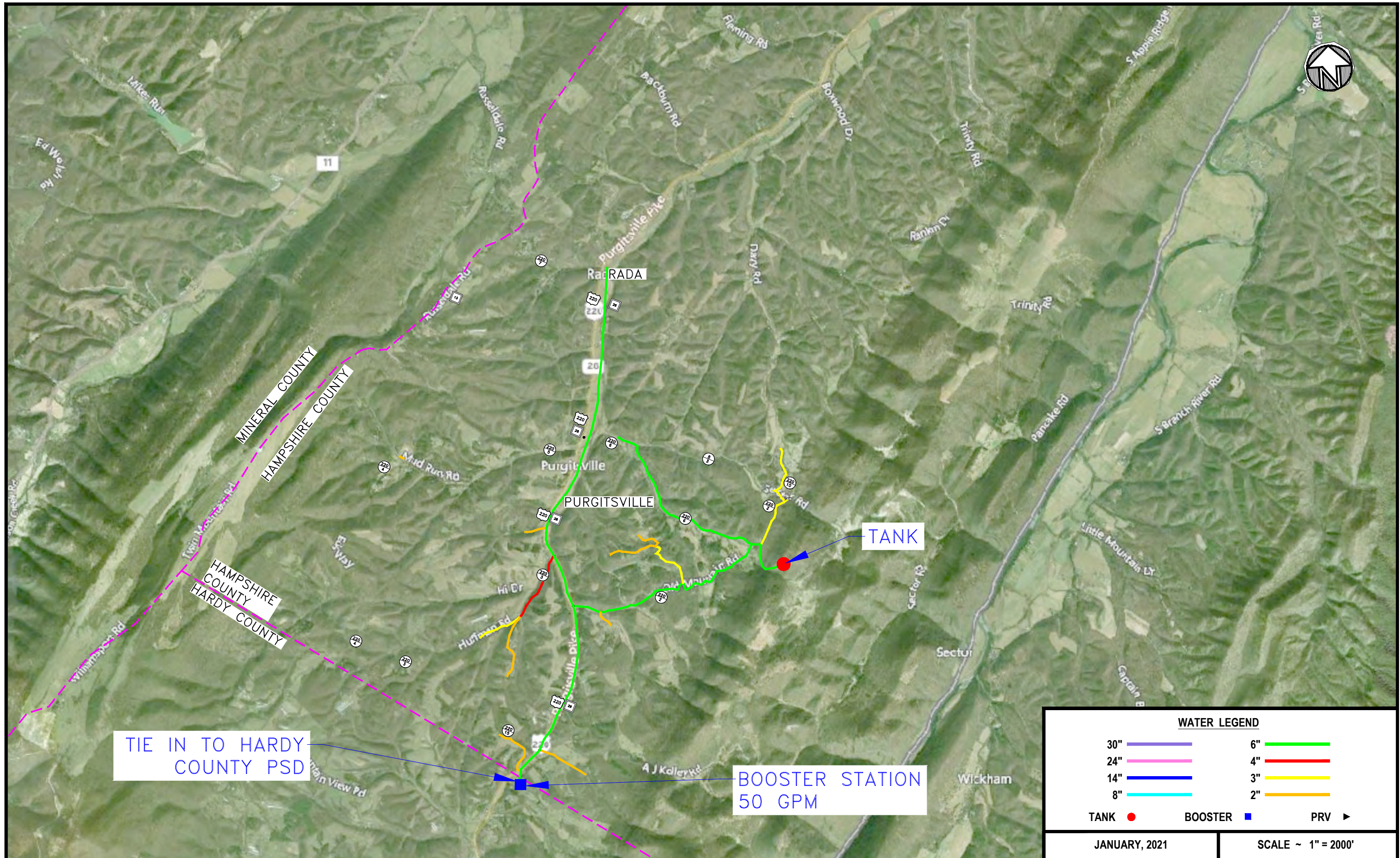


APPENDIX A

Project Area Maps



WATER LEGEND			
30"		6"	
24"		4"	
14"		3"	
8"		2"	
TANK		BOOSTER	
			PRV

JANUARY, 2021 SCALE ~ 1" = 2000'

No.	DATE	DESCRIPTION	BY
2	1/1/2021	REVISED PER APP-1	RRB
1	1/1/2020	OR APP-1	RRB

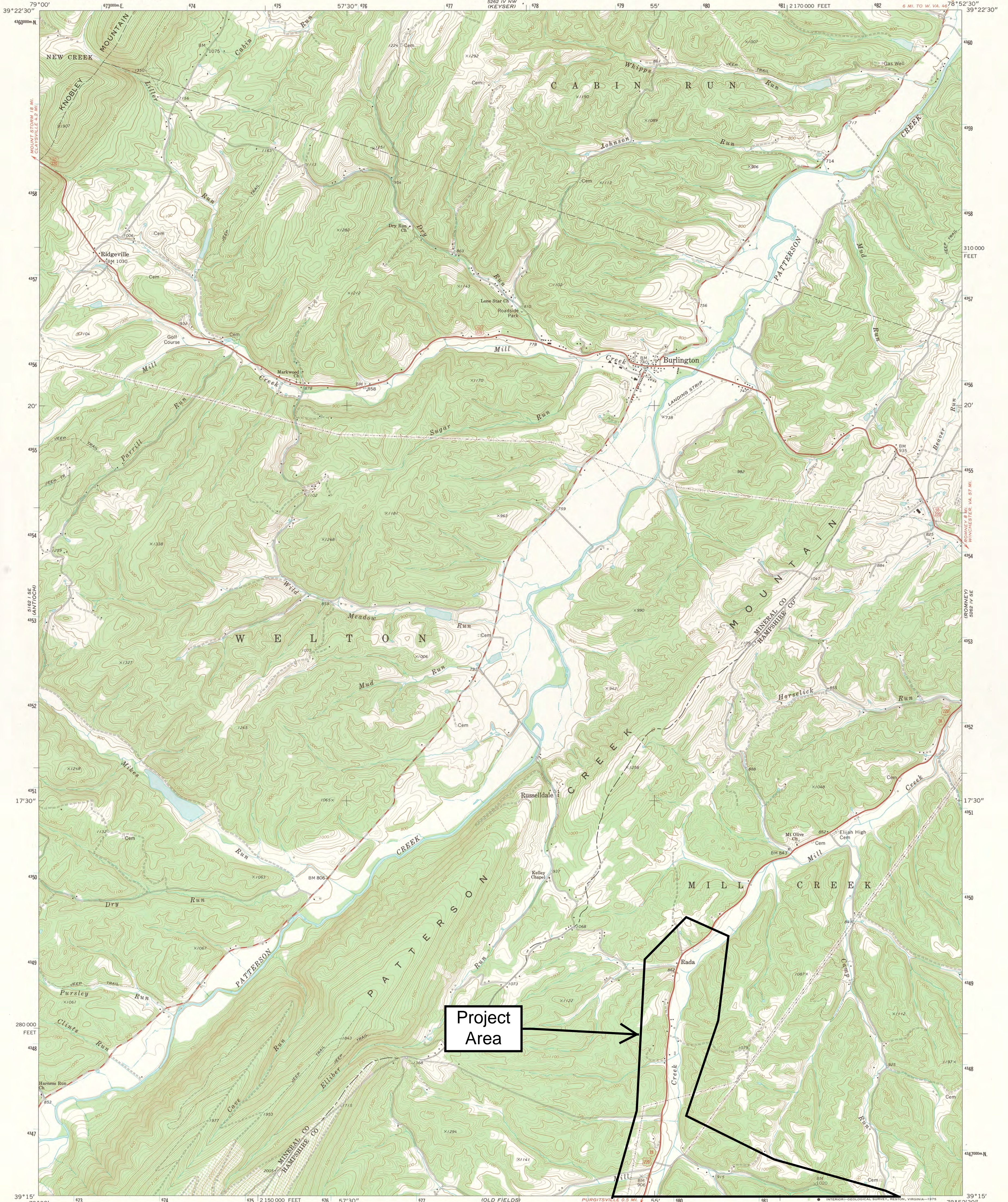
THIS DRAWING REPRESENTS THE DESIGN AND ENGINEERING EFFORTS OF CERRONE ASSOCIATES, INC. THE DESIGN AND ASSOCIATED DOCUMENTS WERE INTENDED FOR A SPECIFIC PURPOSE AND MAY NOT BE REPRODUCED, LOANED, COPIED OR USED FOR ANY OTHER PURPOSE WITHOUT THE WRITTEN CONSENT OF CERRONE ASSOCIATES, INC.

CERRONE ASSOCIATES, INC.
CONSULTING ENGINEERS • WATER & WASTEWATER SYSTEMS
97-14TH STREET, WHEELING, WV 26003-2497

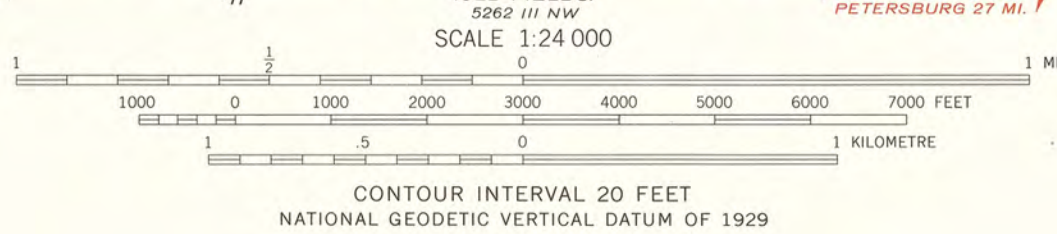
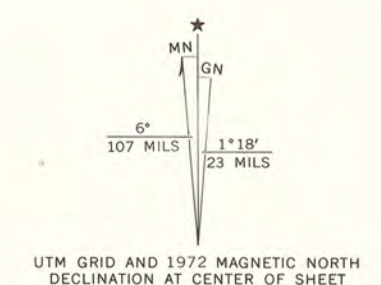
FIELD LAYOUT -
DRAWN BY RRB
CONST. CHECKED BY -
RECORD CHECKED BY -
ISSUE DATE 1/8/21

PROJECT TITLE	CENTRAL HAMPSHIRE PSD HAMPSHIRE COUNTY, WEST VIRGINIA	AS SHOWN
	SOUTHWESTERN HAMPSHIRE COUNTY WATER EXTENSION	PROJECT NO. CE10-10W
DRAWING TITLE	Appendix A - Project Area Map	DRAWING NO. Project Area Map

\\DELL-SERVER\Server\Data\Project Data\Central Hampshire - CE10-10W Purgitsville Water Extension\Drawings\Location.dwg - 1/6/2021 12:29:28 PM, DWG To PDF.pc3



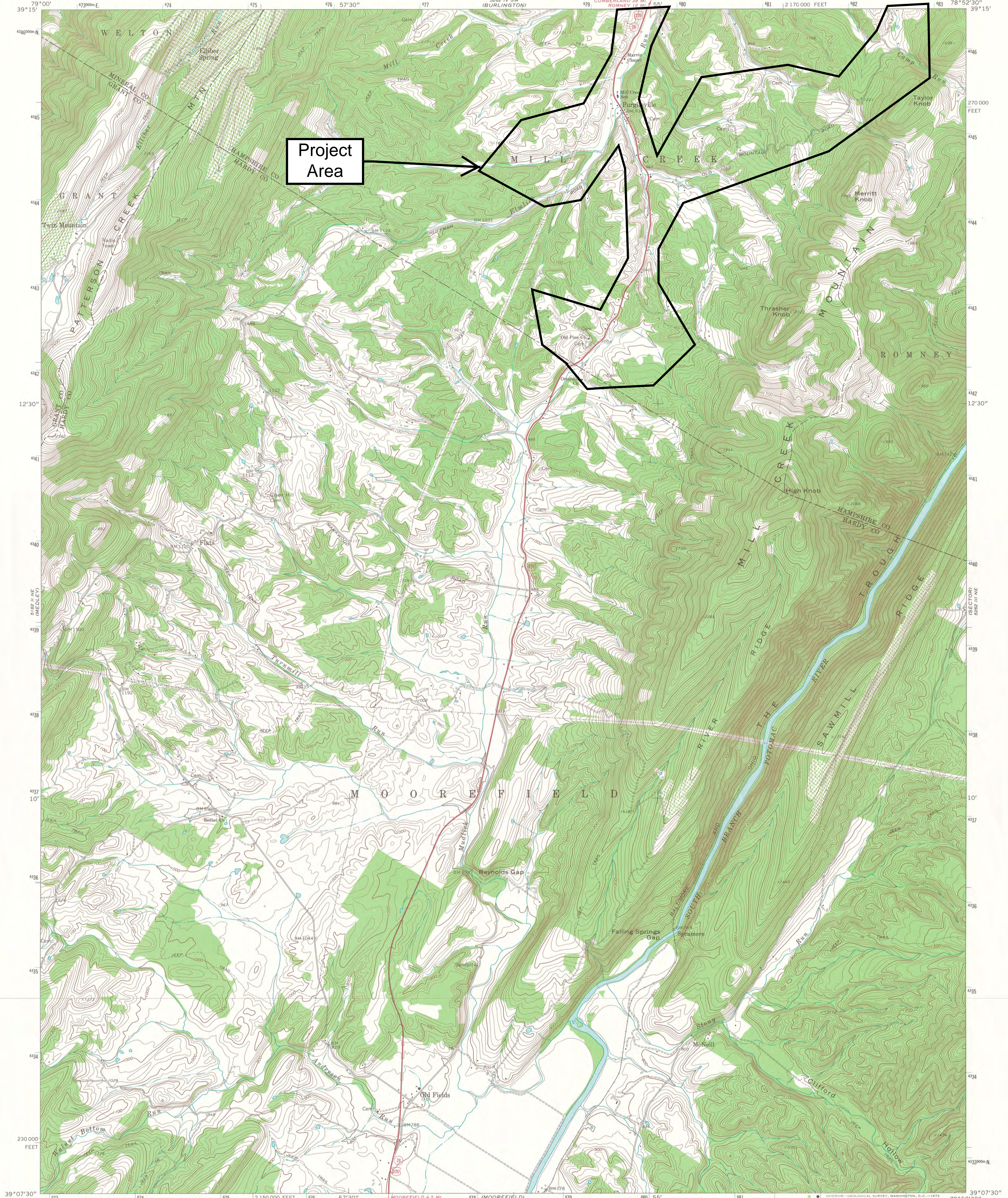
Maped, edited, and published by the Geological Survey
Control by USGS and NOS/NOAA
Topography by photogrammetric methods from aerial photographs
taken 1971. Field checked 1972
Projection and 10,000-foot grid ticks: West Virginia coordinate
system, north zone (Lambert conformal conic)
1000-metre Universal Transverse Mercator grid ticks,
zone 17, shown in blue. 1927 North American datum
Fine red dashed lines indicate selected fence and field lines where
generally visible on aerial photographs. This information is unchecked
Map photoinspected 1979
No major culture or drainage changes observed



ROAD CLASSIFICATION	
Primary highway, hard surface	Light-duty road, hard or improved surface
Secondary highway, hard surface	Unimproved road
Interstate Route	U. S. Route
	State Route

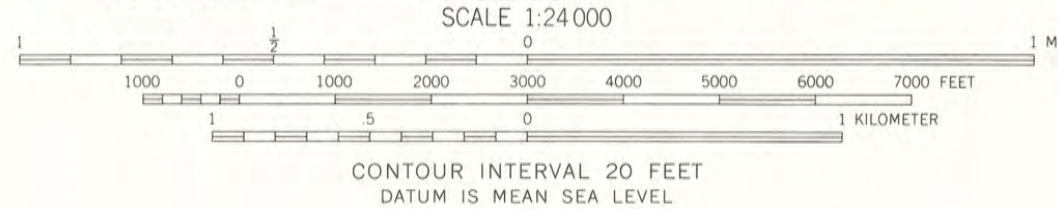
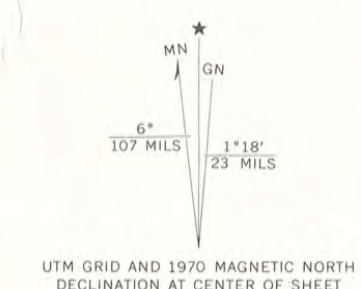
THIS MAP COMPLIES WITH NATIONAL MAP ACCURACY STANDARDS
FOR SALE BY U. S. GEOLOGICAL SURVEY
DENVER, COLORADO 80225, OR RESTON, VIRGINIA 22092
A FOLDER DESCRIBING TOPOGRAPHIC MAPS AND SYMBOLS IS AVAILABLE ON REQUEST

BURLINGTON, W. VA.
SW/4 KEYSER 15' QUADRANGLE
N3915-W7852.5/7.5
1972
PHOTOINSPECTED 1979
AMS 5262 IV SW-SERIES V854



Project Area

Mapped, edited, and published by the Geological Survey
Control by USGS and USC&GS
Topography by photogrammetric methods from aerial
photographs taken 1966. Field checked 1970
Projection and 10,000-foot grid ticks: West Virginia coordinate
system, north zone (Lambert conformal conic)
1000-meter Universal Transverse Mercator grid ticks,
zone 17, shown in blue. 1927 North American datum
Fine red dashed lines indicate selected fence and field lines where
generally visible on aerial photographs. This information is unchecked



ROAD CLASSIFICATION

Primary highway, hard surface	Light duty road, hard or improved surface
Secondary highway, hard surface	Unimproved road
Interstate Route	U. S. Route
	State Route



THIS MAP COMPLIES WITH NATIONAL MAP ACCURACY STANDARDS
FOR SALE BY U. S. GEOLOGICAL SURVEY, WASHINGTON, D. C. 20242
A FOLDER DESCRIBING TOPOGRAPHIC MAPS AND SYMBOLS IS AVAILABLE ON REQUEST

OLD FIELDS, W. VA.
NW/4 MOOREFIELD 15' QUADRANGLE
N3907.5—W7852.5/7.5
1970
AMS 5262 III NW—SERIES V854