

Planning Aid Report for the Chesapeake Bay Watershed Comprehensive Study:

A Summary of U.S. Fish and Wildlife Service Biological Resources in Chesapeake Bay Watershed.

Prepared by:
U.S. Fish and Wildlife Service
New York Field Office
Pennsylvania Field Office
West Virginia Field Office
Chesapeake Bay Field Office



Sources used to develop priorities

- Looked at National Strategic priorities
- Regional priorities
- Strategic Plans for local Fish and Wildlife Field Offices, Fisheries Offices, Refuges (CCP), Coastal Programs.

NORTHEAST REGION PRIORITIES: Guiding Our Investments 2016 and Beyond

U.S. Fish & Wildlife Service



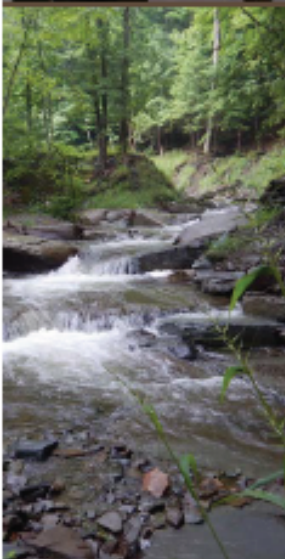
Supporting our Workforce

We want to be part of an empowered, engaged, and supported team. When we are, we know we can accomplish more and have more satisfaction doing so. We will continue to prioritize the development of our workforce. We will promote collaboration and celebrate our successes, and continue providing training, career growth opportunities, and employee development.



Connecting People to Nature

We will inspire and help develop the next generation of conservation professionals and environmental stewards. In an increasingly urbanized nation, we will provide opportunities for youth and under-served communities to connect with nature to experience and appreciate the importance of the outdoors and green spaces. We will continue to grow and support our urban engagement efforts, with a special emphasis on urban partnerships and we will continue to focus on youth and urban aquatic and terrestrial conservation opportunities.



Strategic Conservation

Watersheds are the foundation of Northeast Region landscapes. Our history, economics, recreation, as well as fish and wildlife all depend on rivers, streams, wetlands, and our extensive coast. Much of our strategic conservation over the next 10 years should emphasize creating sustainable watersheds to support northeast fish and wildlife. To do so, we need to focus on:

- **Landscape Conservation**
Using best available science, we will facilitate conservation for suites of species on our lands and with willing private landowners, working closely with states, Tribes, and other partners. We will approach conservation of these suites of species and their watersheds from a landscape perspective.
- **Aquatic Connectivity**
Prioritizing aquatic connectivity efforts that provide for passage, community protection, and enhanced recreational opportunities is a conservation legacy to which we can all contribute. Actions will be prioritized within watersheds using best available science and decision support tools.
- **At-Risk Species**
Our relationships, and the partnerships that stem from them, enable us to proactively conserve and recover at-risk species. Using new and developing planning tools, adaptive management, and in special partnership with states and Tribes, we will work together to proactively address threats such that we can avoid the need to list species under the Endangered Species Act. Working at landscape scales, we will conserve and recover species, with a special emphasis on species facing threats that can be reasonably addressed.
- **Coastal Resilience**
We will lead by applying green and hybrid approaches to provide for a more resilient coast that better withstands storms, sea level rise and other climate-related changes to provide more resilient habitat for wildlife, as well as protect communities and infrastructure.



Strategic Conservation

- Landscape Conservation - Using best available science we will facilitate conservation for suites of species on our landscape with willing partners.
- Aquatic Connectivity –Prioritizing aquatic connectivity that provides passage, community protection and enhanced recreational opportunities.

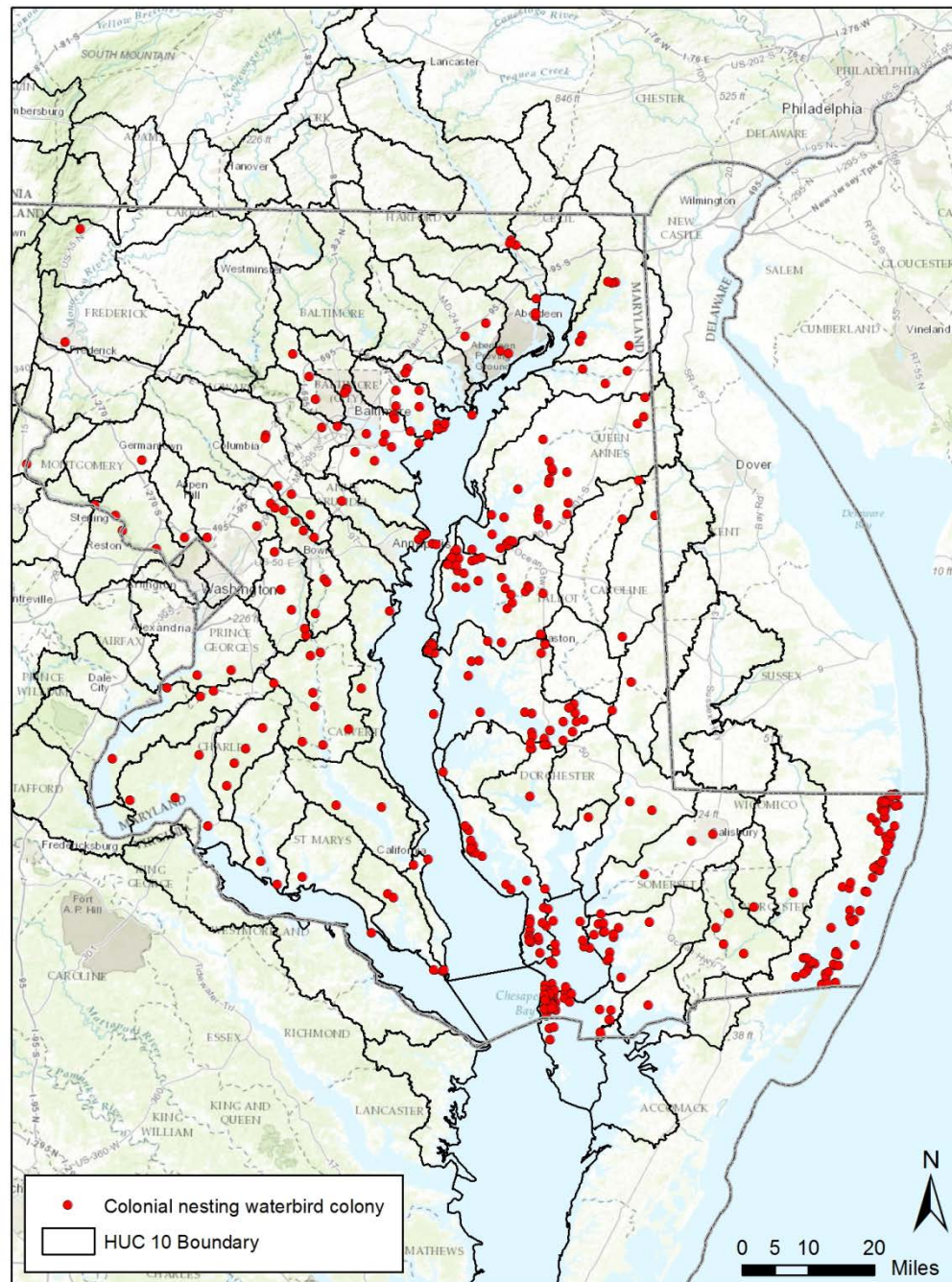
Strategic Conservation

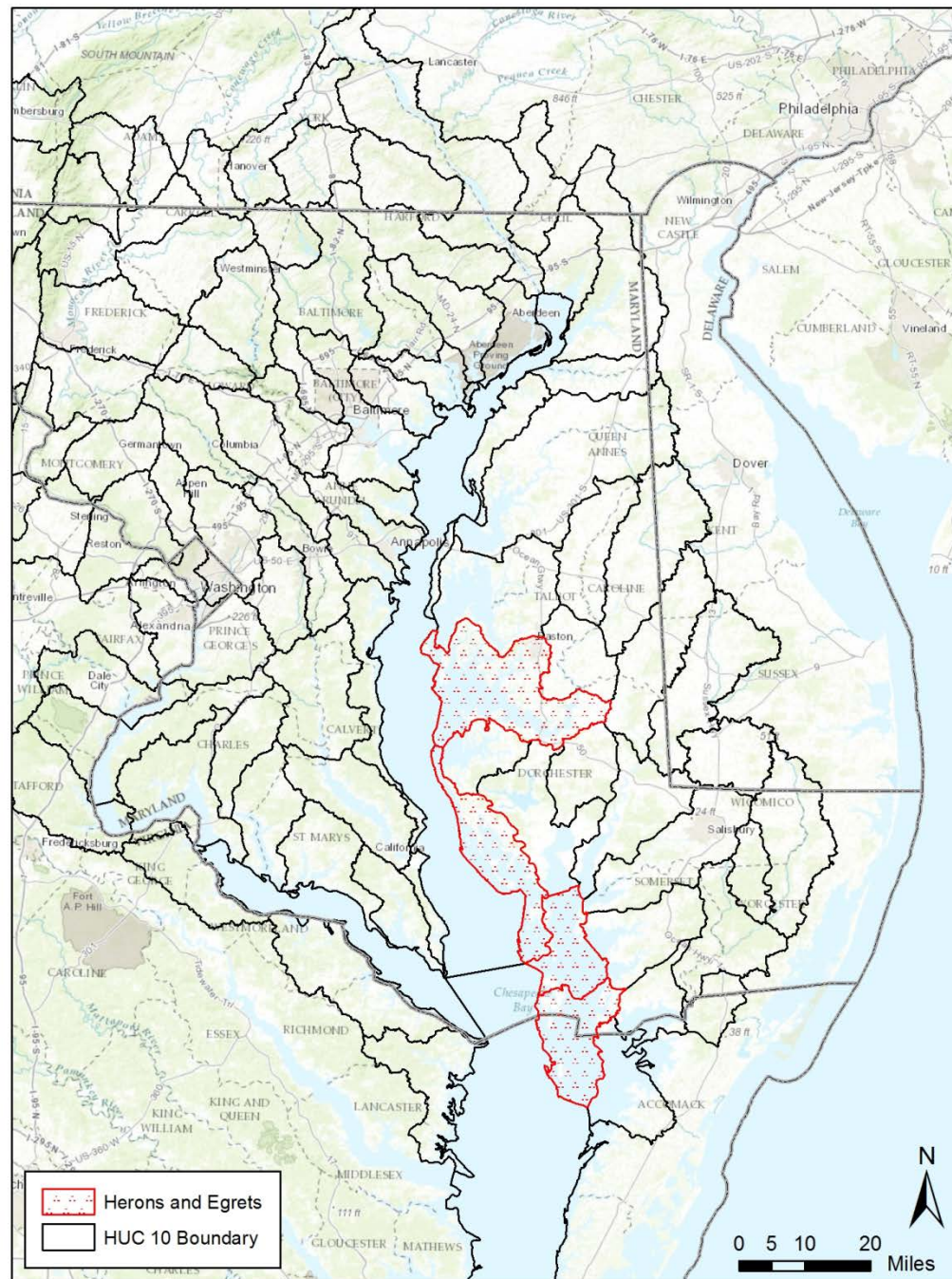
- At-Risk Species – Working with partners we will conserve and recover At-Risk Species. We will work together to proactively address threats to avoid the need to list species under the Endangered Species Act. We will also work on a landscape scale on species that are facing threats that can reasonably be addressed.
- Coastal Resiliency – Working with partners, we will use nature-based design, green and hybrid infrastructure design to provide for a more resilient coast while enhancing and protecting fish and wildlife habitat.

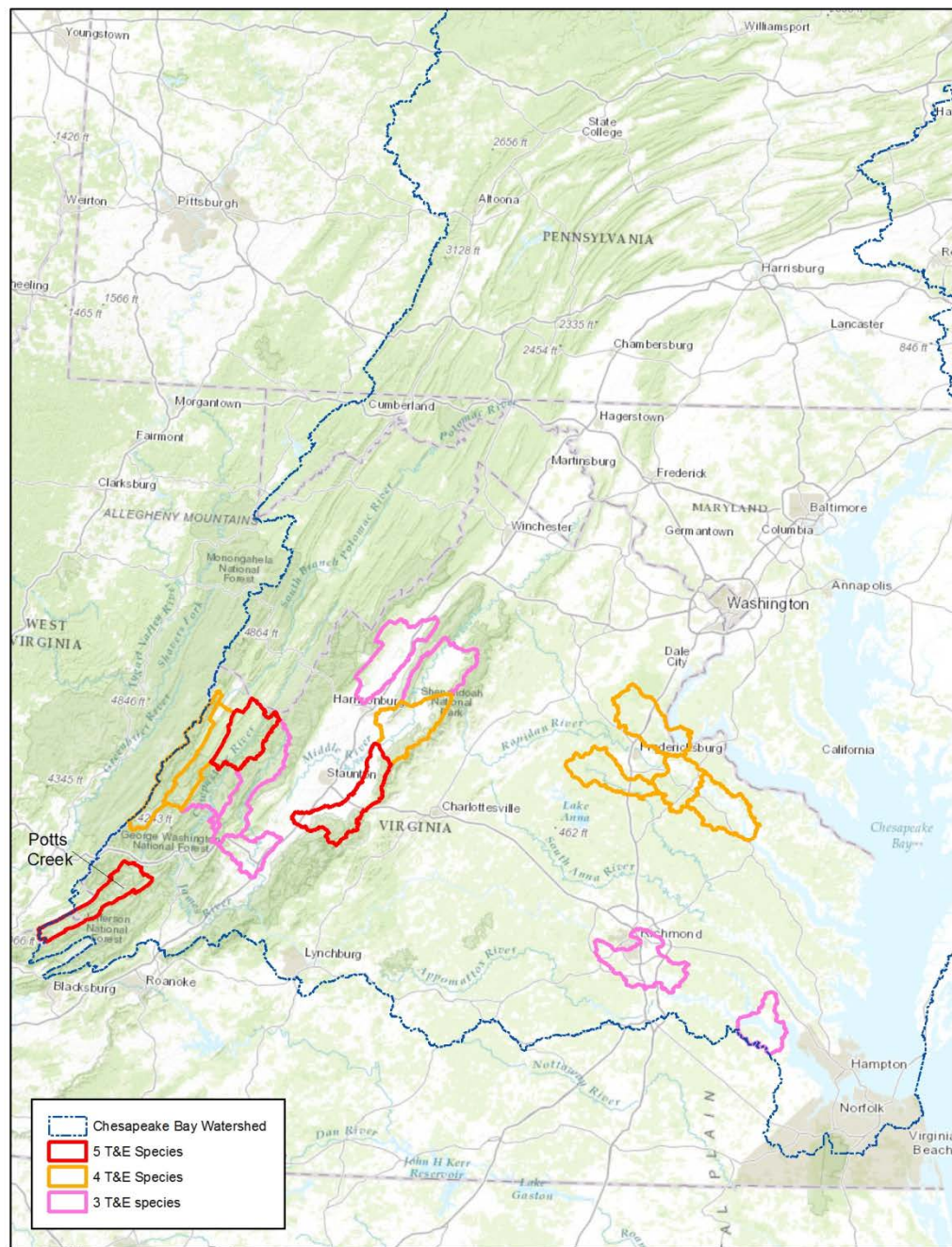
Stressors to the Chesapeake Bay Watershed

- 10 stressors were identified by Fish and Wildlife Service that have the major influence on fish and wildlife resources in the Watershed. These include:

- Climate Change
- Invasive Species
- Silviculture
- Mining
- Water Withdrawal
- Urbanization
- Agriculture
- Oil and Gas Development
- Flood Control Structures
- Hydropower Dams and Road Crossing Culverts







Data behind the layer

FID	STATES	HUC10	NAME	GROUPNAME	SNAME	SCOMNAME	FEDSTAT
147	VA,WV	0208020104	Potts Creek	Vascular Plant	Boechera serotina	Shale barren rock cress	LE
148	VA,WV	0208020104	Potts Creek	Vascular Plant	Scirpus ancistrochaetus	Northeastern Bulrush	LE
149	VA,WV	0208020104	Potts Creek	Invertebrate Animal	Pleurobema collina	James Spiny mussel	LE
150	VA,WV	0208020104	Potts Creek	Vertebrate Animal	Myotis sodalis	Indiana Bat	LE
177	VA,WV	0208020104	Potts Creek	Vertebrate Animal	Myotis septentrionalis	Northern Long-eared Bat	LT