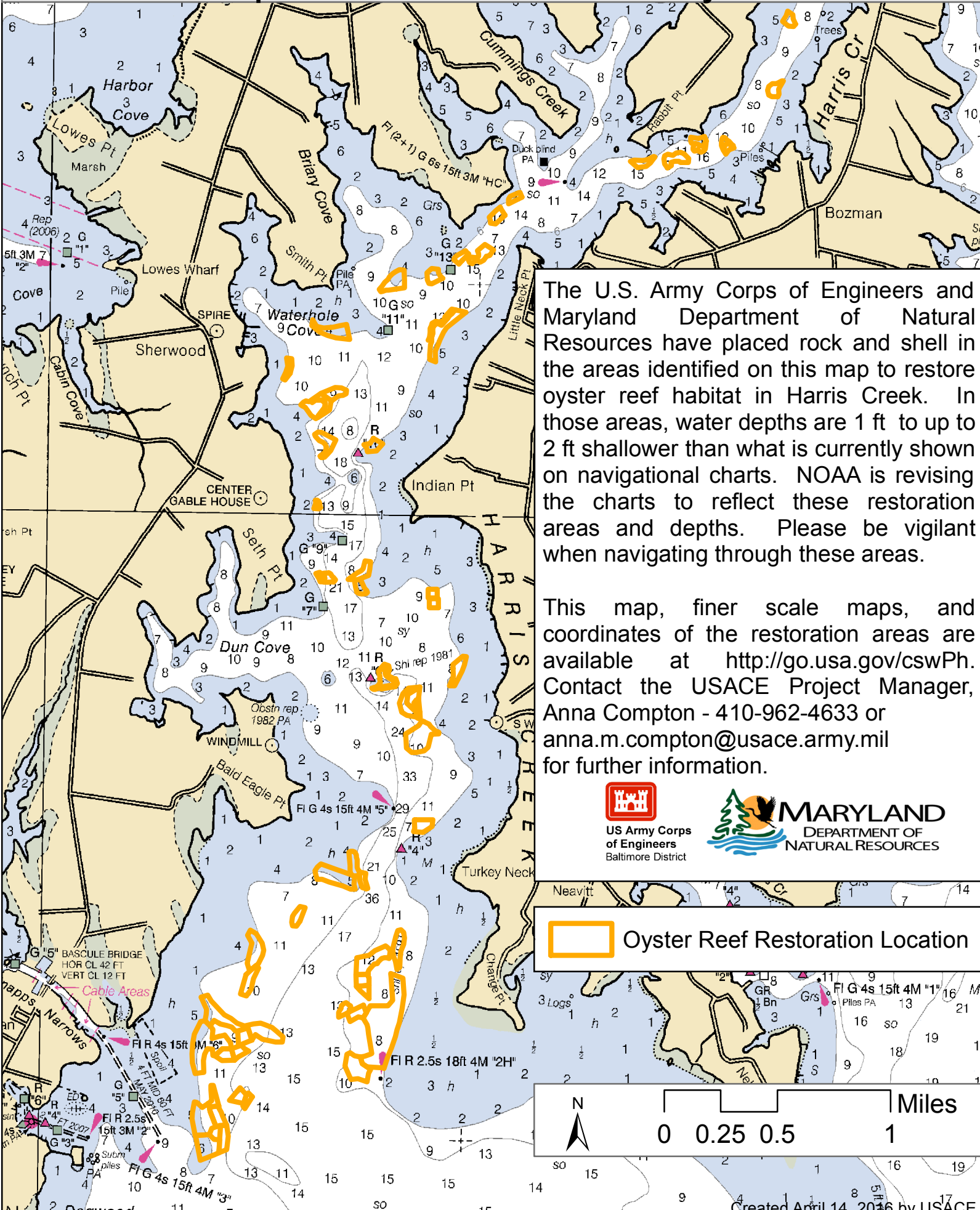


Harris Creek Oyster Restoration

Notice: water depths are shallower than currently shown on charts



The U.S. Army Corps of Engineers and Maryland Department of Natural Resources have placed rock and shell in the areas identified on this map to restore oyster reef habitat in Harris Creek. In those areas, water depths are 1 ft to up to 2 ft shallower than what is currently shown on navigational charts. NOAA is revising the charts to reflect these restoration areas and depths. Please be vigilant when navigating through these areas.

This map, finer scale maps, and coordinates of the restoration areas are available at <http://go.usa.gov/cswPh>. Contact the USACE Project Manager, Anna Compton - 410-962-4633 or anna.m.compton@usace.army.mil for further information.



US Army Corps of Engineers
Baltimore District



MARYLAND
DEPARTMENT OF
NATURAL RESOURCES



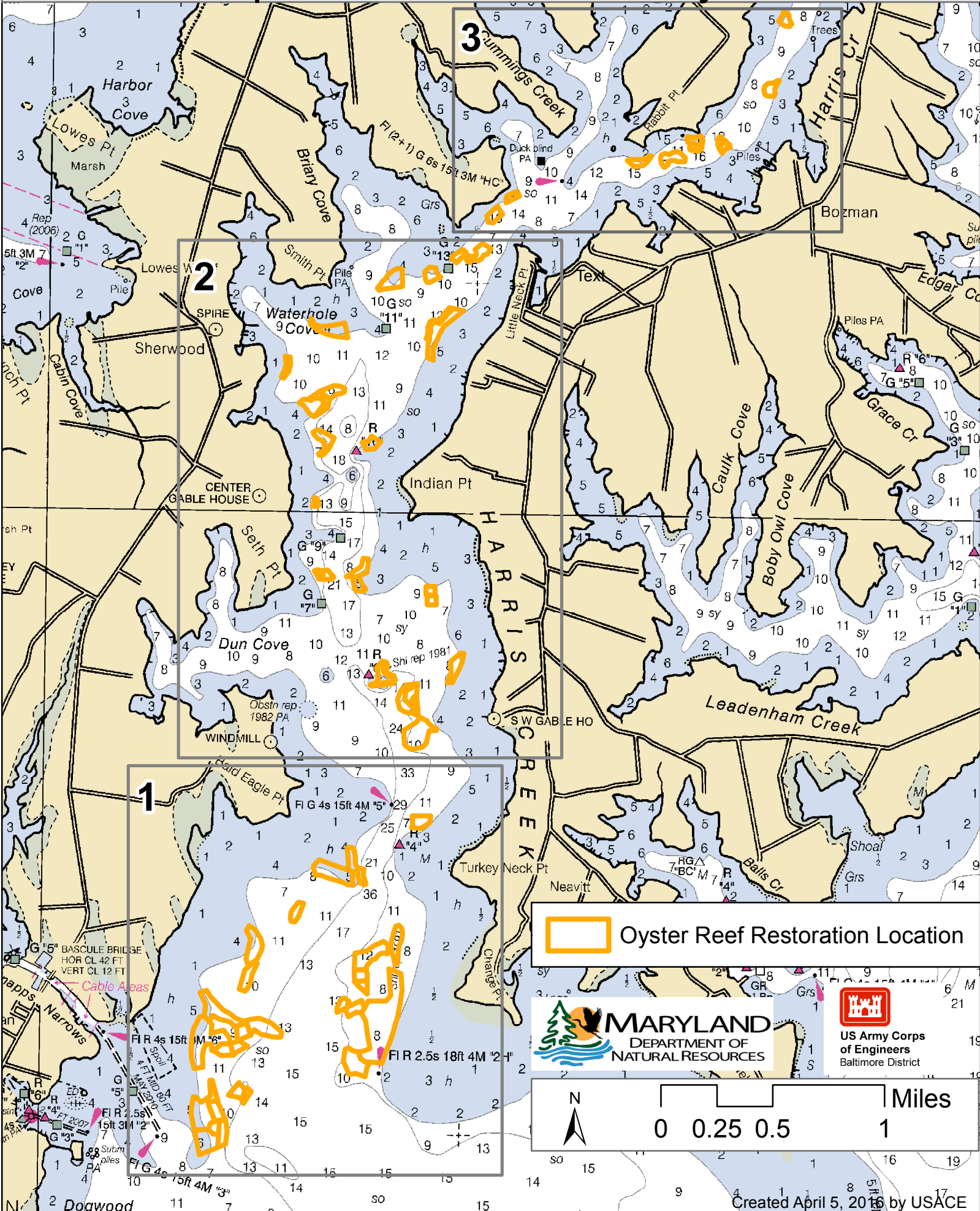
Oyster Reef Restoration Location



Miles
0 0.25 0.5 1

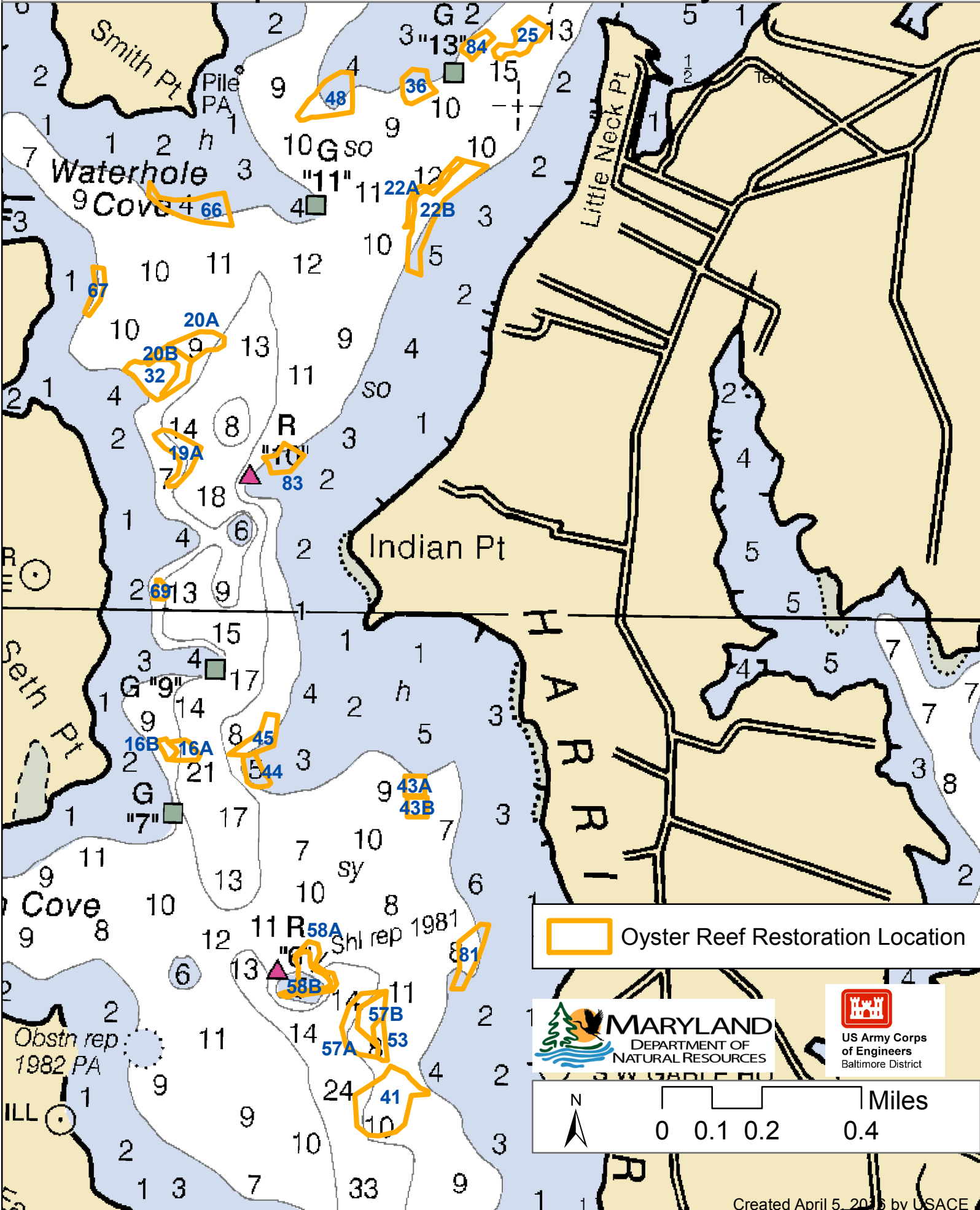
Harris Creek Oyster Restoration

Notice: water depths are shallower than currently shown on charts



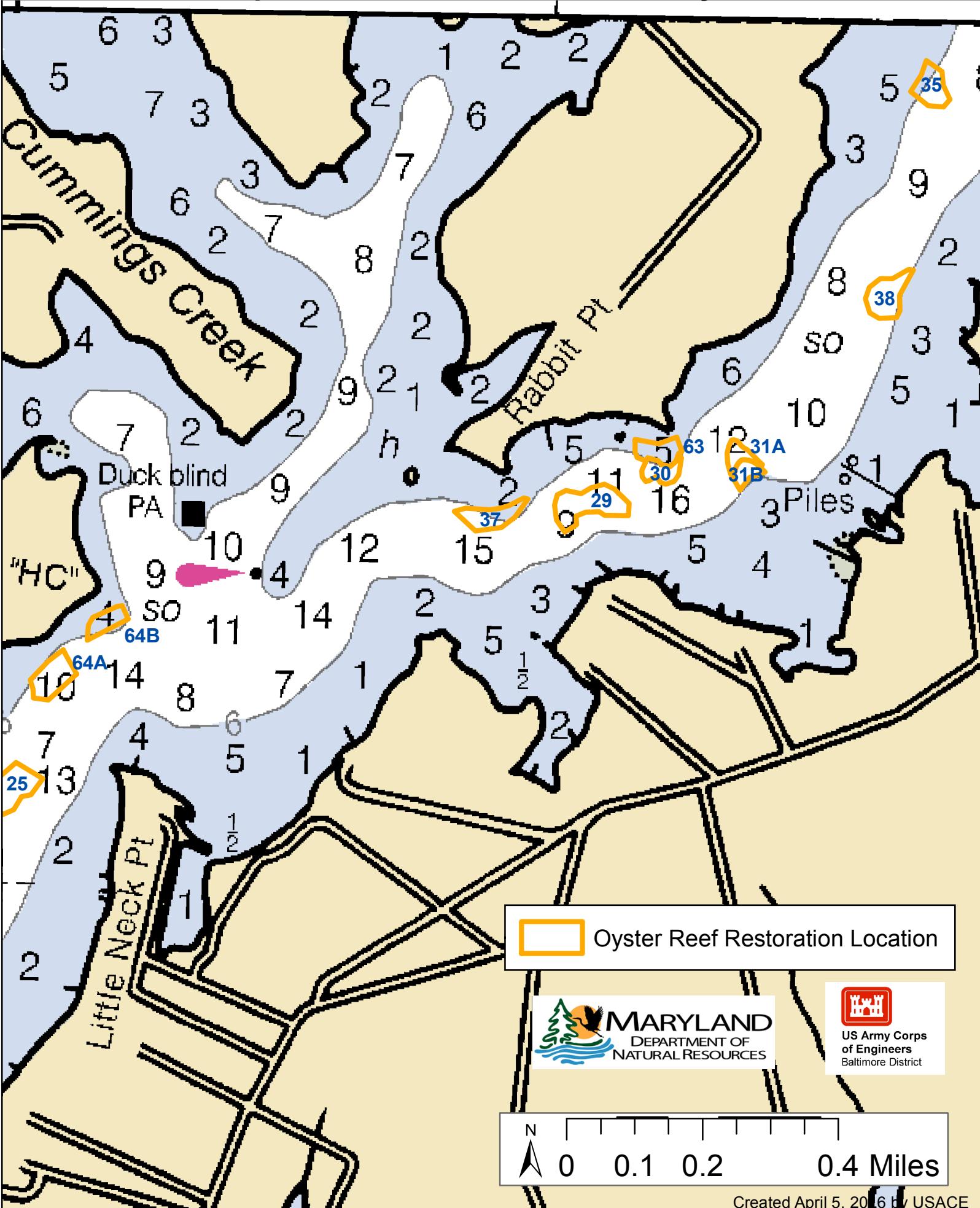
Harris Creek Oyster Restoration : Map 2

Notice: water depths are shallower than currently shown on charts



Harris Creek Oyster Restoration : Map 3

Notice: water depths are shallower than currently shown on charts



Harris Creek Substrate Reef Coordinates (NAD 1983 UTM Zone 18N, Decimal degrees)					
Restoration Type	Site ID	Site Number	Area (ac)	Longitude	Latitude
Alternate Substrate and Seed	AltSub_01	1	1.43	-76.3185	38.7119
	AltSub_01	1	1.43	-76.3193	38.7118
	AltSub_01	1	1.43	-76.3194	38.7120
	AltSub_01	1	1.43	-76.3191	38.7122
	AltSub_01	1	1.43	-76.3191	38.7122
	AltSub_01	1	1.43	-76.3191	38.7129
	AltSub_01	1	1.43	-76.3192	38.7132
	AltSub_01	1	1.43	-76.3190	38.7132
	AltSub_01	1	1.43	-76.3185	38.7119
Alternate Substrate and Seed	AltSub_03	3	5.33	-76.3158	38.7162
	AltSub_03	3	5.33	-76.3162	38.7169
	AltSub_03	3	5.33	-76.3165	38.7171
	AltSub_03	3	5.33	-76.3157	38.7172
	AltSub_03	3	5.33	-76.3152	38.7173
	AltSub_03	3	5.33	-76.3148	38.7171
	AltSub_03	3	5.33	-76.3142	38.7170
	AltSub_03	3	5.33	-76.3138	38.7167
	AltSub_03	3	5.33	-76.3133	38.7164
	AltSub_03	3	5.33	-76.3134	38.7161
	AltSub_03	3	5.33	-76.3139	38.7161
	AltSub_03	3	5.33	-76.3150	38.7162
	AltSub_03	3	5.33	-76.3153	38.7164
	AltSub_03	3	5.33	-76.3156	38.7165
	AltSub_03	3	5.33	-76.3158	38.7162
Alternate Substrate and Seed	AltSub_16B	16B	0.56	-76.3107	38.7461
	AltSub_16B	16B	0.56	-76.3107	38.7461
	AltSub_16B	16B	0.56	-76.3105	38.7460
	AltSub_16B	16B	0.56	-76.3104	38.7459
	AltSub_16B	16B	0.56	-76.3105	38.7457
	AltSub_16B	16B	0.56	-76.3107	38.7456
	AltSub_16B	16B	0.56	-76.3108	38.7456
	AltSub_16B	16B	0.56	-76.3109	38.7458
	AltSub_16B	16B	0.56	-76.3112	38.7462
	AltSub_16B	16B	0.56	-76.3108	38.7462
	AltSub_16B	16B	0.56	-76.3108	38.7462
	AltSub_16B	16B	0.56	-76.3107	38.7461
Alternate Substrate and Seed	AltSub_16A	16A	1.11	-76.3107	38.7456
	AltSub_16A	16A	1.11	-76.3105	38.7457
	AltSub_16A	16A	1.11	-76.3104	38.7459
	AltSub_16A	16A	1.11	-76.3105	38.7460
	AltSub_16A	16A	1.11	-76.3107	38.7461
	AltSub_16A	16A	1.11	-76.3107	38.7461

Harris Creek Substrate Reef Coordinates (NAD 1983 UTM Zone 18N, Decimal degrees)					
Restoration Type	Site ID	Site Number	Area (ac)	Longitude	Latitude
	AltSub_16A	16A	1.11	-76.3104	38.7462
	AltSub_16A	16A	1.11	-76.3103	38.7462
	AltSub_16A	16A	1.11	-76.3101	38.7462
	AltSub_16A	16A	1.11	-76.3099	38.7462
	AltSub_16A	16A	1.11	-76.3098	38.7460
	AltSub_16A	16A	1.11	-76.3097	38.7459
	AltSub_16A	16A	1.11	-76.3096	38.7458
	AltSub_16A	16A	1.11	-76.3096	38.7457
	AltSub_16A	16A	1.11	-76.3097	38.7456
	AltSub_16A	16A	1.11	-76.3099	38.7456
	AltSub_16A	16A	1.11	-76.3100	38.7456
	AltSub_16A	16A	1.11	-76.3101	38.7456
	AltSub_16A	16A	1.11	-76.3103	38.7456
	AltSub_16A	16A	1.11	-76.3105	38.7456
	AltSub_16A	16A	1.11	-76.3107	38.7456
Alternate Substrate and Seed	AltSub_19A	19A	2.79	-76.3109	38.7537
	AltSub_19A	19A	2.79	-76.3106	38.7540
	AltSub_19A	19A	2.79	-76.3104	38.7543
	AltSub_19A	19A	2.79	-76.3106	38.7545
	AltSub_19A	19A	2.79	-76.3107	38.7546
	AltSub_19A	19A	2.79	-76.3110	38.7547
	AltSub_19A	19A	2.79	-76.3114	38.7550
	AltSub_19A	19A	2.79	-76.3114	38.7551
	AltSub_19A	19A	2.79	-76.3111	38.7552
	AltSub_19A	19A	2.79	-76.3108	38.7552
	AltSub_19A	19A	2.79	-76.3097	38.7547
	AltSub_19A	19A	2.79	-76.3101	38.7541
	AltSub_19A	19A	2.79	-76.3104	38.7538
	AltSub_19A	19A	2.79	-76.3106	38.7536
	AltSub_19A	19A	2.79	-76.3109	38.7536
	AltSub_19A	19A	2.79	-76.3109	38.7537
Alternate Substrate and Seed	AltSub_19B	19B	1.72	-76.3109	38.7537
	AltSub_19B	19B	1.72	-76.3110	38.7538
	AltSub_19B	19B	1.72	-76.3111	38.7541
	AltSub_19B	19B	1.72	-76.3113	38.7544
	AltSub_19B	19B	1.72	-76.3117	38.7550
	AltSub_19B	19B	1.72	-76.3114	38.7551
	AltSub_19B	19B	1.72	-76.3114	38.7550
	AltSub_19B	19B	1.72	-76.3110	38.7547
	AltSub_19B	19B	1.72	-76.3107	38.7546
	AltSub_19B	19B	1.72	-76.3106	38.7545
	AltSub_19B	19B	1.72	-76.3104	38.7543

Harris Creek Substrate Reef Coordinates (NAD 1983 UTM Zone 18N, Decimal degrees)					
Restoration Type	Site ID	Site Number	Area (ac)	Longitude	Latitude
	AltSub_19B	19B	1.72	-76.3106	38.7540
	AltSub_19B	19B	1.72	-76.3109	38.7537
Alternate Substrate and Seed	AltSub_20A	20A	2.35	-76.3101	38.7572
	AltSub_20A	20A	2.35	-76.3109	38.7577
	AltSub_20A	20A	2.35	-76.3098	38.7581
	AltSub_20A	20A	2.35	-76.3093	38.7581
	AltSub_20A	20A	2.35	-76.3089	38.7579
	AltSub_20A	20A	2.35	-76.3089	38.7577
	AltSub_20A	20A	2.35	-76.3091	38.7576
	AltSub_20A	20A	2.35	-76.3095	38.7576
	AltSub_20A	20A	2.35	-76.3101	38.7572
	AltSub_20A	20A	2.35	-76.3101	38.7572
Alternate Substrate and Seed	AltSub_20B	20B	2.02	-76.3101	38.7572
	AltSub_20B	20B	2.02	-76.3101	38.7571
	AltSub_20B	20B	2.02	-76.3102	38.7567
	AltSub_20B	20B	2.02	-76.3107	38.7564
	AltSub_20B	20B	2.02	-76.3111	38.7562
	AltSub_20B	20B	2.02	-76.3112	38.7563
	AltSub_20B	20B	2.02	-76.3106	38.7568
	AltSub_20B	20B	2.02	-76.3106	38.7571
	AltSub_20B	20B	2.02	-76.3109	38.7573
	AltSub_20B	20B	2.02	-76.3114	38.7573
	AltSub_20B	20B	2.02	-76.3117	38.7571
	AltSub_20B	20B	2.02	-76.3118	38.7572
	AltSub_20B	20B	2.02	-76.3118	38.7573
	AltSub_20B	20B	2.02	-76.3110	38.7577
	AltSub_20B	20B	2.02	-76.3109	38.7577
	AltSub_20B	20B	2.02	-76.3101	38.7572
Alternate Substrate and Seed	AltSub_22A	22A	1.39	-76.3000	38.7632
	AltSub_22A	22A	1.39	-76.3002	38.7631
	AltSub_22A	22A	1.39	-76.3003	38.7629
	AltSub_22A	22A	1.39	-76.3005	38.7629
	AltSub_22A	22A	1.39	-76.3006	38.7628
	AltSub_22A	22A	1.39	-76.3006	38.7627
	AltSub_22A	22A	1.39	-76.3007	38.7627
	AltSub_22A	22A	1.39	-76.3009	38.7624
	AltSub_22A	22A	1.39	-76.3012	38.7622
	AltSub_22A	22A	1.39	-76.3014	38.7623
	AltSub_22A	22A	1.39	-76.3016	38.7623
	AltSub_22A	22A	1.39	-76.3018	38.7621
	AltSub_22A	22A	1.39	-76.3019	38.7619
	AltSub_22A	22A	1.39	-76.3019	38.7617

Harris Creek Substrate Reef Coordinates (NAD 1983 UTM Zone 18N, Decimal degrees)					
Restoration Type	Site ID	Site Number	Area (ac)	Longitude	Latitude
	AltSub_22A	22A	1.39	-76.3019	38.7614
	AltSub_22A	22A	1.39	-76.3019	38.7613
	AltSub_22A	22A	1.39	-76.3022	38.7612
	AltSub_22A	22A	1.39	-76.3021	38.7614
	AltSub_22A	22A	1.39	-76.3021	38.7615
	AltSub_22A	22A	1.39	-76.3021	38.7617
	AltSub_22A	22A	1.39	-76.3021	38.7620
	AltSub_22A	22A	1.39	-76.3020	38.7621
	AltSub_22A	22A	1.39	-76.3019	38.7623
	AltSub_22A	22A	1.39	-76.3016	38.7625
	AltSub_22A	22A	1.39	-76.3013	38.7624
	AltSub_22A	22A	1.39	-76.3010	38.7625
	AltSub_22A	22A	1.39	-76.3009	38.7628
	AltSub_22A	22A	1.39	-76.3003	38.7633
	AltSub_22A	22A	1.39	-76.3000	38.7632
Alternate Substrate and Seed	AltSub_22B	22B	5.69	-76.3019	38.7613
	AltSub_22B	22B	5.69	-76.3019	38.7614
	AltSub_22B	22B	5.69	-76.3019	38.7617
	AltSub_22B	22B	5.69	-76.3019	38.7619
	AltSub_22B	22B	5.69	-76.3018	38.7621
	AltSub_22B	22B	5.69	-76.3016	38.7623
	AltSub_22B	22B	5.69	-76.3014	38.7623
	AltSub_22B	22B	5.69	-76.3012	38.7622
	AltSub_22B	22B	5.69	-76.3009	38.7624
	AltSub_22B	22B	5.69	-76.3007	38.7627
	AltSub_22B	22B	5.69	-76.3006	38.7628
	AltSub_22B	22B	5.69	-76.3003	38.7629
	AltSub_22B	22B	5.69	-76.3002	38.7631
	AltSub_22B	22B	5.69	-76.3000	38.7632
	AltSub_22B	22B	5.69	-76.2992	38.7631
	AltSub_22B	22B	5.69	-76.3007	38.7621
	AltSub_22B	22B	5.69	-76.3010	38.7618
	AltSub_22B	22B	5.69	-76.3013	38.7613
	AltSub_22B	22B	5.69	-76.3014	38.7609
	AltSub_22B	22B	5.69	-76.3016	38.7605
	AltSub_22B	22B	5.69	-76.3016	38.7599
	AltSub_22B	22B	5.69	-76.3021	38.7600
	AltSub_22B	22B	5.69	-76.3021	38.7603
	AltSub_22B	22B	5.69	-76.3020	38.7609
	AltSub_22B	22B	5.69	-76.3019	38.7611
	AltSub_22B	22B	5.69	-76.3019	38.7613
Alternate Substrate and Seed	AltSub_25	25	2.46	-76.2976	38.7667

Harris Creek Substrate Reef Coordinates (NAD 1983 UTM Zone 18N, Decimal degrees)					
Restoration Type	Site ID	Site Number	Area (ac)	Longitude	Latitude
	AltSub_25	25	2.46	-76.2978	38.7664
	AltSub_25	25	2.46	-76.2981	38.7663
	AltSub_25	25	2.46	-76.2982	38.7664
	AltSub_25	25	2.46	-76.2986	38.7663
	AltSub_25	25	2.46	-76.2987	38.7662
	AltSub_25	25	2.46	-76.2990	38.7662
	AltSub_25	25	2.46	-76.2990	38.7664
	AltSub_25	25	2.46	-76.2988	38.7666
	AltSub_25	25	2.46	-76.2983	38.7666
	AltSub_25	25	2.46	-76.2982	38.7667
	AltSub_25	25	2.46	-76.2982	38.7668
	AltSub_25	25	2.46	-76.2983	38.7670
	AltSub_25	25	2.46	-76.2977	38.7674
	AltSub_25	25	2.46	-76.2970	38.7671
	AltSub_25	25	2.46	-76.2973	38.7667
	AltSub_25	25	2.46	-76.2976	38.7667
Alternate Substrate and Seed	AltSub_29	29	2.71	-76.2815	38.7734
	AltSub_29	29	2.71	-76.2811	38.7731
	AltSub_29	29	2.71	-76.2811	38.7729
	AltSub_29	29	2.71	-76.2818	38.7729
	AltSub_29	29	2.71	-76.2819	38.7729
	AltSub_29	29	2.71	-76.2823	38.7729
	AltSub_29	29	2.71	-76.2825	38.7728
	AltSub_29	29	2.71	-76.2825	38.7726
	AltSub_29	29	2.71	-76.2828	38.7725
	AltSub_29	29	2.71	-76.2831	38.7728
	AltSub_29	29	2.71	-76.2831	38.7731
	AltSub_29	29	2.71	-76.2831	38.7733
	AltSub_29	29	2.71	-76.2828	38.7734
	AltSub_29	29	2.71	-76.2824	38.7733
	AltSub_29	29	2.71	-76.2821	38.7734
	AltSub_29	29	2.71	-76.2818	38.7735
	AltSub_29	29	2.71	-76.2815	38.7734
Alternate Substrate and Seed	AltSub_30	30	0.97	-76.2806	38.7740
	AltSub_30	30	0.97	-76.2806	38.7741
	AltSub_30	30	0.97	-76.2803	38.7741
	AltSub_30	30	0.97	-76.2802	38.7740
	AltSub_30	30	0.97	-76.2800	38.7739
	AltSub_30	30	0.97	-76.2798	38.7740
	AltSub_30	30	0.97	-76.2798	38.7742
	AltSub_30	30	0.97	-76.2797	38.7741
	AltSub_30	30	0.97	-76.2798	38.7738

Harris Creek Substrate Reef Coordinates (NAD 1983 UTM Zone 18N, Decimal degrees)					
Restoration Type	Site ID	Site Number	Area (ac)	Longitude	Latitude
	AltSub_30	30	0.97	-76.2799	38.7736
	AltSub_30	30	0.97	-76.2801	38.7735
	AltSub_30	30	0.97	-76.2803	38.7736
	AltSub_30	30	0.97	-76.2804	38.7737
	AltSub_30	30	0.97	-76.2806	38.7736
	AltSub_30	30	0.97	-76.2807	38.7736
	AltSub_30	30	0.97	-76.2807	38.7737
	AltSub_30	30	0.97	-76.2808	38.7738
	AltSub_30	30	0.97	-76.2806	38.7740
Alternate Substrate and Seed	AltSub_31A	31A	0.73	-76.2776	38.7740
	AltSub_31A	31A	0.73	-76.2777	38.7740
	AltSub_31A	31A	0.73	-76.2778	38.7741
	AltSub_31A	31A	0.73	-76.2779	38.7741
	AltSub_31A	31A	0.73	-76.2779	38.7741
	AltSub_31A	31A	0.73	-76.2780	38.7741
	AltSub_31A	31A	0.73	-76.2781	38.7741
	AltSub_31A	31A	0.73	-76.2781	38.7740
	AltSub_31A	31A	0.73	-76.2782	38.7739
	AltSub_31A	31A	0.73	-76.2782	38.7739
	AltSub_31A	31A	0.73	-76.2782	38.7738
	AltSub_31A	31A	0.73	-76.2783	38.7737
	AltSub_31A	31A	0.73	-76.2783	38.7738
	AltSub_31A	31A	0.73	-76.2784	38.7740
	AltSub_31A	31A	0.73	-76.2785	38.7742
	AltSub_31A	31A	0.73	-76.2784	38.7744
	AltSub_31A	31A	0.73	-76.2783	38.7745
	AltSub_31A	31A	0.73	-76.2783	38.7745
	AltSub_31A	31A	0.73	-76.2782	38.7745
	AltSub_31A	31A	0.73	-76.2782	38.7745
	AltSub_31A	31A	0.73	-76.2781	38.7744
	AltSub_31A	31A	0.73	-76.2780	38.7743
	AltSub_31A	31A	0.73	-76.2779	38.7743
	AltSub_31A	31A	0.73	-76.2778	38.7743
	AltSub_31A	31A	0.73	-76.2776	38.7741
	AltSub_31A	31A	0.73	-76.2775	38.7740
	AltSub_31A	31A	0.73	-76.2775	38.7739
	AltSub_31A	31A	0.73	-76.2776	38.7740
Alternate Substrate and Seed	AltSub_31B	31B	0.68	-76.2776	38.7740
	AltSub_31B	31B	0.68	-76.2774	38.7738
	AltSub_31B	31B	0.68	-76.2778	38.7737
	AltSub_31B	31B	0.68	-76.2781	38.7734
	AltSub_31B	31B	0.68	-76.2783	38.7737

Harris Creek Substrate Reef Coordinates (NAD 1983 UTM Zone 18N, Decimal degrees)					
Restoration Type	Site ID	Site Number	Area (ac)	Longitude	Latitude
	AltSub_31B	31B	0.68	-76.2782	38.7738
	AltSub_31B	31B	0.68	-76.2782	38.7739
	AltSub_31B	31B	0.68	-76.2782	38.7739
	AltSub_31B	31B	0.68	-76.2781	38.7740
	AltSub_31B	31B	0.68	-76.2781	38.7741
	AltSub_31B	31B	0.68	-76.2780	38.7741
	AltSub_31B	31B	0.68	-76.2779	38.7741
	AltSub_31B	31B	0.68	-76.2779	38.7741
	AltSub_31B	31B	0.68	-76.2778	38.7741
	AltSub_31B	31B	0.68	-76.2777	38.7740
	AltSub_31B	31B	0.68	-76.2776	38.7740
Alternate Substrate and Seed	AltSub_32	32	3.28	-76.3111	38.7562
	AltSub_32	32	3.28	-76.3113	38.7561
	AltSub_32	32	3.28	-76.3117	38.7563
	AltSub_32	32	3.28	-76.3122	38.7568
	AltSub_32	32	3.28	-76.3124	38.7569
	AltSub_32	32	3.28	-76.3126	38.7570
	AltSub_32	32	3.28	-76.3124	38.7572
	AltSub_32	32	3.28	-76.3122	38.7572
	AltSub_32	32	3.28	-76.3120	38.7572
	AltSub_32	32	3.28	-76.3118	38.7572
	AltSub_32	32	3.28	-76.3117	38.7571
	AltSub_32	32	3.28	-76.3114	38.7573
	AltSub_32	32	3.28	-76.3109	38.7573
	AltSub_32	32	3.28	-76.3106	38.7571
	AltSub_32	32	3.28	-76.3106	38.7568
	AltSub_32	32	3.28	-76.3112	38.7563
	AltSub_32	32	3.28	-76.3111	38.7562
Alternate Substrate and Seed	AltSub_33	33	7.01	-76.3194	38.7120
	AltSub_33	33	7.01	-76.3193	38.7118
	AltSub_33	33	7.01	-76.3192	38.7115
	AltSub_33	33	7.01	-76.3187	38.7106
	AltSub_33	33	7.01	-76.3190	38.7105
	AltSub_33	33	7.01	-76.3192	38.7101
	AltSub_33	33	7.01	-76.3204	38.7100
	AltSub_33	33	7.01	-76.3204	38.7100
	AltSub_33	33	7.01	-76.3207	38.7111
	AltSub_33	33	7.01	-76.3206	38.7114
	AltSub_33	33	7.01	-76.3205	38.7122
	AltSub_33	33	7.01	-76.3203	38.7121
	AltSub_33	33	7.01	-76.3198	38.7118
	AltSub_33	33	7.01	-76.3194	38.7120

Harris Creek Substrate Reef Coordinates (NAD 1983 UTM Zone 18N, Decimal degrees)					
Restoration Type	Site ID	Site Number	Area (ac)	Longitude	Latitude
Alternate Substrate and Seed	AltSub_34	34	25.48	-76.3064	38.7145
	AltSub_34	34	25.48	-76.3068	38.7147
	AltSub_34	34	25.48	-76.3069	38.7152
	AltSub_34	34	25.48	-76.3066	38.7152
	AltSub_34	34	25.48	-76.3061	38.7154
	AltSub_34	34	25.48	-76.3060	38.7154
	AltSub_34	34	25.48	-76.3063	38.7166
	AltSub_34	34	25.48	-76.3064	38.7171
	AltSub_34	34	25.48	-76.3064	38.7173
	AltSub_34	34	25.48	-76.3068	38.7177
	AltSub_34	34	25.48	-76.3065	38.7180
	AltSub_34	34	25.48	-76.3062	38.7185
	AltSub_34	34	25.48	-76.3047	38.7185
	AltSub_34	34	25.48	-76.3047	38.7185
	AltSub_34	34	25.48	-76.3044	38.7188
	AltSub_34	34	25.48	-76.3045	38.7203
	AltSub_34	34	25.48	-76.3046	38.7206
	AltSub_34	34	25.48	-76.3036	38.7203
	AltSub_34	34	25.48	-76.3035	38.7192
	AltSub_34	34	25.48	-76.3036	38.7183
	AltSub_34	34	25.48	-76.3038	38.7174
	AltSub_34	34	25.48	-76.3040	38.7169
	AltSub_34	34	25.48	-76.3041	38.7165
	AltSub_34	34	25.48	-76.3044	38.7158
	AltSub_34	34	25.48	-76.3047	38.7152
	AltSub_34	34	25.48	-76.3050	38.7145
	AltSub_34	34	25.48	-76.3052	38.7145
	AltSub_34	34	25.48	-76.3053	38.7145
	AltSub_34	34	25.48	-76.3064	38.7145
Alternate Substrate and Seed	AltSub_35	35	1.45	-76.2725	38.7818
	AltSub_35	35	1.45	-76.2727	38.7817
	AltSub_35	35	1.45	-76.2731	38.7817
	AltSub_35	35	1.45	-76.2736	38.7820
	AltSub_35	35	1.45	-76.2733	38.7824
	AltSub_35	35	1.45	-76.2732	38.7827
	AltSub_35	35	1.45	-76.2727	38.7824
	AltSub_35	35	1.45	-76.2727	38.7822
	AltSub_35	35	1.45	-76.2725	38.7818
Alternate Substrate and Seed	AltSub_36	36	2.02	-76.3011	38.7652
	AltSub_36	36	2.02	-76.3020	38.7648
	AltSub_36	36	2.02	-76.3022	38.7649
	AltSub_36	36	2.02	-76.3024	38.7651

Harris Creek Substrate Reef Coordinates (NAD 1983 UTM Zone 18N, Decimal degrees)					
Restoration Type	Site ID	Site Number	Area (ac)	Longitude	Latitude
	AltSub_36	36	2.02	-76.3024	38.7656
	AltSub_36	36	2.02	-76.3020	38.7658
	AltSub_36	36	2.02	-76.3015	38.7658
	AltSub_36	36	2.02	-76.3015	38.7656
	AltSub_36	36	2.02	-76.3013	38.7654
	AltSub_36	36	2.02	-76.3011	38.7652
Alternate Substrate and Seed	AltSub_37	37	1.55	-76.2839	38.7732
	AltSub_37	37	1.55	-76.2842	38.7728
	AltSub_37	37	1.55	-76.2846	38.7726
	AltSub_37	37	1.55	-76.2853	38.7725
	AltSub_37	37	1.55	-76.2859	38.7729
	AltSub_37	37	1.55	-76.2856	38.7730
	AltSub_37	37	1.55	-76.2849	38.7729
	AltSub_37	37	1.55	-76.2846	38.7730
	AltSub_37	37	1.55	-76.2844	38.7730
	AltSub_37	37	1.55	-76.2841	38.7732
	AltSub_37	37	1.55	-76.2840	38.7732
	AltSub_37	37	1.55	-76.2839	38.7732
Alternate Substrate and Seed	AltSub_38	38	1.84	-76.2739	38.7772
	AltSub_38	38	1.84	-76.2743	38.7771
	AltSub_38	38	1.84	-76.2746	38.7773
	AltSub_38	38	1.84	-76.2747	38.7776
	AltSub_38	38	1.84	-76.2746	38.7778
	AltSub_38	38	1.84	-76.2743	38.7780
	AltSub_38	38	1.84	-76.2740	38.7780
	AltSub_38	38	1.84	-76.2736	38.7782
	AltSub_38	38	1.84	-76.2734	38.7782
	AltSub_38	38	1.84	-76.2738	38.7776
	AltSub_38	38	1.84	-76.2738	38.7773
	AltSub_38	38	1.84	-76.2739	38.7772
Alternate Substrate and Seed	AltSub_40	40	6.93	-76.3076	38.7267
	AltSub_40	40	6.93	-76.3077	38.7263
	AltSub_40	40	6.93	-76.3077	38.7262
	AltSub_40	40	6.93	-76.3076	38.7259
	AltSub_40	40	6.93	-76.3080	38.7259
	AltSub_40	40	6.93	-76.3086	38.7261
	AltSub_40	40	6.93	-76.3097	38.7264
	AltSub_40	40	6.93	-76.3103	38.7266
	AltSub_40	40	6.93	-76.3107	38.7266
	AltSub_40	40	6.93	-76.3109	38.7269
	AltSub_40	40	6.93	-76.3109	38.7271
	AltSub_40	40	6.93	-76.3107	38.7273

Harris Creek Substrate Reef Coordinates (NAD 1983 UTM Zone 18N, Decimal degrees)					
Restoration Type	Site ID	Site Number	Area (ac)	Longitude	Latitude
	AltSub_40	40	6.93	-76.3104	38.7275
	AltSub_40	40	6.93	-76.3092	38.7272
	AltSub_40	40	6.93	-76.3079	38.7269
	AltSub_40	40	6.93	-76.3076	38.7267
Alternate Substrate and Seed	AltSub_41	41	7.72	-76.3022	38.7368
	AltSub_41	41	7.72	-76.3017	38.7366
	AltSub_41	41	7.72	-76.3017	38.7366
	AltSub_41	41	7.72	-76.3016	38.7364
	AltSub_41	41	7.72	-76.3012	38.7362
	AltSub_41	41	7.72	-76.3009	38.7361
	AltSub_41	41	7.72	-76.3009	38.7360
	AltSub_41	41	7.72	-76.3015	38.7360
	AltSub_41	41	7.72	-76.3017	38.7351
	AltSub_41	41	7.72	-76.3021	38.7349
	AltSub_41	41	7.72	-76.3027	38.7348
	AltSub_41	41	7.72	-76.3031	38.7348
	AltSub_41	41	7.72	-76.3035	38.7350
	AltSub_41	41	7.72	-76.3036	38.7359
	AltSub_41	41	7.72	-76.3026	38.7365
	AltSub_41	41	7.72	-76.3023	38.7368
	AltSub_41	41	7.72	-76.3022	38.7368
	AltSub_41	41	7.72	-76.3022	38.7368
Alternate Substrate and Seed	AltSub_43A	43A	1.02	-76.3012	38.7447
	AltSub_43A	43A	1.02	-76.3019	38.7447
	AltSub_43A	43A	1.02	-76.3019	38.7452
	AltSub_43A	43A	1.02	-76.3012	38.7453
	AltSub_43A	43A	1.02	-76.3012	38.7447
Alternate Substrate and Seed	AltSub_43B	43B	1.02	-76.3011	38.7441
	AltSub_43B	43B	1.02	-76.3018	38.7441
	AltSub_43B	43B	1.02	-76.3018	38.7446
	AltSub_43B	43B	1.02	-76.3011	38.7447
	AltSub_43B	43B	1.02	-76.3011	38.7441
Alternate Substrate and Seed	AltSub_44	44	1.48	-76.3078	38.7450
	AltSub_44	44	1.48	-76.3079	38.7453
	AltSub_44	44	1.48	-76.3080	38.7456
	AltSub_44	44	1.48	-76.3080	38.7458
	AltSub_44	44	1.48	-76.3077	38.7458
	AltSub_44	44	1.48	-76.3074	38.7459
	AltSub_44	44	1.48	-76.3075	38.7458
	AltSub_44	44	1.48	-76.3071	38.7452
	AltSub_44	44	1.48	-76.3070	38.7451
	AltSub_44	44	1.48	-76.3069	38.7450

Harris Creek Substrate Reef Coordinates (NAD 1983 UTM Zone 18N, Decimal degrees)					
Restoration Type	Site ID	Site Number	Area (ac)	Longitude	Latitude
	AltSub_44	44	1.48	-76.3070	38.7449
	AltSub_44	44	1.48	-76.3074	38.7449
	AltSub_44	44	1.48	-76.3076	38.7449
	AltSub_44	44	1.48	-76.3078	38.7450
Alternate Substrate and Seed	AltSub_45	45	2.13	-76.3074	38.7459
	AltSub_45	45	2.13	-76.3077	38.7458
	AltSub_45	45	2.13	-76.3080	38.7458
	AltSub_45	45	2.13	-76.3085	38.7458
	AltSub_45	45	2.13	-76.3079	38.7461
	AltSub_45	45	2.13	-76.3078	38.7462
	AltSub_45	45	2.13	-76.3075	38.7464
	AltSub_45	45	2.13	-76.3073	38.7465
	AltSub_45	45	2.13	-76.3071	38.7470
	AltSub_45	45	2.13	-76.3067	38.7470
	AltSub_45	45	2.13	-76.3067	38.7465
	AltSub_45	45	2.13	-76.3068	38.7461
	AltSub_45	45	2.13	-76.3074	38.7459
Alternate Substrate and Seed	AltSub_48	48	4.18	-76.3049	38.7645
	AltSub_48	48	4.18	-76.3056	38.7644
	AltSub_48	48	4.18	-76.3058	38.7644
	AltSub_48	48	4.18	-76.3060	38.7643
	AltSub_48	48	4.18	-76.3062	38.7643
	AltSub_48	48	4.18	-76.3063	38.7644
	AltSub_48	48	4.18	-76.3061	38.7647
	AltSub_48	48	4.18	-76.3059	38.7649
	AltSub_48	48	4.18	-76.3056	38.7651
	AltSub_48	48	4.18	-76.3055	38.7653
	AltSub_48	48	4.18	-76.3053	38.7655
	AltSub_48	48	4.18	-76.3050	38.7656
	AltSub_48	48	4.18	-76.3047	38.7657
	AltSub_48	48	4.18	-76.3043	38.7657
	AltSub_48	48	4.18	-76.3042	38.7651
	AltSub_48	48	4.18	-76.3042	38.7647
	AltSub_48	48	4.18	-76.3042	38.7646
	AltSub_48	48	4.18	-76.3049	38.7645
Alternate Substrate and Seed	AltSub_49A	49A	2.53	-76.3184	38.7089
	AltSub_49A	49A	2.53	-76.3184	38.7092
	AltSub_49A	49A	2.53	-76.3184	38.7097
	AltSub_49A	49A	2.53	-76.3183	38.7105
	AltSub_49A	49A	2.53	-76.3184	38.7106
	AltSub_49A	49A	2.53	-76.3178	38.7107
	AltSub_49A	49A	2.53	-76.3177	38.7100

Harris Creek Substrate Reef Coordinates (NAD 1983 UTM Zone 18N, Decimal degrees)					
Restoration Type	Site ID	Site Number	Area (ac)	Longitude	Latitude
	AltSub_49A	49A	2.53	-76.3178	38.7091
	AltSub_49A	49A	2.53	-76.3184	38.7089
Alternate Substrate and Seed	AltSub_49B	49B	2.57	-76.3178	38.7107
	AltSub_49B	49B	2.57	-76.3184	38.7106
	AltSub_49B	49B	2.57	-76.3187	38.7106
	AltSub_49B	49B	2.57	-76.3192	38.7115
	AltSub_49B	49B	2.57	-76.3193	38.7118
	AltSub_49B	49B	2.57	-76.3185	38.7119
	AltSub_49B	49B	2.57	-76.3184	38.7117
	AltSub_49B	49B	2.57	-76.3183	38.7115
	AltSub_49B	49B	2.57	-76.3181	38.7112
	AltSub_49B	49B	2.57	-76.3178	38.7107
Alternate Substrate and Seed	AltSub_53	53	0.96	-76.3025	38.7373
	AltSub_53	53	0.96	-76.3024	38.7370
	AltSub_53	53	0.96	-76.3024	38.7370
	AltSub_53	53	0.96	-76.3026	38.7370
	AltSub_53	53	0.96	-76.3028	38.7370
	AltSub_53	53	0.96	-76.3028	38.7374
	AltSub_53	53	0.96	-76.3029	38.7376
	AltSub_53	53	0.96	-76.3030	38.7379
	AltSub_53	53	0.96	-76.3028	38.7381
	AltSub_53	53	0.96	-76.3026	38.7381
	AltSub_53	53	0.96	-76.3025	38.7373
Alternate Substrate and Seed	AltSub_54	54	1.28	-76.3079	38.7180
	AltSub_54	54	1.28	-76.3081	38.7180
	AltSub_54	54	1.28	-76.3088	38.7177
	AltSub_54	54	1.28	-76.3088	38.7180
	AltSub_54	54	1.28	-76.3087	38.7182
	AltSub_54	54	1.28	-76.3086	38.7183
	AltSub_54	54	1.28	-76.3086	38.7184
	AltSub_54	54	1.28	-76.3084	38.7186
	AltSub_54	54	1.28	-76.3082	38.7187
	AltSub_54	54	1.28	-76.3081	38.7186
	AltSub_54	54	1.28	-76.3080	38.7185
	AltSub_54	54	1.28	-76.3078	38.7185
	AltSub_54	54	1.28	-76.3078	38.7184
	AltSub_54	54	1.28	-76.3079	38.7180
Alternate Substrate and Seed	AltSub_55A	55A	1.13	-76.3067	38.7260
	AltSub_55A	55A	1.13	-76.3070	38.7260
	AltSub_55A	55A	1.13	-76.3072	38.7265
	AltSub_55A	55A	1.13	-76.3072	38.7268
	AltSub_55A	55A	1.13	-76.3072	38.7268

Harris Creek Substrate Reef Coordinates (NAD 1983 UTM Zone 18N, Decimal degrees)					
Restoration Type	Site ID	Site Number	Area (ac)	Longitude	Latitude
	AltSub_55A	55A	1.13	-76.3073	38.7271
	AltSub_55A	55A	1.13	-76.3071	38.7270
	AltSub_55A	55A	1.13	-76.3067	38.7270
	AltSub_55A	55A	1.13	-76.3067	38.7268
	AltSub_55A	55A	1.13	-76.3068	38.7266
	AltSub_55A	55A	1.13	-76.3065	38.7260
	AltSub_55A	55A	1.13	-76.3067	38.7260
	AltSub_55A	55A	1.13	-76.3067	38.7260
Alternate Substrate and Seed	AltSub_55B	55B	2.24	-76.3073	38.7271
	AltSub_55B	55B	2.24	-76.3072	38.7268
	AltSub_55B	55B	2.24	-76.3072	38.7268
	AltSub_55B	55B	2.24	-76.3076	38.7268
	AltSub_55B	55B	2.24	-76.3076	38.7267
	AltSub_55B	55B	2.24	-76.3079	38.7269
	AltSub_55B	55B	2.24	-76.3080	38.7271
	AltSub_55B	55B	2.24	-76.3080	38.7274
	AltSub_55B	55B	2.24	-76.3081	38.7283
	AltSub_55B	55B	2.24	-76.3080	38.7284
	AltSub_55B	55B	2.24	-76.3078	38.7284
	AltSub_55B	55B	2.24	-76.3077	38.7283
	AltSub_55B	55B	2.24	-76.3075	38.7281
	AltSub_55B	55B	2.24	-76.3075	38.7280
	AltSub_55B	55B	2.24	-76.3075	38.7278
	AltSub_55B	55B	2.24	-76.3074	38.7273
	AltSub_55B	55B	2.24	-76.3074	38.7272
	AltSub_55B	55B	2.24	-76.3073	38.7271
Alternate Substrate and Seed	AltSub_57A	57A	3.13	-76.3028	38.7374
	AltSub_57A	57A	3.13	-76.3028	38.7370
	AltSub_57A	57A	3.13	-76.3035	38.7371
	AltSub_57A	57A	3.13	-76.3040	38.7373
	AltSub_57A	57A	3.13	-76.3042	38.7379
	AltSub_57A	57A	3.13	-76.3039	38.7385
	AltSub_57A	57A	3.13	-76.3034	38.7389
	AltSub_57A	57A	3.13	-76.3025	38.7390
	AltSub_57A	57A	3.13	-76.3035	38.7385
	AltSub_57A	57A	3.13	-76.3036	38.7379
	AltSub_57A	57A	3.13	-76.3028	38.7374
Alternate Substrate and Seed	AltSub_57B	57B	2.01	-76.3026	38.7383
	AltSub_57B	57B	2.01	-76.3026	38.7381
	AltSub_57B	57B	2.01	-76.3028	38.7381
	AltSub_57B	57B	2.01	-76.3030	38.7379
	AltSub_57B	57B	2.01	-76.3029	38.7376

Harris Creek Substrate Reef Coordinates (NAD 1983 UTM Zone 18N, Decimal degrees)					
Restoration Type	Site ID	Site Number	Area (ac)	Longitude	Latitude
	AltSub_57B	57B	2.01	-76.3028	38.7374
	AltSub_57B	57B	2.01	-76.3036	38.7379
	AltSub_57B	57B	2.01	-76.3035	38.7385
	AltSub_57B	57B	2.01	-76.3025	38.7390
	AltSub_57B	57B	2.01	-76.3026	38.7383
Alternate Substrate and Seed	AltSub_58A	58A	1.39	-76.3057	38.7389
	AltSub_58A	58A	1.39	-76.3051	38.7390
	AltSub_58A	58A	1.39	-76.3047	38.7390
	AltSub_58A	58A	1.39	-76.3046	38.7391
	AltSub_58A	58A	1.39	-76.3046	38.7392
	AltSub_58A	58A	1.39	-76.3047	38.7393
	AltSub_58A	58A	1.39	-76.3049	38.7395
	AltSub_58A	58A	1.39	-76.3051	38.7395
	AltSub_58A	58A	1.39	-76.3053	38.7397
	AltSub_58A	58A	1.39	-76.3054	38.7398
	AltSub_58A	58A	1.39	-76.3054	38.7399
	AltSub_58A	58A	1.39	-76.3054	38.7400
	AltSub_58A	58A	1.39	-76.3054	38.7401
	AltSub_58A	58A	1.39	-76.3056	38.7401
	AltSub_58A	58A	1.39	-76.3057	38.7400
	AltSub_58A	58A	1.39	-76.3059	38.7399
	AltSub_58A	58A	1.39	-76.3059	38.7400
	AltSub_58A	58A	1.39	-76.3054	38.7404
	AltSub_58A	58A	1.39	-76.3051	38.7403
	AltSub_58A	58A	1.39	-76.3050	38.7401
	AltSub_58A	58A	1.39	-76.3052	38.7398
	AltSub_58A	58A	1.39	-76.3050	38.7396
	AltSub_58A	58A	1.39	-76.3048	38.7395
	AltSub_58A	58A	1.39	-76.3045	38.7395
	AltSub_58A	58A	1.39	-76.3043	38.7392
	AltSub_58A	58A	1.39	-76.3045	38.7390
	AltSub_58A	58A	1.39	-76.3057	38.7388
	AltSub_58A	58A	1.39	-76.3057	38.7389
Alternate Substrate and Seed	AltSub_58B	58B	2.28	-76.3057	38.7389
	AltSub_58B	58B	2.28	-76.3057	38.7389
	AltSub_58B	58B	2.28	-76.3060	38.7388
	AltSub_58B	58B	2.28	-76.3061	38.7388
	AltSub_58B	58B	2.28	-76.3063	38.7388
	AltSub_58B	58B	2.28	-76.3064	38.7388
	AltSub_58B	58B	2.28	-76.3065	38.7388
	AltSub_58B	58B	2.28	-76.3063	38.7389
	AltSub_58B	58B	2.28	-76.3063	38.7389

Harris Creek Substrate Reef Coordinates (NAD 1983 UTM Zone 18N, Decimal degrees)					
Restoration Type	Site ID	Site Number	Area (ac)	Longitude	Latitude
	AltSub_58B	58B	2.28	-76.3061	38.7389
	AltSub_58B	58B	2.28	-76.3059	38.7390
	AltSub_58B	58B	2.28	-76.3058	38.7392
	AltSub_58B	58B	2.28	-76.3057	38.7392
	AltSub_58B	58B	2.28	-76.3058	38.7393
	AltSub_58B	58B	2.28	-76.3058	38.7394
	AltSub_58B	58B	2.28	-76.3058	38.7394
	AltSub_58B	58B	2.28	-76.3058	38.7396
	AltSub_58B	58B	2.28	-76.3059	38.7398
	AltSub_58B	58B	2.28	-76.3059	38.7399
	AltSub_58B	58B	2.28	-76.3059	38.7399
	AltSub_58B	58B	2.28	-76.3057	38.7400
	AltSub_58B	58B	2.28	-76.3056	38.7401
	AltSub_58B	58B	2.28	-76.3054	38.7401
	AltSub_58B	58B	2.28	-76.3054	38.7400
	AltSub_58B	58B	2.28	-76.3054	38.7399
	AltSub_58B	58B	2.28	-76.3054	38.7398
	AltSub_58B	58B	2.28	-76.3053	38.7397
	AltSub_58B	58B	2.28	-76.3051	38.7395
	AltSub_58B	58B	2.28	-76.3049	38.7395
	AltSub_58B	58B	2.28	-76.3047	38.7393
	AltSub_58B	58B	2.28	-76.3046	38.7392
	AltSub_58B	58B	2.28	-76.3046	38.7391
	AltSub_58B	58B	2.28	-76.3047	38.7390
	AltSub_58B	58B	2.28	-76.3051	38.7390
	AltSub_58B	58B	2.28	-76.3057	38.7389
Alternate Substrate and Seed	AltSub_62	62	1.59	-76.3172	38.7149
	AltSub_62	62	1.59	-76.3175	38.7156
	AltSub_62	62	1.59	-76.3173	38.7156
	AltSub_62	62	1.59	-76.3167	38.7158
	AltSub_62	62	1.59	-76.3165	38.7156
	AltSub_62	62	1.59	-76.3161	38.7154
	AltSub_62	62	1.59	-76.3170	38.7151
	AltSub_62	62	1.59	-76.3172	38.7149
Alternate Substrate and Seed	AltSub_63	63	1.24	-76.2798	38.7742
	AltSub_63	63	1.24	-76.2798	38.7740
	AltSub_63	63	1.24	-76.2800	38.7739
	AltSub_63	63	1.24	-76.2802	38.7740
	AltSub_63	63	1.24	-76.2803	38.7741
	AltSub_63	63	1.24	-76.2806	38.7741
	AltSub_63	63	1.24	-76.2806	38.7740
	AltSub_63	63	1.24	-76.2809	38.7741

Harris Creek Substrate Reef Coordinates (NAD 1983 UTM Zone 18N, Decimal degrees)					
Restoration Type	Site ID	Site Number	Area (ac)	Longitude	Latitude
	AltSub_63	63	1.24	-76.2810	38.7742
	AltSub_63	63	1.24	-76.2810	38.7745
	AltSub_63	63	1.24	-76.2810	38.7745
	AltSub_63	63	1.24	-76.2810	38.7745
	AltSub_63	63	1.24	-76.2803	38.7744
	AltSub_63	63	1.24	-76.2798	38.7745
	AltSub_63	63	1.24	-76.2797	38.7742
	AltSub_63	63	1.24	-76.2798	38.7742
Alternate Substrate and Seed	AltSub_64A	64A	1.77	-76.2961	38.7693
	AltSub_64A	64A	1.77	-76.2969	38.7687
	AltSub_64A	64A	1.77	-76.2973	38.7688
	AltSub_64A	64A	1.77	-76.2973	38.7690
	AltSub_64A	64A	1.77	-76.2974	38.7692
	AltSub_64A	64A	1.77	-76.2969	38.7696
	AltSub_64A	64A	1.77	-76.2965	38.7698
	AltSub_64A	64A	1.77	-76.2964	38.7697
	AltSub_64A	64A	1.77	-76.2961	38.7693
Alternate Substrate and Seed	AltSub_64B	64B	0.95	-76.2947	38.7705
	AltSub_64B	64B	0.95	-76.2958	38.7700
	AltSub_64B	64B	0.95	-76.2958	38.7704
	AltSub_64B	64B	0.95	-76.2957	38.7705
	AltSub_64B	64B	0.95	-76.2950	38.7708
	AltSub_64B	64B	0.95	-76.2949	38.7708
	AltSub_64B	64B	0.95	-76.2947	38.7705
Alternate Substrate and Seed	AltSub_66	66	4.00	-76.3089	38.7619
	AltSub_66	66	4.00	-76.3087	38.7612
	AltSub_66	66	4.00	-76.3098	38.7613
	AltSub_66	66	4.00	-76.3105	38.7614
	AltSub_66	66	4.00	-76.3112	38.7617
	AltSub_66	66	4.00	-76.3118	38.7621
	AltSub_66	66	4.00	-76.3117	38.7624
	AltSub_66	66	4.00	-76.3114	38.7620
	AltSub_66	66	4.00	-76.3108	38.7619
	AltSub_66	66	4.00	-76.3100	38.7620
	AltSub_66	66	4.00	-76.3094	38.7621
	AltSub_66	66	4.00	-76.3089	38.7621
	AltSub_66	66	4.00	-76.3089	38.7619
Alternate Substrate and Seed	AltSub_67	67	1.15	-76.3135	38.7590
	AltSub_67	67	1.15	-76.3139	38.7585
	AltSub_67	67	1.15	-76.3141	38.7586
	AltSub_67	67	1.15	-76.3139	38.7590
	AltSub_67	67	1.15	-76.3137	38.7594

Harris Creek Substrate Reef Coordinates (NAD 1983 UTM Zone 18N, Decimal degrees)					
Restoration Type	Site ID	Site Number	Area (ac)	Longitude	Latitude
	AltSub_67	67	1.15	-76.3138	38.7600
	AltSub_67	67	1.15	-76.3134	38.7599
	AltSub_67	67	1.15	-76.3134	38.7595
	AltSub_67	67	1.15	-76.3135	38.7590
Alternate Substrate and Seed	AltSub_68	68	5.51	-76.3184	38.7097
	AltSub_68	68	5.51	-76.3184	38.7092
	AltSub_68	68	5.51	-76.3184	38.7089
	AltSub_68	68	5.51	-76.3188	38.7088
	AltSub_68	68	5.51	-76.3199	38.7084
	AltSub_68	68	5.51	-76.3204	38.7100
	AltSub_68	68	5.51	-76.3192	38.7101
	AltSub_68	68	5.51	-76.3188	38.7098
	AltSub_68	68	5.51	-76.3184	38.7097
Alternate Substrate and Seed	AltSub_69	69	0.47	-76.3109	38.7504
	AltSub_69	69	0.47	-76.3110	38.7503
	AltSub_69	69	0.47	-76.3114	38.7503
	AltSub_69	69	0.47	-76.3113	38.7507
	AltSub_69	69	0.47	-76.3113	38.7509
	AltSub_69	69	0.47	-76.3111	38.7509
	AltSub_69	69	0.47	-76.3110	38.7507
	AltSub_69	69	0.47	-76.3109	38.7504
Alternate Substrate and Seed	AltSub_71A	71A	1.11	-76.3063	38.7189
	AltSub_71A	71A	1.11	-76.3070	38.7194
	AltSub_71A	71A	1.11	-76.3074	38.7197
	AltSub_71A	71A	1.11	-76.3063	38.7198
	AltSub_71A	71A	1.11	-76.3063	38.7189
Alternate Substrate and Seed	AltSub_71B	71B	1.82	-76.3063	38.7203
	AltSub_71B	71B	1.82	-76.3063	38.7198
	AltSub_71B	71B	1.82	-76.3074	38.7197
	AltSub_71B	71B	1.82	-76.3074	38.7204
	AltSub_71B	71B	1.82	-76.3074	38.7205
	AltSub_71B	71B	1.82	-76.3064	38.7205
	AltSub_71B	71B	1.82	-76.3064	38.7203
	AltSub_71B	71B	1.82	-76.3063	38.7203
Alternate Substrate and Seed	AltSub_71C	71C	5.96	-76.3064	38.7205
	AltSub_71C	71C	5.96	-76.3074	38.7205
	AltSub_71C	71C	5.96	-76.3074	38.7215
	AltSub_71C	71C	5.96	-76.3071	38.7216
	AltSub_71C	71C	5.96	-76.3067	38.7216
	AltSub_71C	71C	5.96	-76.3064	38.7217
	AltSub_71C	71C	5.96	-76.3059	38.7220
	AltSub_71C	71C	5.96	-76.3053	38.7222

Harris Creek Substrate Reef Coordinates (NAD 1983 UTM Zone 18N, Decimal degrees)					
Restoration Type	Site ID	Site Number	Area (ac)	Longitude	Latitude
	AltSub_71C	71C	5.96	-76.3050	38.7223
	AltSub_71C	71C	5.96	-76.3049	38.7222
	AltSub_71C	71C	5.96	-76.3046	38.7221
	AltSub_71C	71C	5.96	-76.3047	38.7217
	AltSub_71C	71C	5.96	-76.3047	38.7215
	AltSub_71C	71C	5.96	-76.3049	38.7216
	AltSub_71C	71C	5.96	-76.3051	38.7216
	AltSub_71C	71C	5.96	-76.3053	38.7215
	AltSub_71C	71C	5.96	-76.3056	38.7213
	AltSub_71C	71C	5.96	-76.3057	38.7212
	AltSub_71C	71C	5.96	-76.3059	38.7212
	AltSub_71C	71C	5.96	-76.3063	38.7208
	AltSub_71C	71C	5.96	-76.3064	38.7206
	AltSub_71C	71C	5.96	-76.3064	38.7205
Alternate Substrate and Seed	AltSub_76	76	5.04	-76.3157	38.7209
	AltSub_76	76	5.04	-76.3157	38.7209
	AltSub_76	76	5.04	-76.3157	38.7209
	AltSub_76	76	5.04	-76.3161	38.7206
	AltSub_76	76	5.04	-76.3163	38.7211
	AltSub_76	76	5.04	-76.3161	38.7221
	AltSub_76	76	5.04	-76.3160	38.7224
	AltSub_76	76	5.04	-76.3163	38.7229
	AltSub_76	76	5.04	-76.3163	38.7229
	AltSub_76	76	5.04	-76.3161	38.7232
	AltSub_76	76	5.04	-76.3156	38.7230
	AltSub_76	76	5.04	-76.3151	38.7224
	AltSub_76	76	5.04	-76.3150	38.7219
	AltSub_76	76	5.04	-76.3151	38.7216
	AltSub_76	76	5.04	-76.3154	38.7210
	AltSub_76	76	5.04	-76.3157	38.7209
	AltSub_76	76	5.04	-76.3157	38.7209
Alternate Substrate and Seed	AltSub_77	77	6.62	-76.3162	38.7169
	AltSub_77	77	6.62	-76.3170	38.7167
	AltSub_77	77	6.62	-76.3172	38.7167
	AltSub_77	77	6.62	-76.3175	38.7170
	AltSub_77	77	6.62	-76.3179	38.7171
	AltSub_77	77	6.62	-76.3179	38.7171
	AltSub_77	77	6.62	-76.3185	38.7172
	AltSub_77	77	6.62	-76.3186	38.7172
	AltSub_77	77	6.62	-76.3186	38.7172
	AltSub_77	77	6.62	-76.3190	38.7174
	AltSub_77	77	6.62	-76.3193	38.7170

Harris Creek Substrate Reef Coordinates (NAD 1983 UTM Zone 18N, Decimal degrees)					
Restoration Type	Site ID	Site Number	Area (ac)	Longitude	Latitude
	AltSub_77	77	6.62	-76.3197	38.7174
	AltSub_77	77	6.62	-76.3196	38.7178
	AltSub_77	77	6.62	-76.3196	38.7181
	AltSub_77	77	6.62	-76.3201	38.7189
	AltSub_77	77	6.62	-76.3195	38.7190
	AltSub_77	77	6.62	-76.3192	38.7186
	AltSub_77	77	6.62	-76.3187	38.7182
	AltSub_77	77	6.62	-76.3181	38.7178
	AltSub_77	77	6.62	-76.3176	38.7175
	AltSub_77	77	6.62	-76.3171	38.7172
	AltSub_77	77	6.62	-76.3164	38.7170
	AltSub_77	77	6.62	-76.3162	38.7169
Alternate Substrate and Seed	AltSub_78	78	12.27	-76.3193	38.7170
	AltSub_78	78	12.27	-76.3191	38.7168
	AltSub_78	78	12.27	-76.3191	38.7168
	AltSub_78	78	12.27	-76.3191	38.7168
	AltSub_78	78	12.27	-76.3191	38.7168
	AltSub_78	78	12.27	-76.3191	38.7162
	AltSub_78	78	12.27	-76.3185	38.7164
	AltSub_78	78	12.27	-76.3184	38.7164
	AltSub_78	78	12.27	-76.3182	38.7165
	AltSub_78	78	12.27	-76.3181	38.7165
	AltSub_78	78	12.27	-76.3176	38.7160
	AltSub_78	78	12.27	-76.3176	38.7159
	AltSub_78	78	12.27	-76.3175	38.7156
	AltSub_78	78	12.27	-76.3183	38.7156
	AltSub_78	78	12.27	-76.3188	38.7151
	AltSub_78	78	12.27	-76.3190	38.7151
	AltSub_78	78	12.27	-76.3191	38.7155
	AltSub_78	78	12.27	-76.3195	38.7156
	AltSub_78	78	12.27	-76.3197	38.7152
	AltSub_78	78	12.27	-76.3198	38.7148
	AltSub_78	78	12.27	-76.3198	38.7141
	AltSub_78	78	12.27	-76.3200	38.7140
	AltSub_78	78	12.27	-76.3205	38.7139
	AltSub_78	78	12.27	-76.3207	38.7146
	AltSub_78	78	12.27	-76.3207	38.7152
	AltSub_78	78	12.27	-76.3207	38.7159
	AltSub_78	78	12.27	-76.3206	38.7165
	AltSub_78	78	12.27	-76.3201	38.7173
	AltSub_78	78	12.27	-76.3197	38.7174
	AltSub_78	78	12.27	-76.3193	38.7170

Harris Creek Substrate Reef Coordinates (NAD 1983 UTM Zone 18N, Decimal degrees)					
Restoration Type	Site ID	Site Number	Area (ac)	Longitude	Latitude
Alternate Substrate and Seed	AltSub_79	79	0.81	-76.3157	38.7125
	AltSub_79	79	0.81	-76.3163	38.7118
	AltSub_79	79	0.81	-76.3165	38.7119
	AltSub_79	79	0.81	-76.3165	38.7121
	AltSub_79	79	0.81	-76.3162	38.7126
	AltSub_79	79	0.81	-76.3161	38.7128
	AltSub_79	79	0.81	-76.3157	38.7125
Alternate Substrate and Seed	AltSub_80	80	2.45	-76.3027	38.7304
	AltSub_80	80	2.45	-76.3013	38.7304
	AltSub_80	80	2.45	-76.3013	38.7300
	AltSub_80	80	2.45	-76.3021	38.7296
	AltSub_80	80	2.45	-76.3024	38.7296
	AltSub_80	80	2.45	-76.3029	38.7297
	AltSub_80	80	2.45	-76.3028	38.7299
	AltSub_80	80	2.45	-76.3028	38.7304
	AltSub_80	80	2.45	-76.3028	38.7304
	AltSub_80	80	2.45	-76.3027	38.7304
Alternate Substrate and Seed	AltSub_81	81	2.77	-76.2998	38.7402
	AltSub_81	81	2.77	-76.2998	38.7402
	AltSub_81	81	2.77	-76.2998	38.7404
	AltSub_81	81	2.77	-76.2990	38.7410
	AltSub_81	81	2.77	-76.2987	38.7409
	AltSub_81	81	2.77	-76.2989	38.7404
	AltSub_81	81	2.77	-76.2991	38.7400
	AltSub_81	81	2.77	-76.2997	38.7391
	AltSub_81	81	2.77	-76.3001	38.7391
	AltSub_81	81	2.77	-76.2999	38.7396
	AltSub_81	81	2.77	-76.2998	38.7397
	AltSub_81	81	2.77	-76.2998	38.7402
Alternate Substrate and Seed	AltSub_83	83	1.69	-76.3066	38.7549
	AltSub_83	83	1.69	-76.3058	38.7546
	AltSub_83	83	1.69	-76.3063	38.7541
	AltSub_83	83	1.69	-76.3071	38.7540
	AltSub_83	83	1.69	-76.3072	38.7543
	AltSub_83	83	1.69	-76.3074	38.7545
	AltSub_83	83	1.69	-76.3069	38.7545
	AltSub_83	83	1.69	-76.3066	38.7549
Alternate Substrate and Seed	AltSub_84	84	1.13	-76.2995	38.7664
	AltSub_84	84	1.13	-76.2998	38.7661
	AltSub_84	84	1.13	-76.2999	38.7662
	AltSub_84	84	1.13	-76.3002	38.7664
	AltSub_84	84	1.13	-76.3002	38.7666

Harris Creek Substrate Reef Coordinates (NAD 1983 UTM Zone 18N, Decimal degrees)					
Restoration Type	Site ID	Site Number	Area (ac)	Longitude	Latitude
	AltSub_84	84	1.13	-76.3000	38.7667
	AltSub_84	84	1.13	-76.2993	38.7670
	AltSub_84	84	1.13	-76.2992	38.7669
	AltSub_84	84	1.13	-76.2990	38.7668
	AltSub_84	84	1.13	-76.2993	38.7666
	AltSub_84	84	1.13	-76.2995	38.7664
Alternate Substrate and Seed	AltSub_101	101	2.10	-76.3158	38.7162
	AltSub_101	101	2.10	-76.3169	38.7158
	AltSub_101	101	2.10	-76.3170	38.7167
	AltSub_101	101	2.10	-76.3162	38.7169
	AltSub_101	101	2.10	-76.3158	38.7162
Alternate Substrate and Seed	AltSub_102	102	2.91	-76.3164	38.7204
	AltSub_102	102	2.91	-76.3164	38.7204
	AltSub_102	102	2.91	-76.3164	38.7204
	AltSub_102	102	2.91	-76.3157	38.7209
	AltSub_102	102	2.91	-76.3157	38.7209
	AltSub_102	102	2.91	-76.3154	38.7208
	AltSub_102	102	2.91	-76.3158	38.7201
	AltSub_102	102	2.91	-76.3160	38.7194
	AltSub_102	102	2.91	-76.3164	38.7190
	AltSub_102	102	2.91	-76.3168	38.7191
	AltSub_102	102	2.91	-76.3166	38.7198
	AltSub_102	102	2.91	-76.3164	38.7204
Alternate Substrate and Seed	AltSub_103	103	1.79	-76.3121	38.7238
	AltSub_103	103	1.79	-76.3123	38.7235
	AltSub_103	103	1.79	-76.3127	38.7235
	AltSub_103	103	1.79	-76.3127	38.7238
	AltSub_103	103	1.79	-76.3127	38.7241
	AltSub_103	103	1.79	-76.3125	38.7244
	AltSub_103	103	1.79	-76.3121	38.7248
	AltSub_103	103	1.79	-76.3117	38.7247
	AltSub_103	103	1.79	-76.3121	38.7238
Alternate Substrate and Seed	AltSub_104	104	3.37	-76.3038	38.7210
	AltSub_104	104	3.37	-76.3041	38.7208
	AltSub_104	104	3.37	-76.3042	38.7214
	AltSub_104	104	3.37	-76.3044	38.7217
	AltSub_104	104	3.37	-76.3044	38.7221
	AltSub_104	104	3.37	-76.3043	38.7226
	AltSub_104	104	3.37	-76.3042	38.7229
	AltSub_104	104	3.37	-76.3040	38.7233
	AltSub_104	104	3.37	-76.3038	38.7234
	AltSub_104	104	3.37	-76.3036	38.7232

Harris Creek Substrate Reef Coordinates (NAD 1983 UTM Zone 18N, Decimal degrees)					
Restoration Type	Site ID	Site Number	Area (ac)	Longitude	Latitude
	AltSub_104	104	3.37	-76.3035	38.7229
	AltSub_104	104	3.37	-76.3035	38.7224
	AltSub_104	104	3.37	-76.3037	38.7220
	AltSub_104	104	3.37	-76.3038	38.7216
	AltSub_104	104	3.37	-76.3038	38.7210
Alternate Substrate and Seed	AltSub_105	105	2.06	-76.3175	38.7156
	AltSub_105	105	2.06	-76.3172	38.7149
	AltSub_105	105	2.06	-76.3183	38.7148
	AltSub_105	105	2.06	-76.3188	38.7151
	AltSub_105	105	2.06	-76.3183	38.7156
	AltSub_105	105	2.06	-76.3175	38.7156
Alternate Substrate and Seed	AltSub_106	106	2.14	-76.3065	38.7180
	AltSub_106	106	2.14	-76.3068	38.7177
	AltSub_106	106	2.14	-76.3072	38.7177
	AltSub_106	106	2.14	-76.3072	38.7177
	AltSub_106	106	2.14	-76.3078	38.7174
	AltSub_106	106	2.14	-76.3081	38.7180
	AltSub_106	106	2.14	-76.3079	38.7180
	AltSub_106	106	2.14	-76.3068	38.7185
	AltSub_106	106	2.14	-76.3065	38.7180
Alternate Substrate and Seed	AltSub_107	107	5.72	-76.3069	38.7152
	AltSub_107	107	5.72	-76.3068	38.7147
	AltSub_107	107	5.72	-76.3064	38.7145
	AltSub_107	107	5.72	-76.3061	38.7144
	AltSub_107	107	5.72	-76.3063	38.7141
	AltSub_107	107	5.72	-76.3064	38.7136
	AltSub_107	107	5.72	-76.3071	38.7138
	AltSub_107	107	5.72	-76.3077	38.7137
	AltSub_107	107	5.72	-76.3082	38.7146
	AltSub_107	107	5.72	-76.3081	38.7153
	AltSub_107	107	5.72	-76.3078	38.7154
	AltSub_107	107	5.72	-76.3075	38.7153
	AltSub_107	107	5.72	-76.3074	38.7152
	AltSub_107	107	5.72	-76.3069	38.7152
Alternate Substrate and Seed	AltSub_108	108	1.82	-76.3165	38.7121
	AltSub_108	108	1.82	-76.3176	38.7123
	AltSub_108	108	1.82	-76.3168	38.7131
	AltSub_108	108	1.82	-76.3162	38.7126
	AltSub_108	108	1.82	-76.3165	38.7121