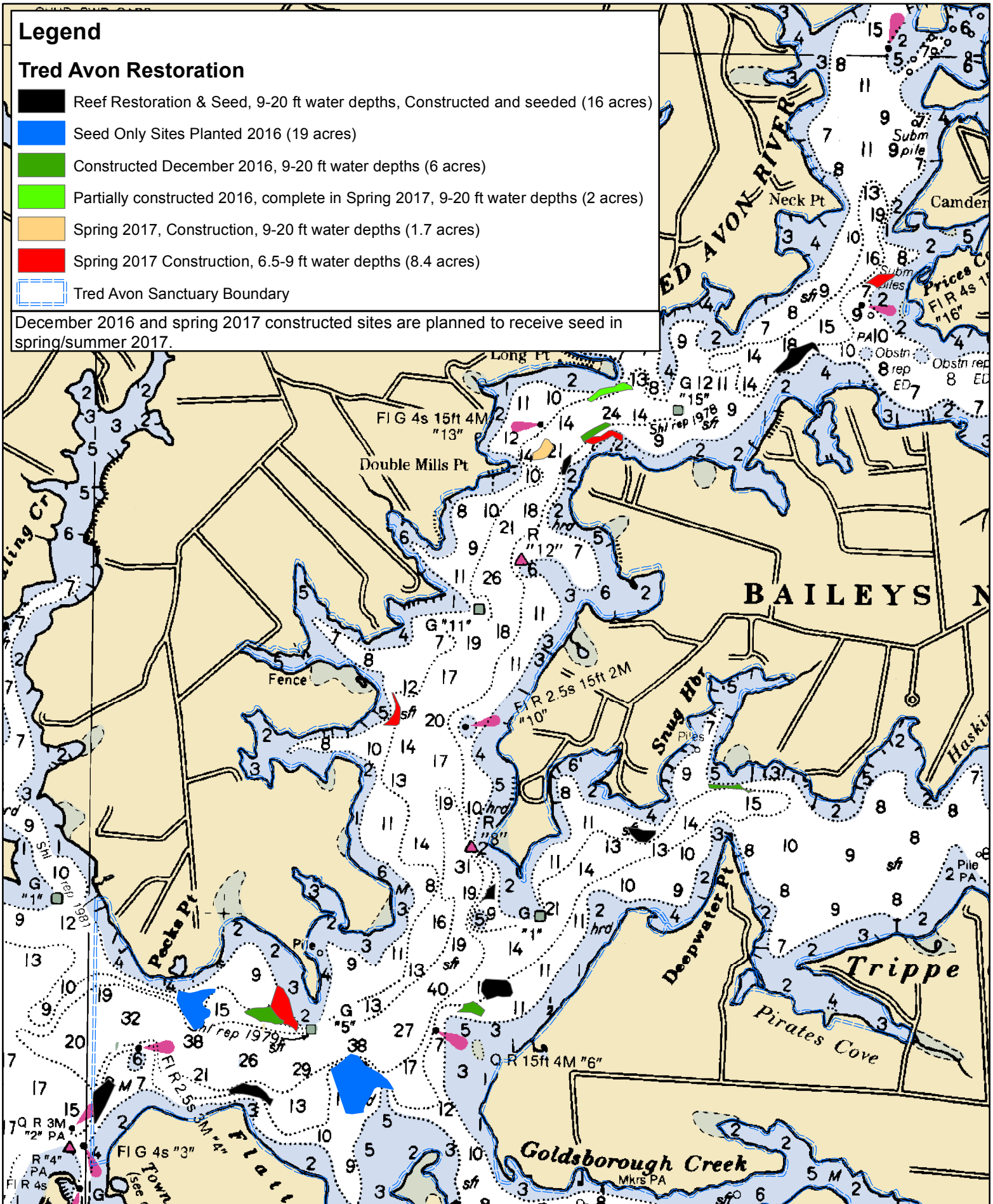


Legend

Tred Avon Restoration

- Reef Restoration & Seed, 9-20 ft water depths, Constructed and seeded (16 acres)
- Seed Only Sites Planted 2016 (19 acres)
- Constructed December 2016, 9-20 ft water depths (6 acres)
- Partially constructed 2016, complete in Spring 2017, 9-20 ft water depths (2 acres)
- Spring 2017, Construction, 9-20 ft water depths (1.7 acres)
- Spring 2017 Construction, 6.5-9 ft water depths (8.4 acres)
- Tred Avon Sanctuary Boundary

December 2016 and spring 2017 constructed sites are planned to receive seed in spring/summer 2017.



Tred Avon River Oyster Restoration

