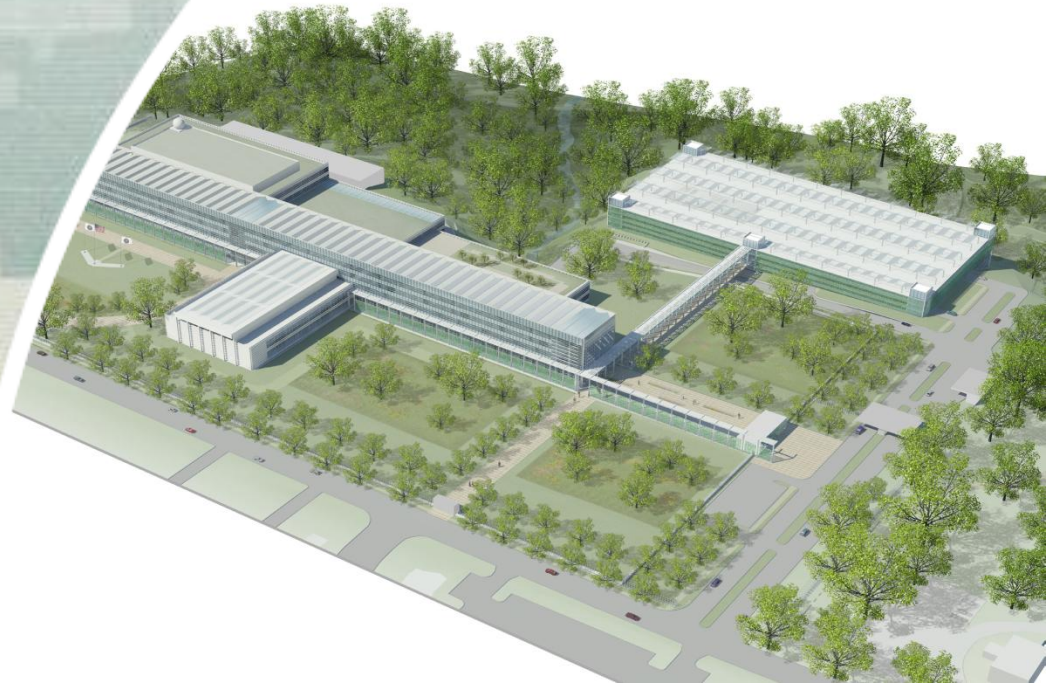


Intelligence Community Campus – Bethesda (ICC-B)

January 12, 2012



US Army Corps of Engineers
BUILDING STRONG®

Existing Campus



BUILDING STRONG®

This Evening's Discussion

- When We Last Met
- What We've Done
- What's Next



Legend

- Demolish
- Retain
- Concept Design
- Phase 1 Design
- Proposed Traffic Patterns



NCPC Direction

“...evaluate alternatives to the size, location, and capacity of the parking garage to include exclusion of parking from the secured perimeter.”



Legend

- Demolish
- Retain
- Concept Design
- Phase 1 Design
- Proposed Traffic Patterns



Legend

- Demolish
- Retain
- Concept Design
- Updated Phase 1 Design for Garage
- Phase 1 Design
- Updated Proposed Traffic Patterns
- Previous Proposed Traffic Patterns

Emory Hall

Erskine Hall

Abert Hall

Maury Hall

Roberdeau Hall

Garage

Vehicle Inspection Station
Visitor Control Center

Brooks Ln

Sangamore Rd

Washburn Rd

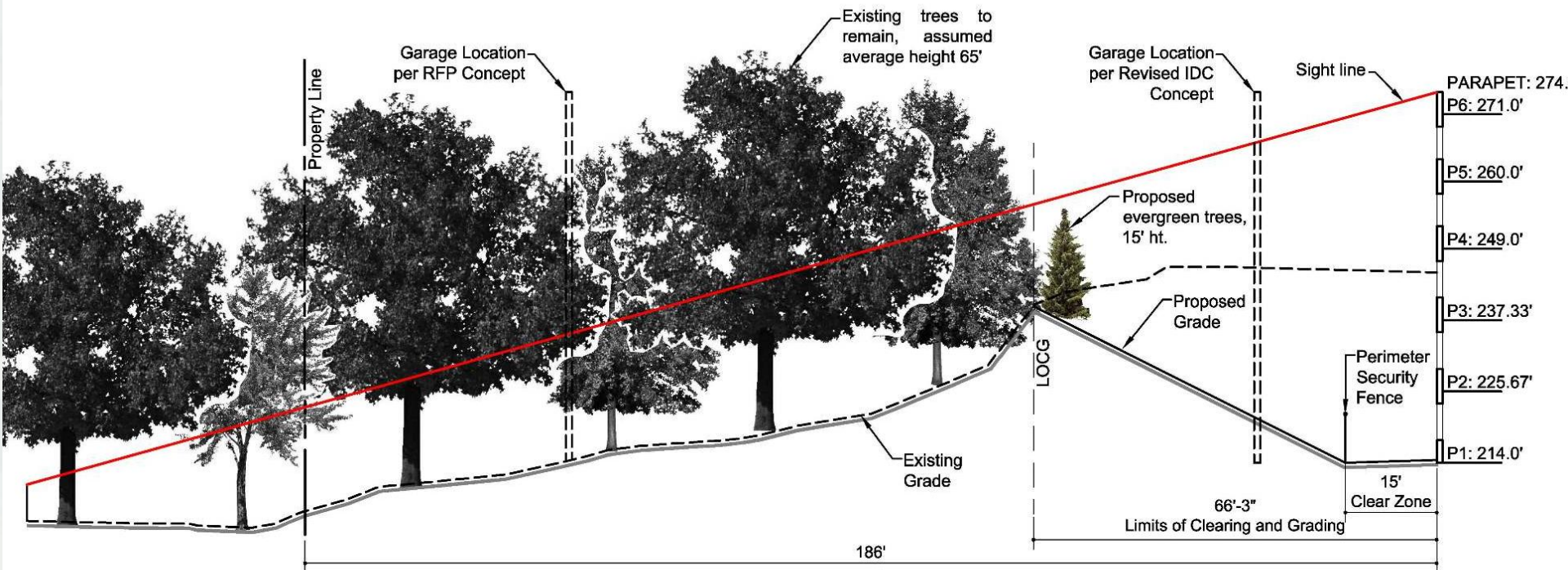
Legend

- Demolish
- Retain
- Concept Design
- Updated Proposed Traffic Patterns
- Updated Phase 1 Design for Garage
- Phase 1 Design





BUILDING STRONG®



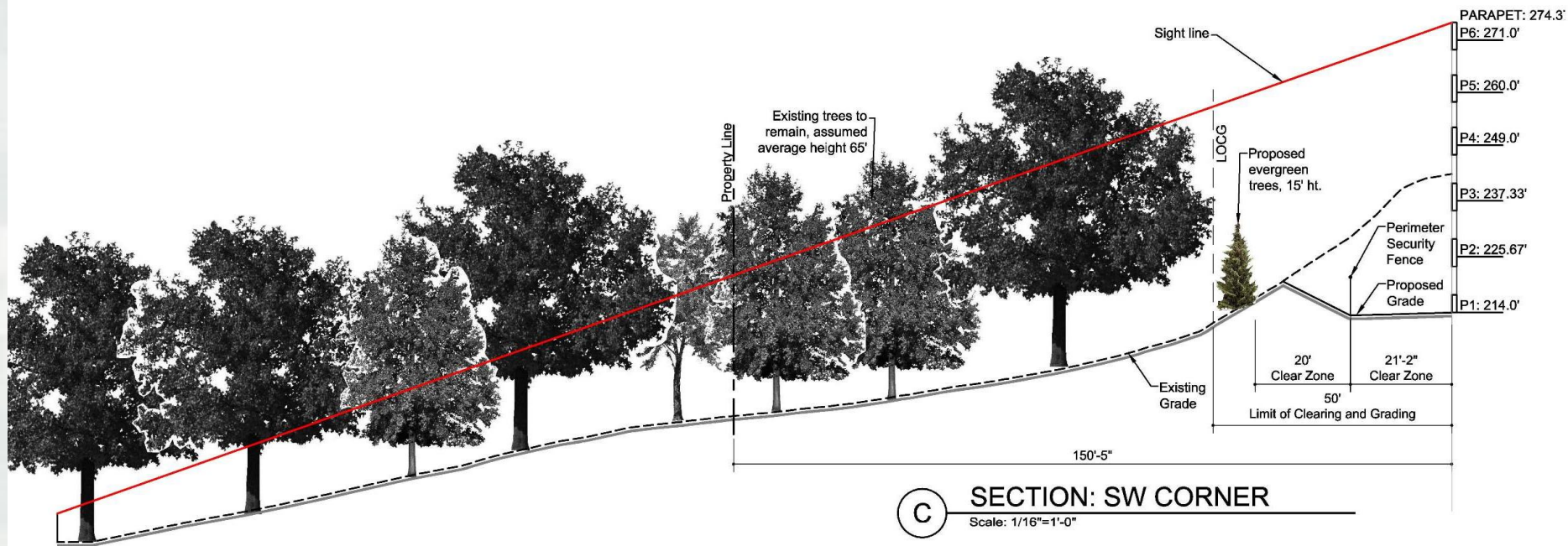
A

SECTION: NW CORNER

Scale: 1/16"=1'-0"



BUILDING STRONG®



C SECTION: SW CORNER
Scale: 1/16"=1'-0"



BUILDING STRONG®



D SECTION: SE CORNER
Scale: 1/16"=1'-0"



BUILDING STRONG®

Rendered View from Sangamore Road



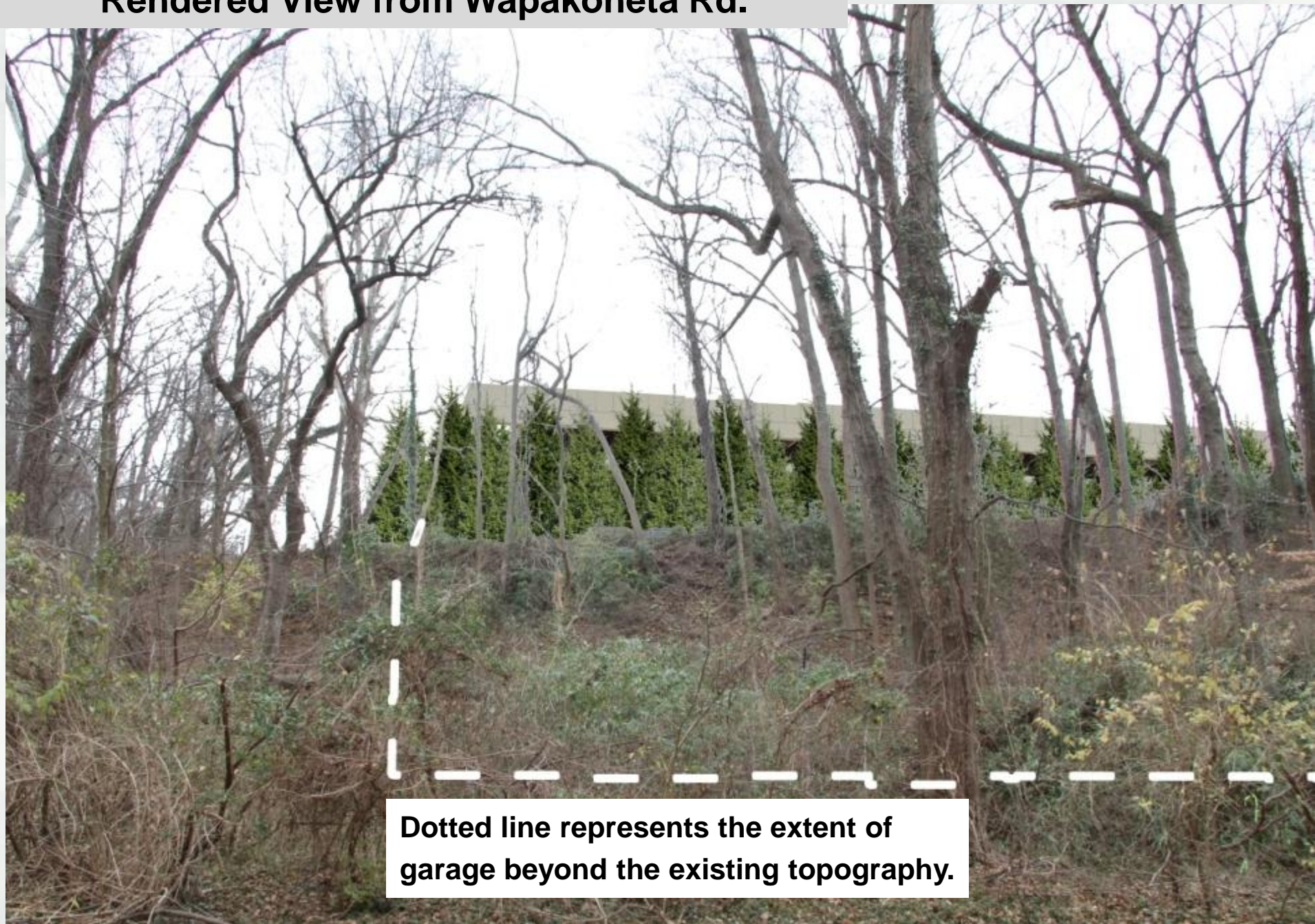
Rendered View from Chain Bridge



Rendered View from McArthur Blvd.



Rendered View from Wapakoneta Rd.



Dotted line represents the extent of
garage beyond the existing topography.

Summary of Phase 1 Design Revisions

- Garage size reduced
 - ▶ 15% reduction in footprint
 - ▶ 10% reduction in parking capacity
- Garage location adjusted
 - ▶ Rotated
 - ▶ Moved further east
 - ▶ Approximately 75% of footprint is on existing parking lot
- Reduction of forested area impacted
 - ▶ All specimen trees preserved, and overall area impacted reduced by 2/3rds
 - ▶ Trees along school/park boundary maintained or improved
 - ▶ Minimal tree disturbance along western side of garage
- Reduction of view-shed impacts
- Revised site entrance
 - ▶ Retention of stop sign at Sangamore & Sentinel
 - ▶ North entrance removed and landscaped at completion of Phase 2



TMP Highlights

Primary Goal: Target Average Vehicle Occupancy of at least 1.5 persons per vehicle

18 specifically defined goals / milestones, including:

- Establish a Transportation Liaison Officer
- Develop car/vanpool and regional ride-share guide and policy (including preferential parking and incentives where possible)
- Establish a shuttle to the Metro
- Allow for staggered work hours and alternate work schedules to limit peak arrivals and departures
- Provide bike racks and facilitate pedestrian access



TMP Highlights (cont.)

- Promote local home ownership and establish local real estate relocation directory
- Implement IT based commuting options where possible
- Implement IT message boards / transit kiosk for employees & visitors to promote alternate commuting choices
- Implement “no-idling” policy for vehicles
- Participate in local/regional transportation planning efforts and initiatives
- Publish and continually promote alternative transportation options



Overall Highlights

- Revitalize the campus and improve overall aesthetics
 - ▶ Remove large amount of impervious parking
 - ▶ Significantly improved view along Sangamore Road
 - ▶ Limit building heights
 - ▶ Maximize buffer around the entire property
- Minimize view-shed impacts along Potomac Palisades
- Substantially improve site Storm Water Management
- Energy Efficient & Sustainable Design and Construction
 - ▶ Net-Zero & LEED Gold Visitor Control Center
 - ▶ LEED Silver Campus
- Retain bus-stops, sidewalks, and other pedestrian features



Closing Remarks

- Continued coordination
 - ▶ National Capital Planning Commission
 - ▶ Montgomery County / Maryland-National Capital Parks and Planning Commission
 - ▶ Community

- Questions



