

Raystown Lake Master Plan

Highlights

THE REVISED PLAN



The final revised Master Plan provides a framework for consistent, responsible decision-making at Raystown Lake for the next 15 to 25 years. The Plan includes the provision of enhanced recreational opportunities for the public through various forms of low-impact, passive recreation. Three significant efforts were conducted in order to obtain the necessary information to guide revision decisions and future management of Raystown:



Boating Carrying Capacity Study

This study found that Raystown Lake is currently at capacity/exceeding boating capacity. Raystown Lake's current peak boating use of 5.7 acres per boat, is well beyond the recommended standard identified for Raystown Lake of 10-20 acres per boat. The revised Plan does not propose any additional motorized boating access to the lake.



Biological Inventories

Biological inventories were necessary to determine the existence of special status species populations occurring on project lands as well as determine if significant changes in existing populations have occurred. The results of this inventory assisted in the identification and mapping of environmentally sensitive areas.



Public Input

Input from the public was incorporated into the Master Plan to ensure that future management actions are both environmentally sustainable and responsive to public outdoor recreation needs. Through 2 phases of public comment periods over 1,150 comments were collected, with the majority focused on the land classification of the Hawn's Bridge area.



HAWN'S BRIDGE AREA

Following the analysis of comments from public and agency review of the draft Plan, in addition to the reviews and analysis of the biological inventories and Boating Carrying Capacity Study, no changes were made to the land classifications as presented in the draft Plan to the Hawn's Bridge area. The Hawn's Bridge area has been divided into four land parcels classified as such: Parcel 4013 - environmentally sensitive, Parcel 5305 - vegetative management, Parcel 5205 - wildlife management, and Parcel 5206 - wildlife management.

QUESTIONS



www.nab.usace.army.mil/Raystown-Master-Plan-Revision/



Raystown Lake Office: (814) 658-3405



RaystownMPrevision@usace.army.mil



FORMAT OF THE MASTER PLAN



The Master Plan includes the following chapters:

- 1 Introduction:** Reviews the purpose and overview of the Project and the Master Plan.
- 2 Project Setting and Factors Influencing Management and Development:** Details natural and cultural resources, hydrology of the lake, visual qualities, economic factors, topography, etc.
- 3 Resource Objectives:** Details the goals and resource objectives at the lake.
- 4 Land and Water Use Classification:** Details land and water allocations and classifications.
- 5 Resource Plan:** Outlines land and water classification areas such as operations areas, environmentally sensitive areas, high-density recreation areas, etc.
- 6 Special Topics:** Covers various topics such as the land inventory, boat capacity study, partnerships, etc.
- 7 Agency and Public Coordination:** Details how public and agency comments were collected and evaluated.
- 8 Summary of Recommendations:** Details a summary of the findings and proposed actions of the Master Plan.
- 9 Bibliography:** Details any additional sources cited in the Master Plan.
- A Appendices:** Includes the Environmental Assessment, park maps, land classification maps, the boating study, biological inventory report, etc.

FUTURE RECREATION AREAS



Maps like the one below depict areas identified for Future Recreation. **Parcel 5402 - Moonbeam Paddle Access** site has been identified as a Future Recreation Area in the northern part of the lake to provide non-motorized vessel access, fishing access, and wildlife viewing opportunities. A total of 7 sites were identified as future recreation areas and include:

Parcel 5401 - Corbin's Bridge River Access

This site supports the need and desire for non-motorized recreation access on the river below the Raystown Dam.

Parcel 5403 - Susquehannock North

As included in the 1994 Master Plan, this site would provide additional camping and expanded recreation opportunities.

Parcel 5404 - Upper Corners

Also included in the 1994 Master Plan, this site would provide recreation opportunities including cabins, lodge, and conference center.

Parcel 5405 - Coffee Run Recreation Area

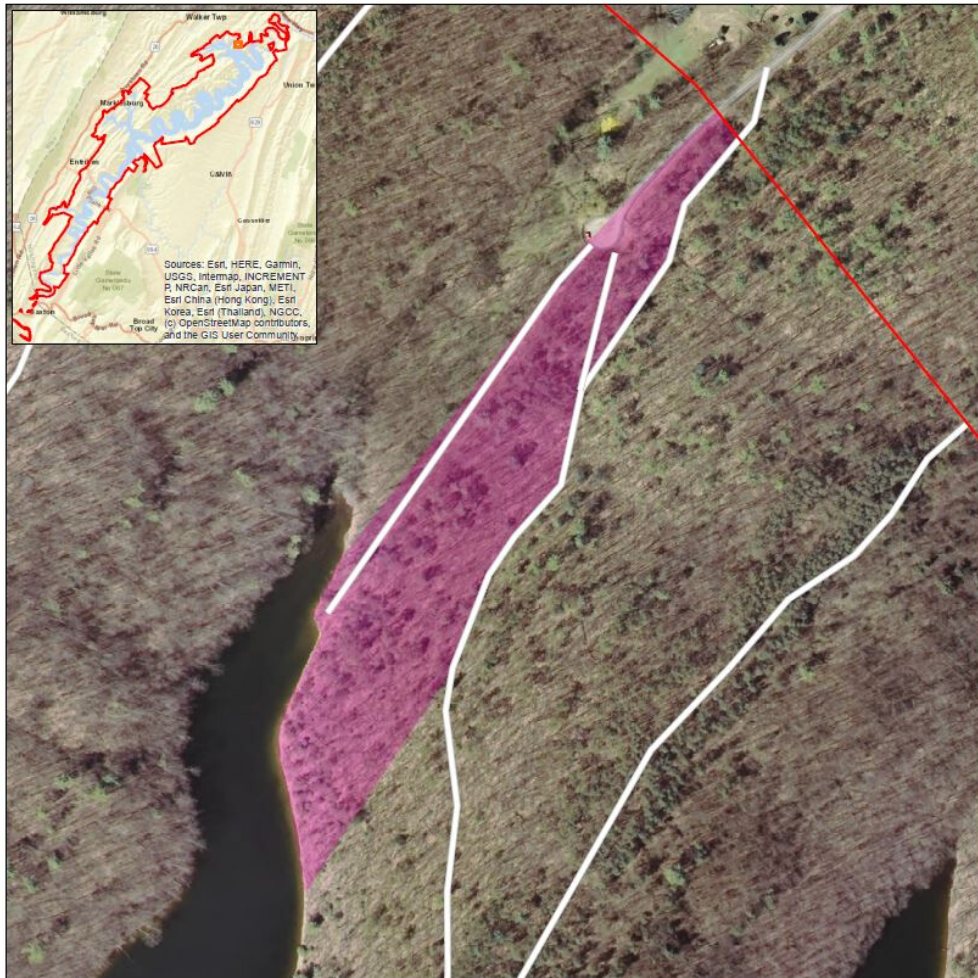
The site was selected to meet new recreation demands including equestrian trails, along with non-motorized vessel and fishing access.

Parcel 5406 - Headwaters Camp

Existing adjacent to the Terrace Mountain Trail, this future recreation area would provide expanded camping opportunities.

Parcel 5407 - Weaver's Bridge Access

This site will provide the necessary infrastructure and facilities to support current use of the area as a shoreline fishing access site.



This 6 acre area would provide:
 -An access road
 -Parking
 -Sanitary facilities
 -Non-motorized launching access
 -Fishing pier
 -Wildlife viewing opportunities

— Roads
 — Fee Boundary
 — Future or Inactive Rec

—Disclaimer—

The results and data shown on this map should be used for planning purposes to suit only the needs for this master plan. The data has not been prepared for, and is not suitable for legal, engineering, or surveying purposes



U.S. Army Corps of Engineers

Baltimore District

Raystown Lake Future or Inactive Recreation Areas

Parcel 5402: Moonbeam Paddle Access (6 Acres)



0 200 400 600 800 Feet

Date:

May 2019

Map No.

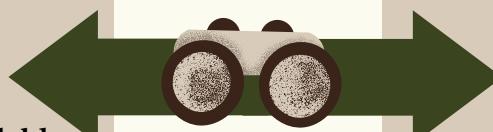
Appendix D, Map 17

WHERE TO FIND THE PLAN



ONLINE

The completed Master Plan is available on the project website at <http://www.nab.usace.army.mil/Raystown-Master-Plan-Revision/>



IN-PERSON



The completed Master Plan is available in printed form at the Raystown Lake Visitors Center, 6145 Seven Points Road, Hesston, PA 16647.

