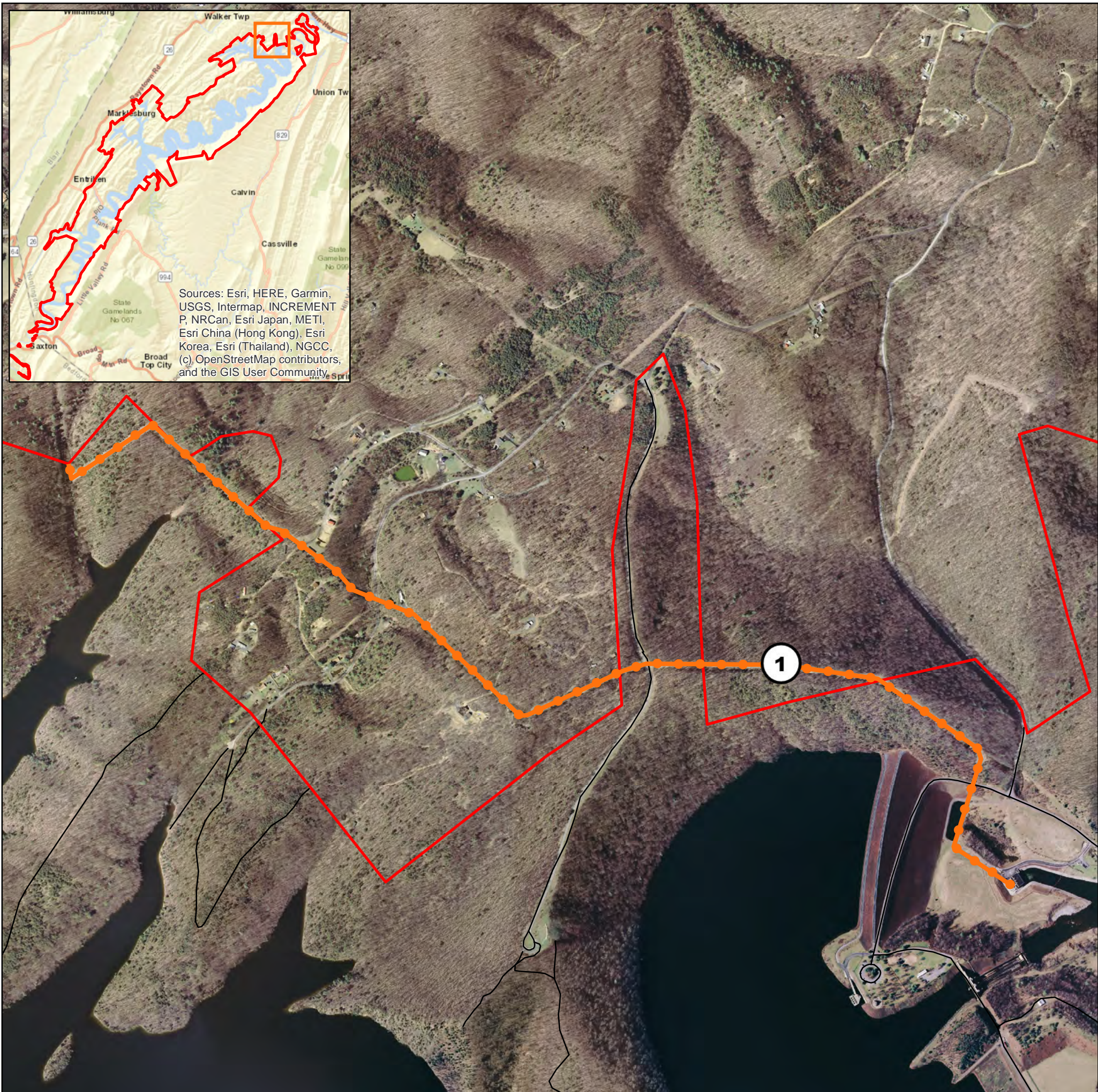


APPENDIX E

Utility Corridors





- Utility Corridor
- Fee Boundary

--Disclaimer--

The results and data shown on this map should be used for planning purposes to suit only the needs for this master plan. The data has not been prepared for, and is not suitable for legal, engineering, or surveying purposes



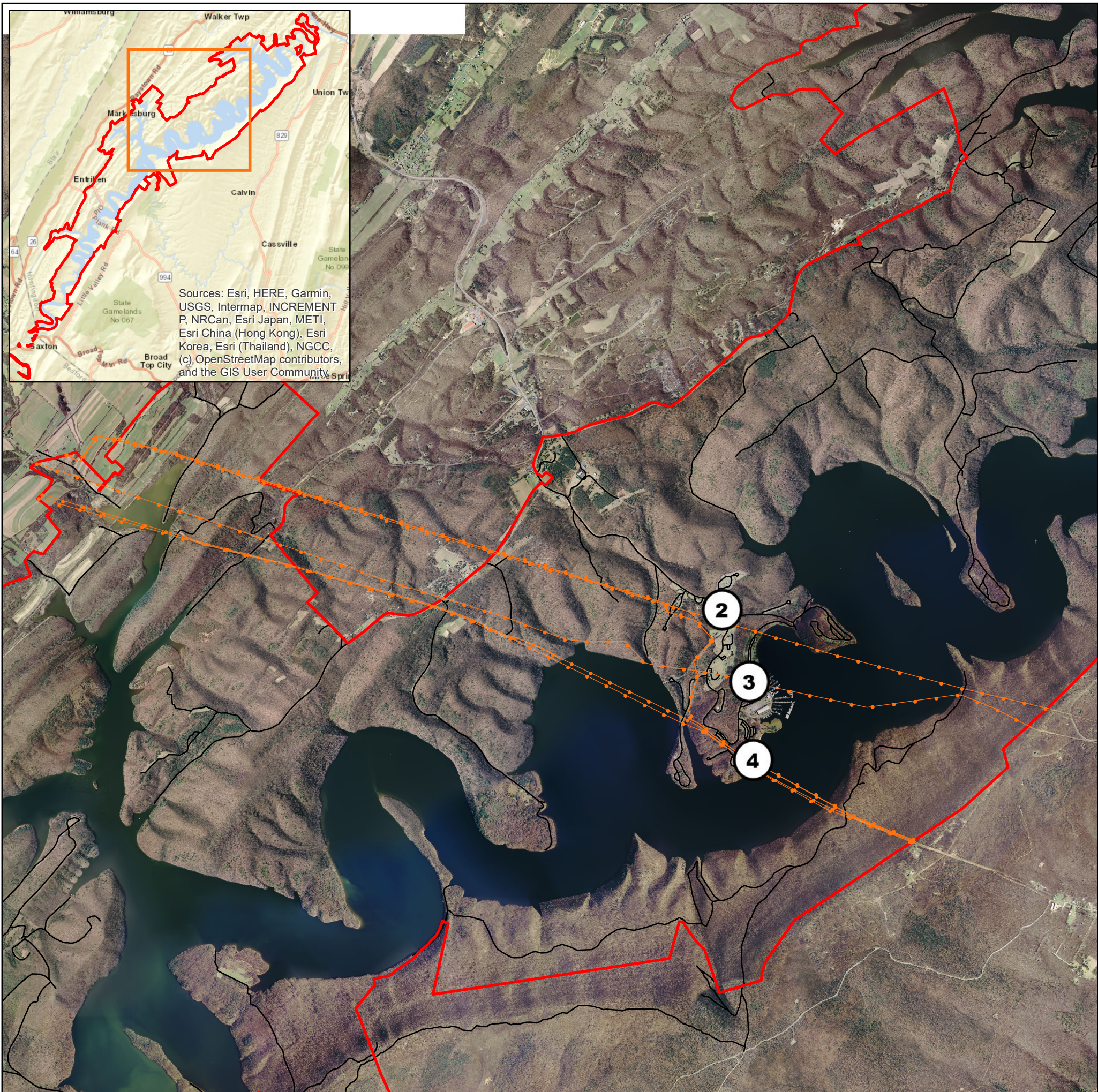
U.S. Army Corps of Engineers
Baltimore District

Raystown Lake Utility Corridors



Date:
May 2019

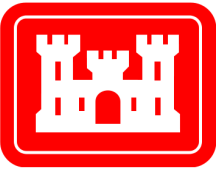
Map No.
Appendix E, Map 1



- Utility Corridor
- Fee Boundary

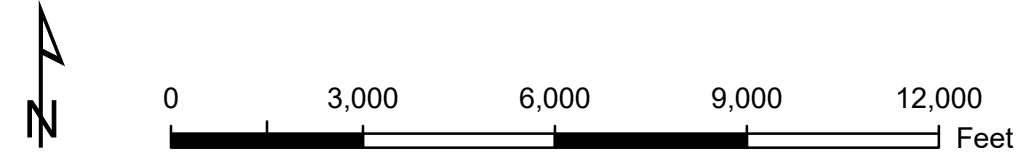
--Disclaimer--

The results and data shown on this map should be used for planning purposes to suit only the needs for this master plan. The data has not been prepared for, and is not suitable for legal, engineering, or surveying purposes

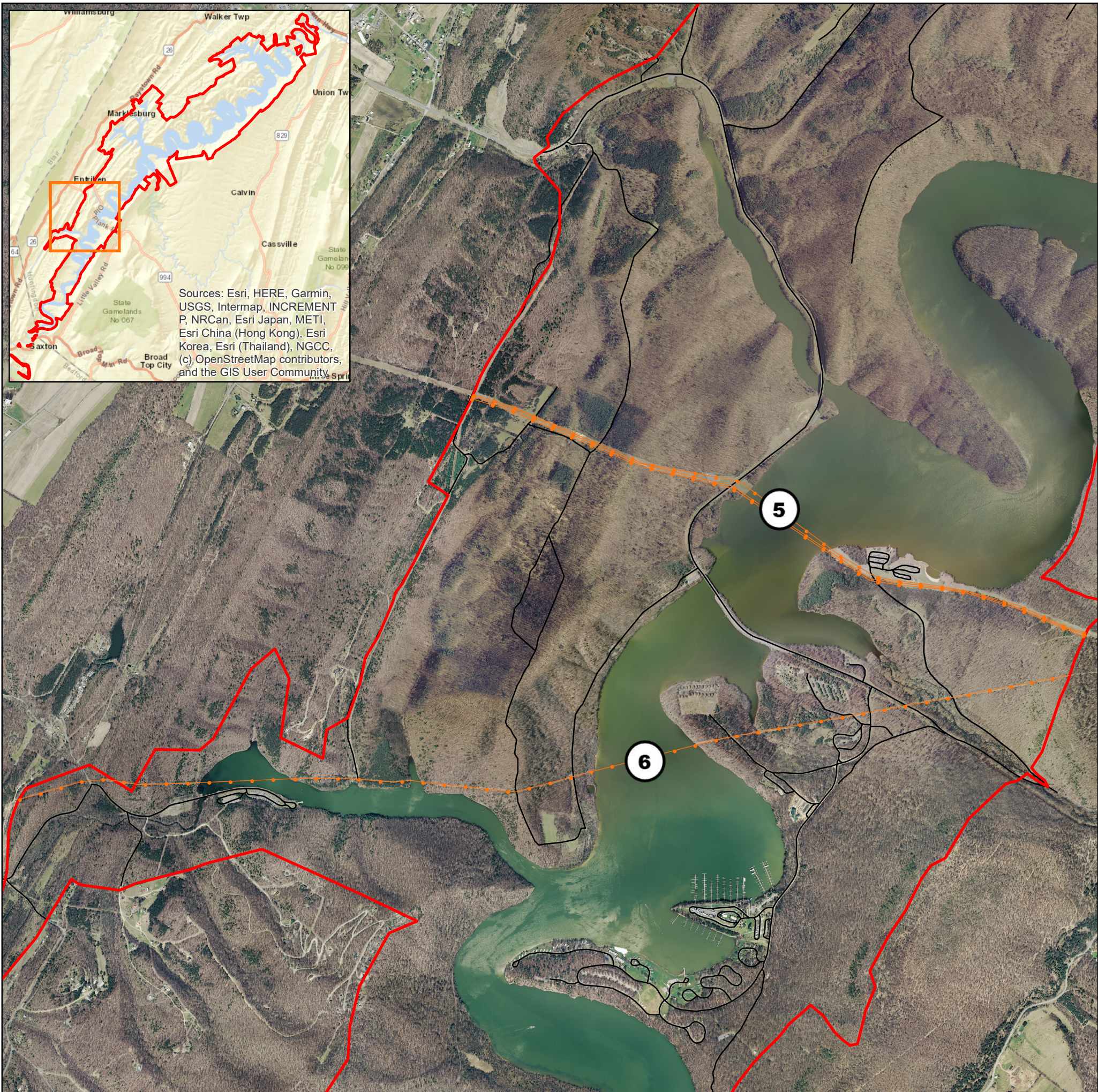


U.S. Army Corps of Engineers
Baltimore District

Raystown Lake Utility Corridors



Date: May 2019	Map No. Appendix E, Map 2
-------------------	------------------------------

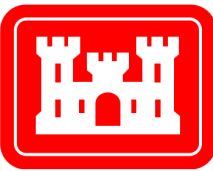


Sources: Esri, HERE, Garmin, USGS, Intermap, INCREMENT P, NRCan, Esri Japan, METI, Esri China (Hong Kong), Esri Korea, Esri (Thailand), NGCC, (c) OpenStreetMap contributors, and the GIS User Community

- Utility Corridor
- Fee Boundary

--Disclaimer--

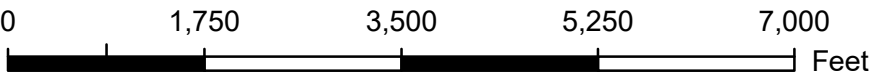
The results and data shown on this map should be used for planning purposes to suit only the needs for this master plan. The data has not been prepared for, and is not suitable for legal, engineering, or surveying purposes



U.S. Army Corps of Engineers

Baltimore District

Raystown Lake Utility Corridors

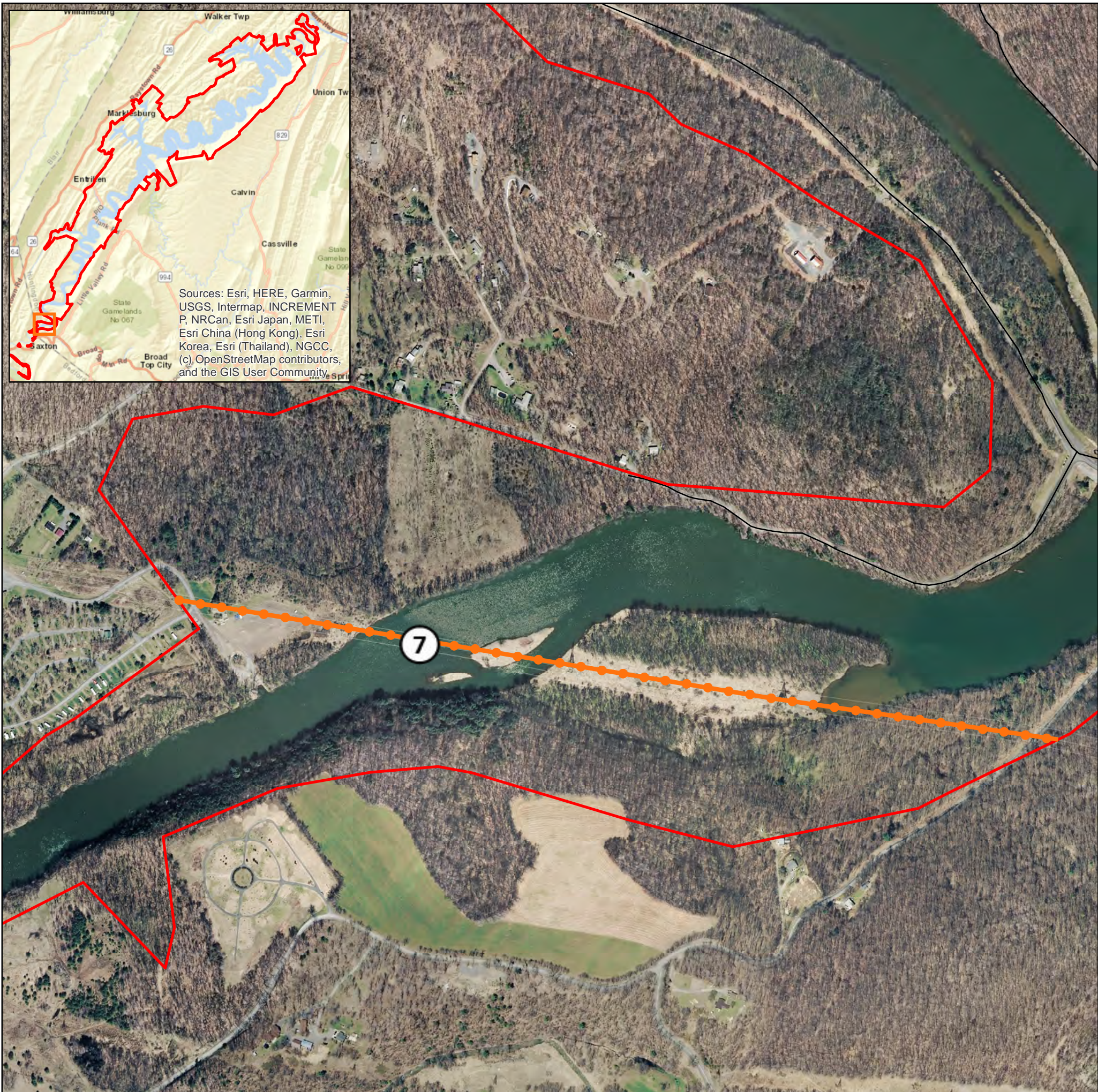


Date:

May 2019

Map No.

Appendix E, Map 3



- Utility Corridor
- Fee Boundary

--Disclaimer--

The results and data shown on this map should be used for planning purposes to suit only the needs for this master plan. The data has not been prepared for, and is not suitable for legal, engineering, or surveying purposes



U.S. Army Corps of Engineers
Baltimore District

Raystown Lake Utility Corridors



Date:
May 2019

Map No.
Appendix E, Map 4