



U.S. Army Corps  
of Engineers

Baltimore District  
PN-17-05

# Public Notice

In Reply to Application Number  
CENAB-OPR-P-2016-01633-P05 (Transcontinental Gas Pipe Line  
Company, LLC Leidy "B" Line Hydrotest Phase IV – Section 1 End)

Comment Period: January 12, 2017 to February 11, 2017

---

**THE PURPOSE OF THIS PUBLIC NOTICE IS TO SOLICIT COMMENTS FROM THE PUBLIC REGARDING THE WORK DESCRIBED BELOW. NO DECISION HAS BEEN MADE AS TO WHETHER OR NOT A PERMIT WILL BE ISSUED AT THIS TIME.**

This District has received an application for a Department of the Army permit pursuant to Section 10 of the Rivers and Harbors Act of 1899 and/or Section 404 of the Clean Water Act (33 U.S.C. 1344) as described below:

**APPLICANT:** Mr. Josh Henry  
Transcontinental Gas Pipe Line Company, LLC  
Park Place Corporate Center Two, 2000 Commerce Drive  
Pittsburgh, Pennsylvania 15275

**WATERWAY AND LOCATION OF THE PROPOSED WORK:** In an unnamed tributary to Larry's Creek and abutting wetlands in Mifflin Township, Lycoming County, Pennsylvania

**PROPOSED WORK AND PURPOSE:** The applicant proposes to access, excavate and backfill the existing Transcontinental Leidy "B" natural gas pipeline in order to hydrostatically test the pipeline. The proposed project will temporarily impact 43,078 square feet of emergent wetlands and 58 linear feet (953 square feet) of a stream. All disturbance areas are proposed to be restored to pre-construction conditions. All work is proposed to be completed in accordance with the enclosed plans. If you have any questions concerning this matter, please contact Mrs. Marion Gall, of this office at [marion.gall@usace.army.mil](mailto:marion.gall@usace.army.mil), telephone number (814) 235-1761, or at mailing address 1631 South Atherton Street, Suite 101 State College, Pennsylvania 16801.

The decision whether to issue a permit will be based on an evaluation of the probable impacts, including cumulative impacts of the proposed activity on the public interest. That decision will reflect the national concern for both protection and utilization of important resources. The benefit, which reasonable may be expected to accrue from the proposal, must be balanced against its reasonably foreseeable detriments. All factors, which may be relevant to the proposal will be considered, including the cumulative effects thereof; among those are conservation, economic, aesthetics, general environmental concerns, wetlands, cultural values, fish and wildlife values, flood hazards, flood plain values, land use, navigation, shoreline erosion and accretion, recreation, water supply and conservation, water quality, energy needs, safety, food and fiber production, mineral needs, and consideration of property ownership and in general, the needs and welfare of the people.

The Corps of Engineers is soliciting comments from the public; federal, state, and local agencies and officials; Indian Tribes; and other interested parties in order to consider and evaluate the impacts of this proposed activity. Any comments received will be considered by the Corps of Engineers to determine whether to issue, modify, condition or deny a permit for this proposal. To

make this decision, comments are used to assess impacts on endangered species, historic properties, water quality, general environmental effects, and the other public interest factors listed above. Comments are used in the preparation of an Environmental Assessment and/or an Environmental Impact Statement pursuant to the National Environmental Policy Act. Comments provided will become part of the public record for this action. Comments are also used to determine the need for a public hearing and to determine the overall public interest of the proposed activity. Written comments concerning the work described above related to the factors listed above or other pertinent factors must be received by the District Engineer, U.S. Army Corps of Engineers, Baltimore District, Regulatory Field Office, 1631 South Atherton Street, Suite 101, State College, Pennsylvania 16801 within the comment period specified above.

**ESSENTIAL FISH HABITAT:** The Magnuson-Stevens Fishery Conservation and Management Act (MSFCMA), as amended by the Sustainable Fisheries Act of 1996 (Public Law 04-267), requires all federal agencies to consult with the National Marine Fisheries Service (NMFS) on all actions, or proposed actions, permitted, funded, or undertaken by the agency that may adversely affect Essential Fish Habitat (EFH). The Corps has determined this project will not affect any EFH.

**WATER QUALITY CERTIFICATION:** The applicant is required to obtain a water quality certification in accordance with Section 401 of the Clean Water Act from the Pennsylvania Department of Environmental Protection. The Section 401 certifying agency has a statutory limit of one year from the date of this public notice to make its decision.

**COASTAL ZONE MANAGEMENT PROGRAMS:** Where applicable, the applicant has certified in this application that the proposed activity complies with and will be conducted in a manner consistent with the approved Coastal Zone Management (CZM) Program. By this public notice, we are requesting the state concurrence or objection to the applicant's consistency statement. It should be noted that the CZM Program has a statutory limit of 6 months to make its consistency determination.

The applicant must obtain any state or local government permits which may be required.

A preliminary review of this application indicates that the proposed work will not affect federal listed threatened or endangered species or their critical habitat, pursuant to Section 7 of the Endangered Species Act, as amended. As the evaluation of this application continues, additional information may become available which could modify this preliminary determination.

Review of the latest published version of the National Register of Historic Places indicates that no registered properties listed as eligible for inclusion, therein, are located at the site of the proposed work. Currently unknown archeological, scientific, prehistoric, or historical data may be lost or destroyed by the work to be accomplished under the request permit.

The evaluation of the impact of this project on the public interest will include application of the guidelines promulgated by the Administrator, U.S. Environmental Protection Agency, under authority of Section 404 of the Clean Water Act.

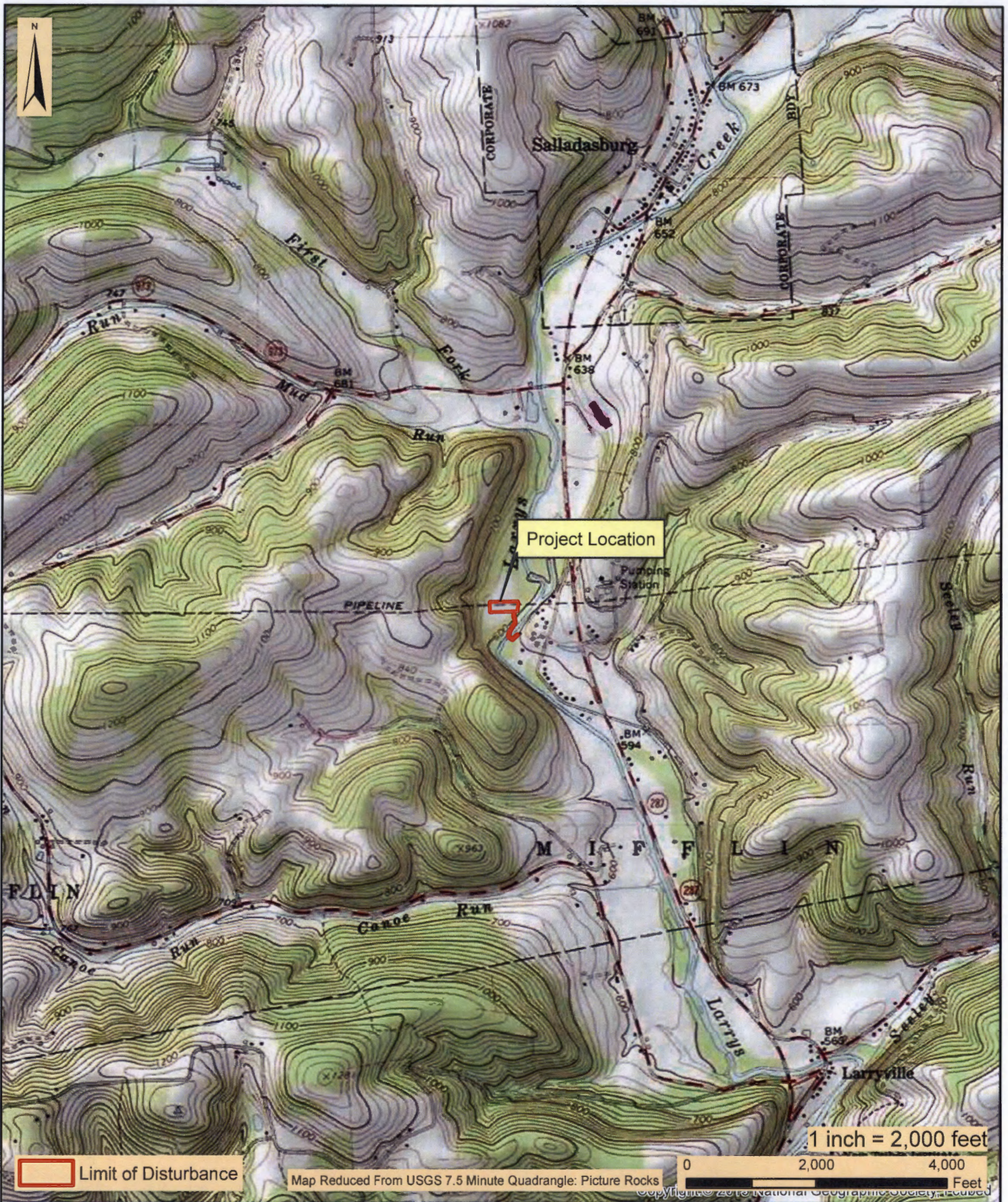
Any person who has an interest which may be adversely affected by the issuance of this permit may request a public hearing. The request, which must be in writing, must be received by the District Engineer, U.S. Army Corps of Engineers, Baltimore District, Regulatory Field Office, 1631 South Atherton Street, Suite 101, State College, Pennsylvania 16801, within the comment period as specified above to receive consideration. Also it must clearly set forth the interest which may be adversely affected by this activity and the manner in which the interest may be adversely affected.


It is requested that you communicate this information concerning the proposed work to any persons know by you to be interested and not being known to this office, who did not receive a copy of this notice.



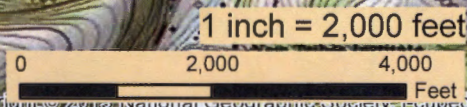
Wade B. Chandler  
Chief, Pennsylvania Section  
Regulatory Branch





 Limit of Disturbance

Map Reduced From USGS 7.5 Minute Quadrangle: Picture Rocks



2525 Green Tech Drive, Suite B,  
State College, PA 16803  
Tele: 814.689.1650 Fax: 814.689.1557

**TRANSCONTINENTAL GAS PIPE LINE COMPANY, LLC  
LEIDY 'B' LINE HYDROTEST  
PHASE IV - SECTION 1 END**

**PROJECT LOCATION MAP**

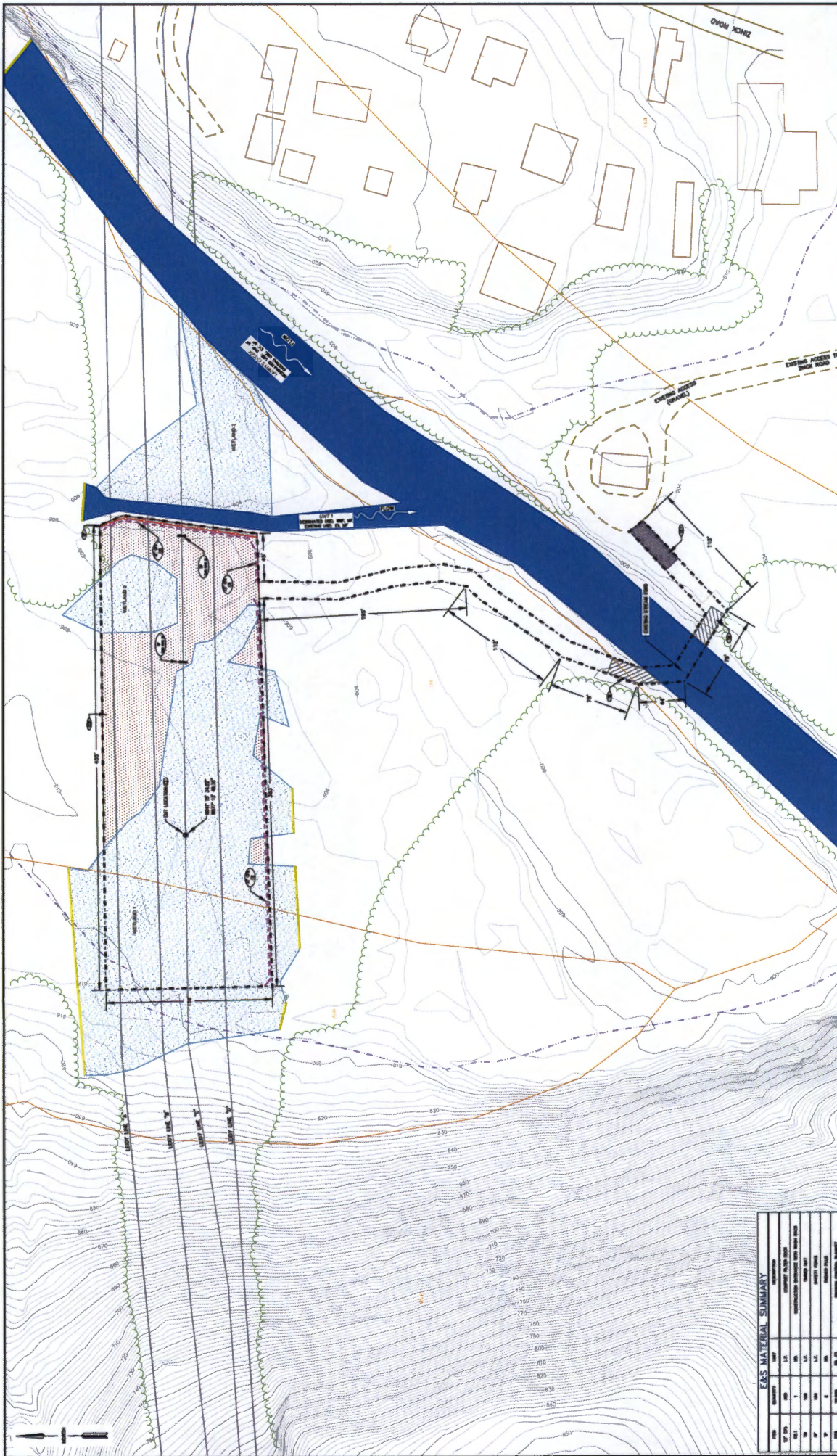
MIFFLIN TOWNSHIP LYCOMING COUNTY PENNSYLVANIA

Date:	06/23/16
WHM Drawing Number:	WILLIAMS052TSK7A001
Drawn By:	PJF
Figure Number:	1









<b>TRANSCONTINENTAL GAS PIPE LINE COMPANY, LLC</b> EROSION AND SEDIMENTATION CONTROL & SITE RESTORATION PLAN LIFTY LINE 3 <sup>RD</sup> HYDROTEST - PHASE IV, SECTION 1 D/D		DATE: 06/23/16 DRAWN BY: DMM CHECKED: KMC DESIGNER: WILLIAMS SHEET NO.: WILLIAMS0502002 TOTAL SHEETS: 2 OF 7
<b>WMM consulting, inc.</b> 1000 WEST 10TH STREET, SUITE 200 STATE COLLEGE, PA 16801 TEL: 717.334.1111 WWW.WMMCONSULTING.COM		PROJECT: EROSION AND SEDIMENTATION CONTROL PLAN LOCATION: LYCOMING COUNTY, PENNSYLVANIA
<b>LEGEND</b>		
PROPOSED LIFTY LINE (1.74 ACRES) EXISTING GAS PIPELINE EXISTING BOUNDARY (PROVIDED) EXISTING BOUNDARY (UNPAVED) FACILITY BOUNDARY	WETLAND STREAM CHANNEL RELIEVE EXISTING CONTOUR MAJOR (10' C.L.) EXISTING CONTOUR MINOR (5' C.L.) BOULDER CONSTRUCTION ENTRANCE	TRUSS MAT COMPOST FILTER SOCK (10') EROSION CONTROL BLANKET PERMA ZONE A FLOODPLAIN SAFETY FENCE TRENCH PLUS
<b>E&amp;S MATERIAL SUMMARY</b>		
NO. OF LOTS: 1 NO. OF ACRES: 1.74 TOTAL AREA: 1.74 ACRES WETLAND AREA: 1.74 ACRES STREAM CHANNEL AREA: 0.00 ACRES RELIEVE AREA: 0.00 ACRES EXISTING CONTOUR MAJOR (10' C.L.) AREA: 0.00 ACRES EXISTING CONTOUR MINOR (5' C.L.) AREA: 0.00 ACRES BOULDER CONSTRUCTION ENTRANCE AREA: 0.00 ACRES	<b>GRAPHIC SCALE</b> 1 inch = 50 feet 1 foot = 12 inches 1 mile = 5280 feet 1 mile = 1.609 kilometers 1 mile = 1.609 meters	
<b>REVISIONS</b>		



WETLAND AND WATERBODY CONSTRUCTION AND MITIGATION PROCEDURES

1. INTRODUCTION
A. PURPOSE OF THESE WETLAND AND WATERBODY CONSTRUCTION AND MITIGATION PROCEDURES...

2. ENVIRONMENTAL CONSIDERATIONS
A. FEDERAL AND STATE REGULATIONS...

3. PRELIMINARY INVESTIGATION
A. FIELD SURVEY...

4. CONSTRUCTION AND MITIGATION PROCEDURES
A. GENERAL CONSTRUCTION PROCEDURES...

5. WETLAND RESTORATION
A. RESTORATION PROCEDURES...

6. WETLAND RESTORATION
A. RESTORATION PROCEDURES...

7. WETLAND RESTORATION
A. RESTORATION PROCEDURES...

8. WETLAND RESTORATION
A. RESTORATION PROCEDURES...

9. WETLAND RESTORATION
A. RESTORATION PROCEDURES...

10. WETLAND RESTORATION
A. RESTORATION PROCEDURES...

11. WETLAND RESTORATION
A. RESTORATION PROCEDURES...

12. WETLAND RESTORATION
A. RESTORATION PROCEDURES...

13. WETLAND RESTORATION
A. RESTORATION PROCEDURES...

14. WETLAND RESTORATION
A. RESTORATION PROCEDURES...

15. WETLAND RESTORATION
A. RESTORATION PROCEDURES...

16. WETLAND RESTORATION
A. RESTORATION PROCEDURES...

17. WETLAND RESTORATION
A. RESTORATION PROCEDURES...

18. WETLAND RESTORATION
A. RESTORATION PROCEDURES...

19. WETLAND RESTORATION
A. RESTORATION PROCEDURES...

20. WETLAND RESTORATION
A. RESTORATION PROCEDURES...

21. WETLAND RESTORATION
A. RESTORATION PROCEDURES...

22. WETLAND RESTORATION
A. RESTORATION PROCEDURES...

23. WETLAND RESTORATION
A. RESTORATION PROCEDURES...

24. WETLAND RESTORATION
A. RESTORATION PROCEDURES...

25. WETLAND RESTORATION
A. RESTORATION PROCEDURES...

26. WETLAND RESTORATION
A. RESTORATION PROCEDURES...

27. WETLAND RESTORATION
A. RESTORATION PROCEDURES...

28. WETLAND RESTORATION
A. RESTORATION PROCEDURES...

29. WETLAND RESTORATION
A. RESTORATION PROCEDURES...

30. WETLAND RESTORATION
A. RESTORATION PROCEDURES...

31. WETLAND RESTORATION
A. RESTORATION PROCEDURES...

32. WETLAND RESTORATION
A. RESTORATION PROCEDURES...

33. WETLAND RESTORATION
A. RESTORATION PROCEDURES...

34. WETLAND RESTORATION
A. RESTORATION PROCEDURES...

35. WETLAND RESTORATION
A. RESTORATION PROCEDURES...



DATE: 06/22/16
DRAWN BY: BHM
CHECKED: KMC
DRAWING NO: WILLIAMS0520003
SHEET NO: 3 OF 7

TRANSCONTINENTAL GAS PIPE LINE COMPANY, LLC
EROSION AND SEDIMENTATION CONTROL & SITE RESTORATION PLAN
LIFTY LINE "Y" HYDROTIST - PHASE IV SECTION 1 DVD

NOTES
LITCHING WETLAND
LITCHING WETLAND

Table with 2 columns: REASONS, COMMENTS

WMM consulting, inc
3000 GREEN TECH BLVD, SUITE B
STATE COLLEGE, PA 16801

PROJECT: TRANSCONTINENTAL GAS PIPE LINE COMPANY, LLC
EROSION AND SEDIMENTATION CONTROL & SITE RESTORATION PLAN
LIFTY LINE "Y" HYDROTIST - PHASE IV SECTION 1 DVD



1. INTRODUCTION. CONSTRUCTION PHASE
THE PURPOSE OF THIS PLAN IS TO PREVENT EROSION, SEDIMENTATION, AND SOIL POLLUTION FROM OCCURRING ON THE PROJECT SITE DURING CONSTRUCTION AND TO RESTORE THE SITE TO ORIGINAL OR BETTER CONDITION AFTER CONSTRUCTION IS COMPLETED.

2. SECTION AND LOCATION
A. GENERAL INFORMATION
B. PROJECT LOCATION AND DESCRIPTION
C. REGULATORY AGENCIES AND PERMITS

3. EROSION CONTROL MEASURES
A. TEMPORARY EROSION CONTROL MEASURES
B. PERMANENT EROSION CONTROL MEASURES
C. BEST MANAGEMENT PRACTICES

4. REVEGETATION AND MAINTENANCE
A. REVEGETATION PLAN
B. MAINTENANCE PLAN
C. MONITORING AND REPORTING

5. CONSTRUCTION AND MAINTENANCE PLAN
A. CONSTRUCTION PHASE
B. MAINTENANCE PHASE
C. SCHEDULE OF ACTIVITIES

6. APPENDICES
A. EROSION CONTROL MEASURES
B. REVEGETATION PLAN
C. MAINTENANCE PLAN

7. NOTES
A. GENERAL NOTES
B. SPECIFIC NOTES
C. REFERENCES

WILLIAMS CONSULTING, INC. logo and contact information. Includes address: 3700 SOUTH 10TH STREET, SUITE 100, DENVER, CO 80202. Phone: (303) 733-1100. Website: www.williamsconsulting.com











