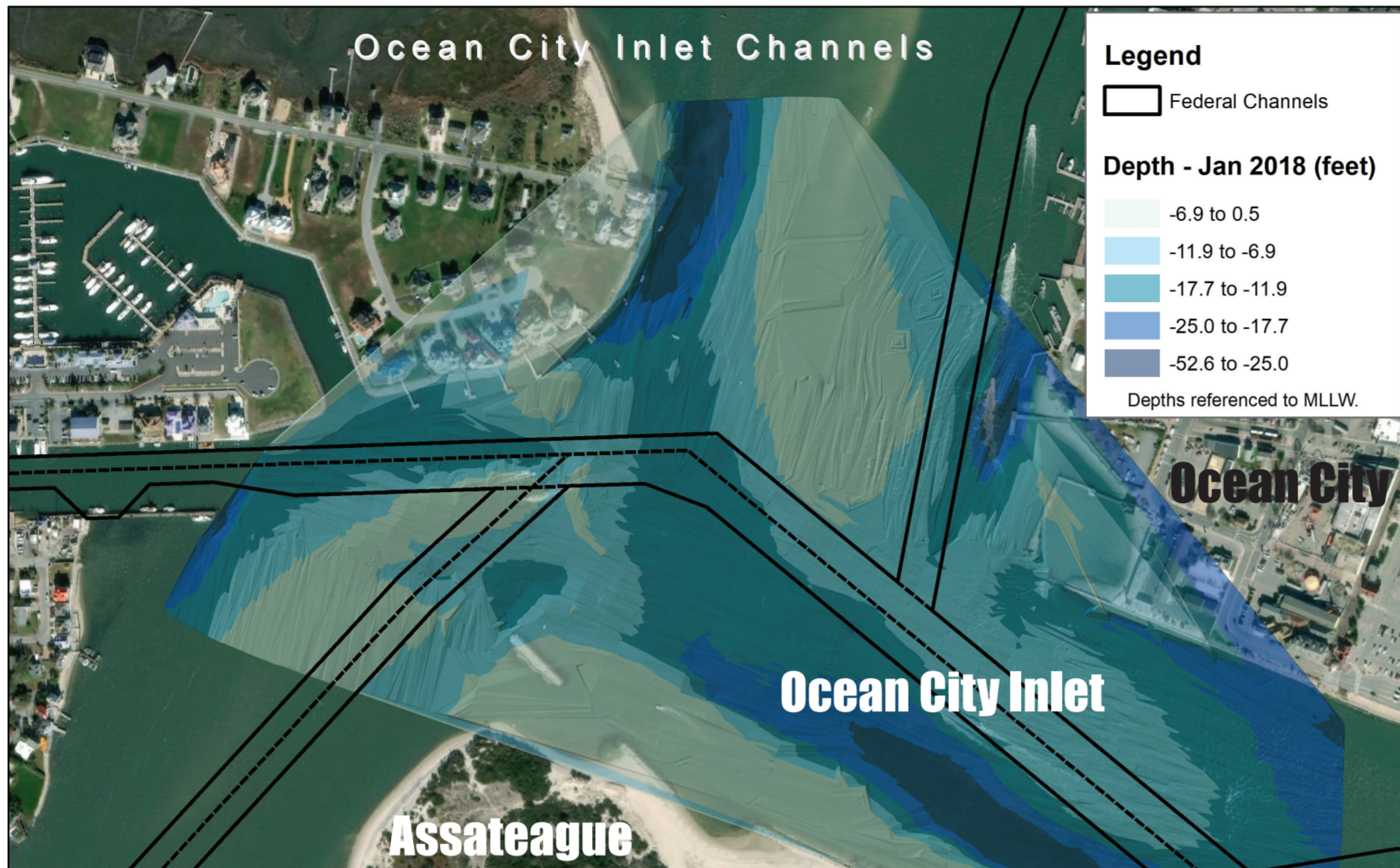


Ocean City Inlet and Harbor Navigation Improvement Project



Engineering



Federally authorized dimensions of Ocean City Harbor and Inlet are 10 feet deep (mean lower low water) and 200 feet wide.

Authority and Economics

- Army Corps Navigation improvement projects authorized by Section 107 of the River and Harbor Act of 1960 (as amended)
- Section 107 projects are formulated for commercial navigation (Engineering Regulation 1105-2-100)
- Economic justification for projects based on analysis of operating costs for commercial vessels
- Benefits of navigation improvements must outweigh costs (Benefit to Cost Ratio)

Dredging

- Inlet typically needs to be dredged several times annually
- Funding availability for this maintenance dredging cannot keep up with needs
- Much of dredging performed through Assateague Island Restoration Project (ends in ~ fiscal year 2027) or emergency dredging funds

Long-term Solutions to Manage Shoaling

- Building a structure to alter patterns for sediment deposit
- Deepening the channel
- Realigning the channel to deeper water

Maintenance Dredging



Alternative Consideration: Channel realignment, breakwater connections and extension, and beach fill

