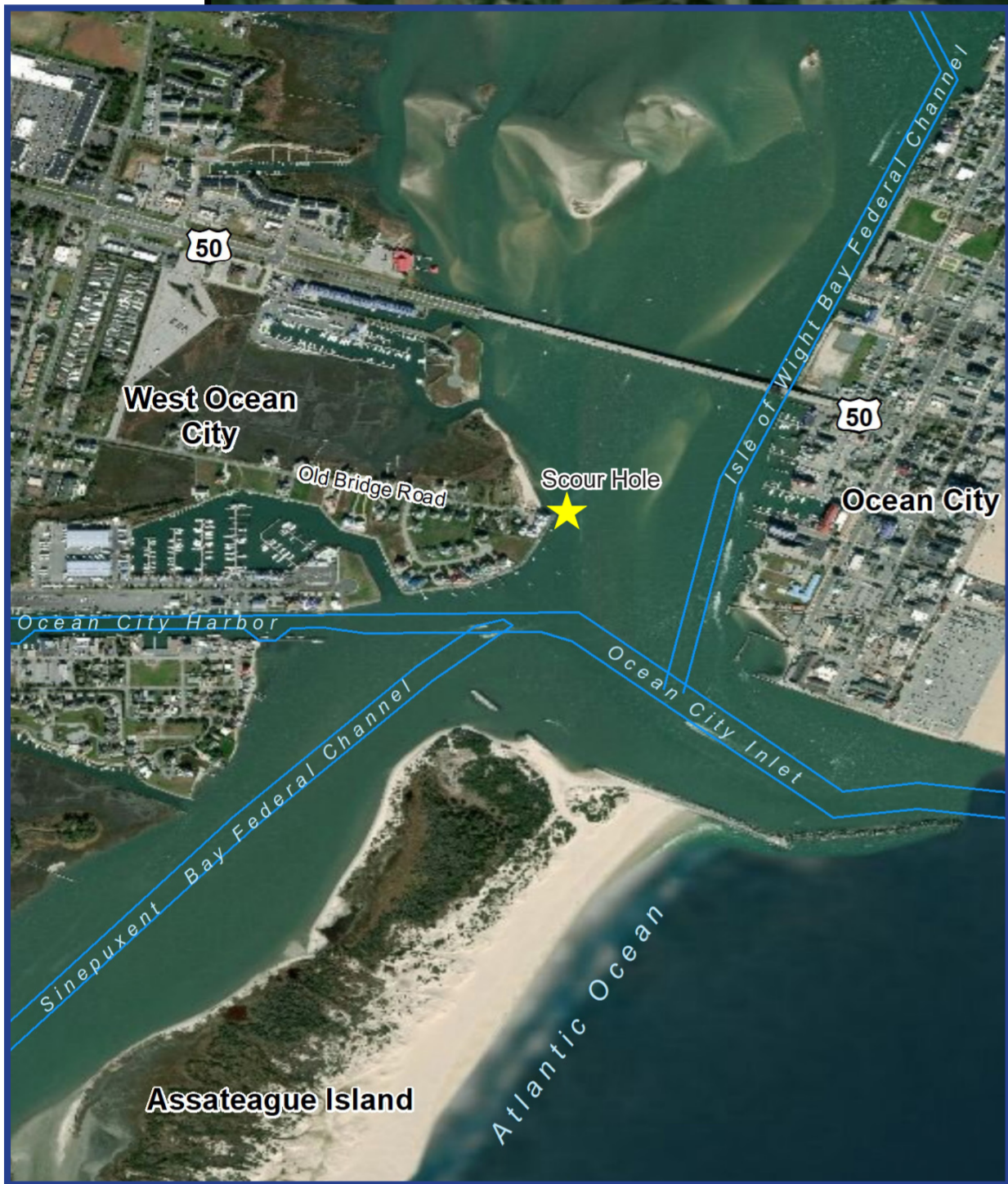


Ocean City Projects

U.S. Army Corps of Engineers



Delaware



Scour Hole Study
Gathers data on sediment movement in and around large scour hole and develops plan to handle the problem and reduce risk to shoreline infrastructure.

Atlantic Coast of Maryland Shoreline Protection Project

Reduces coastal storm risk through an elevated beach berm, protective sea wall built into boardwalk and vegetated dune system. Beach renourishment occurs ~ every four years. Project has prevented more than \$925 million in damages since completion in early 1990s. Project cost shared between Corps, state of Maryland, Worcester County and Town of Ocean City.



Ocean City Harbor Inlet and Sinepuxent Bay Dredging

Authorized to a depth of 10 feet plus two feet of overdepth to ensure safe navigation, dependent on funding.

Ocean City Harbor and Inlet Navigation Improvement Project

Evaluates sediment transport in the inlet and recommends options to manage shoaling, such as jetties or channel modifications.

Assateague Island Restoration Project

Since 2002, the Corps has worked with National Park Service to dredge sand (bypass dredging) from in and around OC inlet and place it just offshore of Assateague Island to mitigate sediment transport and erosion impacts caused by inlet and jetties. Typically done twice a year.



— Federal Channel