

Ocean City Inlet and Harbor Scour Hole Study

U.S. Army Corps of Engineers



Problem

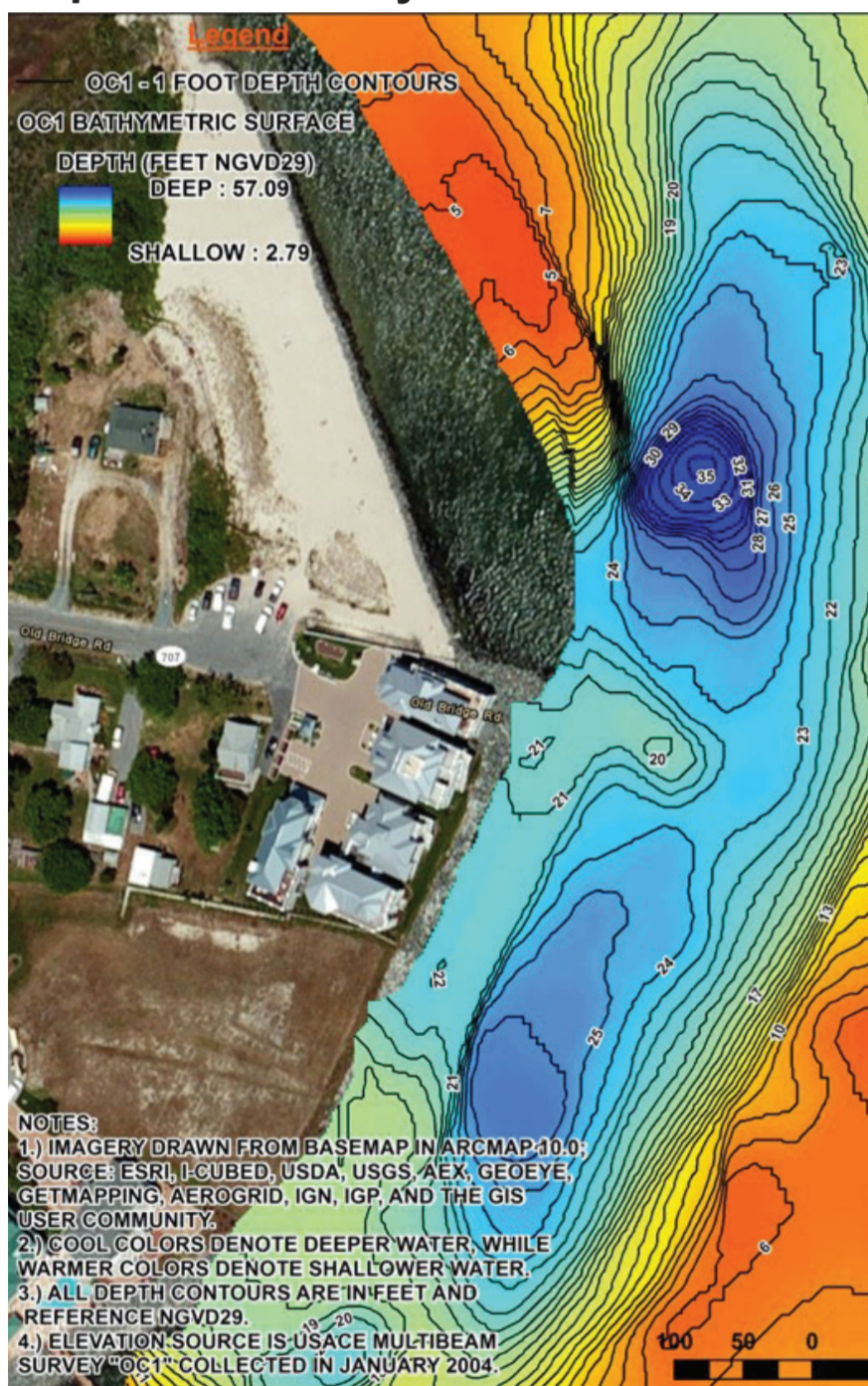
Scour hole south of Homer Gudelsky Park is growing, threatening shoreline stability, nearby homes and shoaling in adjacent navigation channels

- Riprap (rocks placed along shoreline to reduce risk from erosion) at Harbor Lights Condominium is failing
- Loss of riprap could lead to failure of slope, placing adjacent residences at risk for damage from waves

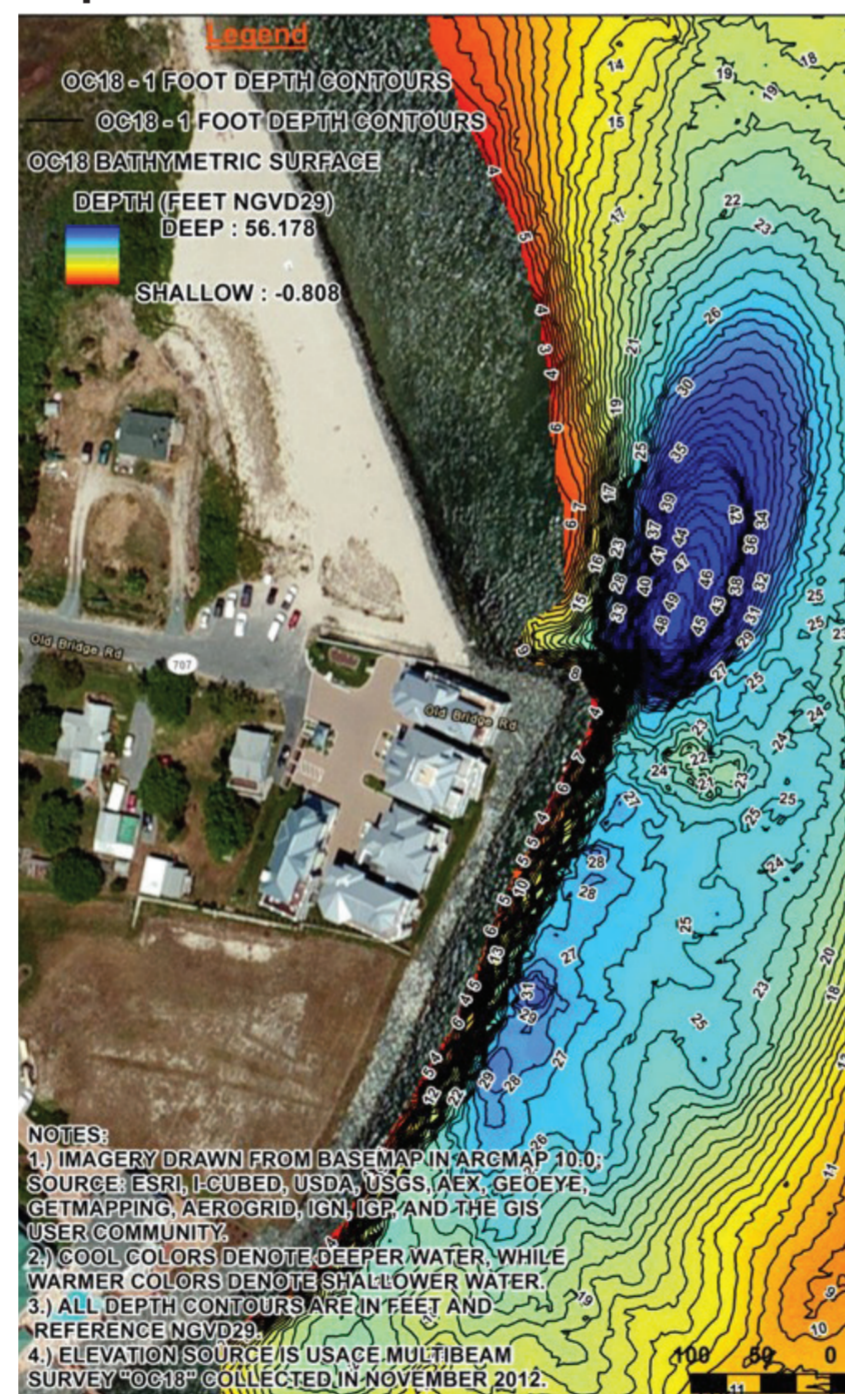
What issues are you seeing?

Fill out a comment card!

Depths in January 2004



Depths in November 2012



Study

Includes:

- Evaluation of problem and sediment management recommendations
- Economic Evaluation
- Development and comparison of project options (training structure, fill and cap, etc.)
- Recommendation for construction of a future project, if feasible

100% federally funded

Timeline

1916	1948	1978	1986 - 1987	1997	2002	2021	2021	2022
Construction of first automobile bridge at Worcester St.	Removal of old bridge (Route 707) after construction of Route 50 bridge	Survey shows scour hole 47 feet deep in Isle of Wight channel, in line with old bridge	Placement of scour protection at Route 50 bridge	Stone armoring (riprap) placed on shoreline adjacent Homer Gudelsky Park	Extension of riprap (north by 145 feet) through footprint of old bridge	Completed modeling and developed project alternatives	Complete draft report and submit for public review	Approve study document