



St. Jerome Creek, St. Mary's County, MD

U.S. ARMY CORPS OF ENGINEERS

FACT SHEET as of February 1, 2015

AUTHORIZATION: Continuing Authorities Program, Section 107 of the River and Harbor Act of 1960, as amended

TYPE OF PROJECT: Shallow Draft Navigation

CONTRIBUTION TO CHESAPEAKE BAY: Directly contributes to achieving protection and restoration goals established by the 2009 Executive Order 13508 and the 2014 Chesapeake Bay Program Agreement by increasing public access.

PROJECT PHASE: Feasibility

CONGRESSIONAL INTEREST: Senators **Mikulski** and **Cardin** (MD); Congressman **Hoyer** (MD-05)

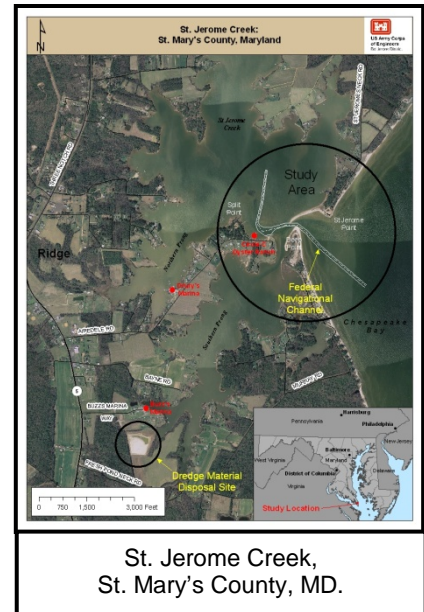
NON-FEDERAL SPONSOR: St. Mary's County, Maryland

BACKGROUND: St. Jerome Creek is located in St. Mary's County, Maryland, along the western shore of the Chesapeake Bay between St. Jerome Neck and Fresh Pond Neck. The existing Federal navigation project consists of a 4,900-foot channel that is 7 feet deep and from 60 to 100 feet wide with a turning basin 200 feet wide and 300 feet long opposite Airdele. The project is approximately 5 miles north of the mouth of the Potomac River and 6 miles southeast of St. Mary's City. The channel begins to shoal below the authorized depth about two years after dredging and seriously impacts vessel movements within five years. This restricts the ability of local watermen, recreational boaters, charter boat operators, and others to exit and enter the waterways during periods of low tide. Such delays result in loss of productive fishing time. Also, damages to recreational vessels have been directly linked to the shoaling problem.

The proposed project is to construct a jetty or jetties that protect the mouth of St. Jerome Creek. The jetties would be designed to trap sediment to keep the channel clear and reduce the dredging need from a two year cycle to a ten year cycle. The proposed action would restore vessel utilization of the channel and associated turning basin, as well as, reduce the need for future maintenance dredging.

STATUS: A Programmatic Agreement with Maryland State Historic Preservation Office was executed on January 17, 2014. The draft feasibility report was submitted to North Atlantic Division (NAD) for review on September 30, 2014. The comments and recommendations from NAD will be incorporated into the report, and the report will be distributed for a 30-day public review process in the 3rd quarter of fiscal 2015. The report/environmental assessment will be revised and submitted for final review and approval by 4th quarter of fiscal 2015.

BUILDING STRONG®



BUDGET (\$):**Construction**

	<u>Feasibility</u>	<u>Design & Implementation</u>
<u>Total Estimated Cost</u>	\$885,460	\$10,291,100
<u>Federal Cost Estimate</u>	492,730	9,129,300
<u>Non-Federal Cost Estimate</u>	392,730	1,161,800

<u>Federal Funds Data</u>		
Allocations thru FY 2013	442,730	\$0
Allocation for FY 2014	\$50,000	\$0
President Budget FY 2015 ¹	\$0	\$0
Allocation for FY 2015 ²	\$0	\$0
Balance to Complete	\$0	\$9,129,300

NOTES:

¹ The President typically sends the budget to Congress in February each year. Upon release, budget amounts for the USACE Civil Works programs and specified projects are posted online at the HQUSACE website in a Program Budget Press Book at <http://www.usace.army.mil/Missions/CivilWorks/Budget.aspx>.

²The final FY 2015 allocation amounts will be made available upon final approval pursuant to the Energy and Water Appropriations Act's continuing funding requirements.

SCHEDULE:

FY 2014 Completed Work: The Programmatic Agreement with Maryland State Historic Preservation Office was executed on January 17, 2014. The draft feasibility report was submitted to NAD for review on September 30, 2014.

FY 2015 Scheduled Work: The comments and recommendations from NAD will be incorporated into the report, and the report will be distributed for a 30-day public review process in the 3rd quarter of FY15. The report/environmental assessment will be revised and submitted for final review and approval by 4th quarter of FY15.

COMPLETION: The feasibility phase will be completed in fiscal 2015. With optimum funding, the design and implementation phase could be completed in fiscal 2017.

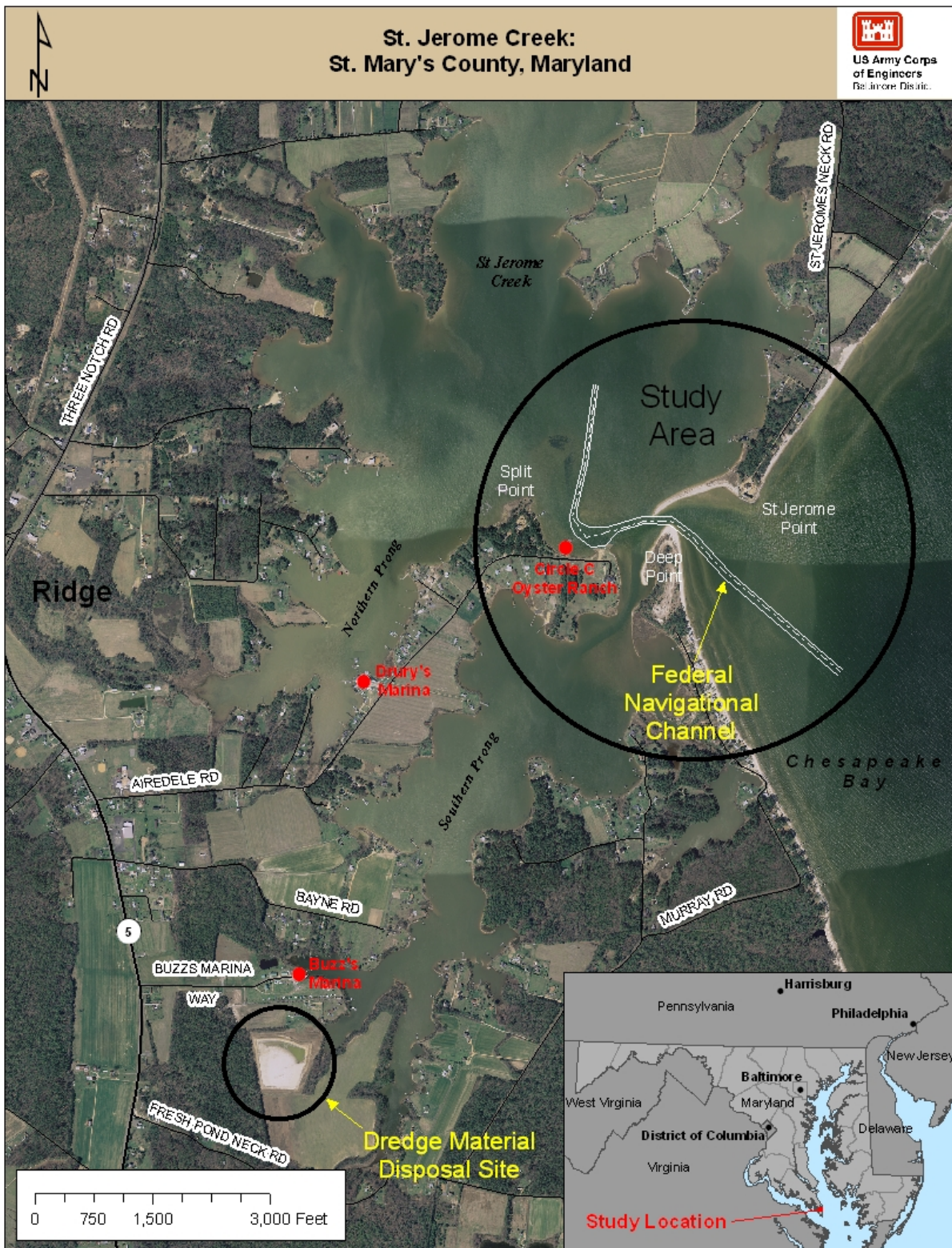
For more information regarding the St. Jerome Creek Section 107 project, contact Mr. Anthony A. Clark, CENAB-PL-P, (410) 962-3413, or e-mail, anthony.a.clark@usace.army.mil.

U.S. ARMY CORPS OF ENGINEERS – BALTIMORE DISTRICT

P.O. Box 1715, Baltimore, MD 21203

<http://www.nab.usace.army.mil>

Page 2 of 3



U.S. ARMY CORPS OF ENGINEERS – BALTIMORE DISTRICT

P.O. Box 1715, Baltimore, MD 21203

<http://www.nab.usace.army.mil>

Page 3 of 3